

Shown: 2025 & 2030: Min/max of unconditional and conditional targets

Shown are averages for low and high or conditional and unconditional INDCs and their inter-extrapolations

Paris Agreement ratified on: 07/08/2017

Per-Capita Emissions in 2030 rel. 2015 (excl. LULUCF): **+142%**

Zimbabwe

NDC 2025

NDC 2030

2015 World Rank

2025 World Rank

2030 World Rank

0% rel. BAU of 49.7 Mt

0% rel. BAU of 70.7 Mt

Share of World Emissions excl. LULUCF (Rank):

0.0% #115

0.1% #80

0.1% #75

-30% rel. BAU of 49.7 Mt

-30% rel. BAU of 70.7 Mt

Per-Capita Emissions (tCO₂eq/cap)

1.5t #161

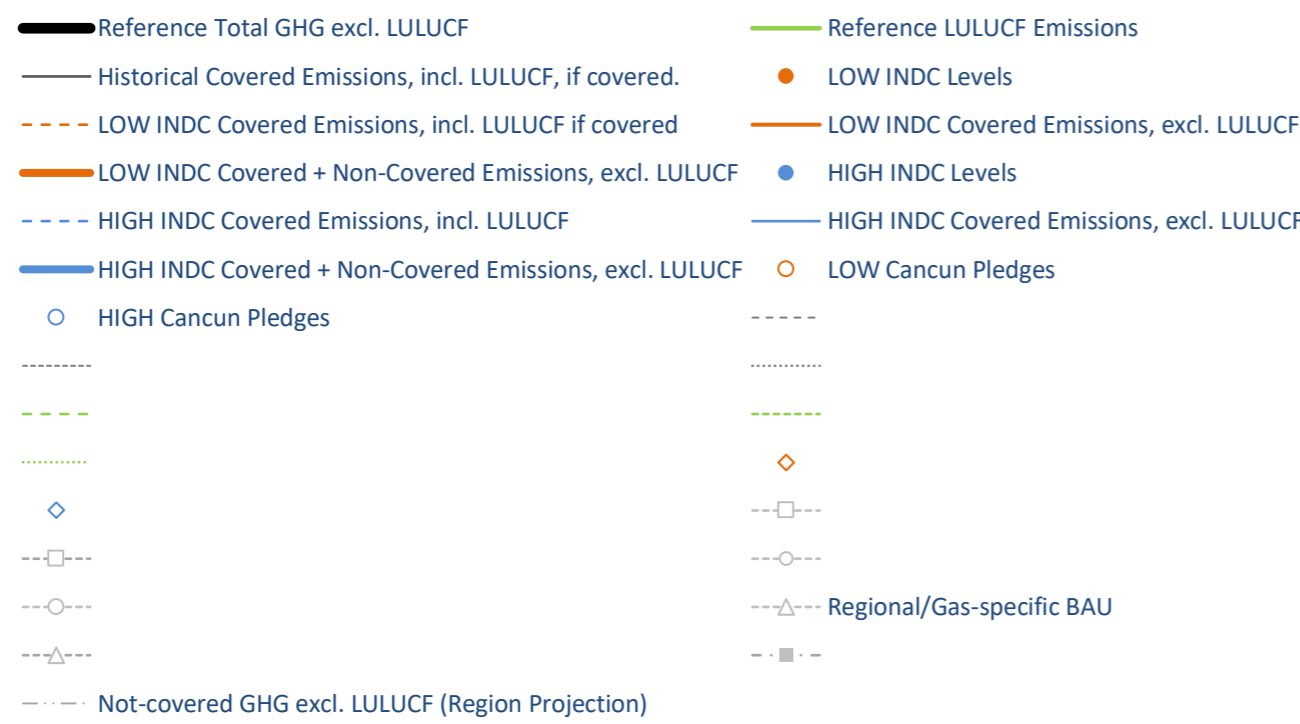
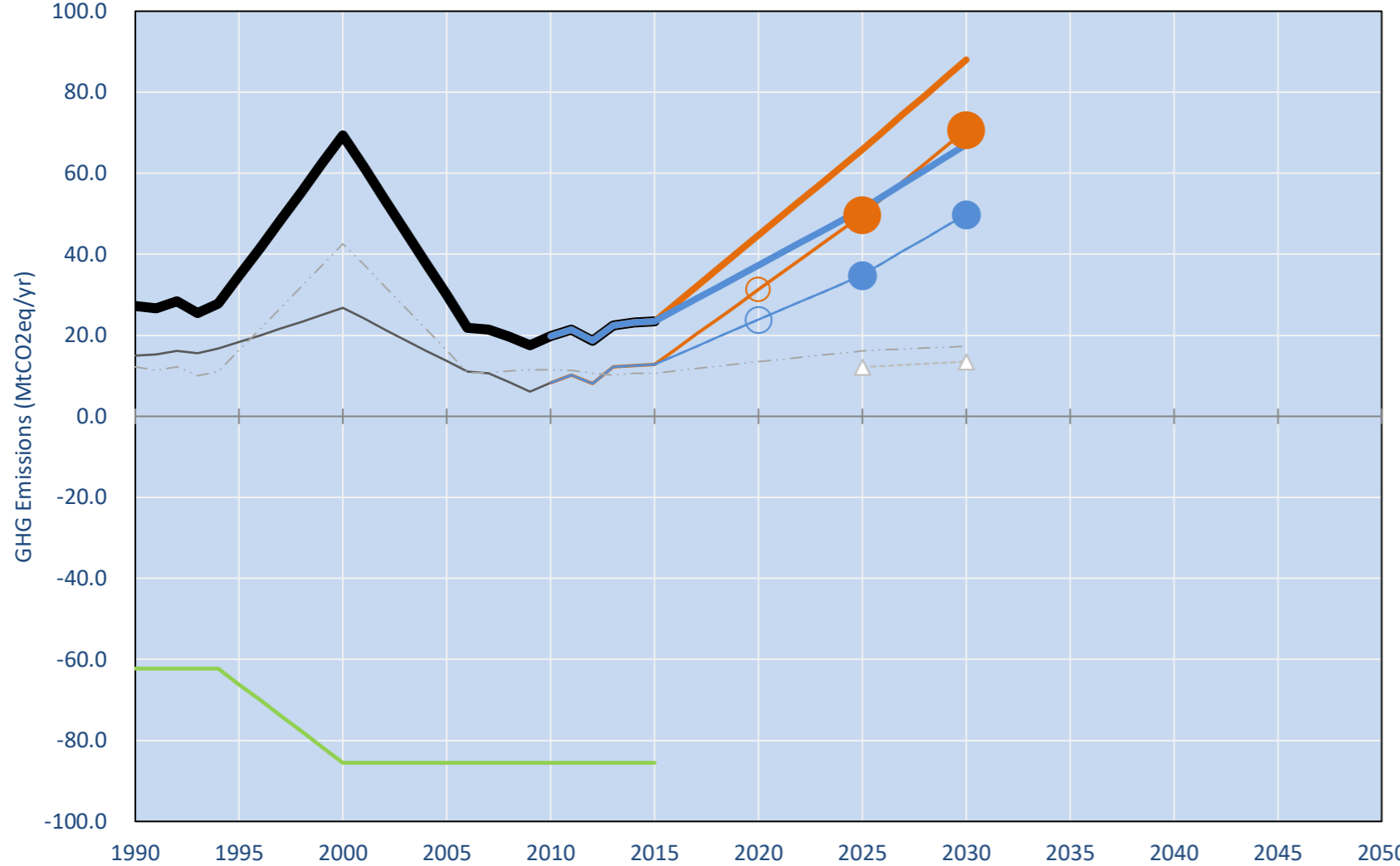
3t #122

3.6t #111

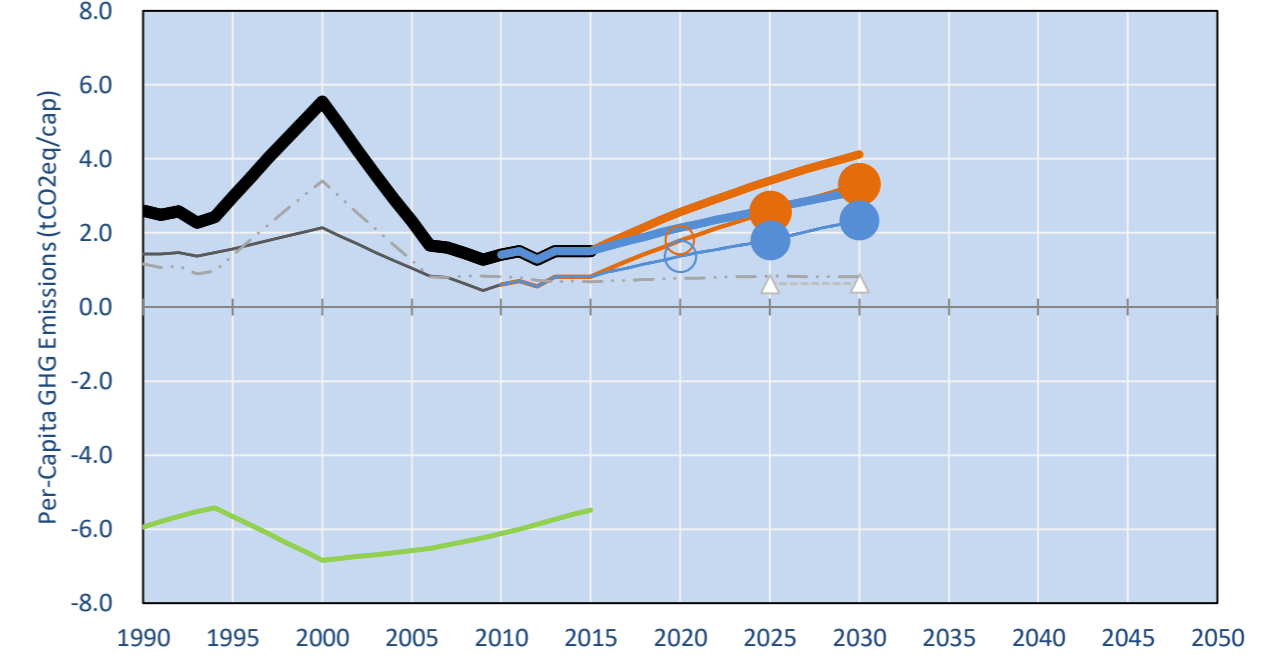
NDC: Reduction of emissions per capita by 33% compared to BAU conditional to full implementation by developed countries to their commitments relating to finance, technology and capacity pursuant to Article 4 of the Convention. (GWP unclear)

INDC Submitted: 30/09/2015

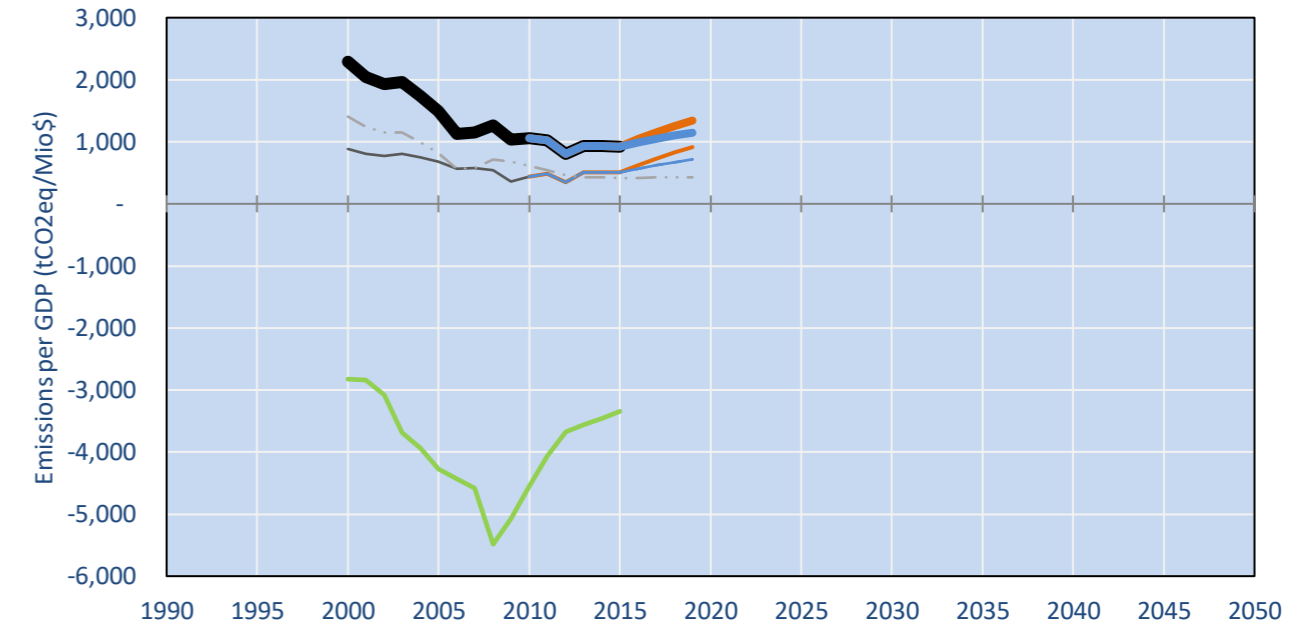
GHG Emissions



Per-Capita Emissions

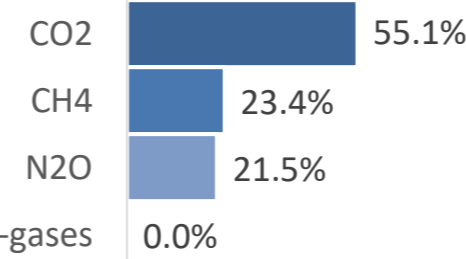


GHG Emissions per GDP

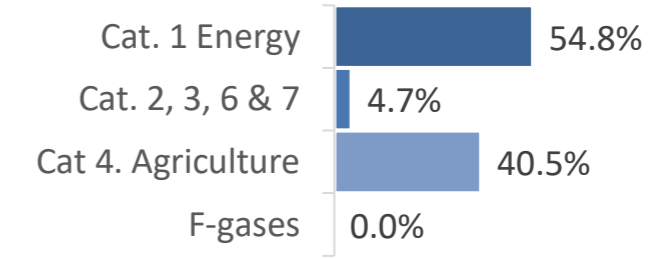


2015 Total GHG Emissions excl. LULUCF

By Gas:



By Sector:



GHG Emissions

	1990	2000	2005	2010	2015	2020		2025		2030	
(MtCO ₂ eq/yr in GWP SAR)						low	high	low	high	low	high
Assumed LULUCF Accounting Credits (-)/Debits (+)											
NDC covered LULUCF Emissions											
NDC covered Emissions excl. LULUCF	15	27	14	8	13	31	24	50	35	71	50
Total GHG excl. LULUCF	27	69	30	20	23	45	37	66	51	88	67
Total GHG incl. LULUCF	35	16	56	66	62	41	48	20	34	2	18

Relative GHG Emissions

	1990	2000	2005	2010	2015	2020		2025		2030	
Total excl. LULUCF						low	high	low	high	low	high
Relative 1990	100%	254%	110%	73%	86%	164%	137%	242%	187%	323%	246%
Relative 2000	39%	100%	43%	29%	34%	65%	54%	95%	74%	127%	97%
Relative 2005	91%	232%	100%	66%	78%	150%	125%	220%	171%	294%	224%
Relative 2010	137%	350%	151%	100%	118%	226%	188%	332%	258%	444%	338%
Relative 2015	116%	296%	128%	85%	100%	191%	160%	281%	218%	376%	287%

Per-Capita Emissions

	1990	2000	2005	2010	2015	2020		2025		2030	
Total excl. LULUCF						low	high	low	high	low	high
Population (Mio)	10	12	13	14	16	17	17	19	19	21	21
Per-Capita Emissions (tCO ₂ eq/cap)	2.6	5.5	2.3	1.4	1.5	2.6	2.1	3.4	2.6	4.1	3.1
Relative 1990	100%	213%	89%	55%	58%	99%	82%	131%	101%	158%	121%
Relative 2000	47%	100%	42%	26%	27%	46%	39%	61%	48%	74%	57%
Relative 2005	113%	241%	100%	62%	65%	111%	93%	148%	114%	179%	136%
Relative 2010	183%	391%	162%	100%	106%	181%	151%	240%	186%	290%	221%
Relative 2015	173%	370%	154%	95%	100%	171%	142%	227%	176%	275%	209%

Data Sources:

Cat1_CO2	PRIMAPHIST17	Cat5A1_CO2	UNFCCC CRF + Nat. Comms.
Cat2367_CO2	PRIMAPHIST17	Cat5A2_CO2	UNFCCC CRF + Nat. Comms.
Cat4_CO2	PRIMAPHIST17	Cat5LtoNonFL_CO2	UNFCCC CRF + Nat. Comms.
Cat5_CO2	PRIMAPHIST17	Cat5GMCCMWM_C	UNFCCC CRF
Cat1_CH4	PRIMAPHIST17	Cat5A1ForestFires	UNFCCC Cat5 + EDGAR(IPCC Database)
Cat2367_CH4	PRIMAPHIST17	Cat5A1HWP_CO2	UNFCCC CRF + Nat. Comms.
Cat4_CH4	PRIMAPHIST17	Cat5bisA_CO2	UNFCCC CRF + NATCOMM.
Cat5_CH4	PRIMAPHIST17	Cat5bisB_CO2	UNFCCC CRF + NATCOMM.
Cat1_N2O	PRIMAPHIST17	Cat5bisC_CO2	UNFCCC CRF + NATCOMM.
Cat2367_N2O	PRIMAPHIST17	Cat5bisD_CO2	UNFCCC CRF + NATCOMM.
Cat4_N2O	PRIMAPHIST17	Cat5bisE_CO2	UNFCCC CRF + NATCOMM.
Cat5_N2O	PRIMAPHIST17	PRO_WM_Cat5_G	UNFCCC Annex I Reports
Cat0_HFCs	PRIMAPHIST17	Metric	GWP SAR
Cat0_PFCs	PRIMAPHIST17		
Cat0_SF6	PRIMAPHIST17		
Population	UN 2015 Population Projections MEDIUM		
GDP	IMF WEO 2015, PPP adjusted GDP, constant 2009 prices...		
IPCC WG3 Scenario	IMAGE AMPERE2-550-FullTech-HST		
PRIMAPHIST16 description:	www.pik-potsdam.de/primap-live/primap-hist/		
Gratefully acknowledged in particular:	PRIMAP, CAIT, CDIAC, EDGAR, IPCC, IEA, UNEP GAP Team, AMPERE Team and comments on earlier versions, in particular by Giacomo Grassi. Errors and misjudgements are our own. Malte Meinshausen & Ryan Alexander; The "Fiji COP23" Edition was enabled through support via the BMUB project UM14 41 4060		
This Factsheet is available at	www.climatecollege.unimelb.edu.au/indc-factsheets. Check out as well: www.climateactiontracker.org, www.mitigation-contributions.org, cait.wri.org, infographics.pbl.nl/indc, live.primap.org, www.unep.org/climatechange/pledgepipeline, and our twitter feed @ClimateCollege		

climatecollege.unimelb.edu.au



Various 'fair' contributions for a global 'least-cost' 2°C path (total incl. LULUCF):

2025 rel. 2010:	2030 rel. 2010:
LEADER	#N/A
CDC	#N/A
ECPC50	#N/A
ECPC90	#N/A
GDR	#N/A
INDC HIGH	#N/A
INDC LOW	#N/A

More info on www.mitigation-contributions.org

No results shown, as 2010 total incl. LULUCF emissions below zero
"Fair" contributions for a global 'least-cost' 2°C track:
LEADER Leader
CDC Common-but-diff. per-cap. convergence
ECPC50 Eq. cum. Per-capita since 1950
ECPC90 Eq. cum. Per-capita since 1990
GDR Greenhouse Development Rights
#N/A No available data