

# Viet Nam

Per-Capita Emissions in 2030 rel. 2015 (excl. LULUCF): **+70%**

NDC 2025

NDC 2030

2015 World Rank

2025 World Rank

2030 World Rank

Share of World Emissions excl. LULUCF (Rank):

0.7% #29

1.0% #18

1.1% #15

Per-Capita Emissions (tCO<sub>2</sub>eq/cap)

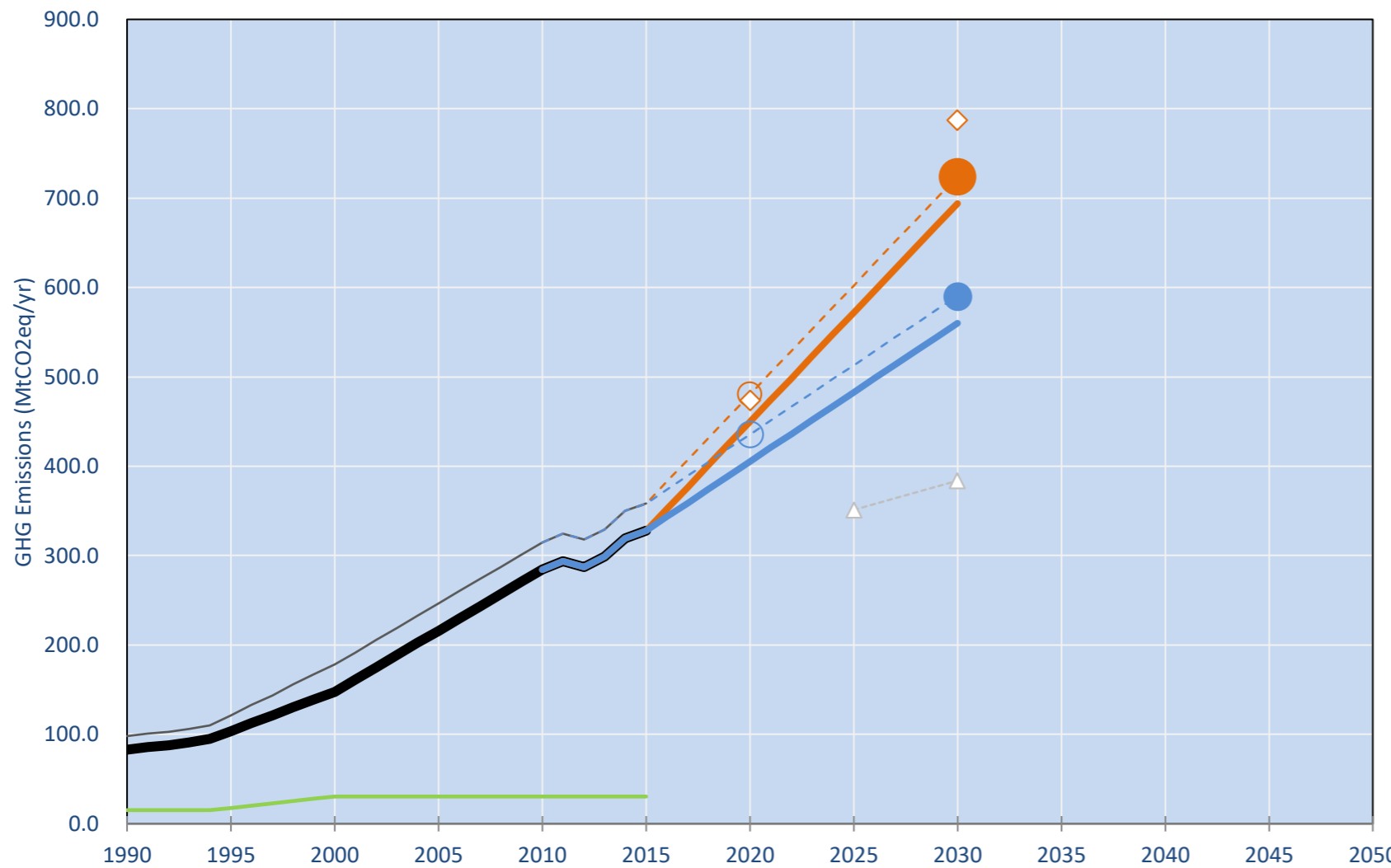
3.5t #112

5.2t #91

6t #82

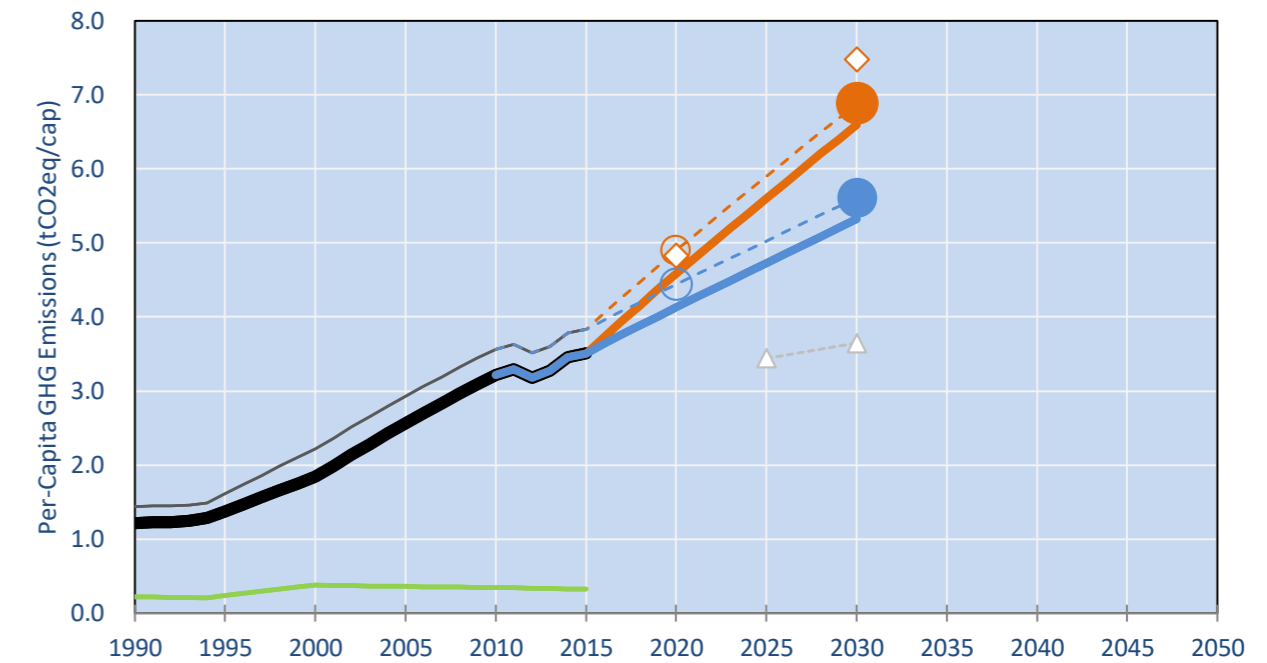
INDC Submitted: 30/09/2015

## GHG Emissions

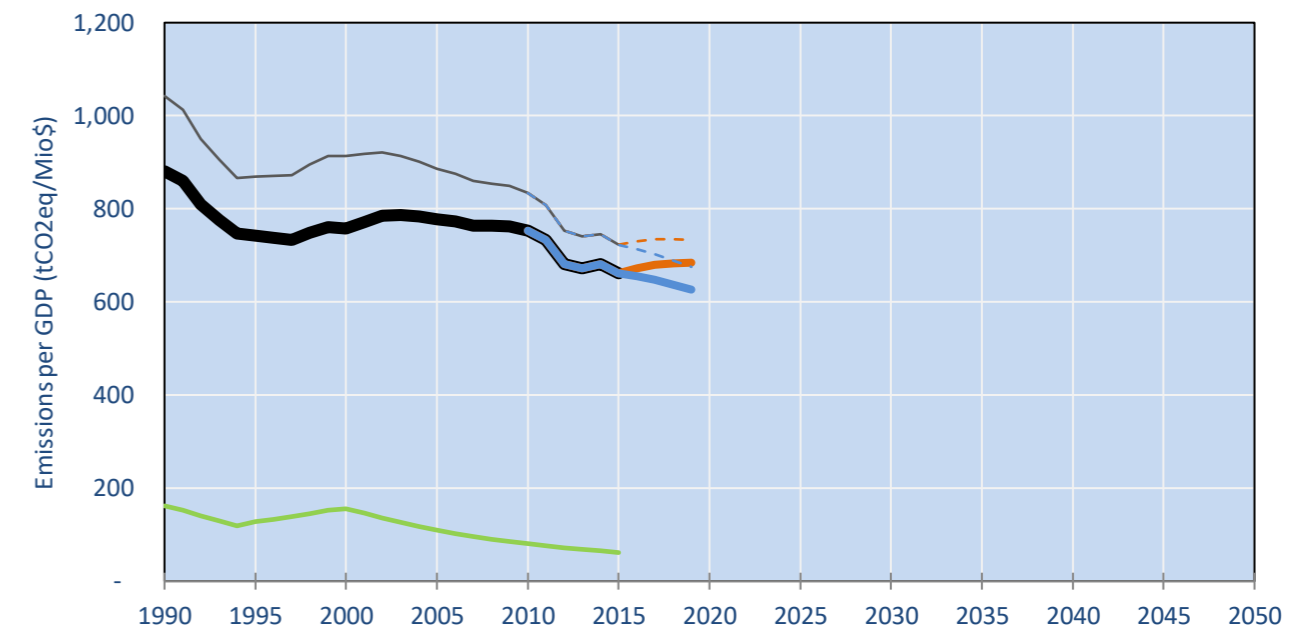


- Reference Total GHG excl. LULUCF
- Historical Covered Emissions, incl. LULUCF, if covered.
- LOW INDC Covered Emissions, incl. LULUCF if covered
- LOW INDC Covered + Non-Covered Emissions, excl. LULUCF
- HIGH INDC Covered Emissions, incl. LULUCF
- HIGH INDC Covered + Non-Covered Emissions, excl. LULUCF
- HIGH Cancun Pledges
- Reference LULUCF Emissions
- LOW INDC Levels
- LOW INDC Covered Emissions, excl. LULUCF
- HIGH INDC Levels
- HIGH INDC Covered Emissions, excl. LULUCF
- LOW Cancun Pledges
- Vietnam INDC BAU GWP AR4
- Regional/Gas-specific BAU
- Not-covered GHG excl. LULUCF (Region Projection)

## Per-Capita Emissions

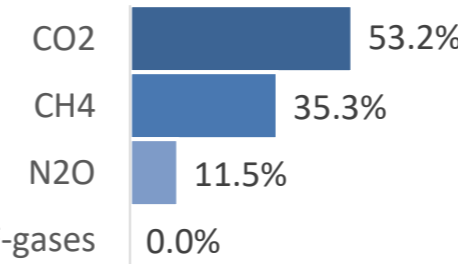


## GHG Emissions per GDP

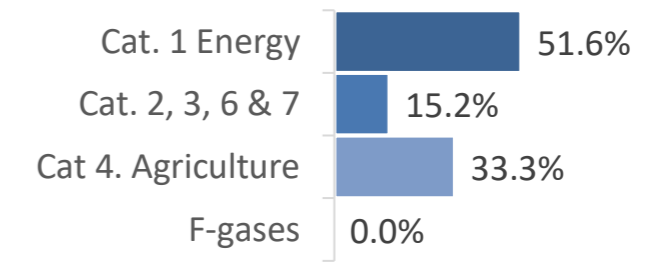


## 2015 Total GHG Emissions excl. LULUCF

By Gas:



By Sector:



## GHG Emissions

	1990	2000	2005	2010	2015	2020	2025	2030	
(MtCO <sub>2</sub> eq/yr in GWP AR4)						low	high	low	high
Assumed LULUCF Accounting Credits (-)/Debits (+)									
NDC covered LULUCF Emissions	15	30	30	30	30	30	30	30	30
NDC covered Emissions excl. LULUCF	83	148	216	284	328	450	405	572	483
Total GHG excl. LULUCF	83	148	216	284	328	450	405	572	483
Total GHG incl. LULUCF	98	178	246	315	358	480	436	602	513

## Relative GHG Emissions

	1990	2000	2005	2010	2015	2020	2025	2030	
Total excl. LULUCF						low	high	low	high
Relative 1990	100%	178%	261%	343%	396%	543%	489%	690%	582%
Relative 2000	56%	100%	146%	192%	222%	304%	274%	387%	327%
Relative 2005	38%	68%	100%	132%	152%	208%	188%	265%	224%
Relative 2010	29%	52%	76%	100%	115%	158%	143%	201%	170%
Relative 2015	25%	45%	66%	87%	100%	137%	124%	174%	147%

## Per-Capita Emissions

	1990	2000	2005	2010	2015	2020	2025	2030	
Total excl. LULUCF						low	high	low	high
Population (Mio)	68	80	84	88	93	98	98	102	102
Per-Capita Emissions (tCO <sub>2</sub> eq/cap)	1.2	1.8	2.6	3.2	3.5	4.6	4.1	5.6	4.7
Relative 1990	100%	151%	211%	265%	289%	377%	340%	461%	389%
Relative 2000	66%	100%	139%	175%	191%	249%	224%	304%	257%
Relative 2005	47%	72%	100%	125%	137%	179%	161%	218%	184%
Relative 2010	38%	57%	80%	100%	109%	142%	128%	174%	147%
Relative 2015	35%	52%	73%	92%	100%	131%	118%	160%	135%

## Data Sources:

Cat1_CO2	PRIMAPHIST17	Cat5A1_CO2	UNFCCC CRF + Nat. Comms.
Cat2367_CO2	PRIMAPHIST17	Cat5A2_CO2	UNFCCC CRF + Nat. Comms.
Cat4_CO2	PRIMAPHIST17	Cat5LtoNonFL_CO2	UNFCCC CRF + Nat. Comms.
Cat5_CO2	PRIMAPHIST17	Cat5GCMCMWM_C	UNFCCC CRF
Cat1_CH4	PRIMAPHIST17	Cat5A1ForestFires	UNFCCC Cat5 + EDGAR(IPCC Database)
Cat2367_CH4	PRIMAPHIST17	Cat5A1HWP_CO2	UNFCCC CRF + Nat. Comms.
Cat4_CH4	PRIMAPHIST17	Cat5bisA_CO2	UNFCCC CRF + NATCOMM.
Cat5_CH4	PRIMAPHIST17	Cat5bisB_CO2	UNFCCC CRF + NATCOMM.
Cat1_N2O	PRIMAPHIST17	Cat5bisC_CO2	UNFCCC CRF + NATCOMM.
Cat2367_N2O	PRIMAPHIST17	Cat5bisD_CO2	UNFCCC CRF + NATCOMM.
Cat4_N2O	PRIMAPHIST17	Cat5bisE_CO2	UNFCCC CRF + NATCOMM.
Cat5_N2O	PRIMAPHIST17	PRO_WM_Cat5_G	UNFCCC Annex I Reports
Cat0_HFCs	PRIMAPHIST17	Metric	GWP AR4
Cat0_PFCs	PRIMAPHIST17		
Cat0_SF6	PRIMAPHIST17		
Population	UN 2015 Population Projections MEDIUM		
GDP	IMF WEO 2015, PPP adjusted GDP, constant 2009 prices...		
	IPCC WG3 Scenario IMAGE   AMPERE2-550-FullTech-HST		
	PRIMAPHIST16 description: www.pik-potsdam.de/primap-live/primap-hist/		
	Gratefully acknowledged in particular: PRIMAP, CAIT, CDIAC, EDGAR, IPCC, IEA, UNEP Gap Team, AMPERE Team and comments on earlier versions, in particular by Giacomo Grassi. Errors and misjudgements are our own. Malte Meinshausen & Ryan Alexander; The "Fiji COP23" Edition was enabled through support via the BMUB project UM14 41 4060		

climatecollege.unimelb.edu.au



## Various 'fair' contributions for a global 'least-cost' 2°C path (total incl. LULUCF):

More info on [www.mitigation-contributions.org](http://www.mitigation-contributions.org)

	2025 rel. 2010:	2030 rel. 2010:		"Fair" contributions for a global 'least-cost' 2°C track:
LEADER	#N/A	LEADER	#N/A	LEADER <b>Leader</b>
CDC	#N/A	CDC	#N/A	CDC <b>Common-but-diff. per-cap. convergence</b>
ECPC50	#N/A	ECPC50	#N/A	ECPC50 <b>Eq. cum. Per-capita since 1950</b>
ECPC90	#N/A	ECPC90	#N/A	ECPC90 <b>Eq. cum. Per-capita since 1990</b>
GDR	#N/A	GDR	#N/A	GDR <b>Greenhouse Development Rights</b>
INDC HIGH	<b>63%</b>	INDC HIGH	<b>88%</b>	#N/A <b>No available data</b>
INDC LOW	<b>91%</b>	INDC LOW	<b>130%</b>	