

Shown: 2025 & 2030: Min/max of unconditional and conditional targets

Paris Agreement ratified on: 21/07/2017

Shown are averages for low and high or conditional and unconditional INDCs and their inter-extrapolations

Venezuela (Bolivarian Republic of)

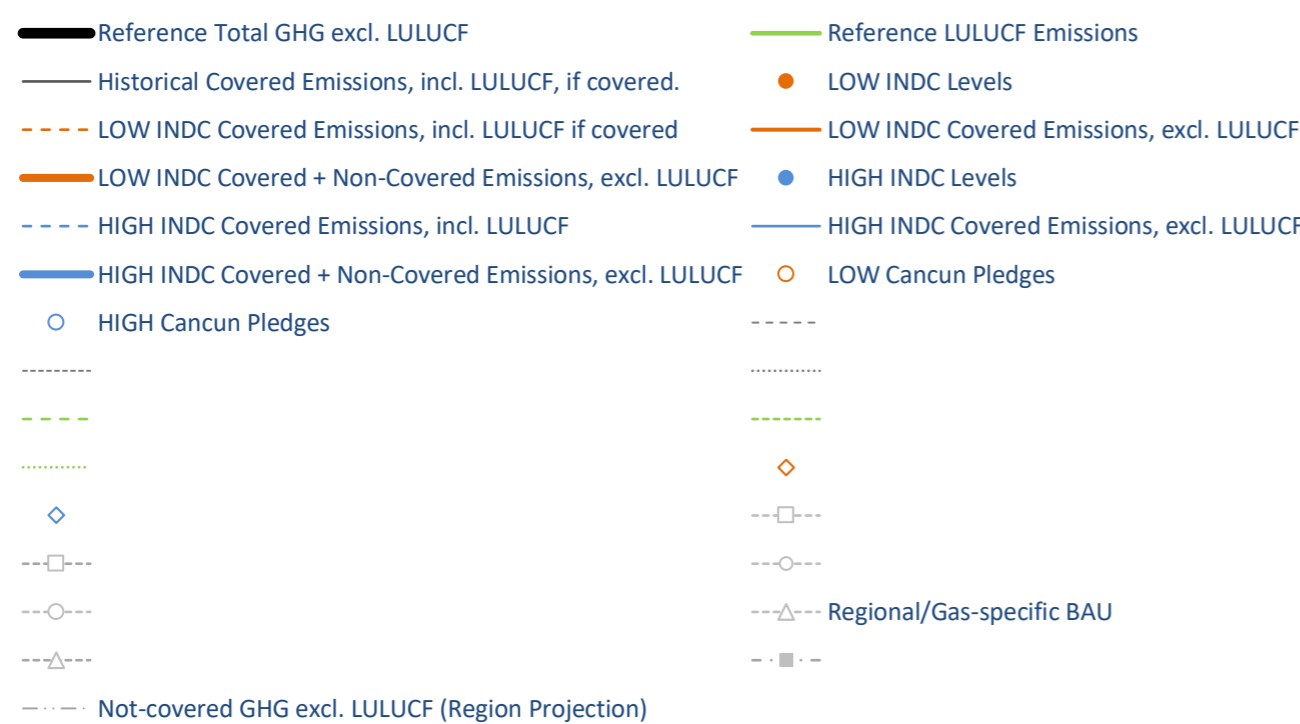
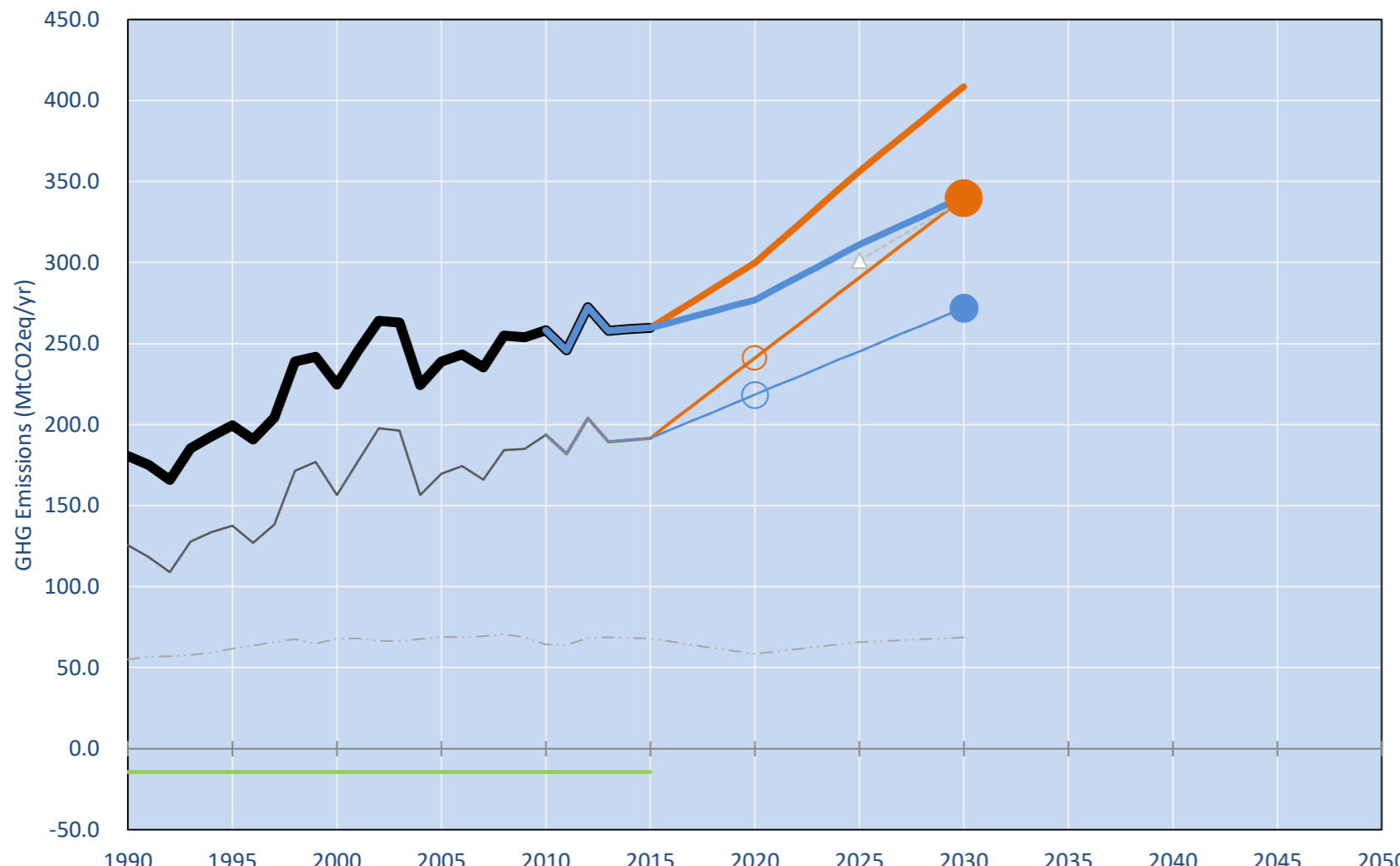
Per-Capita Emissions in 2030 rel. 2015 (excl. LULUCF): **+22%**

NDC 2025	NDC 2030	2015 World Rank	2025 World Rank	2030 World Rank
	0% rel. BAU of 340 Mt	0.6% #34	0.6% #31	0.7% #29
	-20% rel. BAU of 340 Mt	8.3t #48	9.5t #33	10.2t #30

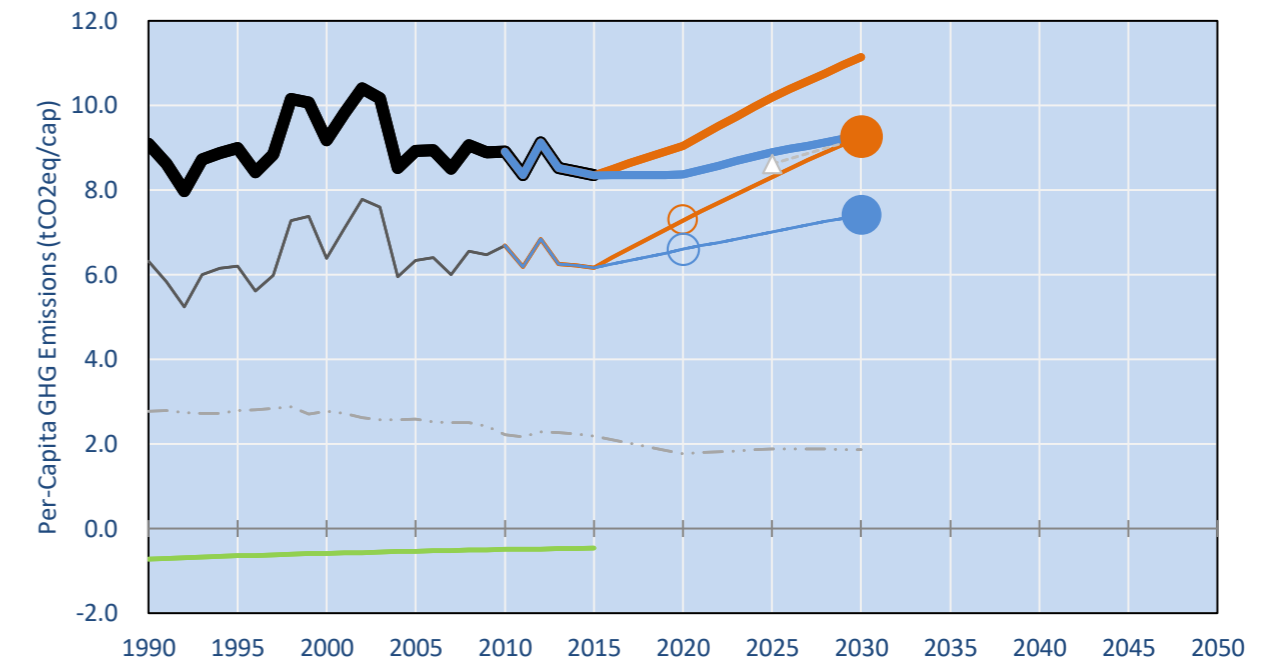
NDC: Reductions of 20% below BAU for CO2 by 2030. Conditional. . . ()

INDC Submitted: 15/12/2015

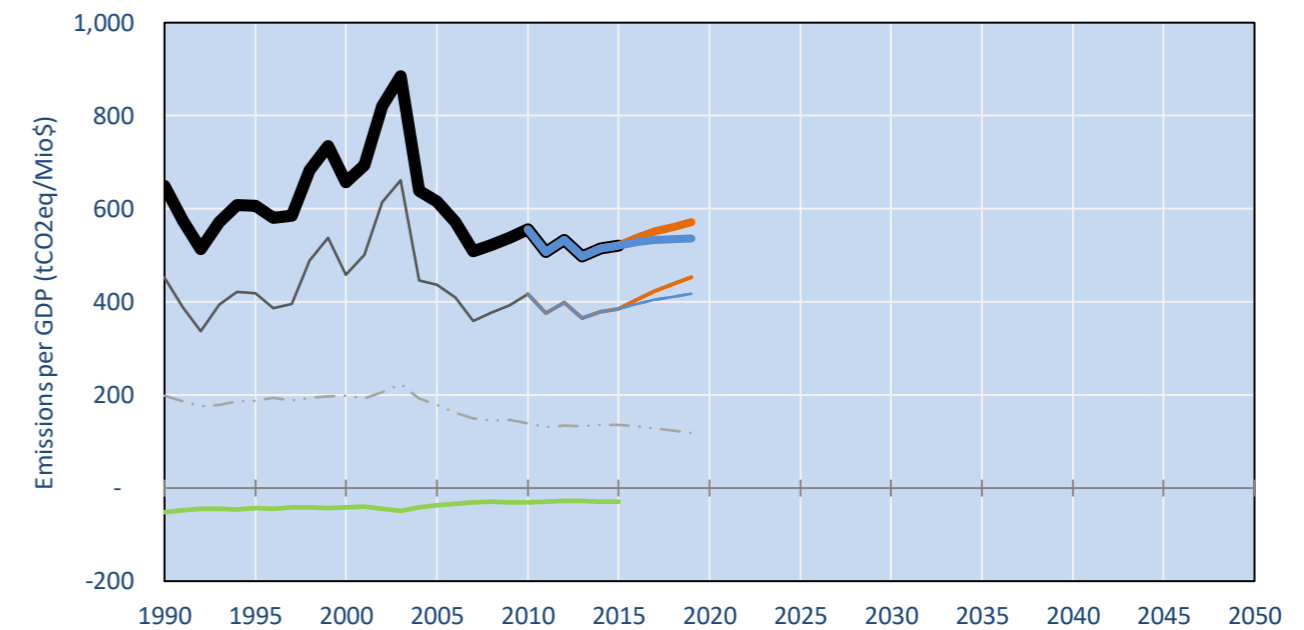
GHG Emissions



Per-Capita Emissions



GHG Emissions per GDP



2015 Total GHG Emissions excl. LULUCF

By Gas:	By Sector:
CO2 74.0%	Cat. 1 Energy 78.7%
CH4 19.7%	Cat. 2, 3, 6 & 7 6.7%
N2O 5.6%	Cat 4. Agriculture 13.9%
F-gases 0.7%	F-gases 0.7%

GHG Emissions

	1990	2000	2005	2010	2015	2020	2025	2030	
(MtCO2eq/yr in GWP SAR)						low	high	low	high
Assumed LULUCF Accounting Credits (-)/Debits (+)	-	-	-	-	-	-	-	-	-
NDC covered LULUCF Emissions	-	-	-	-	-	-	-	-	-
NDC covered Emissions excl. LULUCF	125	157	170	194	192	241	218	291	245
Total GHG excl. LULUCF	181	225	239	258	260	300	277	356	311
Total GHG incl. LULUCF	166	210	224	244	245	285	263	342	297

Relative GHG Emissions

	1990	2000	2005	2010	2015	2020	2025	2030	
Total excl. LULUCF						low	high	low	high
Relative 1990	100%	124%	132%	143%	144%	166%	153%	197%	172%
Relative 2000	80%	100%	106%	115%	116%	133%	123%	159%	138%
Relative 2005	76%	94%	100%	108%	109%	125%	116%	149%	130%
Relative 2010	70%	87%	92%	100%	101%	116%	107%	138%	120%
Relative 2015	70%	86%	92%	99%	100%	115%	107%	137%	120%

Per-Capita Emissions

	1990	2000	2005	2010	2015	2020	2025	2030	
Total excl. LULUCF						low	high	low	high
Population (Mio)	20	24	27	29	31	33	33	35	35
Per-Capita Emissions (tCO2eq/cap)	9.1	9.2	8.9	8.9	8.3	9.0	8.4	10.2	8.9
Relative 1990	100%	101%	98%	98%	92%	100%	92%	112%	98%
Relative 2000	99%	100%	97%	97%	91%	99%	91%	111%	97%
Relative 2005	102%	103%	100%	100%	94%	101%	94%	114%	100%
Relative 2010	102%	103%	100%	100%	94%	102%	94%	114%	100%
Relative 2015	109%	110%	107%	107%	100%	108%	100%	122%	107%

Data Sources:

Cat1_CO2	PRIMAPHIST17	Cat5A1_CO2	UNFCCC CRF + Nat. Comms.
Cat2367_CO2	PRIMAPHIST17	Cat5A2_CO2	UNFCCC CRF + Nat. Comms.
Cat4_CO2	PRIMAPHIST17	Cat5LtoNonFL_CO	UNFCCC CRF + Nat. Comms.
Cat5_CO2	PRIMAPHIST17	Cat5GCMCMWM_C	UNFCCC CRF
Cat1_CH4	PRIMAPHIST17	Cat5A1ForestFires	UNFCCC Cat5 + EDGAR(IPCC Database)
Cat2367_CH4	PRIMAPHIST17	Cat5A1HWP_CO2	UNFCCC CRF + Nat. Comms.
Cat4_CH4	PRIMAPHIST17	Cat5bisA_CO2	UNFCCC CRF + NATCOMM.
Cat5_CH4	PRIMAPHIST17	Cat5bisB_CO2	UNFCCC CRF + NATCOMM.
Cat1_N2O	PRIMAPHIST17	Cat5bisC_CO2	UNFCCC CRF + NATCOMM.
Cat2367_N2O	PRIMAPHIST17	Cat5bisD_CO2	UNFCCC CRF + NATCOMM.
Cat4_N2O	PRIMAPHIST17	Cat5bisE_CO2	UNFCCC CRF + NATCOMM.
Cat5_N2O	PRIMAPHIST17	PRO_WM_Cat5_G	UNFCCC Annex I Reports
Cat0_HFCs	PRIMAPHIST17	Metric	GWP SAR
Cat0_PFCs	PRIMAPHIST17		
Cat0_SF6	PRIMAPHIST17		
Population	UN 2015 Population Projections MEDIUM		
GDP	IMF WEO 2015, PPP adjusted GDP, constant 2009 prices...		
	IPCC WG3 Scenario IMAGE AMPERE2-550-FullTech-HST		
	PRIMAPHIST16 description: www.pik-potsdam.de/primap-live/primap-hist/		
	Gratefully acknowledged in particular: PRIMAP, CAIT, CDIAC, EDGAR, IPCC, IEA, UNEP GAP Team, AMPERE Team and comments on earlier versions, in particular by Giacomo Grassi. Errors and misjudgements are our own. Malte Meinshausen & Ryan Alexander; The "Fiji COP23" Edition was enabled through support via the BMUB project UM14 41 4060		
	This Factsheet is available at www.climatecollege.unimelb.edu.au/indc-factsheets. Check out as well: www.climateactiontracker.org, www.mitigation-contributions.org, cait.wri.org, infographics.pbl.nl/indc, live.primap.org, www.unep.org/climatechange/pledgepipeline, and our twitter feed @ClimateCollege		



Various 'fair' contributions for a global 'least-cost' 2°C path (total incl. LULUCF):

2025 rel. 2010:	#N/A	2030 rel. 2010:	#N/A
LEADER		LEADER	
CDC	-11%	CDC	-22%
ECPC50	-23%	ECPC50	-40%
ECPC90	-11%	ECPC90	-24%
GDR	-8%	GDR	-17%
INDC HIGH	22%	INDC HIGH	34%
INDC LOW	40%	INDC LOW	62%

More info on www.mitigation-contributions.org

Shown fair contributions only indicative
"Fair" contributions for a global 'least-cost' 2°C track:
LEADER Leader
CDC Common-but-diff. per-cap. convergence
ECPC50 Eq. cum. Per-capita since 1950
ECPC90 Eq. cum. Per-capita since 1990
GDR Greenhouse Development Rights
#N/A No available data