

Shown: 2025 & 2030: Min/max of unconditional and conditional targets

Paris Agreement ratified on: 21/09/2016

Shown are averages for low and high or conditional and unconditional INDCs and their inter-extrapolations

Vanuatu

Per-Capita Emissions in 2030 rel. 2015 (excl. LULUCF): **-27%**

NDC 2025

NDC 2030

2015 World Rank

2025 World Rank

2030 World Rank

Share of World Emissions excl. LULUCF (Rank):

0.0% #175

0.0% #176

0.0% #177

Per-Capita Emissions (tCO2eq/cap)

2.7t #134

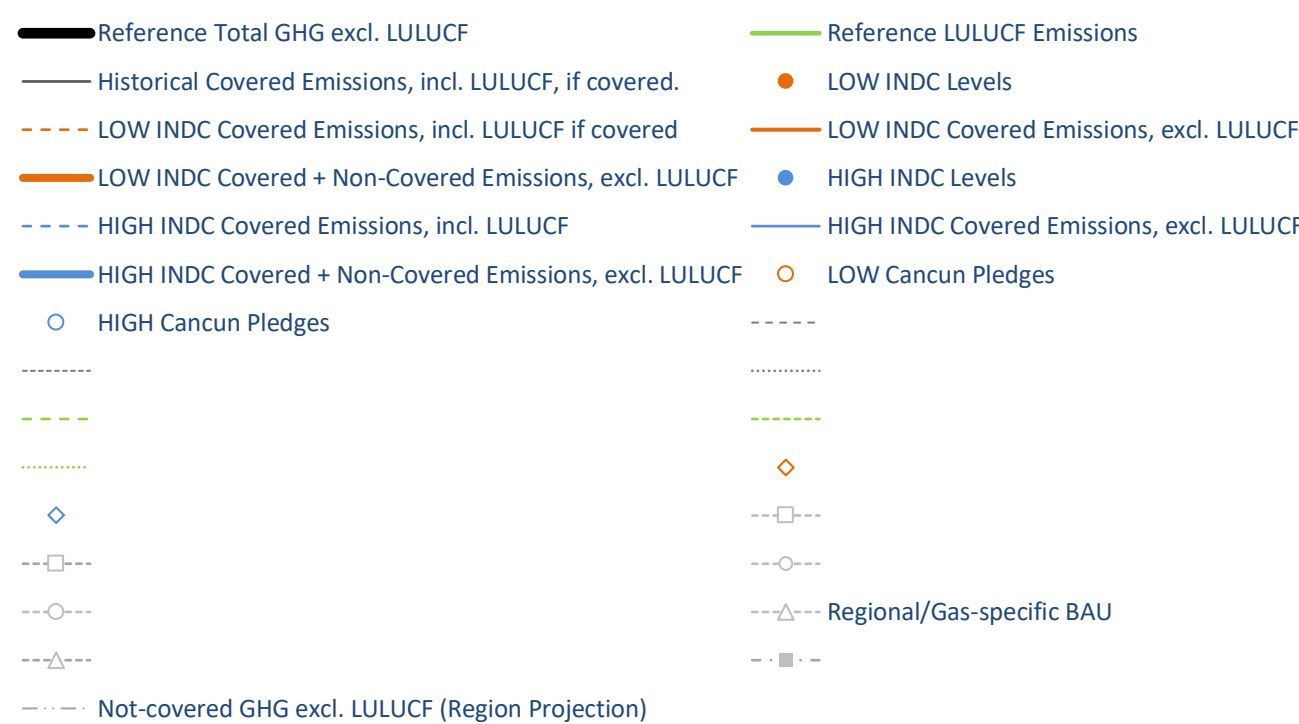
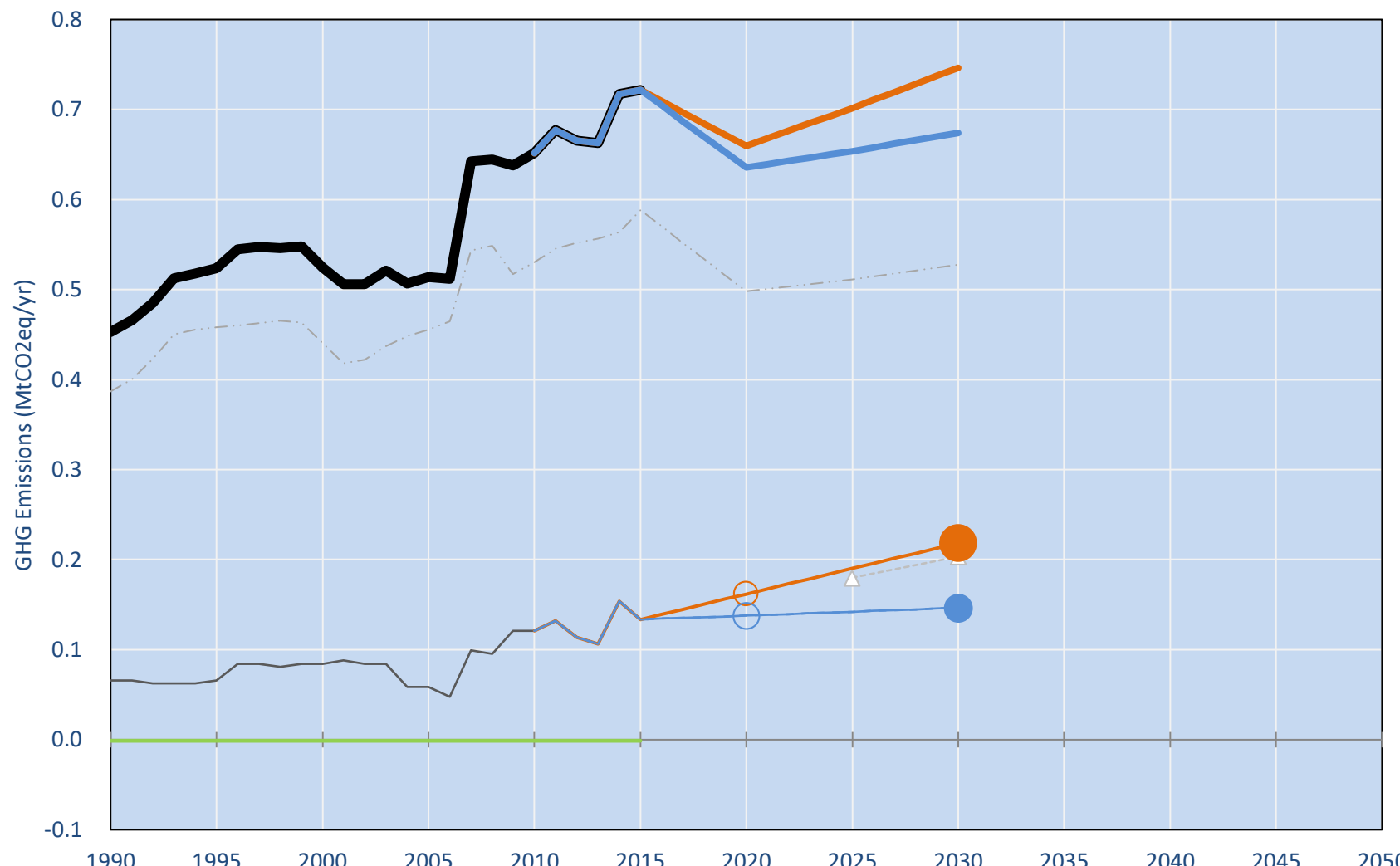
2.1t #156

2t #154

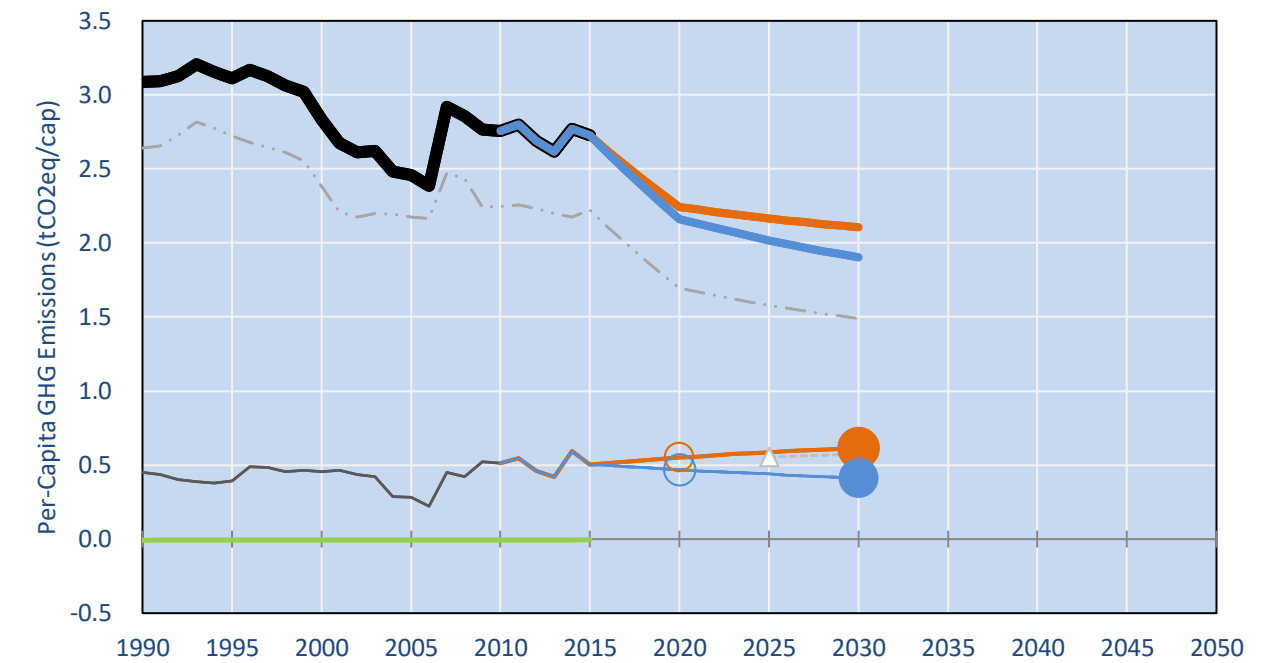
NDC: Reduction of emissions by 100% below BAU for electricity sub-sector and 30% for the energy sector by approaching 100% renewable energy subject to funding and support. (n/a (only CO2))

INDC Submitted: 29/09/2015

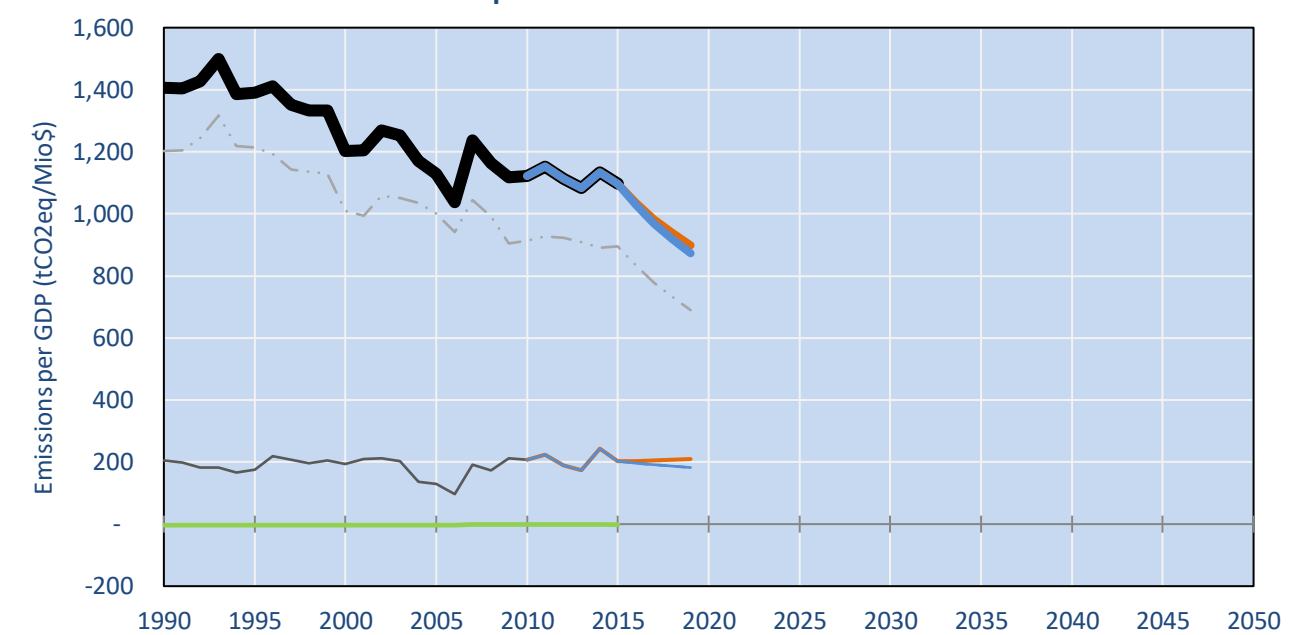
GHG Emissions



Per-Capita Emissions

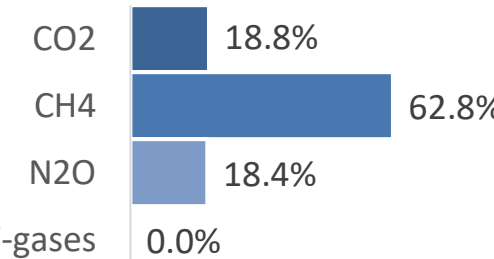


GHG Emissions per GDP

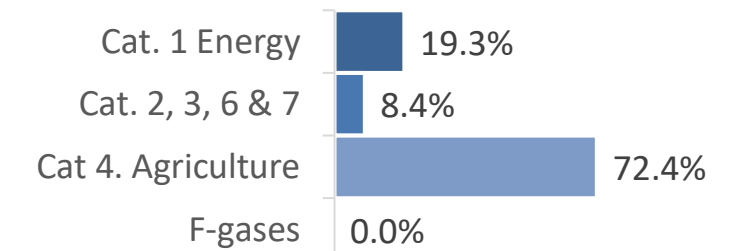


2015 Total GHG Emissions excl. LULUCF

By Gas:



By Sector:



GHG Emissions

	1990	2000	2005	2010	2015	2020		2025		2030	
(MtCO2eq/yr in GWP AR5)						low	high	low	high	low	high
Assumed LULUCF Accounting Credits (-)/Debits (+)											
NDC covered LULUCF Emissions											
NDC covered Emissions excl. LULUCF	0	0	0	0	0	0	0	0	0	0	0
Total GHG excl. LULUCF	0	1	1	1	1	1	1	1	1	1	1
Total GHG incl. LULUCF	0	1	1	1	1	1	1	1	1	1	1

Relative GHG Emissions

	1990	2000	2005	2010	2015	2020		2025		2030	
Total excl. LULUCF						low	high	low	high	low	high
Relative 1990	100%	116%	114%	144%	159%	146%	140%	155%	144%	165%	149%
Relative 2000	86%	100%	98%	124%	138%	126%	121%	134%	125%	142%	129%
Relative 2005	88%	102%	100%	127%	140%	128%	124%	136%	127%	145%	131%
Relative 2010	70%	81%	79%	100%	111%	101%	98%	108%	100%	115%	104%
Relative 2015	63%	73%	71%	90%	100%	91%	88%	97%	91%	103%	93%

Per-Capita Emissions

	1990	2000	2005	2010	2015	2020		2025		2030	
Total excl. LULUCF						low	high	low	high	low	high
Population (Mio)	0	0	0	0	0	0	0	0	0	0	0
Per-Capita Emissions (tCO2eq/cap)	3.1	2.8	2.5	2.8	2.7	2.2	2.2	2.2	2.0	2.1	1.9
Relative 1990	100%	92%	80%	89%	88%	73%	70%	70%	65%	68%	62%
Relative 2000	109%	100%	87%	97%	96%	79%	76%	76%	71%	74%	67%
Relative 2005	126%	115%	100%	112%	111%	91%	88%	88%	82%	86%	77%
Relative 2010	112%	103%	89%	100%	99%	81%	78%	79%	73%	76%	69%
Relative 2015	113%	104%	90%	101%	100%	82%	79%	79%	74%	77%	70%

Data Sources:

Cat1_CO2	PRIMAPHIST17	Cat5A1_CO2	UNFCCC CRF + Nat. Comms.
Cat2367_CO2	PRIMAPHIST17	Cat5A2_CO2	UNFCCC CRF + Nat. Comms.
Cat4_CO2	PRIMAPHIST17	Cat5LtoNonFL_CO2	UNFCCC CRF + Nat. Comms.
Cat5_CO2	PRIMAPHIST17	Cat5GCMCMWM_C	UNFCCC CRF
Cat1_CH4	PRIMAPHIST17	Cat5A1ForestFires	UNFCCC Cat5 + EDGAR(IPCC Database)
Cat2367_CH4	PRIMAPHIST17	Cat5A1HWP_CO2	UNFCCC CRF + Nat. Comms.
Cat4_CH4	PRIMAPHIST17	Cat5bisA_CO2	UNFCCC CRF + NATCOMM.
Cat5_CH4	PRIMAPHIST17	Cat5bisB_CO2	UNFCCC CRF + NATCOMM.
Cat1_N2O	PRIMAPHIST17	Cat5bisC_CO2	UNFCCC CRF + NATCOMM.
Cat2367_N2O	PRIMAPHIST17	Cat5bisD_CO2	UNFCCC CRF + NATCOMM.
Cat4_N2O	PRIMAPHIST17	Cat5bisE_CO2	UNFCCC CRF + NATCOMM.
Cat5_N2O	PRIMAPHIST17	PRO_WM_Cat5_G	UNFCCC Annex I Reports
Cat0_HFCs	PRIMAPHIST17	Metric	GWP AR5
Cat0_PFCs	PRIMAPHIST17		
Cat0_SF6	PRIMAPHIST17		
Population	UN 2015 Population Projections MEDIUM		
GDP	IMF WEO 2015, PPP adjusted GDP, constant 2009 prices...		
IPCC WG3 Scenario	IMAGE AMPERE2-550-FullTech-HST		
PRIMAPHIST16 description:	www.pik-potsdam.de/primap-live/primap-hist/		
Gratefully acknowledged in particular:	PRIMAP, CAIT, CDIAC, EDGAR, IPCC, IEA, UNEP Gap Team, AMPERE Team and comments on earlier versions, in particular by Giacomo Grassi. Errors and misjudgements are our own. Malte Meinshausen & Ryan Alexander; The "Fiji COP23" Edition was enabled through support via the BMUB project UM14 41 4060		
This Factsheet is available at	www.climatecollege.unimelb.edu.au/indc-factsheets. Check out as well: www.climateactiontracker.org, www.mitigation-contributions.org, cait.wri.org, infographics.pbl.nl/indc, live.primap.org, www.unep.org/climatechange/pledgepipeline, and our twitter feed @ClimateCollege		

climatecollege.unimelb.edu.au



Various 'fair' contributions for a global 'least-cost' 2°C path (total incl. LULUCF):

More info on www.mitigation-contributions.org

2025 rel. 2010:

2030 rel. 2010:

LEADER
CDC
ECPC50
ECPC90
GDR
INDC HIGH
INDC LOW

#N/A
#N/A
#N/A
#N/A
#N/A
0%
8%

LEADER
CDC
ECPC50
ECPC90
GDR
INDC HIGH
INDC LOW

#N/A
#N/A
#N/A
#N/A
#N/A
4%
15%

"Fair" contributions for a global 'least-cost' 2°C track:
LEADER Leader
CDC Common-but-diff. per-cap. convergence
ECPC50 Eq. cum. Per-capita since 1950
ECPC90 Eq. cum. Per-capita since 1990
GDR Greenhouse Development Rights
#N/A No available data