



United Arab Emirates

Per-Capita Emissions in 2030 rel. 2015 (excl. LULUCF): **-20%**

NDC 2025

NDC 2030

2015 World Rank

2025 World Rank

2030 World Rank

-24% rel. BAU of 292.2 Mt

Share of World Emissions excl. LULUCF (Rank):

0.6% #33

0.5% #36

0.5% #38

Per-Capita Emissions (tCO2eq/cap)

31t #5

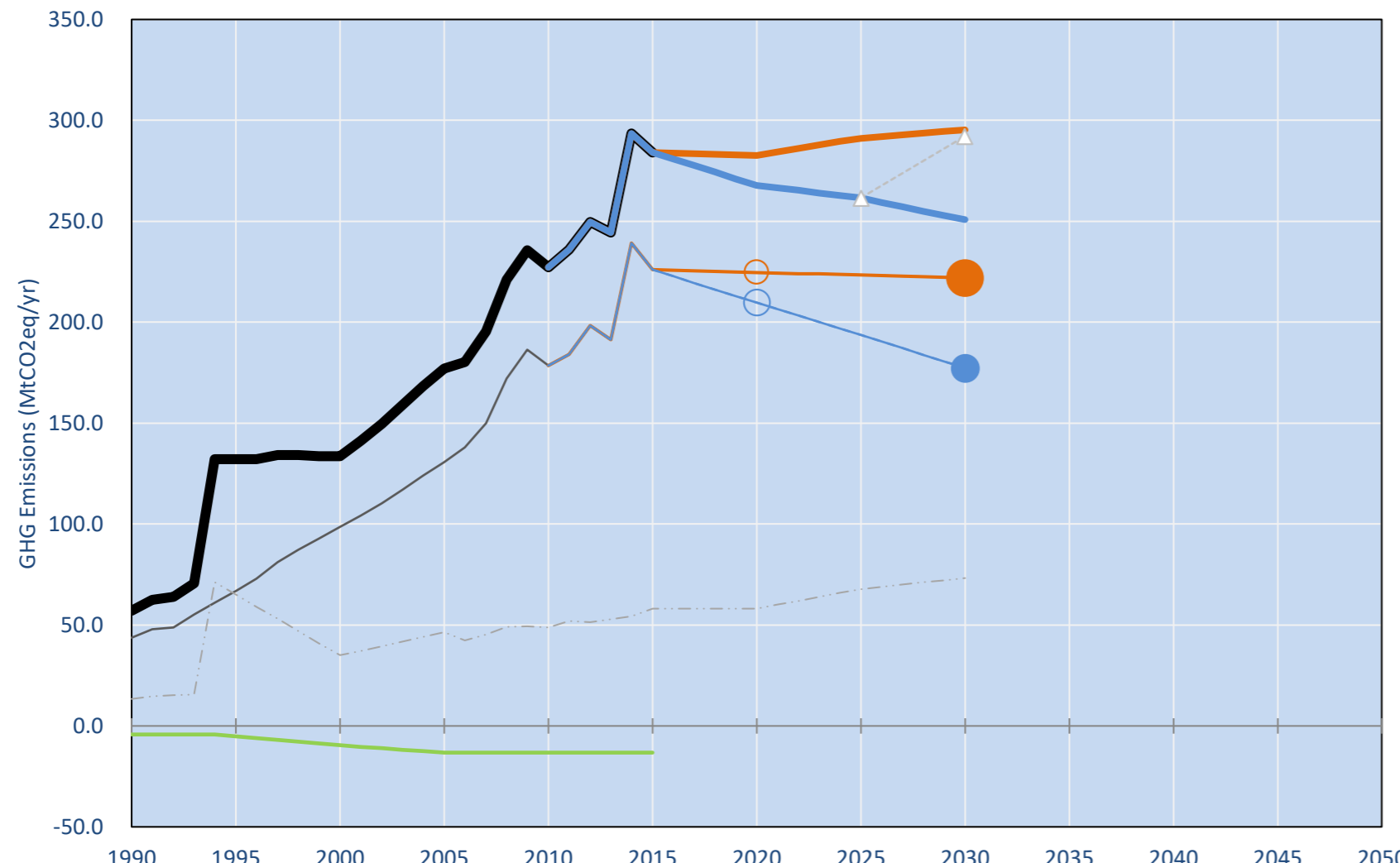
26.5t #7

24.9t #7

NDC: Policies and measures, with clean energy (nuclear and renewable) target of 24% by 2021, starting from 0.2% in 2014. . ()

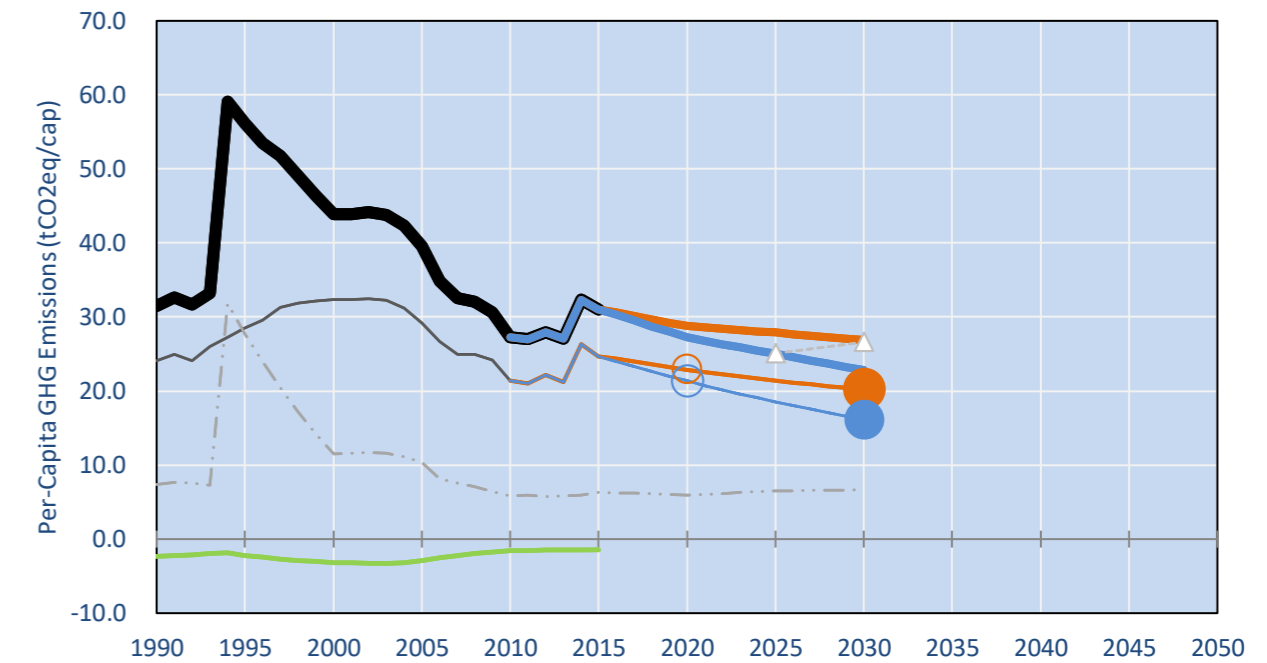
INDC Submitted: 22/10/2015

GHG Emissions

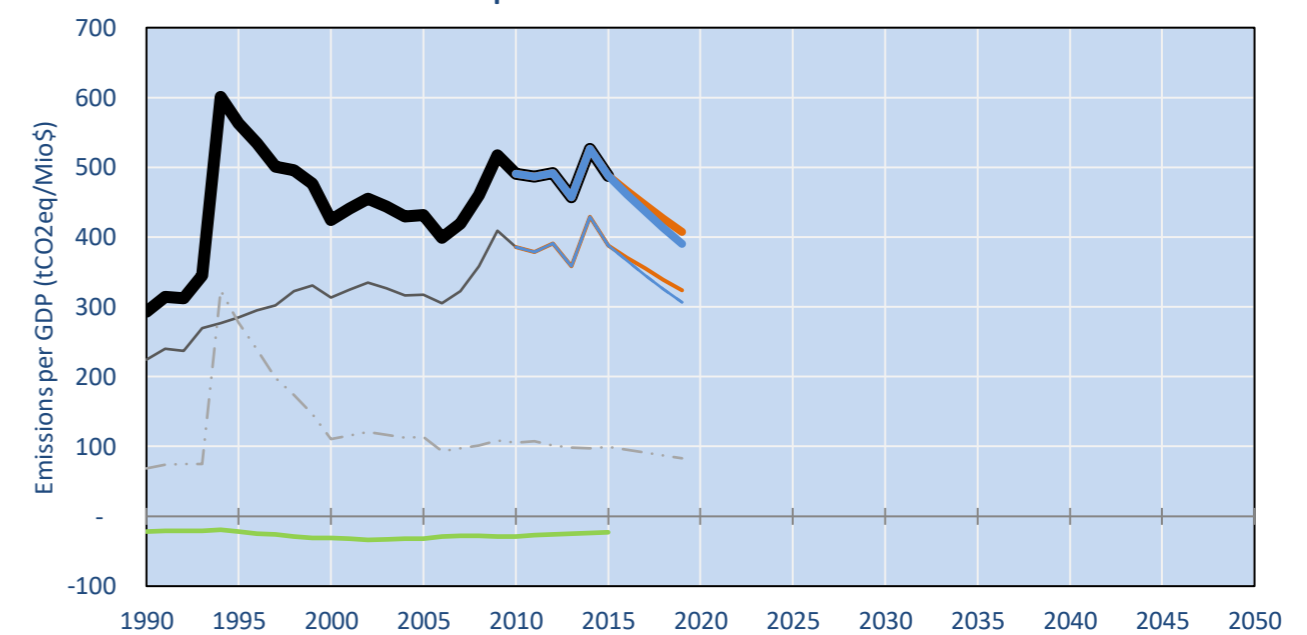


- Reference Total GHG excl. LULUCF
- Historical Covered Emissions, incl. LULUCF, if covered.
- LOW INDC Covered Emissions, incl. LULUCF if covered
- LOW INDC Covered + Non-Covered Emissions, excl. LULUCF
- HIGH INDC Covered Emissions, incl. LULUCF
- HIGH INDC Covered + Non-Covered Emissions, excl. LULUCF
- HIGH Cancun Pledges
- Reference LULUCF Emissions
- LOW INDC Levels
- LOW INDC Covered Emissions, excl. LULUCF
- HIGH INDC Levels
- HIGH INDC Covered Emissions, excl. LULUCF
- LOW Cancun Pledges
- Regional/Gas-specific BAU
- Not-covered GHG excl. LULUCF (Region Projection)

Per-Capita Emissions



GHG Emissions per GDP



2015 Total GHG Emissions excl. LULUCF

By Gas:

CO2 85.3%
CH4 13.0%
N2O 1.1%
F-gases 0.6%

By Sector:

Cat. 1 Energy 90.1%
Cat. 2, 3, 6 & 7 7.9%
Cat 4. Agriculture 1.5%
F-gases 0.6%

GHG Emissions

	1990	2000	2005	2010	2015	2020	2025	2030	
(MtCO2eq/yr in GWP SAR)						low	high	low	high
Assumed LULUCF Accounting Credits (-)/Debits (+)									
NDC covered LULUCF Emissions									
NDC covered Emissions excl. LULUCF	44	99	131	179	226	225	210	223	194
Total GHG excl. LULUCF	57	134	177	227	284	283	268	291	261
Total GHG incl. LULUCF	53	124	164	214	271	270	255	278	248

Relative GHG Emissions

	1990	2000	2005	2010	2015	2020	2025	2030	
Total excl. LULUCF						low	high	low	high
Relative 1990	100%	234%	310%	398%	497%	495%	469%	510%	458%
Relative 2000	43%	100%	133%	170%	212%	211%	200%	218%	196%
Relative 2005	32%	75%	100%	128%	160%	160%	151%	164%	148%
Relative 2010	25%	59%	78%	100%	125%	124%	118%	128%	115%
Relative 2015	20%	47%	62%	80%	100%	100%	94%	103%	92%

Per-Capita Emissions

	1990	2000	2005	2010	2015	2020	2025	2030	
Total excl. LULUCF						low	high	low	high
Population (Mio)	2	3	4	8	9	10	10	10	11
Per-Capita Emissions (tCO2eq/cap)	31.5	43.8	39.5	27.3	31.0	28.8	27.3	27.9	25.1
Relative 1990	100%	139%	125%	87%	98%	91%	87%	89%	80%
Relative 2000	72%	100%	90%	62%	71%	66%	62%	64%	57%
Relative 2005	80%	111%	100%	69%	78%	73%	69%	71%	63%
Relative 2010	116%	161%	145%	100%	114%	106%	100%	102%	92%
Relative 2015	102%	141%	127%	88%	100%	93%	88%	90%	81%

Data Sources:

Cat1_CO2	PRIMAPHIST17	Cat5A1_CO2	UNFCCC CRF + Nat. Comms.
Cat2367_CO2	PRIMAPHIST17	Cat5A2_CO2	UNFCCC CRF + Nat. Comms.
Cat4_CO2	PRIMAPHIST17	Cat5LtoNonFL_CO2	UNFCCC CRF + Nat. Comms.
Cat5_CO2	PRIMAPHIST17	Cat5GCMCMWM_C	UNFCCC CRF
Cat1_CH4	PRIMAPHIST17	Cat5A1ForestFires	UNFCCC Cat5 + EDGAR(IPCC Database)
Cat2367_CH4	PRIMAPHIST17	Cat5A1HWP_CO2	UNFCCC CRF + Nat. Comms.
Cat4_CH4	PRIMAPHIST17	Cat5bisA_CO2	UNFCCC CRF + NATCOMM.
Cat5_CH4	PRIMAPHIST17	Cat5bisB_CO2	UNFCCC CRF + NATCOMM.
Cat1_N2O	PRIMAPHIST17	Cat5bisC_CO2	UNFCCC CRF + NATCOMM.
Cat2367_N2O	PRIMAPHIST17	Cat5bisD_CO2	UNFCCC CRF + NATCOMM.
Cat4_N2O	PRIMAPHIST17	Cat5bisE_CO2	UNFCCC CRF + NATCOMM.
Cat5_N2O	PRIMAPHIST17	PRO_WM_Cat5_G	UNFCCC Annex I Reports
Cat0_HFCs	PRIMAPHIST17	Metric	GWP SAR
Cat0_PFCs	PRIMAPHIST17		
Cat0_SF6	PRIMAPHIST17		
Population	UN 2015 Population Projections MEDIUM		
GDP	IMF WEO 2015, PPP adjusted GDP, constant 2009 prices...		
	IPCC WG3 Scenario IMAGE AMPERE2-550-FullTech-HST		
	PRIMAPHIST16 description: www.pik-potsdam.de/primap-live/primap-hist/		
	Gratefully acknowledged in particular: PRIMAP, CAIT, CDIAC, EDGAR, IPCC, IEA, UNEP GAP Team, AMPERE Team and comments on earlier versions, in particular by Giacomo Grassi. Errors and misjudgements are our own. Malte Meinshausen & Ryan Alexander; The "Fiji COP23" Edition was enabled through support via the BMUB project UM14 41 4060		

climatecollege.unimelb.edu.au



Meinshausen, Alexander et al., www.climatecollege.unimelb.edu.au/indc-factsheets, The University of Melbourne

Various 'fair' contributions for a global 'least-cost' 2°C path (total incl. LULUCF):

2025 rel. 2010:		2030 rel. 2010:	
LEADER	#N/A	LEADER	#N/A
CDC	#N/A	CDC	#N/A
ECPC50	#N/A	ECPC50	#N/A
ECPC90	#N/A	ECPC90	#N/A
GDR	#N/A	GDR	#N/A
INDC HIGH	16%	INDC HIGH	11%
INDC LOW	30%	INDC LOW	32%

More info on www.mitigation-contributions.org

"Fair" contributions for a global 'least-cost' 2°C track:
LEADER Leader
CDC Common-but-diff. per-cap. convergence
ECPC50 Eq. cum. Per-capita since 1950
ECPC90 Eq. cum. Per-capita since 1990
GDR Greenhouse Development Rights
#N/A No available data