



United Arab Emirates

Per-Capita Emissions in 2030 rel. 2015 (excl. LULUCF):

-20%

NDC 2025

NDC 2030

2015 World Rank

2025 World Rank

2030 World Rank

-24% rel. BAU of 292.2 Mt

Share of World Emissions excl. LULUCF (Rank):

0.6% #33

0.5% #36

0.5% #38

Per-Capita Emissions (tCO2eq/cap)

31.8t #5

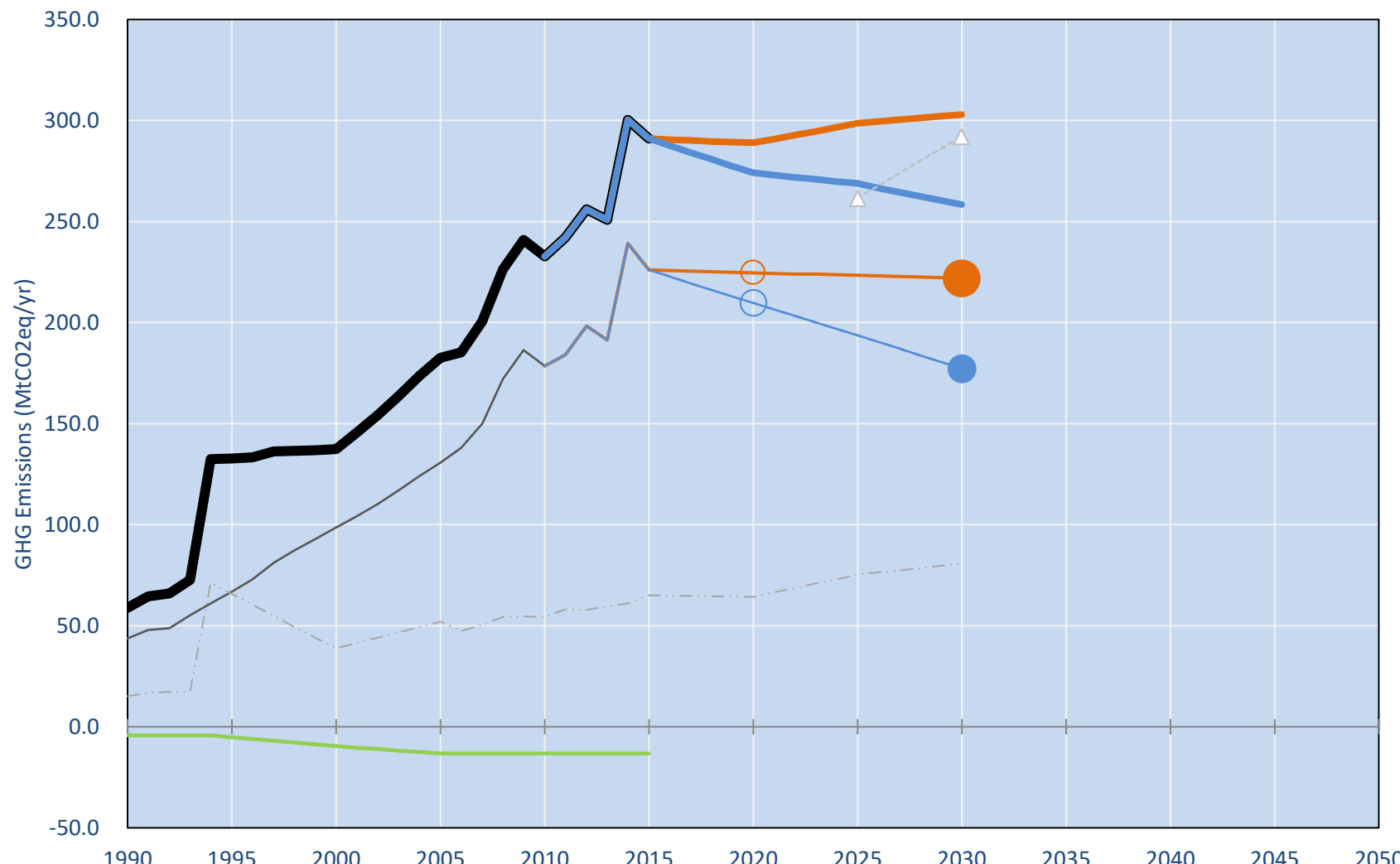
27.2t #7

25.6t #7

NDC: Policies and measures, with clean energy (nuclear and renewable) target of 24% by 2021, starting from 0.2% in 2014. . ()

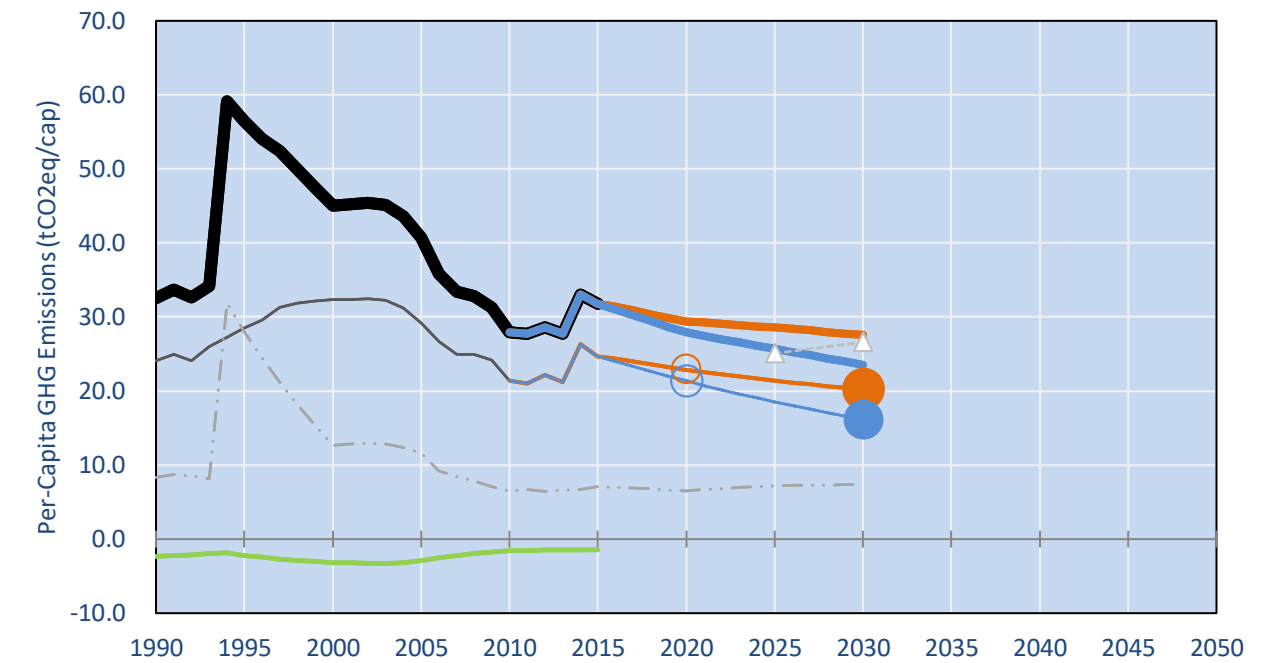
INDC Submitted: 22/10/2015

GHG Emissions

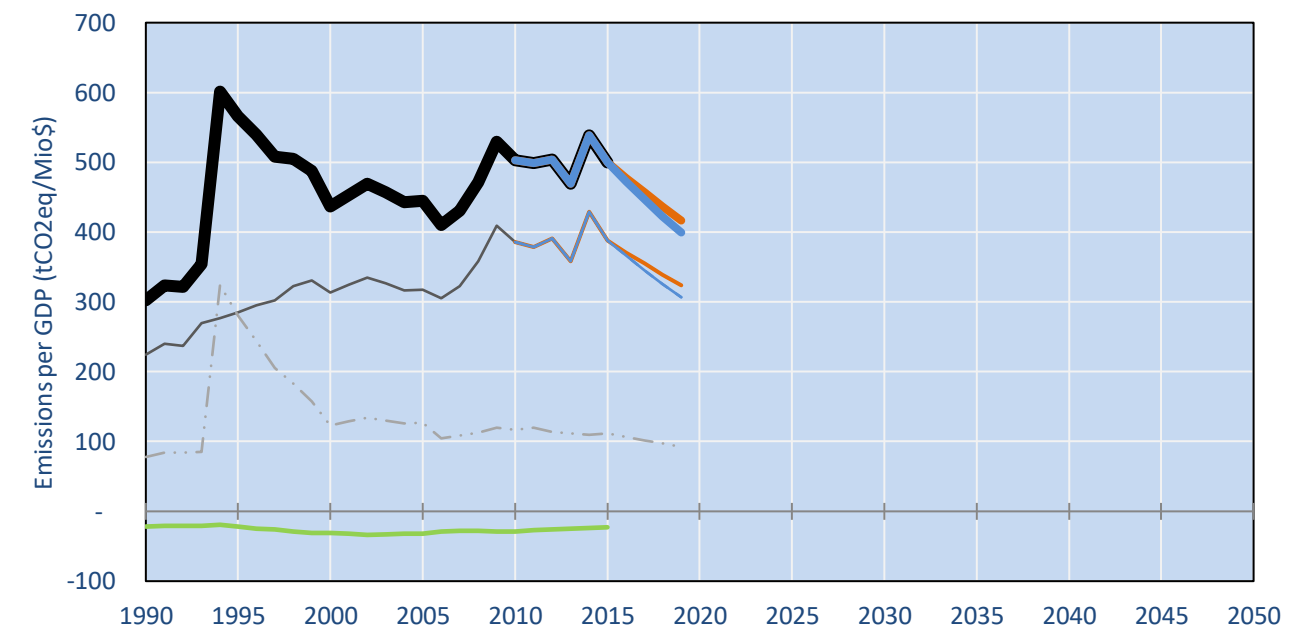


- Reference Total GHG excl. LULUCF
- Historical Covered Emissions, incl. LULUCF, if covered.
- LOW INDC Covered Emissions, incl. LULUCF if covered
- LOW INDC Covered + Non-Covered Emissions, excl. LULUCF
- HIGH INDC Covered Emissions, incl. LULUCF
- HIGH INDC Covered + Non-Covered Emissions, excl. LULUCF
- HIGH Cancun Pledges
- Reference LULUCF Emissions
- LOW INDC Levels
- LOW INDC Covered Emissions, excl. LULUCF
- HIGH INDC Levels
- HIGH INDC Covered Emissions, excl. LULUCF
- LOW Cancun Pledges
- Regional/Gas-specific BAU
- Not-covered GHG excl. LULUCF (Region Projection)

Per-Capita Emissions



GHG Emissions per GDP



2015 Total GHG Emissions excl. LULUCF

By Gas:

CO2	83.3%
CH4	15.1%
N2O	1.0%
F-gases	0.6%

By Sector:

Cat. 1 Energy	89.8%
Cat. 2, 3, 6 & 7	8.0%
Cat 4. Agriculture	1.6%
F-gases	0.6%

GHG Emissions

	1990	2000	2005	2010	2015	2020		2025		2030	
						low	high	low	high	low	high
(MtCO2eq/yr in GWP AR4)											
Assumed LULUCF Accounting Credits (-)/Debits (+)	-	-	-	-	-	-	-	-	-	-	-
NDC covered LULUCF Emissions	-	-	-	-	-	-	-	-	-	-	-
NDC covered Emissions excl. LULUCF	44	99	131	179	226	225	210	223	194	222	177
Total GHG excl. LULUCF	59	137	183	233	291	289	274	299	269	303	258
Total GHG incl. LULUCF	55	128	169	220	278	276	261	285	256	290	245

Relative GHG Emissions

	1990	2000	2005	2010	2015	2020		2025		2030	
						low	high	low	high	low	high
Total excl. LULUCF											
Relative 1990	100%	233%	310%	395%	494%	491%	465%	507%	457%	514%	439%
Relative 2000	43%	100%	133%	169%	212%	210%	199%	217%	196%	220%	188%
Relative 2005	32%	75%	100%	127%	159%	158%	150%	163%	147%	166%	141%
Relative 2010	25%	59%	78%	100%	125%	124%	118%	128%	116%	130%	111%
Relative 2015	20%	47%	63%	80%	100%	99%	94%	103%	92%	104%	89%

Per-Capita Emissions

	1990	2000	2005	2010	2015	2020		2025		2030	
						low	high	low	high	low	high
Total excl. LULUCF											
Population (Mio)	2	3	4	8	9	10	10	10	10	11	11
Per-Capita Emissions (tCO2eq/cap)	32.5	45.1	40.7	27.9	31.8	29.4	27.9	28.6	25.8	27.6	23.5
Relative 1990	100%	139%	125%	86%	98%	90%	86%	88%	79%	85%	72%
Relative 2000	72%	100%	90%	62%	71%	65%	62%	63%	57%	61%	52%
Relative 2005	80%	111%	100%	69%	78%	72%	68%	70%	63%	68%	58%
Relative 2010	116%	161%	146%	100%	114%	105%	100%	102%	92%	99%	84%
Relative 2015	102%	142%	128%	88%	100%	93%	88%	90%	81%	87%	74%

Data Sources:

Cat1_CO2	PRIMAPHIST17	Cat5A1_CO2	UNFCCC CRF + Nat. Comms.
Cat2367_CO2	PRIMAPHIST17	Cat5A2_CO2	UNFCCC CRF + Nat. Comms.
Cat4_CO2	PRIMAPHIST17	Cat5LtoNonFL_CO2	UNFCCC CRF + Nat. Comms.
Cat5_CO2	PRIMAPHIST17	Cat5GCMCMWM_C	UNFCCC CRF
Cat1_CH4	PRIMAPHIST17	Cat5A1ForestFires	UNFCCC Cat5 + EDGAR(IPCC Database)
Cat2367_CH4	PRIMAPHIST17	Cat5A1HWP_CO2	UNFCCC CRF + Nat. Comms.
Cat4_CH4	PRIMAPHIST17	Cat5bisA_CO2	UNFCCC CRF + NATCOMM.
Cat5_CH4	PRIMAPHIST17	Cat5bisB_CO2	UNFCCC CRF + NATCOMM.
Cat1_N2O	PRIMAPHIST17	Cat5bisC_CO2	UNFCCC CRF + NATCOMM.
Cat2367_N2O	PRIMAPHIST17	Cat5bisD_CO2	UNFCCC CRF + NATCOMM.
Cat4_N2O	PRIMAPHIST17	Cat5bisE_CO2	UNFCCC CRF + NATCOMM.
Cat5_N2O	PRIMAPHIST17	PRO_WM_Cat5_G	UNFCCC Annex I Reports
Cat0_HFCs	PRIMAPHIST17	Metric	GWP AR4
Cat0_PFCs	PRIMAPHIST17		
Cat0_SF6	PRIMAPHIST17		
Population	UN 2015 Population Projections MEDIUM		
GDP	IMF WEO 2015, PPP adjusted GDP, constant 2009 prices...		
	IPCC WG3 Scenario IMAGE AMPERE2-550-FullTech-HST		
	PRIMAPHIST16 description: www.pik-potsdam.de/primap-live/primap-hist/		
	Gratefully acknowledged in particular: PRIMAP, CAIT, CDIAC, EDGAR, IPCC, IEA, UNEP GAP Team, AMPERE Team and comments on earlier versions, in particular by Giacomo Grassi. Errors and misjudgements are our own. Malte Meinshausen & Ryan Alexander; The "Fiji COP23" Edition was enabled through support via the BMUB project UM14 41 4060		
	This Factsheet is available at www.climatecollege.unimelb.edu.au/indc-factsheets. Check out as well: www.climateactiontracker.org, www.mitigation-contributions.org, cait.wri.org, infographics.pbl.nl/indc, live.primap.org, www.unep.org/climatechange/pledgepipeline, and our twitter feed @ClimateCollege		

climatecollege.unimelb.edu.au



Various 'fair' contributions for a global 'least-cost' 2°C path (total incl. LULUCF):

More info on www.mitigation-contributions.org

2025 rel. 2010:		2030 rel. 2010:	
LEADER	#N/A	LEADER	#N/A
CDC	#N/A	CDC	#N/A
ECPC50	#N/A	ECPC50	#N/A
ECPC90	#N/A	ECPC90	#N/A
GDR	#N/A	GDR	#N/A
INDC HIGH	16%	INDC HIGH	12%
INDC LOW	30%	INDC LOW	32%

"Fair" contributions for a global 'least-cost' 2°C track:

LEADER	Leader
CDC	Common-but-diff. per-cap. convergence
ECPC50	Eq. cum. Per-capita since 1950
ECPC90	Eq. cum. Per-capita since 1990
GDR	Greenhouse Development Rights
#N/A	No available data