



Tonga

Per-Capita Emissions in 2030 rel. 2015 (excl. LULUCF):



-8%

NDC 2025

NDC 2030

2015 World Rank

2025 World Rank

2030 World Rank

-10% rel. BAU of 0.3 Mt

Share of World Emissions excl. LULUCF (Rank):

0.0% #186

0.0% #185

0.0% #185

Per-Capita Emissions (tCO2eq/cap)

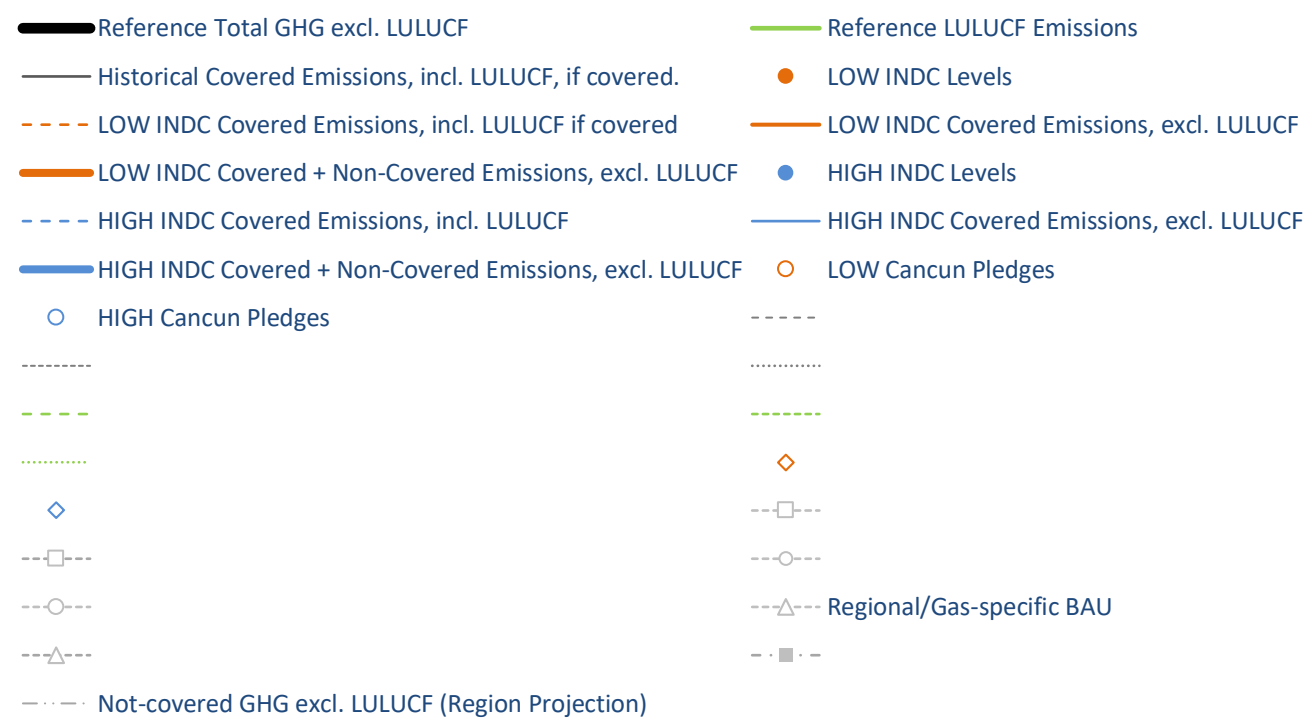
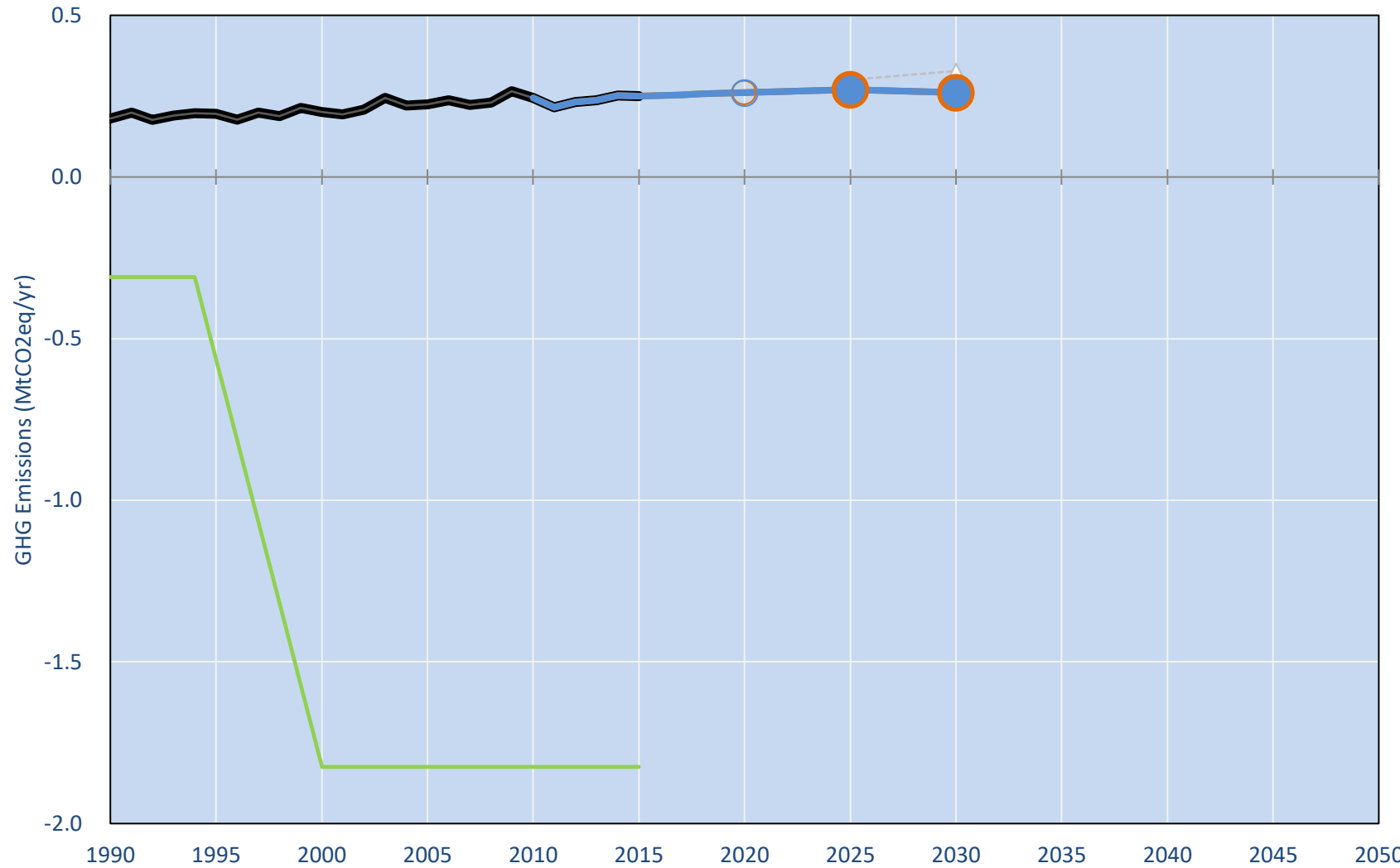
2.4t #144

2.3t #141

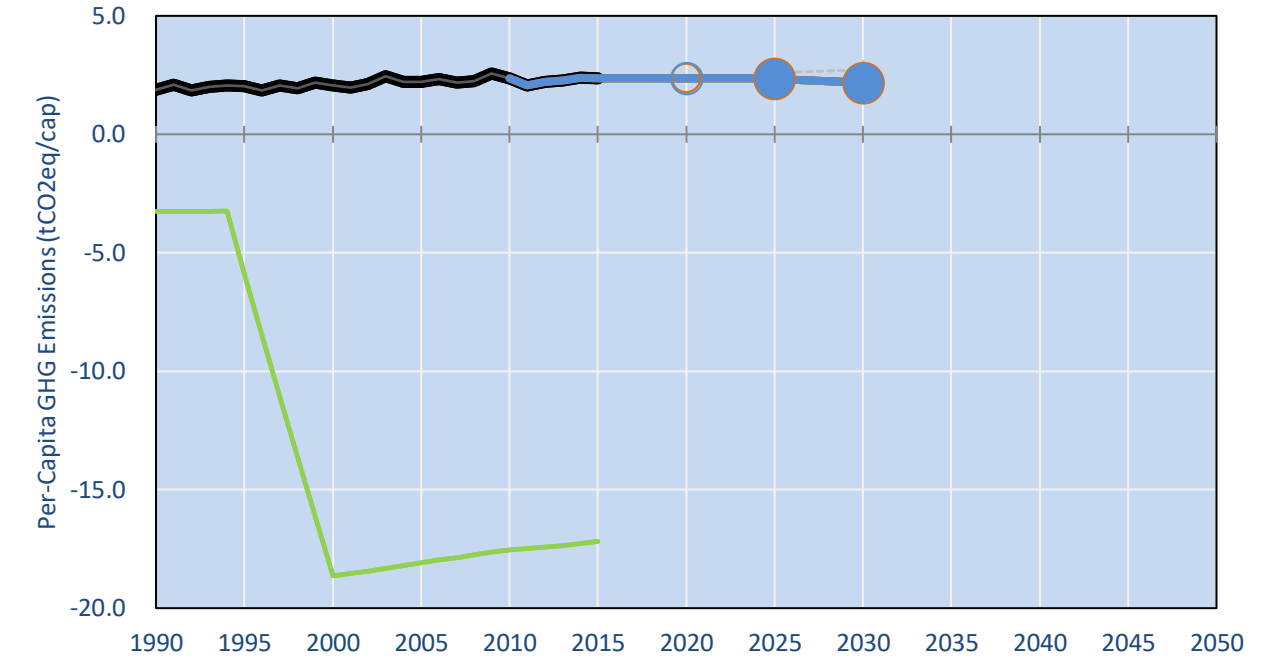
2.2t #148

NDC Submitted: 4/12/2015

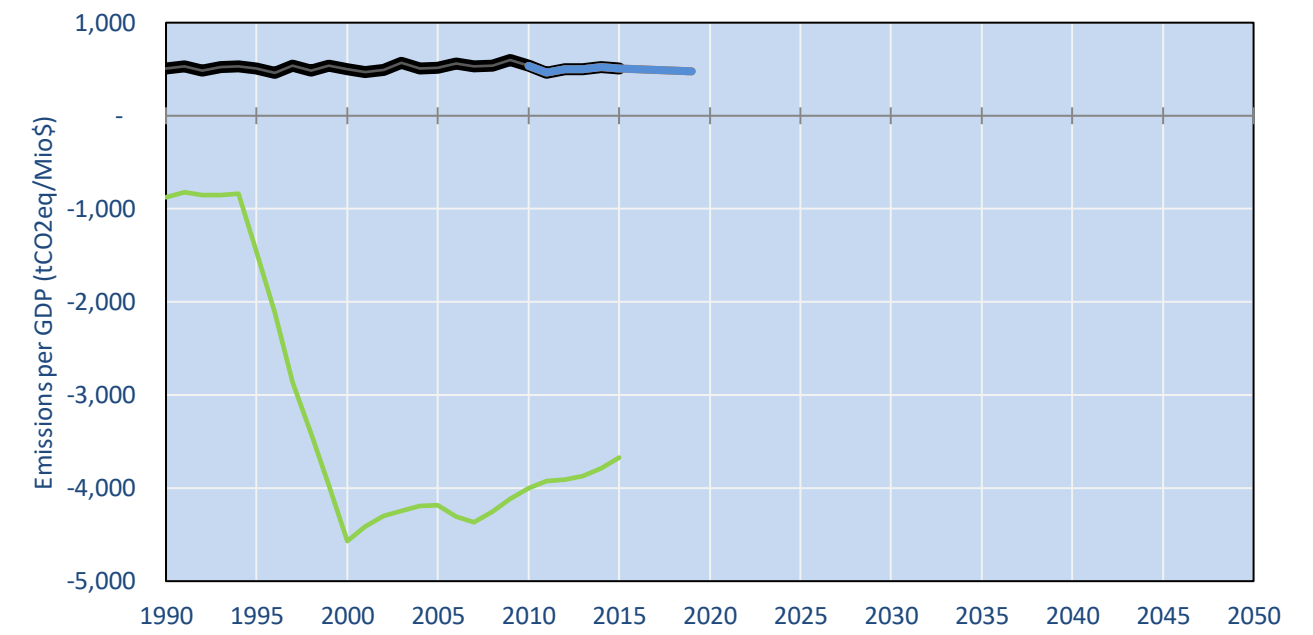
GHG Emissions



Per-Capita Emissions

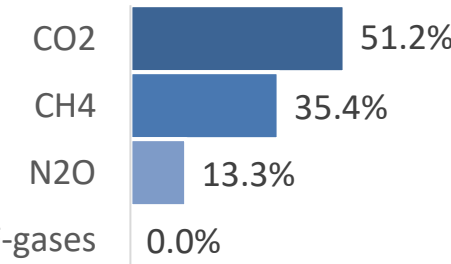


GHG Emissions per GDP

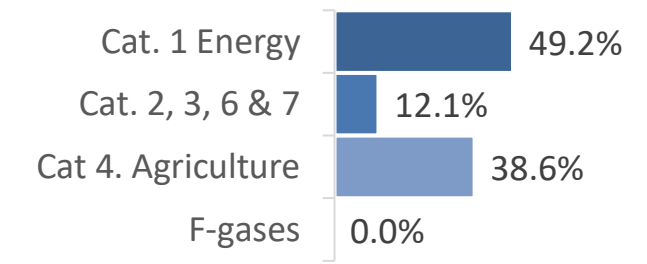


2015 Total GHG Emissions excl. LULUCF

By Gas:



By Sector:



GHG Emissions

	1990	2000	2005	2010	2015	2020	2025	2030	
(MtCO2eq/yr in GWP AR5)						low	high	low	high
Assumed LULUCF Accounting Credits (-)/Debits (+)									
NDC covered LULUCF Emissions									
NDC covered Emissions excl. LULUCF	0	0	0	0	0	0	0	0	0
Total GHG excl. LULUCF	0	0	0	0	0	0	0	0	0
Total GHG incl. LULUCF	-	0	2	2	2	2	2	2	2

Relative GHG Emissions

	1990	2000	2005	2010	2015	2020	2025	2030	
Total excl. LULUCF						low	high	low	high
Relative 1990	100%	112%	124%	136%	139%	145%	145%	145%	145%
Relative 2000	90%	100%	111%	122%	125%	130%	130%	130%	130%
Relative 2005	80%	90%	100%	109%	112%	116%	116%	116%	116%
Relative 2010	74%	82%	92%	100%	102%	107%	111%	111%	107%
Relative 2015	72%	80%	89%	98%	100%	104%	108%	108%	104%

Per-Capita Emissions

	1990	2000	2005	2010	2015	2020	2025	2030	
Total excl. LULUCF						low	high	low	high
Population (Mio)	0	0	0	0	0	0	0	0	0
Per-Capita Emissions (tCO2eq/cap)	1.9	2.1	2.2	2.4	2.4	2.4	2.3	2.2	2.2
Relative 1990	100%	108%	117%	124%	125%	124%	124%	114%	114%
Relative 2000	92%	100%	108%	115%	115%	115%	114%	105%	105%
Relative 2005	85%	93%	100%	106%	106%	106%	106%	97%	97%
Relative 2010	80%	87%	94%	100%	100%	100%	100%	92%	92%
Relative 2015	80%	87%	94%	100%	100%	100%	100%	92%	92%

Data Sources:

Cat1_CO2	PRIMAPHIST17	Cat5A1_CO2	UNFCCC CRF + Nat. Comms.
Cat2367_CO2	PRIMAPHIST17	Cat5A2_CO2	UNFCCC CRF + Nat. Comms.
Cat4_CO2	PRIMAPHIST17	Cat5LtoNonFL_CO2	UNFCCC CRF + Nat. Comms.
Cat5_CO2	PRIMAPHIST17	Cat5GCMWMM_C	UNFCCC CRF
Cat1_CH4	PRIMAPHIST17	Cat5A1ForestFires	UNFCCC Cat5 + EDGAR(IPCC Database)
Cat2367_CH4	PRIMAPHIST17	Cat5A1HWP_CO2	UNFCCC CRF + Nat. Comms.
Cat4_CH4	PRIMAPHIST17	Cat5bisA_CO2	UNFCCC CRF + NATCOMM.
Cat5_CH4	PRIMAPHIST17	Cat5bisB_CO2	UNFCCC CRF + NATCOMM.
Cat1_N2O	PRIMAPHIST17	Cat5bisC_CO2	UNFCCC CRF + NATCOMM.
Cat2367_N2O	PRIMAPHIST17	Cat5bisD_CO2	UNFCCC CRF + NATCOMM.
Cat4_N2O	PRIMAPHIST17	Cat5bisE_CO2	UNFCCC CRF + NATCOMM.
Cat5_N2O	PRIMAPHIST17	PRO_WM_Cat5_G	UNFCCC Annex I Reports
Cat0_HFCs	PRIMAPHIST17	Metric	GWP AR5
Cat0_PFCs	PRIMAPHIST17		
Cat0_SF6	PRIMAPHIST17		
Population	UN 2015 Population Projections MEDIUM		
GDP	IMF WEO 2015, PPP adjusted GDP, constant 2009 prices...		
	IPCC WG3 Scenario IMAGE AMPERE2-550-FullTech-HST		
	PRIMAPHIST16 description: www.pik-potsdam.de/primap-live/primap-hist/		
	Gratefully acknowledged in particular: PRIMAP, CAIT, CDIAC, EDGAR, IPCC, IEA, UNEP Gap Team, AMPERE Team and comments on earlier versions, in particular by Giacomo Grassi. Errors and misjudgements are our own. Malte Meinshausen & Ryan Alexander; The "Fiji COP23" Edition was enabled through support via the BMUB project UM14 41 4060		
	This Factsheet is available at www.climatecollege.unimelb.edu.au/indc-factsheets. Check out as well: www.climateactiontracker.org, www.mitigation-contributions.org, cait.wri.org, infographics.pbl.nl/indc, live.primap.org, www.unep.org/climatechange/pledgepipeline, and our twitter feed @ClimateCollege		

climatecollege.unimelb.edu.au



Various 'fair' contributions for a global 'least-cost' 2°C path (total incl. LULUCF):

2025 rel. 2010:		2030 rel. 2010:		More info on www.mitigation-contributions.org	
LEADER	#N/A	LEADER	#N/A	No results shown, as 2010 total incl. LULUCF emissions below zero	
CDC	#N/A	CDC	#N/A	"Fair" contributions for a global 'least-cost' 2°C track:	
ECPC50	#N/A	ECPC50	#N/A	LEADER	Leader
ECPC90	#N/A	ECPC90	#N/A	CDC	Common-but-diff. per-cap. convergence
GDR	#N/A	GDR	#N/A	ECPC50	Eq. cum. Per-capita since 1950
INDC HIGH	#N/A	INDC HIGH	#N/A	ECPC90	Eq. cum. Per-capita since 1990
INDC LOW	#N/A	INDC LOW	#N/A	GDR	Greenhouse Development Rights
				#N/A	No available data