

The former Yugoslav Republic of Macedonia

Shown are averages for low and high or conditional and unconditional INDCs and their inter-extrapolations

Per-Capita Emissions in 2030 rel. 2015 (excl. LULUCF): **+42%**

2015 World Rank 2025 World Rank 2030 World Rank

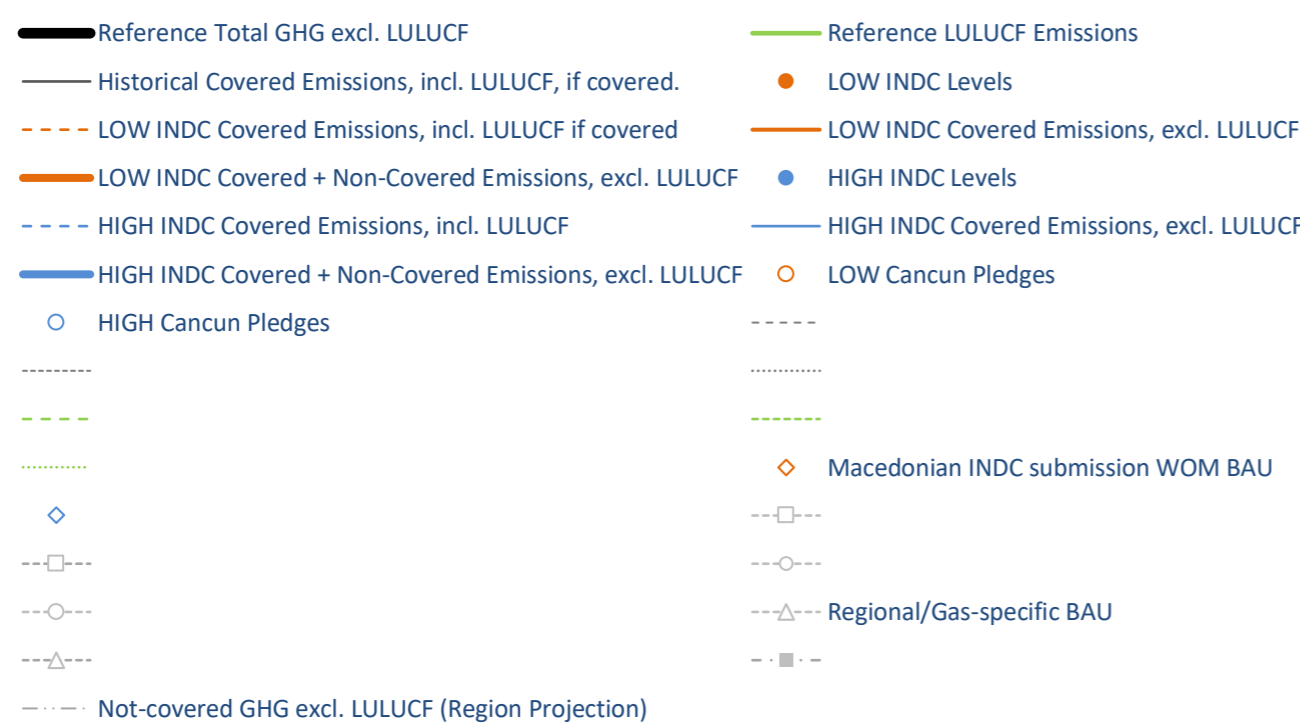
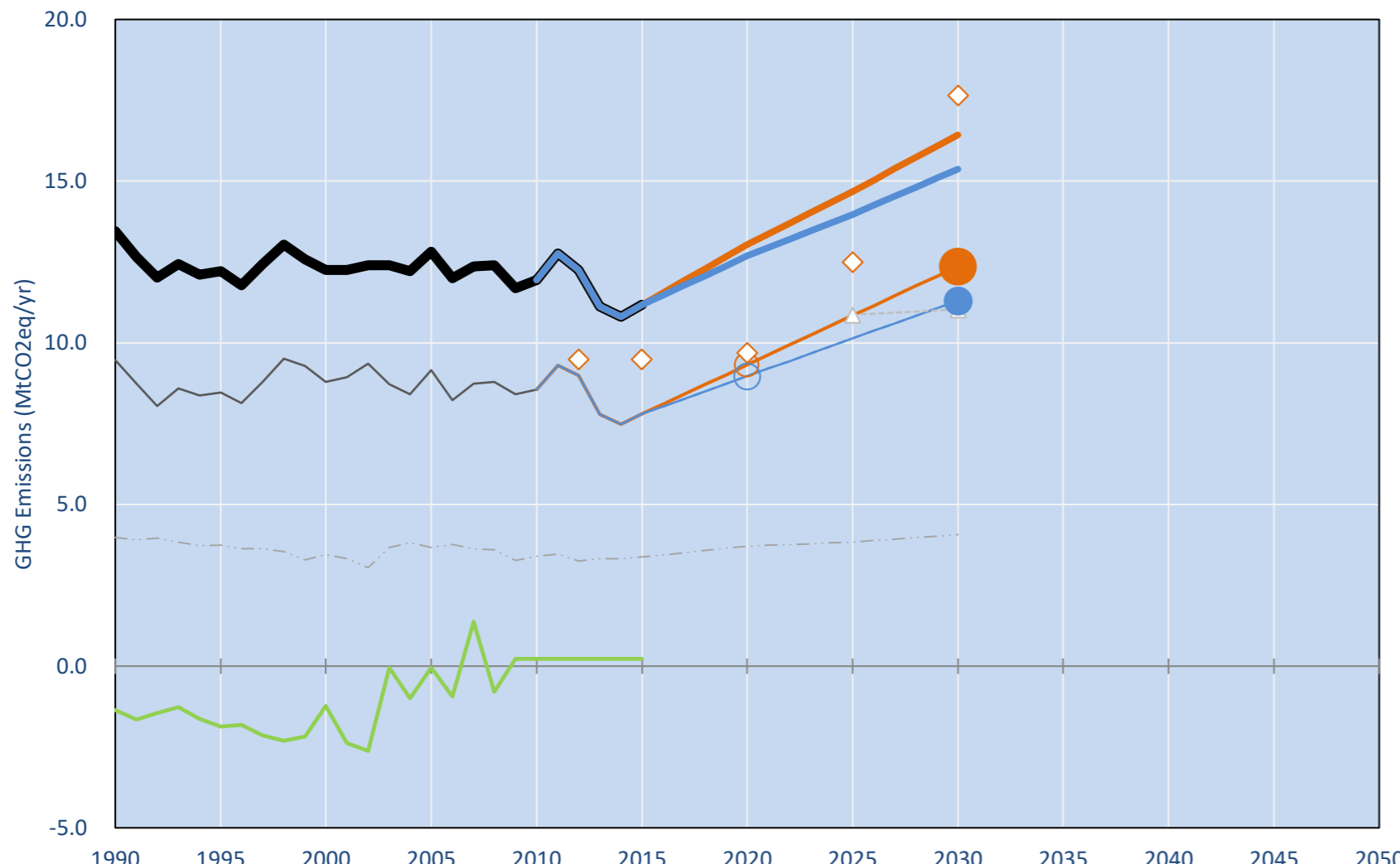
Share of World Emissions excl. LULUCF (Rank): 0.0% #137 0.0% #136 0.0% #136

Per-Capita Emissions (tCO2eq/cap) 5.4t #82 6.9t #63 7.7t #53

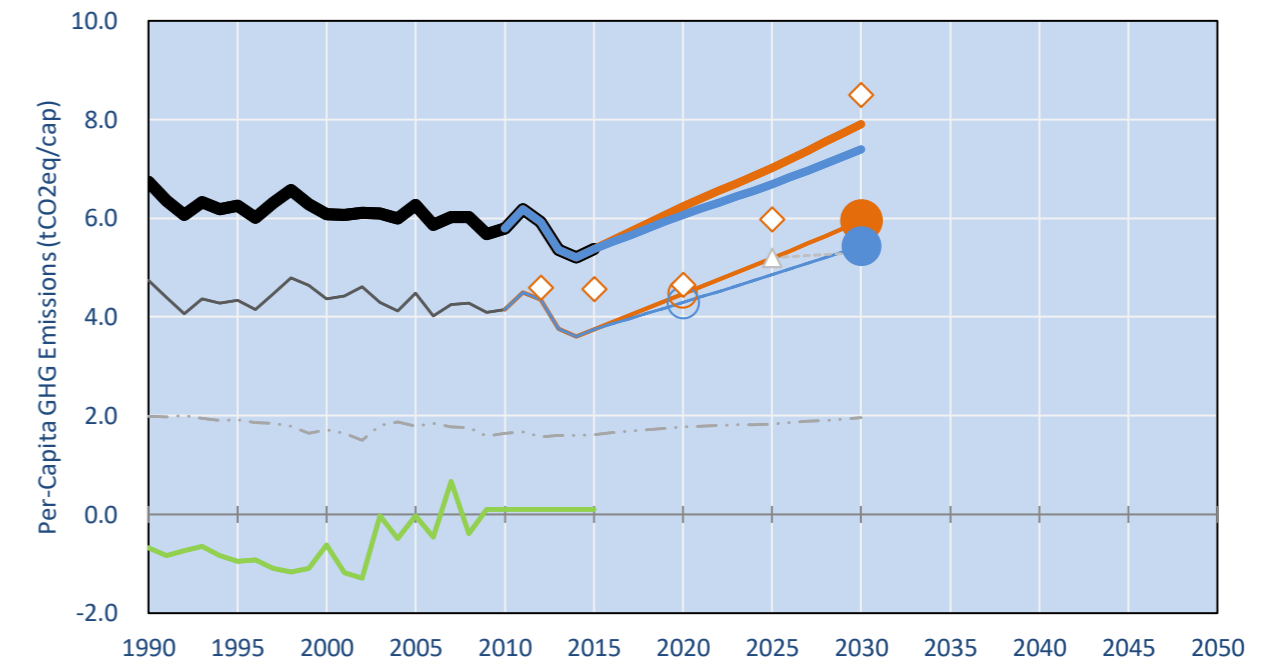
INDC: To reduce CO2 emissions from fossil fuels combustion by 30% or by 36% at a higher level of ambition, by 2030 compared to business as usual (BAU) scenario. (n/a (only CO2))

INDC Submitted: 5/08/2015

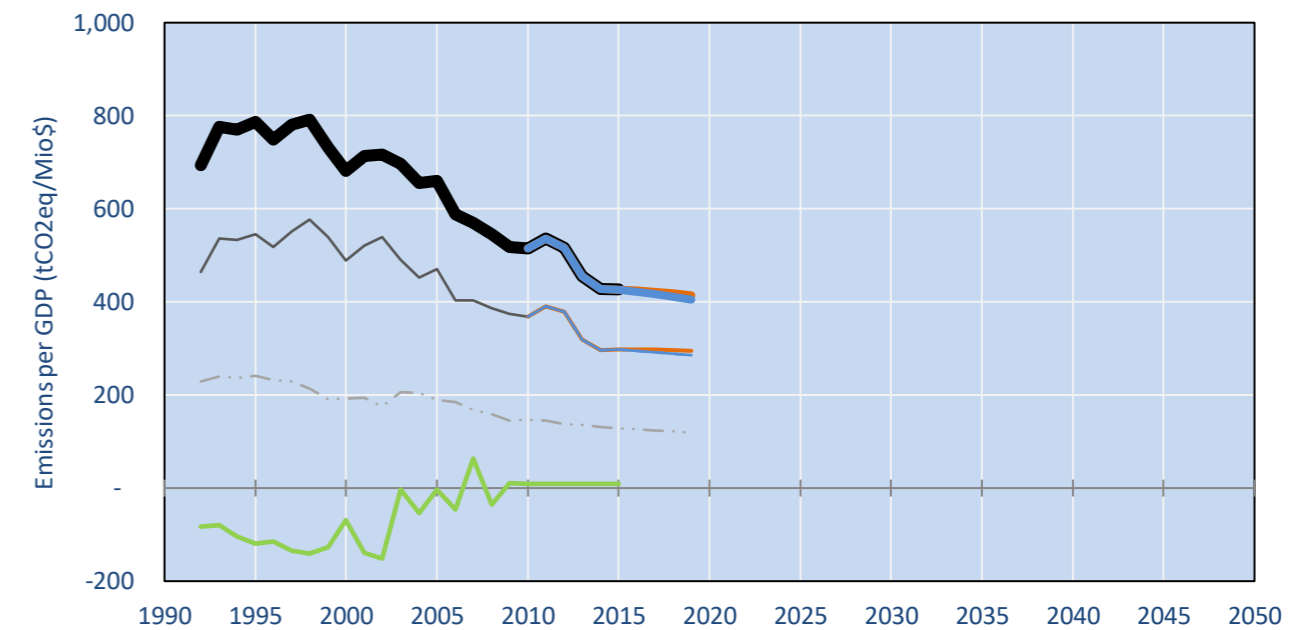
GHG Emissions



Per-Capita Emissions

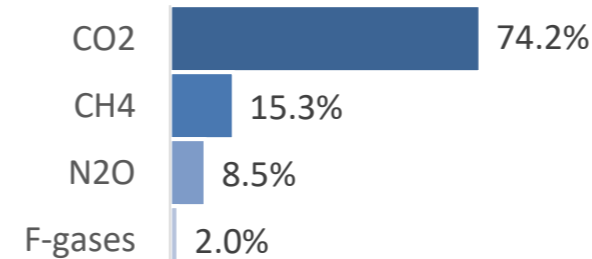


GHG Emissions per GDP

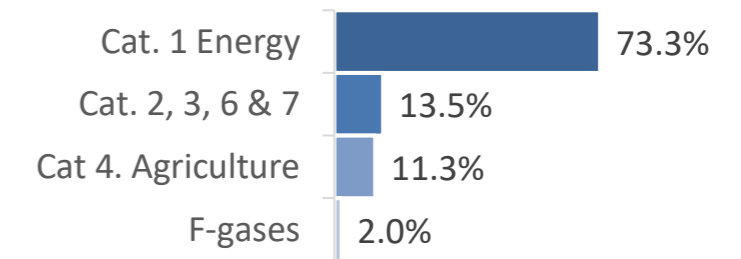


2015 Total GHG Emissions excl. LULUCF

By Gas:



By Sector:



GHG Emissions

	1990	2000	2005	2010	2015	2020		2025		2030	
(MtCO2eq/yr in GWP SAR)						low	high	low	high	low	high
Assumed LULUCF Accounting Credits (-)/Debits (+)	-	-	-	-	-	-	-	-	-	-	-
INDC covered Emissions excl. LULUCF	-	-	-	-	-	-	-	-	-	-	-
INDC covered Emissions incl. LULUCF	9	9	9	9	8	9	9	11	10	12	11
Total GHG excl. LULUCF	13	12	13	12	11	13	13	15	14	16	15
Total GHG incl. LULUCF	12	11	13	12	11	13	13	15	14	17	16

Relative GHG Emissions

	1990	2000	2005	2010	2015	2020		2025		2030	
Total excl. LULUCF						low	high	low	high	low	high
Relative 1990	100%	91%	95%	89%	83%	97%	94%	109%	104%	122%	114%
Relative 2000	110%	100%	105%	97%	91%	106%	104%	120%	114%	134%	125%
Relative 2005	105%	96%	100%	93%	87%	102%	99%	115%	109%	128%	120%
Relative 2010	113%	103%	107%	100%	94%	109%	106%	123%	117%	138%	129%
Relative 2015	120%	110%	115%	107%	100%	117%	114%	131%	125%	147%	138%

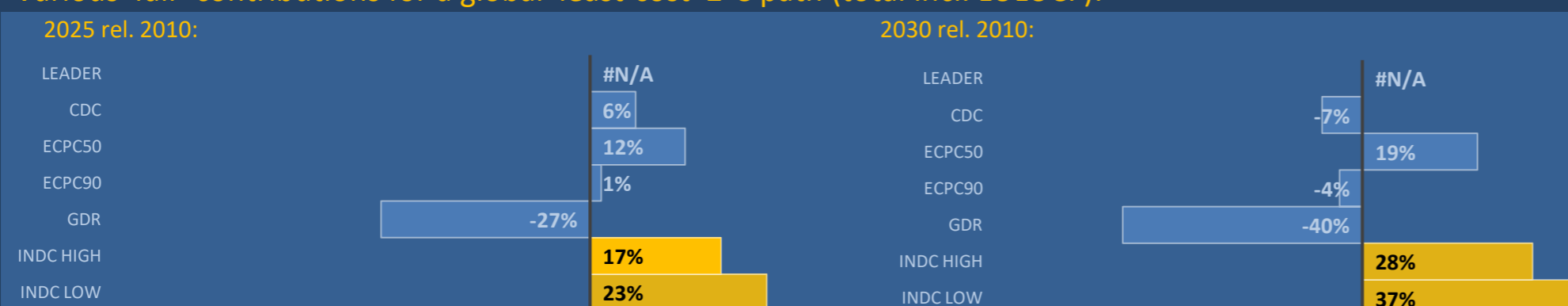
Per-Capita Emissions

	1990	2000	2005	2010	2015	2020		2025		2030	
Total excl. LULUCF						low	high	low	high	low	high
Population (Mio)	2	2	2	2	2	2	2	2	2	2	2
Per-Capita Emissions (tCO2eq/cap)	6.7	6.1	6.3	5.8	5.4	6.2	6.1	7.0	6.7	7.9	7.4
Relative 1990	100%	90%	93%	86%	80%	93%	90%	104%	99%	117%	110%
Relative 2000	111%	100%	103%	95%	88%	103%	100%	115%	110%	130%	121%
Relative 2005	107%	97%	100%	92%	86%	100%	97%	112%	107%	126%	118%
Relative 2010	116%	105%	108%	100%	93%	108%	105%	121%	115%	137%	128%
Relative 2015	125%	113%	117%	108%	100%	116%	113%	131%	124%	147%	138%

Data Sources:

Cat1_CO2	PRIMAPHIST17	Cat5A1_CO2	UNFCCC CRF + Nat. Comms.
Cat2367_CO2	PRIMAPHIST17	Cat5A2_CO2	UNFCCC CRF + Nat. Comms.
Cat4_CO2	PRIMAPHIST17	Cat5LtoNonFL_CO2	UNFCCC CRF + Nat. Comms.
Cat5_CO2	PRIMAPHIST17	Cat5GMCMWMM_C	UNFCCC CRF
Cat1_CH4	PRIMAPHIST17	Cat5A1ForestFires	UNFCCC Cat5 + EDGAR(IPCC Database)
Cat2367_CH4	PRIMAPHIST17	Cat5A1HWP_CO2	UNFCCC CRF + Nat. Comms.
Cat4_CH4	PRIMAPHIST17	Cat5bisA_CO2	UNFCCC CRF + NATCOMM.
Cat5_CH4	PRIMAPHIST17	Cat5bisB_CO2	UNFCCC CRF + NATCOMM.
Cat1_N2O	PRIMAPHIST17	Cat5bisC_CO2	UNFCCC CRF + NATCOMM.
Cat2367_N2O	PRIMAPHIST17	Cat5bisD_CO2	UNFCCC CRF + NATCOMM.
Cat4_N2O	PRIMAPHIST17	Cat5bisE_CO2	UNFCCC CRF + NATCOMM.
Cat5_N2O	PRIMAPHIST17	PRO_WM_Cat5_G	UNFCCC Annex I Reports
Cat0_HFCs	PRIMAPHIST17	Metric	GWP SAR
Cat0_PFCs	PRIMAPHIST17		
Cat0_SF6	PRIMAPHIST17		
Population	UN 2015 Population Projections MEDIUM		
GDP	IMF WEO 2015, PPP adjusted GDP, constant 2009 prices...		
	IPCC WG3 Scenario IMAGE AMPERE2-550-FullTech-HST		
	PRIMAPHIST16 description: www.pik-potsdam.de/primap-live/primap-hist/		
	Gratefully acknowledged in particular: PRIMAP, CAIT, CDIAC, EDGAR, IPCC, IEA, UNEP Gap Team, AMPERE Team and comments on earlier versions, in particular by Giacomo Grassi. Errors and misjudgements are our own. Malte Meinshausen & Ryan Alexander; The "Fiji COP23" Edition was enabled through support via the BMUB project UM14 41 4060		
	This Factsheet is available at www.climatecollege.unimelb.edu.au/indc-factsheets. Check out as well: www.climateactiontracker.org, www.mitigation-contributions.org, cait.wri.org, infographics.pbl.nl/indc, live.primap.org, www.unep.org/climatechange/pledgepipeline, and our twitter feed @ClimateCollege		
		climatecollege.unimelb.edu.au	
		AUSTRALIAN-GERMAN CLIMATE & ENERGY COLLEGE	

Various 'fair' contributions for a global 'least-cost' 2°C path (total incl. LULUCF):



More info on www.mitigation-contributions.org

Shown fair contributions only indicative
"Fair" contributions for a global 'least-cost' 2°C track:
LEADER
CDC Common-but-diff. per-cap. convergence
ECPC50 Eq. cum. Per-capita since 1950
ECPC90 Eq. cum. Per-capita since 1990
GDR Greenhouse Development Rights
#N/A No available data