

Shown are averages for low and high or conditional and unconditional INDCs and their inter-extrapolations
Per-Capita Emissions in 2030 rel. 2015 (excl. LULUCF): **-5%**

Sudan

NDC 2025

NDC 2030

2015 World Rank

2025 World Rank

2030 World Rank

0% rel. BAU of 63.3 Mt

Share of World Emissions excl. LULUCF (Rank):

0.2% #48

0.3% #46

0.3% #46

-6% rel. BAU of 63.3 Mt

Per-Capita Emissions (tCO2eq/cap)

3.1t #124

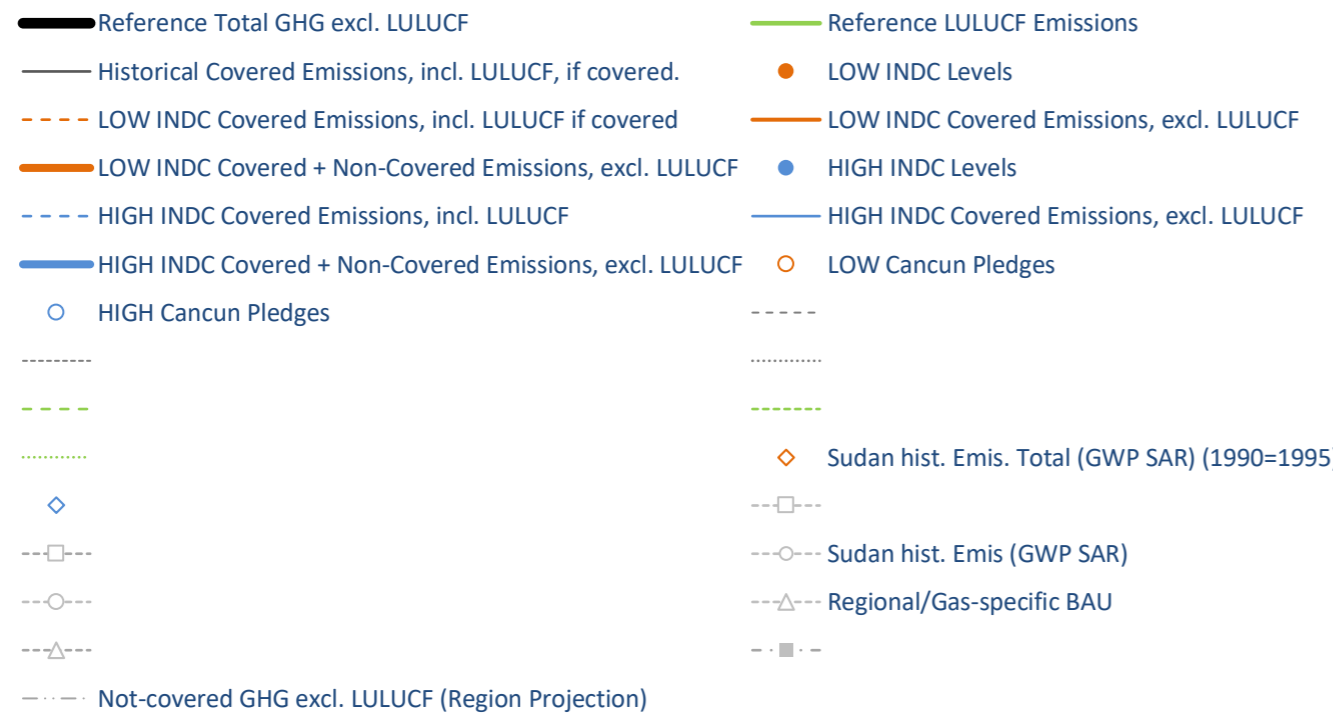
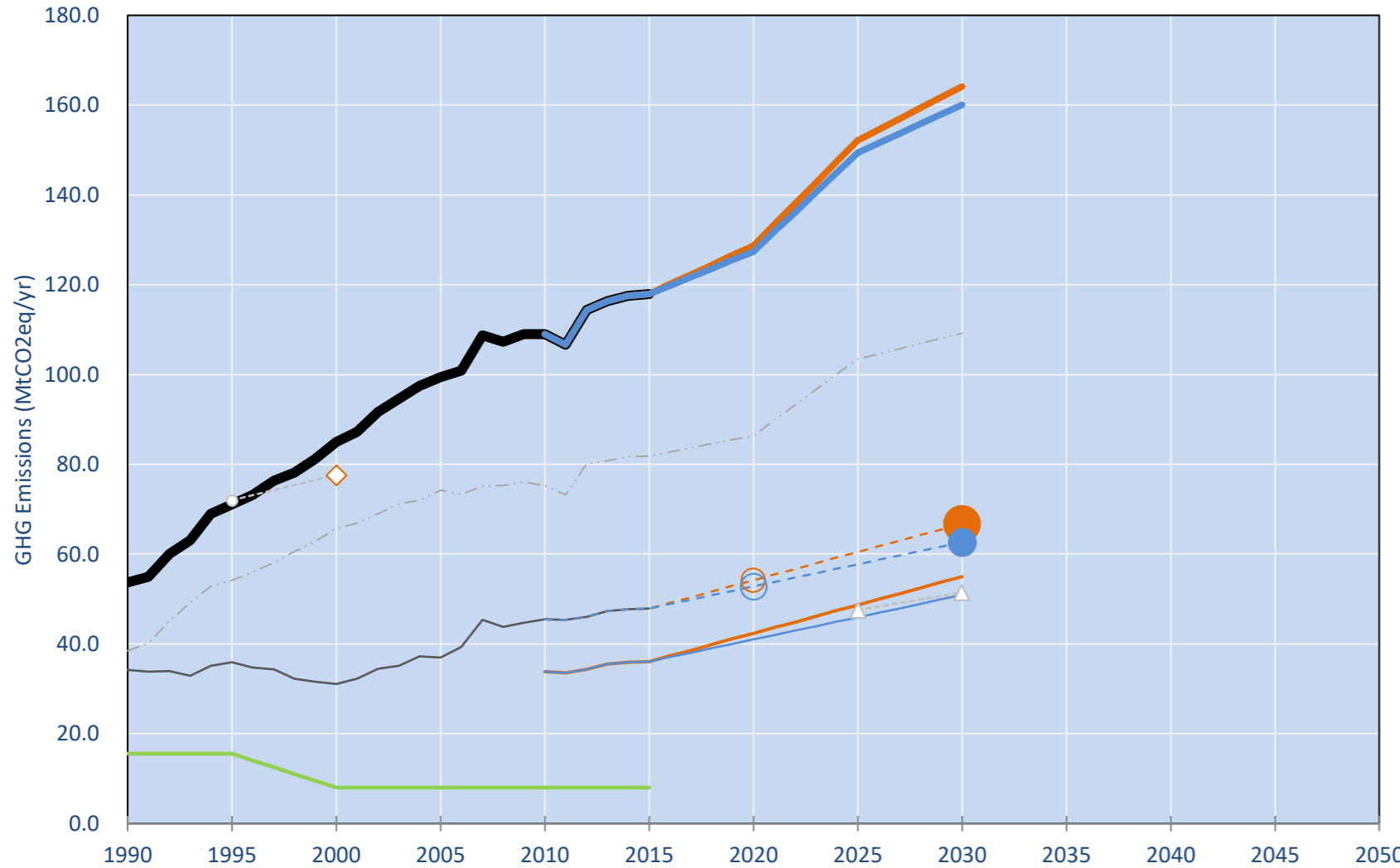
3.1t #125

3t #125

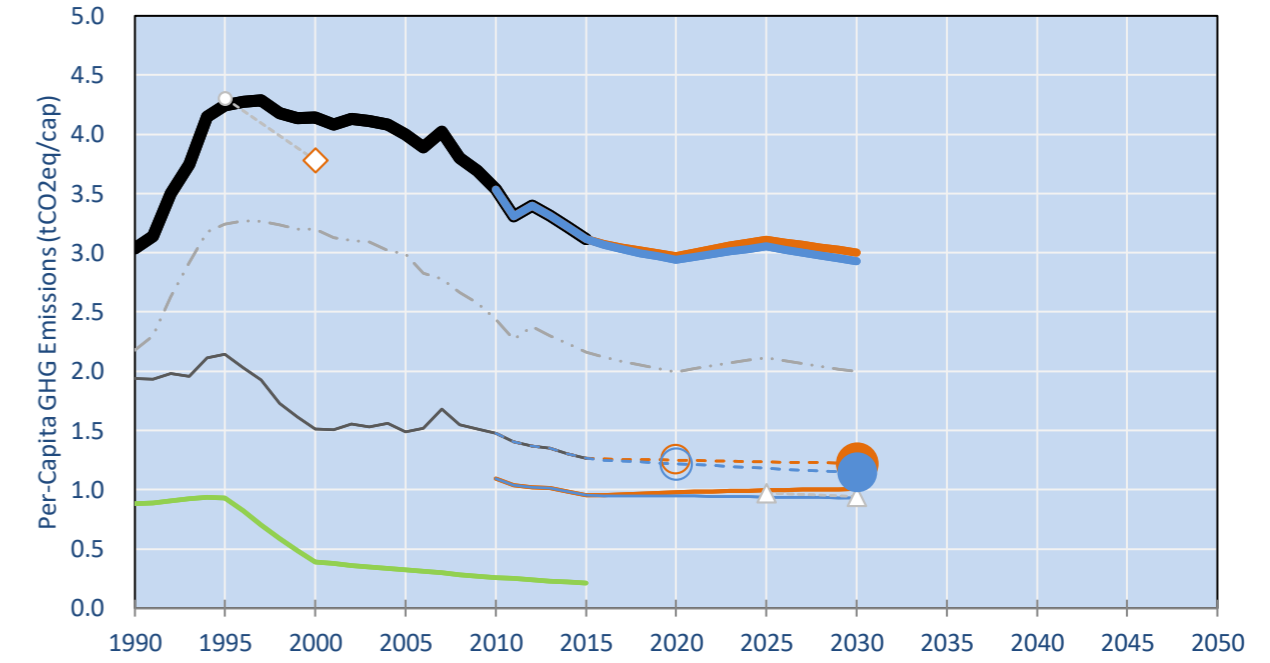
NDC: A number of policies and measures is proposed for energy, forestry and waste sector with timeframe 2025 to 2030. (GWP SAR)

INDC Submitted: 10/11/2015

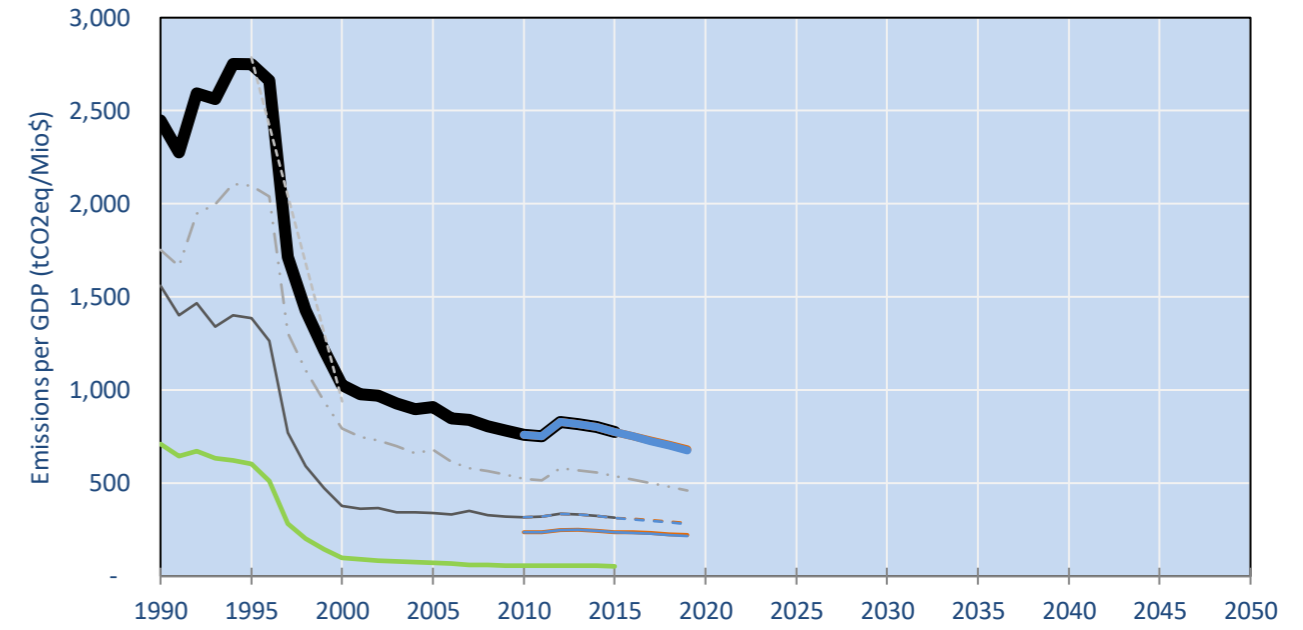
GHG Emissions



Per-Capita Emissions

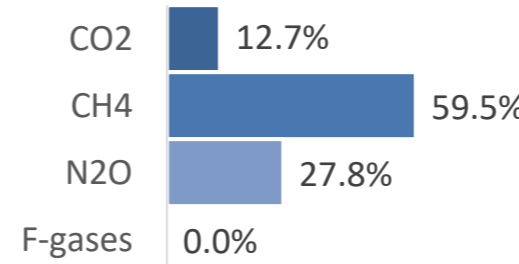


GHG Emissions per GDP

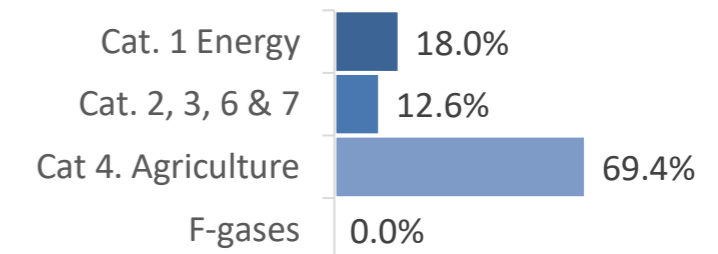


2015 Total GHG Emissions excl. LULUCF

By Gas:



By Sector:



GHG Emissions

	1990	2000	2005	2010	2015	2020	2025	2030	
(MtCO2eq/yr in GWP AR5)						low	high	low	high
Assumed LULUCF Accounting Credits (-)/Debits (+)									
NDC covered LULUCF Emissions									
NDC covered Emissions excl. LULUCF	19	12	12	12	12	12	12	12	12
Total GHG excl. LULUCF	54	85	99	109	118	129	127	152	149
Total GHG incl. LULUCF	69	93	107	117	126	137	135	160	157

Relative GHG Emissions

	1990	2000	2005	2010	2015	2020	2025	2030	
Total excl. LULUCF						low	high	low	high
Relative 1990	100%	158%	185%	203%	220%	240%	237%	283%	278%
Relative 2000	63%	100%	117%	128%	139%	151%	150%	179%	176%
Relative 2005	54%	86%	100%	110%	119%	129%	128%	153%	150%
Relative 2010	49%	78%	91%	100%	108%	118%	117%	140%	137%
Relative 2015	46%	72%	84%	92%	100%	109%	108%	129%	127%

Per-Capita Emissions

	1990	2000	2005	2010	2015	2020	2025	2030	
Total excl. LULUCF						low	high	low	high
Population (Mio)	18	21	25	31	38	43	43	49	49
Per-Capita Emissions (tCO2eq/cap)	3.0	4.1	4.0	3.5	3.1	3.0	2.9	3.1	3.1
Relative 1990	100%	136%	132%	116%	103%	98%	97%	102%	101%
Relative 2000	73%	100%	97%	85%	75%	72%	71%	75%	74%
Relative 2005	76%	104%	100%	88%	78%	74%	73%	78%	76%
Relative 2010	86%	117%	113%	100%	88%	84%	83%	88%	86%
Relative 2015	98%	133%	128%	113%	100%	95%	94%	100%	98%

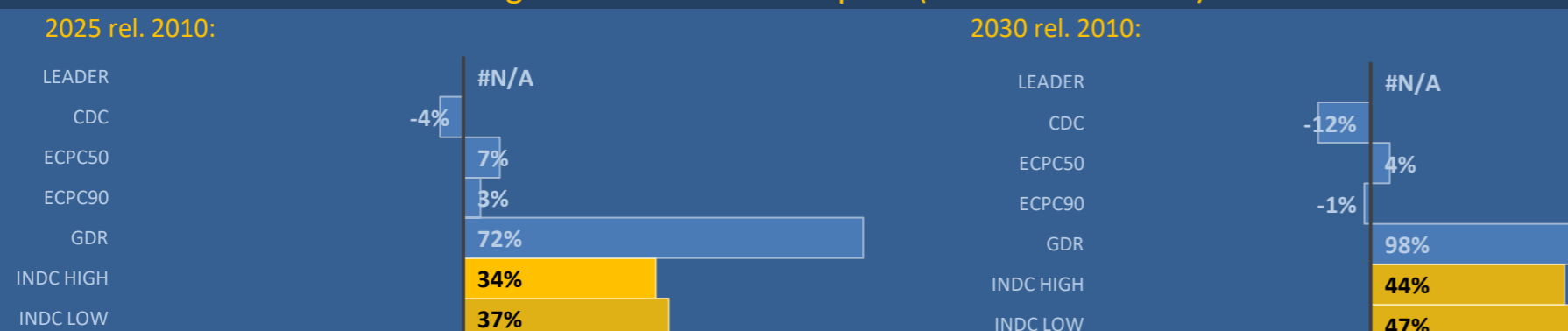
Data Sources:

Cat1_CO2	PRIMAPHIST17	Cat5A1_CO2	UNFCCC CRF + Nat. Comms.
Cat2367_CO2	PRIMAPHIST17	Cat5A2_CO2	UNFCCC CRF + Nat. Comms.
Cat4_CO2	PRIMAPHIST17	Cat5LtoNonFL_CO2	UNFCCC CRF + Nat. Comms.
Cat5_CO2	PRIMAPHIST17	Cat5GMCMWMM_C	UNFCCC CRF
Cat1_CH4	PRIMAPHIST17	Cat5A1ForestFires	UNFCCC Cat5 + EDGAR(IPCC Database)
Cat2367_CH4	PRIMAPHIST17	Cat5A1HWP_CO2	UNFCCC CRF + Nat. Comms.
Cat4_CH4	PRIMAPHIST17	Cat5bisA_CO2	UNFCCC CRF + NATCOMM.
Cat5_CH4	PRIMAPHIST17	Cat5bisB_CO2	UNFCCC CRF + NATCOMM.
Cat1_N2O	PRIMAPHIST17	Cat5bisC_CO2	UNFCCC CRF + NATCOMM.
Cat2367_N2O	PRIMAPHIST17	Cat5bisD_CO2	UNFCCC CRF + NATCOMM.
Cat4_N2O	PRIMAPHIST17	Cat5bisE_CO2	UNFCCC CRF + NATCOMM.
Cat5_N2O	PRIMAPHIST17	PRO_WM_Cat5_G	UNFCCC Annex I Reports
Cat0_HFCs	PRIMAPHIST17	Metric	GWP AR5
Cat0_PFCs	PRIMAPHIST17		
Cat0_SF6	PRIMAPHIST17		
Population	COUNTRY-SPECIFIC USER DATA		
GDP	IMF WEO 2015, PPP adjusted GDP, constant 2009 prices...		
IPCC WG3 Scenario	IMAGE AMPERE2-550-FullTech-HST		
PRIMAPHIST16 description:	www.pik-potsdam.de/primap-live/primap-hist/		
Gratefully acknowledged in particular:	PRIMAP, CAIT, CDIAC, EDGAR, IPCC, IEA, UNEP Gap Team, AMPERE Team and comments on earlier versions, in particular by Giacomo Grassi. Errors and misjudgements are our own. Malte Meinshausen & Ryan Alexander; The "Fiji COP23" Edition was enabled through support via the BMUB project UM14 41 4060		
This Factsheet is available at	www.climatecollege.unimelb.edu.au/indc-factsheets. Check out as well: www.climateactiontracker.org, www.mitigation-contributions.org, cait.wri.org, infographics.pbl.nl/indc, live.primap.org, www.unep.org/climatechange/pledgepipeline, and our twitter feed @ClimateCollege		

climatecollege.unimelb.edu.au



Various 'fair' contributions for a global 'least-cost' 2°C path (total incl. LULUCF):



Shown fair contributions only indicative

"Fair" contributions for a global 'least-cost' 2°C track:

LEADER	Leader
CDC	Common-but-diff. per-cap. convergence
ECPC50	Eq. cum. Per-capita since 1950
ECPC90	Eq. cum. Per-capita since 1990
GDR	Greenhouse Development Rights
INDC LOW	#N/A No available data