

Seychelles

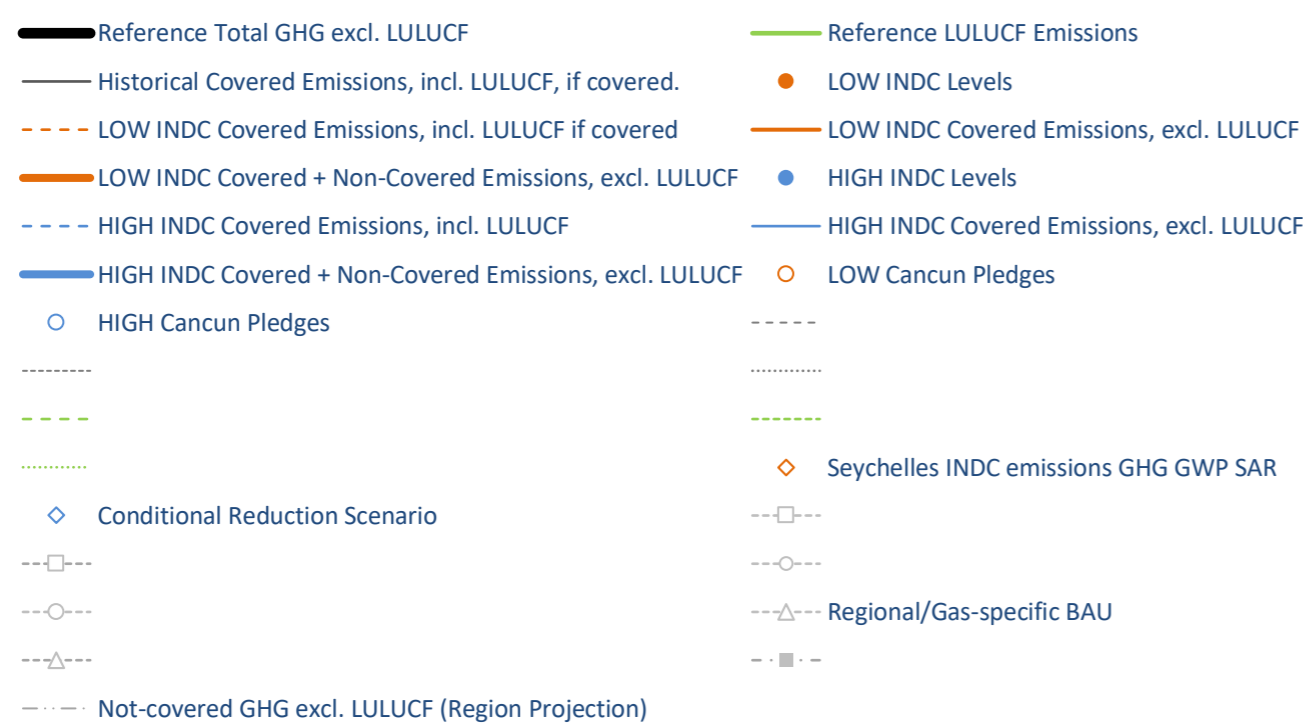
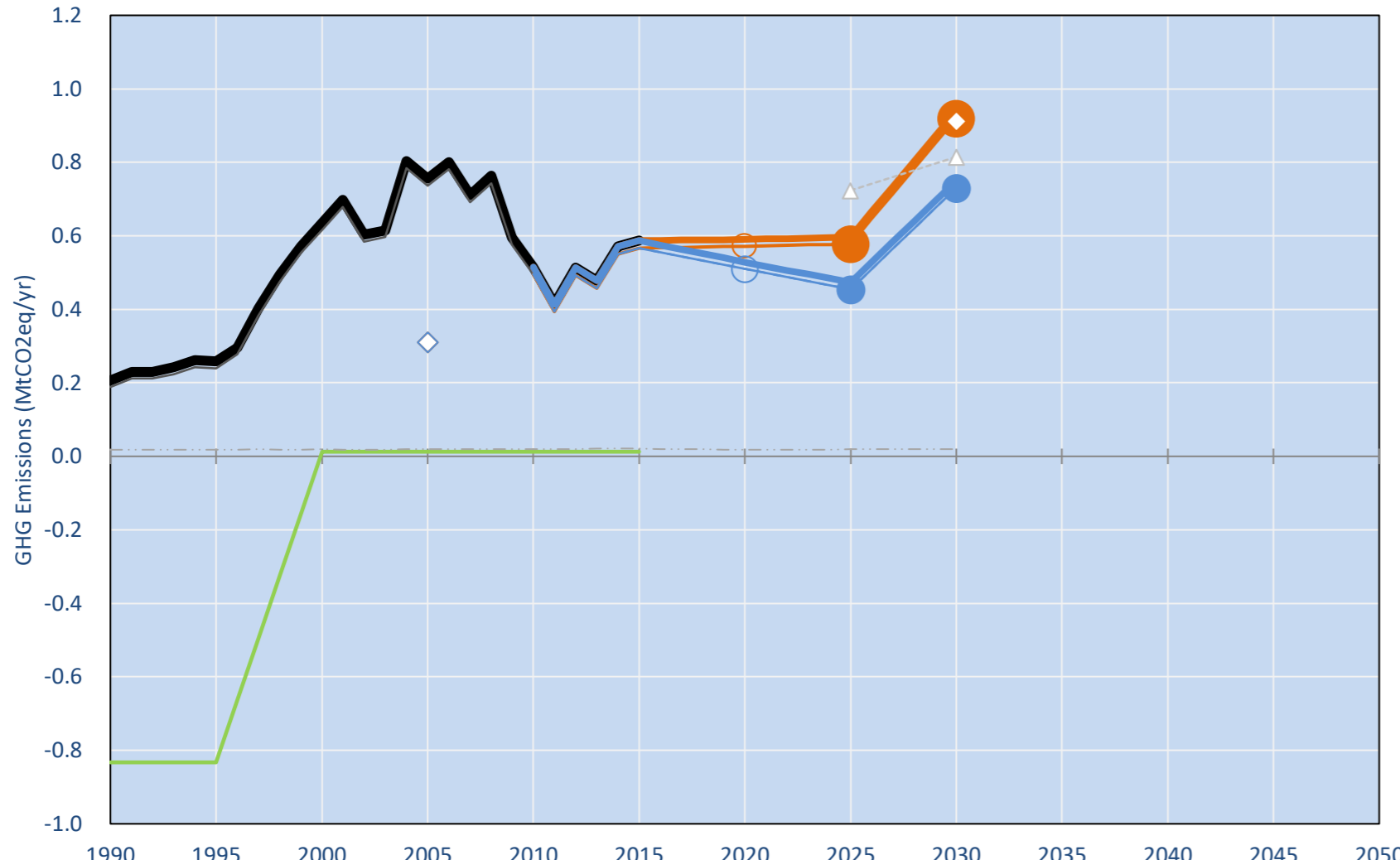
Per-Capita Emissions in 2030 rel. 2015 (excl. LULUCF): **+37%**

NDC 2025	NDC 2030	2015 World Rank	2025 World Rank	2030 World Rank
0% -21% rel. BAU of 0.6 Mt	0% rel. BAU of 0.9 Mt	0.0% #177	0.0% #178	0.0% #175
	-21% rel. BAU of 0.9 Mt	6.1t #68	5.3t #88	8.4t #45

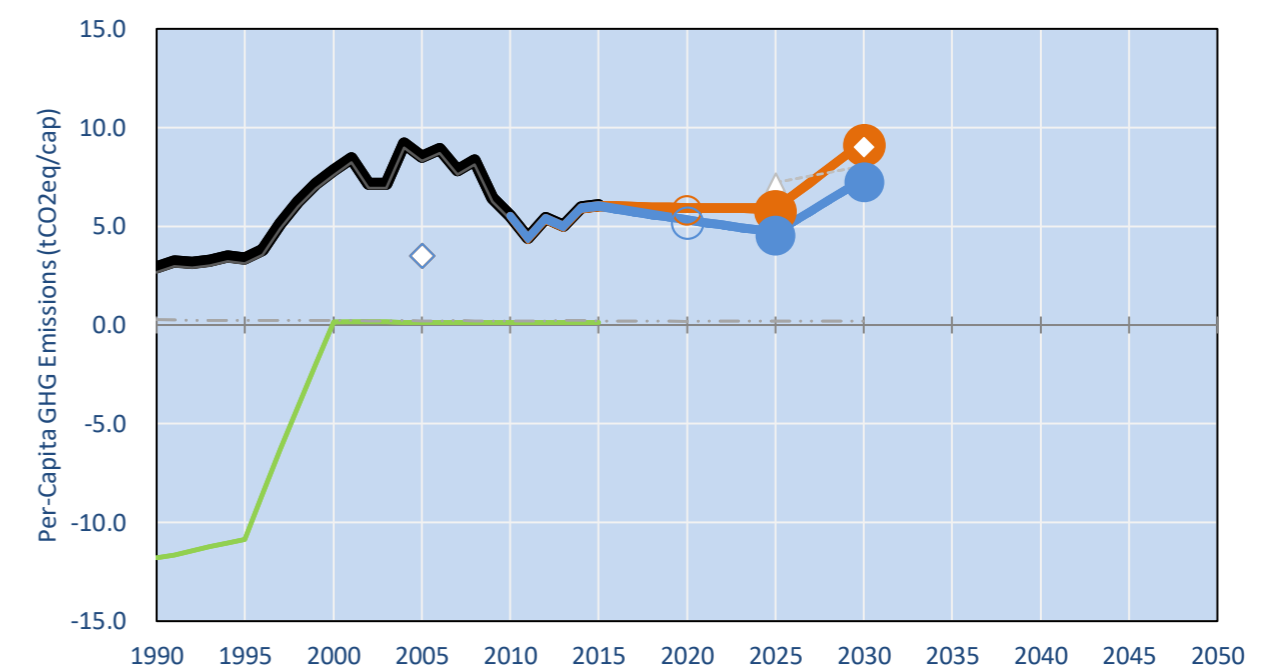
NDC: Economy-wide GHG emission reduction by 122.5 ktCO₂eq (21.4%) in 2025 and approximately 188 ktCO₂eq (29%) in 2030 relative to BAU. (GWP SAR)

INDC Submitted: 25/09/2015

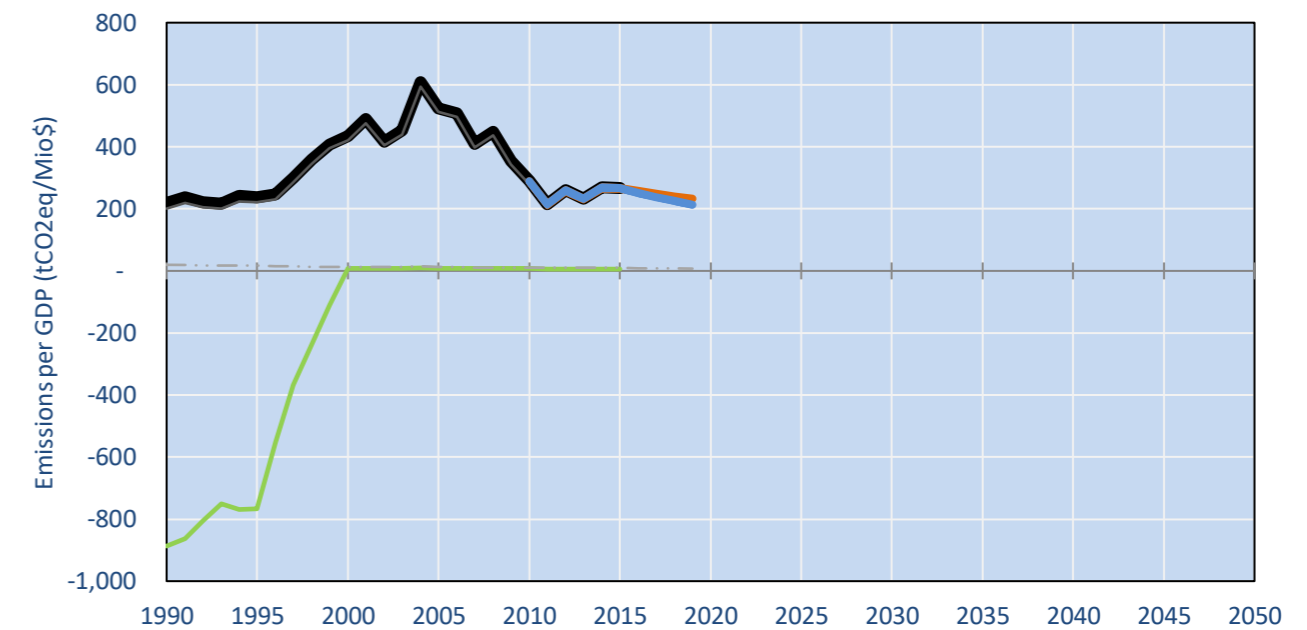
GHG Emissions



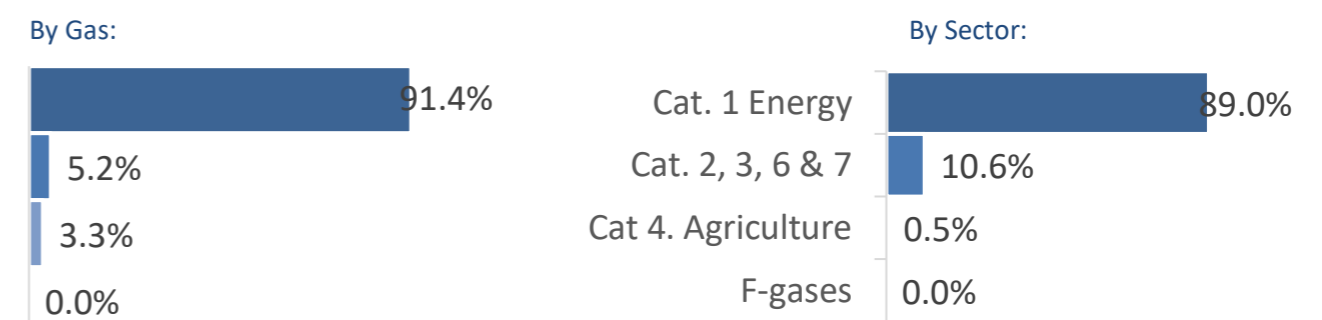
Per-Capita Emissions



GHG Emissions per GDP



2015 Total GHG Emissions excl. LULUCF



GHG Emissions

	1990	2000	2005	2010	2015	2020	2025	2030	
(MtCO ₂ eq/yr in GWP AR5)						low	high	low	high
Assumed LULUCF Accounting Credits (-)/Debits (+)									
NDC covered LULUCF Emissions									
NDC covered Emissions excl. LULUCF	0	1	1	0	1	1	1	0	1
Total GHG excl. LULUCF	0	1	1	1	1	1	1	0	1
Total GHG incl. LULUCF	1	1	1	1	1	1	1	0	1

Relative GHG Emissions

	1990	2000	2005	2010	2015	2020	2025	2030	
Total excl. LULUCF						low	high	low	high
Relative 1990	100%	308%	366%	250%	284%	286%	256%	289%	455%
Relative 2000	33%	100%	119%	81%	92%	93%	83%	94%	148%
Relative 2005	27%	84%	100%	68%	78%	78%	70%	79%	63%
Relative 2010	40%	123%	147%	100%	114%	115%	103%	116%	92%
Relative 2015	35%	108%	129%	88%	100%	101%	90%	102%	81%

Per-Capita Emissions

	1990	2000	2005	2010	2015	2020	2025	2030	
Total excl. LULUCF						low	high	low	high
Population (Mio)	0	0	0	0	0	0	0	0	0
Per-Capita Emissions (tCO ₂ eq/cap)	2.9	7.8	8.5	5.5	6.1	6.0	5.3	5.9	4.7
Relative 1990	100%	268%	291%	189%	208%	204%	183%	203%	161%
Relative 2000	37%	100%	109%	71%	78%	76%	68%	76%	60%
Relative 2005	34%	92%	100%	65%	71%	70%	63%	70%	55%
Relative 2010	53%	141%	154%	100%	110%	108%	97%	107%	85%
Relative 2015	48%	129%	140%	91%	100%	98%	88%	98%	78%

Data Sources:

Cat1_CO2	PRIMAPHIST17	Cat5A1_CO2	UNFCCC CRF + Nat. Comms.
Cat2367_CO2	PRIMAPHIST17	Cat5A2_CO2	UNFCCC CRF + Nat. Comms.
Cat4_CO2	PRIMAPHIST17	Cat5LtoNonFL_CO2	UNFCCC CRF + Nat. Comms.
Cat5_CO2	PRIMAPHIST17	Cat5GMCCMWM_C	UNFCCC CRF
Cat1_CH4	PRIMAPHIST17	Cat5A1ForestFires	UNFCCC CRF + EDGAR(IPCC Database)
Cat2367_CH4	PRIMAPHIST17	Cat5A1HWP_CO2	UNFCCC CRF + Nat. Comms.
Cat4_CH4	PRIMAPHIST17	Cat5bisA_CO2	UNFCCC CRF + NATCOMM.
Cat5_CH4	PRIMAPHIST17	Cat5bisB_CO2	UNFCCC CRF + NATCOMM.
Cat1_N2O	PRIMAPHIST17	Cat5bisC_CO2	UNFCCC CRF + NATCOMM.
Cat2367_N2O	PRIMAPHIST17	Cat5bisD_CO2	UNFCCC CRF + NATCOMM.
Cat4_N2O	PRIMAPHIST17	Cat5bisE_CO2	UNFCCC CRF + NATCOMM.
Cat5_N2O	PRIMAPHIST17	PRO_WM_Cat5_G	UNFCCC Annex I Reports
Cat0_HFCs	PRIMAPHIST17	Metric	GWP AR5
Cat0_PFCs	PRIMAPHIST17		
Cat0_SF6	PRIMAPHIST17		
Population	UN 2015 Population Projections MEDIUM		
GDP	IMF WEO 2015, PPP adjusted GDP, constant 2009 prices...		
IPCC WG3 Scenario	IMAGE AMPERE2-550-FullTech-HST		

Meinshausen, Alexander et al., www.climatecollege.unimelb.edu.au/indc-factsheets, The University of Melbourne



Various 'fair' contributions for a global 'least-cost' 2°C path (total incl. LULUCF):

2025 rel. 2010:	2030 rel. 2010:
LEADER	#N/A
CDC	#N/A
ECPC50	#N/A
ECPC90	#N/A
GDR	#N/A
INDC HIGH	-8%
INDC LOW	15%

More info on www.mitigation-contributions.org

"Fair" contributions for a global 'least-cost' 2°C track:	
LEADER	Leader
CDC	Common-but-diff. per-cap. convergence
ECPC50	Eq. cum. Per-capita since 1950
ECPC90	Eq. cum. Per-capita since 1990
GDR	Greenhouse Development Rights
#N/A	No available data