

# Saudi Arabia

Per-Capita Emissions in 2030 rel. 2015 (excl. LULUCF): **+5%**

NDC 2025

NDC 2030

2015 World Rank

2025 World Rank

2030 World Rank

0% -14% rel. BAU of 712.4 Mt

Share of World Emissions excl. LULUCF (Rank):

1.3% #15

1.4% #12

1.5% #12

Per-Capita Emissions (tCO<sub>2</sub>eq/cap)

19.5t #10

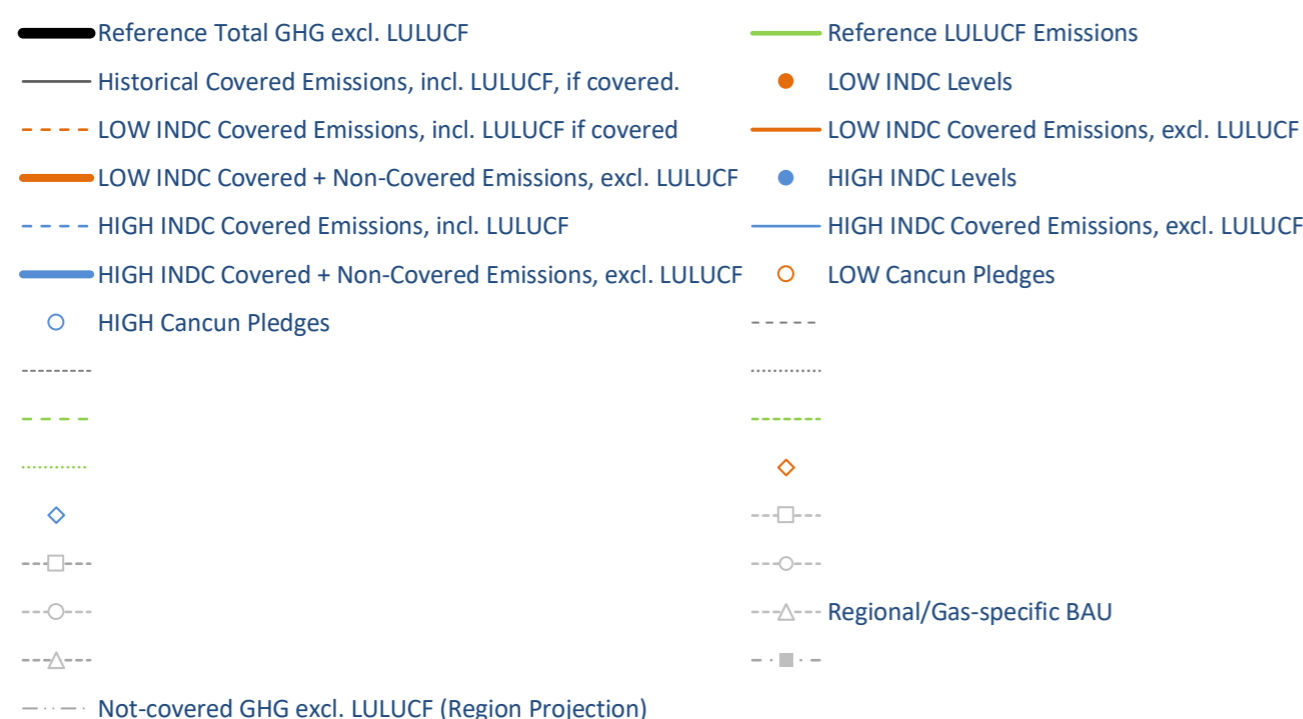
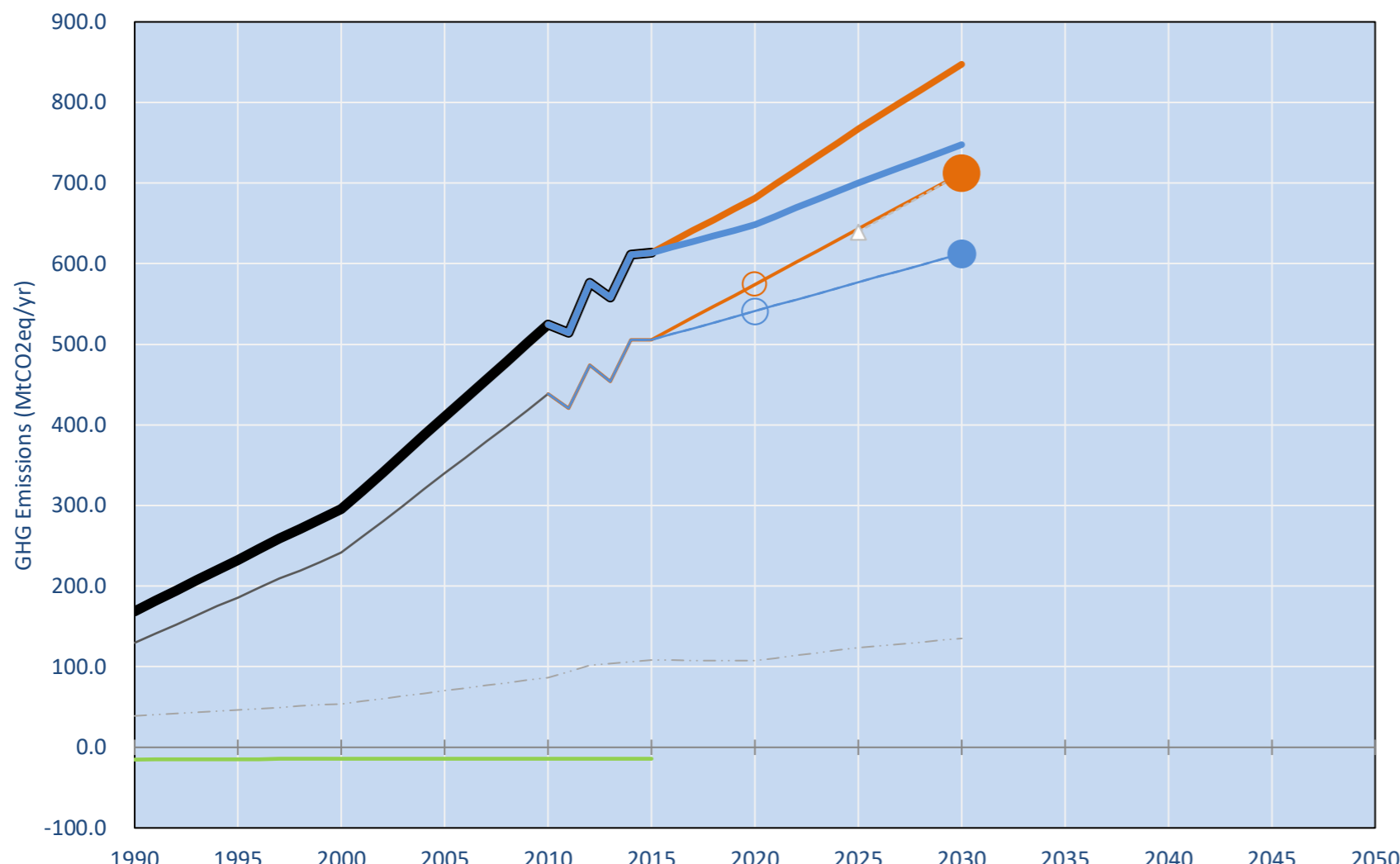
19.9t #9

20.4t #10

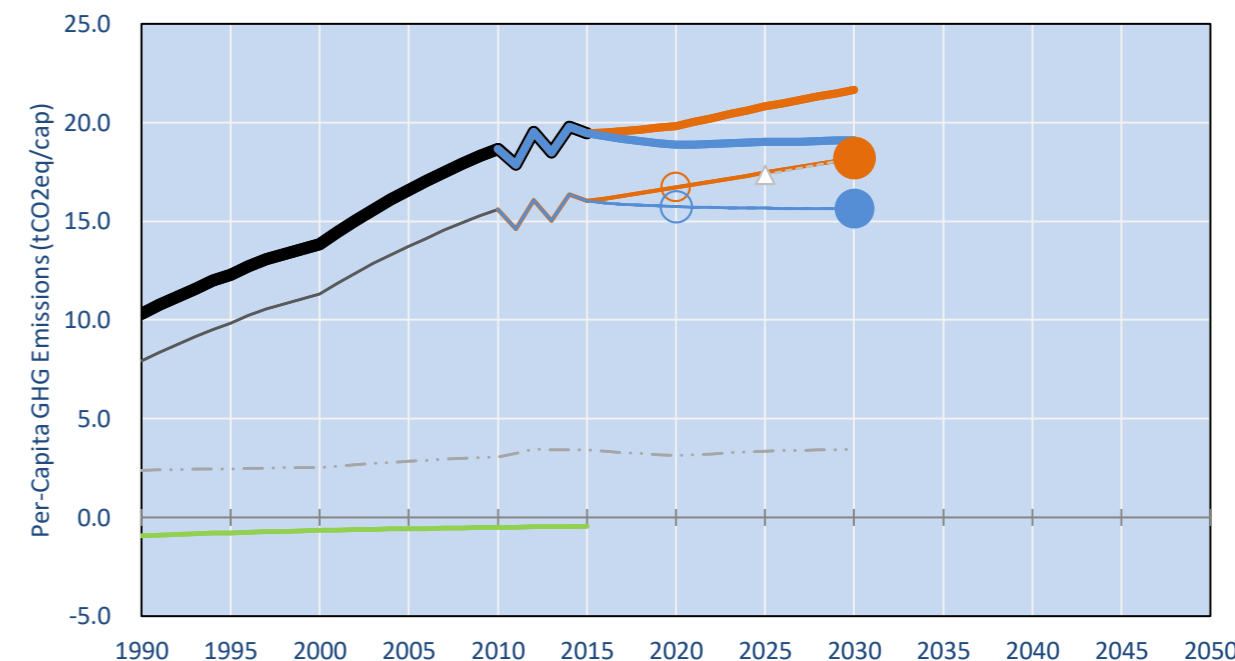
NDC: Measures to reduce emissions by up to 130 MtCO<sub>2</sub>eq by 2030 in case the continued economic growth scenario materializes. (GWP unclear)

INDC Submitted: 10/11/2015

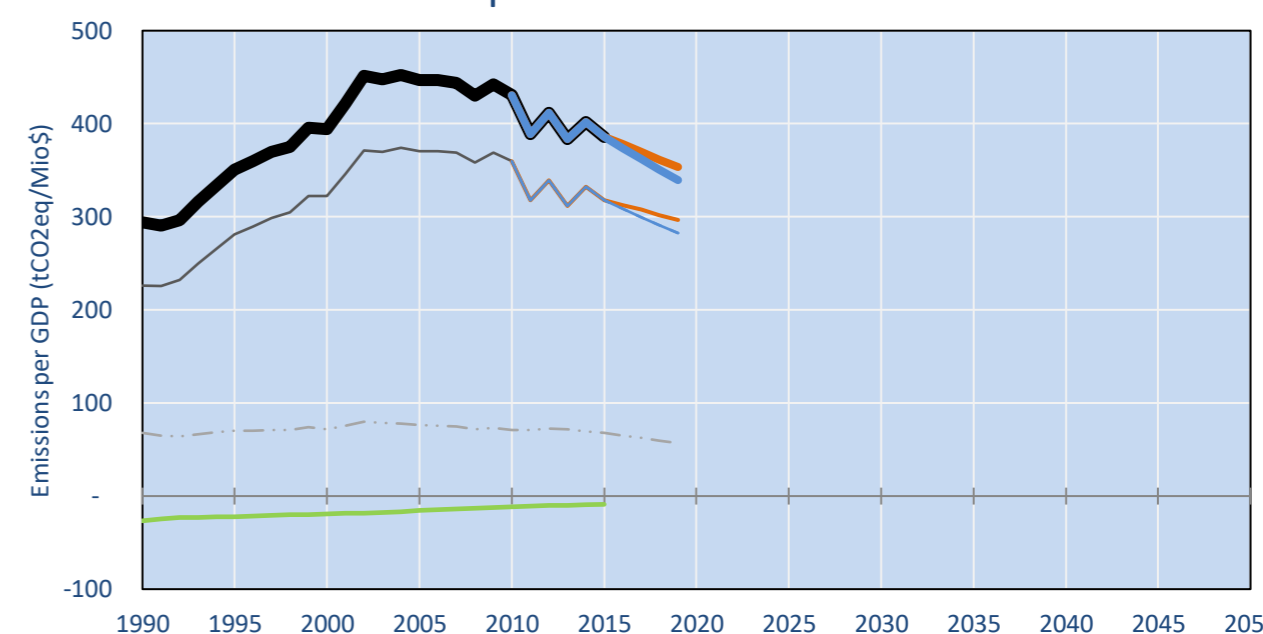
## GHG Emissions



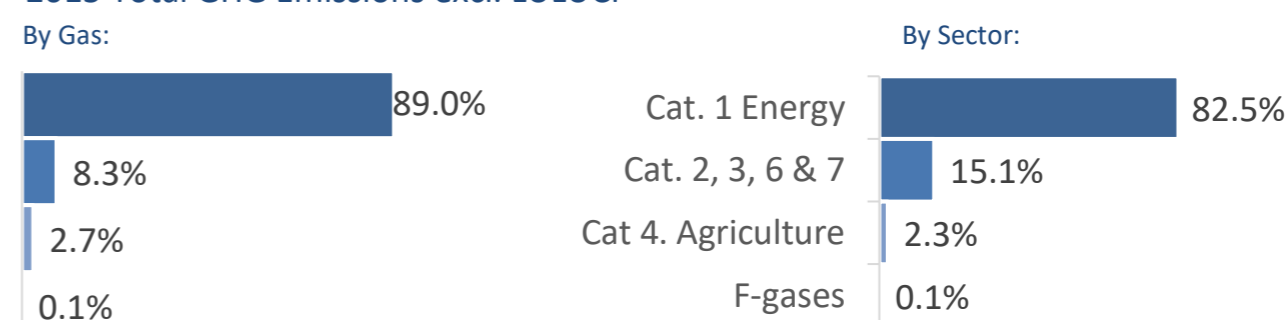
## Per-Capita Emissions



## GHG Emissions per GDP



## 2015 Total GHG Emissions excl. LULUCF



## GHG Emissions

	1990	2000	2005	2010	2015	2020		2025		2030	
(MtCO <sub>2</sub> eq/yr in GWP SAR)						low	high	low	high	low	high
Assumed LULUCF Accounting Credits (-)/Debits (+)	-	-	-	-	-	-	-	-	-	-	-
NDC covered LULUCF Emissions	-	-	-	-	-	-	-	-	-	-	-
NDC covered Emissions excl. LULUCF	130	242	340	438	505	574	541	643	577	712	613
Total GHG excl. LULUCF	169	296	410	525	614	682	648	767	701	847	748
Total GHG incl. LULUCF	153	282	396	511	600	667	634	753	686	833	734

## Relative GHG Emissions

	1990	2000	2005	2010	2015	2020		2025		2030	
Total excl. LULUCF						low	high	low	high	low	high
Relative 1990	100%	175%	243%	311%	364%	404%	384%	455%	415%	502%	443%
Relative 2000	57%	100%	139%	177%	207%	230%	219%	259%	237%	286%	253%
Relative 2005	41%	72%	100%	128%	150%	166%	158%	187%	171%	207%	182%
Relative 2010	32%	56%	78%	100%	117%	130%	124%	146%	134%	161%	142%
Relative 2015	27%	48%	67%	85%	100%	111%	106%	125%	114%	138%	122%

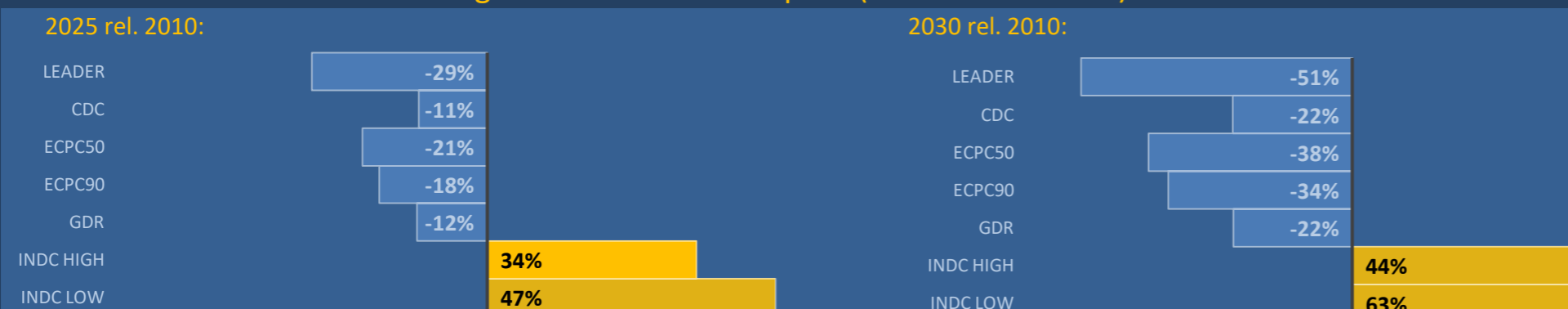
## Per-Capita Emissions

	1990	2000	2005	2010	2015	2020		2025		2030	
Total excl. LULUCF						low	high	low	high	low	high
Population (Mio)	16	21	25	28	32	34	34	37	37	39	39
Per-Capita Emissions (tCO <sub>2</sub> eq/cap)	10.3	13.8	16.6	18.7	19.5	19.8	18.9	20.8	19.0	21.7	19.1
Relative 1990	100%	134%	161%	181%	189%	192%	183%	202%	184%	210%	185%
Relative 2000	75%	100%	120%	135%	141%	143%	136%	150%	137%	157%	138%
Relative 2005	62%	83%	100%	113%	117%	120%	114%	126%	115%	131%	115%
Relative 2010	55%	74%	89%	100%	104%	106%	101%	111%	102%	116%	102%
Relative 2015	53%	71%	85%	96%	100%	102%	97%	107%	98%	111%	98%

## Data Sources:

Cat1\_CO2 PRIMAPHIST17  
Cat2367\_CO2 PRIMAPHIST17  
Cat4\_CO2 PRIMAPHIST17  
Cat5\_CO2 PRIMAPHIST17  
Cat1\_CH4 PRIMAPHIST17  
Cat2367\_CH4 PRIMAPHIST17  
Cat4\_CH4 PRIMAPHIST17  
Cat5\_CH4 PRIMAPHIST17  
Cat1\_N2O PRIMAPHIST17  
Cat2367\_N2O PRIMAPHIST17  
Cat4\_N2O PRIMAPHIST17  
Cat5\_N2O PRIMAPHIST17  
Cat0\_HFCs PRIMAPHIST17  
Cat0\_PFCs PRIMAPHIST17  
Cat0\_SF6 PRIMAPHIST17  
Population UN 2015 Population Projections MEDIUM  
GDP IMF WEO 2015, PPP adjusted GDP, constant 2009 prices...  
IPCC WG3 Scenario IMAGE | AMPERE2-550-FullTech-HST  
PRIMAPHIST16 description: www.pik-potsdam.de/primap-live/primap-hist/  
Gratefully acknowledged in particular: PRIMAP, CAIT, CDIAC, EDGAR, IPCC, IEA, UNEP GAP Team, AMPERE Team and comments on earlier versions, in particular by Giacomo Grassi. Errors and misjudgements are our own. Malte Meinshausen & Ryan Alexander; The "Fiji COP23" Edition was enabled through support via the BMUB project UM14 41 4060  
This Factsheet is available at www.climatecollege.unimelb.edu.au/indc-factsheets. Check out as well: www.climateactiontracker.org, www.mitigation-contributions.org, cait.wri.org, infographics.pbl.nl/indc, live.primap.org, www.unep.org/climatechange/pledgepipeline, and our twitter feed @ClimateCollege  
climatecollege.unimelb.edu.au  
AUSTRALIAN-GERMAN CLIMATE & ENERGY COLLEGE

## Various 'fair' contributions for a global 'least-cost' 2°C path (total incl. LULUCF):



## More info on www.mitigation-contributions.org

"Fair" contributions for a global 'least-cost' 2°C track:  
LEADER Leader  
CDC Common-but-diff. per-cap. convergence  
ECPC50 Eq. cum. Per-capita since 1950  
ECPC90 Eq. cum. Per-capita since 1990  
GDR Greenhouse Development Rights  
#N/A No available data