

Paris Agreement ratified on: 03/11/2016

# Saudi Arabia

Per-Capita Emissions in 2030 rel. 2015 (excl. LULUCF): **+4%**

NDC 2025

NDC 2030

2015 World Rank

2025 World Rank

2030 World Rank

0% -14% rel. BAU of 720.7 Mt

Share of World Emissions excl. LULUCF (Rank):

1.3% #15

1.4% #12

1.5% #12

Per-Capita Emissions (tCO<sub>2</sub>eq/cap)

19.9t #10

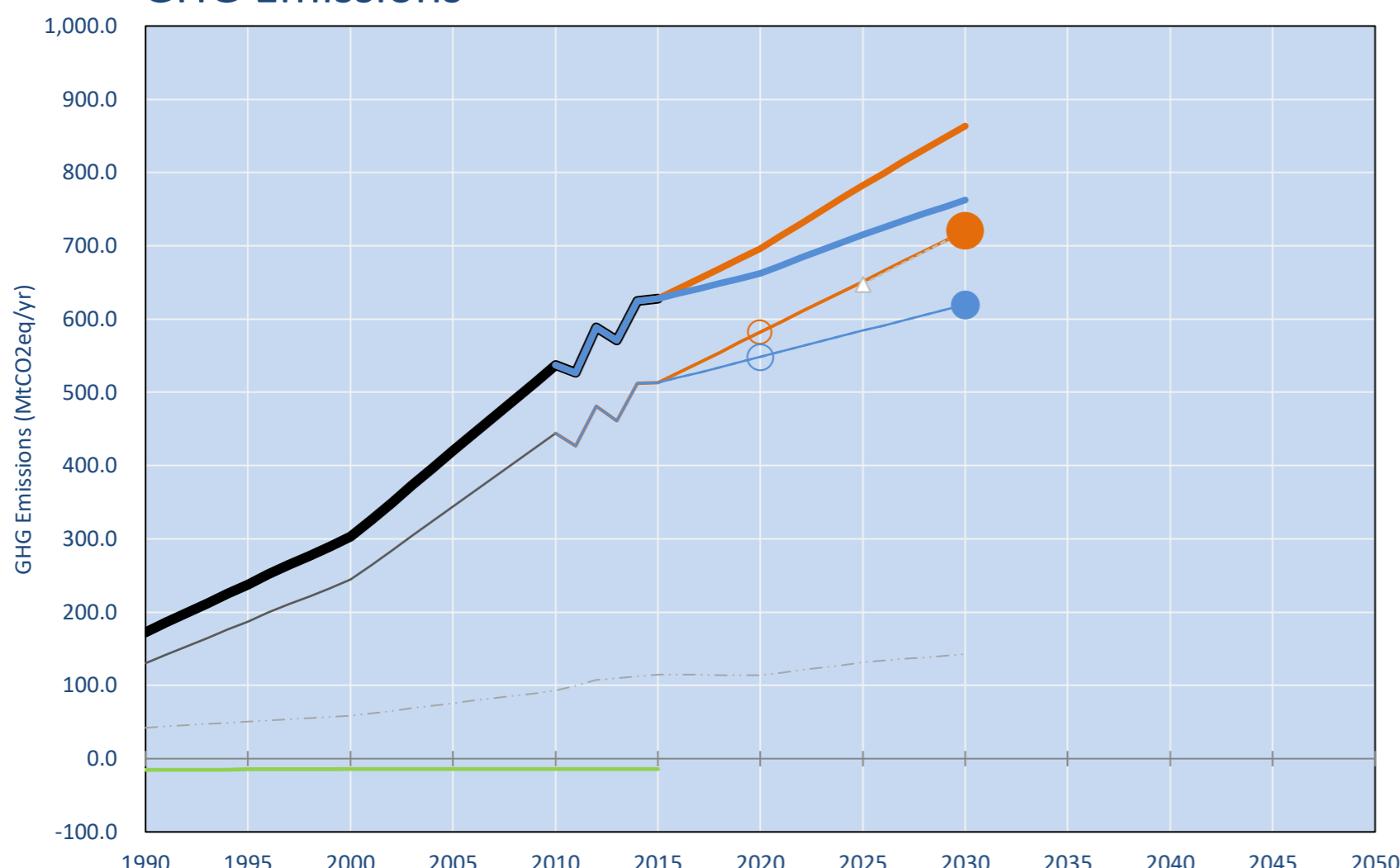
20.3t #9

20.8t #9

NDC: Measures to reduce emissions by up to 130 MtCO<sub>2</sub>eq by 2030 in case the continued economic growth scenario materializes. (GWP unclear)

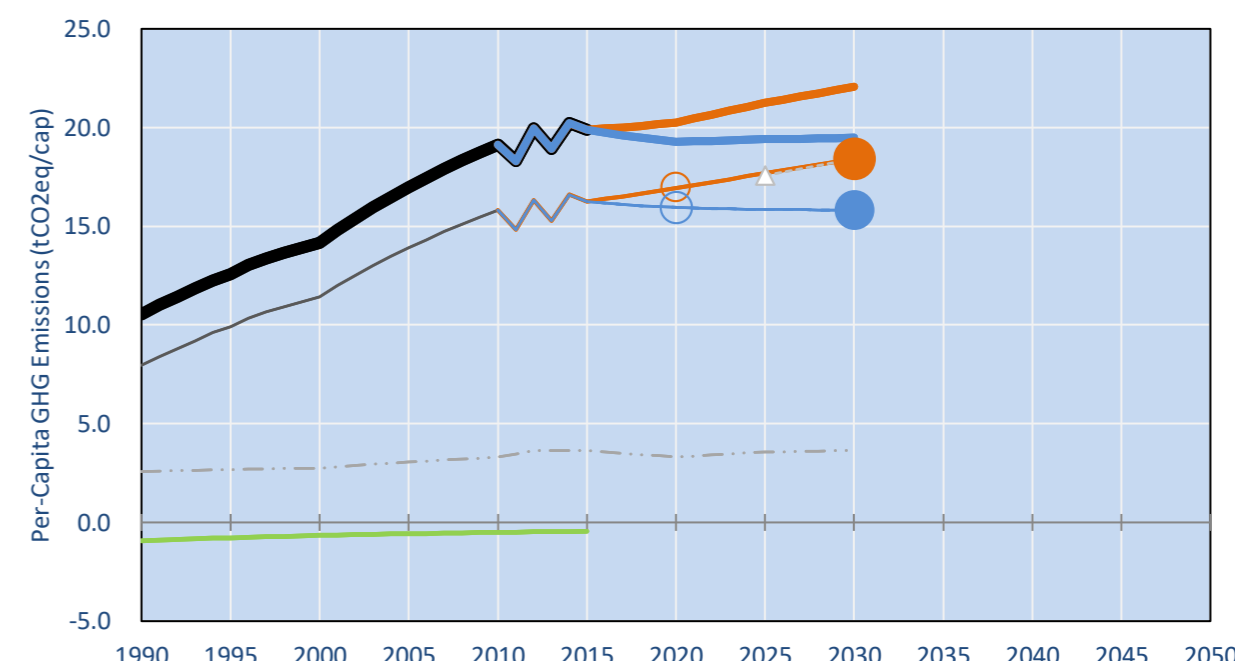
INDC Submitted: 10/11/2015

## GHG Emissions

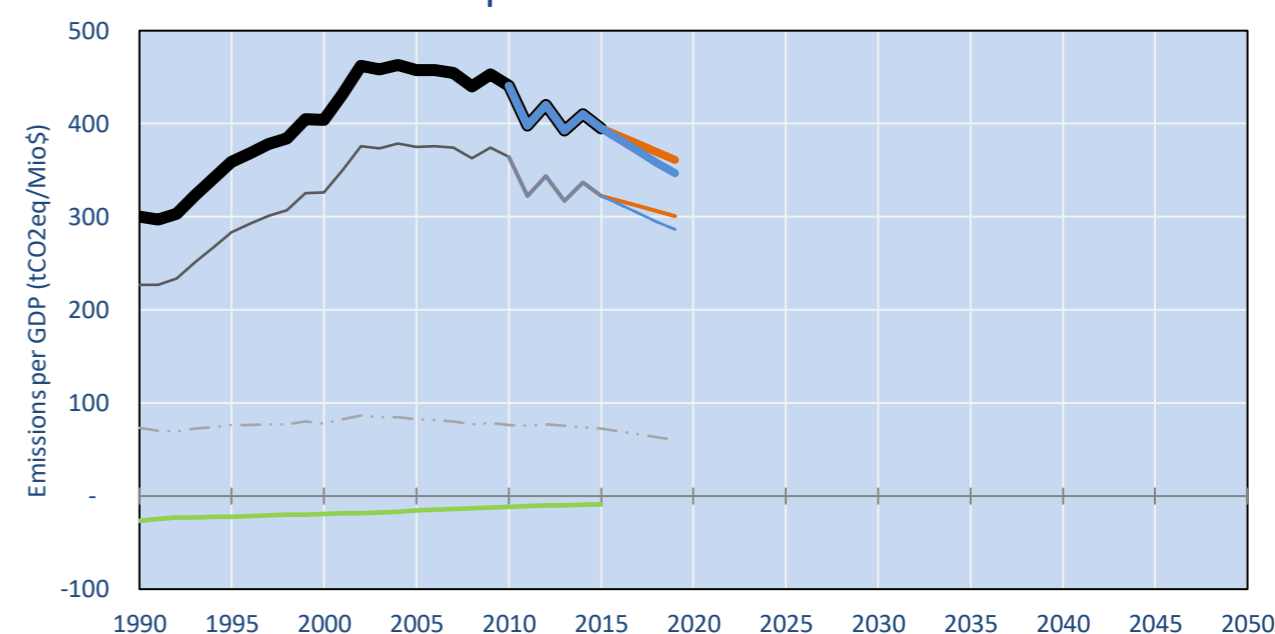


- Reference Total GHG excl. LULUCF
- Historical Covered Emissions, incl. LULUCF, if covered.
- LOW INDC Covered Emissions, incl. LULUCF if covered
- LOW INDC Covered + Non-Covered Emissions, excl. LULUCF
- HIGH INDC Covered Emissions, incl. LULUCF
- HIGH INDC Covered + Non-Covered Emissions, excl. LULUCF
- HIGH Cancun Pledges
- Reference LULUCF Emissions
- LOW INDC Levels
- LOW INDC Covered Emissions, excl. LULUCF
- HIGH INDC Levels
- HIGH INDC Covered Emissions, excl. LULUCF
- LOW Cancun Pledges
- Regional/Gas-specific BAU
- Not-covered GHG excl. LULUCF (Region Projection)

## Per-Capita Emissions



## GHG Emissions per GDP



## 2015 Total GHG Emissions excl. LULUCF

By Gas:

CO <sub>2</sub>	87.0%
CH <sub>4</sub>	10.8%
N <sub>2</sub> O	2.3%
F-gases	0.0%

By Sector:

Cat. 1 Energy	81.8%
Cat. 2, 3, 6 & 7	16.1%
Cat. 4. Agriculture	2.1%
F-gases	0.0%

## GHG Emissions

	1990	2000	2005	2010	2015	2020		2025		2030	
(MtCO <sub>2</sub> eq/yr in GWP AR5)						low	high	low	high	low	high
Assumed LULUCF Accounting Credits (-)/Debits (+)	-	-	-	-	-	-	-	-	-	-	-
NDC covered LULUCF Emissions	-	-	-	-	-	-	-	-	-	-	-
NDC covered Emissions excl. LULUCF	130	244	344	444	513	582	549	651	584	721	620
Total GHG excl. LULUCF	172	303	420	537	628	696	662	783	716	864	763
Total GHG incl. LULUCF	157	289	406	523	614	682	648	769	701	849	748

## Relative GHG Emissions

	1990	2000	2005	2010	2015	2020		2025		2030	
Total excl. LULUCF						low	high	low	high	low	high
Relative 1990	100%	176%	244%	311%	364%	404%	384%	454%	415%	501%	442%
Relative 2000	57%	100%	139%	177%	207%	230%	219%	258%	236%	285%	252%
Relative 2005	41%	72%	100%	128%	150%	166%	158%	186%	170%	206%	182%
Relative 2010	32%	56%	78%	100%	117%	130%	123%	146%	133%	161%	142%
Relative 2015	27%	48%	67%	86%	100%	111%	106%	125%	114%	138%	121%

## Per-Capita Emissions

	1990	2000	2005	2010	2015	2020		2025		2030	
Total excl. LULUCF						low	high	low	high	low	high
Population (Mio)	16	21	25	28	32	34	34	37	37	39	39
Per-Capita Emissions (tCO <sub>2</sub> eq/cap)	10.5	14.2	17.0	19.1	19.9	20.3	19.3	21.2	19.4	22.1	19.5
Relative 1990	100%	134%	161%	181%	189%	192%	183%	202%	184%	209%	185%
Relative 2000	74%	100%	120%	135%	140%	143%	136%	150%	137%	156%	138%
Relative 2005	62%	83%	100%	113%	117%	119%	114%	125%	114%	130%	115%
Relative 2010	55%	74%	89%	100%	104%	106%	101%	111%	102%	115%	102%
Relative 2015	53%	71%	85%	96%	100%	102%	97%	107%	98%	111%	98%

## Data Sources:

Cat1_CO2	PRIMAPHIST17	Cat5A1_CO2	UNFCCC CRF + Nat. Comms.
Cat2367_CO2	PRIMAPHIST17	Cat5A2_CO2	UNFCCC CRF + Nat. Comms.
Cat4_CO2	PRIMAPHIST17	Cat5LtoNonFL_CO2	UNFCCC CRF + Nat. Comms.
Cat5_CO2	PRIMAPHIST17	Cat5GCMCMWM_C	UNFCCC CRF
Cat1_CH4	PRIMAPHIST17	Cat5A1ForestFires	UNFCCC Cat5 + EDGAR(IPCC Database)
Cat2367_CH4	PRIMAPHIST17	Cat5A1HWP_CO2	UNFCCC CRF + Nat. Comms.
Cat4_CH4	PRIMAPHIST17	Cat5bisA_CO2	UNFCCC CRF + NATCOMM.
Cat5_CH4	PRIMAPHIST17	Cat5bisB_CO2	UNFCCC CRF + NATCOMM.
Cat1_N2O	PRIMAPHIST17	Cat5bisC_CO2	UNFCCC CRF + NATCOMM.
Cat2367_N2O	PRIMAPHIST17	Cat5bisD_CO2	UNFCCC CRF + NATCOMM.
Cat4_N2O	PRIMAPHIST17	Cat5bisE_CO2	UNFCCC CRF + NATCOMM.
Cat5_N2O	PRIMAPHIST17	PRO_WM_Cat5_G	UNFCCC Annex I Reports
Cat0_HFCs	PRIMAPHIST17	Metric	GWP AR5
Cat0_PFCs	PRIMAPHIST17		
Cat0_SF6	PRIMAPHIST17		
Population	UN 2015 Population Projections MEDIUM		
GDP	IMF WEO 2015, PPP adjusted GDP, constant 2009 prices...		
	IPCC WG3 Scenario IMAGE   AMPERE2-550-FullTech-HST		
	PRIMAPHIST16 description: www.pik-potsdam.de/primap-live/primap-hist/		
	Gratefully acknowledged in particular: PRIMAP, CAIT, CDIAC, EDGAR, IPCC, IEA, UNEP Gap Team, AMPERE Team and comments on earlier versions, in particular by Giacomo Grassi. Errors and misjudgements are our own. Malte Meinshausen & Ryan Alexander; The "Fiji COP23" Edition was enabled through support via the BMUB project UM14 41 4060		
	This Factsheet is available at www.climatecollege.unimelb.edu.au/indc-factsheets. Check out as well: www.climateactiontracker.org, www.mitigation-contributions.org, cait.wri.org, infographics.pbl.nl/indc, live.primap.org, www.unep.org/climatechange/pledgepipeline, and our twitter feed @ClimateCollege		

climatecollege.unimelb.edu.au



## Various 'fair' contributions for a global 'least-cost' 2°C path (total incl. LULUCF):

	2025 rel. 2010:	2030 rel. 2010:
LEADER	-29%	-51%
CDC	-11%	-22%
ECPC50	-21%	-38%
ECPC90	-18%	-34%
GDR	-12%	-22%
INDC HIGH	34%	43%
INDC LOW	47%	62%

## More info on www.mitigation-contributions.org

"Fair" contributions for a global 'least-cost' 2°C track:

LEADER	Leader
CDC	Common-but-diff. per-cap. convergence
ECPC50	Eq. cum. Per-capita since 1950
ECPC90	Eq. cum. Per-capita since 1990
GDR	Greenhouse Development Rights
#N/A	No available data