

Saudi Arabia

Per-Capita Emissions in 2030 rel. 2015 (excl. LULUCF): **+5%**

NDC 2025

NDC 2030

2015 World Rank

2025 World Rank

2030 World Rank

0% -14% rel. BAU of 717.1 Mt

Share of World Emissions excl. LULUCF (Rank):

1.3% #15

1.4% #12

1.5% #12

Per-Capita Emissions (tCO₂eq/cap)

19.7t #10

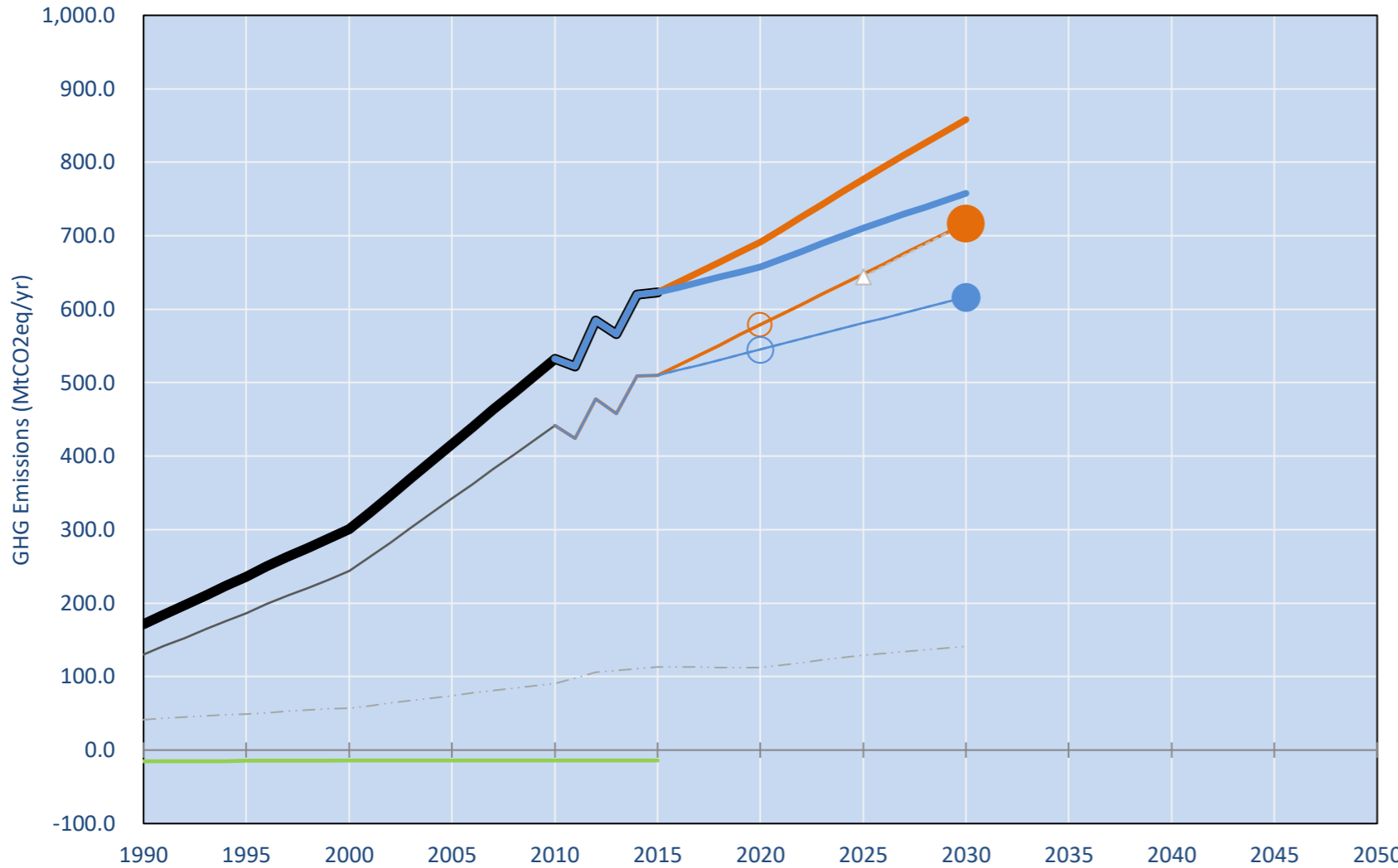
20.2t #9

20.6t #10

NDC: Measures to reduce emissions by up to 130 MtCO₂eq by 2030 in case the continued economic growth scenario materializes. (GWP unclear)

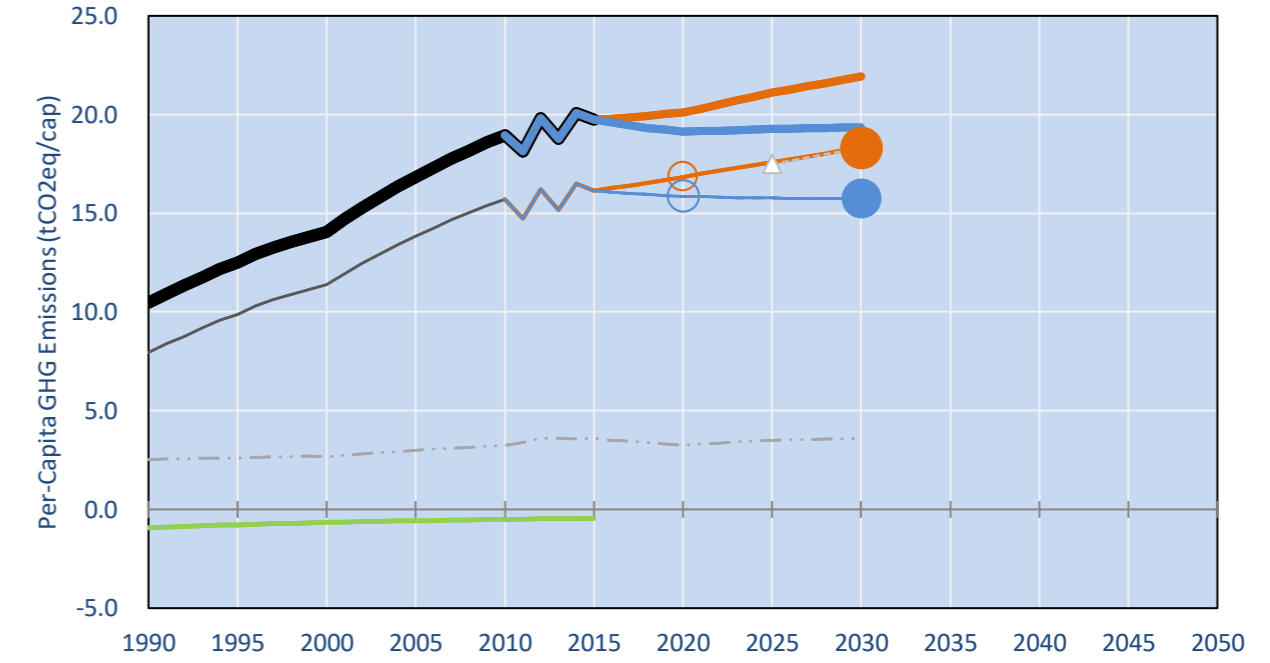
INDC Submitted: 10/11/2015

GHG Emissions

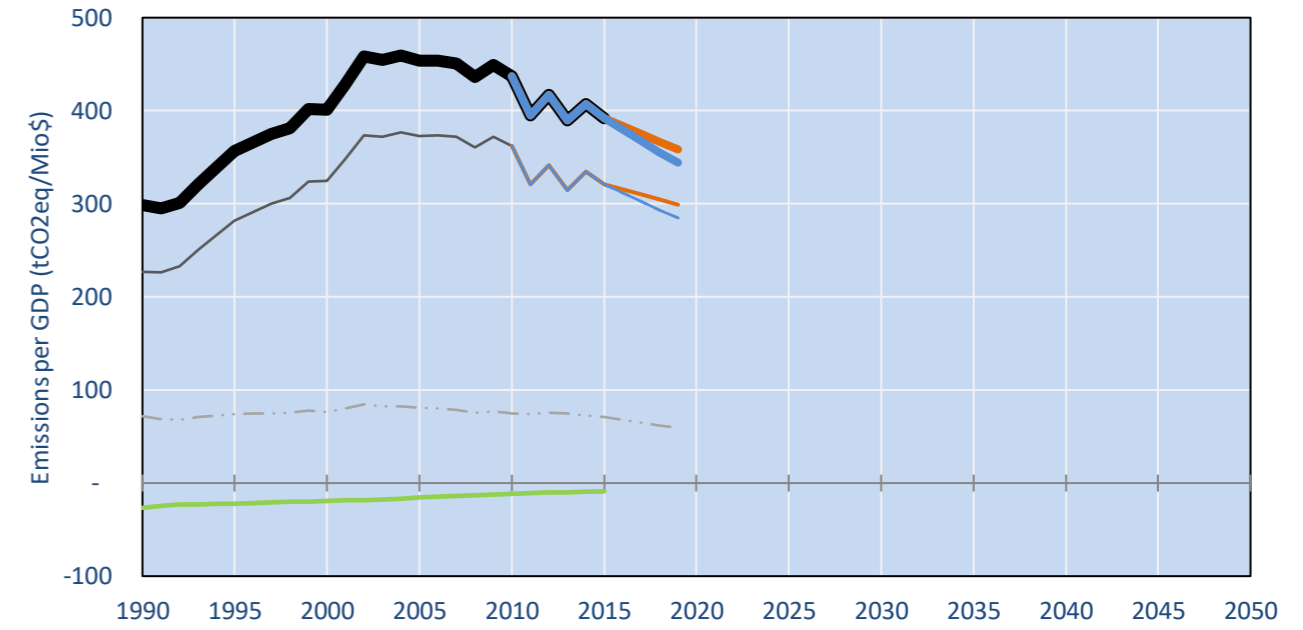


- Reference Total GHG excl. LULUCF
- Historical Covered Emissions, incl. LULUCF, if covered.
- LOW INDC Covered Emissions, incl. LULUCF if covered
- LOW INDC Covered + Non-Covered Emissions, excl. LULUCF
- HIGH INDC Covered Emissions, incl. LULUCF
- HIGH INDC Covered + Non-Covered Emissions, excl. LULUCF
- HIGH Cancun Pledges
- Reference LULUCF Emissions
- LOW INDC Levels
- LOW INDC Covered Emissions, excl. LULUCF
- HIGH INDC Levels
- HIGH INDC Covered Emissions, excl. LULUCF
- LOW Cancun Pledges
- Regional/Gas-specific BAU
- Not-covered GHG excl. LULUCF (Region Projection)

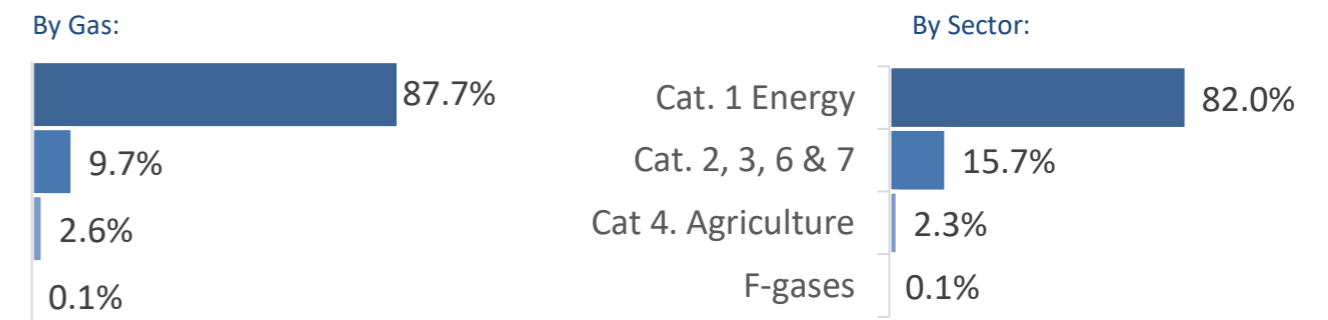
Per-Capita Emissions



GHG Emissions per GDP



2015 Total GHG Emissions excl. LULUCF



GHG Emissions

	1990	2000	2005	2010	2015	2020	2025	2030	
(MtCO ₂ eq/yr in GWP AR4)						low	high	low	high
Assumed LULUCF Accounting Credits (-)/Debits (+)									
NDC covered LULUCF Emissions									
NDC covered Emissions excl. LULUCF	130	243	342	442	510	579	545	648	581
Total GHG excl. LULUCF	171	301	416	533	623	691	657	777	710
Total GHG incl. LULUCF	156	287	402	518	609	677	643	763	696

Relative GHG Emissions

	1990	2000	2005	2010	2015	2020	2025	2030	
Total excl. LULUCF						low	high	low	high
Relative 1990	100%	176%	243%	311%	364%	403%	384%	454%	415%
Relative 2000	57%	100%	139%	177%	207%	230%	219%	259%	236%
Relative 2005	41%	72%	100%	128%	150%	166%	158%	187%	171%
Relative 2010	32%	56%	78%	100%	117%	130%	123%	146%	133%
Relative 2015	28%	48%	67%	86%	100%	111%	106%	125%	114%

Per-Capita Emissions

	1990	2000	2005	2010	2015	2020	2025	2030	
Total excl. LULUCF						low	high	low	high
Population (Mio)	16	21	25	28	32	34	34	37	37
Per-Capita Emissions (tCO ₂ eq/cap)	10.5	14.1	16.8	19.0	19.7	20.1	19.1	21.1	19.3
Relative 1990	100%	134%	161%	181%	189%	192%	183%	201%	184%
Relative 2000	74%	100%	120%	135%	140%	143%	136%	150%	137%
Relative 2005	62%	84%	100%	113%	117%	119%	114%	125%	115%
Relative 2010	55%	74%	89%	100%	104%	106%	101%	111%	102%
Relative 2015	53%	71%	85%	96%	100%	102%	97%	107%	98%

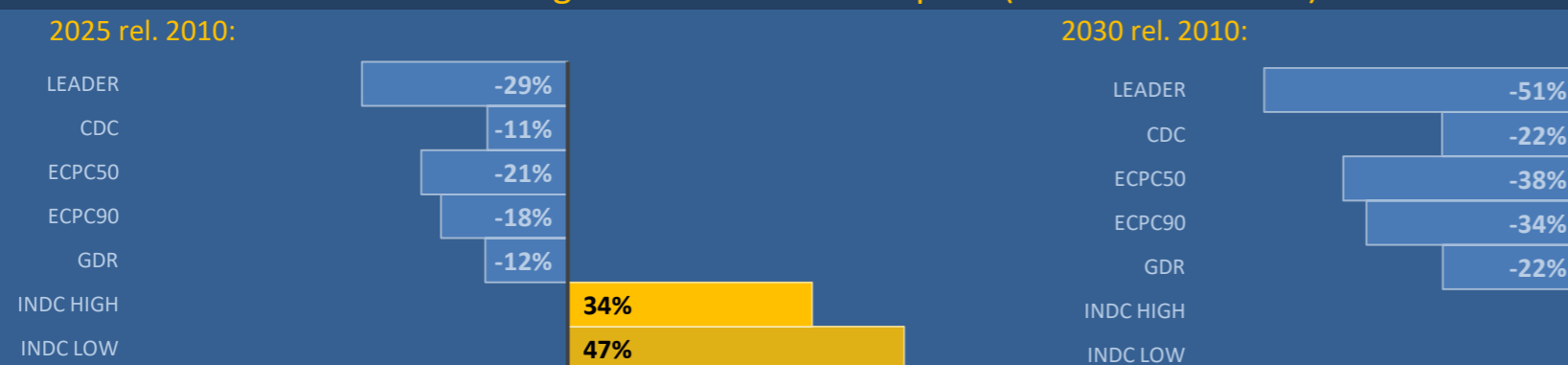
Data Sources:

- Cat1_CO2 PRIMAPHIST17
- Cat2367_CO2 PRIMAPHIST17
- Cat4_CO2 PRIMAPHIST17
- Cat5_CO2 PRIMAPHIST17
- Cat1_CH4 PRIMAPHIST17
- Cat2367_CH4 PRIMAPHIST17
- Cat4_CH4 PRIMAPHIST17
- Cat5_CH4 PRIMAPHIST17
- Cat1_N2O PRIMAPHIST17
- Cat2367_N2O PRIMAPHIST17
- Cat4_N2O PRIMAPHIST17
- Cat5_N2O PRIMAPHIST17
- Cat0_HFCs PRIMAPHIST17
- Cat0_PFCs PRIMAPHIST17
- Cat0_SF6 PRIMAPHIST17
- Population UN 2015 Population Projections MEDIUM
- GDP IMF WEO 2015, PPP adjusted GDP, constant 2009 prices...
- IPCC WG3 Scenario IMAGE | AMPERE2-550-FullTech-HST
- PRIMAPHIST16 description: www.pik-potsdam.de/primap-live/primap-hist/
- Gratefully acknowledged in particular: PRIMAP, CAIT, CDIAC, EDGAR, IPCC, IEA, UNEP Gap Team, AMPERE Team and comments on earlier versions, in particular by Giacomo Grassi. Errors and misjudgements are our own. Malte Meinshausen & Ryan Alexander; The "Fiji COP23" Edition was enabled through support via the BMUB project UM14 41 4060
- This Factsheet is available at www.climatecollege.unimelb.edu.au/indc-factsheets. Check out as well: www.climateactiontracker.org, www.mitigation-contributions.org, cait.wri.org, infographics.pbl.nl/indc, live.primap.org, www.unep.org/climatechange/pledgepipeline, and our twitter feed @ClimateCollege
- Cat5A1_CO2 UNFCCC CRF + Nat. Comms.
- Cat5A2_CO2 UNFCCC CRF + Nat. Comms.
- Cat5LtoNonFL_CO UNFCCC CRF + Nat. Comms.
- Cat5GCMCMWM_C UNFCCC CRF
- Cat5A1ForestFires UNFCCC Cat5 + EDGAR(IPCC Database)
- Cat5A1HWP_CO2 UNFCCC CRF + Nat. Comms.
- Cat5bisA_CO2 UNFCCC CRF + NATCOMM.
- Cat5bisB_CO2 UNFCCC CRF + NATCOMM.
- Cat5bisC_CO2 UNFCCC CRF + NATCOMM.
- Cat5bisD_CO2 UNFCCC CRF + NATCOMM.
- Cat5bisE_CO2 UNFCCC CRF + NATCOMM.
- PRO_WM_Cat5_G UNFCCC Annex I Reports
- Metric GWP AR4

climatecollege.unimelb.edu.au



Various 'fair' contributions for a global 'least-cost' 2°C path (total incl. LULUCF):



More info on www.mitigation-contributions.org

"Fair" contributions for a global 'least-cost' 2°C track:

- LEADER Leader
- CDC Common-but-diff. per-cap. convergence
- ECPC50 Eq. cum. Per-capita since 1950
- ECPC90 Eq. cum. Per-capita since 1990
- GDR Greenhouse Development Rights
- #N/A No available data