



Saint Vincent and the Grenadines

Per-Capita Emissions in 2030 rel. 2015 (excl. LULUCF): **+17%**

NDC 2025

NDC 2030

2015 World Rank

2025 World Rank

2030 World Rank

-22% rel. BAU of 0.6 Mt

Share of World Emissions excl. LULUCF (Rank):

0.0% #184

0.0% #182

0.0% #181

Per-Capita Emissions (tCO2eq/cap)

3t #122

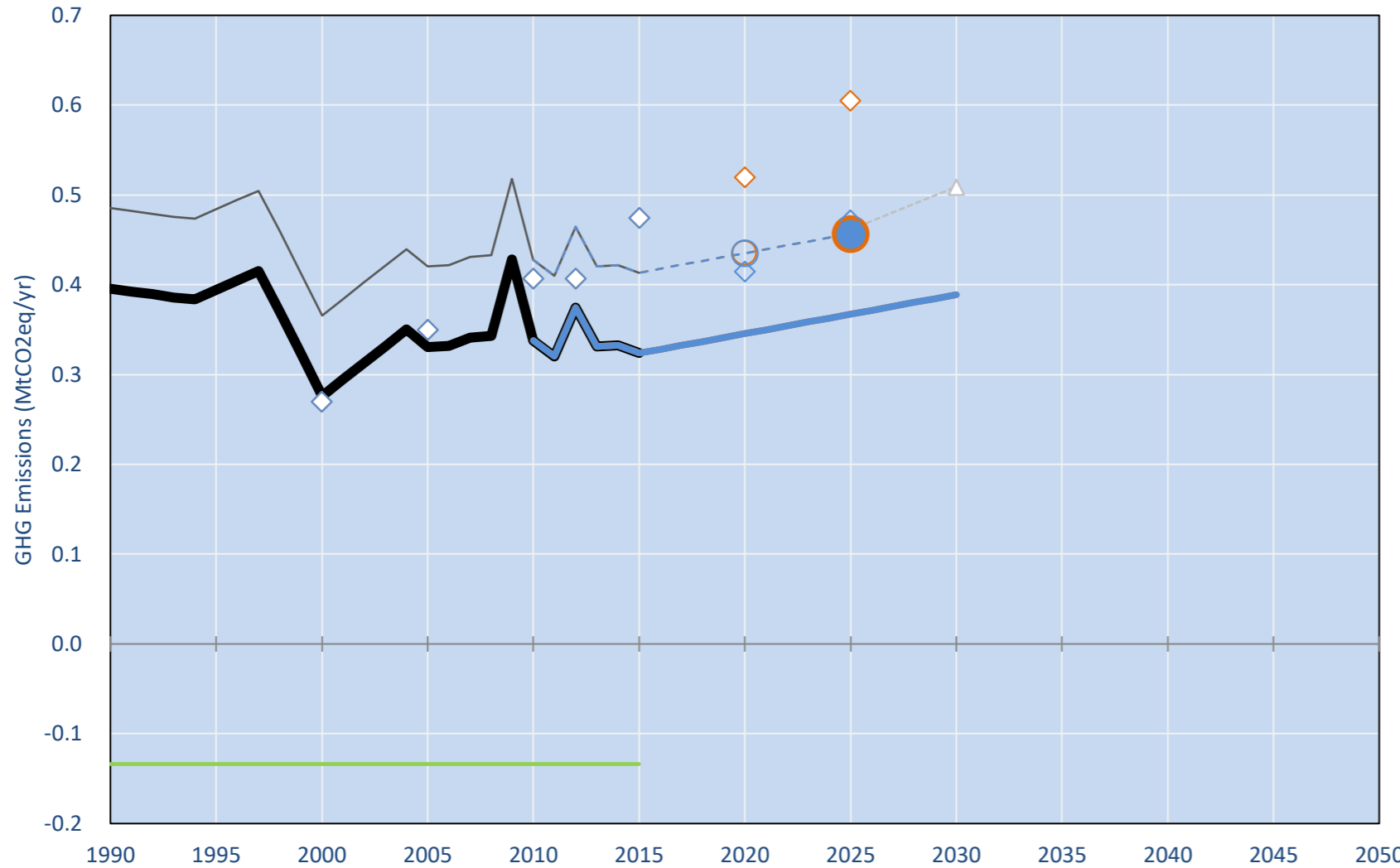
3.3t #118

3.5t #113

NDC: Unconditional, economy-wide GHG target of 22% below BAU by 2025. (GWP AR4)

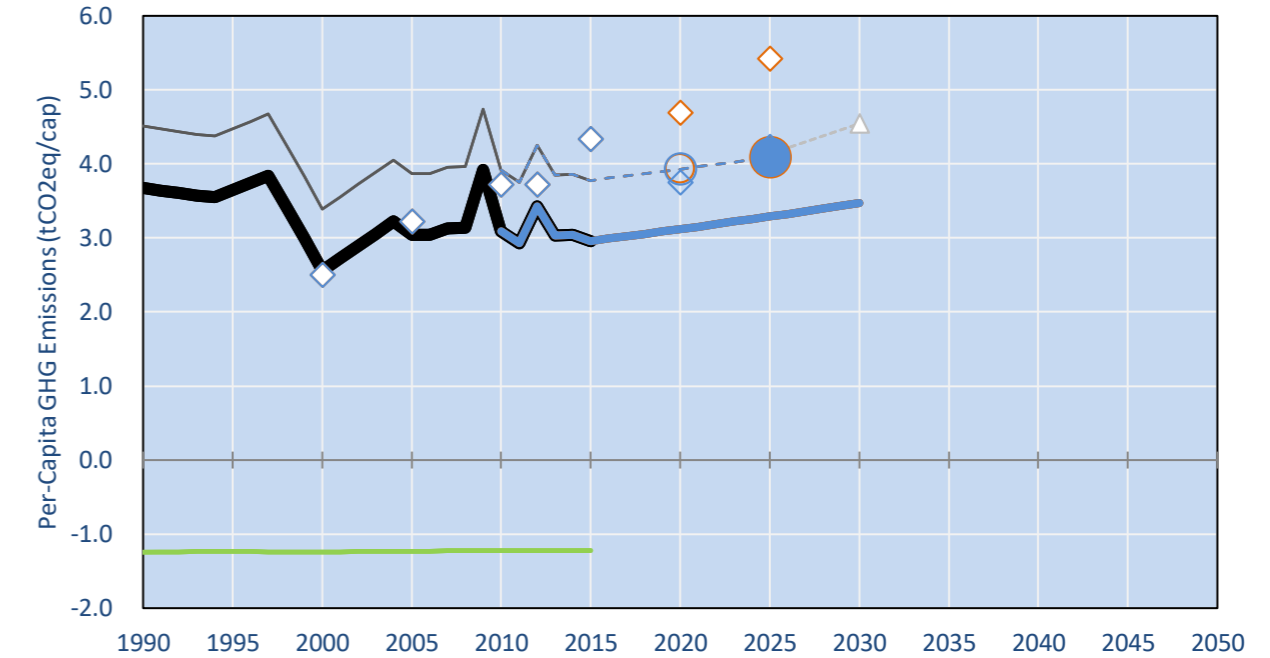
INDC Submitted: 18/11/2015

GHG Emissions

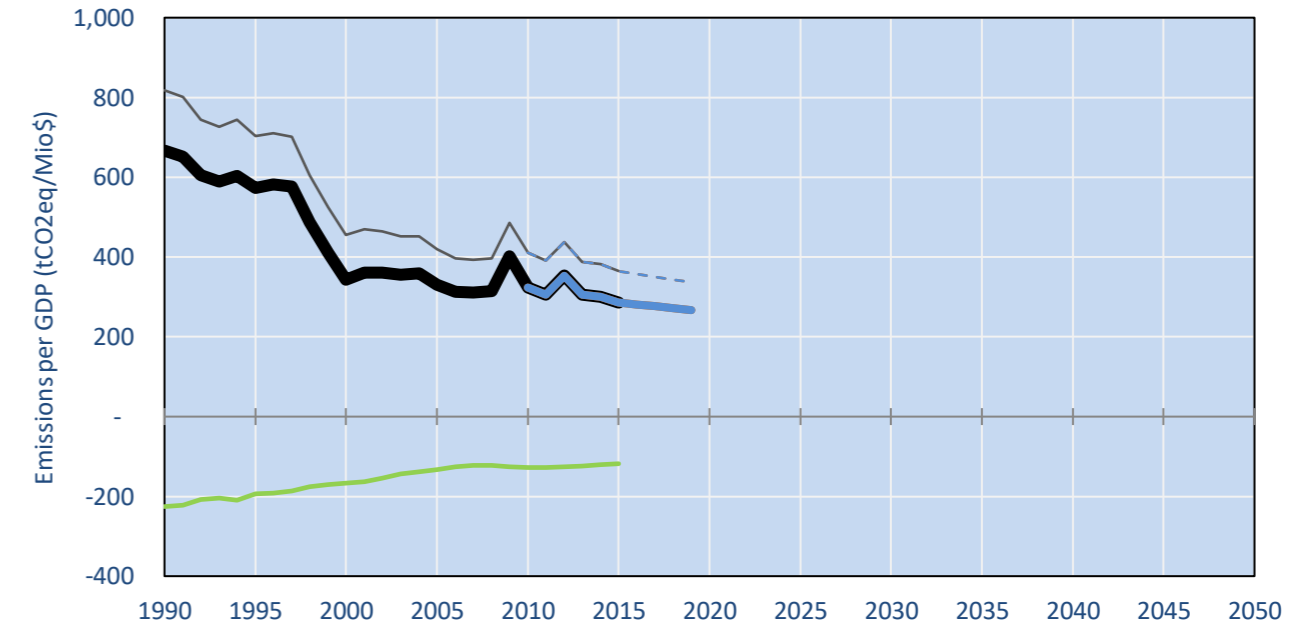


- Reference Total GHG excl. LULUCF
- Historical Covered Emissions, incl. LULUCF, if covered.
- LOW INDC Covered Emissions, incl. LULUCF if covered
- LOW INDC Covered + Non-Covered Emissions, excl. LULUCF
- HIGH INDC Covered Emissions, incl. LULUCF
- HIGH INDC Covered + Non-Covered Emissions, excl. LULUCF
- HIGH Cancun Pledges
- VCT INDC INDC (GWP AR4)
- Not-covered GHG excl. LULUCF (Region Projection)
- Reference LULUCF Emissions
- LOW INDC Levels
- LOW INDC Covered Emissions, excl. LULUCF
- HIGH INDC Levels
- HIGH INDC Covered Emissions, excl. LULUCF
- LOW Cancun Pledges
- VCT INDC BAU (GWP AR4)
- Regional/Gas-specific BAU

Per-Capita Emissions



GHG Emissions per GDP



2015 Total GHG Emissions excl. LULUCF

By Gas:

CO2 61.6%
CH4 27.4%
N2O 9.8%
F-gases 1.2%

By Sector:

Cat. 1 Energy 61.7%
Cat. 2, 3, 6 & 7 28.4%
Cat 4. Agriculture 8.7%
F-gases 1.2%

GHG Emissions

	1990	2000	2005	2010	2015	2020		2025		2030	
(MtCO2eq/yr in GWP SAR)						low	high	low	high	low	high
Assumed LULUCF Accounting Credits (-)/Debits (+)											
NDC covered LULUCF Emissions	0	0	0	0	0	0	0	0	0	0	0
NDC covered Emissions excl. LULUCF	0	0	0	0	0	0	0	0	0	-	-
Total GHG excl. LULUCF	0	0	0	0	0	0	0	0	0	0	0
Total GHG incl. LULUCF	0	0	0	0	0	0	0	0	0	0	0

Relative GHG Emissions

	1990	2000	2005	2010	2015	2020		2025		2030	
Total excl. LULUCF						low	high	low	high	low	high
Relative 1990	100%	70%	84%	86%	82%	87%	87%	93%	93%	98%	98%
Relative 2000	143%	100%	120%	123%	117%	125%	125%	133%	133%	141%	141%
Relative 2005	120%	100%	100%	102%	104%	104%	104%	111%	111%	118%	118%
Relative 2010	117%	82%	98%	100%	96%	102%	102%	109%	109%	115%	115%
Relative 2015	122%	85%	102%	104%	100%	107%	107%	113%	113%	120%	120%

Per-Capita Emissions

	1990	2000	2005	2010	2015	2020		2025		2030	
Total excl. LULUCF						low	high	low	high	low	high
Population (Mio)	0	0	0	0	0	0	0	0	0	0	0
Per-Capita Emissions (tCO2eq/cap)	3.7	2.6	3.0	3.1	3.0	3.1	3.1	3.3	3.3	3.5	3.5
Relative 1990	100%	70%	83%	84%	80%	85%	85%	89%	89%	94%	94%
Relative 2000	144%	100%	119%	121%	116%	122%	122%	129%	129%	136%	136%
Relative 2005	121%	84%	100%	102%	97%	103%	103%	108%	108%	114%	114%
Relative 2010	119%	83%	98%	100%	96%	101%	101%	106%	106%	112%	112%
Relative 2015	124%	86%	103%	105%	100%	105%	105%	111%	111%	117%	117%

Data Sources:

Cat1_CO2	PRIMAPHIST17	Cat5A1_CO2	UNFCCC CRF + Nat. Comms.
Cat2367_CO2	PRIMAPHIST17	Cat5A2_CO2	UNFCCC CRF + Nat. Comms.
Cat4_CO2	PRIMAPHIST17	Cat5LtoNonFL_CO2	UNFCCC CRF + Nat. Comms.
Cat5_CO2	PRIMAPHIST17	Cat5GMCMWMM_C	UNFCCC CRF
Cat1_CH4	PRIMAPHIST17	Cat5A1ForestFires	UNFCCC Cat5 + EDGAR(IPCC Database)
Cat2367_CH4	PRIMAPHIST17	Cat5A1HWP_CO2	UNFCCC CRF + Nat. Comms.
Cat4_CH4	PRIMAPHIST17	Cat5bisA_CO2	UNFCCC CRF + NATCOMM.
Cat5_CH4	PRIMAPHIST17	Cat5bisB_CO2	UNFCCC CRF + NATCOMM.
Cat1_N2O	PRIMAPHIST17	Cat5bisC_CO2	UNFCCC CRF + NATCOMM.
Cat2367_N2O	PRIMAPHIST17	Cat5bisD_CO2	UNFCCC CRF + NATCOMM.
Cat4_N2O	PRIMAPHIST17	Cat5bisE_CO2	UNFCCC CRF + NATCOMM.
Cat5_N2O	PRIMAPHIST17	PRO_WM_Cat5_G	UNFCCC Annex I Reports
Cat0_HFCs	PRIMAPHIST17	Metric	GWP SAR
Cat0_PFCs	PRIMAPHIST17		
Cat0_SF6	PRIMAPHIST17		
Population	UN 2015 Population Projections MEDIUM		
GDP	IMF WEO 2015, PPP adjusted GDP, constant 2009 prices...		
IPCC WG3 Scenario	IMAGE AMPERE2-550-FullTech-HST		
PRIMAPHIST16 description:	www.pik-potsdam.de/primap-live/primap-hist/		
Gratefully acknowledged in particular: PRIMAP, CAIT, CDIAC, EDGAR, IPCC, IEA, UNEP GAP Team, AMPERE Team and comments on earlier versions, in particular by Giacomo Grassi. Errors and misjudgements are our own. Malte Meinshausen & Ryan Alexander; The "Fiji COP23" Edition was enabled through support via the BMUB project UM14 41 4060			
This Factsheet is available at www.climatecollege.unimelb.edu.au/indc-factsheets . Check out as well: www.climateactiontracker.org , www.mitigation-contributions.org , cait.wri.org , infographics.pbl.nl/indc/ , live.primap.org , www.unep.org/climatechange/pledgepipeline , and our twitter feed @ClimateCollege			

climatecollege.unimelb.edu.au



Various 'fair' contributions for a global 'least-cost' 2°C path (total incl. LULUCF):

More info on www.mitigation-contributions.org

2025 rel. 2010:

2030 rel. 2010:

LEADER	#N/A	LEADER	#N/A
CDC	#N/A	CDC	#N/A
ECPC50	#N/A	ECPC50	#N/A
ECPC90	#N/A	ECPC90	#N/A
GDR	#N/A	GDR	#N/A
INDC HIGH	14%	INDC HIGH	25%
INDC LOW	14%	INDC LOW	25%

"Fair" contributions for a global 'least-cost' 2°C track:

LEADER	Leader
CDC	Common-but-diff. per-cap. convergence
ECPC50	Eq. cum. Per-capita since 1950
ECPC90	Eq. cum. Per-capita since 1990
GDR	Greenhouse Development Rights
#N/A	No available data