



# Saint Vincent and the Grenadines

Per-Capita Emissions in 2030 rel. 2015 (excl. LULUCF): **+14%**

NDC 2025

NDC 2030

2015 World Rank

2025 World Rank

2030 World Rank

-22% rel. BAU of 0.6 Mt

Share of World Emissions excl. LULUCF (Rank):

0.0% #184

0.0% #182

0.0% #181

Per-Capita Emissions (tCO2eq/cap)

3.1t #124

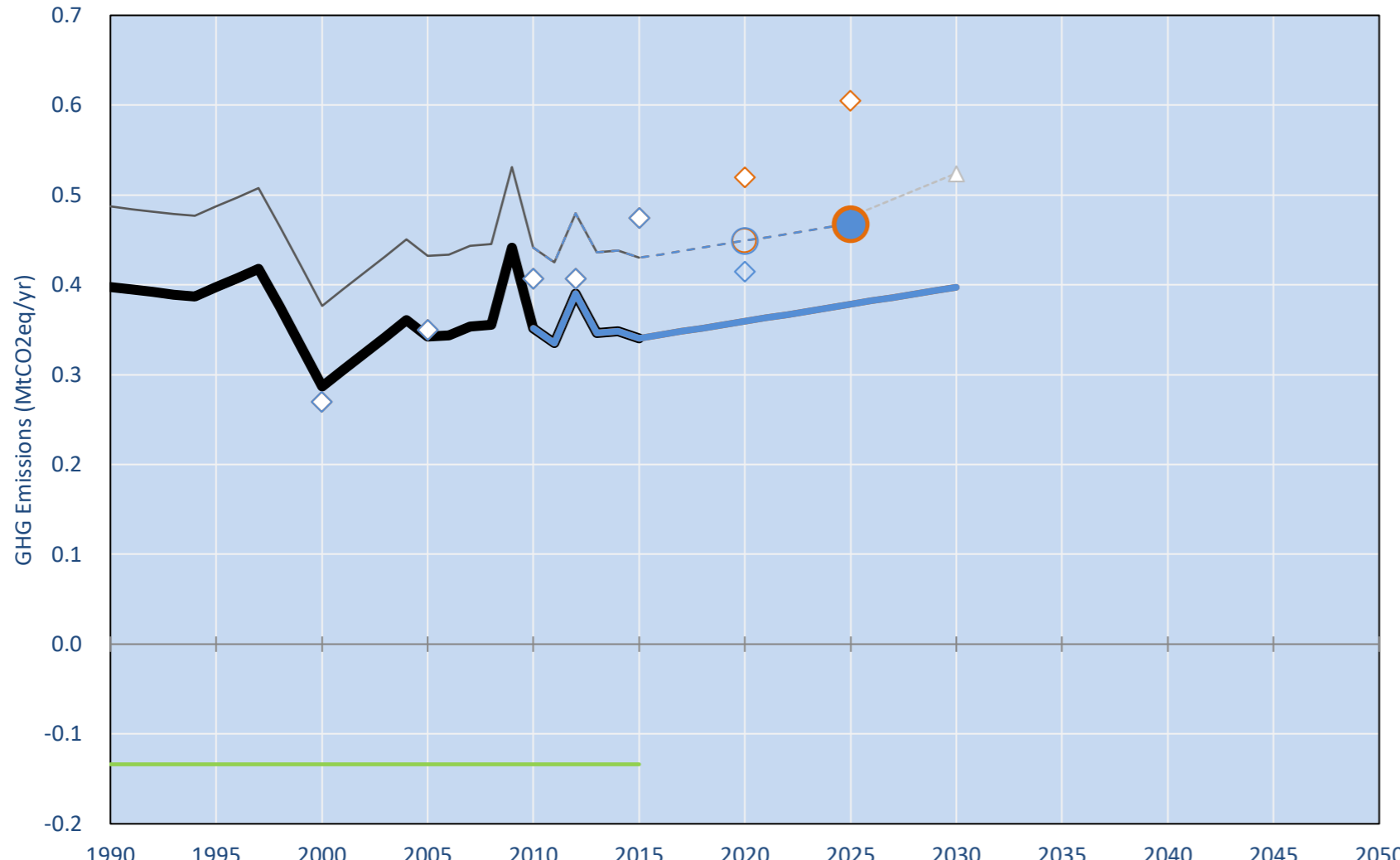
3.4t #118

3.5t #115

NDC: Unconditional, economy-wide GHG target of 22% below BAU by 2025. (GWP AR4)

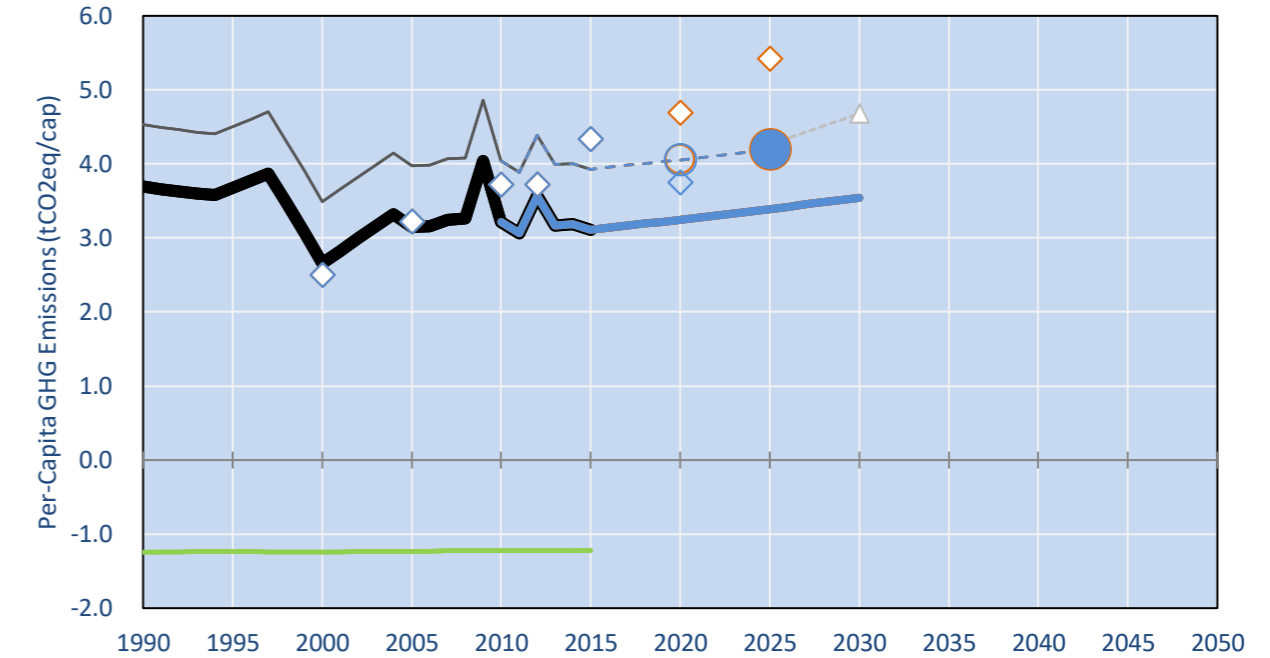
INDC Submitted: 18/11/2015

## GHG Emissions

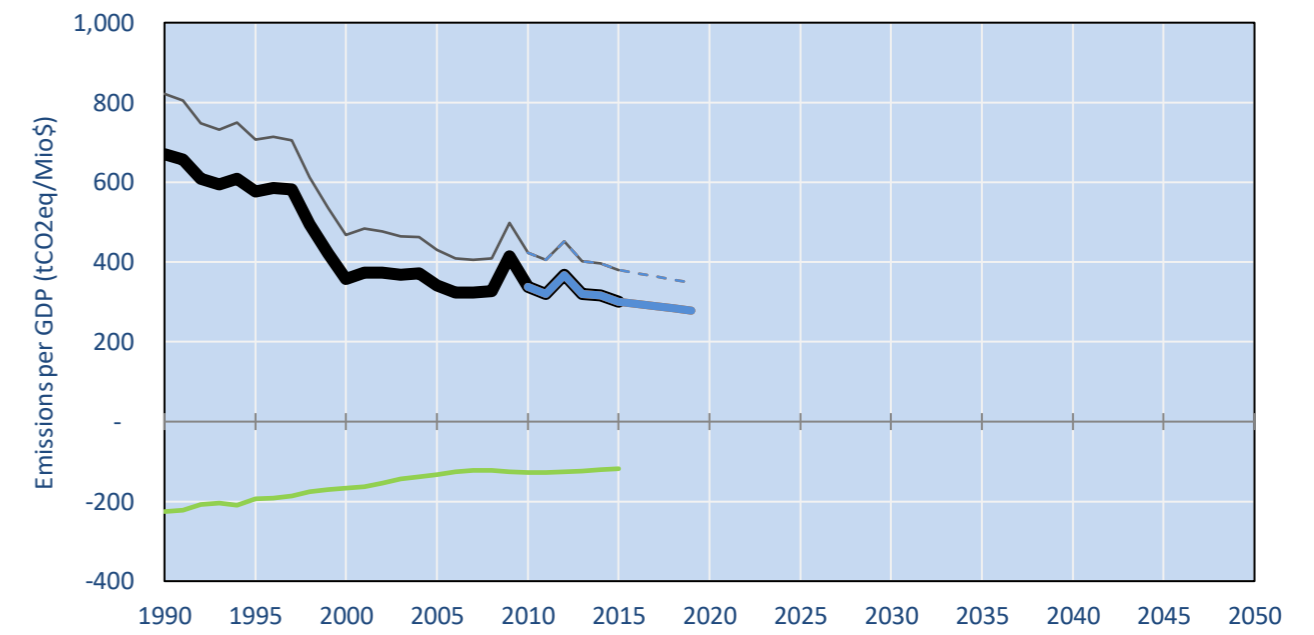


- Reference Total GHG excl. LULUCF
- Historical Covered Emissions, incl. LULUCF, if covered.
- LOW INDC Covered Emissions, incl. LULUCF if covered
- LOW INDC Covered + Non-Covered Emissions, excl. LULUCF
- HIGH INDC Covered Emissions, incl. LULUCF
- HIGH INDC Covered + Non-Covered Emissions, excl. LULUCF
- HIGH Cancun Pledges
- VCT INDC INDC (GWP AR4)
- Not-covered GHG excl. LULUCF (Region Projection)
- Reference LULUCF Emissions
- LOW INDC Levels
- LOW INDC Covered Emissions, excl. LULUCF
- HIGH INDC Levels
- HIGH INDC Covered Emissions, excl. LULUCF
- LOW Cancun Pledges
- VCT INDC BAU (GWP AR4)
- Regional/Gas-specific BAU

## Per-Capita Emissions



## GHG Emissions per GDP



## 2015 Total GHG Emissions excl. LULUCF

By Gas:

CO2 58.5%  
CH4 31.1%  
N2O 9.0%  
F-gases 1.4%

By Sector:

Cat. 1 Energy 58.8%  
Cat. 2, 3, 6 & 7 31.6%  
Cat 4. Agriculture 8.3%  
F-gases 1.4%

## GHG Emissions

	1990	2000	2005	2010	2015	2020	2025	2030	
(MtCO2eq/yr in GWP AR4)						low	high	low	high
Assumed LULUCF Accounting Credits (-)/Debits (+)									
NDC covered LULUCF Emissions	0	0	0	0	0	0	0	0	0
NDC covered Emissions excl. LULUCF	0	0	0	0	0	0	0	0	0
Total GHG excl. LULUCF	0	0	0	0	0	0	0	0	0
Total GHG incl. LULUCF	0	0	0	0	0	0	0	0	0

## Relative GHG Emissions

	1990	2000	2005	2010	2015	2020	2025	2030	
Total excl. LULUCF						low	high	low	high
Relative 1990	100%	72%	86%	88%	86%	90%	90%	95%	95%
Relative 2000	139%	100%	119%	123%	119%	125%	125%	132%	132%
Relative 2005	116%	100%	103%	103%	99%	105%	105%	110%	110%
Relative 2010	113%	82%	97%	100%	97%	102%	102%	108%	108%
Relative 2015	117%	84%	101%	103%	100%	106%	106%	111%	111%

## Per-Capita Emissions

	1990	2000	2005	2010	2015	2020	2025	2030	
Total excl. LULUCF						low	high	low	high
Population (Mio)	0	0	0	0	0	0	0	0	0
Per-Capita Emissions (tCO2eq/cap)	3.7	2.7	3.1	3.2	3.1	3.2	3.2	3.4	3.4
Relative 1990	100%	72%	85%	87%	84%	88%	88%	92%	92%
Relative 2000	139%	100%	118%	121%	117%	122%	122%	128%	128%
Relative 2005	117%	84%	100%	102%	99%	103%	103%	108%	108%
Relative 2010	115%	83%	98%	100%	97%	101%	101%	105%	105%
Relative 2015	119%	85%	101%	103%	100%	104%	104%	109%	109%

## Data Sources:

Cat1\_CO2 PRIMAPHIST17  
Cat2367\_CO2 PRIMAPHIST17  
Cat4\_CO2 PRIMAPHIST17  
Cat5\_CO2 PRIMAPHIST17  
Cat1\_CH4 PRIMAPHIST17  
Cat2367\_CH4 PRIMAPHIST17  
Cat4\_CH4 PRIMAPHIST17  
Cat5\_CH4 PRIMAPHIST17  
Cat1\_N2O PRIMAPHIST17  
Cat2367\_N2O PRIMAPHIST17  
Cat4\_N2O PRIMAPHIST17  
Cat5\_N2O PRIMAPHIST17  
Cat0\_HFCs PRIMAPHIST17  
Cat0\_PFCs PRIMAPHIST17  
Cat0\_SF6 PRIMAPHIST17  
Population UN 2015 Population Projections MEDIUM  
GDP IMF WEO 2015, PPP adjusted GDP, constant 2009 prices...  
IPCC WG3 Scenario IMAGE | AMPERE2-550-FullTech-HST  
PRIMAPHIST16 description: www.pik-potsdam.de/primap-live/primap-hist/  
Gratefully acknowledged in particular: PRIMAP, CAIT, CDIAC, EDGAR, IPCC, IEA, UNEP GAP Team, AMPERE Team and comments on earlier versions, in particular by Giacomo Grassi. Errors and misjudgements are our own. Malte Meinshausen & Ryan Alexander; The "Fiji COP23" Edition was enabled through support via the BMUB project UM14 41 4060  
This Factsheet is available at www.climatecollege.unimelb.edu.au/indc-factsheets. Check out as well: www.climateactiontracker.org, www.mitigation-contributions.org, cait.wri.org, infographics.pbl.nl/indc, live.primap.org, www.unep.org/climatechange/pledgepipeline, and our twitter feed @ClimateCollege  
climatecollege.unimelb.edu.au  
AUSTRALIAN-GERMAN CLIMATE & ENERGY COLLEGE

Meinshausen, Alexander et al., www.climatecollege.unimelb.edu.au/indc-factsheets, The University of Melbourne



## Various 'fair' contributions for a global 'least-cost' 2°C path (total incl. LULUCF):

	2025 rel. 2010:	2030 rel. 2010:
LEADER	#N/A	LEADER
CDC	#N/A	CDC
ECPC50	#N/A	ECPC50
ECPC90	#N/A	ECPC90
GDR	#N/A	GDR
INDC HIGH	12%	INDC HIGH
INDC LOW	12%	INDC LOW

## More info on www.mitigation-contributions.org

	#N/A	"Fair" contributions for a global 'least-cost' 2°C track:
LEADER	#N/A	LEADER
CDC	#N/A	Common-but-diff. per-cap. convergence
ECPC50	#N/A	Eq. cum. Per-capita since 1950
ECPC90	#N/A	Eq. cum. Per-capita since 1990
GDR	#N/A	Greenhouse Development Rights
#N/A	#N/A	No available data