

Shown: 2025 & 2030: Min/max of unconditional and conditional targets

Paris Agreement ratified on: 05/10/2016

Portugal

Per-Capita Emissions in 2030 rel. 2015 (excl. LULUCF): **+2%**

NDC 2025

NDC 2030

2015 World Rank

2025 World Rank

2030 World Rank

Share of World Emissions excl. LULUCF (Rank):

0.1% #69

0.1% #73

0.1% #79

Per-Capita Emissions (tCO₂eq/cap)

6.8t #68

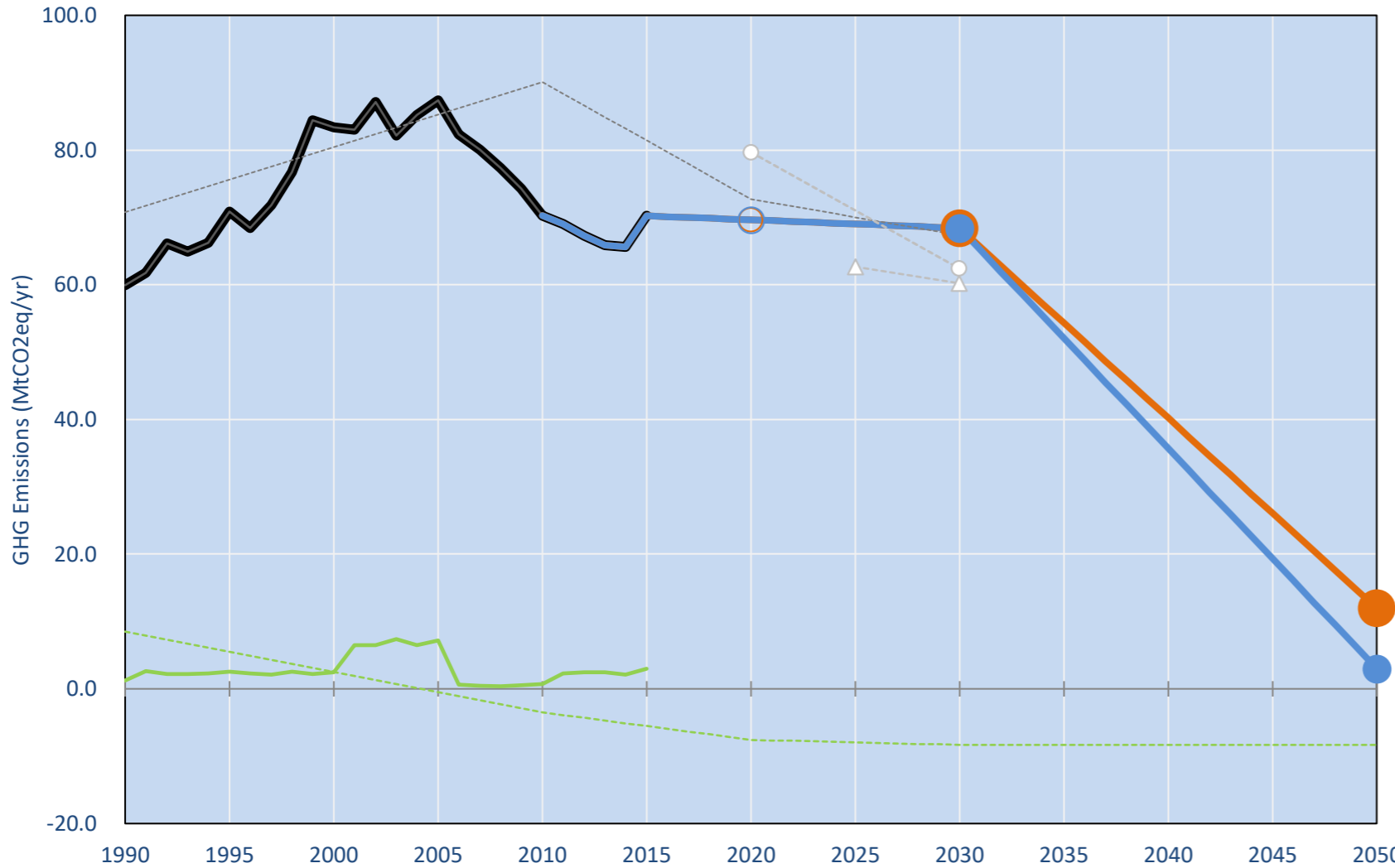
6.9t #66

7t #63

NDC: Contributing to the joint EU28 INDC with intra-EU split up of Emission Trading System and Effort Sharing Sectors.. (GWP AR4)

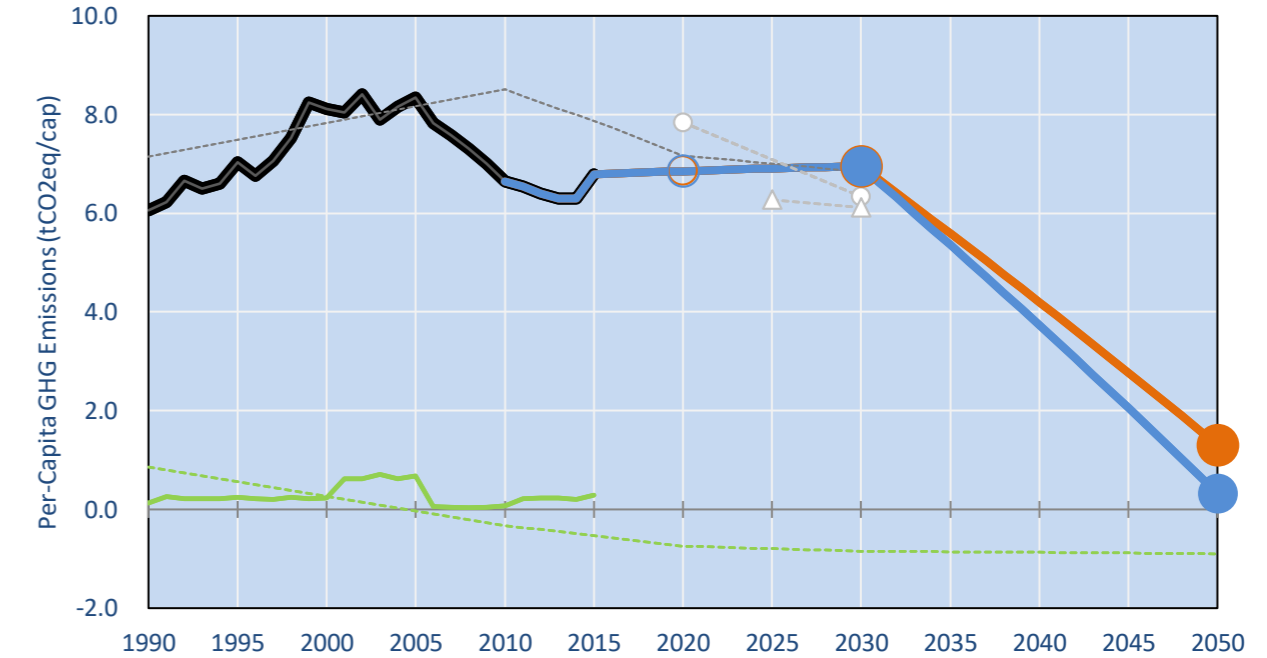
INDC Submitted: 6/03/2015

GHG Emissions

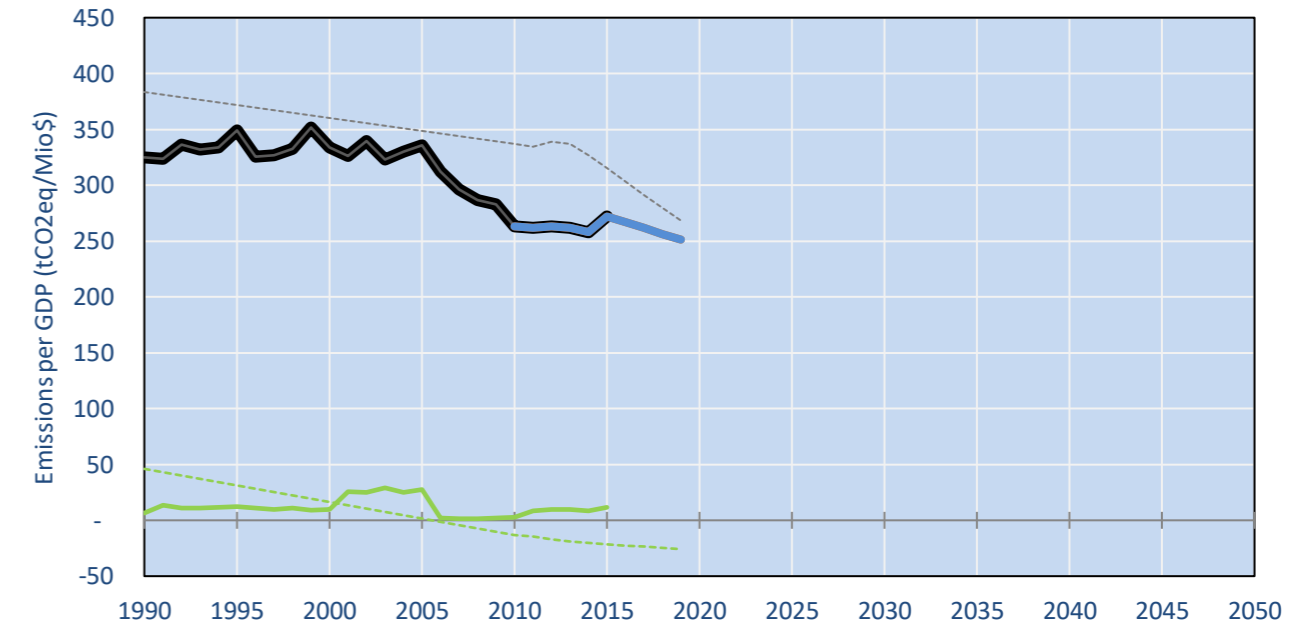


- Reference Total GHG excl. LULUCF
- Historical Covered Emissions, incl. LULUCF, if covered.
- LOW INDC Covered Emissions, incl. LULUCF if covered
- LOW INDC Covered + Non-Covered Emissions, excl. LULUCF
- HIGH INDC Covered Emissions, incl. LULUCF
- HIGH INDC Covered + Non-Covered Emissions, excl. LULUCF
- HIGH Cancun Pledges
- WM Total excl. LULUCF Projections
- WM LULUCF Projections
- Approx. 2030 EU MS target (-17% ESD + -43% ETS)
- Regional/Gas-specific BAU
- Not-covered GHG excl. LULUCF (Region Projection)
- Reference LULUCF Emissions
- LOW INDC Levels
- LOW INDC Covered Emissions, excl. LULUCF
- HIGH INDC Levels
- HIGH INDC Covered Emissions, excl. LULUCF
- LOW Cancun Pledges
- Approx. 2030 EU MS target (-17% ESD + -43% ETS)
- Regional/Gas-specific BAU

Per-Capita Emissions

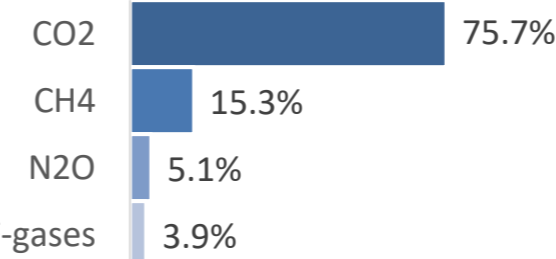


GHG Emissions per GDP

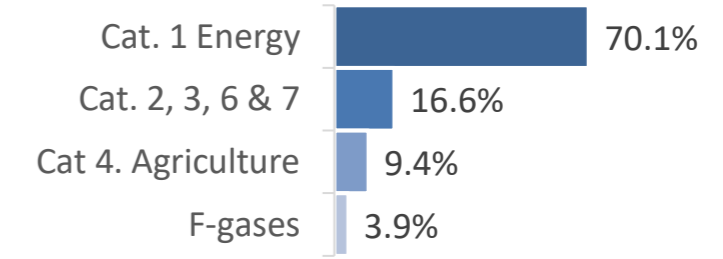


2015 Total GHG Emissions excl. LULUCF

By Gas:



By Sector:



GHG Emissions

	1990	2000	2005	2010	2015	2020	2025	2030
(MtCO ₂ eq/yr in GWP AR4)						low high	low high	low high
Assumed LULUCF Accounting Credits (-)/Debits (+)						4 - 4	6 - 6	6 - 6
NDC covered LULUCF Emissions								
NDC covered Emissions excl. LULUCF	60	83	87	70	70	70 70	69 69	68 68
Total GHG excl. LULUCF	60	83	87	70	70	70 70	69 69	68 68
Total GHG incl. LULUCF	61	86	95	71	73	62 62	61 61	60 60

Relative GHG Emissions

	1990	2000	2005	2010	2015	2020	2025	2030
Total excl. LULUCF						low high	low high	low high
Relative 1990	100%	139%	146%	117%	117%	116% 116%	115% 115%	114% 114%
Relative 2000	72%	100%	105%	84%	84%	84% 84%	83% 83%	82% 82%
Relative 2005	69%	95%	100%	80%	80%	80% 80%	79% 79%	78% 78%
Relative 2010	85%	119%	124%	100%	100%	99% 99%	98% 98%	97% 97%
Relative 2015	85%	119%	124%	100%	100%	99% 99%	98% 98%	97% 97%

Per-Capita Emissions

	1990	2000	2005	2010	2015	2020	2025	2030
Total excl. LULUCF						low high	low high	low high
Population (Mio)	10	10	10	11	10	10 10	10 10	10 10
Per-Capita Emissions (tCO ₂ eq/cap)	6.1	8.1	8.3	6.6	6.8	6.9 6.9	6.9 6.9	7.0 7.0
Relative 1990	100%	134%	138%	110%	112%	113% 113%	114% 114%	115% 115%
Relative 2000	75%	100%	103%	82%	84%	85% 85%	85% 85%	86% 86%
Relative 2005	73%	97%	100%	80%	81%	82% 82%	83% 83%	83% 83%
Relative 2010	91%	122%	126%	100%	102%	103% 103%	104% 104%	105% 105%
Relative 2015	89%	120%	123%	98%	100%	101% 101%	102% 102%	102% 102%

Data Sources:

Cat1_CO2 PRIMAPHIST17
Cat2367_CO2 PRIMAPHIST17
Cat4_CO2 PRIMAPHIST17
Cat5_CO2 PRIMAPHIST17
Cat1_CH4 PRIMAPHIST17
Cat2367_CH4 PRIMAPHIST17
Cat4_CH4 PRIMAPHIST17
Cat5_CH4 PRIMAPHIST17
Cat1_N2O PRIMAPHIST17
Cat2367_N2O PRIMAPHIST17
Cat4_N2O PRIMAPHIST17
Cat5_N2O PRIMAPHIST17
Cat0_HFCs PRIMAPHIST17
Cat0_PFCs PRIMAPHIST17
Cat0_SF6 PRIMAPHIST17
Population UN 2015 Population Projections MEDIUM
GDP IMF WEO 2015, PPP adjusted GDP, constant 2009 prices...
IPCC WG3 Scenario IMAGE | AMPERE2-550-FullTech-HST
PRIMAPHIST16 description: www.pik-potsdam.de/primap-live/primap-hist/
Gratefully acknowledged in particular: PRIMAP, CAIT, CDIAC, EDGAR, IPCC, IEA, UNEP Gap Team, AMPERE Team and comments on earlier versions, in particular by Giacomo Grassi. Errors and misjudgements are our own. Malte Meinshausen & Ryan Alexander; The "Fiji COP23" Edition was enabled through support via the BMUB project UM14 41 4060
This Factsheet is available at www.climatecollege.unimelb.edu.au/indc-factsheets. Check out as well: www.climateactiontracker.org, www.mitigation-contributions.org, cait.wri.org, infographics.pbl.nl/indc, live.primap.org, www.unep.org/climatechange/pledgepipeline, and our twitter feed @ClimateCollege
climatecollege.unimelb.edu.au
AUSTRALIAN-GERMAN CLIMATE & ENERGY COLLEGE

Various 'fair' contributions for a global 'least-cost' 2°C path (total incl. LULUCF):

2025 rel. 2010:		2030 rel. 2010:	
LEADER	#N/A	LEADER	#N/A
CDC	-4%	CDC	-16%
ECPC50	6%	ECPC50	17%
ECPC90	-12%	ECPC90	-18%
GDR	-88%	GDR	-111%
INDC HIGH	-14%	INDC HIGH	-15%
INDC LOW	-14%	INDC LOW	-15%



Shown fair contributions only indicative

"Fair" contributions for a global 'least-cost' 2°C track:

- LEADER
- CDC Common-but-diff. per-cap. convergence
- ECPC50 Eq. cum. Per-capita since 1950
- ECPC90 Eq. cum. Per-capita since 1990
- GDR Greenhouse Development Rights
- #N/A No available data