

# Papua New Guinea

Per-Capita Emissions in 2030 rel. 2015 (excl. LULUCF): **+17%**

NDC 2025

NDC 2030

2015 World Rank

2025 World Rank

2030 World Rank

Share of World Emissions excl. LULUCF (Rank):

0.0% #126

0.0% #121

0.0% #121

Per-Capita Emissions (tCO2eq/cap)

2.1t #149

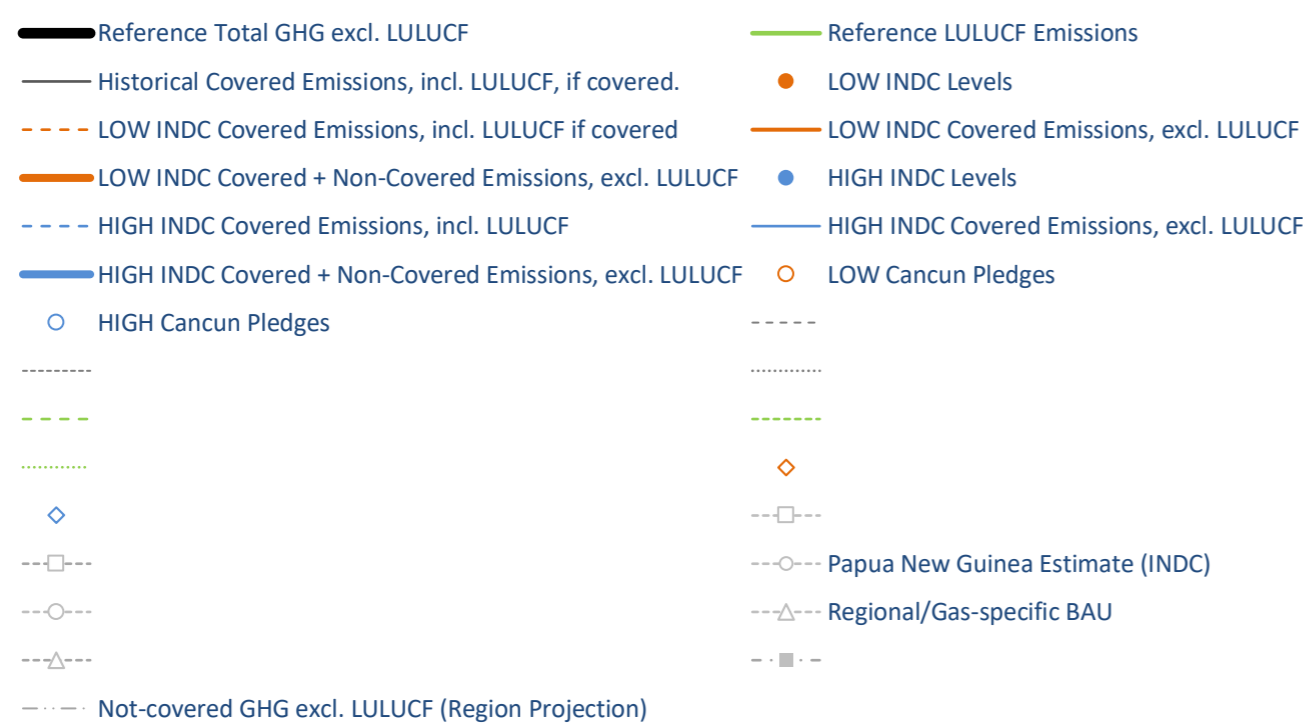
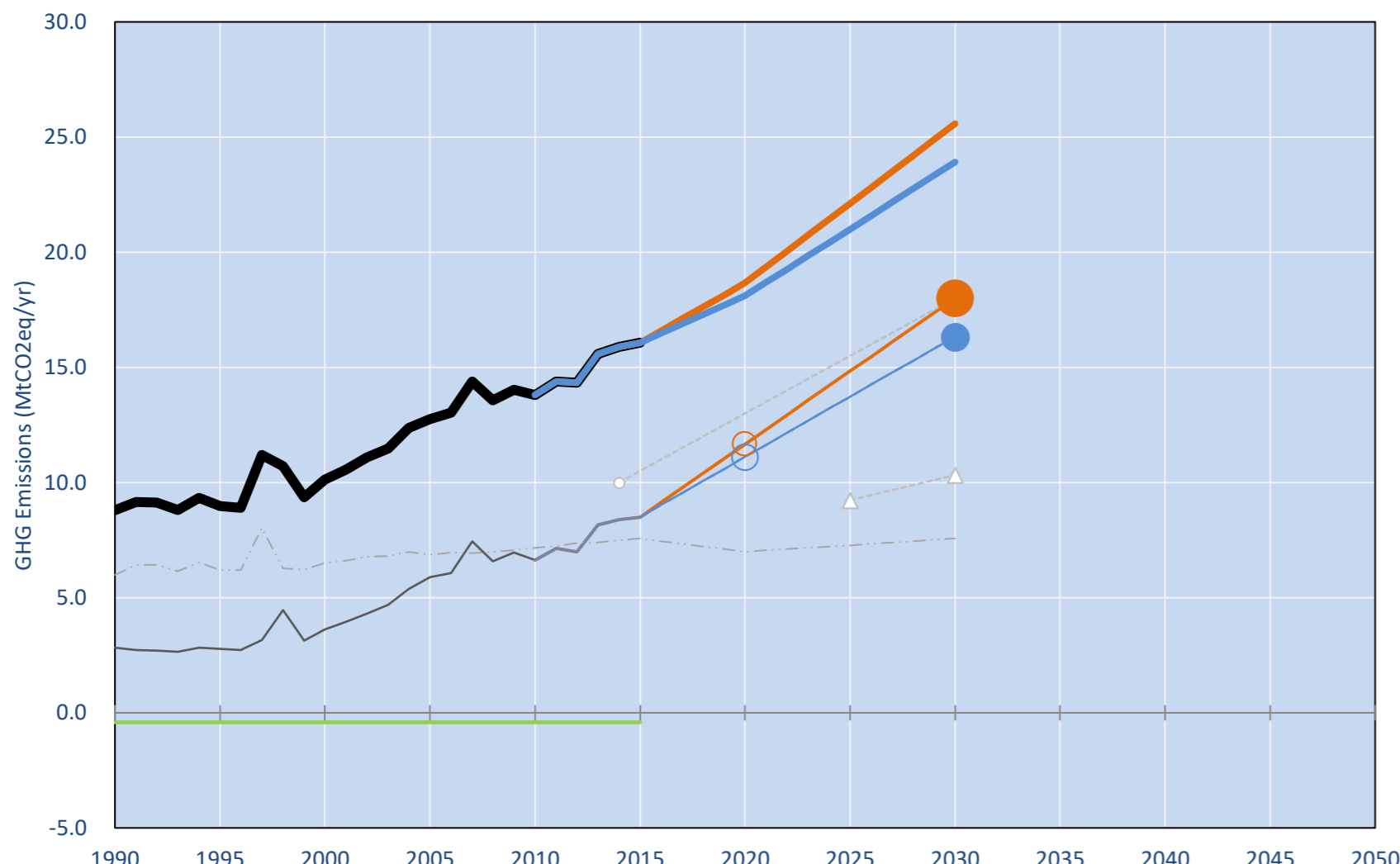
2.3t #140

2.5t #137

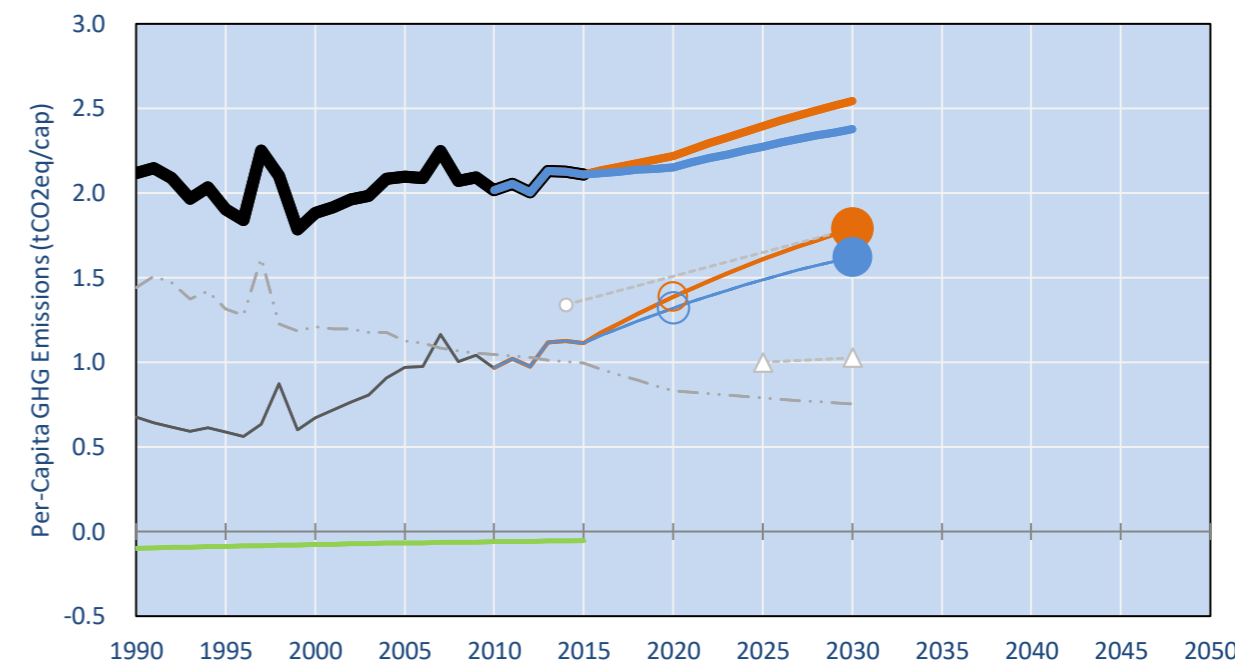
NDC: The implementation of policies and actions in the energy sector could reach a reduction of 18 Mt CO2 per year by 2030 pending on international support. (GWP SAR)

INDC Submitted: 30/09/2015

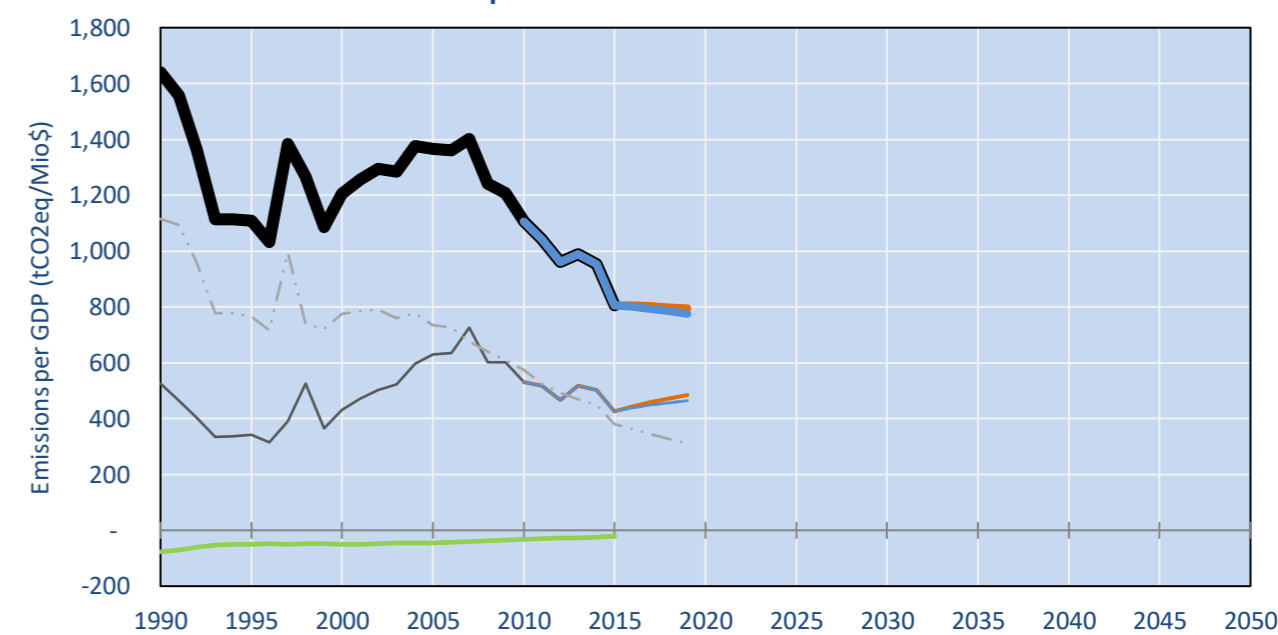
## GHG Emissions



## Per-Capita Emissions

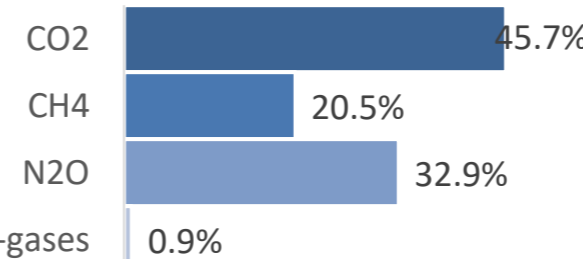


## GHG Emissions per GDP

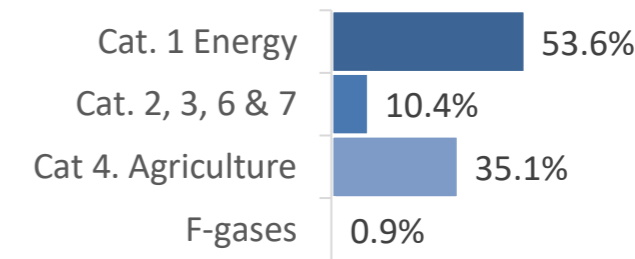


### 2015 Total GHG Emissions excl. LULUCF

By Gas:



By Sector:



## GHG Emissions

|  | 1990 | 2000 | 2005 | 2010 | 2015 | 2020 |      | 2025 |      | 2030 |      |
|--|------|------|------|------|------|------|------|------|------|------|------|
| (MtCO2eq/yr in GWP AR4)                          |      |      |      |      |      | low  | high | low  | high | low  | high |
| Assumed LULUCF Accounting Credits (-)/Debits (+) |      |      |      |      |      |      |      |      |      |      |      |
| NDC covered LULUCF Emissions                     |      |      |      |      |      |      |      |      |      |      |      |
| NDC covered Emissions excl. LULUCF               | 3    | 4    | 6    | 7    | 8    | 12   | 11   | 15   | 14   | 18   | 16   |
| Total GHG excl. LULUCF                           | 9    | 10   | 13   | 14   | 16   | 19   | 18   | 22   | 21   | 26   | 24   |
| Total GHG incl. LULUCF                           | 8    | 10   | 12   | 13   | 16   | 18   | 18   | 22   | 21   | 25   | 24   |

## Relative GHG Emissions

|                    | 1990 | 2000 | 2005 | 2010 | 2015 | 2020 |      | 2025 |      | 2030 |      |
|--------------------|------|------|------|------|------|------|------|------|------|------|------|
| Total excl. LULUCF |      |      |      |      |      | low  | high | low  | high | low  | high |
| Relative 1990      | 100% | 115% | 145% | 157% | 183% | 212% | 206% | 251% | 238% | 291% | 272% |
| Relative 2000      | 87%  | 100% | 126% | 136% | 159% | 184% | 179% | 218% | 207% | 253% | 236% |
| Relative 2005      | 69%  | 79%  | 100% | 108% | 126% | 146% | 142% | 173% | 165% | 200% | 187% |
| Relative 2010      | 64%  | 73%  | 92%  | 100% | 116% | 135% | 131% | 160% | 152% | 185% | 173% |
| Relative 2015      | 55%  | 63%  | 79%  | 86%  | 100% | 116% | 113% | 138% | 131% | 159% | 149% |

## Per-Capita Emissions

|                                   | 1990 | 2000 | 2005 | 2010 | 2015 | 2020 |      | 2025 |      | 2030 |      |
|-----------------------------------|------|------|------|------|------|------|------|------|------|------|------|
| Total excl. LULUCF                |      |      |      |      |      | low  | high | low  | high | low  | high |
| Population (Mio)                  | 4    | 5    | 6    | 7    | 8    | 8    | 8    | 9    | 9    | 10   | 10   |
| Per-Capita Emissions (tCO2eq/cap) | 2.1  | 1.9  | 2.1  | 2.0  | 2.1  | 2.2  | 2.2  | 2.4  | 2.3  | 2.5  | 2.4  |
| Relative 1990                     | 100% | 89%  | 99%  | 95%  | 100% | 105% | 102% | 113% | 107% | 120% | 112% |
| Relative 2000                     | 112% | 100% | 111% | 107% | 112% | 118% | 114% | 127% | 121% | 135% | 126% |
| Relative 2005                     | 101% | 90%  | 100% | 96%  | 101% | 106% | 103% | 114% | 109% | 121% | 113% |
| Relative 2010                     | 105% | 93%  | 104% | 100% | 105% | 110% | 107% | 119% | 113% | 126% | 118% |
| Relative 2015                     | 100% | 89%  | 99%  | 96%  | 100% | 105% | 102% | 114% | 108% | 121% | 113% |

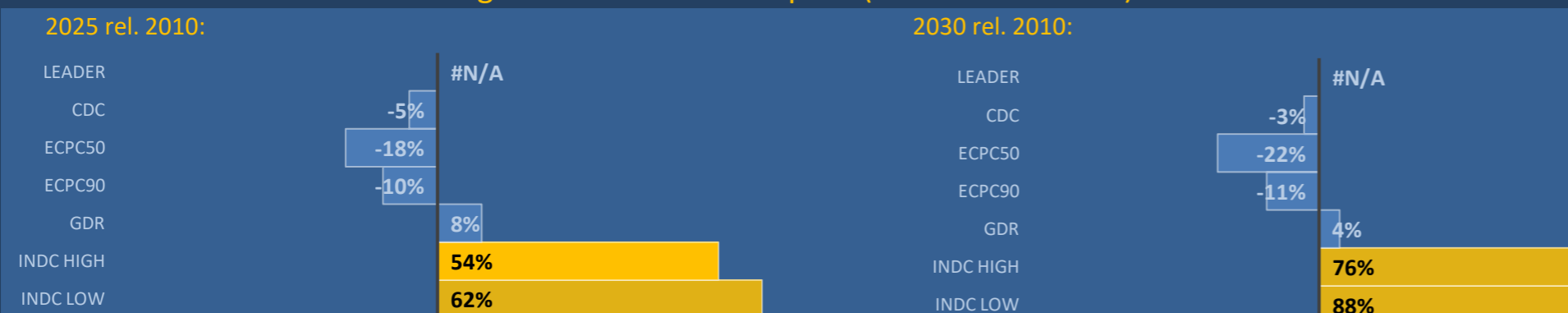
## Data Sources:

|             |  |                   |                                    |
|-------------|--|-------------------|------------------------------------|
| Cat1_CO2    | PRIMAPHIST17   | Cat5A1_CO2        | UNFCCC CRF + Nat. Comms.           |
| Cat2367_CO2 | PRIMAPHIST17   | Cat5A2_CO2        | UNFCCC CRF + Nat. Comms.           |
| Cat4_CO2    | PRIMAPHIST17   | Cat5LtoNonFL_CO2  | UNFCCC CRF + Nat. Comms.           |
| Cat5_CO2    | PRIMAPHIST17   | Cat5GMCMWMM_C     | UNFCCC CRF                         |
| Cat1_CH4    | PRIMAPHIST17   | Cat5A1ForestFires | UNFCCC Cat5 + EDGAR(IPCC Database) |
| Cat2367_CH4 | PRIMAPHIST17   | Cat5A1HWP_CO2     | UNFCCC CRF + Nat. Comms.           |
| Cat4_CH4    | PRIMAPHIST17   | Cat5bisA_CO2      | UNFCCC CRF + NATCOMM.              |
| Cat5_CH4    | PRIMAPHIST17   | Cat5bisB_CO2      | UNFCCC CRF + NATCOMM.              |
| Cat1_N2O    | PRIMAPHIST17   | Cat5bisC_CO2      | UNFCCC CRF + NATCOMM.              |
| Cat2367_N2O | PRIMAPHIST17   | Cat5bisD_CO2      | UNFCCC CRF + NATCOMM.              |
| Cat4_N2O    | PRIMAPHIST17   | Cat5bisE_CO2      | UNFCCC CRF + NATCOMM.              |
| Cat5_N2O    | PRIMAPHIST17   | PRO_WM_Cat5_G     | UNFCCC Annex I Reports             |
| Cat0_HFCs   | PRIMAPHIST17   | Metric            | GWP AR4                            |
| Cat0_PFCs   | PRIMAPHIST17   |                   |                                    |
| Cat0_SF6    | PRIMAPHIST17   |                   |                                    |
| Population  | UN 2015 Population Projections MEDIUM  |                   |                                    |
| GDP         | IMF WEO 2015, PPP adjusted GDP, constant 2009 prices...  |                   |                                    |
|             | IPCC WG3 Scenario IMAGE   AMPERE2-550-FullTech-HST   |                   |                                    |
|             | PRIMAPHIST16 description: www.pik-potsdam.de/primap-live/primap-hist/  |                   |                                    |
|             | Gratefully acknowledged in particular: PRIMAP, CAIT, CDIAC, EDGAR, IPCC, IEA, UNEP GAP Team, AMPERE Team and comments on earlier versions, in particular by Giacomo Grassi. Errors and misjudgements are our own. Malte Meinshausen & Ryan Alexander; The "Fiji COP23" Edition was enabled through support via the BMUB project UM14 41 4060 |                   |                                    |
|             | This Factsheet is available at www.climatecollege.unimelb.edu.au/indc-factsheets. Check out as well: www.climateactiontracker.org, www.mitigation-contributions.org, cait.wri.org, infographics.pbl.nl/indc, live.primap.org, www.unep.org/climatechange/pledgepipeline, and our twitter feed @ClimateCollege                                |                   |                                    |

climatecollege.unimelb.edu.au



## Various 'fair' contributions for a global 'least-cost' 2°C path (total incl. LULUCF):



## More info on www.mitigation-contributions.org

Shown fair contributions only indicative  
"Fair" contributions for a global 'least-cost' 2°C track:  
LEADER Leader  
CDC Common-but-diff. per-cap. convergence  
ECPC50 Eq. cum. Per-capita since 1950  
ECPC90 Eq. cum. Per-capita since 1990  
GDR Greenhouse Development Rights  
#N/A No available data