

Palau

Per-Capita Emissions in 2030 rel. 2015 (excl. LULUCF):



-41%

NDC 2025

NDC 2030

2015 World Rank

2025 World Rank

2030 World Rank

-22% rel.2005

Share of World Emissions excl. LULUCF (Rank):

0.0% #185

0.0% #186

0.0% #188

Per-Capita Emissions (tCO2eq/cap)

12.1t #25

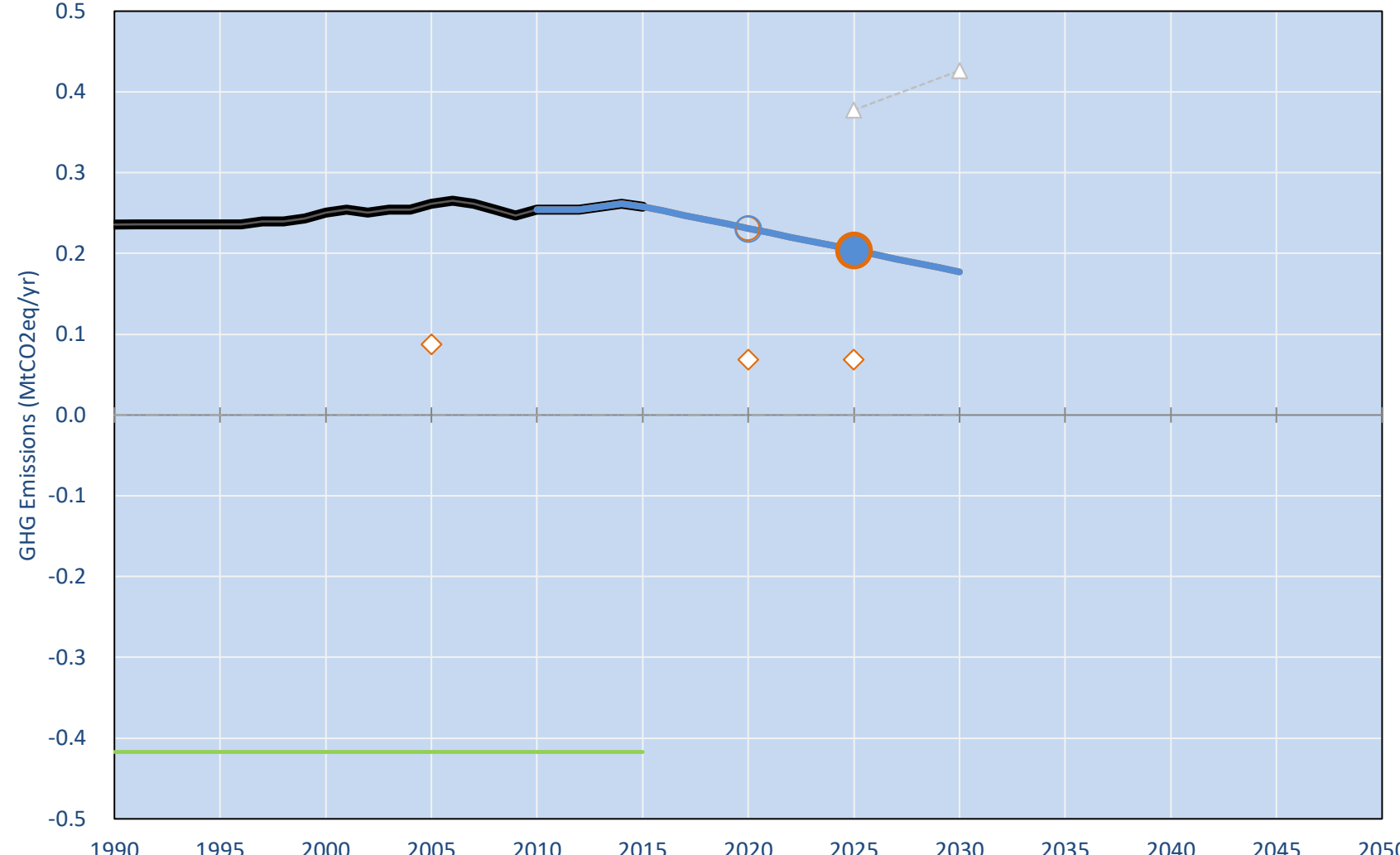
8.6t #43

7.1t #58

NDC: 22% reduction of energy sector emissions below 2005 levels by 2025.. (GWP unclear)

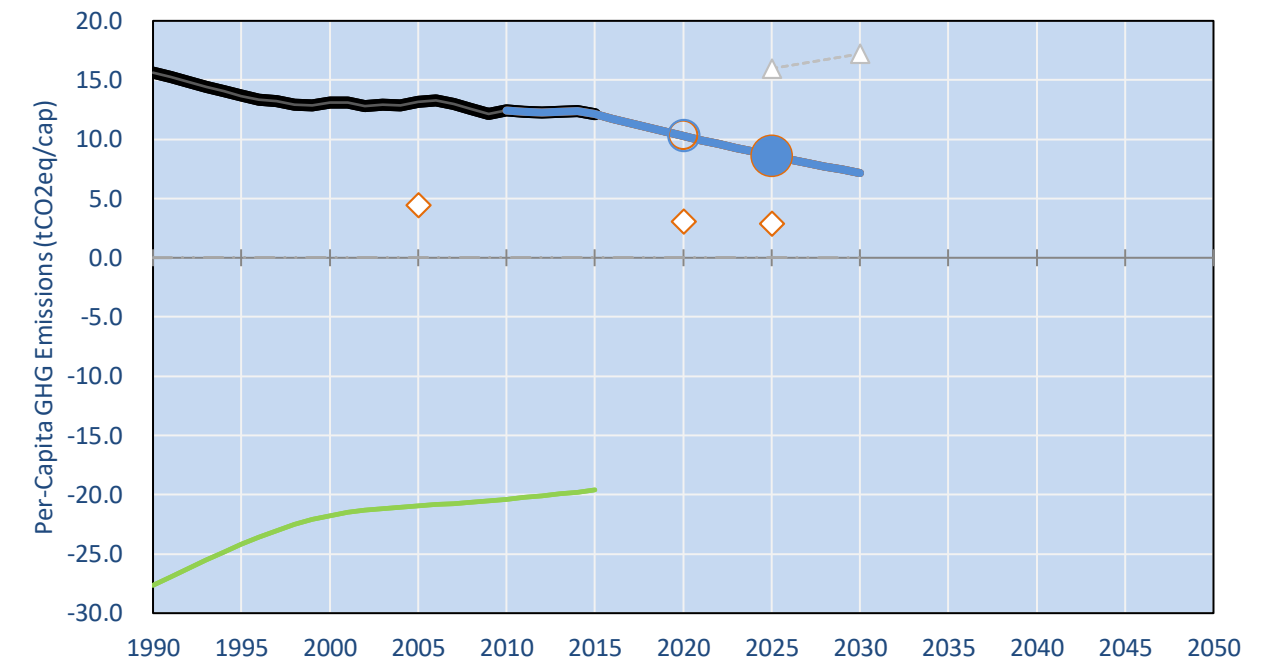
INDC Submitted: 28/11/2015

GHG Emissions

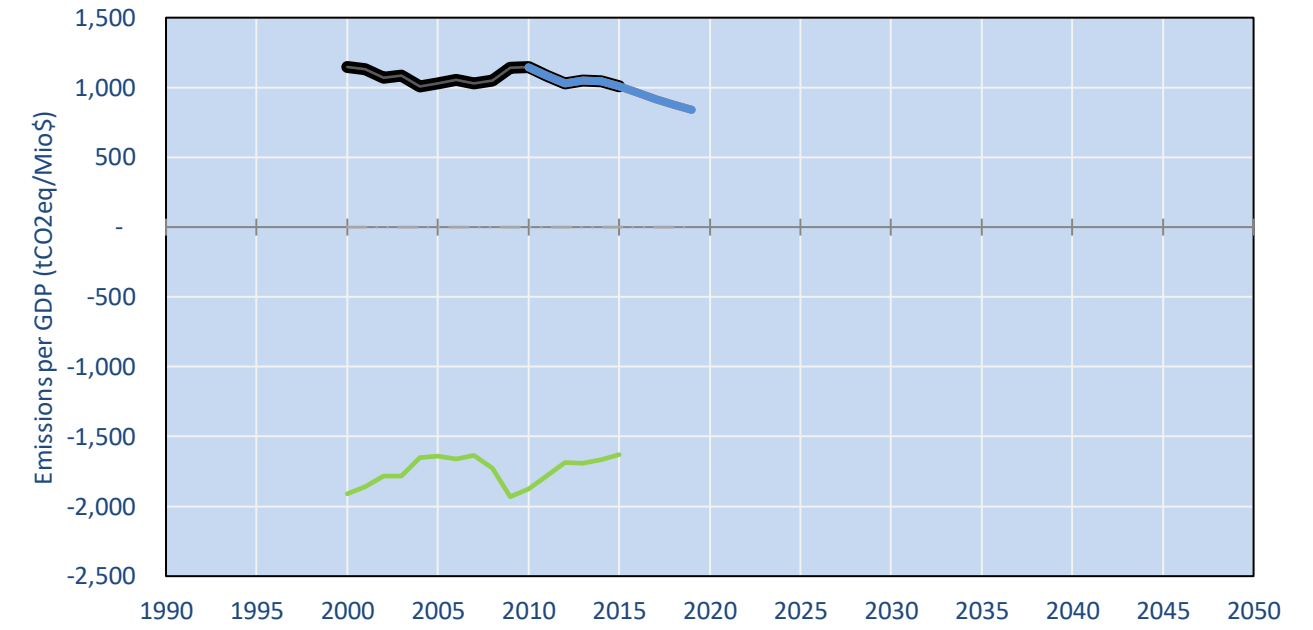


- Reference Total GHG excl. LULUCF
- Historical Covered Emissions, incl. LULUCF, if covered.
- LOW INDC Covered Emissions, incl. LULUCF if covered
- LOW INDC Covered + Non-Covered Emissions, excl. LULUCF
- HIGH INDC Covered Emissions, incl. LULUCF
- HIGH INDC Covered + Non-Covered Emissions, excl. LULUCF
- HIGH Cancun Pledges
- Reference LULUCF Emissions
- LOW INDC Levels
- LOW INDC Covered Emissions, excl. LULUCF
- HIGH INDC Levels
- HIGH INDC Covered Emissions, excl. LULUCF
- LOW Cancun Pledges
- Palau INDC
- Regional/Gas-specific BAU
- Not-covered GHG excl. LULUCF (Region Projection)

Per-Capita Emissions



GHG Emissions per GDP



2015 Total GHG Emissions excl. LULUCF

By Gas:

CO2 99.5%
CH4 0.5%
N2O 0.0%
F-gases 0.0%

By Sector:

Cat. 1 Energy 99.5%
Cat. 2, 3, 6 & 7 0.5%
Cat 4. Agriculture 0.0%
F-gases 0.0%

GHG Emissions

	1990	2000	2005	2010	2015	2020	2025	2030
(MtCO2eq/yr in GWP SAR)						low high	low high	low high
Assumed LULUCF Accounting Credits (-)/Debits (+)								
NDC covered LULUCF Emissions								
NDC covered Emissions excl. LULUCF	0	0	0	0	0	0	0	0
Total GHG excl. LULUCF	0	0	0	0	0	0	0	0
Total GHG incl. LULUCF	0	0	0	0	0	0	0	0

Relative GHG Emissions

	1990	2000	2005	2010	2015	2020	2025	2030
Total excl. LULUCF						low high	low high	low high
Relative 1990	100%	106%	111%	108%	109%	98% 98%	87% 87%	75% 75%
Relative 2000	94%	100%	104%	101%	103%	92% 92%	81% 81%	71% 71%
Relative 2005	90%	96%	100%	97%	99%	88% 88%	78% 78%	68% 68%
Relative 2010	93%	99%	103%	100%	101%	91% 91%	80% 80%	70% 70%
Relative 2015	91%	97%	101%	99%	100%	90% 90%	79% 79%	69% 69%

Per-Capita Emissions

	1990	2000	2005	2010	2015	2020	2025	2030
Total excl. LULUCF						low high	low high	low high
Population (Mio)	0	0	0	0	0	0	0	0
Per-Capita Emissions (tCO2eq/cap)	15.6	13.1	13.1	12.4	12.1	10.3 10.3	8.6 8.6	7.1 7.1
Relative 1990	100%	84%	84%	80%	78%	66% 66%	55% 55%	46% 46%
Relative 2000	120%	100%	101%	95%	93%	79% 79%	66% 66%	55% 55%
Relative 2005	119%	99%	100%	95%	92%	78% 78%	66% 66%	54% 54%
Relative 2010	126%	105%	106%	100%	98%	83% 83%	69% 69%	58% 58%
Relative 2015	129%	108%	108%	103%	100%	85% 85%	71% 71%	59% 59%

Data Sources:

Cat1_CO2 PRIMAPHIST17
Cat2367_CO2 PRIMAPHIST17
Cat4_CO2 PRIMAPHIST17
Cat5_CO2 PRIMAPHIST17
Cat1_CH4 PRIMAPHIST17
Cat2367_CH4 PRIMAPHIST17
Cat4_CH4 PRIMAPHIST17
Cat5_CH4 PRIMAPHIST17
Cat1_N2O PRIMAPHIST17
Cat2367_N2O PRIMAPHIST17
Cat4_N2O PRIMAPHIST17
Cat5_N2O PRIMAPHIST17
Cat0_HFCs PRIMAPHIST17
Cat0_PFCs PRIMAPHIST17
Cat0_SF6 PRIMAPHIST17
Population UN 2015 Population Projections MEDIUM
GDP IMF WEO 2015, PPP adjusted GDP, constant 2009 prices...
IPCC WG3 Scenario IMAGE | AMPERE2-550-FullTech-HST
PRIMAPHIST16 description: www.pik-potsdam.de/primap-live/primap-hist/
Gratefully acknowledged in particular: PRIMAP, CAIT, CDIAC, EDGAR, IPCC, IEA, UNEP GAP Team, AMPERE Team and comments on earlier versions, in particular by Giacomo Grassi. Errors and misjudgements are our own. Malte Meinshausen & Ryan Alexander; The "Fiji COP23" Edition was enabled through support via the BMUB project UM14 41 4060
This Factsheet is available at www.climatecollege.unimelb.edu.au/indc-factsheets. Check out as well: www.climateactiontracker.org, www.mitigation-contributions.org, cait.wri.org, infographics.pbl.nl/indc, live.primap.org, www.unep.org/climatechange/pledgepipeline, and our twitter feed @ClimateCollege
climatecollege.unimelb.edu.au
AUSTRALIAN-GERMAN CLIMATE & ENERGY COLLEGE

Various 'fair' contributions for a global 'least-cost' 2°C path (total incl. LULUCF):

2025 rel. 2010:	2030 rel. 2010:
LEADER	#N/A
CDC	#N/A
ECPC50	#N/A
ECPC90	#N/A
GDR	#N/A
INDC HIGH	#N/A
INDC LOW	#N/A

More info on www.mitigation-contributions.org

No results shown, as 2010 total incl. LULUCF emissions below zero
"Fair" contributions for a global 'least-cost' 2°C track:
LEADER Leader
CDC Common-but-diff. per-cap. convergence
ECPC50 Eq. cum. Per-capita since 1950
ECPC90 Eq. cum. Per-capita since 1990
GDR Greenhouse Development Rights
#N/A No available data