

Paris Agreement ratified on: 22/04/2016

Palau

Per-Capita Emissions in 2030 rel. 2015 (excl. LULUCF):



-41%

NDC 2025

NDC 2030

2015 World Rank

2025 World Rank

2030 World Rank

-22% rel.2005

Share of World Emissions excl. LULUCF (Rank):

0.0% #185

0.0% #187

0.0% #188

Per-Capita Emissions (tCO2eq/cap)

12.1t #28

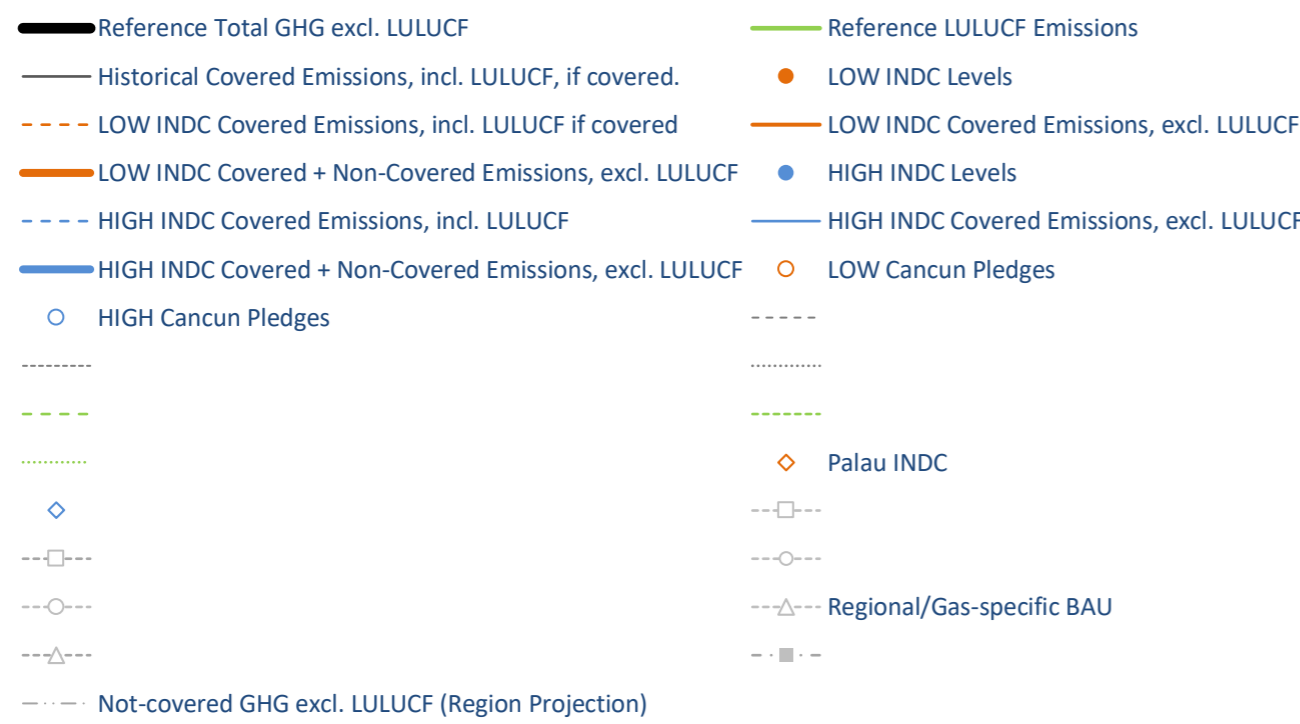
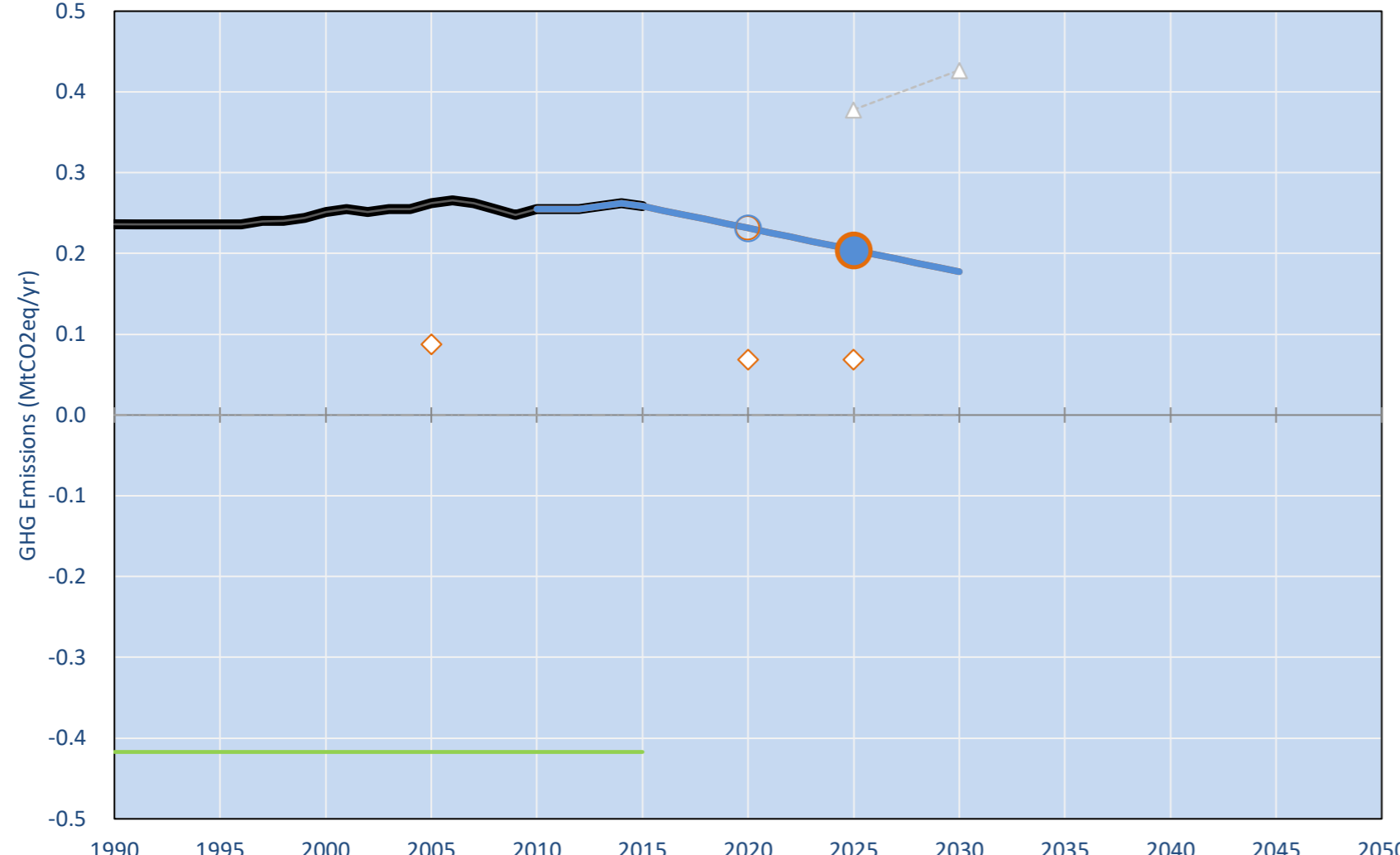
8.6t #43

7.2t #57

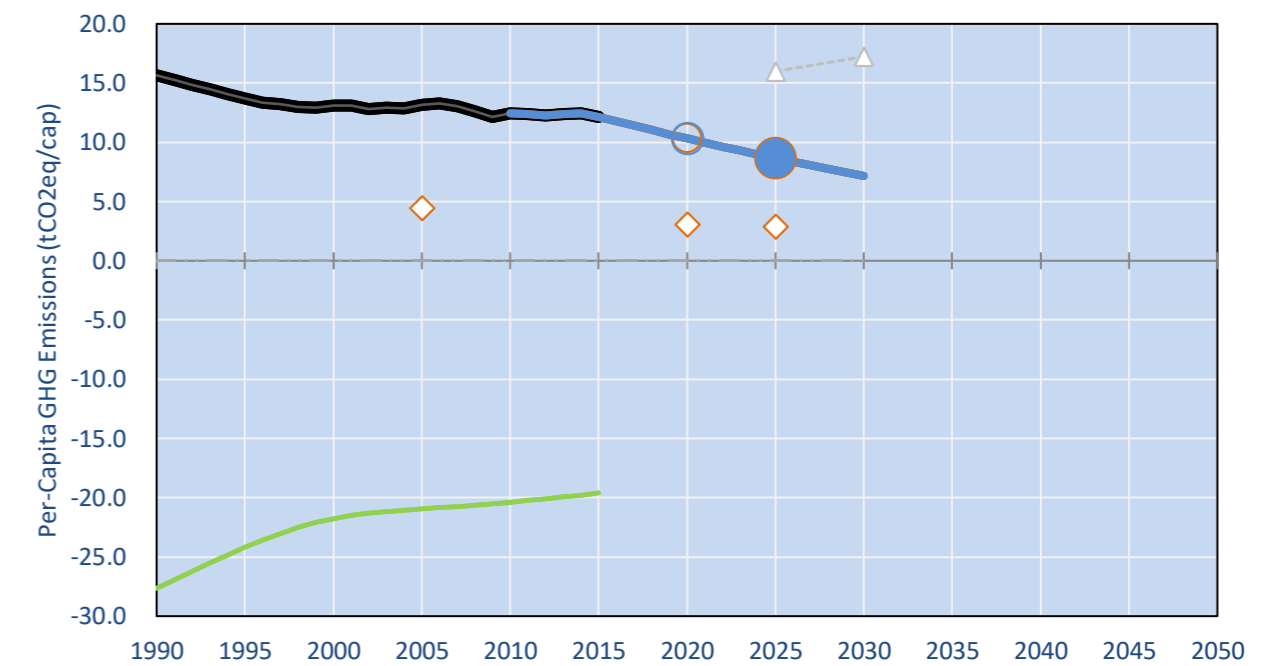
NDC: 22% reduction of energy sector emissions below 2005 levels by 2025.. (GWP unclear)

INDC Submitted: 28/11/2015

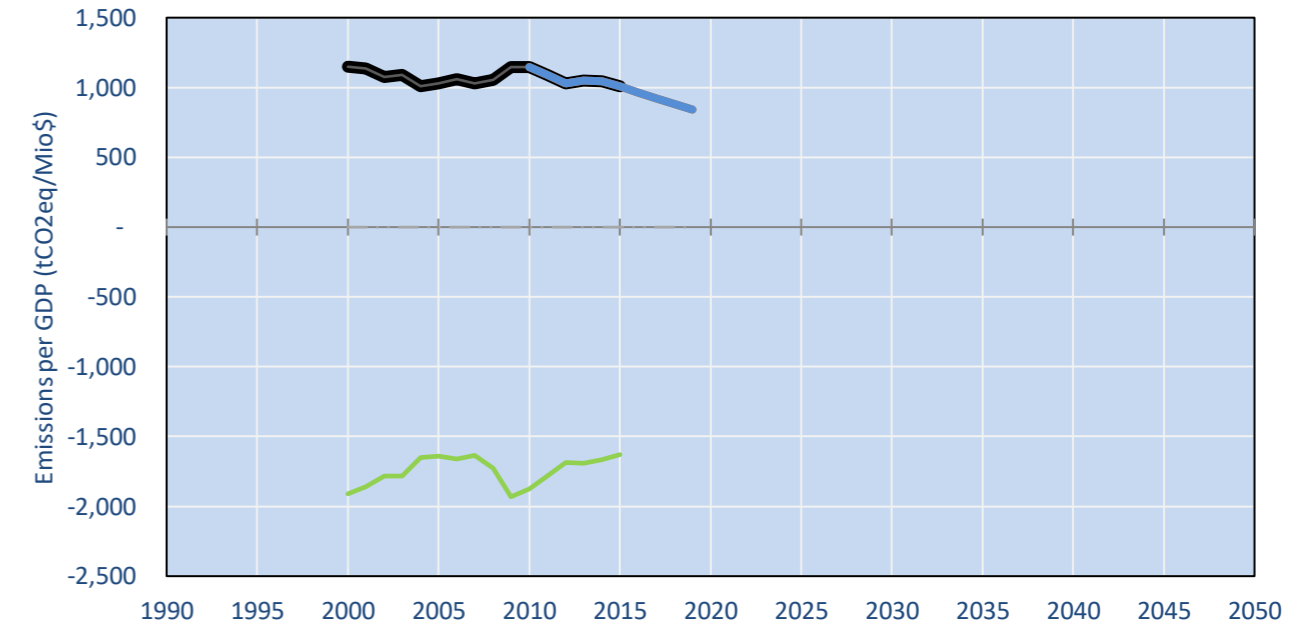
GHG Emissions



Per-Capita Emissions



GHG Emissions per GDP



2015 Total GHG Emissions excl. LULUCF

By Gas:

| | |
|---------|-------|
| CO2 | 99.3% |
| CH4 | 0.7% |
| N2O | 0.0% |
| F-gases | 0.0% |

By Sector:

| | |
|--------------------|-------|
| Cat. 1 Energy | 99.3% |
| Cat. 2, 3, 6 & 7 | 0.7% |
| Cat 4. Agriculture | 0.0% |
| F-gases | 0.0% |

GHG Emissions

| | 1990 | 2000 | 2005 | 2010 | 2015 | 2020 | 2025 | 2030 |
|--|------|------|------|------|------|----------|----------|----------|
| (MtCO2eq/yr in GWP AR5) | | | | | | low high | low high | low high |
| Assumed LULUCF Accounting Credits (-)/Debits (+) | | | | | | | | |
| NDC covered LULUCF Emissions | | | | | | | | |
| NDC covered Emissions excl. LULUCF | 0 | 0 | 0 | 0 | 0 | 0 | 0 | 0 |
| Total GHG excl. LULUCF | 0 | 0 | 0 | 0 | 0 | 0 | 0 | 0 |
| Total GHG incl. LULUCF | 0 | 0 | 0 | 0 | 0 | 0 | 0 | 0 |

Relative GHG Emissions

| | 1990 | 2000 | 2005 | 2010 | 2015 | 2020 | 2025 | 2030 |
|--------------------|------|------|------|------|------|----------|----------|----------|
| Total excl. LULUCF | | | | | | low high | low high | low high |
| Relative 1990 | 100% | 106% | 111% | 108% | 109% | 98% | 87% | 75% |
| Relative 2000 | 94% | 100% | 104% | 101% | 103% | 92% | 81% | 71% |
| Relative 2005 | 90% | 96% | 100% | 97% | 99% | 88% | 78% | 68% |
| Relative 2010 | 93% | 99% | 103% | 100% | 101% | 91% | 80% | 70% |
| Relative 2015 | 91% | 97% | 101% | 99% | 100% | 90% | 79% | 69% |

Per-Capita Emissions

| | 1990 | 2000 | 2005 | 2010 | 2015 | 2020 | 2025 | 2030 |
|-----------------------------------|------|------|------|------|------|----------|----------|----------|
| Total excl. LULUCF | | | | | | low high | low high | low high |
| Population (Mio) | 0 | 0 | 0 | 0 | 0 | 0 | 0 | 0 |
| Per-Capita Emissions (tCO2eq/cap) | 15.7 | 13.1 | 13.2 | 12.4 | 12.1 | 10.3 | 8.6 | 7.2 |
| Relative 1990 | 100% | 84% | 84% | 80% | 78% | 66% | 55% | 46% |
| Relative 2000 | 120% | 100% | 101% | 95% | 93% | 79% | 66% | 55% |
| Relative 2005 | 119% | 99% | 100% | 95% | 92% | 78% | 66% | 54% |
| Relative 2010 | 126% | 105% | 106% | 100% | 98% | 83% | 69% | 58% |
| Relative 2015 | 129% | 108% | 108% | 103% | 100% | 85% | 71% | 59% |

Data Sources:

| | | | |
|---|---|-------------------|------------------------------------|
| Cat1_CO2 | PRIMAPHIST17 | Cat5A1_CO2 | UNFCCC CRF + Nat. Comms. |
| Cat2367_CO2 | PRIMAPHIST17 | Cat5A2_CO2 | UNFCCC CRF + Nat. Comms. |
| Cat4_CO2 | PRIMAPHIST17 | Cat5LtoNonFL_CO2 | UNFCCC CRF + Nat. Comms. |
| Cat5_CO2 | PRIMAPHIST17 | Cat5GCMCMWM_C | UNFCCC CRF |
| Cat1_CH4 | PRIMAPHIST17 | Cat5A1ForestFires | UNFCCC Cat5 + EDGAR(IPCC Database) |
| Cat2367_CH4 | PRIMAPHIST17 | Cat5A1HWP_CO2 | UNFCCC CRF + Nat. Comms. |
| Cat4_CH4 | PRIMAPHIST17 | Cat5bisA_CO2 | UNFCCC CRF + NATCOMM. |
| Cat5_CH4 | PRIMAPHIST17 | Cat5bisB_CO2 | UNFCCC CRF + NATCOMM. |
| Cat1_N2O | PRIMAPHIST17 | Cat5bisC_CO2 | UNFCCC CRF + NATCOMM. |
| Cat2367_N2O | PRIMAPHIST17 | Cat5bisD_CO2 | UNFCCC CRF + NATCOMM. |
| Cat4_N2O | PRIMAPHIST17 | Cat5bisE_CO2 | UNFCCC CRF + NATCOMM. |
| Cat5_N2O | PRIMAPHIST17 | PRO_WM_Cat5_G | UNFCCC Annex I Reports |
| Cat0_HFCs | PRIMAPHIST17 | Metric | GWP AR5 |
| Cat0_PFCs | PRIMAPHIST17 | | |
| Cat0_SF6 | PRIMAPHIST17 | | |
| Population | UN 2015 Population Projections MEDIUM | | |
| GDP | IMF WEO 2015, PPP adjusted GDP, constant 2009 prices... | | |
| IPCC WG3 Scenario | IMAGE AMPERE2-550-FullTech-HST | | |
| PRIMAPHIST16 description: | www.pik-potsdam.de/primap-live/primap-hist/ | | |
| Gratefully acknowledged in particular: PRIMAP, CAIT, CDIAC, EDGAR, IPCC, IEA, UNEP GAP Team, AMPERE Team and comments on earlier versions, in particular by Giacomo Grassi. Errors and misjudgements are our own. Malte Meinshausen & Ryan Alexander; The "Fiji COP23" Edition was enabled through support via the BMUB project UM14 41 4060 | | | |
| This Factsheet is available at www.climatecollege.unimelb.edu.au/indc-factsheets . Check out as well: www.climateactiontracker.org , www.mitigation-contributions.org , cait.wri.org , infographics.pbl.nl/indc , live.primap.org , www.unep.org/climatechange/pledgepipeline , and our twitter feed @ClimateCollege | | | |
| climatecollege.unimelb.edu.au | | | |

Meinshausen, Alexander et al., www.climatecollege.unimelb.edu.au/indc-factsheets, The University of Melbourne



Various 'fair' contributions for a global 'least-cost' 2°C path (total incl. LULUCF):

| 2025 rel. 2010: | 2030 rel. 2010: |
|-----------------|-----------------|
| LEADER | #N/A |
| CDC | #N/A |
| ECPC50 | #N/A |
| ECPC90 | #N/A |
| GDR | #N/A |
| INDC HIGH | #N/A |
| INDC LOW | #N/A |

More info on www.mitigation-contributions.org

No results shown, as 2010 total incl. LULUCF emissions below zero
"Fair" contributions for a global 'least-cost' 2°C track:
LEADER Leader
CDC Common-but-diff. per-cap. convergence
ECPC50 Eq. cum. Per-capita since 1950
ECPC90 Eq. cum. Per-capita since 1990
GDR Greenhouse Development Rights
#N/A No available data