

Paris Agreement ratified on: 22/04/2016

# Palau

Per-Capita Emissions in 2030 rel. 2015 (excl. LULUCF):



**-41%**

NDC 2025

NDC 2030

2015 World Rank

2025 World Rank

2030 World Rank

-22% rel.2005

Share of World Emissions excl. LULUCF (Rank):

0.0% #185

0.0% #187

0.0% #188

Per-Capita Emissions (tCO2eq/cap)

12.1t #26

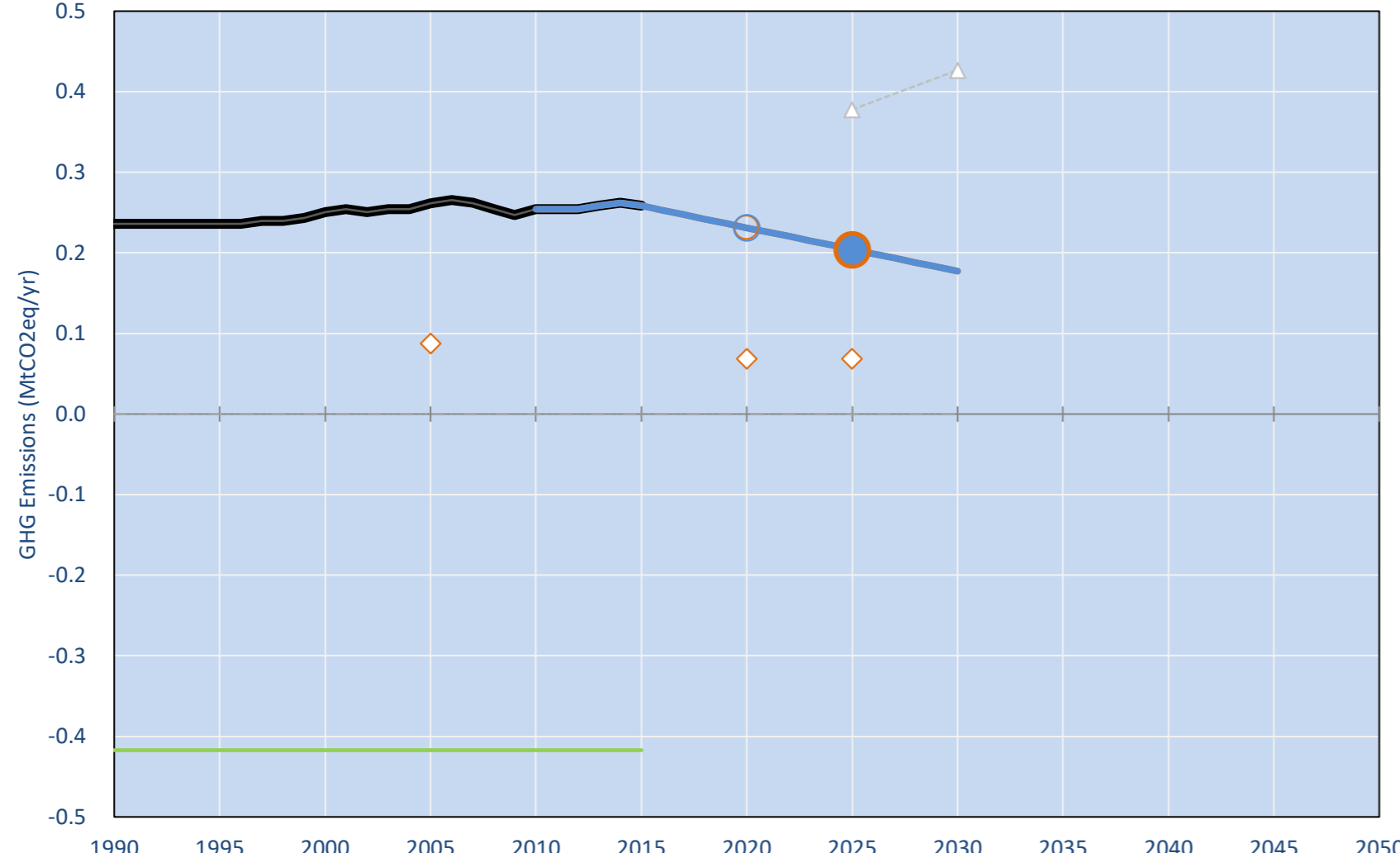
8.6t #46

7.2t #59

NDC: 22% reduction of energy sector emissions below 2005 levels by 2025.. (GWP unclear)

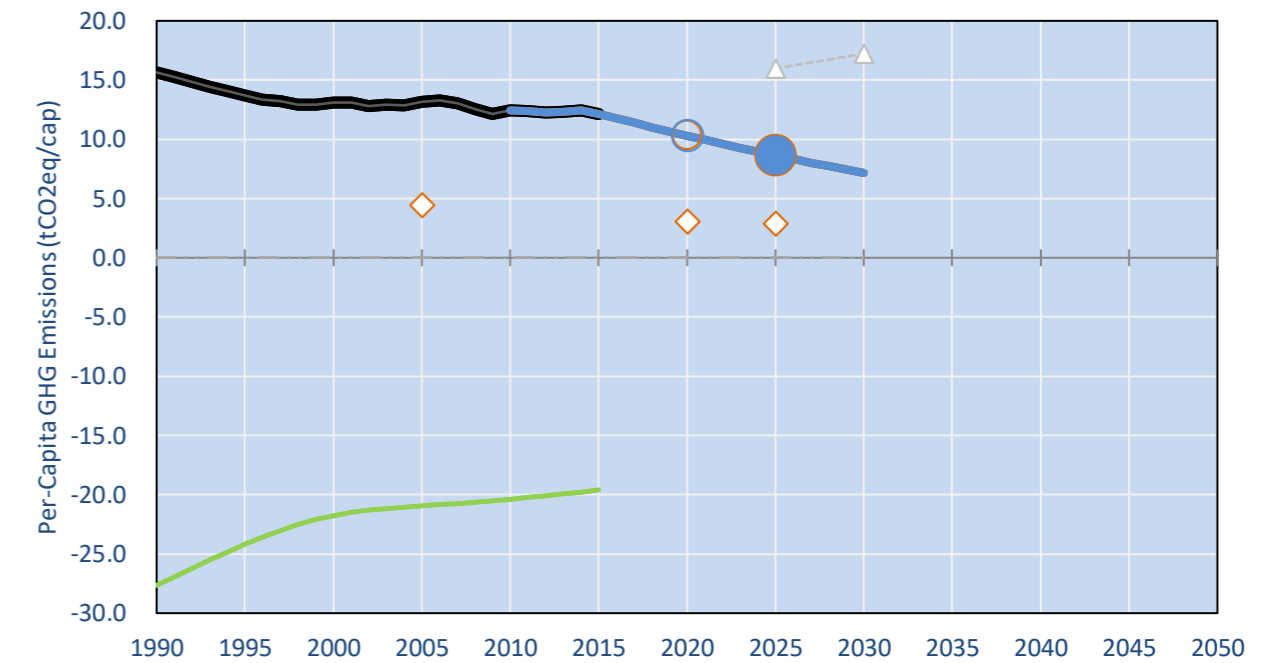
INDC Submitted: 28/11/2015

## GHG Emissions

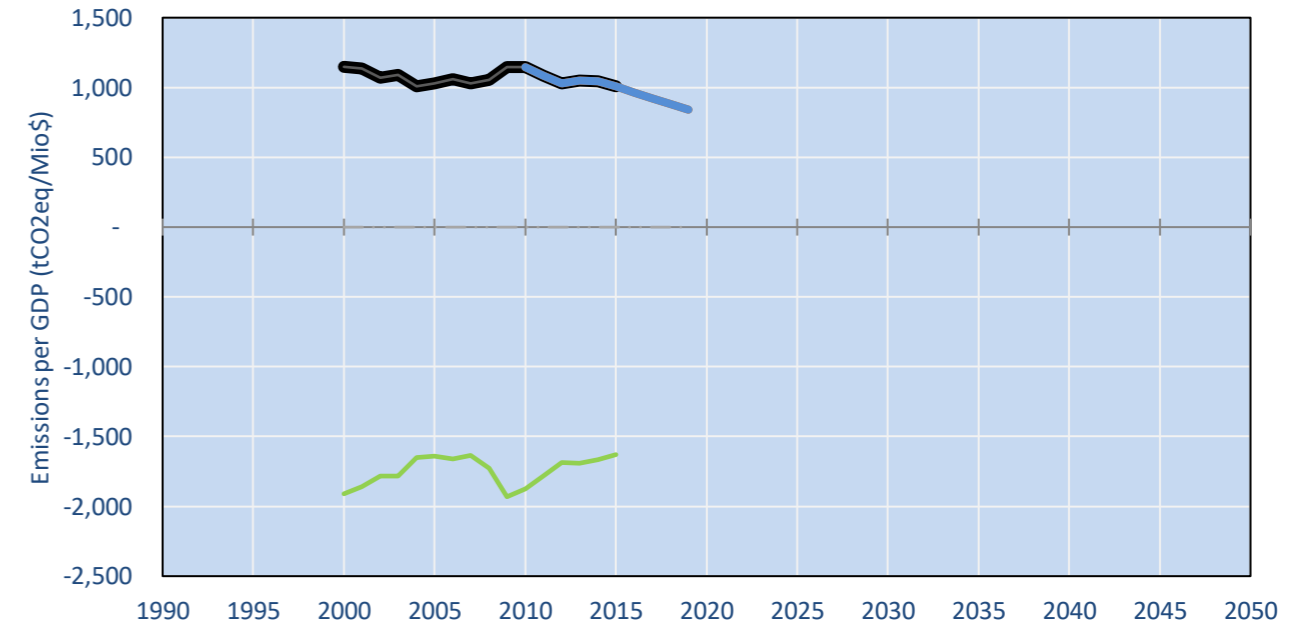


- Reference Total GHG excl. LULUCF
- Historical Covered Emissions, incl. LULUCF, if covered.
- LOW INDC Covered Emissions, incl. LULUCF if covered
- LOW INDC Covered + Non-Covered Emissions, excl. LULUCF
- HIGH INDC Covered Emissions, incl. LULUCF
- HIGH INDC Covered + Non-Covered Emissions, excl. LULUCF
- HIGH Cancun Pledges
- Reference LULUCF Emissions
- LOW INDC Levels
- LOW INDC Covered Emissions, excl. LULUCF
- HIGH INDC Levels
- HIGH INDC Covered Emissions, excl. LULUCF
- LOW Cancun Pledges
- Palau INDC
- Regional/Gas-specific BAU
- Not-covered GHG excl. LULUCF (Region Projection)

## Per-Capita Emissions



## GHG Emissions per GDP



## 2015 Total GHG Emissions excl. LULUCF

By Gas:

CO2	99.4%
CH4	0.6%
N2O	0.0%
F-gases	0.0%

By Sector:

Cat. 1 Energy	99.4%
Cat. 2, 3, 6 & 7	0.6%
Cat 4. Agriculture	0.0%
F-gases	0.0%

## GHG Emissions

	1990	2000	2005	2010	2015	2020	2025	2030	
(MtCO2eq/yr in GWP AR4)						low	high	low	high
Assumed LULUCF Accounting Credits (-)/Debits (+)									
NDC covered LULUCF Emissions									
NDC covered Emissions excl. LULUCF	0	0	0	0	0	0	0	0	0
Total GHG excl. LULUCF	0	0	0	0	0	0	0	0	0
Total GHG incl. LULUCF	0	0	0	0	0	0	0	0	0

## Relative GHG Emissions

	1990	2000	2005	2010	2015	2020	2025	2030	
Total excl. LULUCF						low	high	low	high
Relative 1990	100%	106%	111%	108%	109%	98%	98%	87%	87%
Relative 2000	94%	100%	104%	101%	103%	92%	92%	81%	81%
Relative 2005	90%	96%	100%	97%	99%	88%	88%	78%	78%
Relative 2010	93%	99%	103%	100%	101%	91%	91%	80%	80%
Relative 2015	91%	97%	101%	99%	100%	90%	90%	79%	79%

## Per-Capita Emissions

	1990	2000	2005	2010	2015	2020	2025	2030	
Total excl. LULUCF						low	high	low	high
Population (Mio)	0	0	0	0	0	0	0	0	0
Per-Capita Emissions (tCO2eq/cap)	15.6	13.1	13.2	12.4	12.1	10.3	10.3	8.6	8.6
Relative 1990	100%	84%	84%	80%	78%	66%	66%	55%	55%
Relative 2000	120%	100%	101%	95%	93%	79%	79%	66%	66%
Relative 2005	119%	99%	100%	95%	92%	78%	78%	66%	66%
Relative 2010	126%	105%	106%	100%	98%	83%	83%	69%	69%
Relative 2015	129%	108%	108%	103%	100%	85%	85%	71%	71%

## Data Sources:

Cat1_CO2	PRIMAPHIST17	Cat5A1_CO2	UNFCCC CRF + Nat. Comms.
Cat2367_CO2	PRIMAPHIST17	Cat5A2_CO2	UNFCCC CRF + Nat. Comms.
Cat4_CO2	PRIMAPHIST17	Cat5LtoNonFL_CO2	UNFCCC CRF + Nat. Comms.
Cat5_CO2	PRIMAPHIST17	Cat5GCMCMWM_C	UNFCCC CRF
Cat1_CH4	PRIMAPHIST17	Cat5A1ForestFires	UNFCCC Cat5 + EDGAR(IPCC Database)
Cat2367_CH4	PRIMAPHIST17	Cat5A1HWP_CO2	UNFCCC CRF + Nat. Comms.
Cat4_CH4	PRIMAPHIST17	Cat5bisA_CO2	UNFCCC CRF + NATCOMM.
Cat5_CH4	PRIMAPHIST17	Cat5bisB_CO2	UNFCCC CRF + NATCOMM.
Cat1_N2O	PRIMAPHIST17	Cat5bisC_CO2	UNFCCC CRF + NATCOMM.
Cat2367_N2O	PRIMAPHIST17	Cat5bisD_CO2	UNFCCC CRF + NATCOMM.
Cat4_N2O	PRIMAPHIST17	Cat5bisE_CO2	UNFCCC CRF + NATCOMM.
Cat5_N2O	PRIMAPHIST17	PRO_WM_Cat5_G	UNFCCC Annex I Reports
Cat0_HFCs	PRIMAPHIST17	Metric	GWP AR4
Cat0_PFCs	PRIMAPHIST17		
Cat0_SF6	PRIMAPHIST17		
Population	UN 2015 Population Projections MEDIUM		
GDP	IMF WEO 2015, PPP adjusted GDP, constant 2009 prices...		
IPCC WG3 Scenario	IMAGE   AMPERE2-550-FullTech-HST		
PRIMAPHIST16 description:	www.pik-potsdam.de/primap-live/primap-hist/		
Gratefully acknowledged in particular: PRIMAP, CAIT, CDIAC, EDGAR, IPCC, IEA, UNEP GAP Team, AMPERE Team and comments on earlier versions, in particular by Giacomo Grassi. Errors and misjudgements are our own. Malte Meinshausen & Ryan Alexander; The "Fiji COP23" Edition was enabled through support via the BMUB project UM14 41 4060			
This Factsheet is available at <a href="http://www.climatecollege.unimelb.edu.au/indc-factsheets">www.climatecollege.unimelb.edu.au/indc-factsheets</a> . Check out as well: <a href="http://www.climateactiontracker.org">www.climateactiontracker.org</a> , <a href="http://www.mitigation-contributions.org">www.mitigation-contributions.org</a> , <a href="http://cait.wri.org">cait.wri.org</a> , <a href="http://infographics.pbl.nl/indc">infographics.pbl.nl/indc</a> , <a href="http://live.primap.org">live.primap.org</a> , <a href="http://www.unep.org/climatechange/pledgepipeline">www.unep.org/climatechange/pledgepipeline</a> , and our twitter feed @ClimateCollege			



## Various 'fair' contributions for a global 'least-cost' 2°C path (total incl. LULUCF):

2025 rel. 2010:	2030 rel. 2010:
LEADER	#N/A
CDC	#N/A
ECPC50	#N/A
ECPC90	#N/A
GDR	#N/A
INDC HIGH	#N/A
INDC LOW	#N/A

## More info on [www.mitigation-contributions.org](http://www.mitigation-contributions.org)

No results shown, as 2010 total incl. LULUCF emissions below zero  
"Fair" contributions for a global 'least-cost' 2°C track:  
LEADER Leader  
CDC Common-but-diff. per-cap. convergence  
ECPC50 Eq. cum. Per-capita since 1950  
ECPC90 Eq. cum. Per-capita since 1990  
GDR Greenhouse Development Rights  
#N/A No available data