

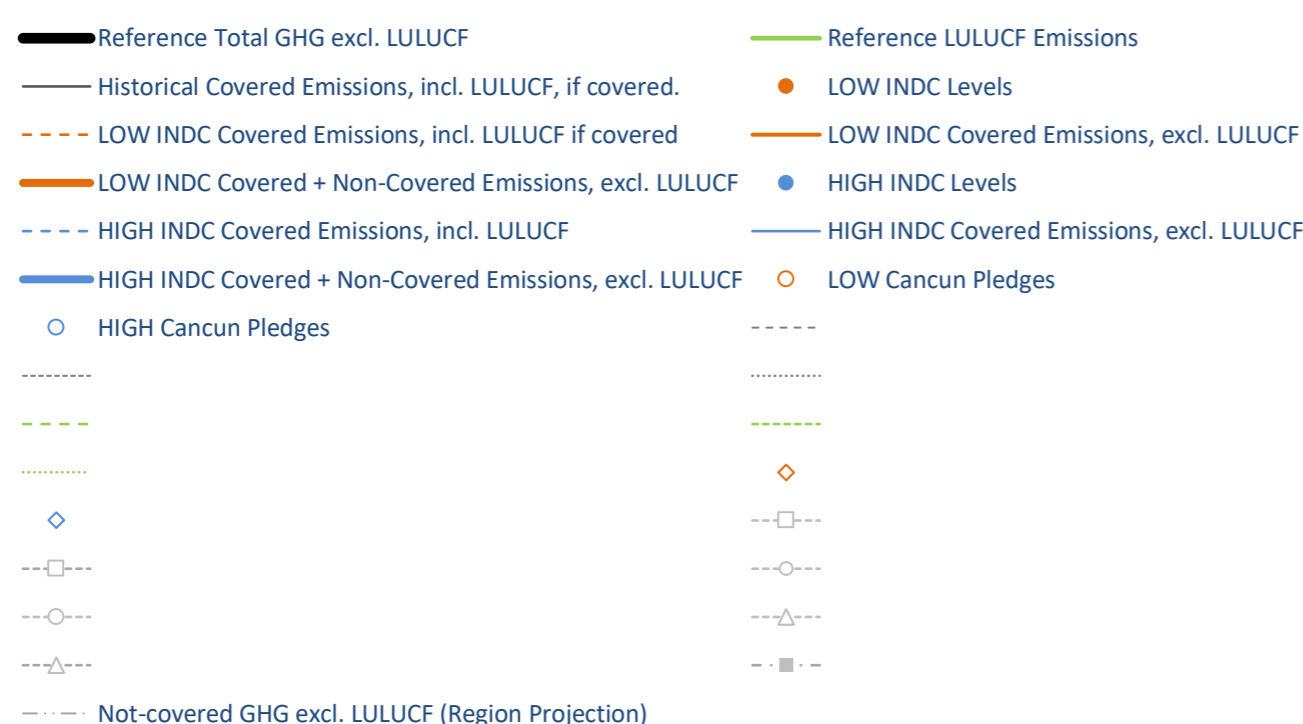
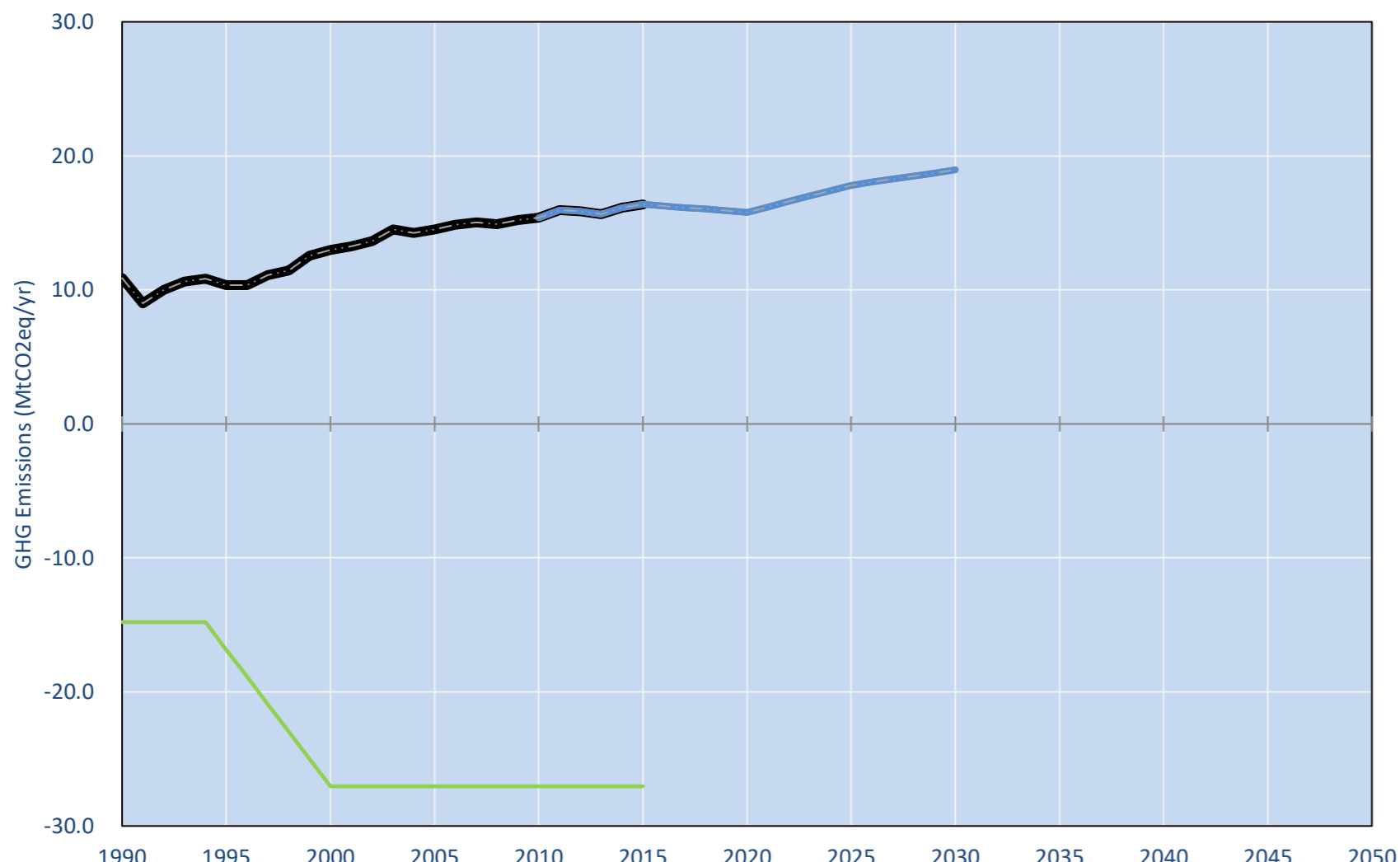
Nicaragua

Per-Capita Emissions in 2030 rel. 2015 (excl. LULUCF): **+0%**

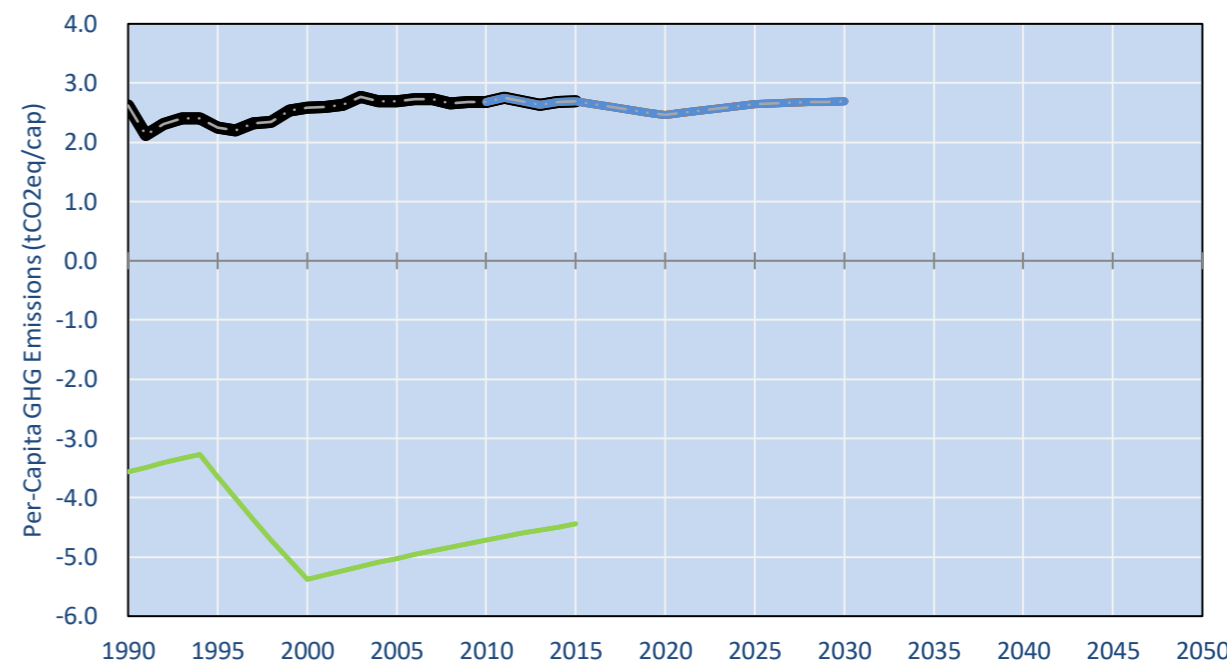
	2015 World Rank	2025 World Rank	2030 World Rank
Share of World Emissions excl. LULUCF (Rank):	0.0% #125	0.0% #128	0.0% #129
Per-Capita Emissions (tCO ₂ eq/cap)	2.7t #132	2.6t #135	2.7t #133

INDC Submitted: NOT YET

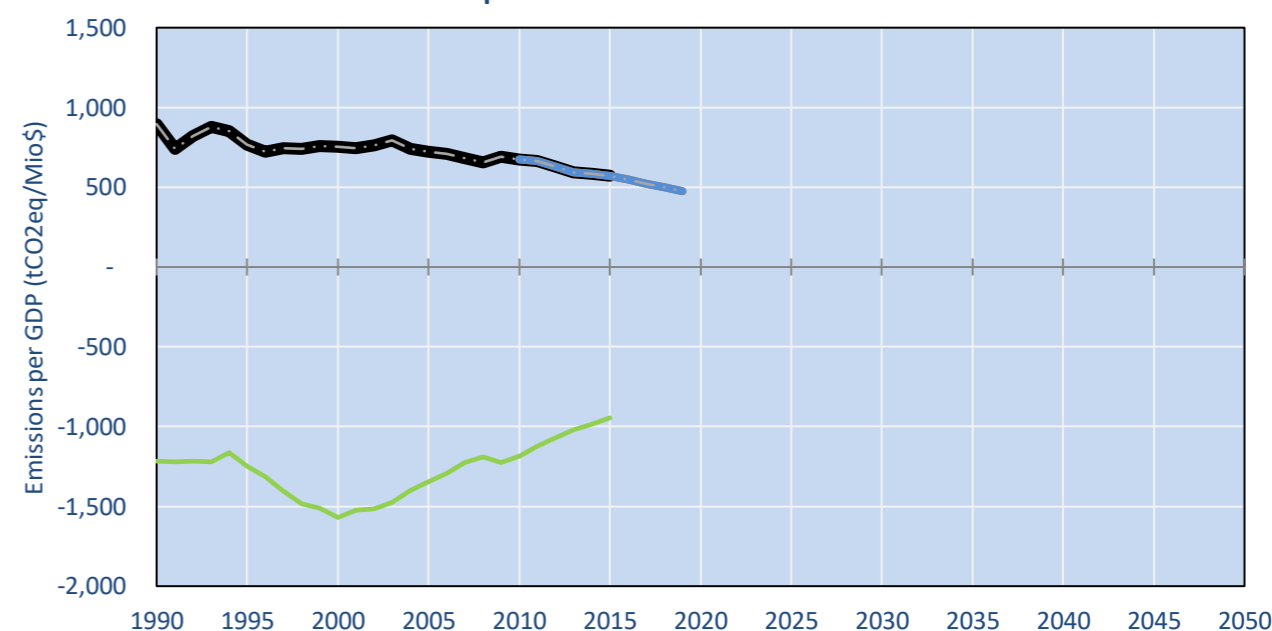
GHG Emissions



Per-Capita Emissions



GHG Emissions per GDP



2015 Total GHG Emissions excl. LULUCF

By Gas:	By Sector:
CO ₂ 29.6%	Cat. 1 Energy 31.5%
CH ₄ 51.9%	Cat. 2, 3, 6 & 7 14.5%
N ₂ O 18.5%	Cat 4. Agriculture 54.0%
F-gases 0.0%	F-gases 0.0%

GHG Emissions

	1990	2000	2005	2010	2015	2020	2025	2030	
(MtCO ₂ eq/yr in GWP AR4)						low	high	low	high
Assumed LULUCF Accounting Credits (-)/Debits (+)									
NDC/INDC covered LULUCF Emissions	-	-	-	-	-	-	-	-	-
NDC/INDC covered Emissions excl. LULUCF	-	-	-	-	-	-	-	-	-
Total GHG excl. LULUCF	11	13	14	15	16	16	18	18	19
Total GHG incl. LULUCF	4	14	13	12	11	11	9	9	8

Relative GHG Emissions

	1990	2000	2005	2010	2015	2020	2025	2030	
Total excl. LULUCF						low	high	low	high
Relative 1990	100%	120%	133%	141%	151%	145%	145%	164%	174%
Relative 2000	84%	100%	112%	118%	126%	122%	122%	137%	146%
Relative 2005	75%	90%	100%	106%	113%	109%	109%	123%	131%
Relative 2010	71%	84%	94%	100%	106%	103%	103%	116%	123%
Relative 2015	66%	79%	89%	94%	100%	96%	96%	109%	116%

Per-Capita Emissions

	1990	2000	2005	2010	2015	2020	2025	2030	
Total excl. LULUCF						low	high	low	high
Population (Mio)	4	5	5	6	6	6	7	7	7
Per-Capita Emissions (tCO ₂ eq/cap)	2.6	2.6	2.7	2.7	2.7	2.5	2.5	2.6	2.7
Relative 1990	100%	99%	103%	102%	103%	94%	94%	101%	103%
Relative 2000	101%	100%	104%	104%	104%	95%	95%	102%	104%
Relative 2005	97%	96%	100%	99%	100%	91%	91%	98%	100%
Relative 2010	98%	96%	101%	100%	100%	92%	92%	99%	101%
Relative 2015	97%	96%	100%	100%	100%	91%	91%	98%	100%

Data Sources:

Cat1_CO2	PRIMAPHIST17	Cat5A1_CO2	UNFCCC CRF + Nat. Comms.
Cat2367_CO2	PRIMAPHIST17	Cat5A2_CO2	UNFCCC CRF + Nat. Comms.
Cat4_CO2	PRIMAPHIST17	Cat5LtoNonFL_CO2	UNFCCC CRF + Nat. Comms.
Cat5_CO2	PRIMAPHIST17	Cat5GCMCMWM_C	UNFCCC CRF
Cat1_CH4	PRIMAPHIST17	Cat5A1ForestFires	UNFCCC Cat5 + EDGAR(IPCC Database)
Cat2367_CH4	PRIMAPHIST17	Cat5A1HWP_CO2	UNFCCC CRF + Nat. Comms.
Cat4_CH4	PRIMAPHIST17	Cat5bisA_CO2	UNFCCC CRF + NATCOMM.
Cat5_CH4	PRIMAPHIST17	Cat5bisB_CO2	UNFCCC CRF + NATCOMM.
Cat1_N2O	PRIMAPHIST17	Cat5bisC_CO2	UNFCCC CRF + NATCOMM.
Cat2367_N2O	PRIMAPHIST17	Cat5bisD_CO2	UNFCCC CRF + NATCOMM.
Cat4_N2O	PRIMAPHIST17	Cat5bisE_CO2	UNFCCC CRF + NATCOMM.
Cat5_N2O	PRIMAPHIST17	PRO_WM_Cat5_G	UNFCCC Annex I Reports
Cat0_HFCs	PRIMAPHIST17	Metric	GWP AR4
Cat0_PFCs	PRIMAPHIST17		
Cat0_SF6	PRIMAPHIST17		
Population	UN 2015 Population Projections MEDIUM		
GDP	IMF WEO 2015, PPP adjusted GDP, constant 2009 prices...		
IPCC WG3 Scenario	IMAGE AMPERE2-550-FullTech-HST		
PRIMAPHIST16 description:	www.pik-potsdam.de/primap-live/primap-hist/		
Gratefully acknowledged in particular:	PRIMAP, CAIT, CDIAC, EDGAR, IPCC, IEA, UNEP Gap Team, AMPERE Team and comments on earlier versions, in particular by Giacomo Grassi. Errors and misjudgements are our own. Malte Meinshausen & Ryan Alexander; The "Fiji COP23" Edition was enabled through support via the BMUB project UM14 41 4060		

climatecollege.unimelb.edu.au



Various 'fair' contributions for a global 'least-cost' 2°C path (total incl. LULUCF):

2025 rel. 2010:	2030 rel. 2010:	2025 rel. 2010:	2030 rel. 2010:
LEADER	#N/A	LEADER	#N/A
CDC	#N/A	CDC	#N/A
ECPC50	#N/A	ECPC50	#N/A
ECPC90	#N/A	ECPC90	#N/A
GDR	#N/A	GDR	#N/A
INDC HIGH	#N/A	INDC HIGH	#N/A
INDC LOW	#N/A	INDC LOW	#N/A

No results shown, as 2010 total incl. LULUCF emissions below zero
"Fair" contributions for a global 'least-cost' 2°C track:
LEADER Leader
CDC Common-but-diff. per-cap. convergence
ECPC50 Eq. cum. Per-capita since 1950
ECPC90 Eq. cum. Per-capita since 1990
GDR Greenhouse Development Rights
#N/A No available data