

Shown: 2025 & 2030: Min/max of unconditional and conditional targets

Paris Agreement ratified on: 19/09/2017

Myanmar

Per-Capita Emissions in 2030 rel. 2015 (excl. LULUCF): **-16%**

NDC 2025

NDC 2030

2015 World Rank

2025 World Rank

2030 World Rank

Share of World Emissions excl. LULUCF (Rank):

0.3% #46

0.2% #57

0.2% #56

Per-Capita Emissions (tCO2eq/cap)

2.3t #141

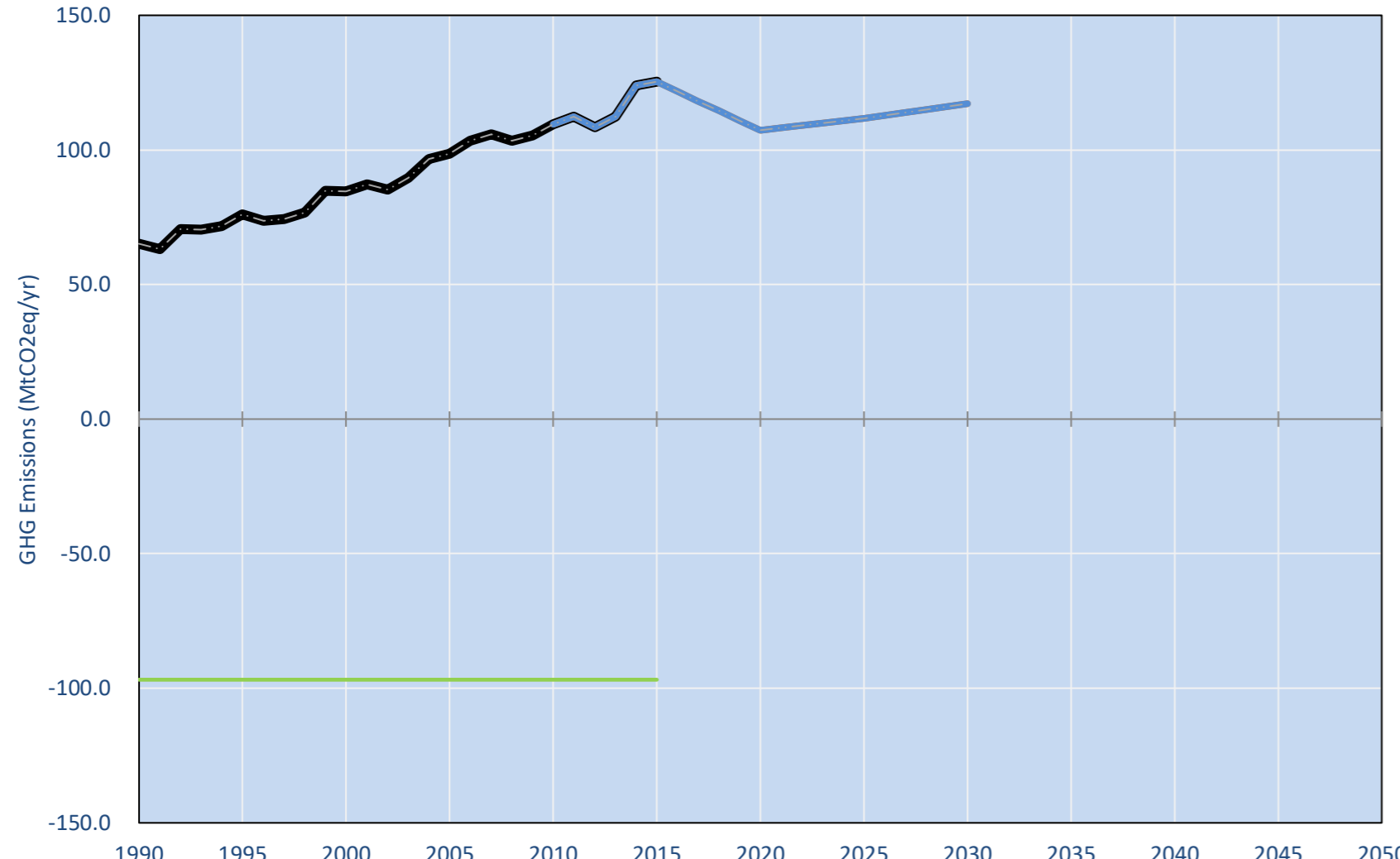
1.9t #160

1.9t #154

NDC: Will undertake mitigation actions in line with sustainable development needs, conditional on availability of international support. (N/A (no quantitative emission target))

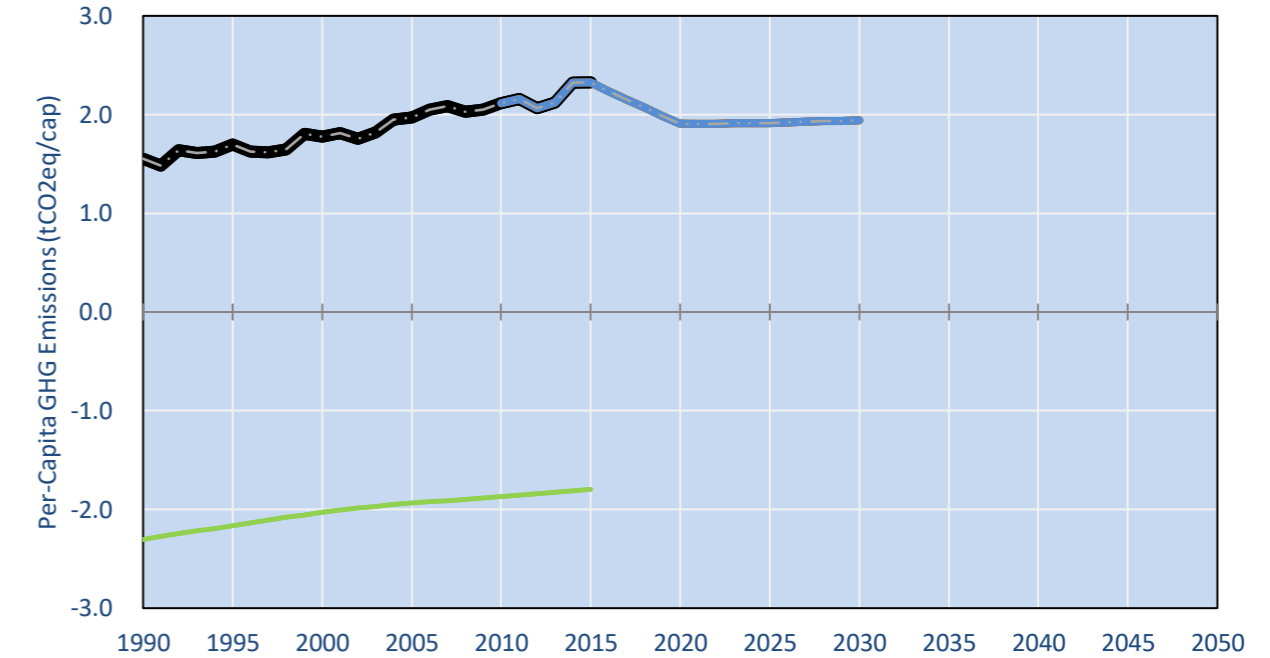
INDC Submitted: 28/09/2015

GHG Emissions

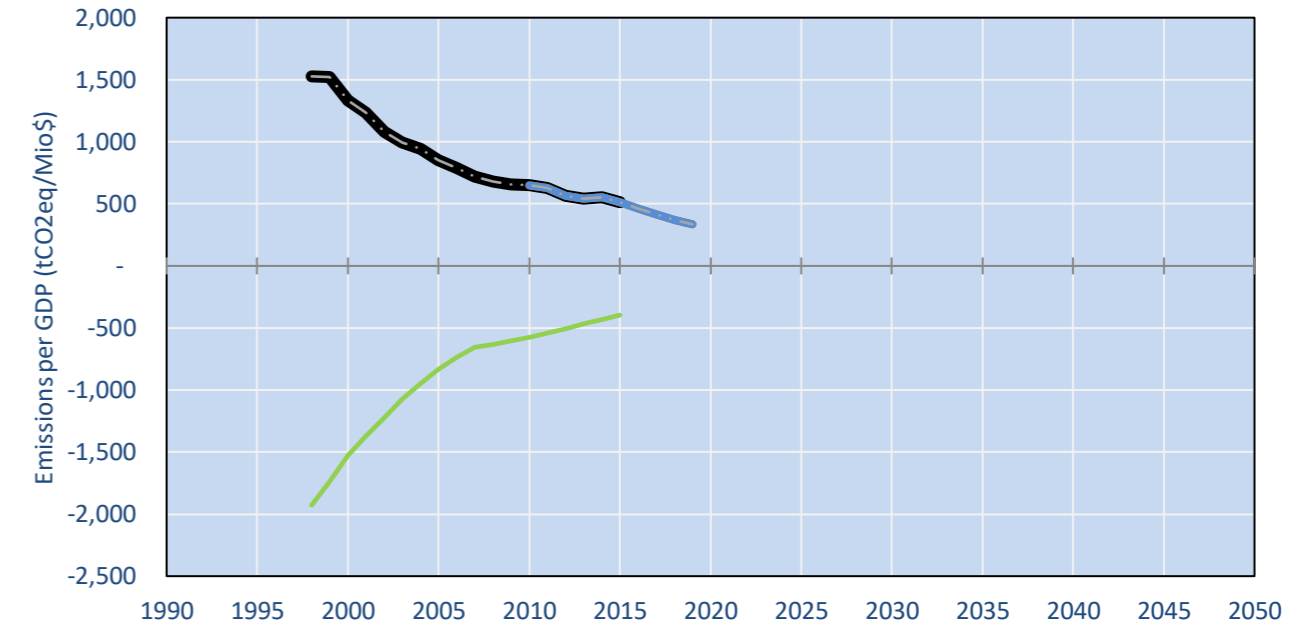


- Reference Total GHG excl. LULUCF
- Historical Covered Emissions, incl. LULUCF, if covered.
- LOW INDC Covered Emissions, incl. LULUCF if covered
- LOW INDC Covered + Non-Covered Emissions, excl. LULUCF
- HIGH INDC Covered Emissions, incl. LULUCF
- HIGH INDC Covered + Non-Covered Emissions, excl. LULUCF
- HIGH Cancun Pledges
- Reference LULUCF Emissions
- LOW INDC Levels
- LOW INDC Covered Emissions, excl. LULUCF
- HIGH INDC Levels
- HIGH INDC Covered Emissions, excl. LULUCF
- LOW Cancun Pledges
- Not-covered GHG excl. LULUCF (Region Projection)

Per-Capita Emissions

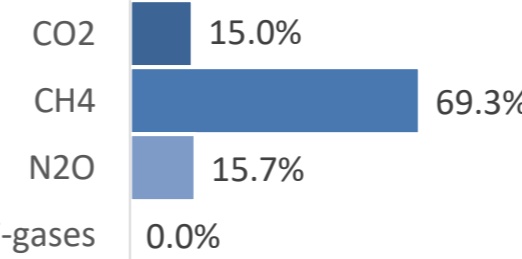


GHG Emissions per GDP

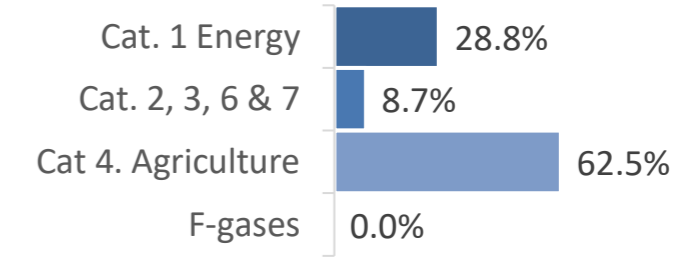


2015 Total GHG Emissions excl. LULUCF

By Gas:



By Sector:



GHG Emissions

	1990	2000	2005	2010	2015	2020	2025	2030	
(MtCO2eq/yr in GWP AR4)						low	high	low	high
Assumed LULUCF Accounting Credits (-)/Debits (+)									
NDC covered LULUCF Emissions	-	-	-	-	-	-	-	-	-
NDC covered Emissions excl. LULUCF	-	-	-	-	-	-	-	-	-
Total GHG excl. LULUCF	65	85	99	109	125	107	107	112	112
Total GHG incl. LULUCF	32	12	2	13	29	10	10	15	15

Relative GHG Emissions

	1990	2000	2005	2010	2015	2020	2025	2030	
Total excl. LULUCF						low	high	low	high
Relative 1990	100%	130%	151%	168%	193%	165%	165%	172%	172%
Relative 2000	77%	100%	116%	129%	148%	127%	127%	132%	132%
Relative 2005	66%	86%	100%	111%	127%	109%	109%	113%	113%
Relative 2010	60%	77%	90%	100%	115%	98%	98%	102%	102%
Relative 2015	52%	67%	79%	87%	100%	86%	86%	89%	89%

Per-Capita Emissions

	1990	2000	2005	2010	2015	2020	2025	2030	
Total excl. LULUCF						low	high	low	high
Population (Mio)	42	48	50	52	54	56	56	58	58
Per-Capita Emissions (tCO2eq/cap)	1.6	1.8	2.0	2.1	2.3	1.9	1.9	1.9	1.9
Relative 1990	100%	115%	127%	136%	150%	123%	123%	124%	124%
Relative 2000	87%	100%	111%	119%	131%	107%	107%	108%	108%
Relative 2005	79%	90%	100%	107%	118%	97%	97%	97%	99%
Relative 2010	73%	84%	93%	100%	110%	90%	90%	91%	91%
Relative 2015	67%	76%	85%	91%	100%	82%	82%	82%	82%

Data Sources:

Cat1_CO2	PRIMAPHIST17	Cat5A1_CO2	UNFCCC CRF + Nat. Comms.
Cat2367_CO2	PRIMAPHIST17	Cat5A2_CO2	UNFCCC CRF + Nat. Comms.
Cat4_CO2	PRIMAPHIST17	Cat5LtoNonFL_CO2	UNFCCC CRF + Nat. Comms.
Cat5_CO2	PRIMAPHIST17	Cat5GMCMWMM_C	UNFCCC CRF
Cat1_CH4	PRIMAPHIST17	Cat5A1ForestFires	UNFCCC Cat5 + EDGAR(IPCC Database)
Cat2367_CH4	PRIMAPHIST17	Cat5A1HWP_CO2	UNFCCC CRF + Nat. Comms.
Cat4_CH4	PRIMAPHIST17	Cat5bisA_CO2	UNFCCC CRF + NATCOMM.
Cat5_CH4	PRIMAPHIST17	Cat5bisB_CO2	UNFCCC CRF + NATCOMM.
Cat1_N2O	PRIMAPHIST17	Cat5bisC_CO2	UNFCCC CRF + NATCOMM.
Cat2367_N2O	PRIMAPHIST17	Cat5bisD_CO2	UNFCCC CRF + NATCOMM.
Cat4_N2O	PRIMAPHIST17	Cat5bisE_CO2	UNFCCC CRF + NATCOMM.
Cat5_N2O	PRIMAPHIST17	PRO_WM_Cat5_G	UNFCCC Annex I Reports
Cat0_HFCs	PRIMAPHIST17	Metric	GWP AR4
Cat0_PFCs	PRIMAPHIST17		
Cat0_SF6	PRIMAPHIST17		
Population	UN 2015 Population Projections MEDIUM		
GDP	IMF WEO 2015, PPP adjusted GDP, constant 2009 prices...		
	IPCC WG3 Scenario IMAGE AMPERE2-550-FullTech-HST		
	PRIMAPHIST16 description: www.pik-potsdam.de/primap-live/primap-hist/		
	Gratefully acknowledged in particular: PRIMAP, CAIT, CDIAC, EDGAR, IPCC, IEA, UNEP Gap Team, AMPERE Team and comments on earlier versions, in particular by Giacomo Grassi. Errors and misjudgements are our own. Malte Meinshausen & Ryan Alexander; The "Fiji COP23" Edition was enabled through support via the BMUB project UM14 41 4060		
	This Factsheet is available at www.climatecollege.unimelb.edu.au/indc-factsheets. Check out as well: www.climateactiontracker.org, www.mitigation-contributions.org, cait.wri.org, infographics.pbl.nl/indc, live.primap.org, www.unep.org/climatechange/pledgepipeline, and our twitter feed @ClimateCollege		

climatecollege.unimelb.edu.au



Various 'fair' contributions for a global 'least-cost' 2°C path (total incl. LULUCF):

More info on www.mitigation-contributions.org

	2025 rel. 2010:	2030 rel. 2010:
LEADER	#N/A	LEADER
CDC	#N/A	CDC
ECPC50	#N/A	ECPC50
ECPC90	#N/A	ECPC90
GDR	#N/A	GDR
INDC HIGH	19%	INDC HIGH
INDC LOW	19%	INDC LOW

	#N/A
LEADER	61%
CDC	61%
ECPC50	#N/A
ECPC90	#N/A
GDR	#N/A
INDC HIGH	#N/A
INDC LOW	#N/A

"Fair" contributions for a global 'least-cost' 2°C track:

- LEADER Leader
- CDC Common-but-diff. per-cap. convergence
- ECPC50 Eq. cum. Per-capita since 1950
- ECPC90 Eq. cum. Per-capita since 1990
- GDR Greenhouse Development Rights
- #N/A No available data