

Mauritius

Per-Capita Emissions in 2030 rel. 2015 (excl. LULUCF): **+26%**

NDC 2025

NDC 2030

2015 World Rank

2025 World Rank

2030 World Rank

Share of World Emissions excl. LULUCF (Rank):

0.0% #151

0.0% #151

0.0% #148

Per-Capita Emissions (tCO2eq/cap)

5.9t #74

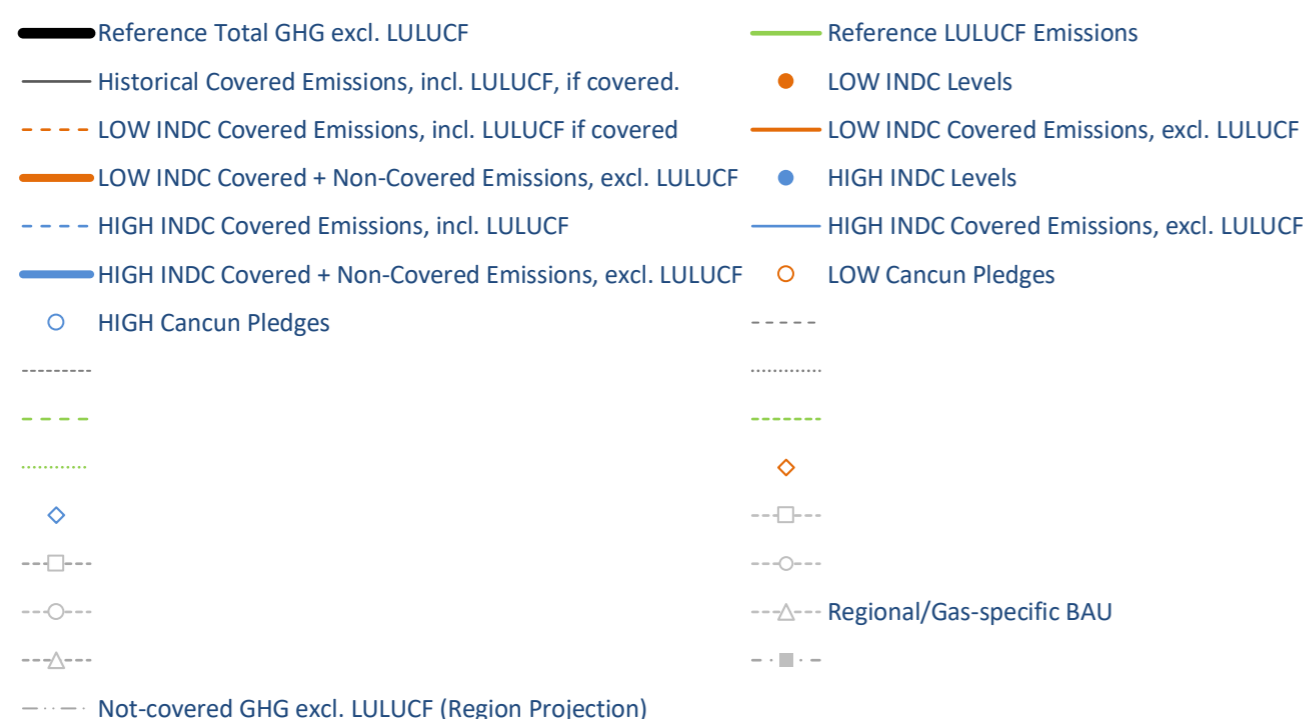
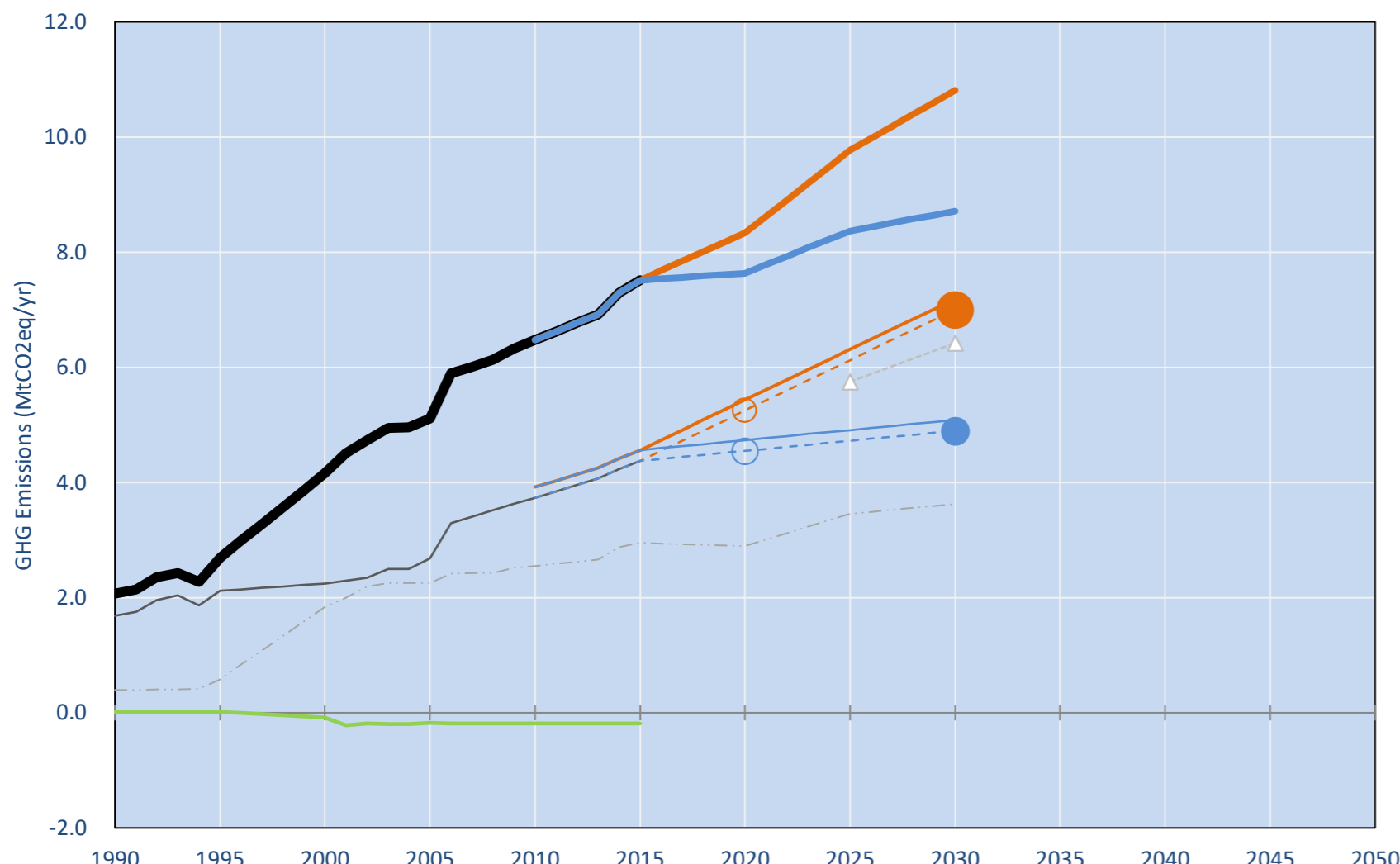
7t #62

7.5t #55

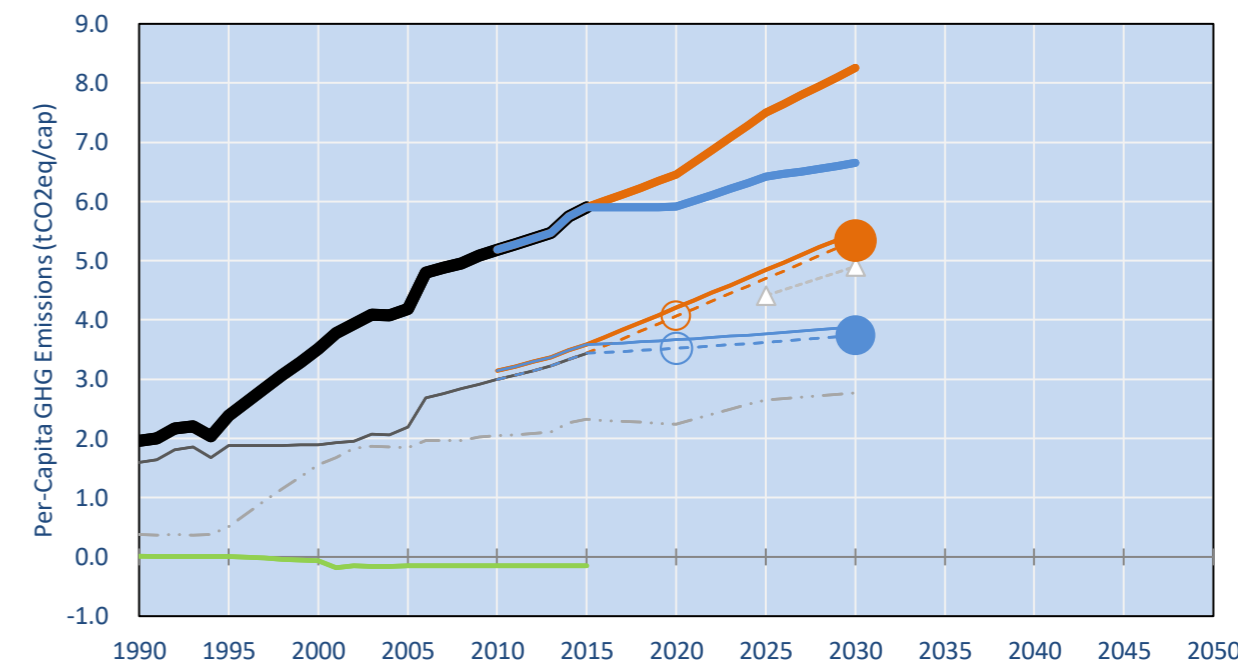
NDC: 30% GHG emission reduction compared to BAU by 2030 conditional to international support. (GWP unclear)

INDC Submitted: 28/09/2015

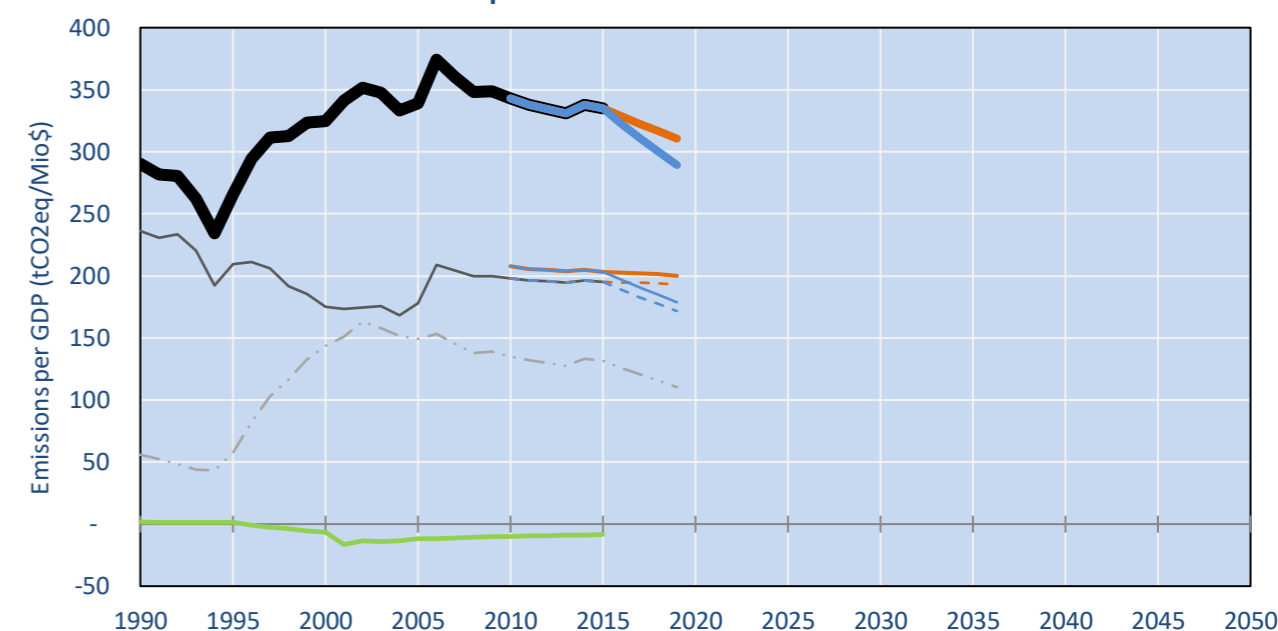
GHG Emissions



Per-Capita Emissions

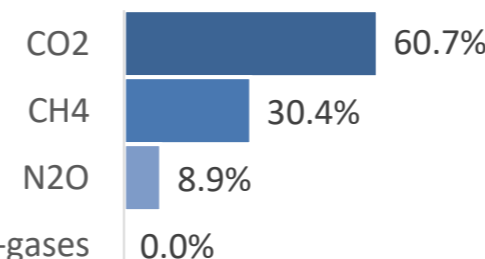


GHG Emissions per GDP

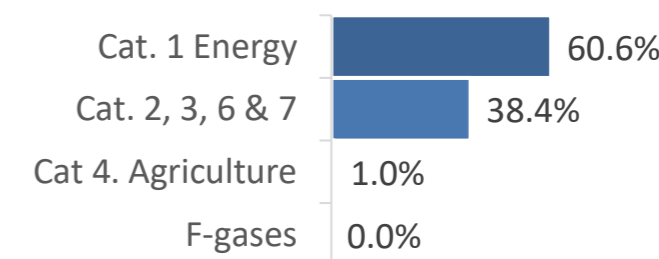


2015 Total GHG Emissions excl. LULUCF

By Gas:



By Sector:



GHG Emissions

	1990	2000	2005	2010	2015	2020		2025		2030	
						low	high	low	high	low	high
(MtCO2eq/yr in GWP AR5)											
Assumed LULUCF Accounting Credits (-)/Debits (+)											
NDC covered LULUCF Emissions	0	0	0	0	0	0	0	0	0	0	0
NDC covered Emissions excl. LULUCF	2	2	3	4	5	5	5	6	5	7	5
Total GHG excl. LULUCF	2	4	5	6	8	8	8	10	8	11	9
Total GHG incl. LULUCF	2	4	5	6	7	8	7	10	8	11	9

Relative GHG Emissions

	1990	2000	2005	2010	2015	2020		2025		2030	
						low	high	low	high	low	high
Total excl. LULUCF											
Relative 1990	100%	201%	247%	313%	363%	403%	369%	472%	404%	523%	421%
Relative 2000	50%	100%	123%	155%	180%	200%	183%	235%	201%	260%	209%
Relative 2005	40%	81%	100%	127%	147%	163%	149%	191%	164%	211%	170%
Relative 2010	32%	64%	79%	100%	116%	129%	118%	151%	129%	167%	135%
Relative 2015	28%	55%	68%	86%	100%	111%	102%	130%	111%	144%	116%

Per-Capita Emissions

	1990	2000	2005	2010	2015	2020		2025		2030	
						low	high	low	high	low	high
Total excl. LULUCF											
Population (Mio)	1	1	1	1	1	1	1	1	1	1	1
Per-Capita Emissions (tCO2eq/cap)	2.0	3.5	4.2	5.2	5.9	6.5	5.9	7.5	6.4	8.3	6.7
Relative 1990	100%	179%	214%	265%	301%	329%	302%	382%	328%	421%	339%
Relative 2000	56%	100%	119%	148%	168%	184%	168%	213%	183%	235%	189%
Relative 2005	47%	84%	100%	124%	141%	154%	141%	179%	153%	197%	159%
Relative 2010	38%	68%	81%	100%	114%	124%	114%	144%	124%	159%	128%
Relative 2015	33%	60%	71%	88%	100%	109%	100%	127%	109%	140%	113%

Data Sources:

Cat1_CO2 PRIMAPHIST17
 Cat2367_CO2 PRIMAPHIST17
 Cat4_CO2 PRIMAPHIST17
 Cat5_CO2 PRIMAPHIST17
 Cat1_CH4 PRIMAPHIST17
 Cat2367_CH4 PRIMAPHIST17
 Cat4_CH4 PRIMAPHIST17
 Cat5_CH4 PRIMAPHIST17
 Cat1_N2O PRIMAPHIST17
 Cat2367_N2O PRIMAPHIST17
 Cat4_N2O PRIMAPHIST17
 Cat5_N2O PRIMAPHIST17
 Cat0_HFCs PRIMAPHIST17
 Cat0_PFCs PRIMAPHIST17
 Cat0_SF6 PRIMAPHIST17
 Population UN 2015 Population Projections MEDIUM
 GDP IMF WEO 2015, PPP adjusted GDP, constant 2009 prices...
 PRIMAPHIST16 Scenario IMAGE | AMPERE2-550-FullTech-HST
 PRIMAPHIST16 description: www.pik-potsdam.de/primap-live/primap-hist/
 Gratefully acknowledged in particular: PRIMAP, CAIT, CDIAC, EDGAR, IPCC, IEA, UNEP Gap Team, AMPERE Team and comments on earlier versions, in particular by Giacomo Grassi. Errors and misjudgements are our own. Malte Meinshausen & Ryan Alexander; The "Fiji COP23" Edition was enabled through support via the BMUB project UM14 41 4060
 This Factsheet is available at www.climatecollege.unimelb.edu.au/indc-factsheets. Check out as well: www.climateactiontracker.org, www.mitigation-contributions.org, cait.wri.org, infographics.pbl.nl/indc, live.primap.org, www.unep.org/climatechange/pledgepipeline, and our twitter feed @ClimateCollege
 climatecollege.unimelb.edu.au
 AUSTRALIAN-GERMAN CLIMATE & ENERGY COLLEGE

Various 'fair' contributions for a global 'least-cost' 2°C path (total incl. LULUCF):

More info on www.mitigation-contributions.org

2025 rel. 2010:		2030 rel. 2010:	
LEADER	#N/A	LEADER	#N/A
CDC	#N/A	CDC	#N/A
ECPC50	#N/A	ECPC50	#N/A
ECPC90	#N/A	ECPC90	#N/A
GDR	#N/A	GDR	#N/A
INDC HIGH	30%	INDC HIGH	36%
INDC LOW	52%	INDC LOW	69%

"Fair" contributions for a global 'least-cost' 2°C track:
 LEADER Leader
 CDC Common-but-diff. per-cap. convergence
 ECPC50 Eq. cum. Per-capita since 1950
 ECPC90 Eq. cum. Per-capita since 1990
 GDR Greenhouse Development Rights
 #N/A No available data