



Mali

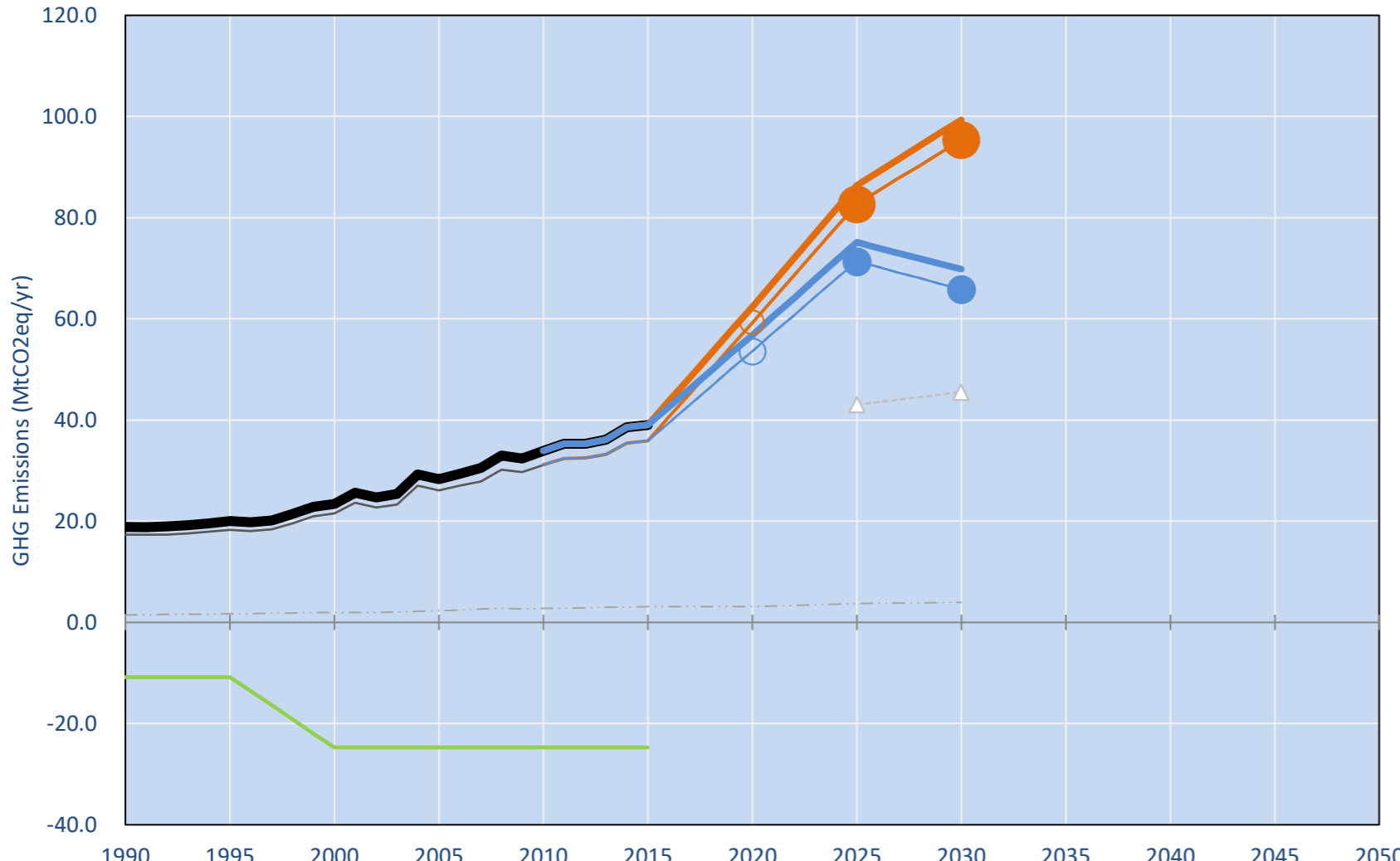
Per-Capita Emissions in 2030 rel. 2015 (excl. LULUCF): **+39%**

NDC 2025	NDC 2030	2015 World Rank	2025 World Rank	2030 World Rank
0% rel. BAU of 82.7 Mt	0% rel. BAU of 95.4 Mt	0.1% #95	0.2% #68	0.2% #70
-14% rel. BAU of 82.7 Mt	-31% rel. BAU of 95.4 Mt	Per-Capita Emissions (tCO ₂ eq/cap): 2.2t #145	3.4t #118	3.1t #124

NDC: GHG emission reduction of 29% from agriculture, 31% from energy and 21% from forest compared to BAU levels by 2030. (2006 IPCC Guidelines)

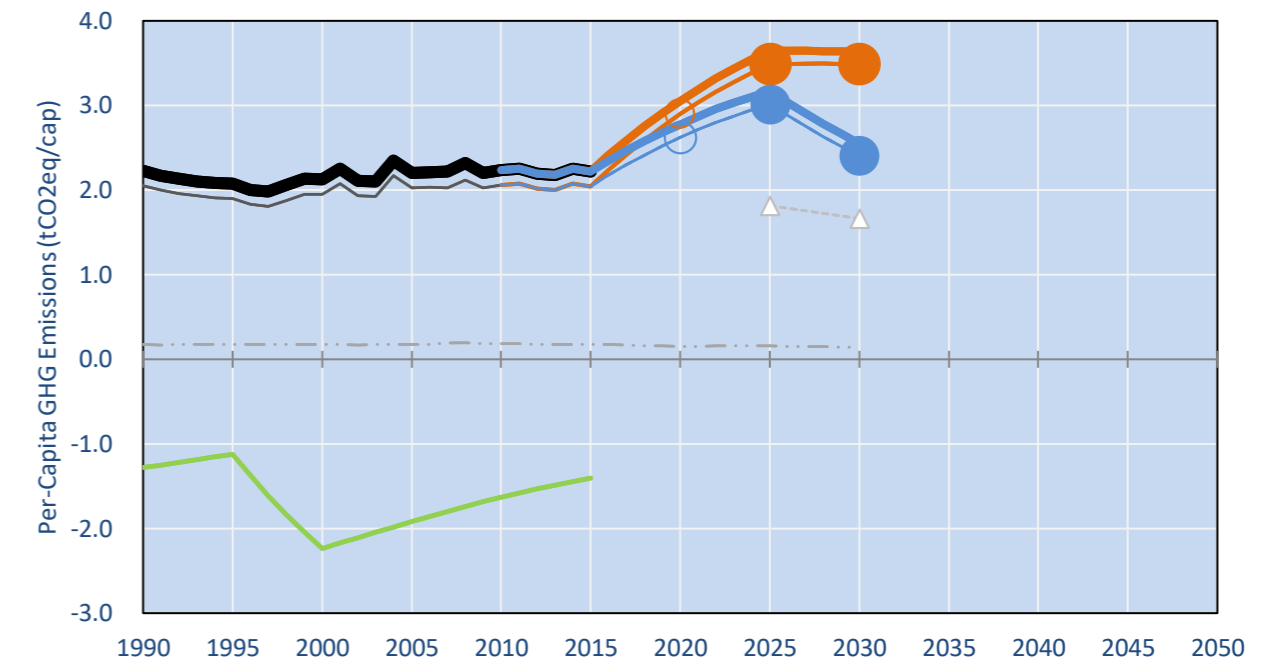
INDC Submitted: 29/09/2015

GHG Emissions

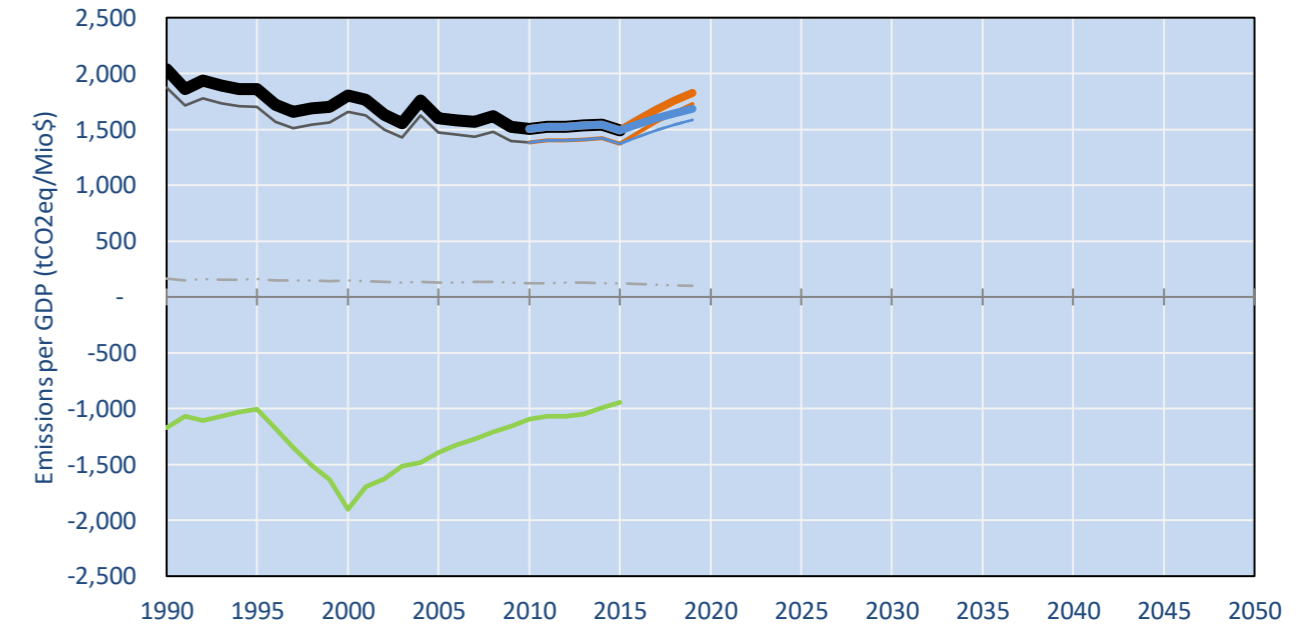


- Reference Total GHG excl. LULUCF
- Historical Covered Emissions, incl. LULUCF, if covered.
- LOW INDC Covered Emissions, incl. LULUCF if covered
- LOW INDC Covered + Non-Covered Emissions, excl. LULUCF
- HIGH INDC Covered Emissions, incl. LULUCF
- HIGH INDC Covered + Non-Covered Emissions, excl. LULUCF
- HIGH Cancun Pledges
- Reference LULUCF Emissions
- LOW INDC Levels
- LOW INDC Covered Emissions, excl. LULUCF
- HIGH INDC Levels
- HIGH INDC Covered Emissions, excl. LULUCF
- LOW Cancun Pledges
- Regional/Gas-specific BAU
- Not-covered GHG excl. LULUCF (Region Projection)

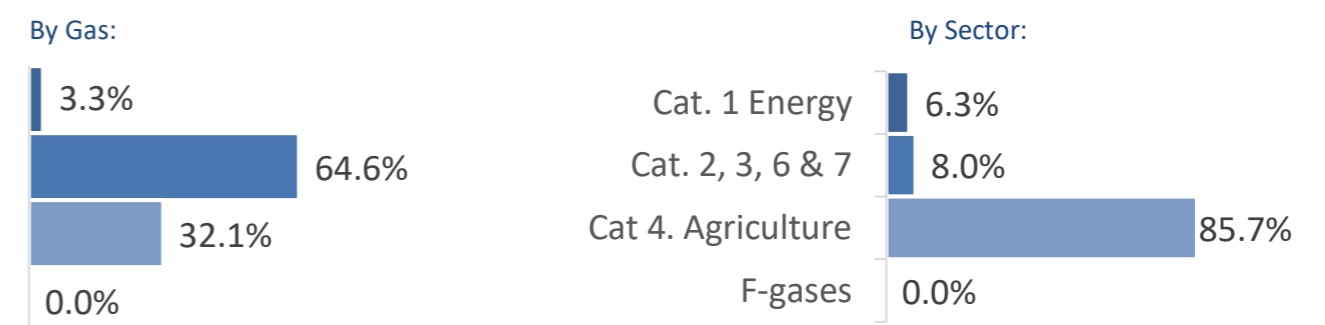
Per-Capita Emissions



GHG Emissions per GDP



2015 Total GHG Emissions excl. LULUCF



GHG Emissions

	1990	2000	2005	2010	2015	2020	2025	2030	
(MtCO ₂ eq/yr in GWP AR5)						low	high	low	high
Assumed LULUCF Accounting Credits (-)/Debits (+)									
NDC covered LULUCF Emissions									
NDC covered Emissions excl. LULUCF	17	22	26	31	36	59	54	83	71
Total GHG excl. LULUCF	19	23	28	34	39	62	57	86	75
Total GHG incl. LULUCF	8	1	4	9	14	38	32	62	50

Relative GHG Emissions

	1990	2000	2005	2010	2015	2020	2025	2030	
Total excl. LULUCF						low	high	low	high
Relative 1990	100%	124%	150%	180%	207%	330%	301%	458%	398%
Relative 2000	80%	100%	121%	145%	166%	266%	242%	368%	320%
Relative 2005	67%	83%	100%	120%	138%	220%	200%	305%	265%
Relative 2010	56%	69%	84%	100%	115%	184%	167%	255%	221%
Relative 2015	48%	60%	73%	87%	100%	160%	146%	221%	193%

Per-Capita Emissions

	1990	2000	2005	2010	2015	2020	2025	2030	
Total excl. LULUCF						low	high	low	high
Population (Mio)	8	11	13	15	18	20	20	24	24
Per-Capita Emissions (tCO ₂ eq/cap)	2.2	2.1	2.2	2.2	2.2	3.1	2.8	3.6	3.2
Relative 1990	100%	95%	99%	100%	100%	137%	125%	164%	142%
Relative 2000	105%	100%	104%	105%	104%	144%	131%	172%	149%
Relative 2005	101%	97%	100%	102%	101%	139%	126%	166%	144%
Relative 2010	100%	95%	98%	100%	99%	136%	124%	163%	142%
Relative 2015	100%	96%	99%	101%	100%	138%	125%	164%	143%

Data Sources:

- Cat1_CO2 PRIMAPHIST17
- Cat2367_CO2 PRIMAPHIST17
- Cat4_CO2 COUNTRY-SPECIFIC USER DATA
- Cat5_CO2 PRIMAPHIST17
- Cat1_CH4 PRIMAPHIST17
- Cat2367_CH4 PRIMAPHIST17
- Cat4_CH4 PRIMAPHIST17
- Cat5_CH4 PRIMAPHIST17
- Cat1_N2O PRIMAPHIST17
- Cat2367_N2O PRIMAPHIST17
- Cat4_N2O PRIMAPHIST17
- Cat5_N2O PRIMAPHIST17
- Cat0_HFCs PRIMAPHIST17
- Cat0_PFCs PRIMAPHIST17
- Cat0_SF6 PRIMAPHIST17
- Population UN 2015 Population Projections MEDIUM
- GDP IMF WEO 2015, PPP adjusted GDP, constant 2009 prices...
- IPCC WG3 Scenario IMAGE | AMPERE2-550-FullTech-HST
- PRIMAPHIST16 description: www.pik-potsdam.de/primap-live/primap-hist/
- Gratefully acknowledged in particular: PRIMAP, CAIT, CDIAC, EDGAR, IPCC, IEA, UNEP Gap Team, AMPERE Team and comments on earlier versions, in particular by Giacomo Grassi. Errors and misjudgements are our own. Malte Meinshausen & Ryan Alexander; The "Fiji COP23" Edition was enabled through support via the BMUB project UM14 41 4060
- This Factsheet is available at www.climatecollege.unimelb.edu.au/indc-factsheets. Check out as well: www.climateactiontracker.org, www.mitigation-contributions.org, cait.wri.org, infographics.pbl.nl/indc, live.primap.org, www.unep.org/climatechange/pledgepipeline, and our twitter feed @ClimateCollege
- Cat5A1_CO2 UNFCCC CRF + Nat. Comms.
- Cat5A2_CO2 UNFCCC CRF + Nat. Comms.
- Cat5LtoNonFL_CO2 UNFCCC CRF + Nat. Comms.
- Cat5GMCMWMM_C UNFCCC CRF
- Cat5A1ForestFires UNFCCC Cat5 + EDGAR(IPCC Database)
- Cat5A1HWP_CO2 UNFCCC CRF + Nat. Comms.
- Cat5bisA_CO2 UNFCCC CRF + NATCOMM.
- Cat5bisB_CO2 UNFCCC CRF + NATCOMM.
- Cat5bisC_CO2 UNFCCC CRF + NATCOMM.
- Cat5bisD_CO2 UNFCCC CRF + NATCOMM.
- Cat5bisE_CO2 UNFCCC CRF + NATCOMM.
- PRO_WM_Cat5_G UNFCCC Annex I Reports
- Metric GWP AR5

climatecollege.unimelb.edu.au



Meinshausen, Alexander et al., www.climatecollege.unimelb.edu.au/indc-factsheets, The University of Melbourne

Various 'fair' contributions for a global 'least-cost' 2°C path (total incl. LULUCF):

2025 rel. 2010:	2030 rel. 2010:
LEADER #N/A	LEADER #N/A
CDC #N/A	CDC #N/A
ECPC50 #N/A	ECPC50 #N/A
ECPC90 #N/A	ECPC90 #N/A
GDR #N/A	GDR #N/A
INDC HIGH 447%	INDC HIGH 389%
INDC LOW 569%	INDC LOW 709%

More info on www.mitigation-contributions.org

"Fair" contributions for a global 'least-cost' 2°C track:

- LEADER Leader
- CDC Common-but-diff. per-cap. convergence
- ECPC50 Eq. cum. Per-capita since 1950
- ECPC90 Eq. cum. Per-capita since 1990
- GDR Greenhouse Development Rights
- #N/A No available data