

Lebanon

Per-Capita Emissions in 2030 rel. 2015 (excl. LULUCF): **+32%**

INDC 2025

INDC 2030

2015 World Rank

2025 World Rank

2030 World Rank

Share of World Emissions excl. LULUCF (Rank):

0.1% #106

0.1% #111

0.1% #108

Per-Capita Emissions (tCO2eq/cap)

4.9t #94

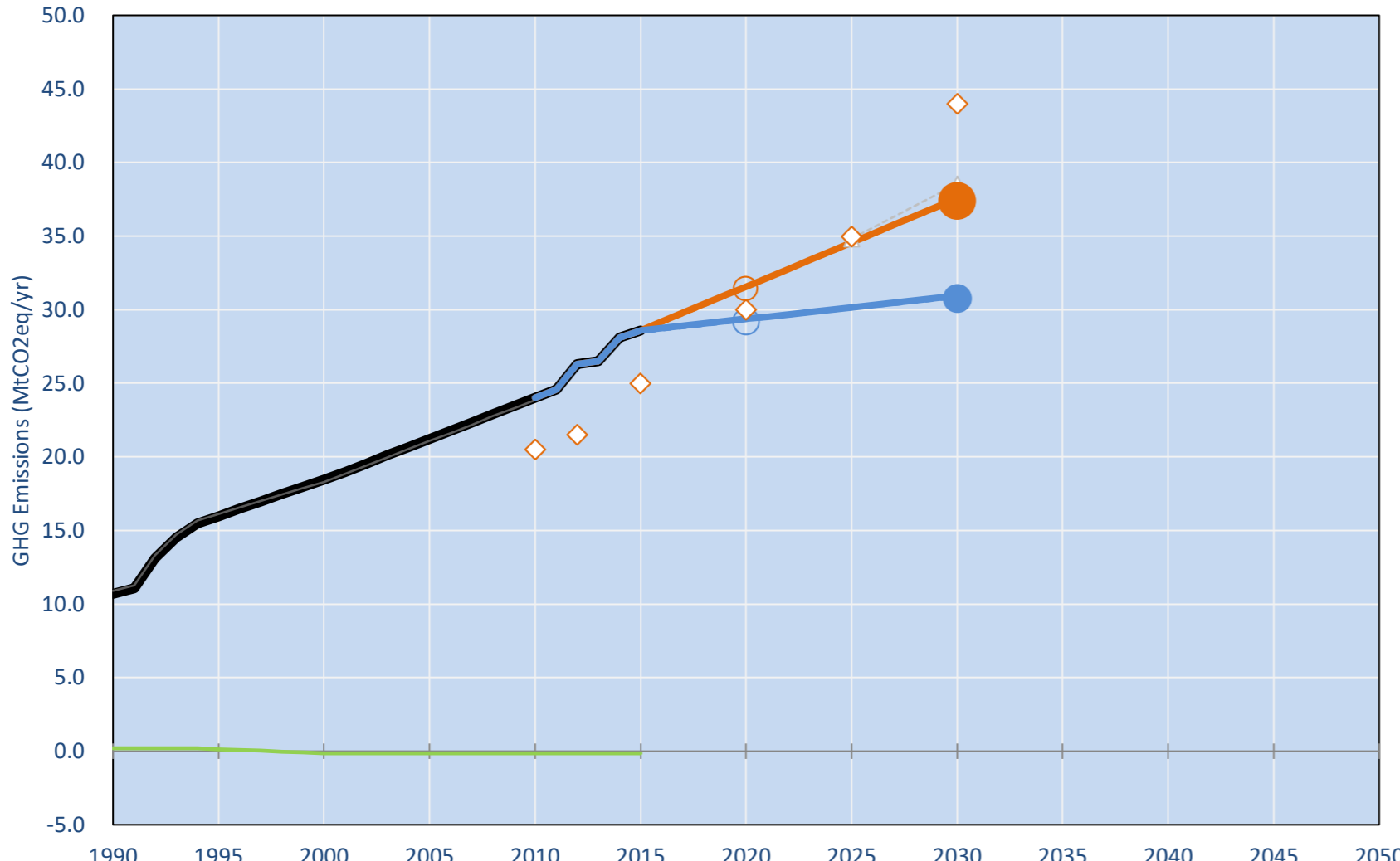
6t #76

6.5t #71

INDC: GHG emission reduction of 15% compared to BAU scenario in 2030 Conditional target: 30% GHG emission reduction compared to BAU. (GWP unclear)

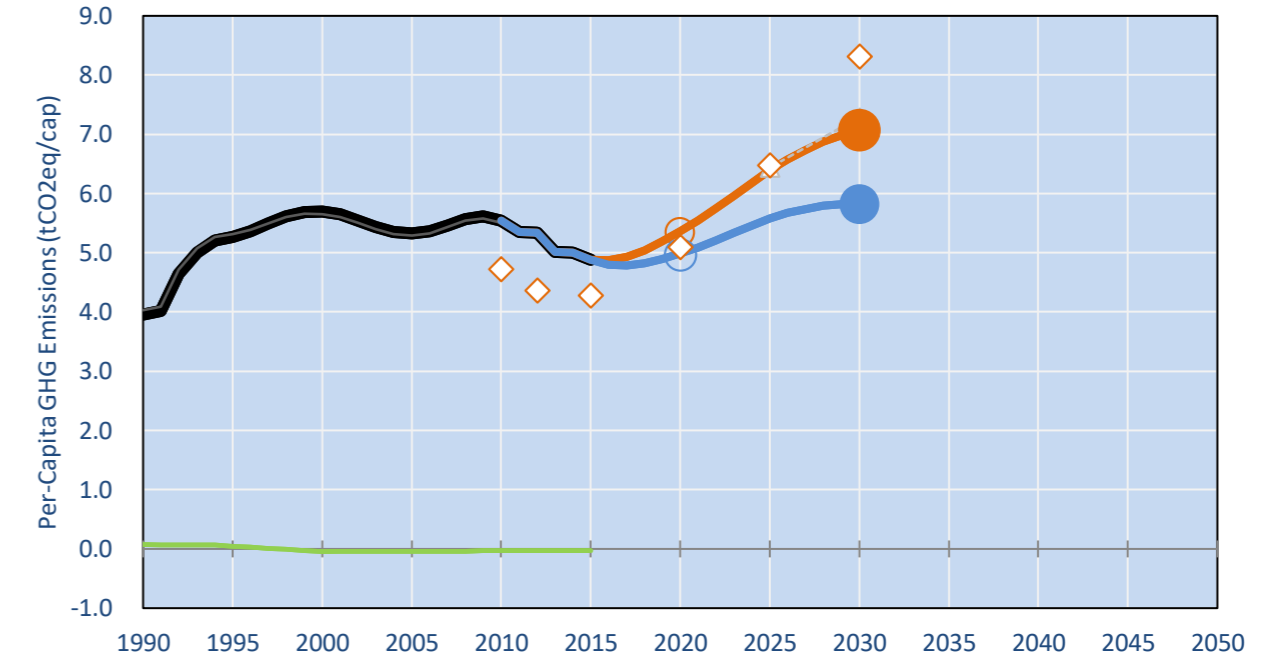
INDC Submitted: 30/09/2015

GHG Emissions

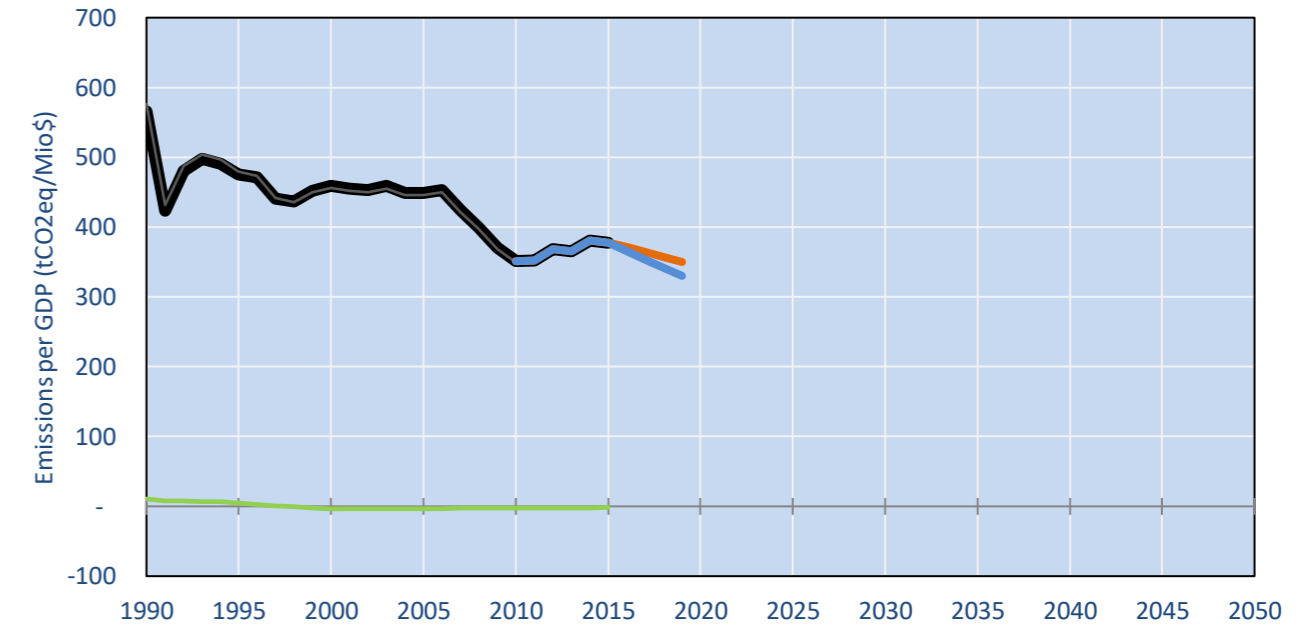


- Reference Total GHG excl. LULUCF
- Historical Covered Emissions, incl. LULUCF, if covered.
- LOW INDC Covered Emissions, incl. LULUCF if covered
- LOW INDC Covered + Non-Covered Emissions, excl. LULUCF
- HIGH INDC Covered Emissions, incl. LULUCF
- HIGH INDC Covered + Non-Covered Emissions, excl. LULUCF
- HIGH Cancun Pledges
- Reference LULUCF Emissions
- LOW INDC Levels
- LOW INDC Covered Emissions, excl. LULUCF
- HIGH INDC Levels
- HIGH INDC Covered Emissions, excl. LULUCF
- LOW Cancun Pledges
- INDC Lebanon (Approx.)
- Regional/Gas-specific BAU
- Not-covered GHG excl. LULUCF (Region Projection)

Per-Capita Emissions



GHG Emissions per GDP



2015 Total GHG Emissions excl. LULUCF

By Gas:

CO2 85.1%
CH4 11.4%
N2O 3.5%
F-gases 0.0%

By Sector:

Cat. 1 Energy 75.9%
Cat. 2, 3, 6 & 7 21.2%
Cat 4. Agriculture 2.9%
F-gases 0.0%

GHG Emissions

	1990	2000	2005	2010	2015	2020	2025	2030
(MtCO2eq/yr in GWP SAR)								
Assumed LULUCF Accounting Credits (-)/Debits (+)								
INDC covered LULUCF Emissions	0	0	0	0	0	0	0	0
INDC covered Emissions excl. LULUCF	11	18	21	24	29	32	35	38
Total GHG excl. LULUCF	11	18	21	24	29	32	35	38
Total GHG incl. LULUCF	11	18	21	24	28	31	34	37

Relative GHG Emissions

	1990	2000	2005	2010	2015	2020	2025	2030
Total excl. LULUCF								
Relative 1990	100%	172%	199%	225%	267%	295%	323%	351%
Relative 2000	58%	100%	115%	130%	155%	171%	188%	204%
Relative 2005	50%	87%	100%	113%	135%	149%	163%	177%
Relative 2010	45%	77%	88%	100%	119%	131%	144%	156%
Relative 2015	37%	64%	74%	84%	100%	110%	121%	131%

Per-Capita Emissions

	1990	2000	2005	2010	2015	2020	2025	2030
Total excl. LULUCF								
Population (Mio)	3	3	4	4	6	6	5	5
Per-Capita Emissions (tCO2eq/cap)	4.0	5.7	5.3	5.5	4.9	5.4	5.0	6.4
Relative 1990	100%	144%	135%	140%	123%	135%	126%	162%
Relative 2000	69%	100%	93%	97%	86%	88%	88%	125%
Relative 2005	74%	107%	100%	104%	92%	101%	94%	105%
Relative 2010	71%	103%	96%	100%	88%	97%	90%	101%
Relative 2015	81%	117%	109%	113%	100%	110%	102%	114%

Data Sources:

Cat1_CO2 PRIMAPHIST17
Cat2367_CO2 PRIMAPHIST17
Cat4_CO2 PRIMAPHIST17
Cat5_CO2 PRIMAPHIST17
Cat1_CH4 PRIMAPHIST17
Cat2367_CH4 PRIMAPHIST17
Cat4_CH4 PRIMAPHIST17
Cat5_CH4 PRIMAPHIST17
Cat1_N2O PRIMAPHIST17
Cat2367_N2O PRIMAPHIST17
Cat4_N2O PRIMAPHIST17
Cat5_N2O PRIMAPHIST17
Cat0_HFCs PRIMAPHIST17
Cat0_PFCs PRIMAPHIST17
Cat0_SF6 PRIMAPHIST17
Population UN 2015 Population Projections MEDIUM
GDP IMF WEO 2015, PPP adjusted GDP, constant 2009 prices...
IPCC WG3 Scenario IMAGE | AMPERE2-550-FullTech-HST
PRIMAPHIST16 description: www.pik-potsdam.de/primap-live/primap-hist/
Gratefully acknowledged in particular: PRIMAP, CAIT, CDIAC, EDGAR, IPCC, IEA, UNEP Gap Team, AMPERE Team and comments on earlier versions, in particular by Giacomo Grassi. Errors and misjudgements are our own. Malte Meinshausen & Ryan Alexander; The "Fiji COP23" Edition was enabled through support via the BMUB project UM14 41 4060
This Factsheet is available at www.climatecollege.unimelb.edu.au/indc-factsheets. Check out as well: www.climateactiontracker.org, www.mitigation-contributions.org, cait.wri.org, infographics.pbl.nl/indc, live.primap.org, www.unep.org/climatechange/pledgepipeline, and our twitter feed @ClimateCollege
climatecollege.unimelb.edu.au
AUSTRALIAN-GERMAN CLIMATE & ENERGY COLLEGE

Various 'fair' contributions for a global 'least-cost' 2°C path (total incl. LULUCF):

	2025 rel. 2010:	2030 rel. 2010:
LEADER	#N/A	LEADER #N/A
CDC	#N/A	CDC #N/A
ECPC50	#N/A	ECPC50 #N/A
ECPC90	#N/A	ECPC90 #N/A
GDR	#N/A	GDR #N/A
INDC HIGH	26%	INDC HIGH 29%
INDC LOW	44%	INDC LOW 57%

More info on www.mitigation-contributions.org

"Fair" contributions for a global 'least-cost' 2°C track:

LEADER Leader
CDC Common-but-diff. per-cap. convergence
ECPC50 Eq. cum. Per-capita since 1950
ECPC90 Eq. cum. Per-capita since 1990
GDR Greenhouse Development Rights
#N/A No available data