

Kuwait

Per-Capita Emissions in 2030 rel. 2015 (excl. LULUCF): **+7%**

INDC 2025

INDC 2030

2015 World Rank

2025 World Rank

2030 World Rank

Share of World Emissions excl. LULUCF (Rank):

0.3% #45

0.3% #43

0.3% #43

Per-Capita Emissions (tCO2eq/cap)

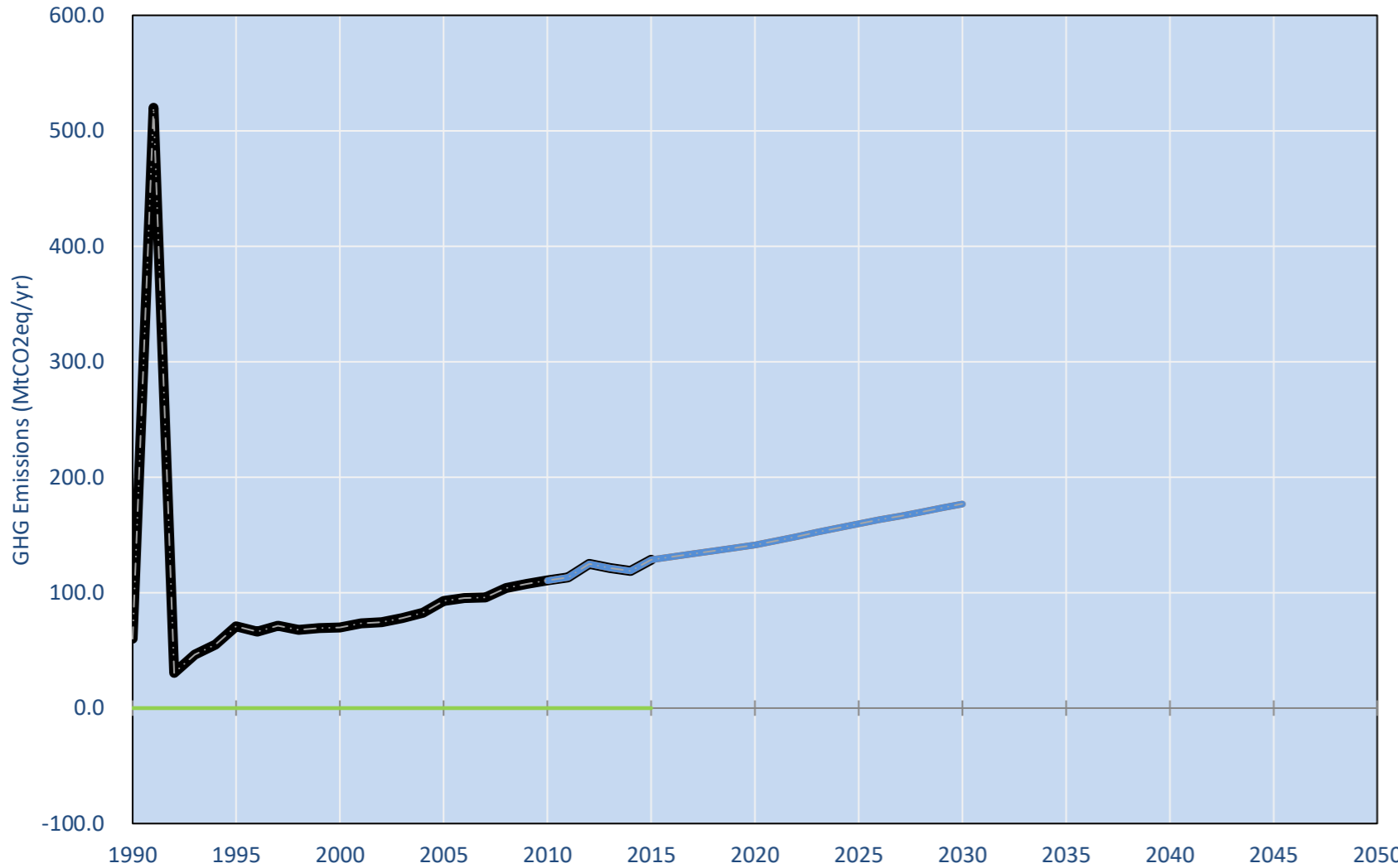
33t #4

34.2t #4

35.4t #5

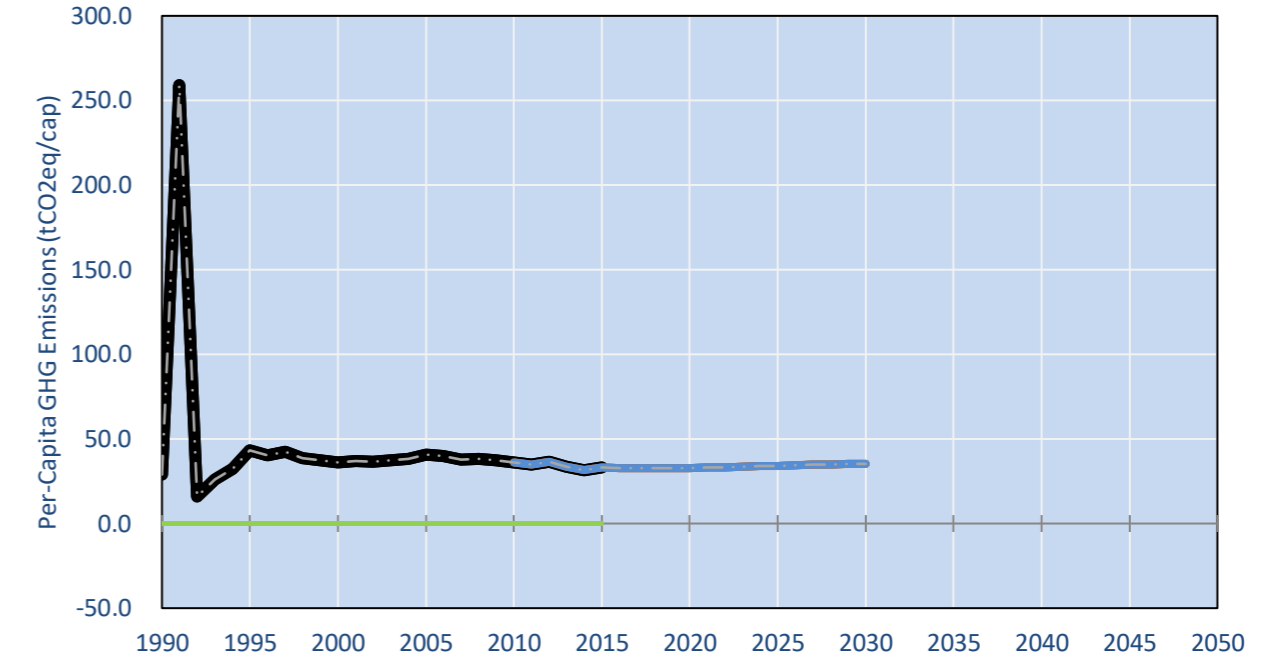
INDC Submitted: 25/11/2015

GHG Emissions

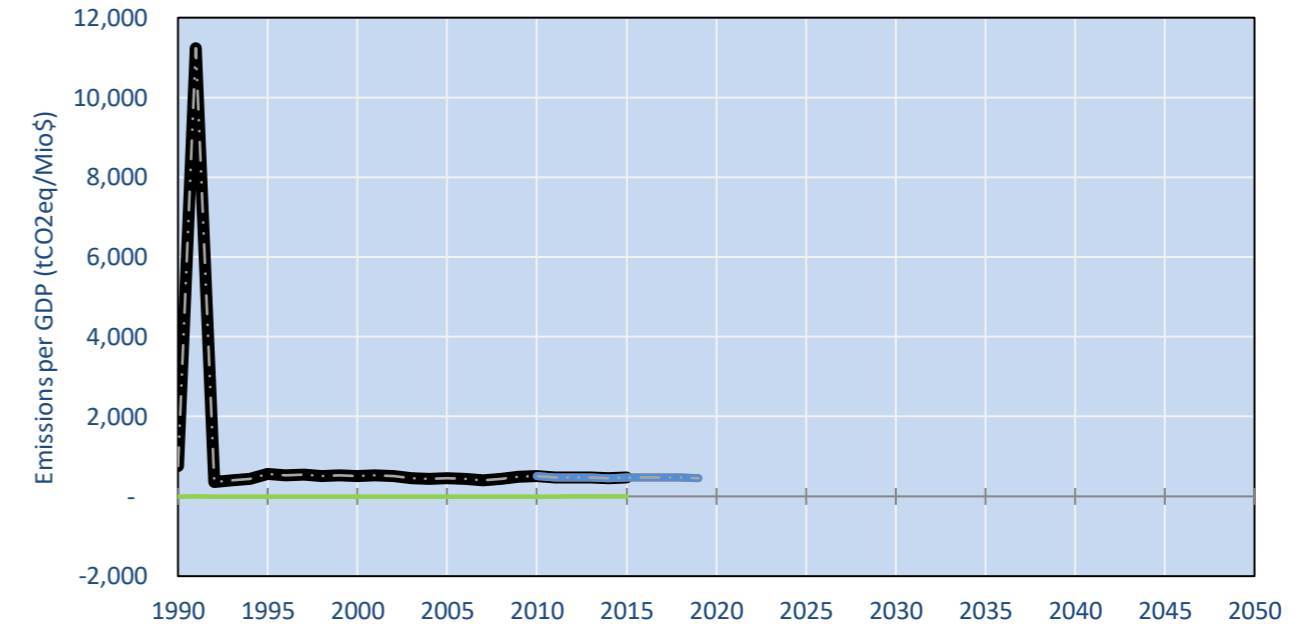


- Reference Total GHG excl. LULUCF
- Historical Covered Emissions, incl. LULUCF, if covered.
- - - LOW INDC Covered Emissions, incl. LULUCF if covered
- LOW INDC Covered + Non-Covered Emissions, excl. LULUCF
- - - HIGH INDC Covered Emissions, incl. LULUCF
- HIGH INDC Covered + Non-Covered Emissions, excl. LULUCF
- HIGH Cancun Pledges
- Not-covered GHG excl. LULUCF (Region Projection)
- Reference LULUCF Emissions
- LOW INDC Levels
- LOW INDC Covered Emissions, excl. LULUCF
- HIGH INDC Levels
- HIGH INDC Covered Emissions, excl. LULUCF
- LOW Cancun Pledges

Per-Capita Emissions



GHG Emissions per GDP



2015 Total GHG Emissions excl. LULUCF

By Gas:

CO2	84.5%
CH4	14.6%
N2O	0.6%
F-gases	0.3%

By Sector:

Cat. 1 Energy	98.8%
Cat. 2, 3, 6 & 7	5.6%
Cat 4. Agriculture	0.3%
F-gases	0.3%

GHG Emissions

	1990	2000	2005	2010	2015	2020		2025		2030	
(MtCO2eq/yr in GWP AR5)						low	high	low	high	low	high
Assumed LULUCF Accounting Credits (-)/Debits (+)	-	-	-	-	-	-	-	-	-	-	-
INDC covered LULUCF Emissions	-	-	-	-	-	-	-	-	-	-	-
INDC covered Emissions excl. LULUCF	-	-	-	-	-	-	-	-	-	-	-
Total GHG excl. LULUCF	60	70	93	110	128	141	141	160	160	177	177
Total GHG incl. LULUCF	60	70	93	110	128	141	141	160	160	177	177

Relative GHG Emissions

	1990	2000	2005	2010	2015	2020		2025		2030	
Total excl. LULUCF						low	high	low	high	low	high
Relative 1990	100%	117%	155%	184%	214%	236%	236%	267%	267%	295%	295%
Relative 2000	86%	100%	132%	158%	183%	202%	202%	228%	228%	253%	253%
Relative 2005	65%	76%	100%	119%	139%	153%	153%	172%	172%	191%	191%
Relative 2010	54%	63%	84%	100%	116%	128%	128%	145%	145%	160%	160%
Relative 2015	47%	55%	72%	86%	100%	110%	110%	124%	124%	138%	138%

Per-Capita Emissions

	1990	2000	2005	2010	2015	2020		2025		2030	
Total excl. LULUCF						low	high	low	high	low	high
Population (Mio)	2	2	2	3	4	4	4	5	5	5	5
Per-Capita Emissions (tCO2eq/cap)	29.1	36.2	40.9	36.1	33.0	32.7	32.7	34.2	34.2	35.4	35.4
Relative 1990	100%	125%	141%	124%	113%	112%	112%	117%	117%	122%	122%
Relative 2000	80%	100%	113%	100%	91%	90%	90%	94%	94%	98%	98%
Relative 2005	71%	89%	100%	88%	81%	80%	80%	84%	84%	87%	87%
Relative 2010	81%	100%	113%	100%	91%	91%	91%	95%	95%	98%	98%
Relative 2015	88%	110%	124%	109%	100%	99%	99%	104%	104%	107%	107%

Data Sources:

Cat1_CO2 PRIMAPHIST17
 Cat2367_CO2 PRIMAPHIST17
 Cat4_CO2 PRIMAPHIST17
 Cat5_CO2 PRIMAPHIST17
 Cat1_CH4 PRIMAPHIST17
 Cat2367_CH4 PRIMAPHIST17
 Cat4_CH4 PRIMAPHIST17
 Cat5_CH4 PRIMAPHIST17
 Cat1_N2O PRIMAPHIST17
 Cat2367_N2O PRIMAPHIST17
 Cat4_N2O PRIMAPHIST17
 Cat5_N2O PRIMAPHIST17
 Cat0_HFCs PRIMAPHIST17
 Cat0_PFCs PRIMAPHIST17
 Cat0_SF6 PRIMAPHIST17
 Population UN 2015 Population Projections MEDIUM
 GDP IMF WEO 2015, PPP adjusted GDP, constant 2009 prices...
 IPCC WG3 Scenario IMAGE | AMPERE2-550-FullTech-HST
 PRIMAPHIST16 description: www.pik-potsdam.de/primap-live/primap-hist/
 Gratefully acknowledged in particular: PRIMAP, CAIT, CDIAC, EDGAR, IPCC, IEA, UNEP Gap Team, AMPERE Team and comments on earlier versions, in particular by Giacomo Grassi. Errors and misjudgements are our own. Malte Meinshausen & Ryan Alexander; The "Fiji COP23" Edition was enabled through support via the BMUB project UM14 41 4060
 This Factsheet is available at www.climatecollege.unimelb.edu.au/indc-factsheets. Check out as well: www.climateactiontracker.org, www.mitigation-contributions.org, cait.wri.org, infographics.pbl.nl/indc, live.primap.org, www.unep.org/climatechange/pledgepipeline, and our twitter feed @ClimateCollege
 climatecollege.unimelb.edu.au
 AUSTRALIAN-GERMAN CLIMATE & ENERGY COLLEGE

Various 'fair' contributions for a global 'least-cost' 2°C path (total incl. LULUCF):

2025 rel. 2010:		2030 rel. 2010:	
LEADER	#N/A	LEADER	#N/A
CDC	-6%	CDC	-16%
ECPC50	-58%	ECPC50	-97%
ECPC90	-17%	ECPC90	-34%
GDR	0%	GDR	-5%
INDC HIGH	45%	INDC HIGH	60%
INDC LOW	45%	INDC LOW	60%



Shown fair contributions only indicative

"Fair" contributions for a global 'least-cost' 2°C track:

- LEADER Leader
- CDC Common-but-diff. per-cap. convergence
- ECPC50 Eq. cum. Per-capita since 1950
- ECPC90 Eq. cum. Per-capita since 1990
- GDR Greenhouse Development Rights
- #N/A No available data