



# Guatemala

Per-Capita Emissions in 2030 rel. 2015 (excl. LULUCF): **+3%**

NDC 2025

NDC 2030

2015 World Rank

2025 World Rank

2030 World Rank

Share of World Emissions excl. LULUCF (Rank):

0.1% #104

0.1% #104

0.1% #99

Per-Capita Emissions (tCO2eq/cap)

1.9t #156

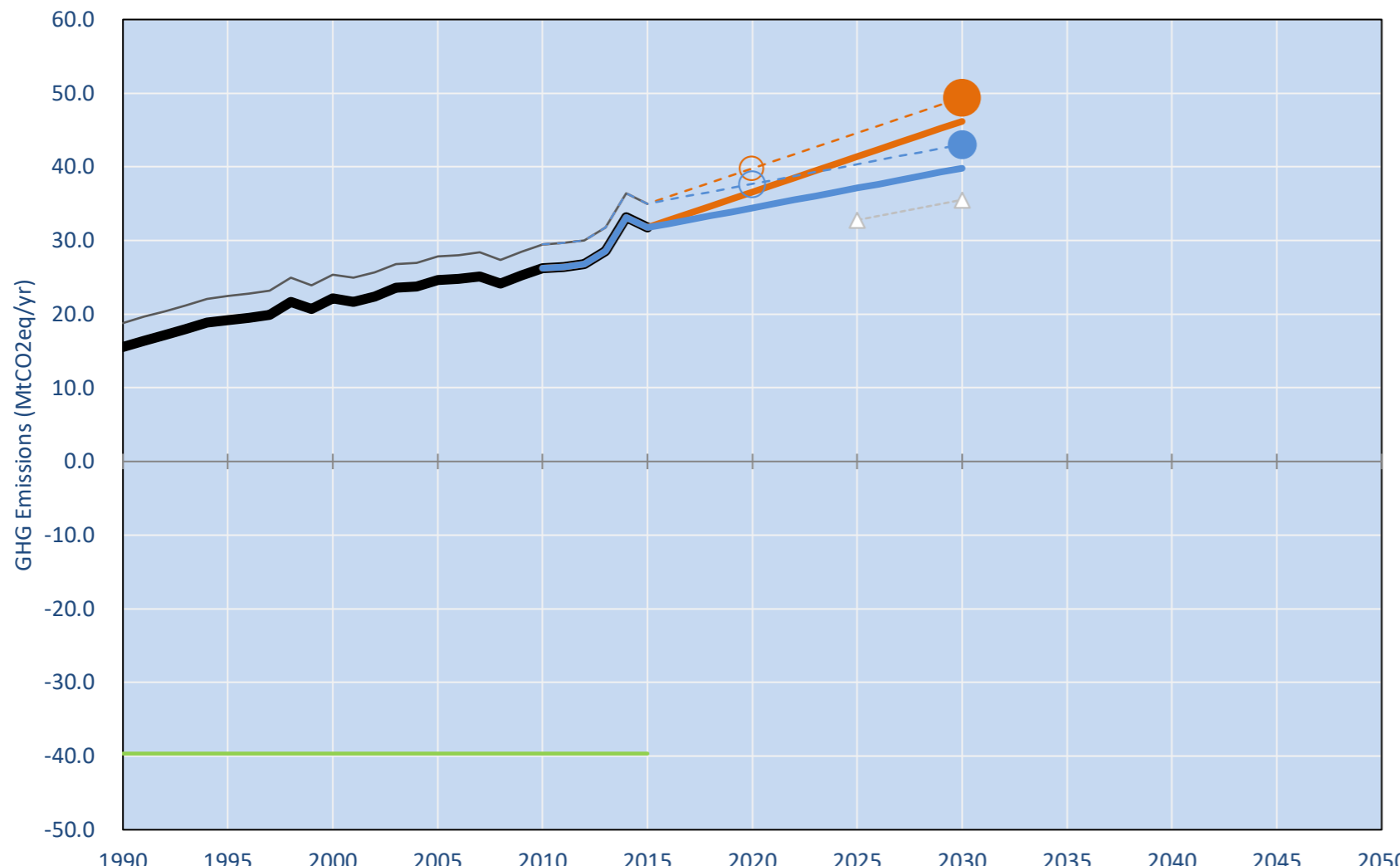
2t #159

2t #153

NDC: 11.2% GHG emissions reduction compared to BAU by 2030 Conditional target: up to 22.6% reduction pending on international and private resources. (GWP SAR)

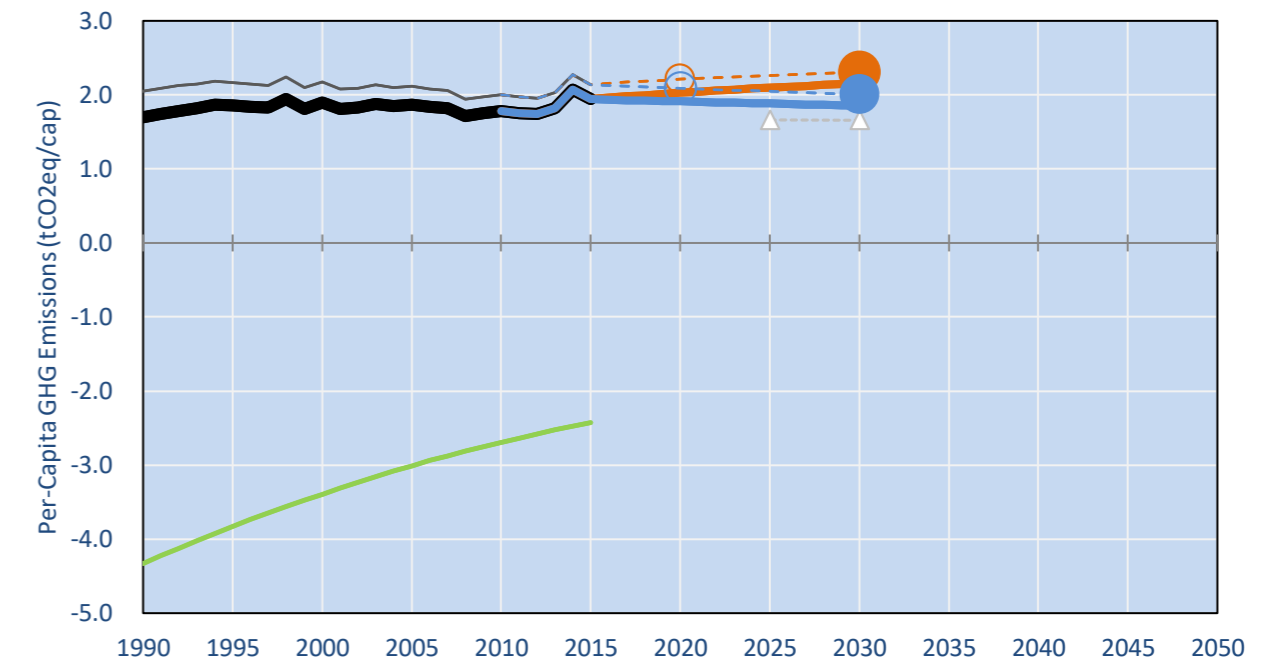
INDC Submitted: 30/09/2015

## GHG Emissions

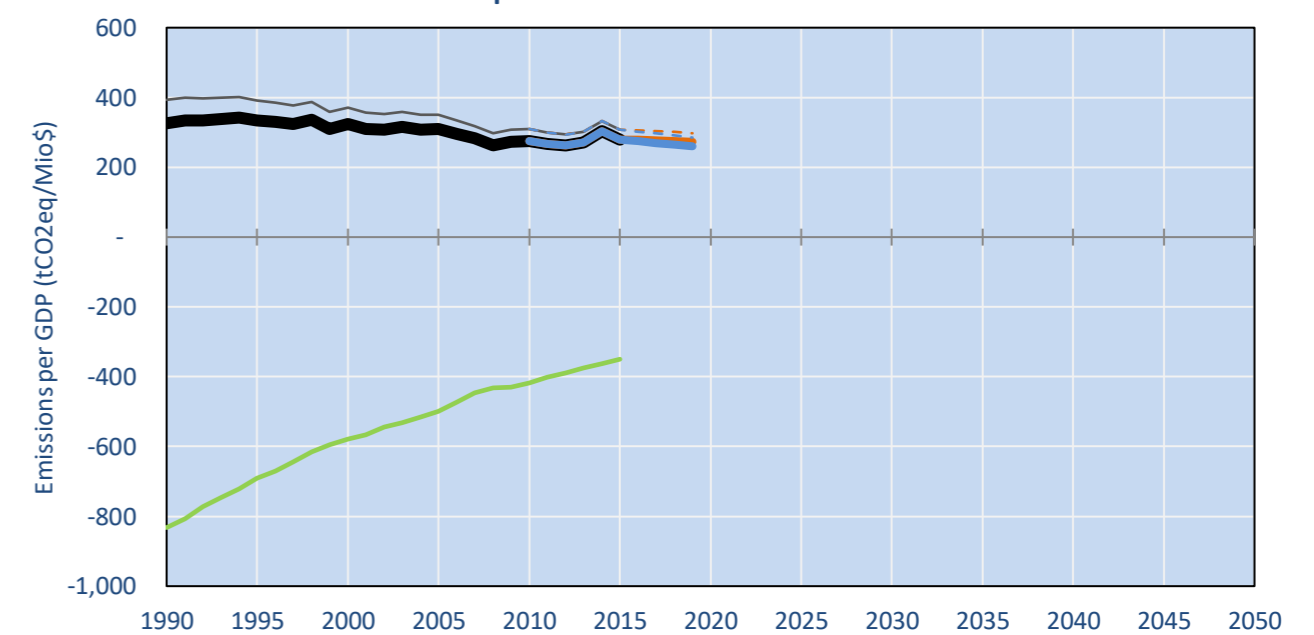


- Reference Total GHG excl. LULUCF
- Historical Covered Emissions, incl. LULUCF, if covered.
- LOW INDC Covered Emissions, incl. LULUCF if covered
- LOW INDC Covered + Non-Covered Emissions, excl. LULUCF
- HIGH INDC Covered Emissions, incl. LULUCF
- HIGH INDC Covered + Non-Covered Emissions, excl. LULUCF
- HIGH Cancun Pledges
- Reference LULUCF Emissions
- LOW INDC Levels
- LOW INDC Covered Emissions, excl. LULUCF
- HIGH INDC Levels
- HIGH INDC Covered Emissions, excl. LULUCF
- LOW Cancun Pledges
- Regional/Gas-specific BAU
- Not-covered GHG excl. LULUCF (Region Projection)

## Per-Capita Emissions



## GHG Emissions per GDP



## 2015 Total GHG Emissions excl. LULUCF

By Gas:

CO2 51.9%  
CH4 30.2%  
N2O 17.9%  
F-gases 0.0%

By Sector:

Cat. 1 Energy 51.1%  
Cat. 2, 3, 6 & 7 13.6%  
Cat 4. Agriculture 35.3%  
F-gases 0.0%

## GHG Emissions

	1990	2000	2005	2010	2015	2020		2025		2030	
(MtCO2eq/yr in GWP AR5)						low	high	low	high	low	high
Assumed LULUCF Accounting Credits (-)/Debits (+)											
NDC covered LULUCF Emissions	3	3	3	3	3	3	3	3	3	3	3
NDC covered Emissions excl. LULUCF	16	22	25	26	32	37	34	41	37	46	40
Total GHG excl. LULUCF	16	22	25	26	32	37	34	41	37	46	40
Total GHG incl. LULUCF	-	24	18	15	13	8	3	5	2	3	7

## Relative GHG Emissions

	1990	2000	2005	2010	2015	2020		2025		2030	
Total excl. LULUCF						low	high	low	high	low	high
Relative 1990	100%	142%	158%	169%	204%	235%	221%	266%	239%	297%	256%
Relative 2000	70%	100%	111%	119%	143%	165%	156%	187%	168%	209%	180%
Relative 2005	63%	90%	100%	107%	129%	149%	140%	168%	151%	188%	162%
Relative 2010	59%	84%	94%	100%	121%	139%	131%	158%	141%	176%	152%
Relative 2015	49%	70%	78%	83%	100%	115%	108%	130%	117%	145%	125%

## Per-Capita Emissions

	1990	2000	2005	2010	2015	2020		2025		2030	
Total excl. LULUCF						low	high	low	high	low	high
Population (Mio)	9	12	13	15	16	18	18	20	20	21	21
Per-Capita Emissions (tCO2eq/cap)	1.7	1.9	1.9	1.8	1.9	2.0	1.9	2.1	1.9	2.2	1.9
Relative 1990	100%	112%	110%	105%	114%	120%	113%	124%	111%	127%	109%
Relative 2000	90%	100%	99%	94%	103%	107%	101%	111%	99%	114%	98%
Relative 2005	91%	101%	100%	95%	104%	109%	102%	112%	101%	115%	100%
Relative 2010	95%	106%	105%	100%	109%	114%	107%	118%	106%	121%	104%
Relative 2015	87%	97%	96%	92%	100%	104%	98%	108%	97%	111%	96%

## Data Sources:

Cat1\_CO2 PRIMAPHIST17  
Cat2367\_CO2 PRIMAPHIST17  
Cat4\_CO2 PRIMAPHIST17  
Cat5\_CO2 PRIMAPHIST17  
Cat1\_CH4 PRIMAPHIST17  
Cat2367\_CH4 PRIMAPHIST17  
Cat4\_CH4 PRIMAPHIST17  
Cat5\_CH4 PRIMAPHIST17  
Cat1\_N2O PRIMAPHIST17  
Cat2367\_N2O PRIMAPHIST17  
Cat4\_N2O PRIMAPHIST17  
Cat5\_N2O PRIMAPHIST17  
Cat0\_HFCs PRIMAPHIST17  
Cat0\_PFCs PRIMAPHIST17  
Cat0\_SF6 PRIMAPHIST17  
Population UN 2015 Population Projections MEDIUM  
GDP IMF WEO 2015, PPP adjusted GDP, constant 2009 prices...  
IPCC WG3 Scenario IMAGE | AMPERE2-550-FullTech-HST  
PRIMAPHIST16 description: www.pik-potsdam.de/primap-live/primap-hist/  
Gratefully acknowledged in particular: PRIMAP, CAIT, CDIAC, EDGAR, IPCC, IEA, UNEP Gap Team, AMPERE Team and comments on earlier versions, in particular by Giacomo Grassi. Errors and misjudgements are our own. Malte Meinshausen & Ryan Alexander; The "Fiji COP23" Edition was enabled through support via the BMUB project UM14 41 4060  
This Factsheet is available at www.climatecollege.unimelb.edu.au/indc-factsheets. Check out as well: www.climateactiontracker.org, www.mitigation-contributions.org, cait.wri.org, infographics.pbl.nl/indc, live.primap.org, www.unep.org/climatechange/pledgepipeline, and our twitter feed @ClimateCollege  
climatecollege.unimelb.edu.au  
AUSTRALIAN-GERMAN CLIMATE & ENERGY COLLEGE



## Various 'fair' contributions for a global 'least-cost' 2°C path (total incl. LULUCF):

2025 rel. 2010:	2030 rel. 2010:
LEADER	#N/A
CDC	#N/A
ECPC50	#N/A
ECPC90	#N/A
GDR	#N/A
INDC HIGH	#N/A
INDC LOW	#N/A

## More info on www.mitigation-contributions.org

No results shown, as 2010 total incl. LULUCF emissions below zero  
"Fair" contributions for a global 'least-cost' 2°C track:  
LEADER Leader  
CDC Common-but-diff. per-cap. convergence  
ECPC50 Eq. cum. Per-capita since 1950  
ECPC90 Eq. cum. Per-capita since 1990  
GDR Greenhouse Development Rights  
#N/A No available data