



# Guatemala

Per-Capita Emissions in 2030 rel. 2015 (excl. LULUCF): **+6%**

NDC 2025

NDC 2030

2015 World Rank

2025 World Rank

2030 World Rank

Share of World Emissions excl. LULUCF (Rank):

0.1% #103

0.1% #101

0.1% #99

Per-Capita Emissions (tCO2eq/cap)

2t #154

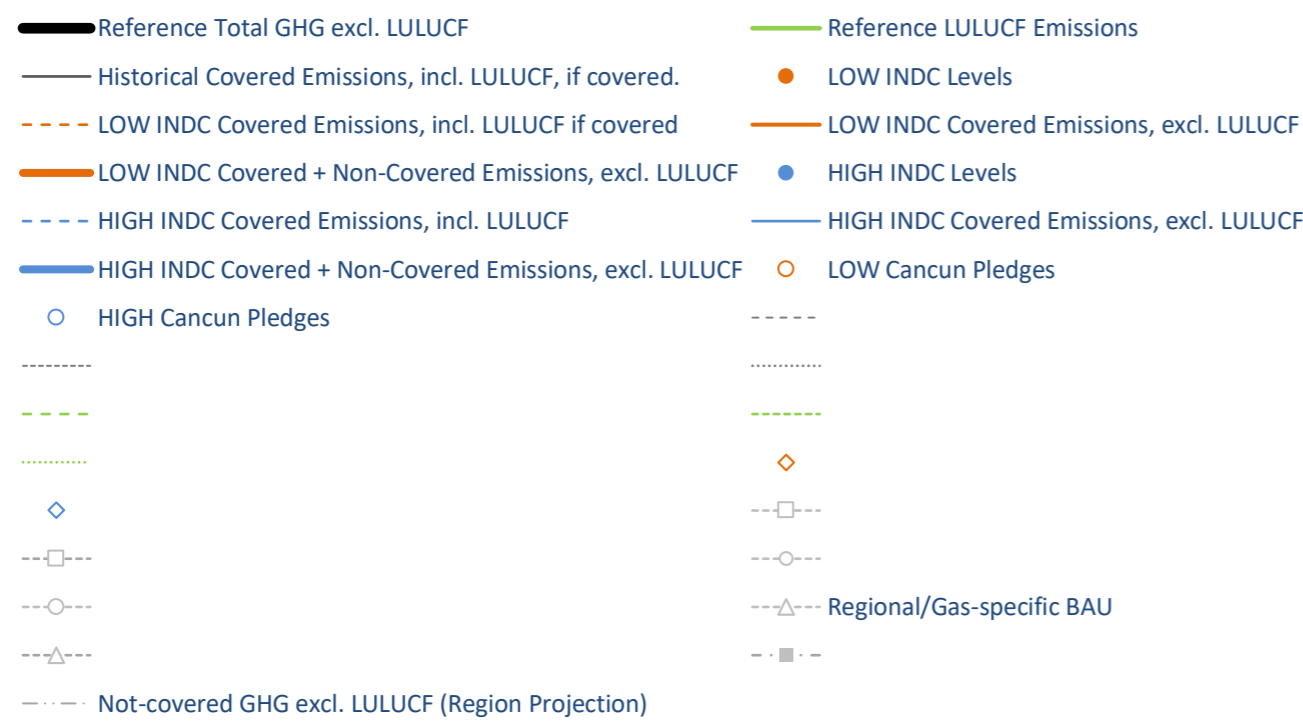
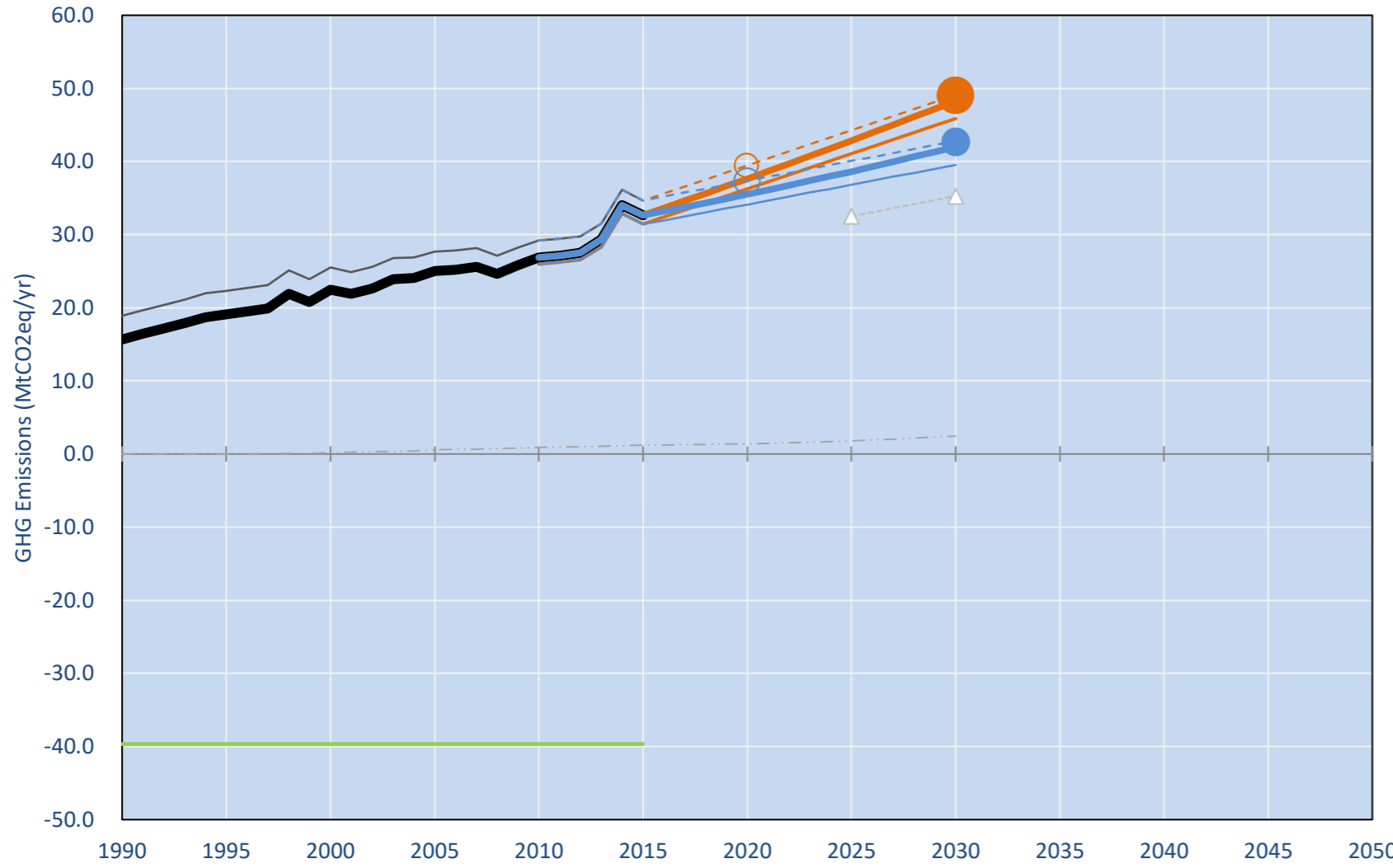
2.1t #156

2.1t #149

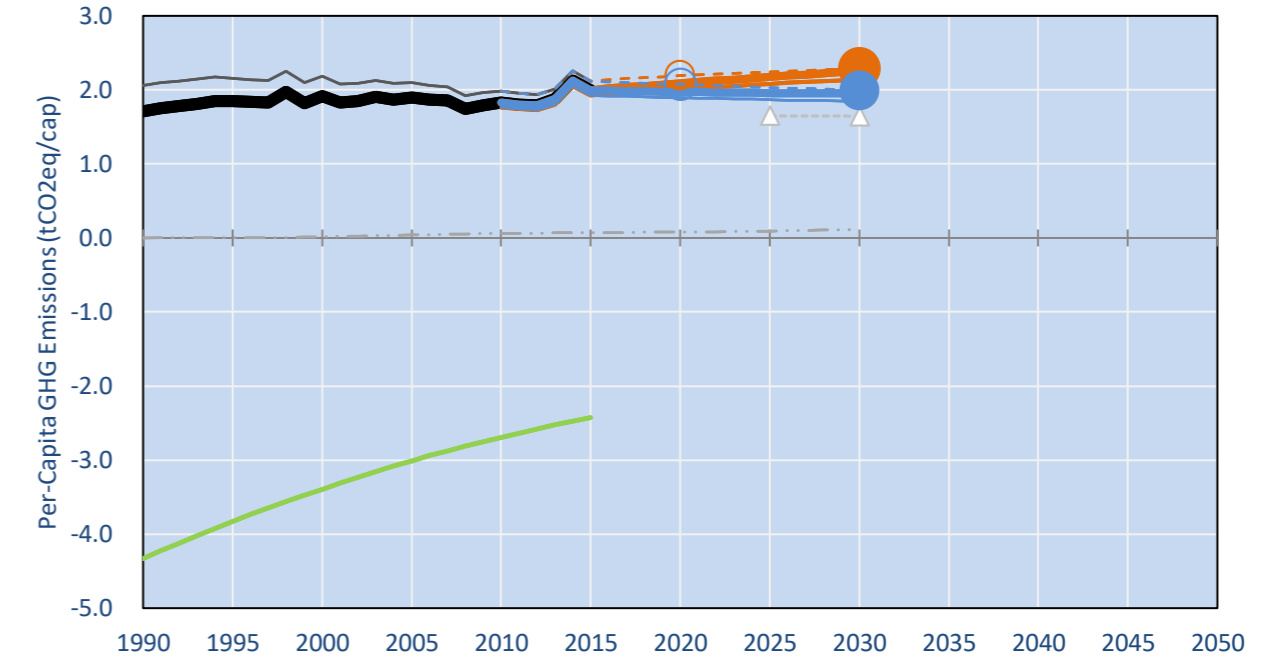
NDC: 11.2% GHG emissions reduction compared to BAU by 2030 Conditional target: up to 22.6% reduction pending on international and private resources. (GWP SAR)

INDC Submitted: 30/09/2015

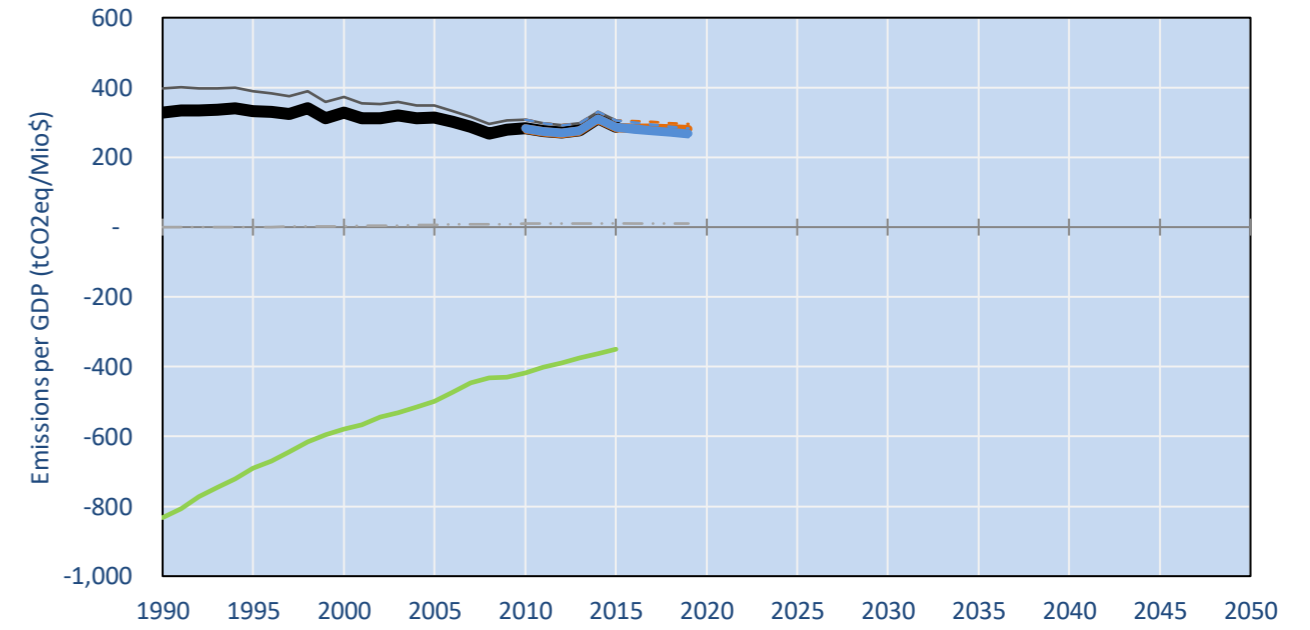
## GHG Emissions



## Per-Capita Emissions

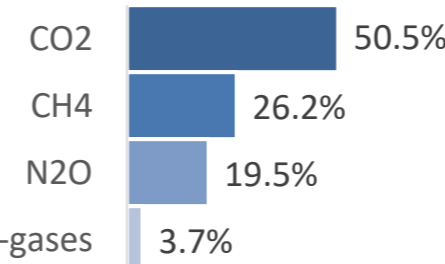


## GHG Emissions per GDP

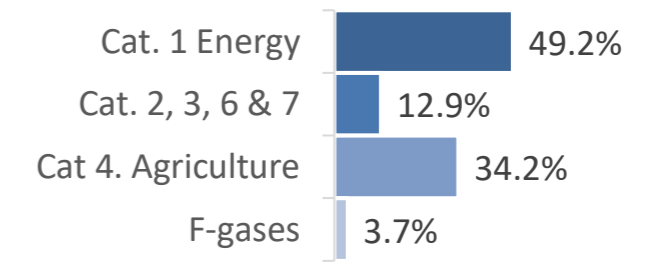


## 2015 Total GHG Emissions excl. LULUCF

By Gas:



By Sector:



## GHG Emissions

	1990	2000	2005	2010	2015	2020		2025		2030	
						low	high	low	high	low	high
(MtCO2eq/yr in GWP AR4)											
Assumed LULUCF Accounting Credits (-)/Debits (+)											
NDC covered LULUCF Emissions	3	3	3	3	3	3	3	3	3	3	3
NDC covered Emissions excl. LULUCF	16	22	24	26	31	36	34	41	37	46	40
Total GHG excl. LULUCF	16	22	25	27	33	38	36	43	39	48	42
Total GHG incl. LULUCF	-	24	17	15	13	7	2	4	3	1	9

## Relative GHG Emissions

	1990	2000	2005	2010	2015	2020		2025		2030	
						low	high	low	high	low	high
Total excl. LULUCF											
Relative 1990	100%	143%	160%	172%	208%	240%	227%	273%	247%	308%	268%
Relative 2000	70%	100%	111%	120%	145%	168%	158%	191%	172%	215%	187%
Relative 2005	63%	90%	100%	107%	130%	150%	142%	171%	154%	193%	168%
Relative 2010	58%	83%	93%	100%	121%	140%	132%	159%	144%	180%	156%
Relative 2015	48%	69%	77%	82%	100%	115%	109%	131%	118%	148%	129%

## Per-Capita Emissions

	1990	2000	2005	2010	2015	2020		2025		2030	
						low	high	low	high	low	high
Total excl. LULUCF											
Population (Mio)	9	12	13	15	16	18	18	20	20	21	21
Per-Capita Emissions (tCO2eq/cap)	1.7	1.9	1.9	1.8	2.0	2.1	2.0	2.2	2.0	2.3	2.0
Relative 1990	100%	112%	111%	107%	117%	122%	115%	127%	115%	132%	115%
Relative 2000	89%	100%	99%	95%	104%	109%	103%	113%	102%	117%	102%
Relative 2005	90%	101%	100%	96%	105%	110%	104%	114%	103%	119%	103%
Relative 2010	94%	105%	104%	100%	109%	114%	108%	119%	107%	124%	107%
Relative 2015	86%	96%	95%	91%	100%	105%	99%	109%	98%	113%	98%

## Data Sources:

Cat1_CO2	PRIMAPHIST17	Cat5A1_CO2	UNFCCC CRF + Nat. Comms.
Cat2367_CO2	PRIMAPHIST17	Cat5A2_CO2	UNFCCC CRF + Nat. Comms.
Cat4_CO2	PRIMAPHIST17	Cat5LtoNonFL_CO2	UNFCCC CRF + Nat. Comms.
Cat5_CO2	PRIMAPHIST17	Cat5GMCMWWM_C	UNFCCC CRF
Cat1_CH4	PRIMAPHIST17	Cat5A1ForestFires	UNFCCC Cat5 + EDGAR(IPCC Database)
Cat2367_CH4	PRIMAPHIST17	Cat5A1HWP_CO2	UNFCCC CRF + Nat. Comms.
Cat4_CH4	PRIMAPHIST17	Cat5bisA_CO2	UNFCCC CRF + NATCOMM.
Cat5_CH4	PRIMAPHIST17	Cat5bisB_CO2	UNFCCC CRF + NATCOMM.
Cat1_N2O	PRIMAPHIST17	Cat5bisC_CO2	UNFCCC CRF + NATCOMM.
Cat2367_N2O	PRIMAPHIST17	Cat5bisD_CO2	UNFCCC CRF + NATCOMM.
Cat4_N2O	PRIMAPHIST17	Cat5bisE_CO2	UNFCCC CRF + NATCOMM.
Cat5_N2O	PRIMAPHIST17	PRO_WM_Cat5_G	UNFCCC Annex I Reports
Cat0_HFCs	PRIMAPHIST17	Metric	GWP AR4
Cat0_PFCs	PRIMAPHIST17		
Cat0_SF6	PRIMAPHIST17		
Population	UN 2015 Population Projections MEDIUM		
GDP	IMF WEO 2015, PPP adjusted GDP, constant 2009 prices...		
	IPCC WG3 Scenario IMAGE   AMPERE2-550-FullTech-HST		
	PRIMAPHIST16 description: www.pik-potsdam.de/primap-live/primap-hist/		
	Gratefully acknowledged in particular: PRIMAP, CAIT, CDIAC, EDGAR, IPCC, IEA, UNEP Gap Team, AMPERE Team and comments on earlier versions, in particular by Giacomo Grassi. Errors and misjudgements are our own. Malte Meinshausen & Ryan Alexander; The "Fiji COP23" Edition was enabled through support via the BMUB project UM14 41 4060		
	This Factsheet is available at www.climatecollege.unimelb.edu.au/indc-factsheets. Check out as well: www.climateactiontracker.org, www.mitigation-contributions.org, cait.wri.org, infographics.pbl.nl/indc, live.primap.org, www.unep.org/climatechange/pledgepipeline, and our twitter feed @ClimateCollege		
		climatecollege.unimelb.edu.au	
		AUSTRALIAN-GERMAN CLIMATE & ENERGY COLLEGE	

## Various 'fair' contributions for a global 'least-cost' 2°C path (total incl. LULUCF):

## More info on www.mitigation-contributions.org

2025 rel. 2010:		2030 rel. 2010:		No results shown, as 2010 total incl. LULUCF emissions below zero	
LEADER	#N/A	LEADER	#N/A	"Fair" contributions for a global 'least-cost' 2°C track:	
CDC	#N/A	CDC	#N/A	LEADER	Leader
ECPC50	#N/A	ECPC50	#N/A	CDC	Common-but-diff. per-cap. convergence
ECPC90	#N/A	ECPC90	#N/A	ECPC50	Eq. cum. Per-capita since 1950
GDR	#N/A	GDR	#N/A	ECPC90	Eq. cum. Per-capita since 1990
INDC HIGH	#N/A	INDC HIGH	#N/A	GDR	Greenhouse Development Rights
INDC LOW	#N/A	INDC LOW	#N/A	#N/A	No available data