

Gabon

Per-Capita Emissions in 2030 rel. 2015 (excl. LULUCF): **-4%**

NDC 2025

NDC 2030

2015 World Rank

2025 World Rank

2030 World Rank

-33% rel. BAU of 15 Mt

Share of World Emissions excl. LULUCF (Rank):

0.0% #146

0.0% #146

0.0% #144

Per-Capita Emissions (tCO2eq/cap)

5.2t #94

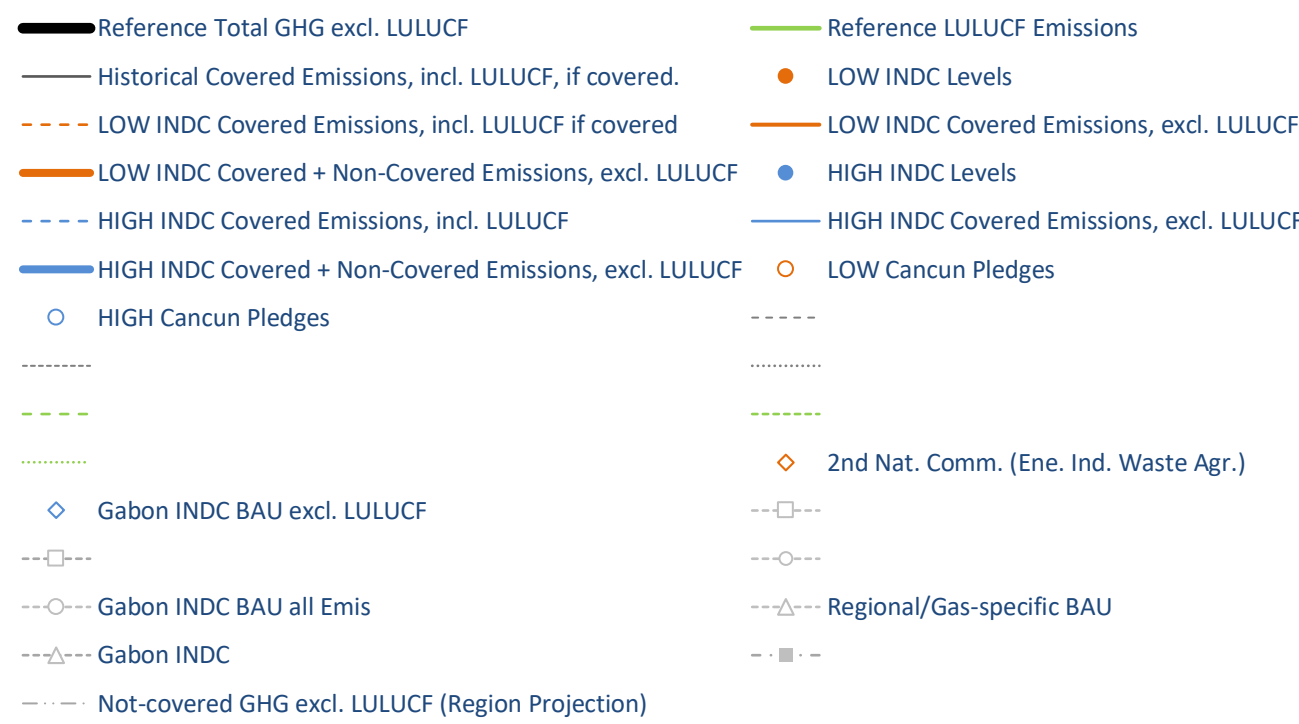
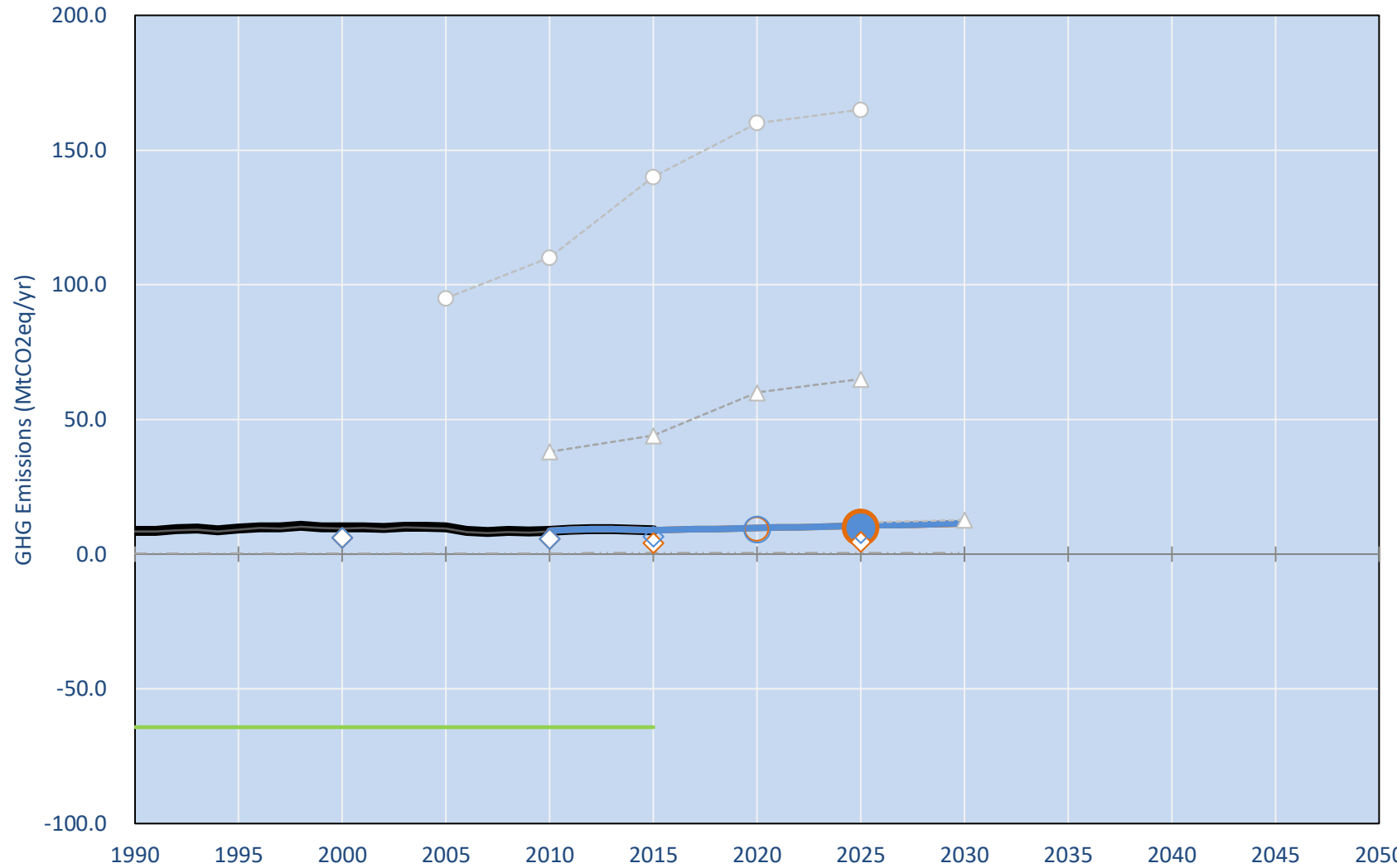
5t #97

4.9t #96

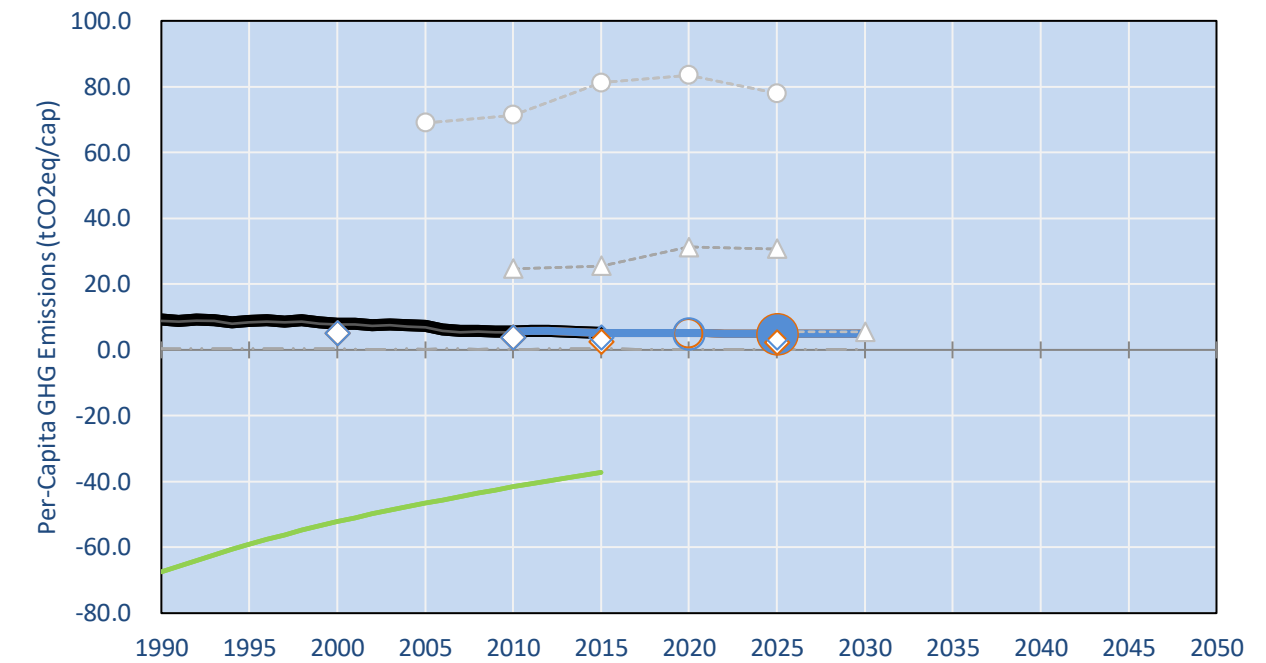
NDC: At least 50 % GHG reduction below BAU by 2025, not including carbon stock in forests. (GWP unclear)

INDC Submitted: 1/04/2015

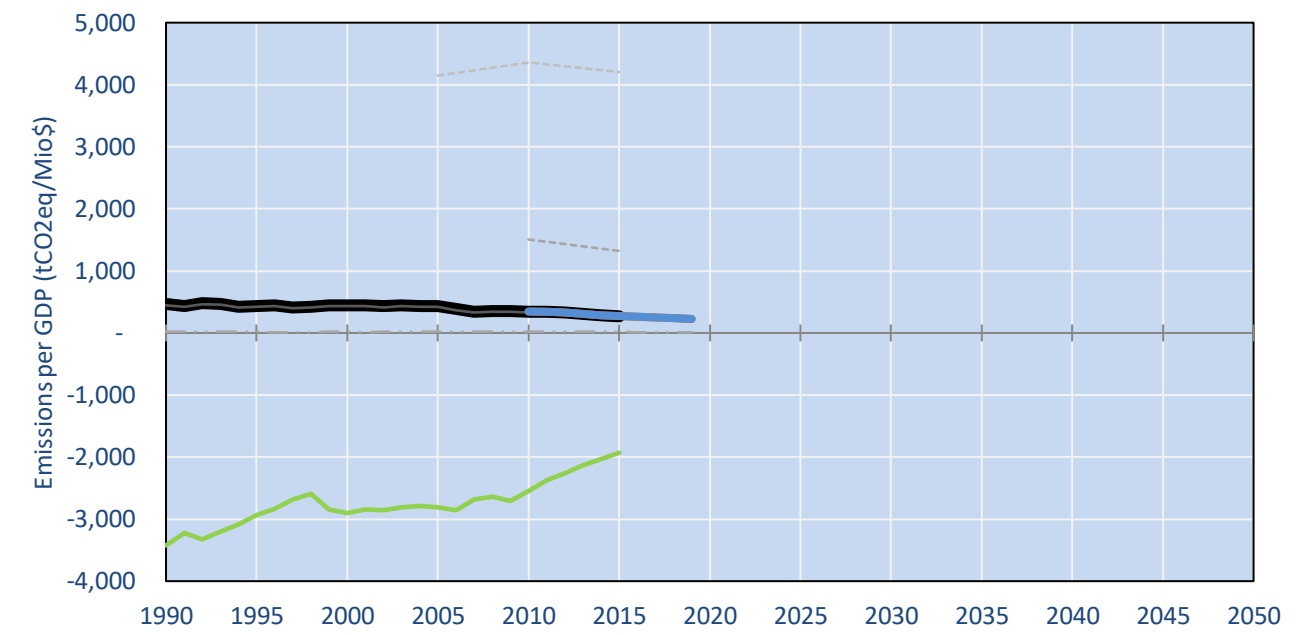
GHG Emissions



Per-Capita Emissions

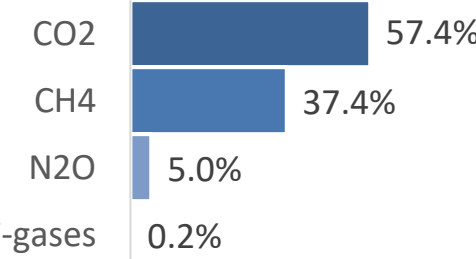


GHG Emissions per GDP

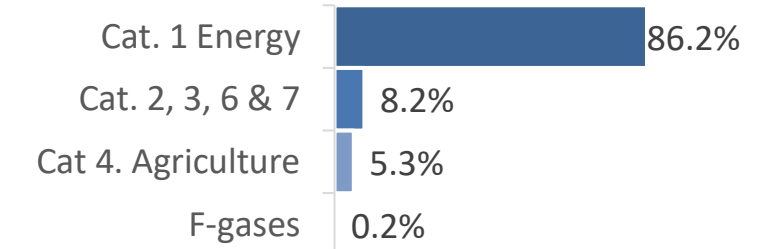


2015 Total GHG Emissions excl. LULUCF

By Gas:



By Sector:



GHG Emissions

	1990	2000	2005	2010	2015	2020	2025	2030	
(MtCO2eq/yr in GWP AR4)						low	high	low	high
Assumed LULUCF Accounting Credits (-)/Debits (+)									
NDC covered LULUCF Emissions									
NDC covered Emissions excl. LULUCF	8	10	10	8	8	9	9	10	10
Total GHG excl. LULUCF	9	10	10	9	9	10	10	11	11
Total GHG incl. LULUCF	-56	-54	-54	-56	-55	-55	-55	-54	-54

Relative GHG Emissions

	1990	2000	2005	2010	2015	2020	2025	2030	
Total excl. LULUCF						low	high	low	high
Relative 1990	100%	113%	114%	100%	102%	111%	111%	121%	132%
Relative 2000	88%	100%	101%	88%	90%	98%	98%	107%	116%
Relative 2005	87%	99%	100%	87%	89%	97%	97%	106%	115%
Relative 2010	100%	113%	114%	100%	102%	111%	111%	121%	132%
Relative 2015	98%	111%	112%	98%	100%	109%	109%	119%	129%

Per-Capita Emissions

	1990	2000	2005	2010	2015	2020	2025	2030	
Total excl. LULUCF						low	high	low	high
Population (Mio)	1	1	1	2	2	2	2	2	2
Per-Capita Emissions (tCO2eq/cap)	9.1	8.0	7.2	5.6	5.2	5.0	5.0	4.9	4.9
Relative 1990	100%	88%	79%	62%	57%	55%	55%	54%	54%
Relative 2000	114%	100%	90%	71%	65%	63%	62%	62%	62%
Relative 2005	126%	111%	100%	78%	71%	70%	69%	68%	68%
Relative 2010	162%	142%	128%	100%	92%	89%	88%	87%	87%
Relative 2015	177%	155%	140%	109%	100%	98%	97%	96%	96%

Data Sources:

Cat1_CO2	PRIMAPHIST17	Cat5A1_CO2	UNFCCC CRF + Nat. Comms.
Cat2367_CO2	PRIMAPHIST17	Cat5A2_CO2	UNFCCC CRF + Nat. Comms.
Cat4_CO2	PRIMAPHIST17	Cat5LtoNonFL_CO2	UNFCCC CRF + Nat. Comms.
Cat5_CO2	PRIMAPHIST17	Cat5GCMCMWM_C	UNFCCC CRF
Cat1_CH4	PRIMAPHIST17	Cat5A1ForestFires	UNFCCC Cat5 + EDGAR(IPCC Database)
Cat2367_CH4	PRIMAPHIST17	Cat5A1HWP_CO2	UNFCCC CRF + Nat. Comms.
Cat4_CH4	PRIMAPHIST17	Cat5bisA_CO2	UNFCCC CRF + NATCOMM.
Cat5_CH4	PRIMAPHIST17	Cat5bisB_CO2	UNFCCC CRF + NATCOMM.
Cat1_N2O	PRIMAPHIST17	Cat5bisC_CO2	UNFCCC CRF + NATCOMM.
Cat2367_N2O	PRIMAPHIST17	Cat5bisD_CO2	UNFCCC CRF + NATCOMM.
Cat4_N2O	PRIMAPHIST17	Cat5bisE_CO2	UNFCCC CRF + NATCOMM.
Cat5_N2O	PRIMAPHIST17	PRO_WM_Cat5_G	UNFCCC Annex I Reports
Cat0_HFCs	PRIMAPHIST17	Metric	GWP AR4
Cat0_PFCs	PRIMAPHIST17		
Cat0_SF6	PRIMAPHIST17		
Population	UN 2015 Population Projections MEDIUM		
GDP	IMF WEO 2015, PPP adjusted GDP, constant 2009 prices...		
	IPCC WG3 Scenario IMAGE AMPERE2-550-FullTech-HST		
	PRIMAPHIST16 description: www.pik-potsdam.de/primap-live/primap-hist/		
	Gratefully acknowledged in particular: PRIMAP, CAIT, CDIAC, EDGAR, IPCC, IEA, UNEP Gap Team, AMPERE Team and comments on earlier versions, in particular by Giacomo Grassi. Errors and misjudgements are our own. Malte Meinshausen & Ryan Alexander; The "Fiji COP23" Edition was enabled through support via the BMUB project UM14 41 4060		
	This Factsheet is available at www.climatecollege.unimelb.edu.au/indc-factsheets. Check out as well: www.climateactiontracker.org, www.mitigation-contributions.org, cait.wri.org, infographics.pbl.nl/indc, live.primap.org, www.unep.org/climatechange/pledgepipeline, and our twitter feed @ClimateCollege		

climatecollege.unimelb.edu.au



Various 'fair' contributions for a global 'least-cost' 2°C path (total incl. LULUCF):

2025 rel. 2010:	2030 rel. 2010:
LEADER	#N/A
CDC	#N/A
ECPC50	#N/A
ECPC90	#N/A
GDR	#N/A
INDC HIGH	#N/A
INDC LOW	#N/A

More info on www.mitigation-contributions.org

#N/A	No results shown, as 2010 total incl. LULUCF emissions below zero
#N/A	"Fair" contributions for a global 'least-cost' 2°C track:
#N/A	LEADER Leader
#N/A	CDC Common-but-diff. per-cap. convergence
#N/A	ECPC50 Eq. cum. Per-capita since 1950
#N/A	ECPC90 Eq. cum. Per-capita since 1990
#N/A	GDR Greenhouse Development Rights
#N/A	#N/A No available data