

# Finland

Per-Capita Emissions in 2030 rel. 2015 (excl. LULUCF): **-10%**

NDC 2025

NDC 2030

2015 World Rank

2025 World Rank

2030 World Rank

Share of World Emissions excl. LULUCF (Rank):

0.1% #78

0.1% #85

0.1% #88

Per-Capita Emissions (tCO2eq/cap)

10.2t #38

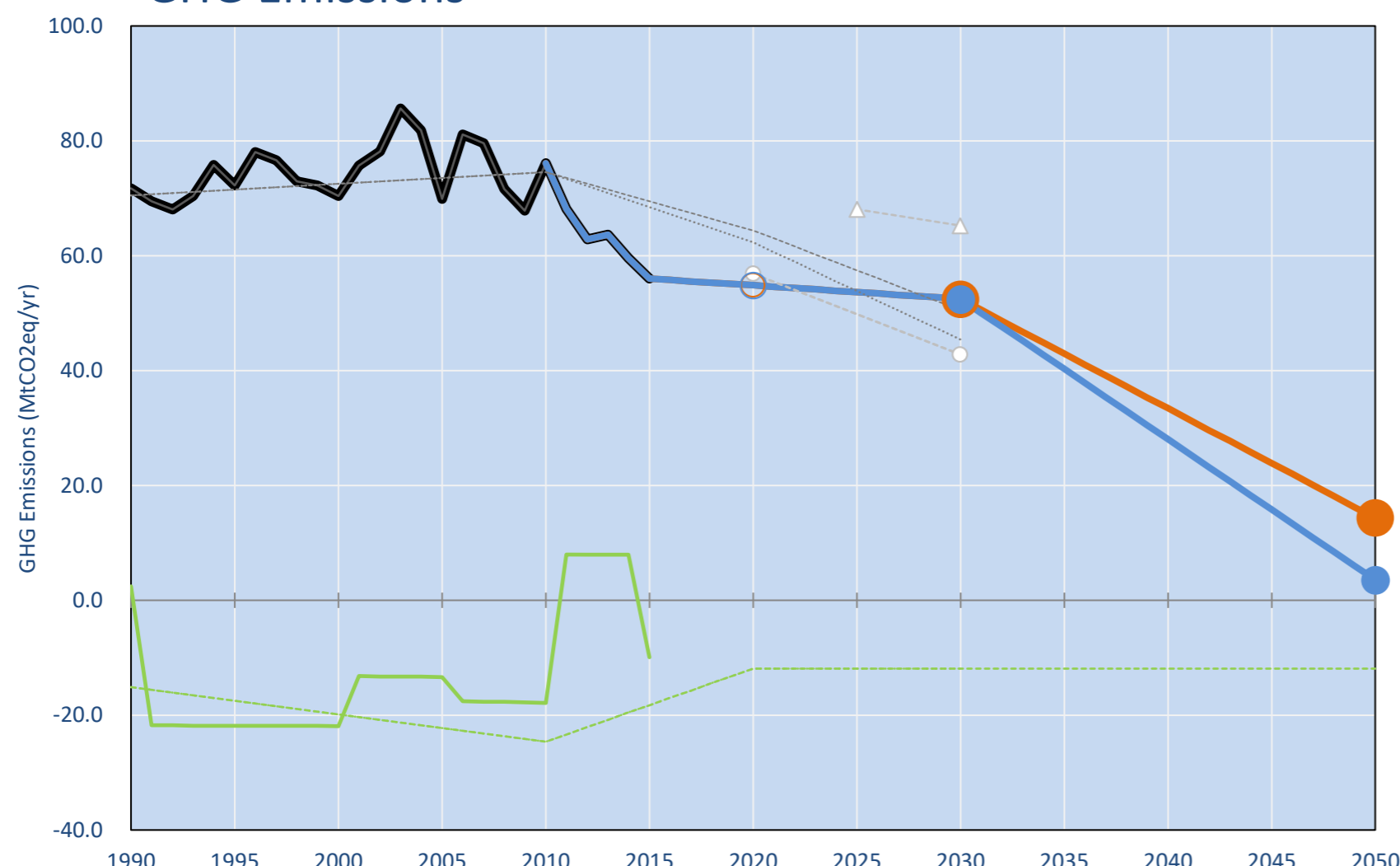
9.5t #38

9.2t #37

NDC: Contributing to the joint EU28 INDC with intra-EU split up of Emission Trading System and Effort Sharing Sectors.. (GWP AR4)

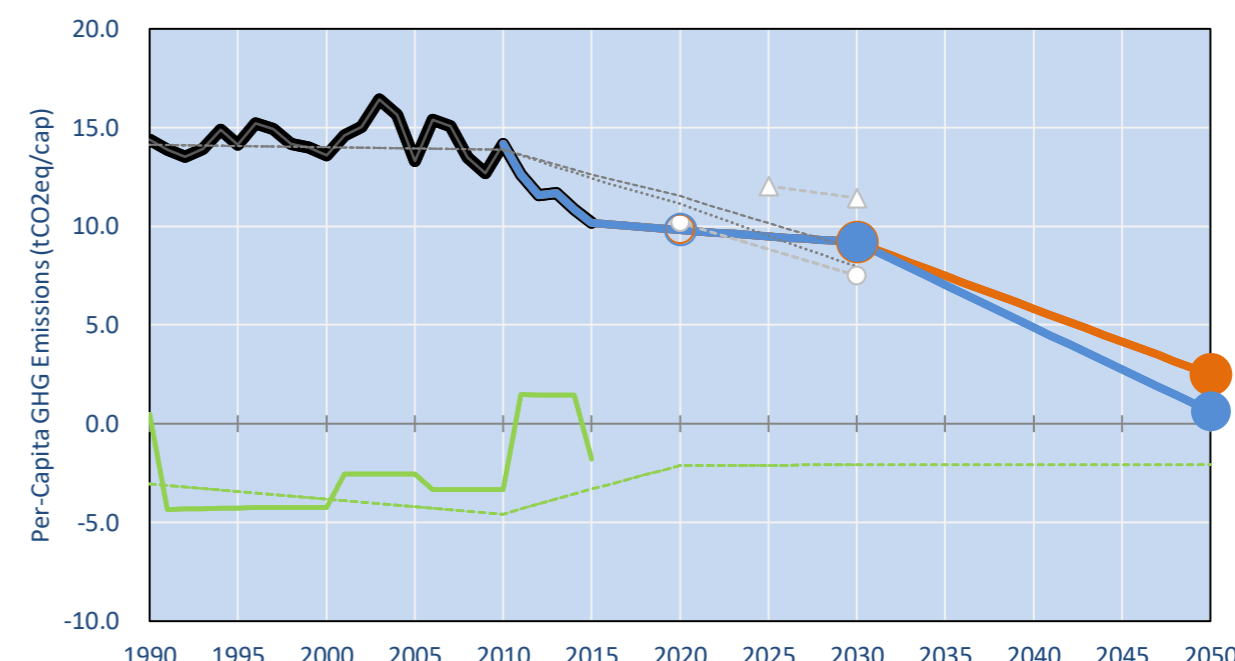
INDC Submitted: 6/03/2015

## GHG Emissions

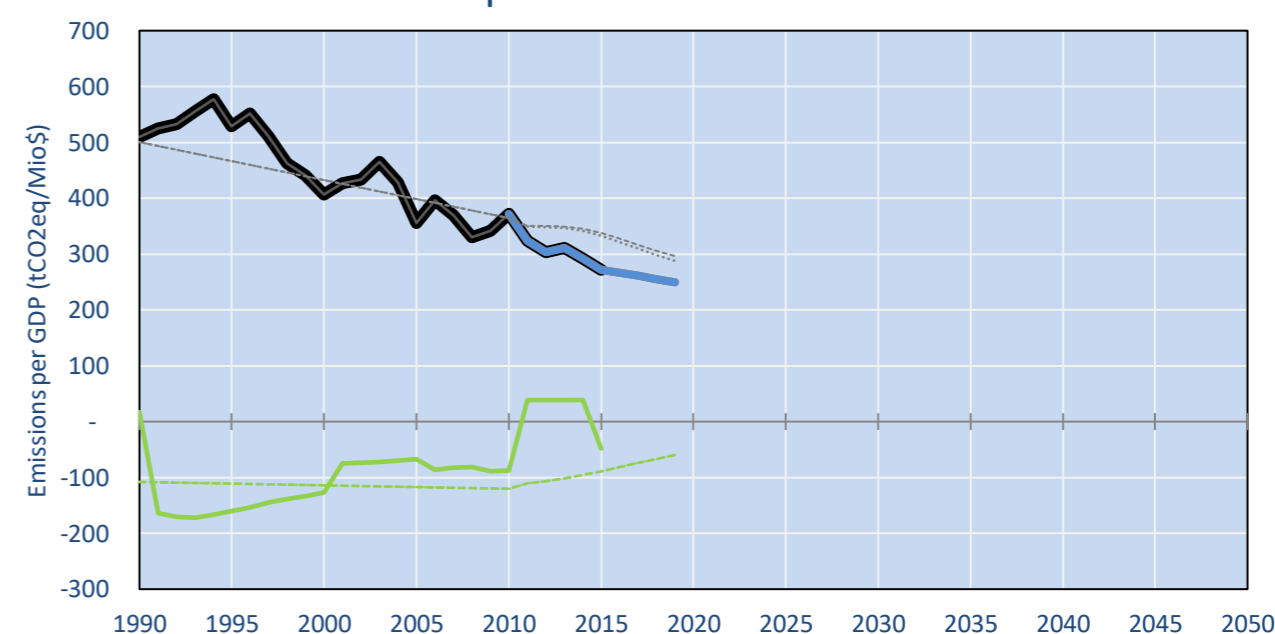


- Reference Total GHG excl. LULUCF
- Historical Covered Emissions, incl. LULUCF, if covered.
- LOW INDC Covered Emissions, incl. LULUCF if covered
- LOW INDC Covered + Non-Covered Emissions, excl. LULUCF
- HIGH INDC Covered Emissions, incl. LULUCF
- HIGH INDC Covered + Non-Covered Emissions, excl. LULUCF
- HIGH Cancun Pledges
- Reference LULUCF Emissions
- LOW INDC Levels
- LOW INDC Covered Emissions, excl. LULUCF
- HIGH INDC Levels
- HIGH INDC Covered Emissions, excl. LULUCF
- LOW Cancun Pledges
- WM Total excl. LULUCF Projections
- WAM Total excl. LULUCF Projections
- WM LULUCF Projections
- WAM LULUCF Projections
- Approx. 2030 EU MS target (-37% ESD + -43% ETS)
- Regional/Gas-specific BAU
- Not-covered GHG excl. LULUCF (Region Projection)

## Per-Capita Emissions



## GHG Emissions per GDP



## 2015 Total GHG Emissions excl. LULUCF

By Gas:

CO2	79.5%
CH4	8.7%
N2O	8.9%
F-gases	2.8%

By Sector:

Cat. 1 Energy	73.1%
Cat. 2, 3, 6 & 7	12.5%
Cat 4. Agriculture	11.6%
F-gases	2.8%

## GHG Emissions

	1990	2000	2005	2010	2015	2020		2025		2030	
(MtCO2eq/yr in GWP AR4)						low	high	low	high	low	high
Assumed LULUCF Accounting Credits (-)/Debits (+)											
NDC covered LULUCF Emissions											
NDC covered Emissions excl. LULUCF	72	70	70	76	56	55	55	54	54	52	52
Total GHG excl. LULUCF	72	70	70	76	56	55	55	54	54	52	52
Total GHG incl. LULUCF	74	48	57	58	46	43	43	42	42	41	41

## Relative GHG Emissions

	1990	2000	2005	2010	2015	2020		2025		2030	
Total excl. LULUCF						low	high	low	high	low	high
Relative 1990	100%	98%	97%	106%	78%	76%	76%	75%	75%	73%	73%
Relative 2000	102%	100%	99%	108%	80%	78%	78%	76%	76%	75%	75%
Relative 2005	103%	101%	100%	109%	80%	78%	78%	77%	77%	75%	75%
Relative 2010	94%	92%	92%	100%	74%	72%	72%	71%	71%	69%	69%
Relative 2015	128%	126%	125%	136%	100%	98%	98%	96%	96%	94%	94%

## Per-Capita Emissions

	1990	2000	2005	2010	2015	2020		2025		2030	
Total excl. LULUCF						low	high	low	high	low	high
Population (Mio)	5	5	5	5	6	6	6	6	6	6	6
Per-Capita Emissions (tCO2eq/cap)	14.4	13.6	13.3	14.2	10.2	9.8	9.8	9.5	9.5	9.2	9.2
Relative 1990	100%	95%	93%	99%	71%	68%	68%	66%	66%	64%	64%
Relative 2000	106%	100%	98%	104%	75%	72%	72%	70%	70%	68%	68%
Relative 2005	108%	102%	100%	106%	76%	74%	74%	71%	71%	69%	69%
Relative 2010	101%	96%	94%	100%	72%	69%	69%	67%	67%	65%	65%
Relative 2015	141%	134%	131%	139%	100%	96%	96%	93%	93%	90%	90%

## Data Sources:

Cat1_CO2	PRIMAPHIST17	Cat5A1_CO2	UNFCCC CRF + Nat. Comms.
Cat2367_CO2	PRIMAPHIST17	Cat5A2_CO2	UNFCCC CRF + Nat. Comms.
Cat4_CO2	PRIMAPHIST17	Cat5LtoNonFL_CO	UNFCCC CRF + Nat. Comms.
Cat5_CO2	PRIMAPHIST17	Cat5GMCMWMM_C	UNFCCC CRF + Nat. Comms.
Cat1_CH4	PRIMAPHIST17	Cat5A1ForestFires	UNFCCC Cat5 + EDGAR(IPCC Database)
Cat2367_CH4	PRIMAPHIST17	Cat5A1HWP_CO2	UNFCCC CRF + Nat. Comms.
Cat4_CH4	PRIMAPHIST17	Cat5bisA_CO2	UNFCCC CRF + NATCOMM.
Cat5_CH4	PRIMAPHIST17	Cat5bisB_CO2	UNFCCC CRF + NATCOMM.
Cat1_N2O	PRIMAPHIST17	Cat5bisC_CO2	UNFCCC CRF + NATCOMM.
Cat2367_N2O	PRIMAPHIST17	Cat5bisD_CO2	UNFCCC CRF + NATCOMM.
Cat4_N2O	PRIMAPHIST17	Cat5bisE_CO2	UNFCCC CRF + NATCOMM.
Cat5_N2O	PRIMAPHIST17	PRO_WM_Cat5_G	UNFCCC Annex I Reports
Cat0_HFCs	PRIMAPHIST17	Metric	GWP AR4
Cat0_PFCs	PRIMAPHIST17		
Cat0_SF6	PRIMAPHIST17		
Population	UN 2015 Population Projections MEDIUM		
GDP	IMF WEO 2015, PPP adjusted GDP, constant 2009 prices...		
	IPCC WG3 Scenario IMAGE   AMPERE2-550-FullTech-HST		
	PRIMAPHIST16 description: www.pik-potsdam.de/primap-live/primap-hist/		
	Gratefully acknowledged in particular: PRIMAP, CAIT, CDIAC, EDGAR, IPCC, IEA, UNEP Gap Team, AMPERE Team and comments on earlier versions, in particular by Giacomo Grassi. Errors and misjudgements are our own. Malte Meinshausen & Ryan Alexander; The "Fiji COP23" Edition was enabled through support via the BMUB project UM14 41 4060		
	This Factsheet is available at www.climatecollege.unimelb.edu.au/indc-factsheets. Check out as well: www.climateactiontracker.org, www.mitigation-contributions.org, cait.wri.org, infographics.pbl.nl/indc, live.primap.org, www.unep.org/climatechange/pledgepipeline, and our twitter feed @ClimateCollege		
		climatecollege.unimelb.edu.au	
		AUSTRALIAN-GERMAN CLIMATE & ENERGY COLLEGE	

## Various 'fair' contributions for a global 'least-cost' 2°C path (total incl. LULUCF):

2025 rel. 2010:		2030 rel. 2010:	
LEADER	#N/A	LEADER	#N/A
CDC	-36%	CDC	-44%
ECPC50	-45%	ECPC50	-56%
ECPC90	-35%	ECPC90	-43%
GDR	-112%	GDR	-129%
INDC HIGH	-28%	INDC HIGH	-30%
INDC LOW	-28%	INDC LOW	-30%

## More info on www.mitigation-contributions.org

Shown fair contributions only indicative  
"Fair" contributions for a global 'least-cost' 2°C track:  
LEADER Leader  
CDC Common-but-diff. per-cap. convergence  
ECPC50 Eq. cum. Per-capita since 1950  
ECPC90 Eq. cum. Per-capita since 1990  
GDR Greenhouse Development Rights  
#N/A No available data