

Shown: 2025 & 2030: Min/max of unconditional and conditional targets

Shown are averages for low and high or conditional and unconditional INDCs and their inter-extrapolations

Paris Agreement ratified on: 22/04/2016

Per-Capita Emissions in 2030 rel. 2015 (excl. LULUCF): **+35%**

**Fiji**

NDC 2025

NDC 2030

2015 World Rank

2025 World Rank

2030 World Rank

Share of World Emissions excl. LULUCF (Rank):

0.0% #166

0.0% #163

0.0% #161

Per-Capita Emissions (tCO2eq/cap)

2.6t #133

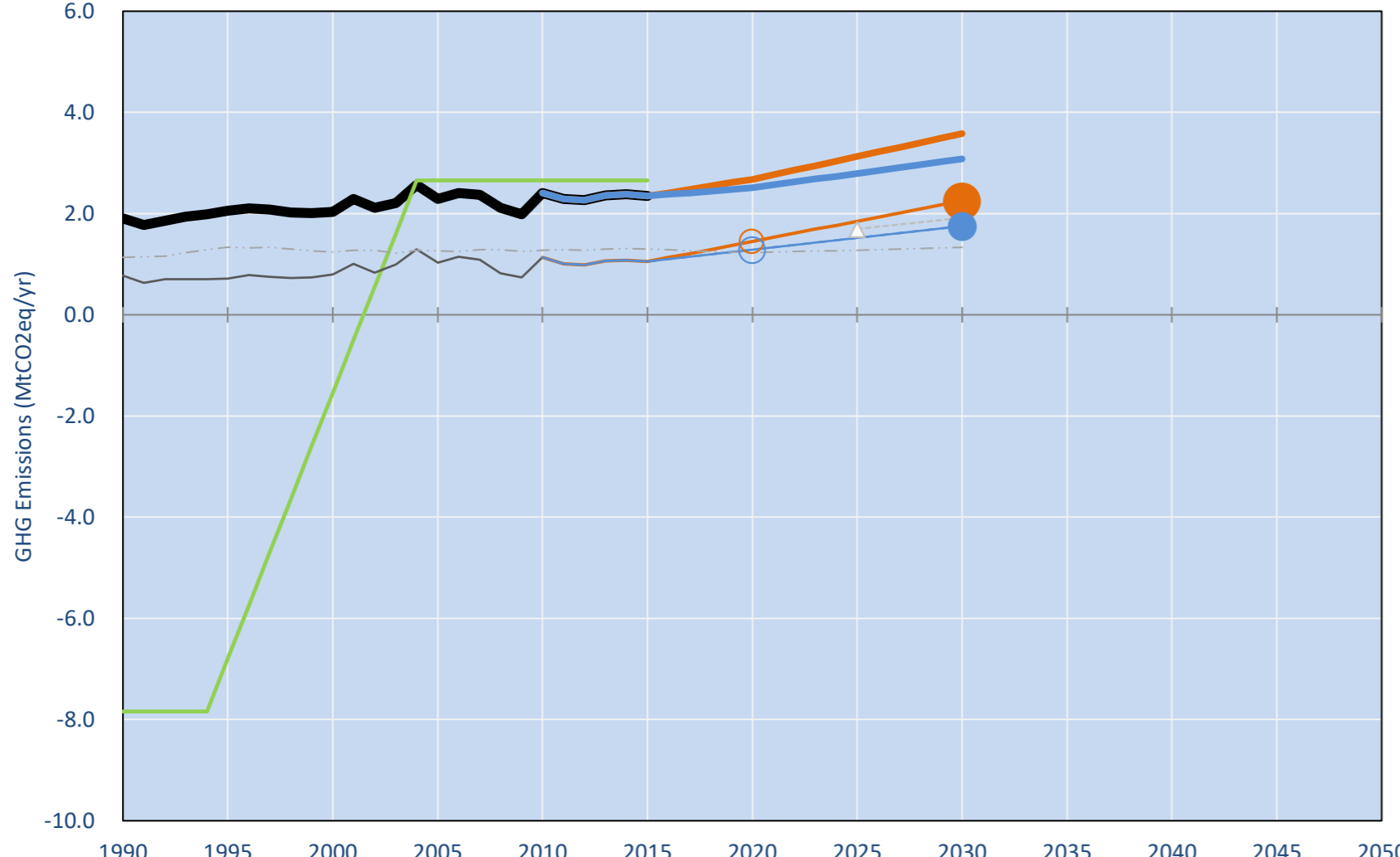
3.2t #121

3.5t #116

NDC: 10% unconditional and a total of 30% conditional reduction below BAU (not quantified) by 2030. . .)

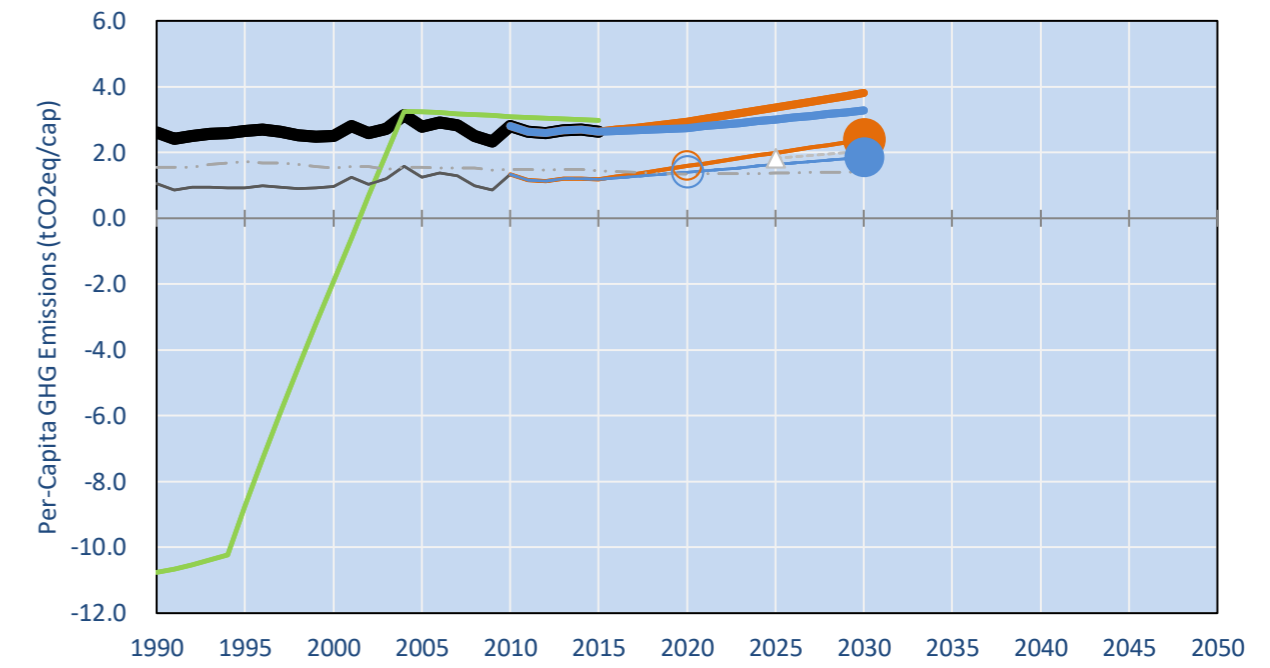
INDC Submitted: 5/11/2015

**GHG Emissions**

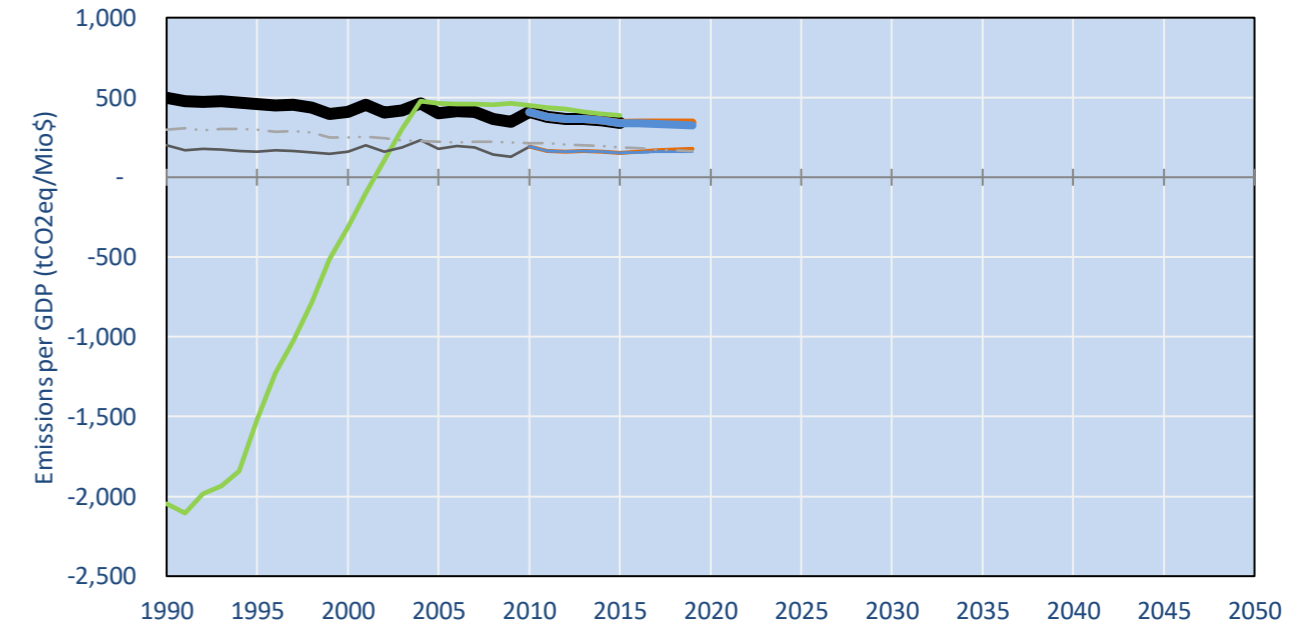


- Reference Total GHG excl. LULUCF
- Historical Covered Emissions, incl. LULUCF, if covered.
- LOW INDC Covered Emissions, incl. LULUCF if covered
- LOW INDC Covered + Non-Covered Emissions, excl. LULUCF
- HIGH INDC Covered Emissions, incl. LULUCF
- HIGH INDC Covered + Non-Covered Emissions, excl. LULUCF
- HIGH Cancun Pledges
- Reference LULUCF Emissions
- LOW INDC Levels
- LOW INDC Covered Emissions, excl. LULUCF
- HIGH INDC Levels
- HIGH INDC Covered Emissions, excl. LULUCF
- LOW Cancun Pledges
- Regional/Gas-specific BAU
- Not-covered GHG excl. LULUCF (Region Projection)

**Per-Capita Emissions**



**GHG Emissions per GDP**



**2015 Total GHG Emissions excl. LULUCF**

By Gas:

CO2	49.4%
CH4	36.1%
N2O	14.6%
F-gases	0.0%

By Sector:

Cat. 1 Energy	45.7%
Cat. 2, 3, 6 & 7	13.1%
Cat 4. Agriculture	41.3%
F-gases	0.0%

**GHG Emissions**

	1990	2000	2005	2010	2015	2020		2025		2030	
						low	high	low	high	low	high
(MtCO2eq/yr in GWP AR4)											
Assumed LULUCF Accounting Credits (-)/Debits (+)											
NDC covered LULUCF Emissions											
NDC covered Emissions excl. LULUCF	1	1	1	1	1	1	1	2	2	2	2
Total GHG excl. LULUCF	2	2	2	2	2	3	3	3	3	4	3
Total GHG incl. LULUCF	6	0	5	5	5	5	5	6	5	6	6

**Relative GHG Emissions**

	1990	2000	2005	2010	2015	2020		2025		2030	
						low	high	low	high	low	high
Total excl. LULUCF											
Relative 1990	100%	107%	120%	127%	123%	141%	132%	164%	147%	188%	162%
Relative 2000	94%	100%	113%	118%	115%	132%	123%	154%	137%	176%	151%
Relative 2005	83%	89%	100%	105%	102%	117%	110%	136%	122%	156%	134%
Relative 2010	79%	84%	95%	100%	97%	111%	104%	130%	116%	148%	128%
Relative 2015	81%	87%	98%	103%	100%	114%	107%	133%	119%	153%	131%

**Per-Capita Emissions**

	1990	2000	2005	2010	2015	2020		2025		2030	
						low	high	low	high	low	high
Total excl. LULUCF											
Population (Mio)	1	1	1	1	1	1	1	1	1	1	1
Per-Capita Emissions (tCO2eq/cap)	2.6	2.5	2.8	2.8	2.6	2.9	2.7	3.4	3.0	3.8	3.3
Relative 1990	100%	96%	107%	107%	100%	112%	105%	128%	115%	146%	125%
Relative 2000	104%	100%	111%	112%	105%	117%	109%	134%	120%	152%	131%
Relative 2005	94%	90%	100%	101%	94%	105%	98%	120%	108%	137%	117%
Relative 2010	93%	89%	99%	100%	94%	104%	98%	120%	107%	136%	117%
Relative 2015	100%	96%	106%	107%	100%	111%	105%	128%	114%	145%	125%

**Data Sources:**

Cat1\_CO2 PRIMAPHIST17  
 Cat2367\_CO2 PRIMAPHIST17  
 Cat4\_CO2 PRIMAPHIST17  
 Cat5\_CO2 PRIMAPHIST17  
 Cat1\_CH4 PRIMAPHIST17  
 Cat2367\_CH4 PRIMAPHIST17  
 Cat4\_CH4 PRIMAPHIST17  
 Cat5\_CH4 PRIMAPHIST17  
 Cat1\_N2O PRIMAPHIST17  
 Cat2367\_N2O PRIMAPHIST17  
 Cat4\_N2O PRIMAPHIST17  
 Cat5\_N2O PRIMAPHIST17  
 Cat0\_HFCs PRIMAPHIST17  
 Cat0\_PFCs PRIMAPHIST17  
 Cat0\_SF6 PRIMAPHIST17  
 Population UN 2015 Population Projections MEDIUM  
 GDP IMF WEO 2015, PPP adjusted GDP, constant 2009 prices...  
 PRIMAPHIST16 description: www.pik-potsdam.de/primap-live/primap-hist/  
 Gratefully acknowledged in particular: PRIMAP, CAIT, CDIAC, EDGAR, IPCC, IEA, UNEP Gap Team, AMPERE Team and comments on earlier versions, in particular by Giacomo Grassi. Errors and misjudgements are our own. Malte Meinshausen & Ryan Alexander; The "Fiji COP23" Edition was enabled through support via the BMUB project UM14 41 4060  
 This Factsheet is available at www.climatecollege.unimelb.edu.au/indc-factsheets. Check out as well: www.climateactiontracker.org, www.mitigation-contributions.org, cait.wri.org, infographics.pbl.nl/indc, live.primap.org, www.unep.org/climatechange/pledgepipeline, and our twitter feed @ClimateCollege  
 climatecollege.unimelb.edu.au  
 AUSTRALIAN-GERMAN CLIMATE & ENERGY COLLEGE

**Various 'fair' contributions for a global 'least-cost' 2°C path (total incl. LULUCF):**

**More info on www.mitigation-contributions.org**

2025 rel. 2010:		2030 rel. 2010:	
LEADER	#N/A	LEADER	#N/A
CDC	#N/A	CDC	#N/A
ECPC50	#N/A	ECPC50	#N/A
ECPC90	#N/A	ECPC90	#N/A
GDR	#N/A	GDR	#N/A
INDC HIGH	8%	INDC HIGH	13%
INDC LOW	14%	INDC LOW	23%

"Fair" contributions for a global 'least-cost' 2°C track:  
 LEADER Leader  
 CDC Common-but-diff. per-cap. convergence  
 ECPC50 Eq. cum. Per-capita since 1950  
 ECPC90 Eq. cum. Per-capita since 1990  
 GDR Greenhouse Development Rights  
 #N/A No available data