

Eritrea

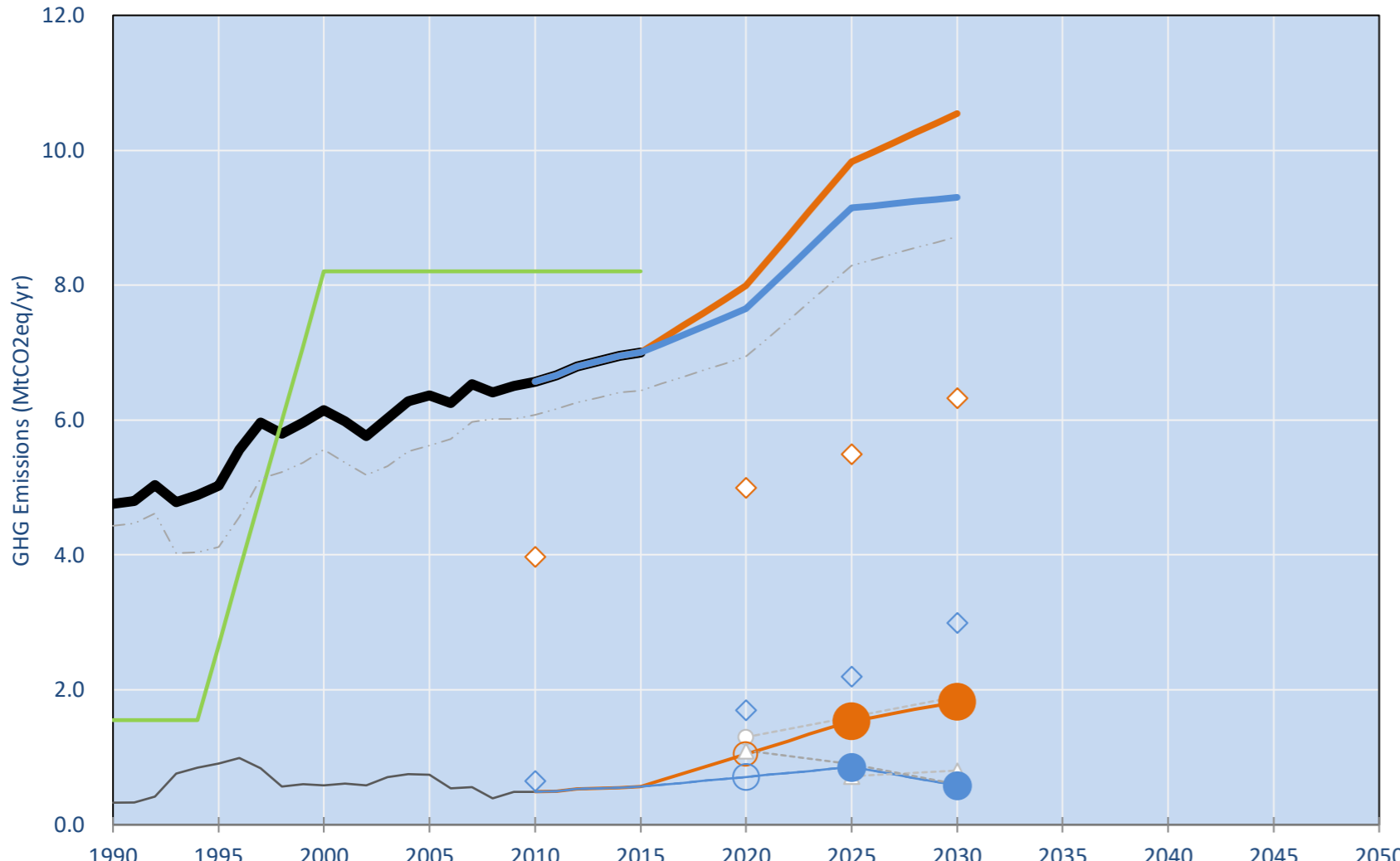
Per-Capita Emissions in 2030 rel. 2015 (excl. LULUCF): **+1%**

INDC 2025	INDC 2030	2015 World Rank	2025 World Rank	2030 World Rank
-30% rel. BAU of 2.2 Mt	-39% rel. BAU of 3 Mt	0.0% #153	0.0% #148	0.0% #147
-61% rel. BAU of 2.2 Mt	-81% rel. BAU of 3 Mt	1.3t #174	1.4t #170	1.4t #175

INDC: 39.2% reduction in fossil fuel CO2 emissions by 2030 (unconditional); 80.6% reduction in fossil fuel CO2 emissions by 2030 (conditional). (2006 IPCC Guidelines)

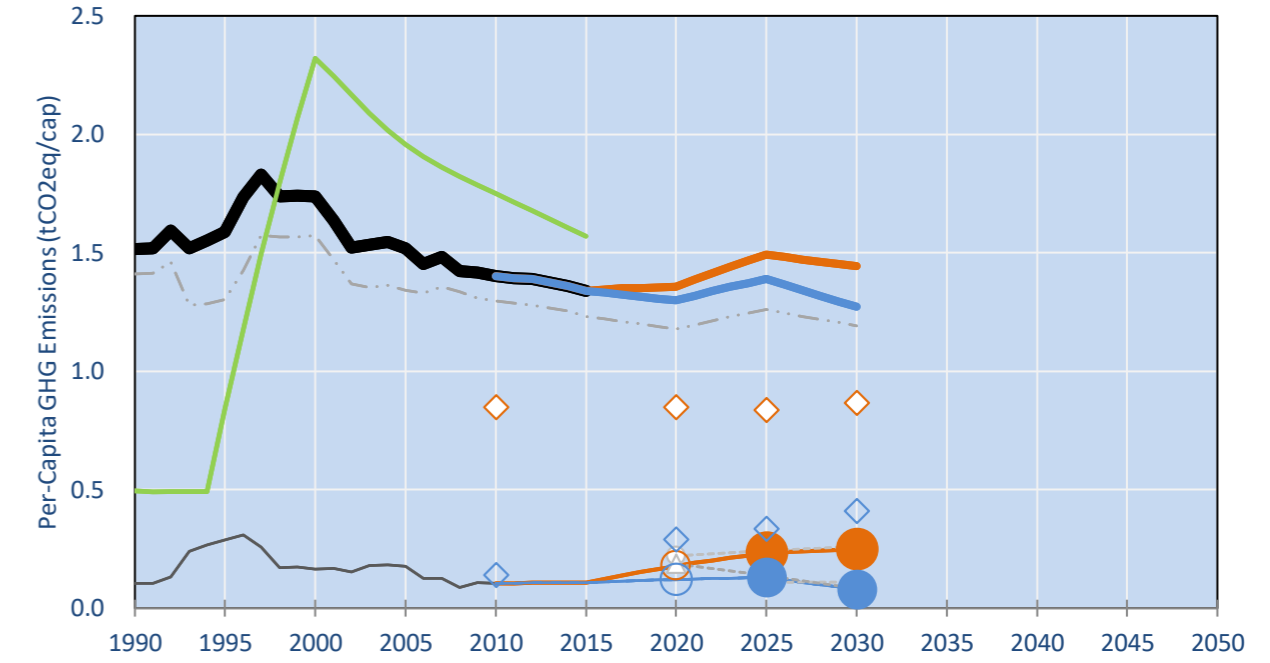
INDC Submitted: 24/09/2015

GHG Emissions

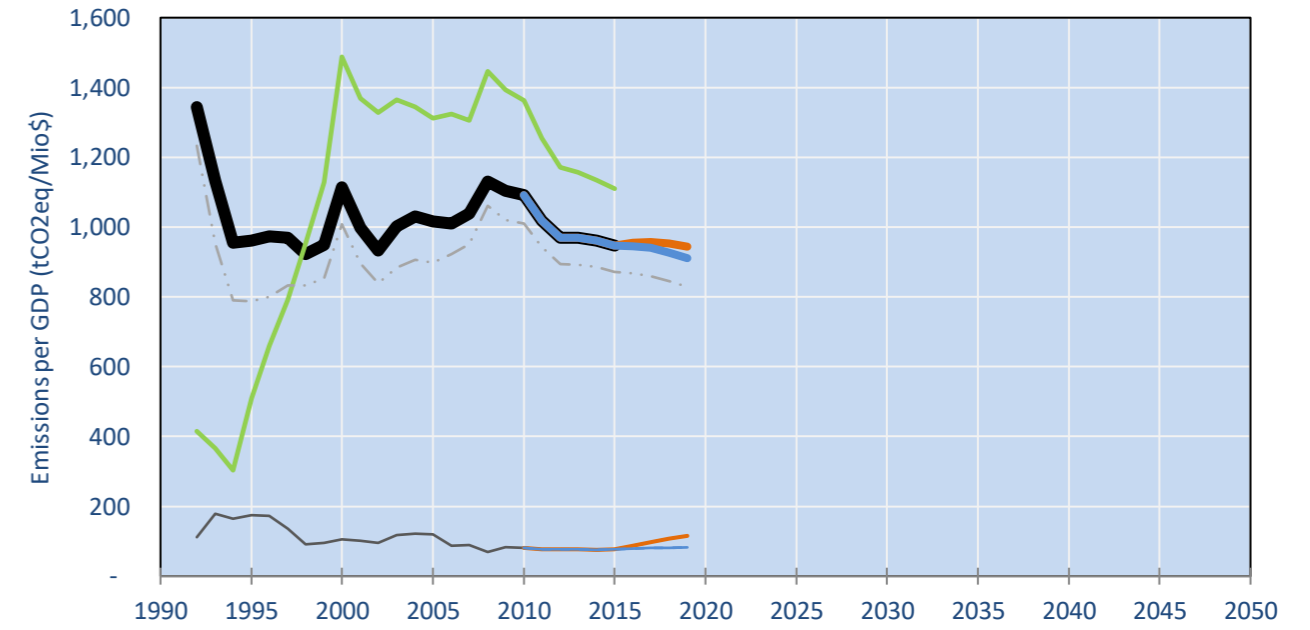


- Reference Total GHG excl. LULUCF
- Historical Covered Emissions, incl. LULUCF, if covered.
- LOW INDC Covered Emissions, incl. LULUCF if covered
- LOW INDC Covered + Non-Covered Emissions, excl. LULUCF
- HIGH INDC Covered Emissions, incl. LULUCF
- HIGH INDC Covered + Non-Covered Emissions, excl. LULUCF
- HIGH Cancun Pledges
- Reference LULUCF Emissions
- LOW INDC Levels
- LOW INDC Covered Emissions, excl. LULUCF
- HIGH INDC Levels
- HIGH INDC Covered Emissions, excl. LULUCF
- LOW Cancun Pledges
- Eritrea INDC fossil fuel CO2 BAU
- Eritrea INDC unconditional fossil fuel CO2 scenario
- Eritrea INDC conditional fossil fuel CO2 scenario
- Not-covered GHG excl. LULUCF (Region Projection)
- Eritrea INDC GHG Total emissions - GWP unclear
- Regional/Gas-specific BAU

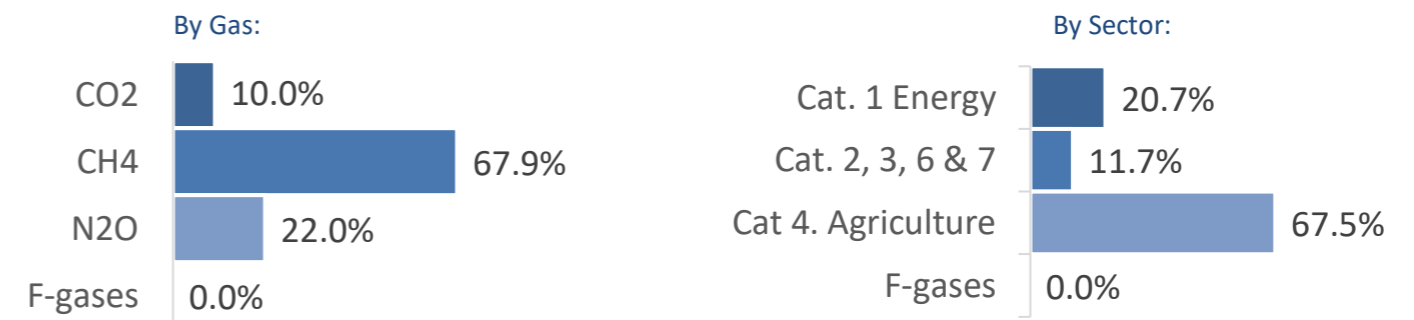
Per-Capita Emissions



GHG Emissions per GDP



2015 Total GHG Emissions excl. LULUCF



GHG Emissions

	1990	2000	2005	2010	2015	2020		2025		2030	
						low	high	low	high	low	high
(MtCO2eq/yr in GWP AR5)											
Assumed LULUCF Accounting Credits (-)/Debits (+)											
INDC covered LULUCF Emissions											
INDC covered Emissions excl. LULUCF	0	1	1	0	1	1	1	2	1	2	1
Total GHG excl. LULUCF	5	6	6	7	7	8	8	10	9	11	9
Total GHG incl. LULUCF	6	14	15	15	15	16	16	18	17	19	18

Relative GHG Emissions

	1990	2000	2005	2010	2015	2020		2025		2030	
						low	high	low	high	low	high
Total excl. LULUCF											
Relative 1990	100%	129%	134%	138%	147%	168%	161%	207%	192%	222%	195%
Relative 2000	77%	100%	104%	107%	114%	130%	124%	160%	149%	172%	151%
Relative 2005	75%	97%	100%	103%	110%	125%	120%	154%	144%	166%	146%
Relative 2010	72%	94%	97%	100%	107%	122%	116%	150%	139%	160%	142%
Relative 2015	68%	88%	91%	94%	100%	114%	109%	140%	131%	151%	133%

Per-Capita Emissions

	1990	2000	2005	2010	2015	2020		2025		2030	
						low	high	low	high	low	high
Total excl. LULUCF											
Population (Mio)	3	4	4	5	5	6	6	7	7	7	7
Per-Capita Emissions (tCO2eq/cap)	1.5	1.7	1.5	1.4	1.3	1.4	1.3	1.5	1.4	1.4	1.3
Relative 1990	100%	115%	100%	92%	88%	89%	86%	98%	92%	95%	84%
Relative 2000	87%	100%	87%	81%	77%	78%	75%	86%	80%	83%	73%
Relative 2005	100%	114%	100%	92%	88%	89%	85%	98%	91%	95%	84%
Relative 2010	108%	124%	108%	100%	96%	97%	93%	107%	99%	103%	91%
Relative 2015	113%	130%	113%	105%	100%	101%	97%	111%	104%	108%	95%

Data Sources:

- Cat1_CO2 PRIMAPHIST17
- Cat2367_CO2 PRIMAPHIST17
- Cat4_CO2 PRIMAPHIST17
- Cat5_CO2 PRIMAPHIST17
- Cat1_CH4 PRIMAPHIST17
- Cat2367_CH4 PRIMAPHIST17
- Cat4_CH4 PRIMAPHIST17
- Cat5_CH4 PRIMAPHIST17
- Cat1_N2O PRIMAPHIST17
- Cat2367_N2O PRIMAPHIST17
- Cat4_N2O PRIMAPHIST17
- Cat5_N2O PRIMAPHIST17
- Cat0_HFCs PRIMAPHIST17
- Cat0_PFCs PRIMAPHIST17
- Cat0_SF6 PRIMAPHIST17
- Population UN 2015 Population Projections MEDIUM
- GDP IMF WEO 2015, PPP adjusted GDP, constant 2009 prices...
- IPCC WG3 Scenario IMAGE | AMPERE2-550-FullTech-HST
- PRIMAPHIST16 description: www.pik-potsdam.de/primap-live/primap-hist/
- Gratefully acknowledged in particular: PRIMAP, CAIT, CDIAC, EDGAR, IPCC, IEA, UNEP Gap Team, AMPERE Team and comments on earlier versions, in particular by Giacomo Grassi. Errors and misjudgements are our own. Malte Meinshausen & Ryan Alexander; The "Fiji COP23" Edition was enabled through support via the BMUB project UM14 41 4060
- This Factsheet is available at www.climatecollege.unimelb.edu.au/indc-factsheets. Check out as well: www.climateactiontracker.org, www.mitigation-contributions.org, cait.wri.org, infographics.pbl.nl/indc, live.primap.org, www.unep.org/climatechange/pledgepipeline, and our twitter feed @ClimateCollege
- Cat5A1_CO2 UNFCCC CRF + Nat. Comms.
- Cat5A2_CO2 UNFCCC CRF + Nat. Comms.
- Cat5LtoNonFL_CO2 UNFCCC CRF + Nat. Comms.
- Cat5GMCMWMM_C UNFCCC CRF
- Cat5A1ForestFires UNFCCC Cat5 + EDGAR(IPCC Database)
- Cat5A1HWP_CO2 UNFCCC CRF + Nat. Comms.
- Cat5bisA_CO2 UNFCCC CRF + NATCOMM.
- Cat5bisB_CO2 UNFCCC CRF + NATCOMM.
- Cat5bisC_CO2 UNFCCC CRF + NATCOMM.
- Cat5bisD_CO2 UNFCCC CRF + NATCOMM.
- Cat5bisE_CO2 UNFCCC CRF + NATCOMM.
- PRO_WM_Cat5_G UNFCCC Annex I Reports
- Metric GWP AR5



Various 'fair' contributions for a global 'least-cost' 2°C path (total incl. LULUCF):

	2025 rel. 2010:	2030 rel. 2010:		2025 rel. 2010:	2030 rel. 2010:
LEADER	#N/A	#N/A	LEADER	#N/A	#N/A
CDC	#N/A	#N/A	CDC	#N/A	#N/A
ECPC50	#N/A	#N/A	ECPC50	#N/A	#N/A
ECPC90	#N/A	#N/A	ECPC90	#N/A	#N/A
GDR	#N/A	#N/A	GDR	#N/A	#N/A
INDC HIGH	17%	18%	INDC HIGH	17%	18%
INDC LOW	22%	27%	INDC LOW	22%	27%

More info on www.mitigation-contributions.org

- "Fair" contributions for a global 'least-cost' 2°C track:
- LEADER Leader
 - CDC Common-but-diff. per-cap. convergence
 - ECPC50 Eq. cum. Per-capita since 1950
 - ECPC90 Eq. cum. Per-capita since 1990
 - GDR Greenhouse Development Rights
 - #N/A No available data