

Paris Agreement ratified on: 27/03/2017

# El Salvador

Per-Capita Emissions in 2030 rel. 2015 (excl. LULUCF): **+40%**

NDC 2025

NDC 2030

2015 World Rank

2025 World Rank

2030 World Rank

Share of World Emissions excl. LULUCF (Rank):

0.0% #135

0.0% #133

0.0% #132

Per-Capita Emissions (tCO2eq/cap)

1.9t #154

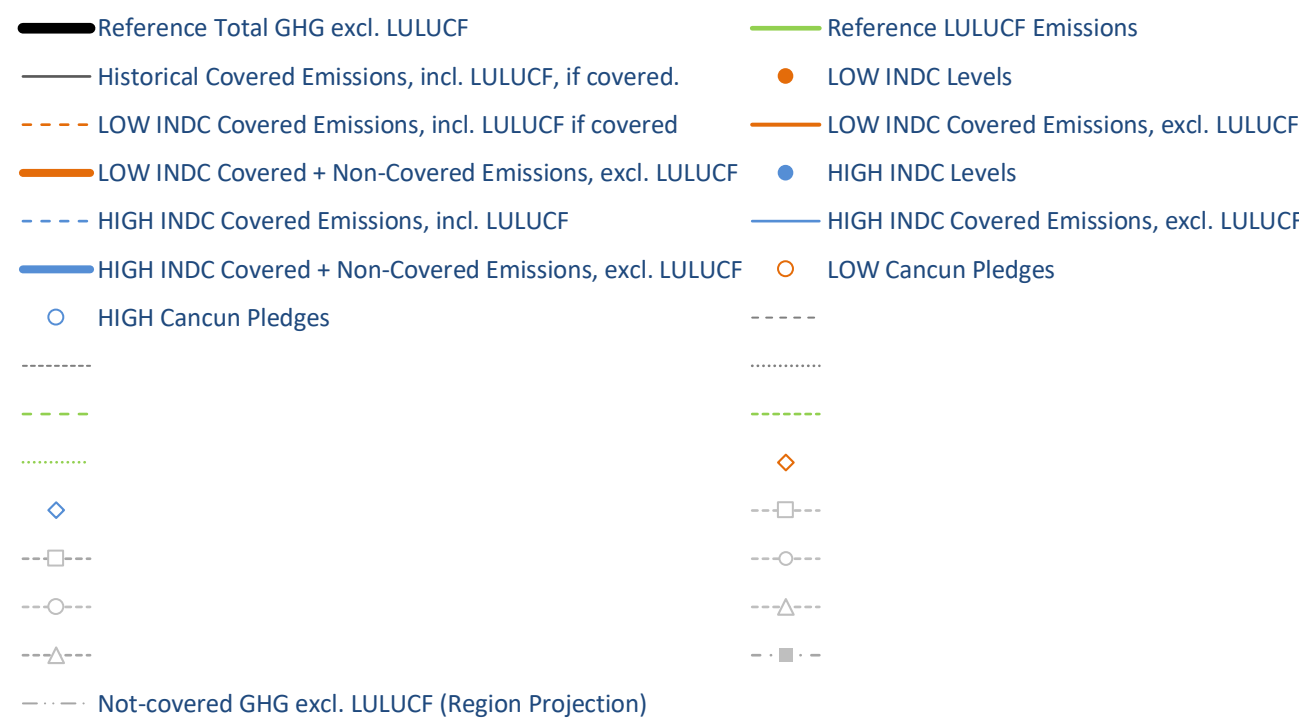
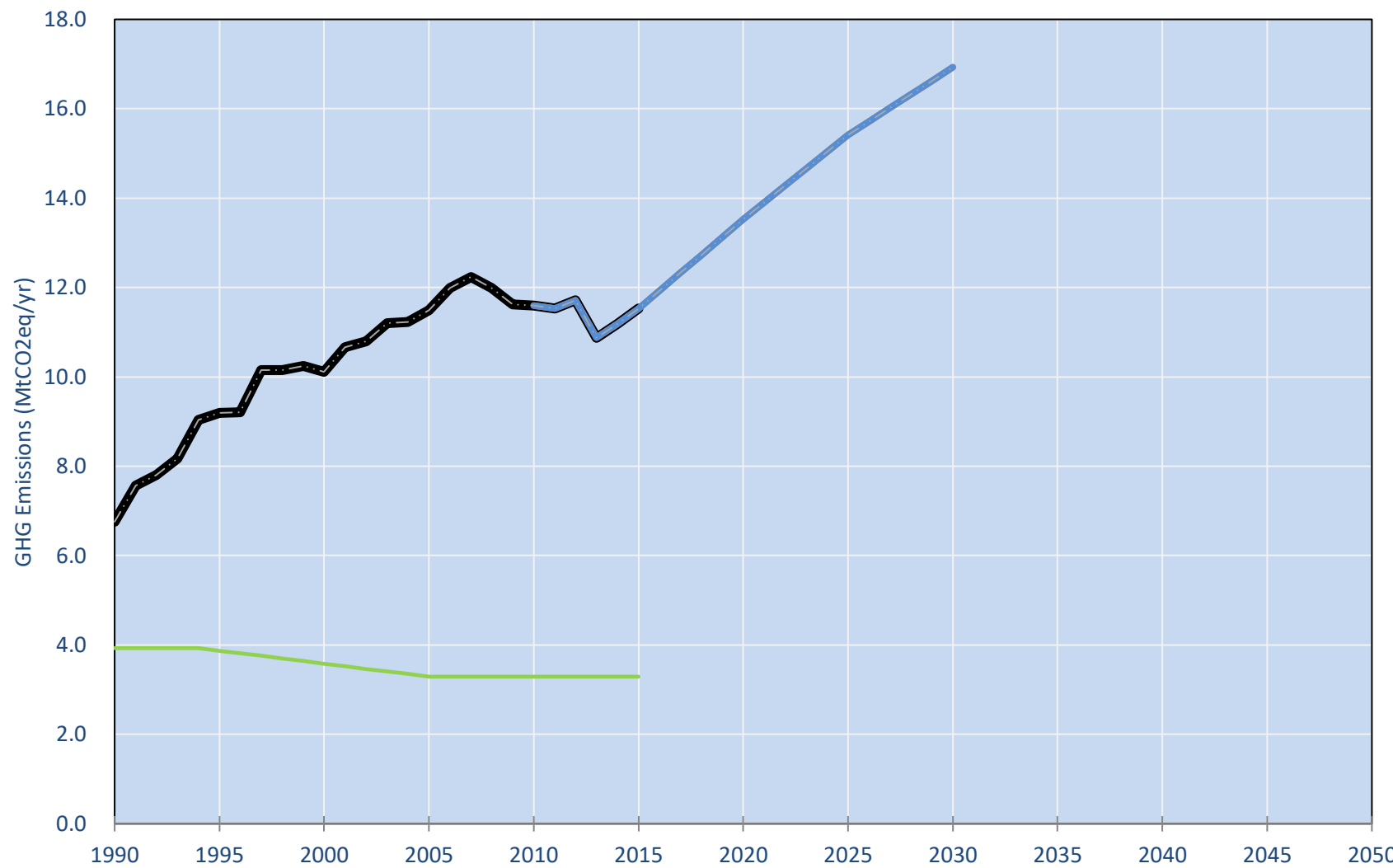
2.4t #136

2.6t #130

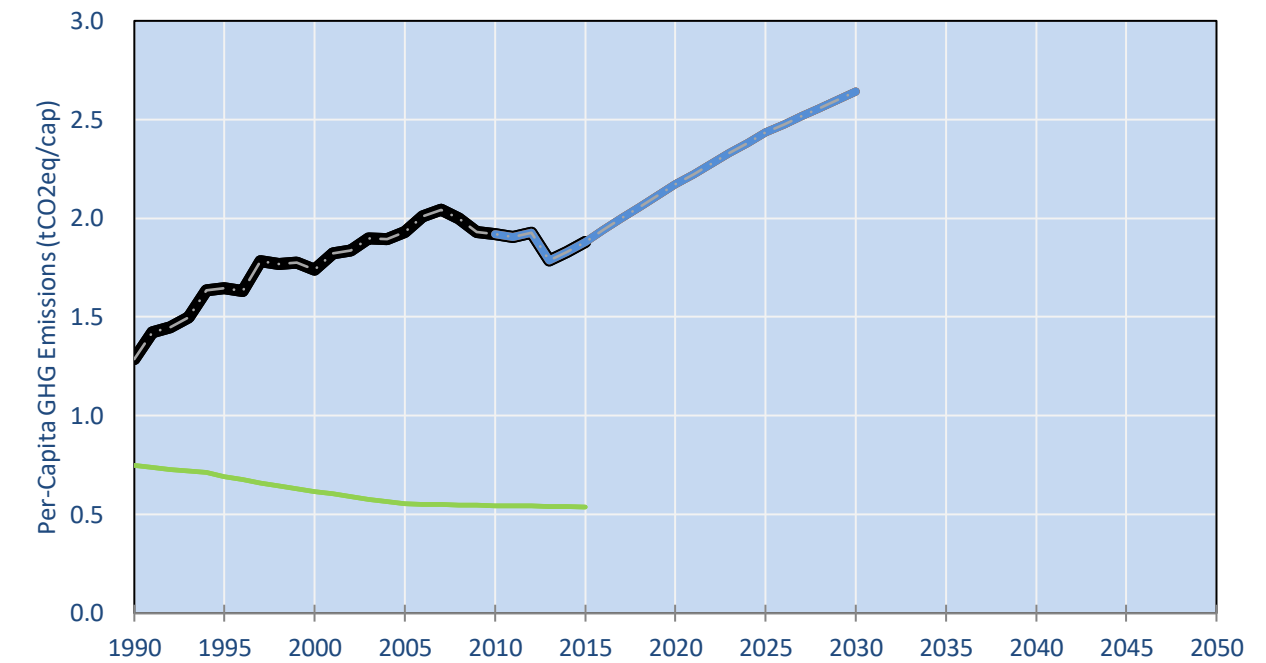
NDC: A set of policies and measures for GHG reductions by 2025 and 2030.. (GWP unclear)

INDC Submitted: 17/11/2015

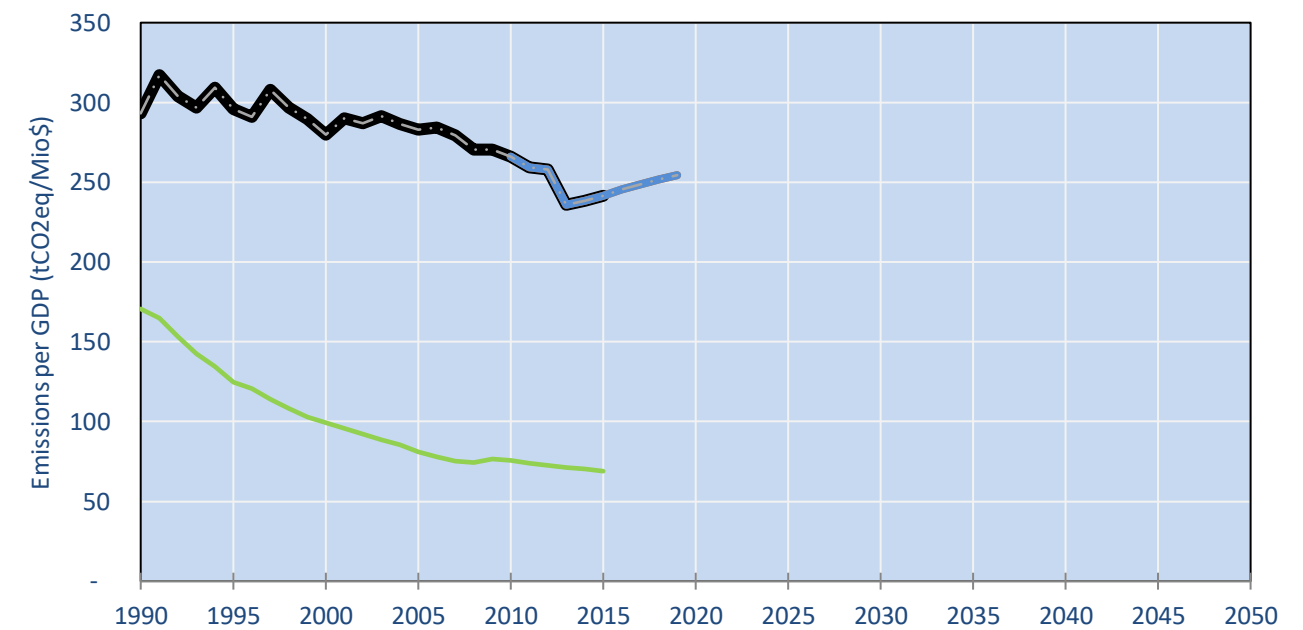
## GHG Emissions



## Per-Capita Emissions

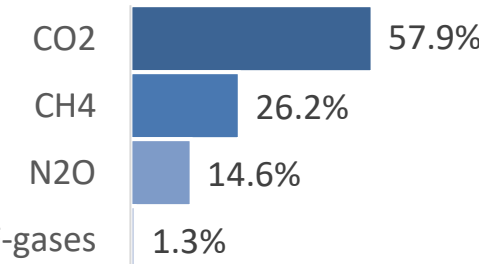


## GHG Emissions per GDP

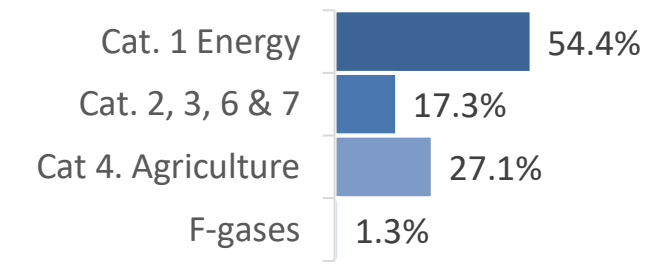


## 2015 Total GHG Emissions excl. LULUCF

By Gas:



By Sector:



## GHG Emissions

	1990	2000	2005	2010	2015	2020	2025	2030
(MtCO2eq/yr in GWP SAR)						low high	low high	low high
Assumed LULUCF Accounting Credits (-)/Debits (+)								
NDC covered LULUCF Emissions	-	-	-	-	-	-	-	-
NDC covered Emissions excl. LULUCF	-	-	-	-	-	-	-	-
Total GHG excl. LULUCF	7	10	11	12	12	14	15	17
Total GHG incl. LULUCF	11	14	15	15	15	17	19	20

## Relative GHG Emissions

	1990	2000	2005	2010	2015	2020	2025	2030
Total excl. LULUCF						low high	low high	low high
Relative 1990	100%	150%	170%	171%	171%	200%	228%	250%
Relative 2000	67%	100%	114%	115%	114%	134%	152%	167%
Relative 2005	59%	88%	100%	101%	100%	118%	134%	147%
Relative 2010	58%	87%	99%	100%	99%	117%	133%	146%
Relative 2015	59%	88%	100%	101%	100%	117%	134%	147%

## Per-Capita Emissions

	1990	2000	2005	2010	2015	2020	2025	2030
Total excl. LULUCF						low high	low high	low high
Population (Mio)	5	6	6	6	6	6	6	6
Per-Capita Emissions (tCO2eq/cap)	1.3	1.7	1.9	1.9	1.9	2.2	2.4	2.6
Relative 1990	100%	135%	150%	149%	146%	169%	189%	205%
Relative 2000	74%	100%	111%	110%	108%	125%	140%	152%
Relative 2005	67%	90%	100%	99%	97%	112%	126%	137%
Relative 2010	67%	91%	101%	100%	98%	113%	127%	138%
Relative 2015	68%	93%	103%	102%	100%	115%	129%	140%

## Data Sources:

Cat1_CO2	PRIMAPHIST17	Cat5A1_CO2	UNFCCC CRF + Nat. Comms.
Cat2367_CO2	PRIMAPHIST17	Cat5A2_CO2	UNFCCC CRF + Nat. Comms.
Cat4_CO2	PRIMAPHIST17	Cat5LtoNonFL_CO2	UNFCCC CRF + Nat. Comms.
Cat5_CO2	PRIMAPHIST17	Cat5GMCMWMM_C	UNFCCC CRF
Cat1_CH4	PRIMAPHIST17	Cat5A1ForestFires	UNFCCC Cat5 + EDGAR(IPCC Database)
Cat2367_CH4	PRIMAPHIST17	Cat5A1HWP_CO2	UNFCCC CRF + Nat. Comms.
Cat4_CH4	PRIMAPHIST17	Cat5bisA_CO2	UNFCCC CRF + NATCOMM.
Cat5_CH4	PRIMAPHIST17	Cat5bisB_CO2	UNFCCC CRF + NATCOMM.
Cat1_N2O	PRIMAPHIST17	Cat5bisC_CO2	UNFCCC CRF + NATCOMM.
Cat2367_N2O	PRIMAPHIST17	Cat5bisD_CO2	UNFCCC CRF + NATCOMM.
Cat4_N2O	PRIMAPHIST17	Cat5bisE_CO2	UNFCCC CRF + NATCOMM.
Cat5_N2O	PRIMAPHIST17	PRO_WM_Cat5_G	UNFCCC Annex I Reports
Cat0_HFCs	PRIMAPHIST17	Metric	GWP SAR
Cat0_PFCs	PRIMAPHIST17		
Cat0_SF6	PRIMAPHIST17		
Population	UN 2015 Population Projections MEDIUM		
GDP	IMF WEO 2015, PPP adjusted GDP, constant 2009 prices...		
	IPCC WG3 Scenario IMAGE   AMPERE2-550-FullTech-HST		
	PRIMAPHIST16 description: www.pik-potsdam.de/primap-live/primap-hist/		
	Gratefully acknowledged in particular: PRIMAP, CAIT, CDIAC, EDGAR, IPCC, IEA, UNEP GAP Team, AMPERE Team and comments on earlier versions, in particular by Giacomo Grassi. Errors and misjudgements are our own. Malte Meinshausen & Ryan Alexander; The "Fiji COP23" Edition was enabled through support via the BMUB project UM14 41 4060		

climatecollege.unimelb.edu.au



## Various 'fair' contributions for a global 'least-cost' 2°C path (total incl. LULUCF):

	2025 rel. 2010:	2030 rel. 2010:
LEADER	#N/A	LEADER
CDC	#N/A	CDC
ECPC50	#N/A	ECPC50
ECPC90	#N/A	ECPC90
GDR	#N/A	GDR
INDC HIGH	<b>26%</b>	INDC HIGH
INDC LOW	<b>26%</b>	INDC LOW

## More info on www.mitigation-contributions.org

"Fair" contributions for a global 'least-cost' 2°C track:

LEADER	Leader
CDC	Common-but-diff. per-cap. convergence
ECPC50	Eq. cum. Per-capita since 1950
ECPC90	Eq. cum. Per-capita since 1990
GDR	Greenhouse Development Rights
#N/A	No available data