

Ecuador

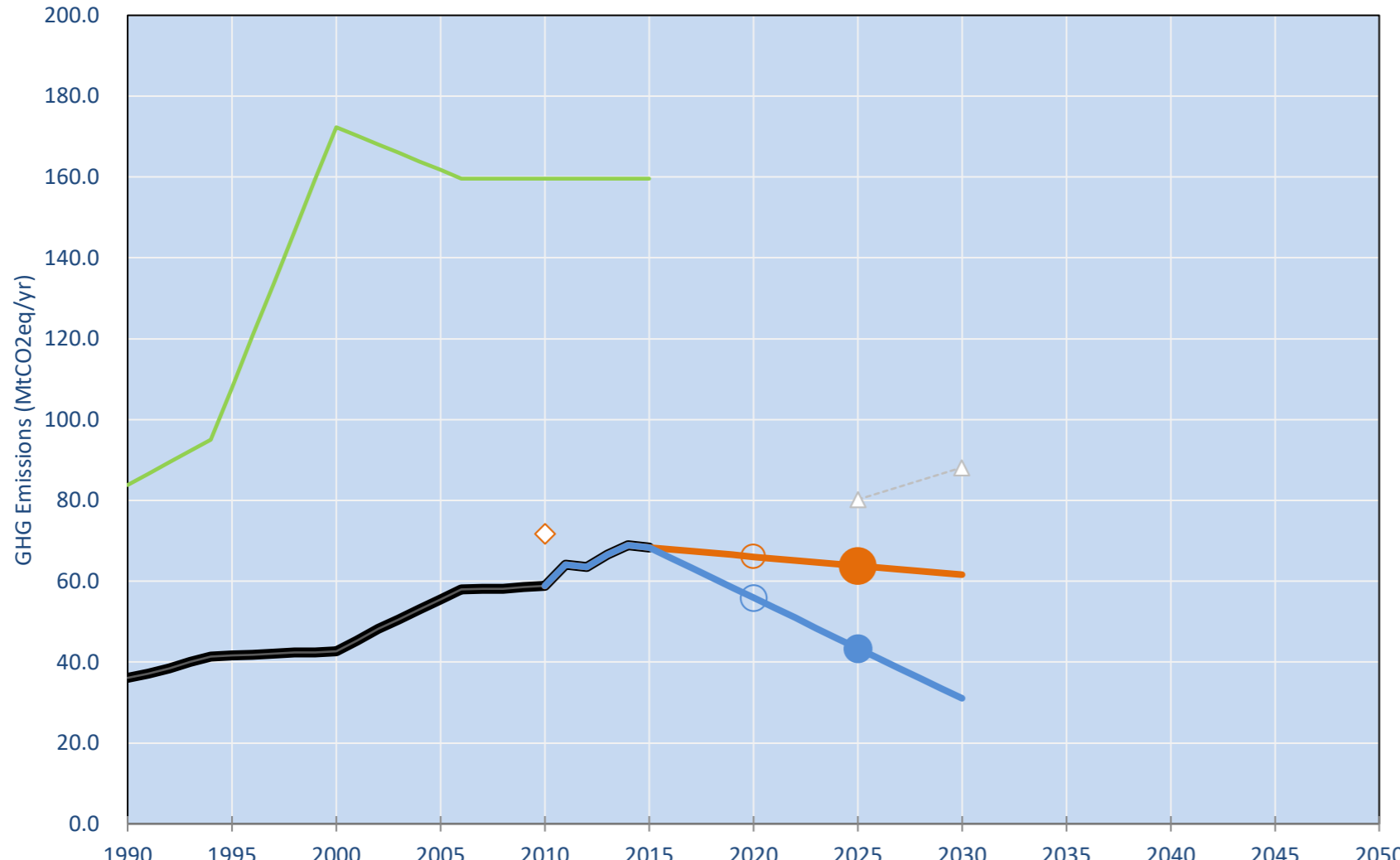
Per-Capita Emissions in 2030 rel. 2015 (excl. LULUCF): **-44%**

INDC 2025	INDC 2030	2015 World Rank	2025 World Rank	2030 World Rank
-20% -25% rel. BAU of 80.2 Mt				
-38% to -46% rel. BAU of 80.2 Mt				
Share of World Emissions excl. LULUCF (Rank):		0.1% #69	0.1% #84	0.1% #98
Per-Capita Emissions (tCO2eq/cap)		4.2t #104	2.9t #130	2.4t #142

INDC: Aims to reduce emission in the energy sector by 20.4-25% compared to BAU levels by 2025 Conditional target: 37.5-45.8% compared to BAU levels pending international support. (GWP unclear)

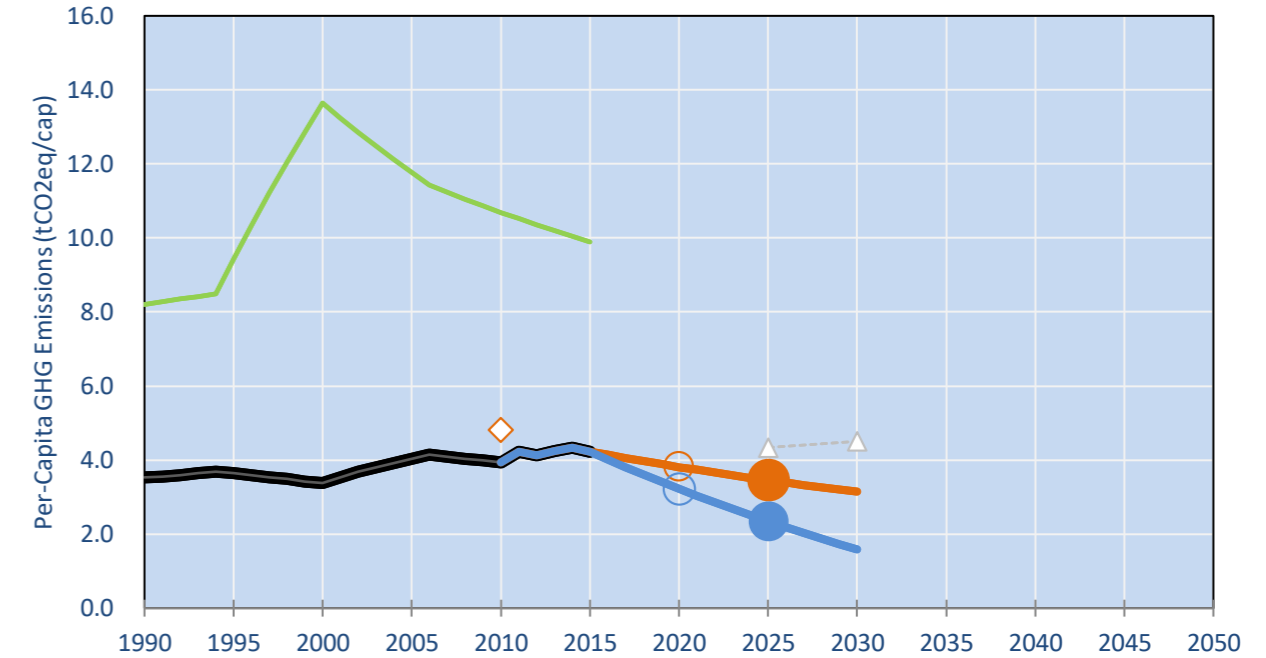
INDC Submitted: 1/10/2015

GHG Emissions

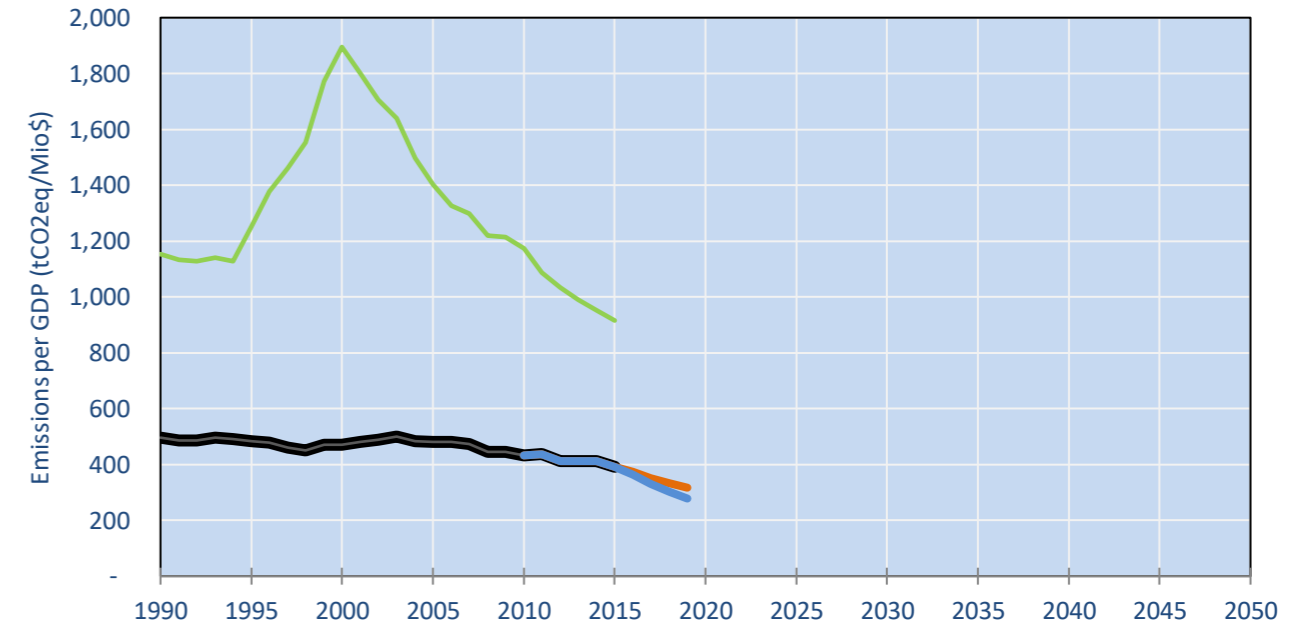


- Reference Total GHG excl. LULUCF
- Historical Covered Emissions, incl. LULUCF, if covered.
- LOW INDC Covered Emissions, incl. LULUCF if covered
- LOW INDC Covered + Non-Covered Emissions, excl. LULUCF
- HIGH INDC Covered Emissions, incl. LULUCF
- HIGH INDC Covered + Non-Covered Emissions, excl. LULUCF
- HIGH Cancun Pledges
- Reference LULUCF Emissions
- LOW INDC Levels
- LOW INDC Covered Emissions, excl. LULUCF
- HIGH INDC Levels
- HIGH INDC Covered Emissions, excl. LULUCF
- LOW Cancun Pledges
- Ecuador INDC 2010
- Regional/Gas-specific BAU
- Not-covered GHG excl. LULUCF (Region Projection)

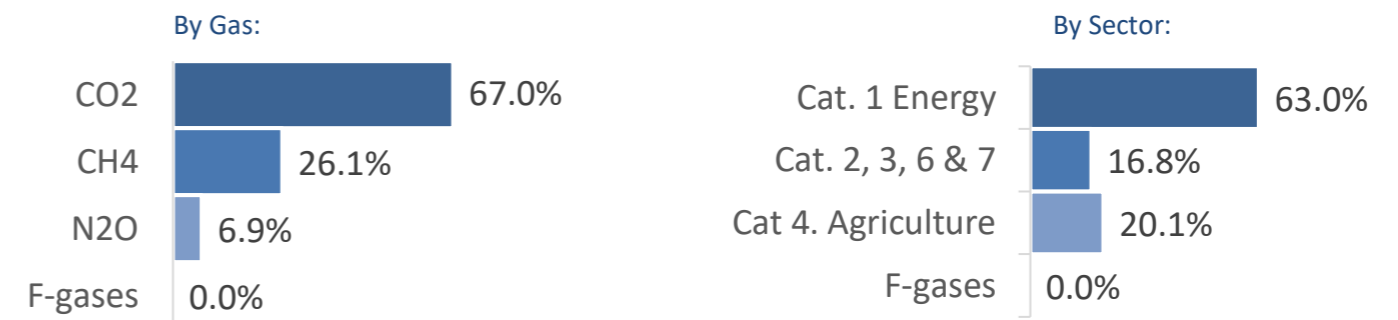
Per-Capita Emissions



GHG Emissions per GDP



2015 Total GHG Emissions excl. LULUCF



GHG Emissions

	1990	2000	2005	2010	2015	2020		2025		2030	
(MtCO2eq/yr in GWP AR5)						low	high	low	high	low	high
Assumed LULUCF Accounting Credits (-)/Debits (+)	-	-	-	-	-	-	-	-	-	-	-
INDC covered LULUCF Emissions	-	-	-	-	-	-	-	-	-	-	-
INDC covered Emissions excl. LULUCF	36	43	55	59	68	66	56	64	43	62	31
Total GHG excl. LULUCF	36	43	55	59	68	66	56	64	43	62	31
Total GHG incl. LULUCF	120	215	217	218	228	226	216	223	203	221	191

Relative GHG Emissions

	1990	2000	2005	2010	2015	2020		2025		2030	
Total excl. LULUCF						low	high	low	high	low	high
Relative 1990	100%	118%	154%	163%	189%	183%	155%	177%	120%	171%	86%
Relative 2000	85%	100%	130%	138%	160%	155%	131%	150%	102%	144%	73%
Relative 2005	65%	77%	100%	106%	123%	119%	101%	115%	78%	111%	56%
Relative 2010	61%	73%	94%	100%	116%	112%	95%	109%	74%	105%	53%
Relative 2015	53%	62%	81%	86%	100%	97%	82%	93%	64%	90%	45%

Per-Capita Emissions

	1990	2000	2005	2010	2015	2020		2025		2030	
Total excl. LULUCF						low	high	low	high	low	high
Population (Mio)	10	13	14	15	16	17	17	18	18	20	20
Per-Capita Emissions (tCO2eq/cap)	3.5	3.4	4.0	3.9	4.2	3.8	3.2	3.5	2.4	3.1	1.6
Relative 1990	100%	96%	114%	111%	120%	108%	91%	98%	67%	89%	45%
Relative 2000	105%	100%	119%	117%	125%	113%	95%	102%	70%	93%	47%
Relative 2005	88%	84%	100%	98%	105%	94%	80%	86%	58%	78%	39%
Relative 2010	90%	86%	103%	100%	107%	97%	82%	88%	60%	80%	40%
Relative 2015	84%	80%	95%	93%	100%	90%	76%	82%	56%	74%	38%

Data Sources:

- Cat1_CO2 PRIMAPHIST17
- Cat2367_CO2 PRIMAPHIST17
- Cat4_CO2 PRIMAPHIST17
- Cat5_CO2 PRIMAPHIST17
- Cat1_CH4 PRIMAPHIST17
- Cat2367_CH4 PRIMAPHIST17
- Cat4_CH4 PRIMAPHIST17
- Cat5_CH4 IPCC HISTORY
- Cat1_N2O PRIMAPHIST17
- Cat2367_N2O PRIMAPHIST17
- Cat4_N2O COUNTRY-SPECIFIC USER DATA
- Cat5_N2O PRIMAPHIST17
- Cat0_HFCs PRIMAPHIST17
- Cat0_PFCs PRIMAPHIST17
- Cat0_SF6 PRIMAPHIST17
- Population UN 2015 Population Projections MEDIUM
- GDP IMF WEO 2015, PPP adjusted GDP, constant 2009 prices...
- IPCC WG3 Scenario IMAGE | AMPERE2-550-FullTech-HST
- PRIMAPHIST16 description: www.pik-potsdam.de/primap-live/primap-hist/
- Gratefully acknowledged in particular: PRIMAP, CAIT, CDIAC, EDGAR, IPCC, IEA, UNEP GAP Team, AMPERE Team and comments on earlier versions, in particular by Giacomo Grassi. Errors and misjudgements are our own. Malte Meinshausen & Ryan Alexander; The "Fiji COP23" Edition was enabled through support via the BMUB project UM14 41 4060
- This Factsheet is available at www.climatecollege.unimelb.edu.au/indc-factsheets. Check out as well: www.climateactiontracker.org, www.mitigation-contributions.org, cait.wri.org, infographics.pbl.nl/indc, live.primap.org, www.unep.org/climatechange/pledgepipeline, and our twitter feed @ClimateCollege
- Cat5A1_CO2 UNFCCC CRF + Nat. Comms.
- Cat5A2_CO2 UNFCCC CRF + Nat. Comms.
- Cat5LtoNonFL_CO UNFCCC CRF + Nat. Comms.
- Cat5GMCMWMM_C UNFCCC CRF
- Cat5A1ForestFires UNFCCC Cat5 + EDGAR(IPCC Database)
- Cat5A1HWP_CO2 UNFCCC CRF + Nat. Comms.
- Cat5bisA_CO2 UNFCCC CRF + NATCOMM.
- Cat5bisB_CO2 UNFCCC CRF + NATCOMM.
- Cat5bisC_CO2 UNFCCC CRF + NATCOMM.
- Cat5bisD_CO2 UNFCCC CRF + NATCOMM.
- Cat5bisE_CO2 UNFCCC CRF + NATCOMM.
- PRO_WM_Cat5_G UNFCCC Annex I Reports
- Metric GWP AR5



Various 'fair' contributions for a global 'least-cost' 2°C path (total incl. LULUCF):

2025 rel. 2010:	2030 rel. 2010:
LEADER	#N/A
CDC	#N/A
ECPC50	#N/A
ECPC90	#N/A
GDR	#N/A
INDC HIGH	-7%
INDC LOW	2%

More info on www.mitigation-contributions.org

"Fair" contributions for a global 'least-cost' 2°C track:
LEADER
CDC
ECPC50
ECPC90
GDR
#N/A