

Shown: 2025 & 2030: Min/max of unconditional and conditional targets

Paris Agreement ratified on: 21/09/2016

Shown are averages for low and high or conditional and unconditional INDCs and their inter-extrapolations

Dominican Republic

Per-Capita Emissions in 2030 rel. 2015 (excl. LULUCF): **-2%**

NDC 2025

NDC 2030

2015 World Rank

2025 World Rank

2030 World Rank

Share of World Emissions excl. LULUCF (Rank):

0.1% #102

0.1% #108

0.1% #105

Per-Capita Emissions (tCO2eq/cap)

3.2t #122

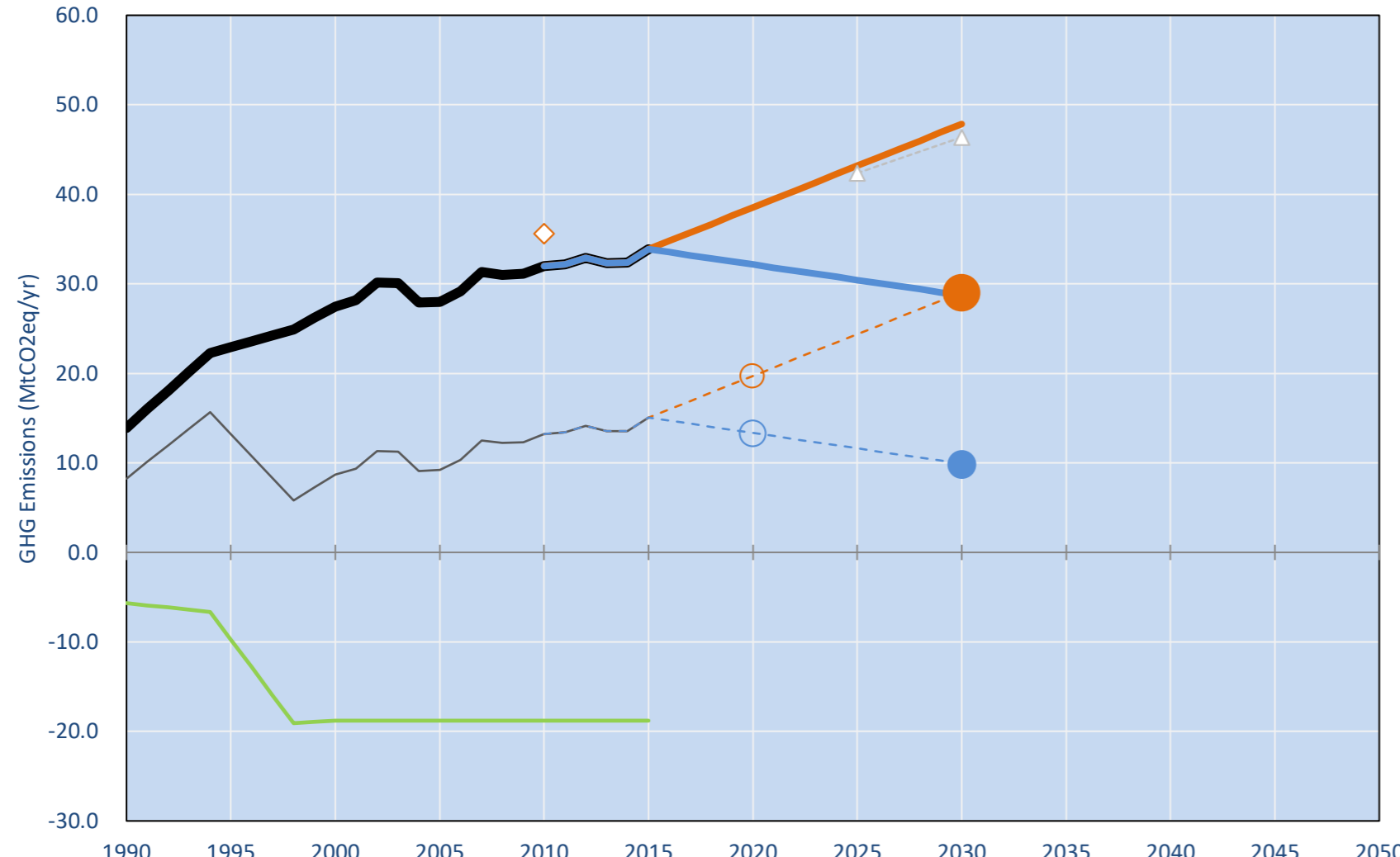
3.2t #122

3.2t #121

NDC: Reduction of 25% of base year emissions (2010) by 2030, conditional pending on support, climate finance mechanisms and corrections to existing market mechanisms. (GWP SAR)

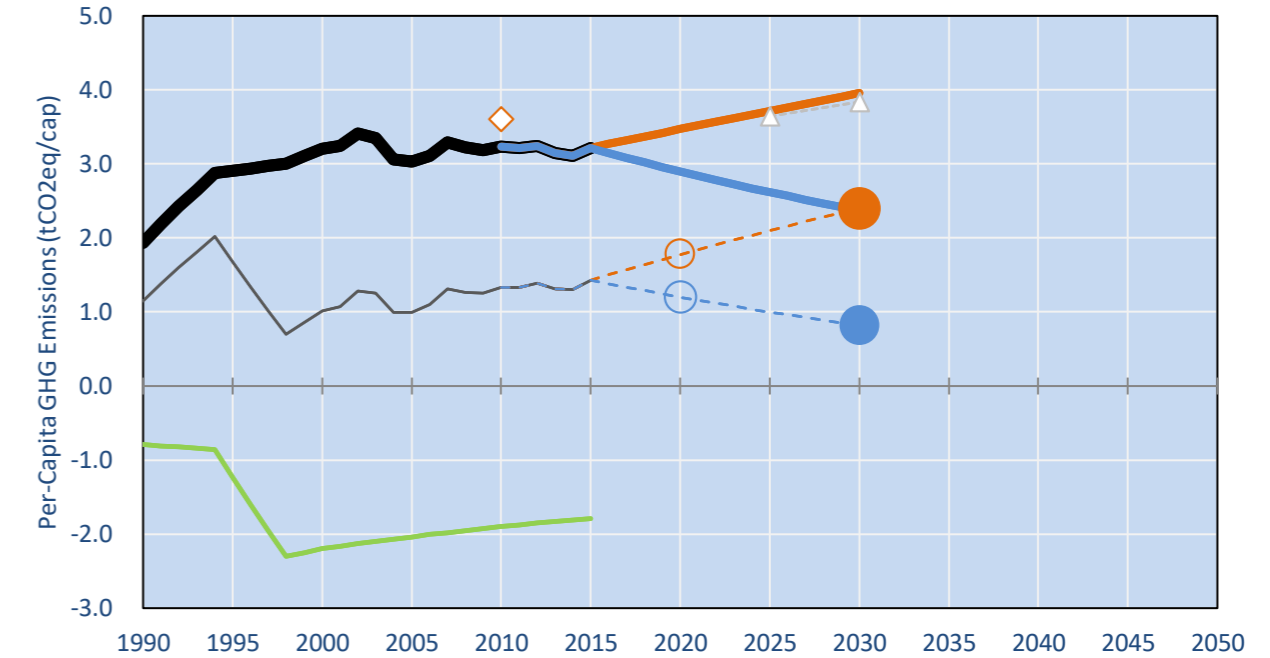
INDC Submitted: 18/08/2015

GHG Emissions

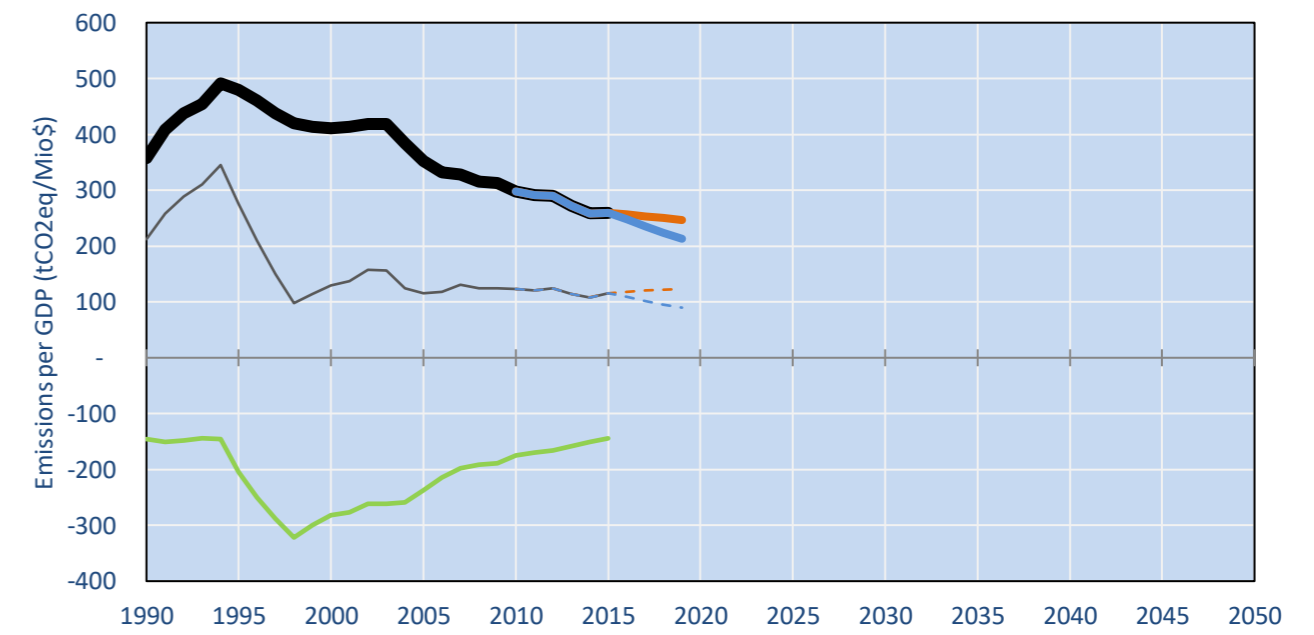


- Reference Total GHG excl. LULUCF
- Historical Covered Emissions, incl. LULUCF, if covered.
- LOW INDC Covered Emissions, incl. LULUCF if covered
- LOW INDC Covered + Non-Covered Emissions, excl. LULUCF
- HIGH INDC Covered Emissions, incl. LULUCF
- HIGH INDC Covered + Non-Covered Emissions, excl. LULUCF
- HIGH Cancun Pledges
- Reference LULUCF Emissions
- LOW INDC Levels
- LOW INDC Covered Emissions, excl. LULUCF
- HIGH INDC Levels
- HIGH INDC Covered Emissions, excl. LULUCF
- LOW Cancun Pledges
- INDC level of 3.6tCO2e per person
- Regional/Gas-specific BAU
- Not-covered GHG excl. LULUCF (Region Projection)

Per-Capita Emissions



GHG Emissions per GDP



2015 Total GHG Emissions excl. LULUCF

By Gas:

CO2 58.8%
CH4 27.0%
N2O 14.1%
F-gases 0.0%

By Sector:

Cat. 1 Energy 58.5%
Cat. 2, 3, 6 & 7 11.4%
Cat 4. Agriculture 30.1%
F-gases 0.0%

GHG Emissions

	1990	2000	2005	2010	2015	2020		2025		2030		
						low	high	low	high	low	high	
(MtCO2eq/yr in GWP AR5)												
Assumed LULUCF Accounting Credits (-)/Debits (+)												
NDC covered LULUCF Emissions	-	6	-	19	-	19	-	19	-	19	-	19
NDC covered Emissions excl. LULUCF	14	27	28	32	34	39	32	43	30	48	29	
Total GHG excl. LULUCF	14	27	28	32	34	39	32	43	30	48	29	
Total GHG incl. LULUCF	8	9	9	13	15	20	13	24	12	29	10	

Relative GHG Emissions

	1990	2000	2005	2010	2015	2020		2025		2030	
						low	high	low	high	low	high
Total excl. LULUCF											
Relative 1990	100%	198%	201%	230%	244%	277%	231%	311%	219%	344%	207%
Relative 2000	51%	100%	102%	116%	123%	140%	117%	157%	111%	174%	104%
Relative 2005	50%	98%	100%	114%	121%	138%	115%	154%	109%	171%	103%
Relative 2010	43%	86%	87%	100%	106%	120%	100%	135%	95%	149%	90%
Relative 2015	41%	81%	83%	95%	100%	114%	95%	128%	90%	141%	85%

Per-Capita Emissions

	1990	2000	2005	2010	2015	2020		2025		2030	
						low	high	low	high	low	high
Total excl. LULUCF											
Population (Mio)	7	9	9	10	11	11	11	12	12	12	12
Per-Capita Emissions (tCO2eq/cap)	1.9	3.2	3.0	3.2	3.2	3.5	2.9	3.7	2.6	4.0	2.4
Relative 1990	100%	166%	157%	167%	166%	179%	150%	192%	135%	205%	123%
Relative 2000	60%	100%	94%	101%	100%	108%	90%	116%	82%	123%	74%
Relative 2005	64%	106%	100%	107%	106%	114%	96%	123%	86%	131%	78%
Relative 2010	60%	99%	94%	100%	99%	107%	90%	115%	81%	122%	73%
Relative 2015	60%	100%	94%	101%	100%	108%	90%	115%	81%	123%	74%

Data Sources:

Cat1_CO2 PRIMAPHIST17
Cat2367_CO2 PRIMAPHIST17
Cat4_CO2 PRIMAPHIST17
Cat5_CO2 PRIMAPHIST17
Cat1_CH4 PRIMAPHIST17
Cat2367_CH4 PRIMAPHIST17
Cat4_CH4 PRIMAPHIST17
Cat5_CH4 PRIMAPHIST17
Cat1_N2O PRIMAPHIST17
Cat2367_N2O PRIMAPHIST17
Cat4_N2O PRIMAPHIST17
Cat5_N2O PRIMAPHIST17
Cat0_HFCs PRIMAPHIST17
Cat0_PFCs PRIMAPHIST17
Cat0_SF6 PRIMAPHIST17
Population UN 2015 Population Projections MEDIUM
GDP IMF WEO 2015, PPP adjusted GDP, constant 2009 prices...
IPCC WG3 Scenario IMAGE | AMPERE2-550-FullTech-HST
PRIMAPHIST16 description: www.pik-potsdam.de/primap-live/primap-hist/
Gratefully acknowledged in particular: PRIMAP, CAIT, CDIAC, EDGAR, IPCC, IEA, UNEP GAP Team, AMPERE Team and comments on earlier versions, in particular by Giacomo Grassi. Errors and misjudgements are our own. Malte Meinshausen & Ryan Alexander; The "Fiji COP23" Edition was enabled through support via the BMUB project UM14 41 4060
This Factsheet is available at www.climatecollege.unimelb.edu.au/indc-factsheets. Check out as well: www.climateactiontracker.org, www.mitigation-contributions.org, cait.wri.org, infographics.pbl.nl/indc, live.primap.org, www.unep.org/climatechange/pledgepipeline, and our twitter feed @ClimateCollege
climatecollege.unimelb.edu.au
AUSTRALIAN-GERMAN CLIMATE & ENERGY COLLEGE

Various 'fair' contributions for a global 'least-cost' 2°C path (total incl. LULUCF):

More info on www.mitigation-contributions.org

	2025 rel. 2010:		2030 rel. 2010:
LEADER	#N/A	LEADER	#N/A
CDC	#N/A	CDC	#N/A
ECPC50	#N/A	ECPC50	#N/A
ECPC90	#N/A	ECPC90	#N/A
GDR	#N/A	GDR	#N/A
INDC HIGH	-12%	INDC HIGH	-25%
INDC LOW	85%	INDC LOW	120%

"Fair" contributions for a global 'least-cost' 2°C track:

LEADER Leader
CDC Common-but-diff. per-cap. convergence
ECPC50 Eq. cum. Per-capita since 1950
ECPC90 Eq. cum. Per-capita since 1990
GDR Greenhouse Development Rights
#N/A No available data