



Dominica

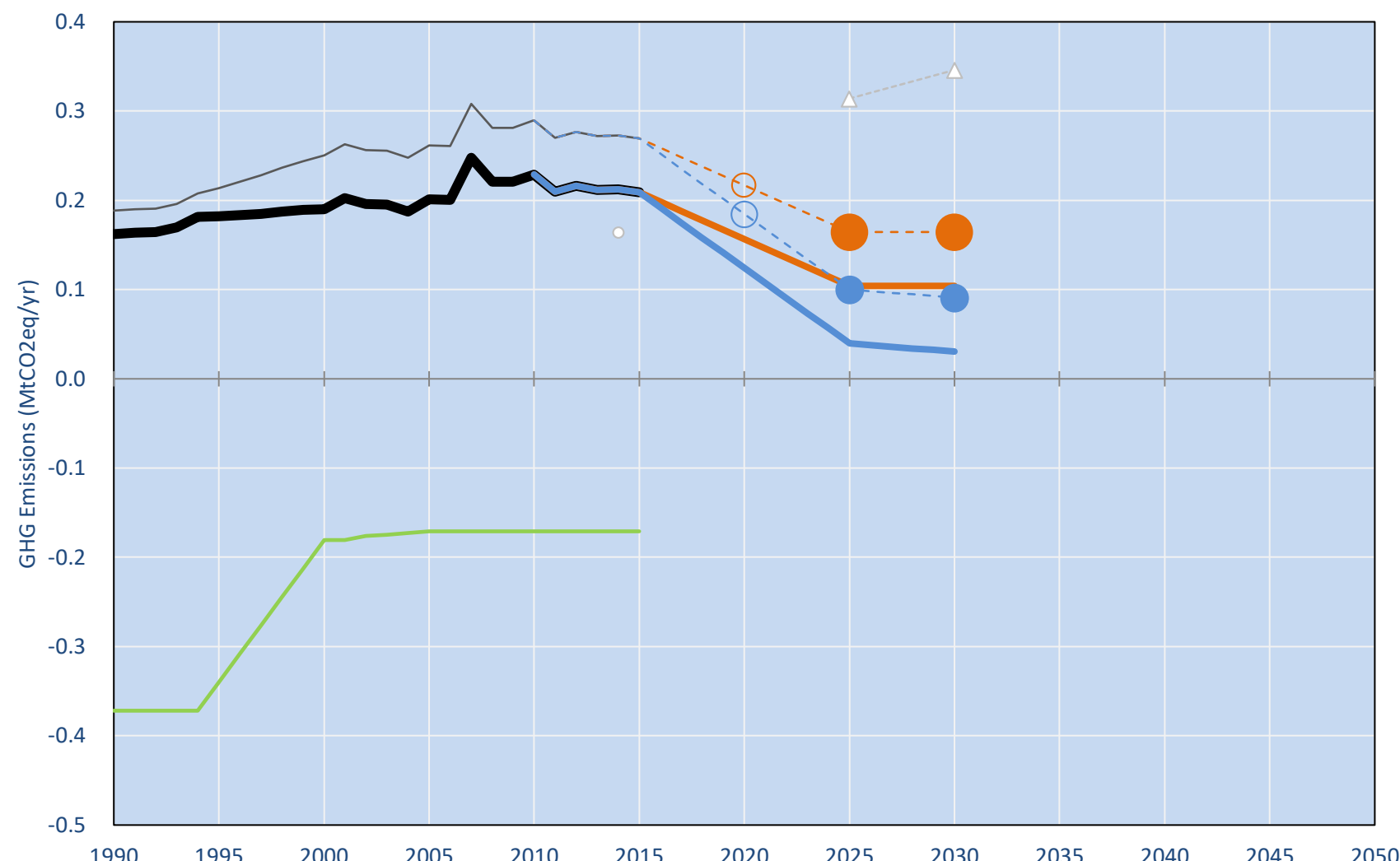
Per-Capita Emissions in 2030 rel. 2015 (excl. LULUCF): **-69%**

NDC 2025	NDC 2030	2015 World Rank	2025 World Rank	2030 World Rank
0% rel.2014	0% rel.2014	0.0% #187	0.0% #195	0.0% #196
-39% rel.2014	-45% rel.2014	2.9t #131	1t #187	0.9t #188

NDC: Commits to progressively reduce total gross greenhouse gas emissions below 2014 levels of 17.9% by 2020, 39.2% by 2025 and 44.7% by 2030. (GWP SAR)

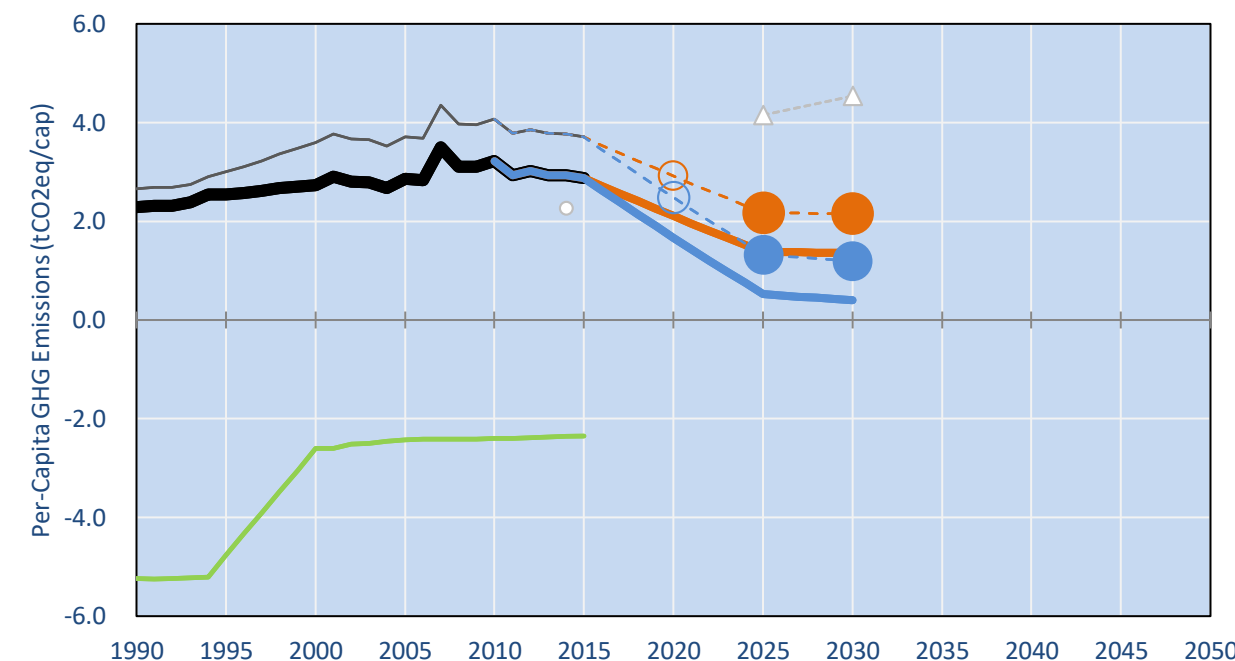
INDC Submitted: 29/09/2015

GHG Emissions

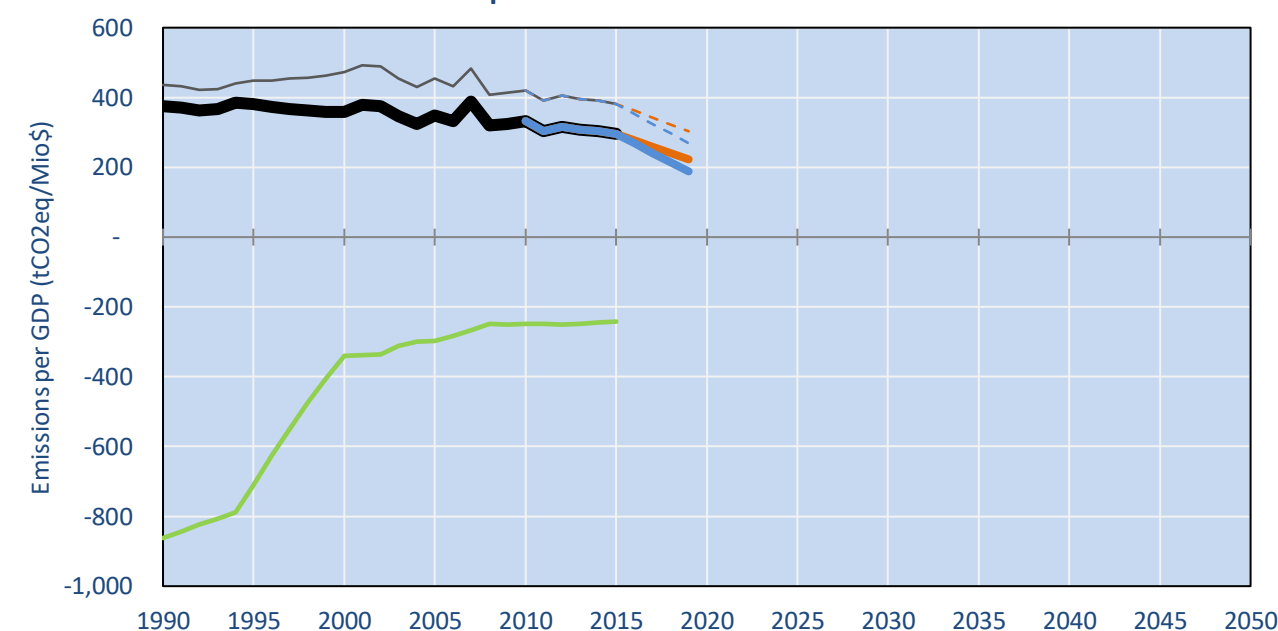


- Reference Total GHG excl. LULUCF
- Historical Covered Emissions, incl. LULUCF, if covered.
- LOW INDC Covered Emissions, incl. LULUCF if covered
- LOW INDC Covered + Non-Covered Emissions, excl. LULUCF
- HIGH INDC Covered Emissions, incl. LULUCF
- HIGH INDC Covered + Non-Covered Emissions, excl. LULUCF
- HIGH Cancun Pledges
- Reference LULUCF Emissions
- LOW INDC Levels
- LOW INDC Covered Emissions, excl. LULUCF
- HIGH INDC Levels
- HIGH INDC Covered Emissions, excl. LULUCF
- LOW Cancun Pledges
- Dominica INDC
- Regional/Gas-specific BAU
- Not-covered GHG excl. LULUCF (Region Projection)

Per-Capita Emissions



GHG Emissions per GDP



2015 Total GHG Emissions excl. LULUCF

By Gas:	By Sector:
CO2: 71.8%	Cat. 1 Energy: 70.1%
CH4: 14.2%	Cat. 2, 3, 6 & 7: 9.8%
N2O: 14.0%	Cat. 4. Agriculture: 20.0%
F-gases: 0.0%	F-gases: 0.0%

GHG Emissions

	1990	2000	2005	2010	2015	2020		2025		2030	
(MtCO2eq/yr in GWP AR5)						low	high	low	high	low	high
Assumed LULUCF Accounting Credits (-)/Debits (+)											
NDC covered LULUCF Emissions	0	0	0	0	0	0	0	0	0	0	0
NDC covered Emissions excl. LULUCF	0	0	0	0	0	0	0	0	0	0	0
Total GHG excl. LULUCF	0	0	0	0	0	0	0	0	0	0	0
Total GHG incl. LULUCF	-	0	0	0	0	-	-	-	-	-	-

Relative GHG Emissions

	1990	2000	2005	2010	2015	2020		2025		2030	
Total excl. LULUCF						low	high	low	high	low	high
Relative 1990	100%	117%	124%	141%	129%	96%	77%	64%	24%	64%	19%
Relative 2000	85%	100%	106%	120%	110%	82%	65%	55%	21%	55%	16%
Relative 2005	81%	94%	100%	114%	104%	78%	62%	52%	20%	52%	15%
Relative 2010	71%	83%	88%	100%	91%	68%	54%	45%	17%	45%	13%
Relative 2015	78%	91%	96%	110%	100%	75%	59%	50%	19%	50%	15%

Per-Capita Emissions

	1990	2000	2005	2010	2015	2020		2025		2030	
Total excl. LULUCF						low	high	low	high	low	high
Population (Mio)	0	0	0	0	0	0	0	0	0	0	0
Per-Capita Emissions (tCO2eq/cap)	2.3	2.7	2.9	3.2	2.9	2.1	1.7	1.4	0.5	1.4	0.4
Relative 1990	100%	119%	125%	141%	126%	92%	73%	60%	23%	60%	18%
Relative 2000	84%	100%	105%	118%	105%	77%	61%	50%	19%	50%	15%
Relative 2005	80%	96%	100%	113%	101%	74%	59%	48%	18%	48%	14%
Relative 2010	71%	85%	89%	100%	89%	65%	52%	43%	16%	42%	12%
Relative 2015	80%	95%	99%	112%	100%	73%	58%	48%	18%	48%	14%

Data Sources:

Cat1_CO2	PRIMAPHIST17	Cat5A1_CO2	UNFCCC CRF + Nat. Comms.
Cat2367_CO2	PRIMAPHIST17	Cat5A2_CO2	UNFCCC CRF + Nat. Comms.
Cat4_CO2	PRIMAPHIST17	Cat5LtoNonFL_CO2	UNFCCC CRF + Nat. Comms.
Cat5_CO2	PRIMAPHIST17	Cat5GMCMWMM_C	UNFCCC CRF
Cat1_CH4	PRIMAPHIST17	Cat5A1ForestFires	UNFCCC Cat5 + EDGAR(IPCC Database)
Cat2367_CH4	PRIMAPHIST17	Cat5A1HWP_CO2	UNFCCC CRF + Nat. Comms.
Cat4_CH4	PRIMAPHIST17	Cat5bisA_CO2	UNFCCC CRF + NATCOMM.
Cat5_CH4	PRIMAPHIST17	Cat5bisB_CO2	UNFCCC CRF + NATCOMM.
Cat1_N2O	PRIMAPHIST17	Cat5bisC_CO2	UNFCCC CRF + NATCOMM.
Cat2367_N2O	PRIMAPHIST17	Cat5bisD_CO2	UNFCCC CRF + NATCOMM.
Cat4_N2O	PRIMAPHIST17	Cat5bisE_CO2	UNFCCC CRF + NATCOMM.
Cat5_N2O	PRIMAPHIST17	PRO_WM_Cat5_G	UNFCCC Annex I Reports
Cat0_HFCs	PRIMAPHIST17	Metric	GWP AR5
Cat0_PFCs	PRIMAPHIST17		
Cat0_SF6	PRIMAPHIST17		
Population	UN 2015 Population Projections MEDIUM		
GDP	IMF WEO 2015, PPP adjusted GDP, constant 2009 prices...		
	IPCC WG3 Scenario IMAGE AMPERE2-550-FullTech-HST		
	PRIMAPHIST16 description: www.pik-potsdam.de/primap-live/primap-hist/		
	Gratefully acknowledged in particular: PRIMAP, CAIT, CDIAC, EDGAR, IPCC, IEA, UNEP Gap Team, AMPERE Team and comments on earlier versions, in particular by Giacomo Grassi. Errors and misjudgements are our own. Malte Meinshausen & Ryan Alexander; The "Fiji COP23" Edition was enabled through support via the BMUB project UM14 41 4060		
	This Factsheet is available at www.climatecollege.unimelb.edu.au/indc-factsheets. Check out as well: www.climateactiontracker.org, www.mitigation-contributions.org, cait.wri.org, infographics.pbl.nl/indc, live.primap.org, www.unep.org/climatechange/pledgepipeline, and our twitter feed @ClimateCollege		



Various 'fair' contributions for a global 'least-cost' 2°C path (total incl. LULUCF):

2025 rel. 2010:		2030 rel. 2010:	
LEADER	#N/A	LEADER	#N/A
CDC	#N/A	CDC	#N/A
ECPC50	#N/A	ECPC50	#N/A
ECPC90	#N/A	ECPC90	#N/A
GDR	#N/A	GDR	#N/A
INDC HIGH	-326%	INDC HIGH	-341%
INDC LOW	-215%	INDC LOW	-215%

More info on www.mitigation-contributions.org

"Fair" contributions for a global 'least-cost' 2°C track:
 LEADER **Leader**
 CDC **Common-but-diff. per-cap. convergence**
 ECPC50 **Eq. cum. Per-capita since 1950**
 ECPC90 **Eq. cum. Per-capita since 1990**
 GDR **Greenhouse Development Rights**
 #N/A **No available data**