

# Democratic Republic of the Congo

Per-Capita Emissions in 2030 rel. 2015 (excl. LULUCF): **+35%**

INDC 2025

INDC 2030

2015 World Rank

2025 World Rank

2030 World Rank

0% rel. BAU of 435 Mt

Share of World Emissions excl. LULUCF (Rank):

0.1% #82

0.1% #92

0.2% #60

-17% rel. BAU of 435 Mt

Per-Capita Emissions (tCO2eq/cap)

0.6t #193

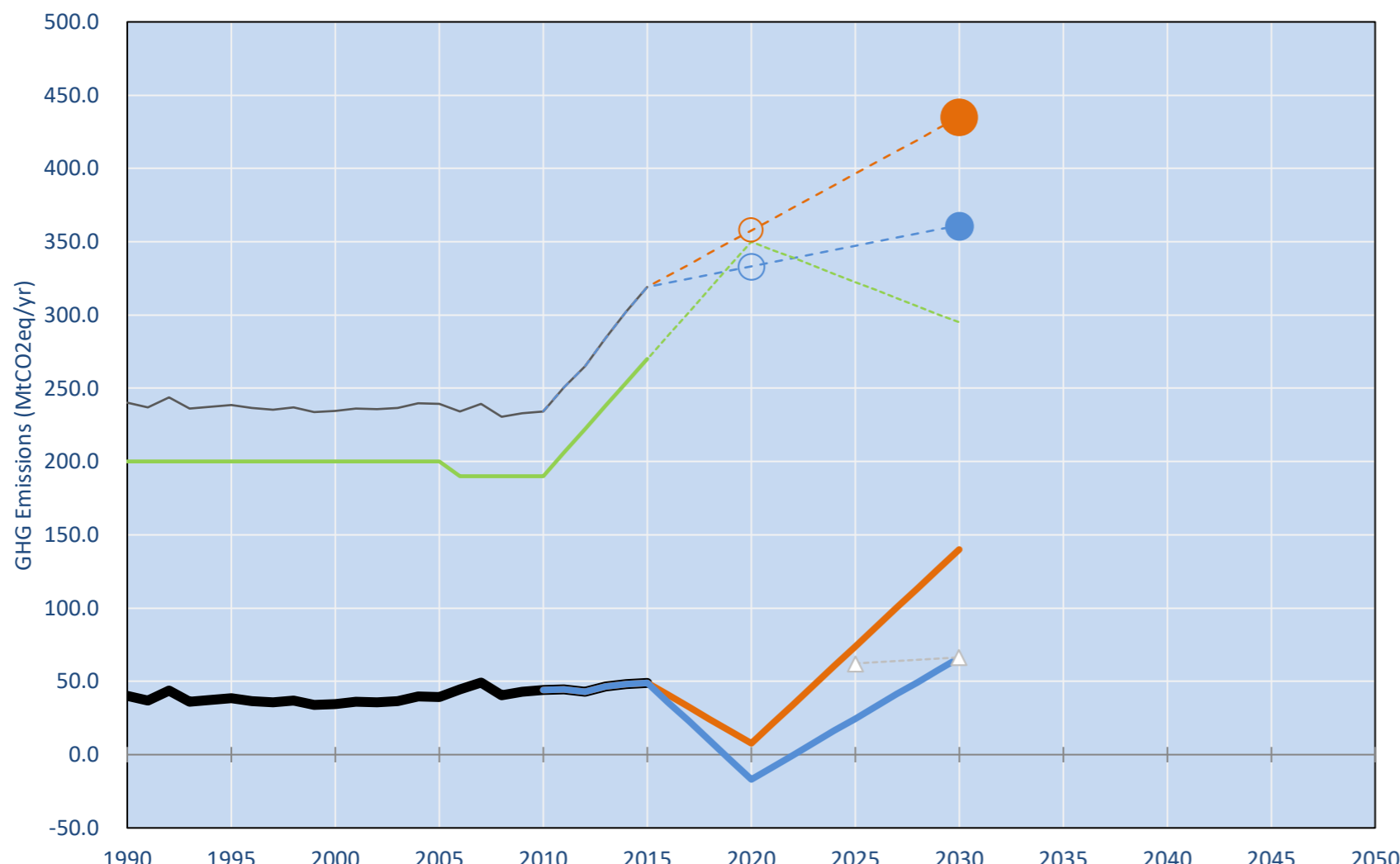
0.5t #195

0.9t #187

INDC: Conditional reduction of GHG emissions by 17% below 2000 by 2030 pending on financial support. (GWP unclear)

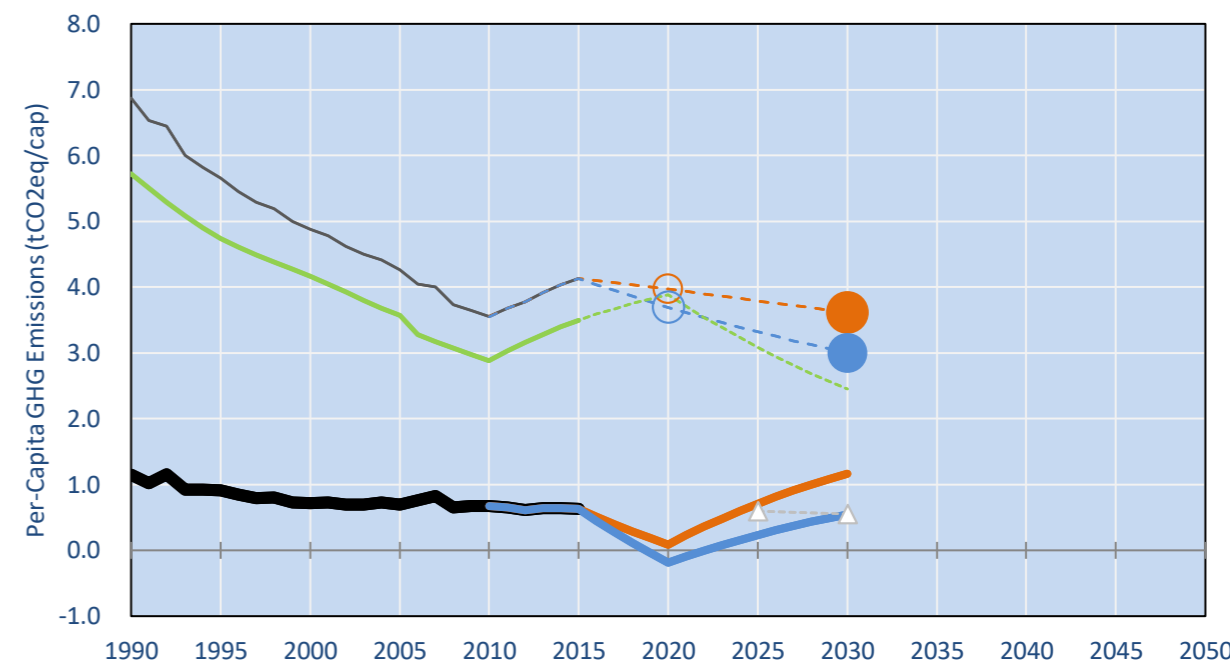
INDC Submitted: 18/08/2015

## GHG Emissions

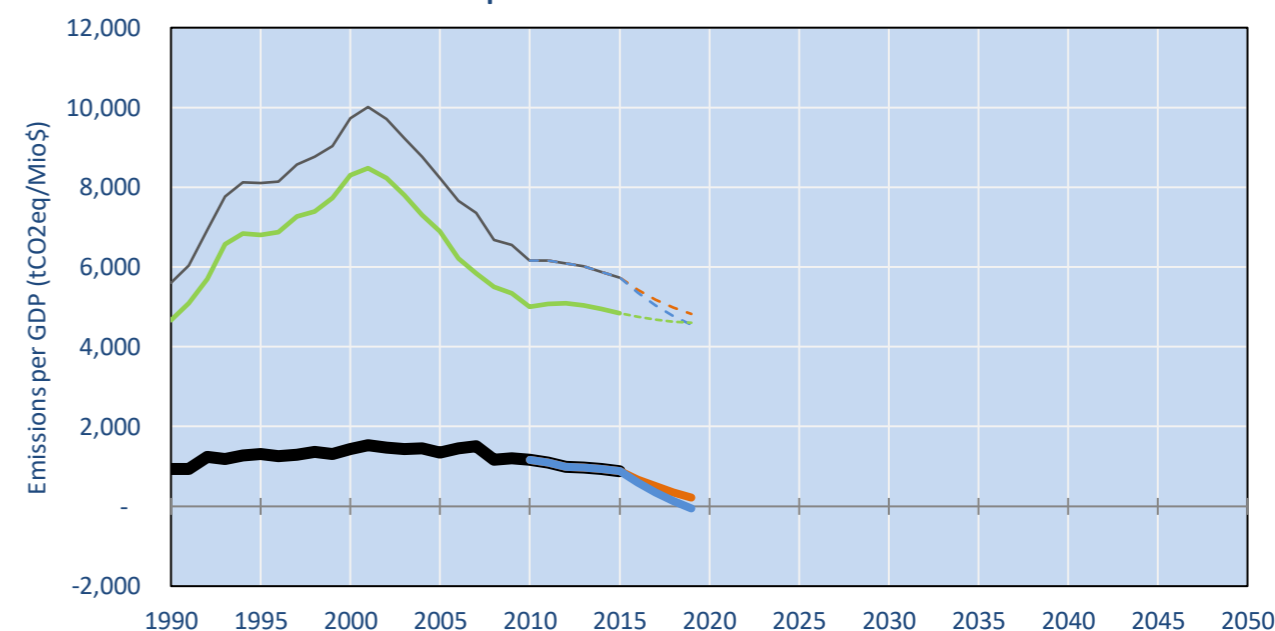


- Reference Total GHG excl. LULUCF
- Historical Covered Emissions, incl. LULUCF, if covered.
- LOW INDC Covered Emissions, incl. LULUCF if covered
- LOW INDC Covered + Non-Covered Emissions, excl. LULUCF
- HIGH INDC Covered Emissions, incl. LULUCF
- HIGH INDC Covered + Non-Covered Emissions, excl. LULUCF
- HIGH Cancun Pledges
- Reference LULUCF Emissions
- LOW INDC Levels
- LOW INDC Covered Emissions, excl. LULUCF
- HIGH INDC Levels
- HIGH INDC Covered Emissions, excl. LULUCF
- LOW Cancun Pledges
- WM LULUCF Projections
- Regional/Gas-specific BAU
- Not-covered GHG excl. LULUCF (Region Projection)

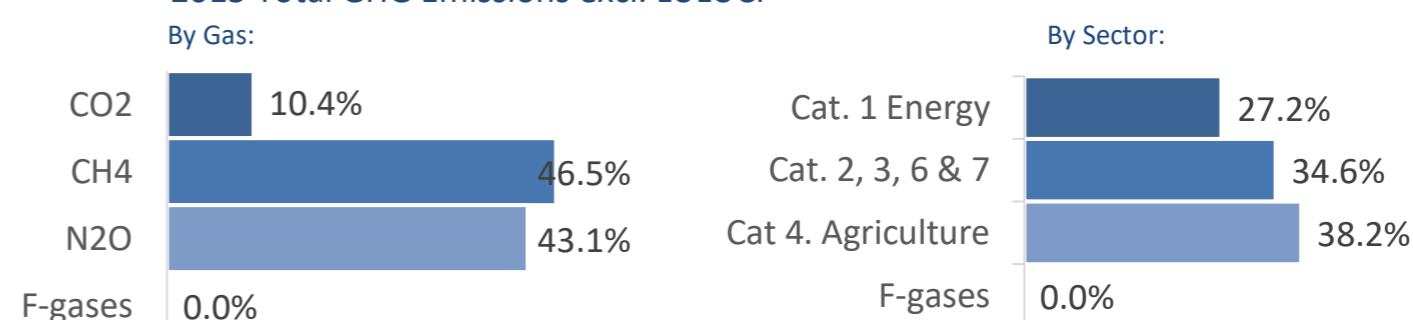
## Per-Capita Emissions



## GHG Emissions per GDP



## 2015 Total GHG Emissions excl. LULUCF



## GHG Emissions

	1990	2000	2005	2010	2015	2020	2025	2030
(MtCO2eq/yr in GWP SAR)						low high	low high	low high
Assumed LULUCF Accounting Credits (-)/Debits (+)								
INDC covered LULUCF Emissions	200	200	200	190	270	350 350	323 323	295 295
INDC covered Emissions excl. LULUCF	40	34	39	44	49	8 - 17	74 25	140 66
Total GHG excl. LULUCF	40	34	39	44	49	8 - 17	74 25	140 66
Total GHG incl. LULUCF	240	234	239	234	319	358 333	396 347	435 361

## Relative GHG Emissions

	1990	2000	2005	2010	2015	2020	2025	2030
Total excl. LULUCF						low high	low high	low high
Relative 1990	100%	86%	97%	110%	122%	19% -42%	184% 61%	348% 164%
Relative 2000	117%	100%	114%	129%	142%	22% -49%	214% 71%	406% 192%
Relative 2005	103%	88%	100%	113%	125%	20% -43%	188% 63%	357% 169%
Relative 2010	91%	78%	88%	100%	111%	17% -38%	167% 55%	316% 149%
Relative 2015	82%	70%	80%	90%	100%	16% -34%	150% 50%	285% 135%

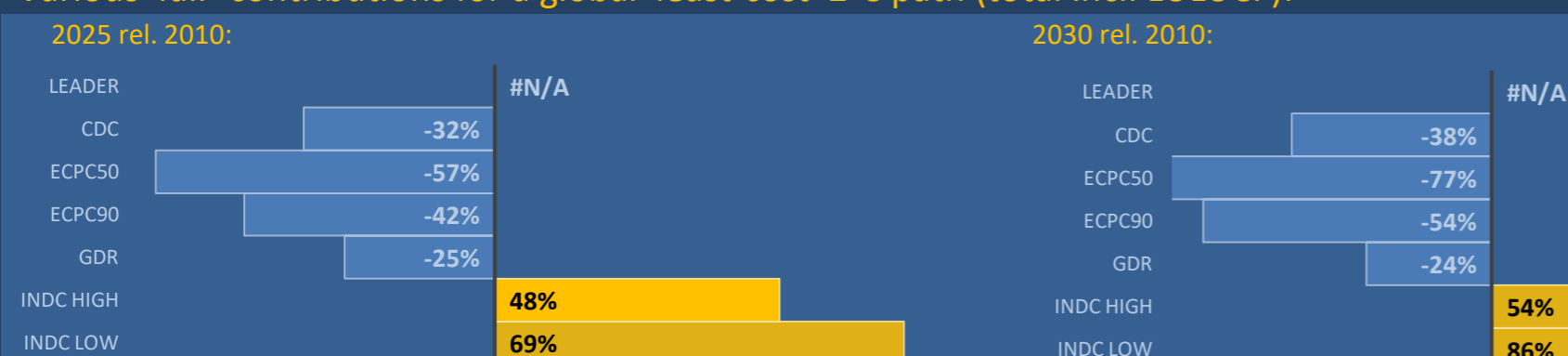
## Per-Capita Emissions

	1990	2000	2005	2010	2015	2020	2025	2030
Total excl. LULUCF						low high	low high	low high
Population (Mio)	35	48	56	66	77	90 90	105 105	120 120
Per-Capita Emissions (tCO2eq/cap)	1.2	0.7	0.7	0.7	0.6	0.1 - 0.2	0.7 0.2	1.2 0.5
Relative 1990	100%	62%	61%	58%	55%	7% -16%	61% 20%	101% 48%
Relative 2000	160%	100%	97%	94%	89%	12% -26%	99% 33%	162% 77%
Relative 2005	165%	103%	100%	96%	91%	12% -27%	101% 34%	167% 79%
Relative 2010	171%	107%	104%	100%	95%	13% -28%	105% 35%	173% 82%
Relative 2015	181%	113%	110%	106%	100%	13% -30%	111% 37%	183% 86%

## Data Sources:

Cat1_CO2	PRIMAPHIST17	Cat5A1_CO2	FAO FRA2015
Cat2367_CO2	PRIMAPHIST17	Cat5A2_CO2	FAO FRA2015
Cat4_CO2	PRIMAPHIST17	Cat5LtoNonFL_CO2	UNFCCC CRF + Nat. Comms.
Cat5_CO2	COUNTRY-SPECIFIC USER DATA	Cat5GCMCMWM_C	UNFCCC CRF
Cat1_CH4	PRIMAPHIST17	Cat5A1ForestFires	UNFCCC Cat5 + EDGAR(IPCC Database)
Cat2367_CH4	PRIMAPHIST17	Cat5A1HWP_CO2	UNFCCC CRF + Nat. Comms.
Cat4_CH4	PRIMAPHIST17	Cat5bisA_CO2	COUNTRY-SPECIFIC USER DATA
Cat5_CH4	PRIMAPHIST17	Cat5bisB_CO2	COUNTRY-SPECIFIC USER DATA
Cat1_N2O	PRIMAPHIST17	Cat5bisC_CO2	COUNTRY-SPECIFIC USER DATA
Cat2367_N2O	PRIMAPHIST17	Cat5bisD_CO2	COUNTRY-SPECIFIC USER DATA
Cat4_N2O	PRIMAPHIST17	Cat5bisE_CO2	COUNTRY-SPECIFIC USER DATA
Cat5_N2O	PRIMAPHIST17	Cat5bisF_CO2	COUNTRY-SPECIFIC USER DATA
Cat0_HFCs	PRIMAPHIST17	Cat5bisG_CO2	COUNTRY-SPECIFIC USER DATA
Cat0_PFCs	PRIMAPHIST17	Metric	GWP SAR
Cat0_SF6	PRIMAPHIST17		
Population	UN 2015 Population Projections MEDIUM		
GDP	IMF WEO 2015, PPP adjusted GDP, constant 2009 prices...		
	IPCC WG3 Scenario IMAGE   AMPERE2-550-FullTech-HST		
	PRIMAPHIST16 description: www.pik-potsdam.de/primap-live/primap-hist/		
	Gratefully acknowledged in particular: PRIMAP, CAIT, CDIAC, EDGAR, IPCC, IEA, UNEP Gap Team, AMPERE Team and comments on earlier versions, in particular by Giacomo Grassi. Errors and misjudgements are our own. Malte Meinshausen & Ryan Alexander; The "Fiji COP23" Edition was enabled through support via the BMUB project UM14 41 4060		
	This Factsheet is available at www.climatecollege.unimelb.edu.au/indc-factsheets. Check out as well: www.climateactiontracker.org, www.mitigation-contributions.org, cait.wri.org, infographics.pbl.nl/indc, live.primap.org, www.unep.org/climatechange/pledgepipeline, and our twitter feed @ClimateCollege		
		climatecollege.unimelb.edu.au	
		AUSTRALIAN-GERMAN CLIMATE & ENERGY COLLEGE	

## Various 'fair' contributions for a global 'least-cost' 2°C path (total incl. LULUCF):



## More info on www.mitigation-contributions.org

Shown fair contributions only indicative  
"Fair" contributions for a global 'least-cost' 2°C track:  
LEADER Leader  
CDC Common-but-diff. per-cap. convergence  
ECPC50 Eq. cum. Per-capita since 1950  
ECPC90 Eq. cum. Per-capita since 1990  
GDR Greenhouse Development Rights  
#N/A No available data