

Shown: 2025 & 2030: Min/max of unconditional and conditional targets

Paris Agreement ratified on: 04/01/2017

Cyprus

Per-Capita Emissions in 2030 rel. 2015 (excl. LULUCF): **-29%**

NDC 2025

NDC 2030

2015 World Rank

2025 World Rank

2030 World Rank

Share of World Emissions excl. LULUCF (Rank):

0.0% #149

0.0% #153

0.0% #154

Per-Capita Emissions (tCO2eq/cap)

6.9t #62

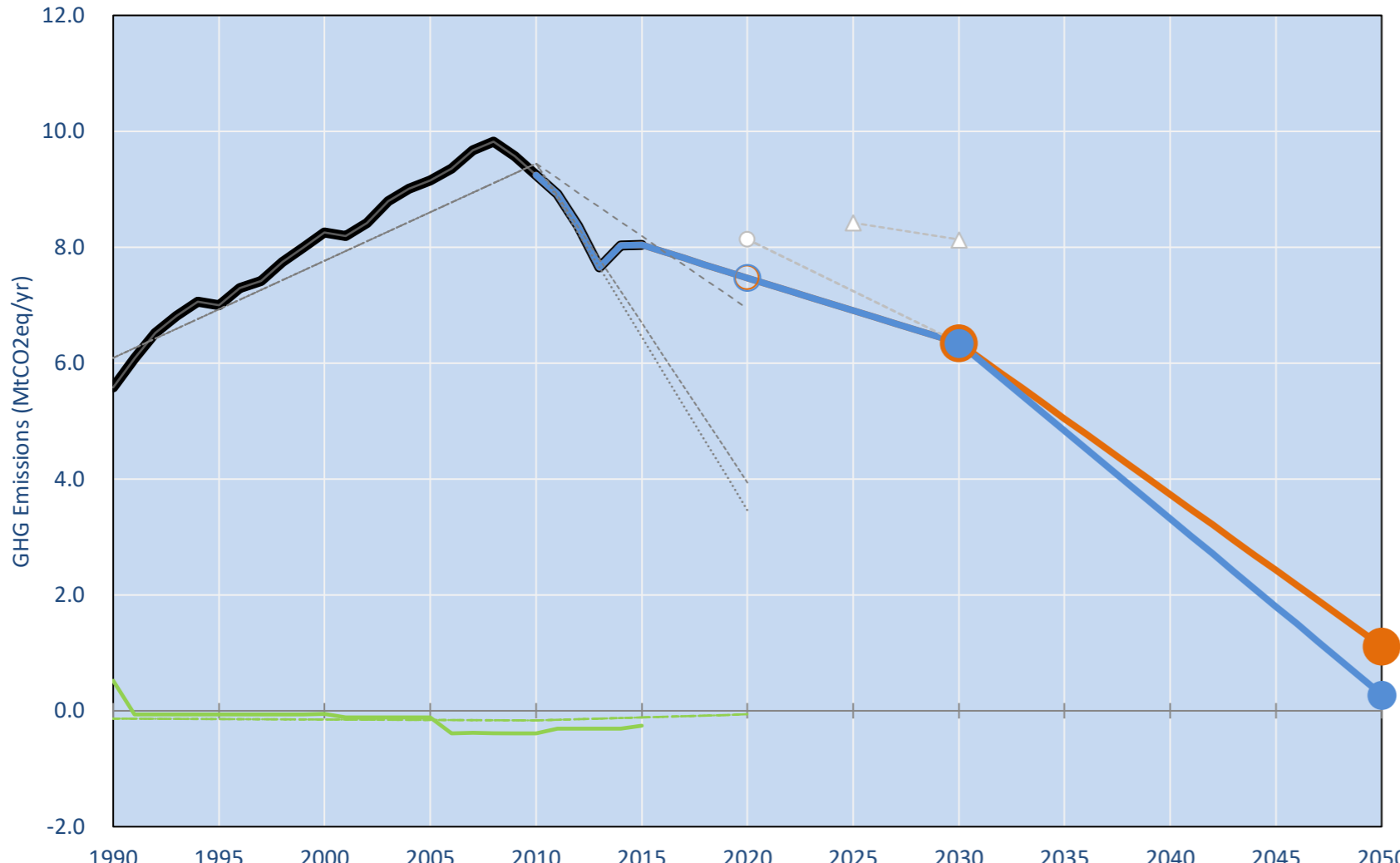
5.5t #85

4.9t #94

NDC: Contributing to the joint EU28 INDC with intra-EU split up of Emission Trading System and Effort Sharing Sectors.. (GWP AR4)

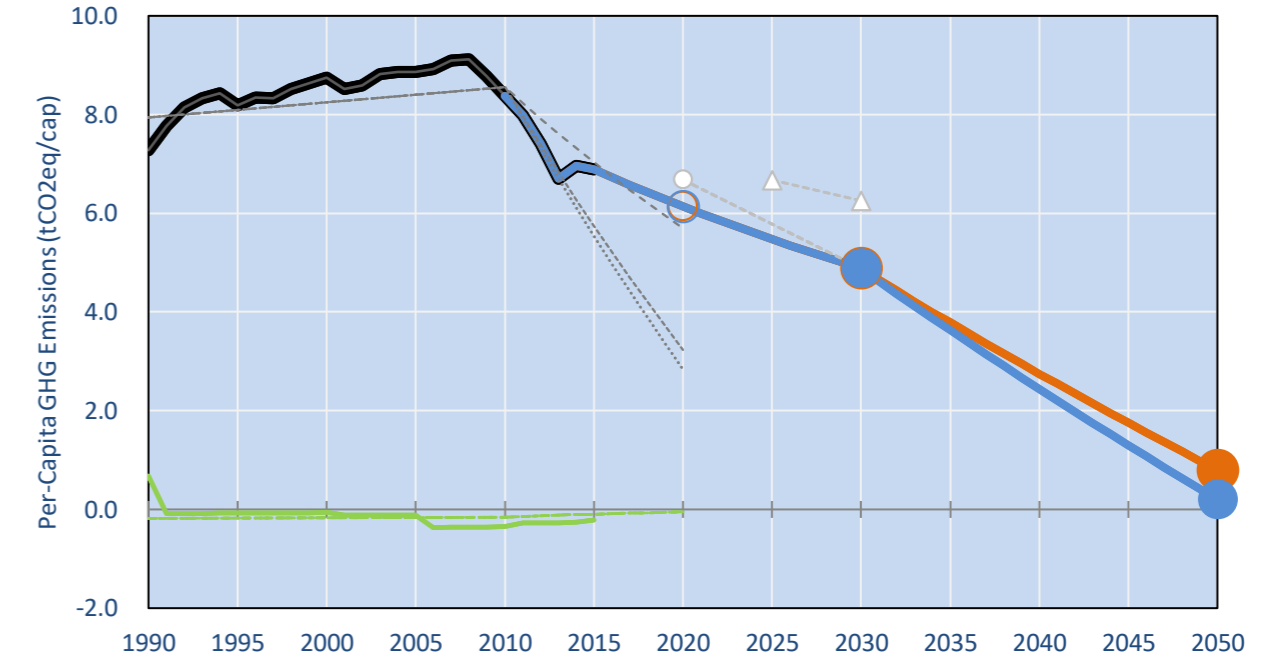
INDC Submitted: 6/03/2015

GHG Emissions

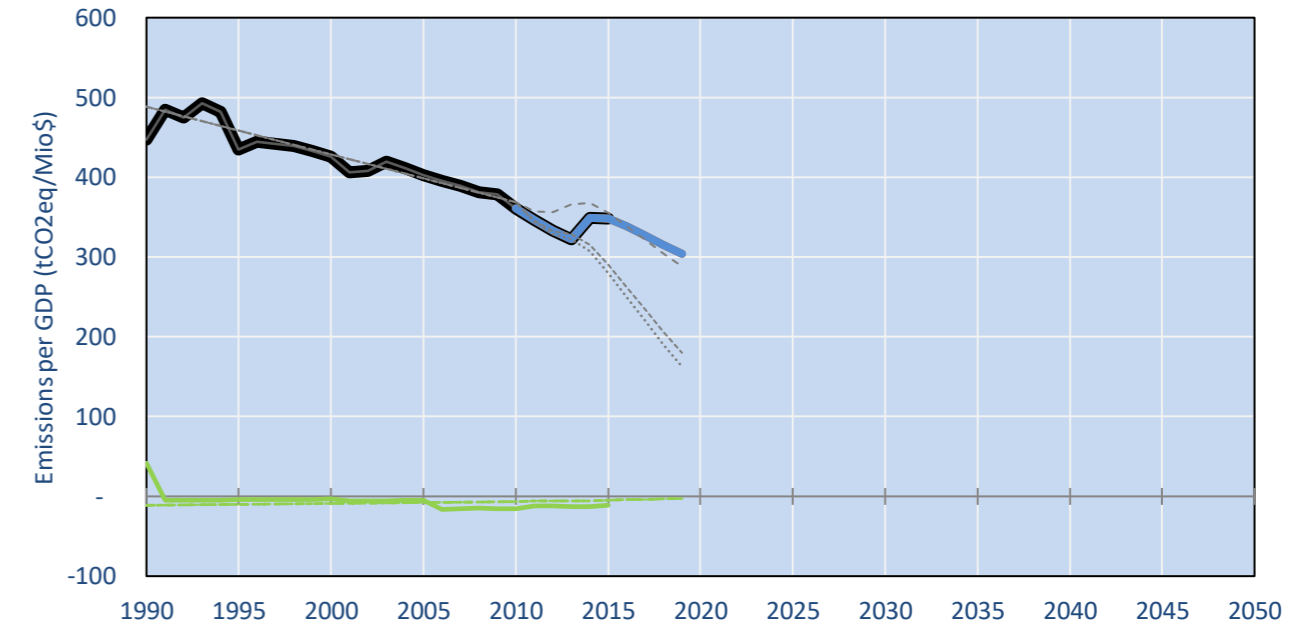


- Reference Total GHG excl. LULUCF
- Historical Covered Emissions, incl. LULUCF, if covered.
- LOW INDC Covered Emissions, incl. LULUCF if covered
- LOW INDC Covered + Non-Covered Emissions, excl. LULUCF
- HIGH INDC Covered Emissions, incl. LULUCF
- HIGH INDC Covered + Non-Covered Emissions, excl. LULUCF
- HIGH Cancun Pledges
- LOW Cancun Pledges
- NM Total excl. LULUCF Projections
- WAM Total excl. LULUCF Projections
- NM LULUCF Projections
- WAM LULUCF Projections
- Approx. 2030 EU MS target (-23% ESD + -43% ETS)
- Regional/Gas-specific BAU
- Not-covered GHG excl. LULUCF (Region Projection)
- Reference LULUCF Emissions
- LOW INDC Levels
- HIGH INDC Levels

Per-Capita Emissions

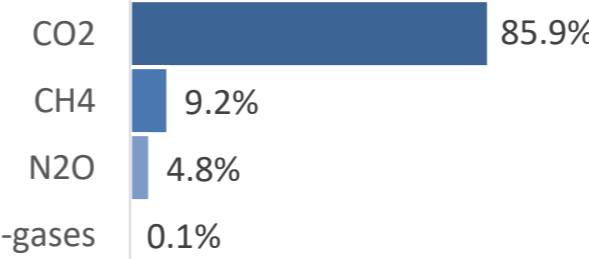


GHG Emissions per GDP

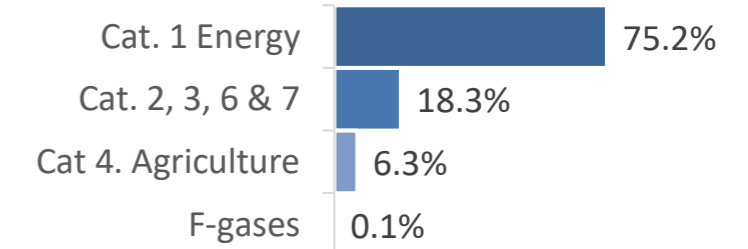


2015 Total GHG Emissions excl. LULUCF

By Gas:



By Sector:



GHG Emissions

	1990	2000	2005	2010	2015	2020		2025		2030	
(MtCO2eq/yr in GWP SAR)						low	high	low	high	low	high
Assumed LULUCF Accounting Credits (-)/Debits (+)						0	0				
NDC covered LULUCF Emissions											
NDC covered Emissions excl. LULUCF	6	8	9	9	8	7	7	7	7	6	6
Total GHG excl. LULUCF	6	8	9	9	8	7	7	7	7	6	6
Total GHG incl. LULUCF	6	8	9	9	8	7	7	7	7	6	6

Relative GHG Emissions

	1990	2000	2005	2010	2015	2020		2025		2030	
Total excl. LULUCF						low	high	low	high	low	high
Relative 1990	100%	148%	164%	166%	144%	134%	134%	124%	124%	114%	114%
Relative 2000	68%	100%	111%	112%	97%	91%	91%	84%	84%	77%	77%
Relative 2005	61%	90%	100%	101%	88%	82%	82%	76%	76%	69%	69%
Relative 2010	60%	89%	99%	100%	87%	81%	81%	75%	75%	69%	69%
Relative 2015	69%	103%	114%	115%	100%	93%	93%	86%	86%	79%	79%

Per-Capita Emissions

	1990	2000	2005	2010	2015	2020		2025		2030	
Total excl. LULUCF						low	high	low	high	low	high
Population (Mio)	1	1	1	1	1	1	1	1	1	1	1
Per-Capita Emissions (tCO2eq/cap)	7.3	8.8	8.9	8.4	6.9	6.1	6.1	5.5	5.5	4.9	4.9
Relative 1990	100%	120%	122%	115%	95%	84%	84%	75%	75%	67%	67%
Relative 2000	83%	100%	101%	96%	79%	70%	70%	63%	63%	56%	56%
Relative 2005	82%	99%	100%	95%	78%	69%	69%	62%	62%	55%	55%
Relative 2010	87%	104%	106%	100%	82%	73%	73%	65%	65%	58%	58%
Relative 2015	106%	127%	129%	121%	100%	89%	89%	79%	79%	71%	71%

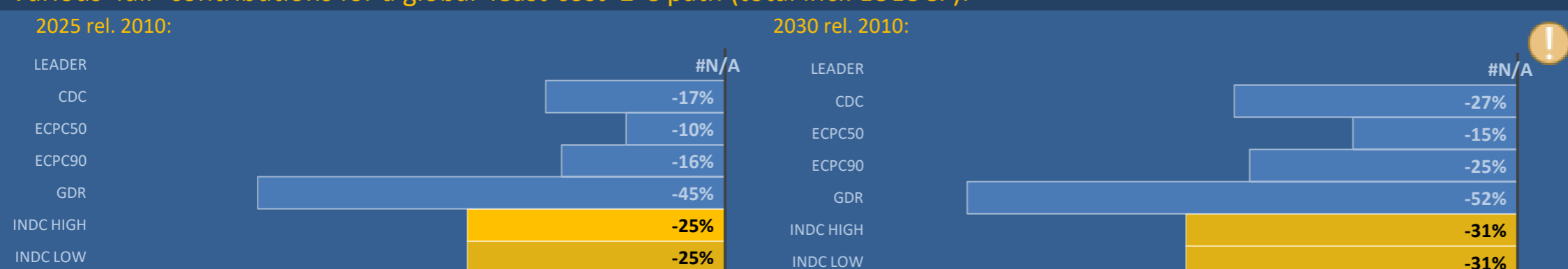
Data Sources:

Cat1_CO2	PRIMAPHIST17	Cat5A1_CO2	UNFCCC CRF + Nat. Comms.
Cat2367_CO2	PRIMAPHIST17	Cat5A2_CO2	UNFCCC CRF + Nat. Comms.
Cat4_CO2	PRIMAPHIST17	Cat5LtoNonFL_CO2	UNFCCC CRF + Nat. Comms.
Cat5_CO2	PRIMAPHIST17	Cat5GMCMWMM_C	UNFCCC CRF + Nat. Comms.
Cat1_CH4	PRIMAPHIST17	Cat5A1ForestFires	UNFCCC Cat5 + EDGAR(IPCC Database)
Cat2367_CH4	PRIMAPHIST17	Cat5A1HWP_CO2	UNFCCC CRF + Nat. Comms.
Cat4_CH4	PRIMAPHIST17	Cat5bisA_CO2	UNFCCC CRF + NATCOMM.
Cat5_CH4	PRIMAPHIST17	Cat5bisB_CO2	UNFCCC CRF + NATCOMM.
Cat1_N2O	PRIMAPHIST17	Cat5bisC_CO2	UNFCCC CRF + NATCOMM.
Cat2367_N2O	PRIMAPHIST17	Cat5bisD_CO2	UNFCCC CRF + NATCOMM.
Cat4_N2O	PRIMAPHIST17	Cat5bisE_CO2	UNFCCC CRF + NATCOMM.
Cat5_N2O	PRIMAPHIST17	PRO_WM_Cat5_G	UNFCCC Annex I Reports
Cat0_HFCs	PRIMAPHIST17	Metric	GWP SAR
Cat0_PFCs	PRIMAPHIST17		
Cat0_SF6	PRIMAPHIST17		
Population	UN 2015 Population Projections MEDIUM		
GDP	IMF WEO 2015, PPP adjusted GDP, constant 2009 prices...		
IPCC WG3 Scenario	IMAGE AMPERE2-550-FullTech-HST		
PRIMAPHIST16 description:	www.pik-potsdam.de/primap-live/primap-hist/		
Gratefully acknowledged in particular:	PRIMAP, CAIT, CDIAC, EDGAR, IPCC, IEA, UNEP Gap Team, AMPERE Team and comments on earlier versions, in particular by Giacomo Grassi. Errors and misjudgements are our own. Malte Meinshausen & Ryan Alexander; The "Fiji COP23" Edition was enabled through support via the BMUB project UM14 41 4060		
This Factsheet is available at	www.climatecollege.unimelb.edu.au/indc-factsheets. Check out as well: www.climateactiontracker.org, www.mitigation-contributions.org, cait.wri.org, infographics.pbl.nl/indc, live.primap.org, www.unep.org/climatechange/pledgepipeline, and our twitter feed @ClimateCollege		

climatecollege.unimelb.edu.au



Various 'fair' contributions for a global 'least-cost' 2°C path (total incl. LULUCF):



More info on www.mitigation-contributions.org

Shown fair contributions only indicative

"Fair" contributions for a global 'least-cost' 2°C track:

- LEADER Leader
- CDC Common-but-diff. per-cap. convergence
- ECPC50 Eq. cum. Per-capita since 1950
- ECPC90 Eq. cum. Per-capita since 1990
- GDR Greenhouse Development Rights
- #N/A No available data