

Shown: 2025 & 2030: Min/max of unconditional and conditional targets

Paris Agreement ratified on: 24/05/2017

Croatia

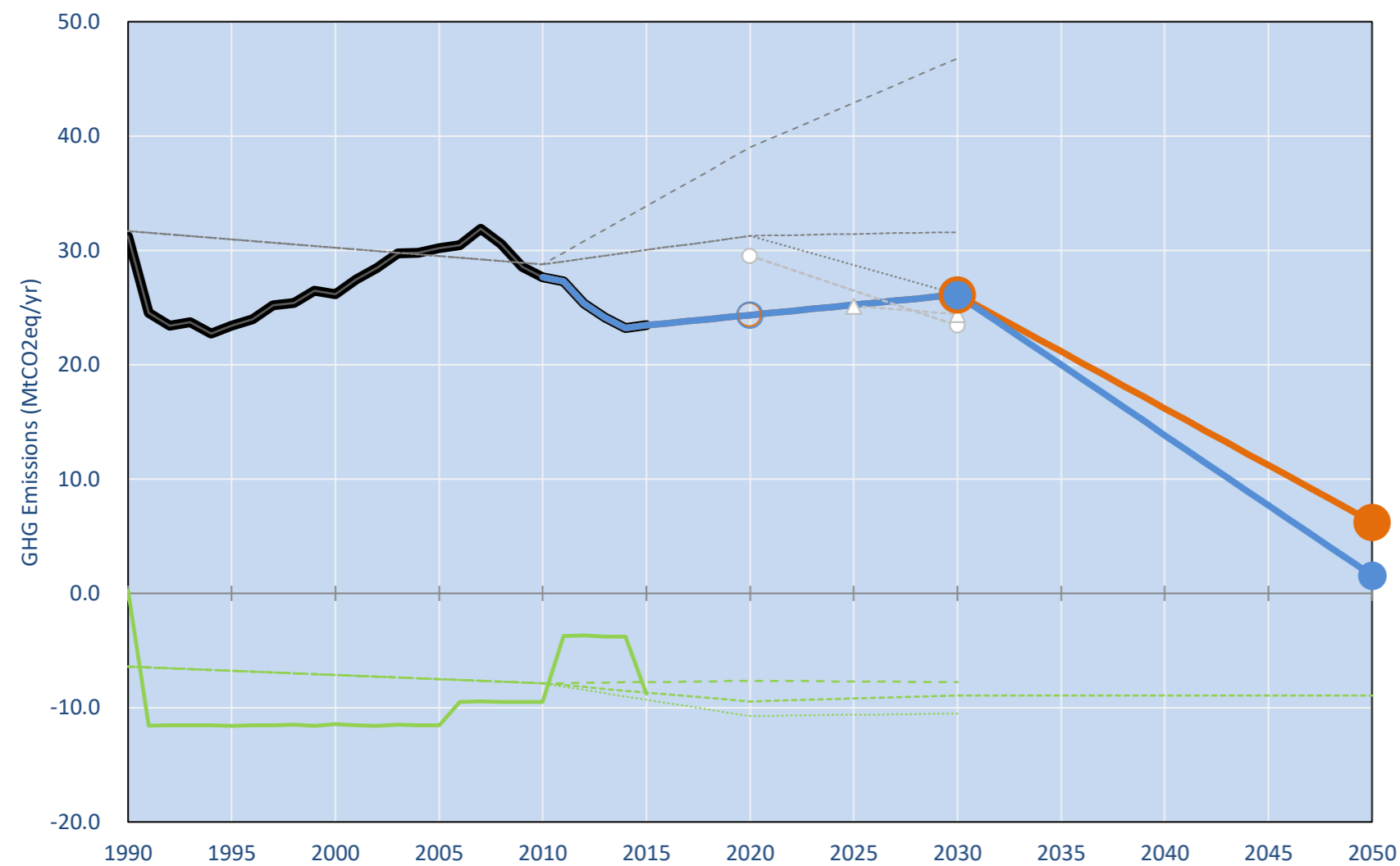
Per-Capita Emissions in 2030 rel. 2015 (excl. LULUCF): **+19%**

NDC 2025	NDC 2030	2015 World Rank	2025 World Rank	2030 World Rank
Share of World Emissions excl. LULUCF (Rank):	0.1% #114	0.0% #117	0.0% #118	0.0% #118
Per-Capita Emissions (tCO2eq/cap)	5.5t #80	6.2t #74	6.6t #68	

NDC: Contributing to the joint EU28 INDC with intra-EU split up of Emission Trading System and Effort Sharing Sectors.. (GWP AR4)

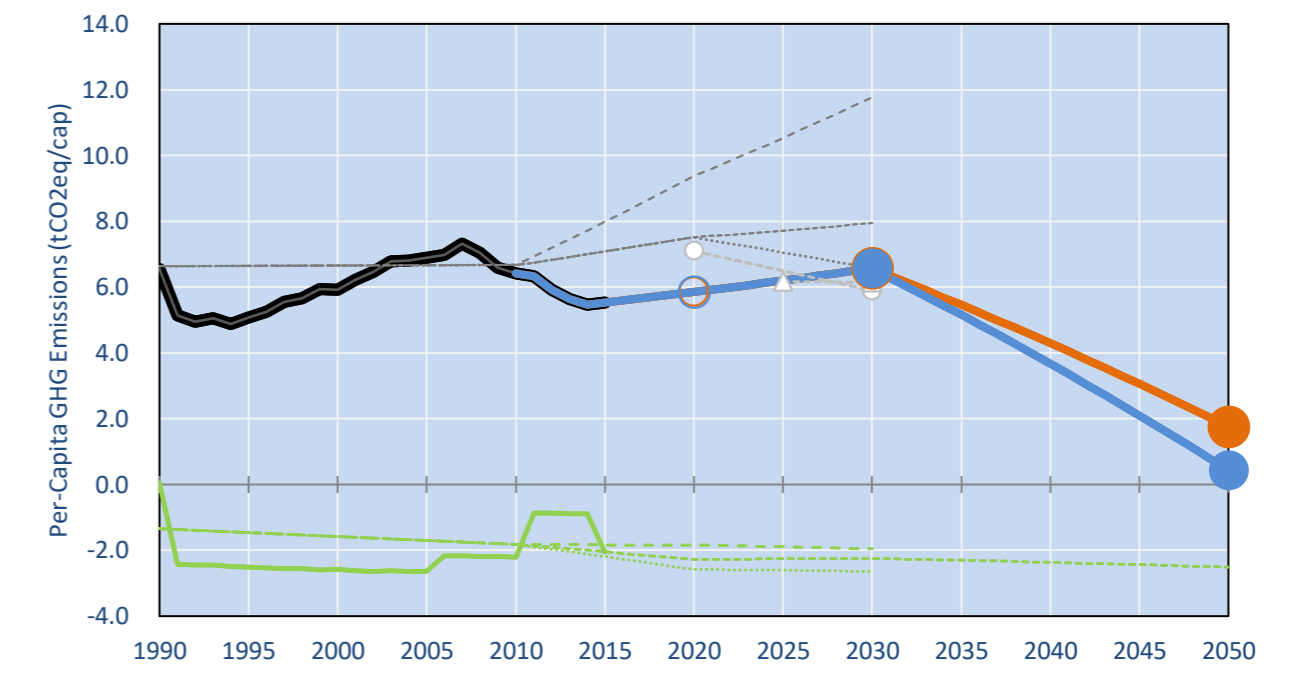
INDC Submitted: 6/03/2015

GHG Emissions

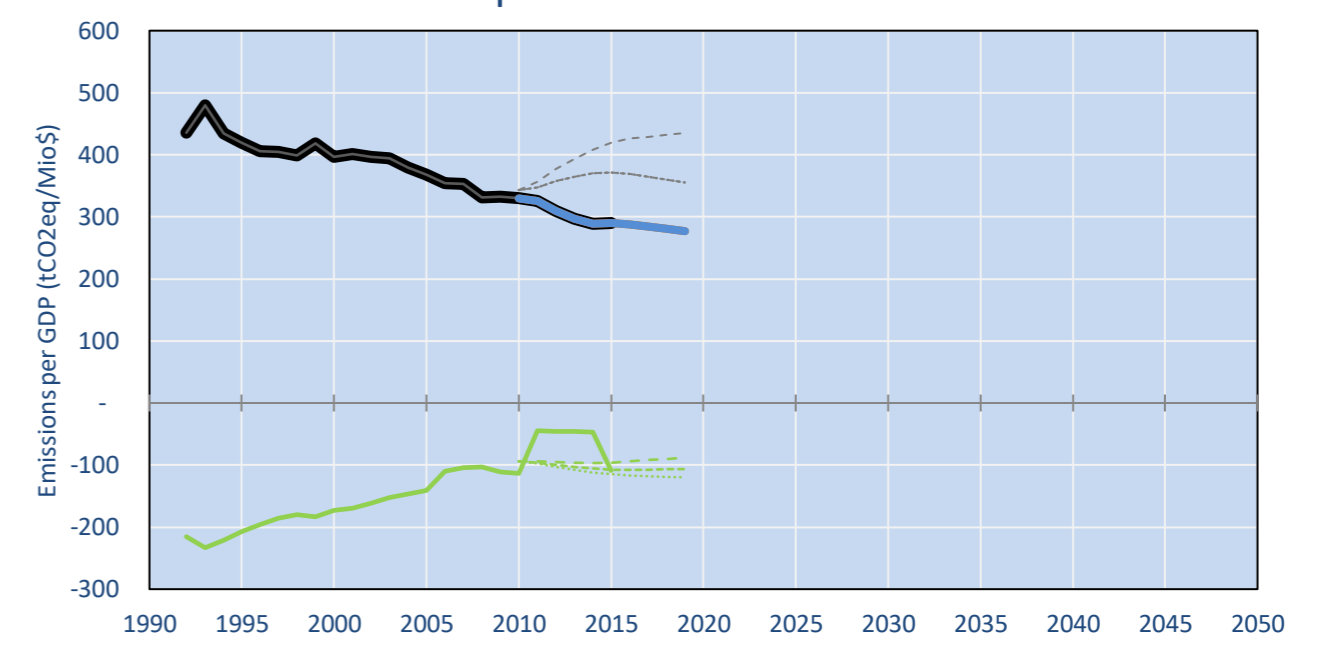


- Reference Total GHG excl. LULUCF
- Historical Covered Emissions, incl. LULUCF, if covered.
- LOW INDC Covered Emissions, incl. LULUCF if covered
- LOW INDC Covered + Non-Covered Emissions, excl. LULUCF
- HIGH INDC Covered Emissions, incl. LULUCF
- HIGH INDC Covered + Non-Covered Emissions, excl. LULUCF
- HIGH Cancun Pledges
- LOW Cancun Pledges
- NM Total excl. LULUCF Projections
- WAM Total excl. LULUCF Projections
- NM LULUCF Projections
- WAM LULUCF Projections
- Approx. 2030 EU MS target (-8% ESD + -43% ETS)
- Regional/Gas-specific BAU
- Not-covered GHG excl. LULUCF (Region Projection)

Per-Capita Emissions



GHG Emissions per GDP



2015 Total GHG Emissions excl. LULUCF

By Gas:	By Sector:
CO2: 77.9%	Cat. 1 Energy: 72.3%
CH4: 12.3%	Cat. 2, 3, 6 & 7: 16.1%
N2O: 8.3%	Cat 4. Agriculture: 10.2%
F-gases: 1.4%	F-gases: 1.4%

GHG Emissions

	1990	2000	2005	2010	2015	2020	2025	2030	
(MtCO2eq/yr in GWP SAR)						low	high	low	high
Assumed LULUCF Accounting Credits (-)/Debits (+)						2	2	3	3
NDC covered LULUCF Emissions									
NDC covered Emissions excl. LULUCF	31	26	30	28	23	24	24	25	26
Total GHG excl. LULUCF	31	26	30	28	23	24	24	25	26
Total GHG incl. LULUCF	31	15	19	18	15	15	15	16	17

Relative GHG Emissions

	1990	2000	2005	2010	2015	2020	2025	2030	
Total excl. LULUCF						low	high	low	high
Relative 1990	100%	84%	97%	89%	75%	78%	78%	81%	81%
Relative 2000	119%	100%	115%	106%	90%	93%	93%	96%	96%
Relative 2005	104%	87%	100%	92%	78%	81%	81%	84%	84%
Relative 2010	113%	95%	109%	100%	85%	88%	88%	91%	91%
Relative 2015	133%	112%	129%	118%	100%	104%	104%	108%	108%

Per-Capita Emissions

	1990	2000	2005	2010	2015	2020	2025	2030	
Total excl. LULUCF						low	high	low	high
Population (Mio)	5	4	4	4	4	4	4	4	4
Per-Capita Emissions (tCO2eq/cap)	6.5	5.9	6.9	6.4	5.5	5.8	5.8	6.2	6.2
Relative 1990	100%	90%	105%	98%	85%	89%	89%	95%	95%
Relative 2000	111%	100%	117%	108%	94%	99%	99%	105%	105%
Relative 2005	95%	86%	100%	93%	80%	85%	85%	90%	90%
Relative 2010	102%	92%	108%	100%	86%	91%	91%	97%	97%
Relative 2015	118%	107%	125%	116%	100%	106%	106%	112%	112%

Data Sources:

Cat1_CO2	PRIMAPHIST17	Cat5A1_CO2	UNFCCC CRF + Nat. Comms.
Cat2367_CO2	PRIMAPHIST17	Cat5A2_CO2	UNFCCC CRF + Nat. Comms.
Cat4_CO2	PRIMAPHIST17	Cat5LtoNonFL_CO	UNFCCC CRF + Nat. Comms.
Cat5_CO2	PRIMAPHIST17	Cat5GMCMWMM_C	UNFCCC CRF + Nat. Comms.
Cat1_CH4	PRIMAPHIST17	Cat5A1ForestFires	UNFCCC Cat5 + EDGAR(IPCC Database)
Cat2367_CH4	PRIMAPHIST17	Cat5A1HWP_CO2	UNFCCC CRF + Nat. Comms.
Cat4_CH4	PRIMAPHIST17	Cat5bisA_CO2	UNFCCC CRF + NATCOMM.
Cat5_CH4	PRIMAPHIST17	Cat5bisB_CO2	UNFCCC CRF + NATCOMM.
Cat1_N2O	PRIMAPHIST17	Cat5bisC_CO2	UNFCCC CRF + NATCOMM.
Cat2367_N2O	PRIMAPHIST17	Cat5bisD_CO2	UNFCCC CRF + NATCOMM.
Cat4_N2O	PRIMAPHIST17	Cat5bisE_CO2	UNFCCC CRF + NATCOMM.
Cat5_N2O	PRIMAPHIST17	PRO_WM_Cat5_G	UNFCCC Annex I Reports
Cat0_HFCs	PRIMAPHIST17	Metric	GWP SAR
Cat0_PFCs	PRIMAPHIST17		
Cat0_SF6	PRIMAPHIST17		
Population	UN 2015 Population Projections MEDIUM		
GDP	IMF WEO 2015, PPP adjusted GDP, constant 2009 prices...		
IPCC WG3 Scenario	IMAGE AMPERE2-550-FullTech-HST		
PRIMAPHIST16 description:	www.pik-potsdam.de/primap-live/primap-hist/		
Gratefully acknowledged in particular:	PRIMAP, CAIT, CDIAC, EDGAR, IPCC, IEA, UNEP Gap Team, AMPERE Team and comments on earlier versions, in particular by Giacomo Grassi. Errors and misjudgements are our own. Malte Meinshausen & Ryan Alexander; The "Fiji COP23" Edition was enabled through support via the BMUB project UM14 41 4060		
This Factsheet is available at	www.climatecollege.unimelb.edu.au/indc-factsheets. Check out as well: www.climateactiontracker.org, www.mitigation-contributions.org, cait.wri.org, infographics.pbl.nl/indc, live.primap.org, www.unep.org/climatechange/pledgepipeline, and our twitter feed @ClimateCollege		
		climatecollege.unimelb.edu.au	
		AUSTRALIAN-GERMAN CLIMATE & ENERGY COLLEGE	

Various 'fair' contributions for a global 'least-cost' 2°C path (total incl. LULUCF):

2025 rel. 2010:	2030 rel. 2010:	2025 rel. 2010:	2030 rel. 2010:
LEADER	#N/A	LEADER	#N/A
CDC	#N/A	CDC	#N/A
ECPC50	#N/A	ECPC50	#N/A
ECPC90	#N/A	ECPC90	#N/A
GDR	#N/A	GDR	#N/A
INDC HIGH	-12%	INDC HIGH	-5%
INDC LOW	-12%	INDC LOW	-5%

More info on www.mitigation-contributions.org

"Fair" contributions for a global 'least-cost' 2°C track:
 LEADER: Leader
 CDC: Common-but-diff. per-cap. convergence
 ECPC50: Eq. cum. Per-capita since 1950
 ECPC90: Eq. cum. Per-capita since 1990
 GDR: Greenhouse Development Rights
 #N/A: No available data