



Congo

Per-Capita Emissions in 2030 rel. 2015 (excl. LULUCF): **-11%**

NDC 2025

NDC 2030

2015 World Rank

2025 World Rank

2030 World Rank

0% rel. BAU of 17 Mt

Share of World Emissions excl. LULUCF (Rank):

0.0% #138

0.0% #140

0.0% #139

-48% rel. BAU of 17 Mt

Per-Capita Emissions (tCO2eq/cap)

2.3t #137

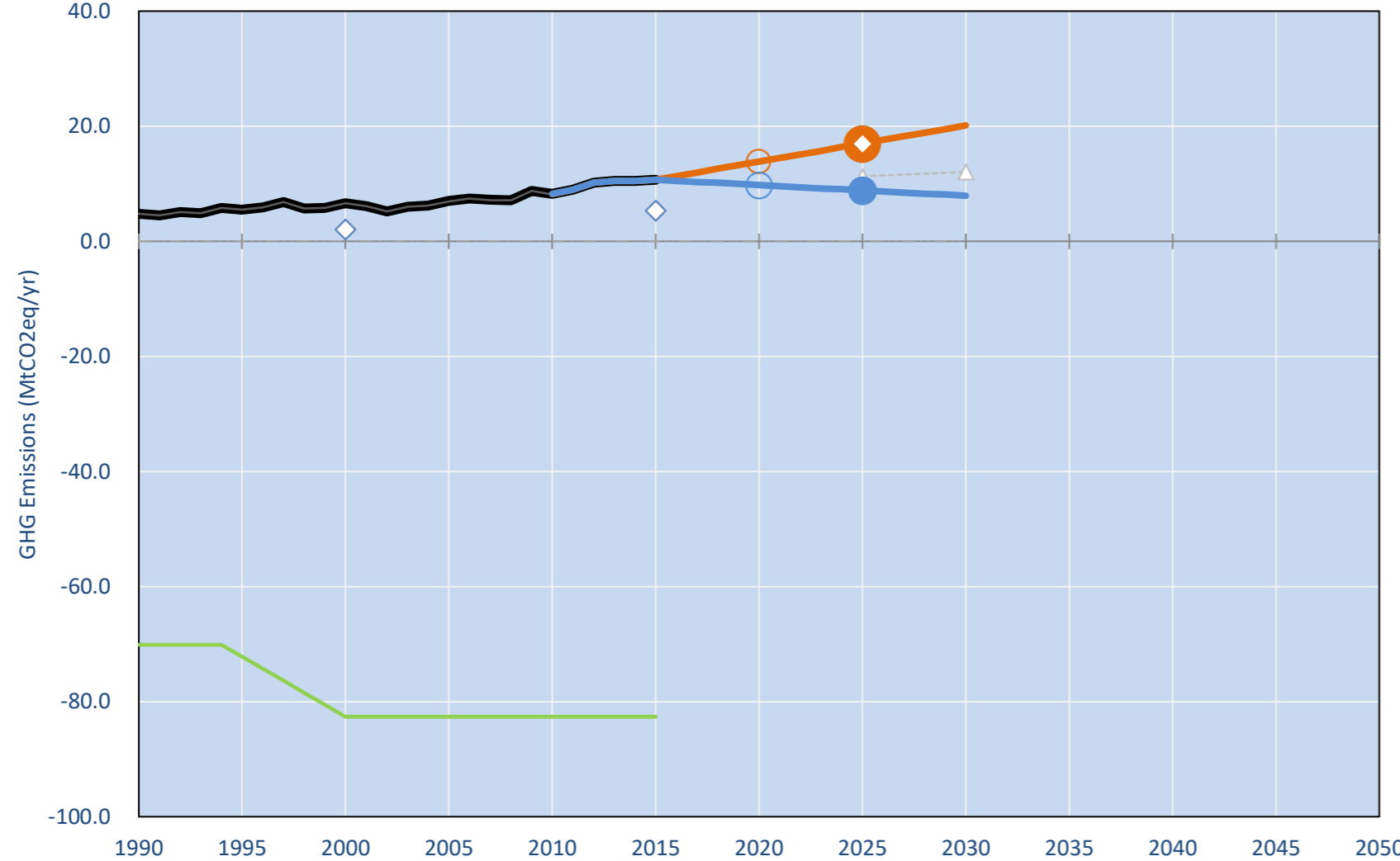
2.2t #144

2.1t #148

NDC: Conditional: At least 48% GHG emission reduction compared to BAU by 2025 and 55% by 2035. (GWP SAR)

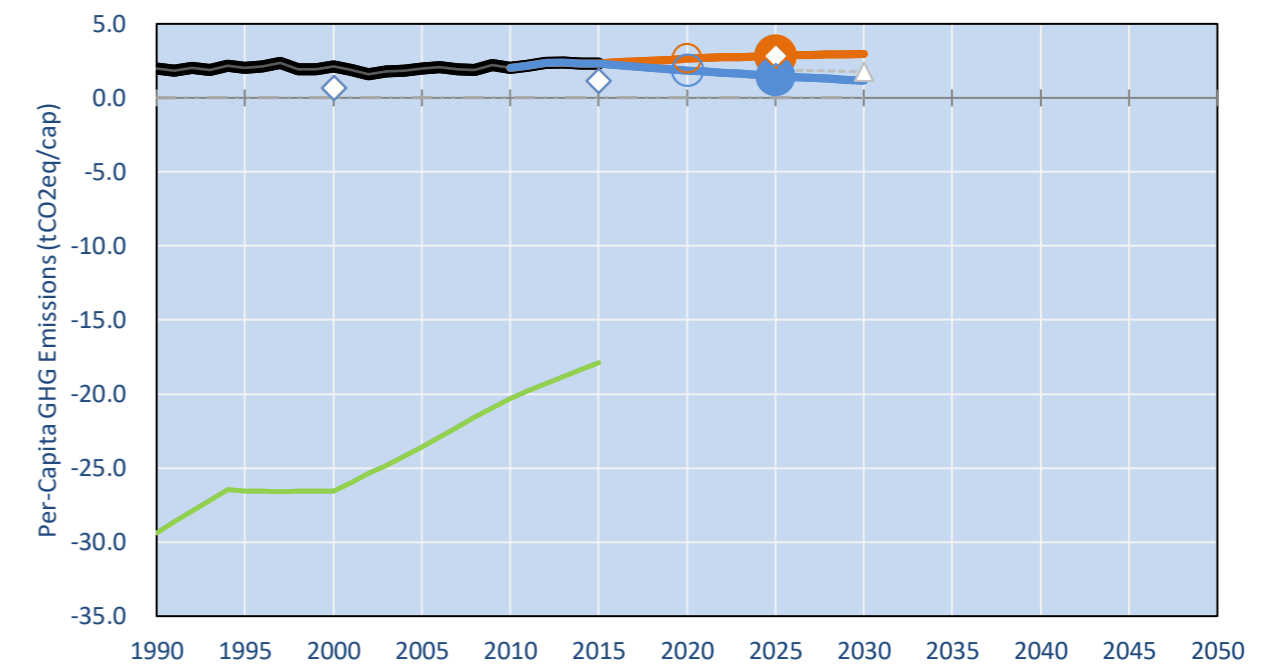
INDC Submitted: 29/09/2015

GHG Emissions

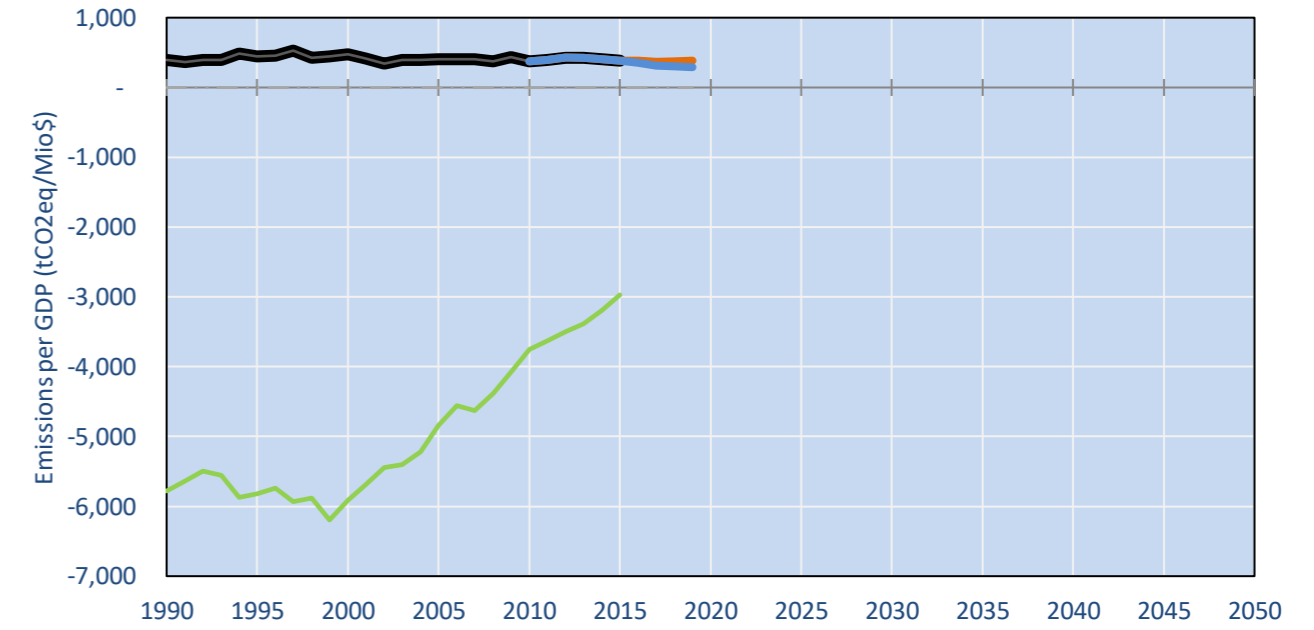


- Reference Total GHG excl. LULUCF
- Historical Covered Emissions, incl. LULUCF, if covered.
- LOW INDC Covered Emissions, incl. LULUCF if covered
- LOW INDC Covered + Non-Covered Emissions, excl. LULUCF
- HIGH INDC Covered Emissions, incl. LULUCF
- HIGH INDC Covered + Non-Covered Emissions, excl. LULUCF
- HIGH Cancun Pledges
- Congo INDC Total excl. Cond. GWP SAR
- Not-covered GHG excl. LULUCF (Region Projection)
- Reference LULUCF Emissions
- LOW INDC Levels
- LOW INDC Covered Emissions, excl. LULUCF
- HIGH INDC Levels
- HIGH INDC Covered Emissions, excl. LULUCF
- LOW Cancun Pledges
- Congo INDC Total excl. LULUCF (GWP SAR)
- Regional/Gas-specific BAU

Per-Capita Emissions



GHG Emissions per GDP



2015 Total GHG Emissions excl. LULUCF

By Gas:

CO2 29.0%
CH4 57.8%
N2O 13.1%
F-gases 0.1%

By Sector:

Cat. 1 Energy 71.8%
Cat. 2, 3, 6 & 7 10.3%
Cat 4. Agriculture 17.8%
F-gases 0.1%

GHG Emissions

	1990	2000	2005	2010	2015	2020	2025	2030	
(MtCO2eq/yr in GWP SAR)						low	high	low	high
Assumed LULUCF Accounting Credits (-)/Debits (+)									
NDC covered LULUCF Emissions									
NDC covered Emissions excl. LULUCF	5	7	7	8	11	14	10	17	9
Total GHG excl. LULUCF	5	7	7	8	11	14	10	17	9
Total GHG incl. LULUCF	-	65	-	76	-	76	-	74	-

Relative GHG Emissions

	1990	2000	2005	2010	2015	2020	2025	2030	
Total excl. LULUCF						low	high	low	high
Relative 1990	100%	139%	147%	173%	226%	292%	206%	359%	187%
Relative 2000	72%	100%	106%	124%	162%	210%	148%	258%	134%
Relative 2005	68%	95%	100%	118%	153%	198%	140%	244%	127%
Relative 2010	58%	80%	85%	100%	130%	169%	119%	207%	108%
Relative 2015	44%	62%	65%	77%	100%	129%	91%	159%	83%

Per-Capita Emissions

	1990	2000	2005	2010	2015	2020	2025	2030	
Total excl. LULUCF						low	high	low	high
Population (Mio)	2	3	4	4	5	5	5	6	6
Per-Capita Emissions (tCO2eq/cap)	2.0	2.1	2.0	2.0	2.3	2.6	1.9	2.8	1.5
Relative 1990	100%	107%	100%	102%	117%	133%	94%	143%	75%
Relative 2000	93%	100%	94%	95%	109%	124%	87%	134%	70%
Relative 2005	100%	107%	100%	101%	116%	132%	93%	143%	74%
Relative 2010	98%	105%	99%	100%	115%	130%	92%	141%	73%
Relative 2015	86%	92%	86%	87%	100%	114%	80%	123%	64%

Data Sources:

Cat1_CO2	PRIMAPHIST17	Cat5A1_CO2	UNFCCC CRF + Nat. Comms.
Cat2367_CO2	PRIMAPHIST17	Cat5A2_CO2	UNFCCC CRF + Nat. Comms.
Cat4_CO2	PRIMAPHIST17	Cat5LtoNonFL_CO2	UNFCCC CRF + Nat. Comms.
Cat5_CO2	PRIMAPHIST17	Cat5GMCMWMM_C	UNFCCC CRF
Cat1_CH4	PRIMAPHIST17	Cat5A1ForestFires	UNFCCC Cat5 + EDGAR(IPCC Database)
Cat2367_CH4	PRIMAPHIST17	Cat5A1HWP_CO2	UNFCCC CRF + Nat. Comms.
Cat4_CH4	PRIMAPHIST17	Cat5bisA_CO2	UNFCCC CRF + NATCOMM.
Cat5_CH4	PRIMAPHIST17	Cat5bisB_CO2	UNFCCC CRF + NATCOMM.
Cat1_N2O	PRIMAPHIST17	Cat5bisC_CO2	UNFCCC CRF + NATCOMM.
Cat2367_N2O	PRIMAPHIST17	Cat5bisD_CO2	UNFCCC CRF + NATCOMM.
Cat4_N2O	PRIMAPHIST17	Cat5bisE_CO2	UNFCCC CRF + NATCOMM.
Cat5_N2O	PRIMAPHIST17	PRO_WM_Cat5_G	UNFCCC Annex I Reports
Cat0_HFCs	PRIMAPHIST17	Metric	GWP SAR
Cat0_PFCs	PRIMAPHIST17		
Cat0_SF6	PRIMAPHIST17		
Population	UN 2015 Population Projections MEDIUM		
GDP	IMF WEO 2015, PPP adjusted GDP, constant 2009 prices...		
IPCC WG3 Scenario	IMAGE AMPERE2-550-FullTech-HST		
PRIMAPHIST16 description:	www.pik-potsdam.de/primap-live/primap-hist/		
Gratefully acknowledged in particular:	PRIMAP, CAIT, CDIAC, EDGAR, IPCC, IEA, UNEP Gap Team, AMPERE Team and comments on earlier versions, in particular by Giacomo Grassi. Errors and misjudgements are our own. Malte Meinshausen & Ryan Alexander; The "Fiji COP23" Edition was enabled through support via the BMUB project UM14 41 4060		
This Factsheet is available at	www.climatecollege.unimelb.edu.au/indc-factsheets. Check out as well: www.climateactiontracker.org, www.mitigation-contributions.org, cait.wri.org, infographics.pbl.nl/indc, live.primap.org, www.unep.org/climatechange/pledgepipeline, and our twitter feed @ClimateCollege		

climatecollege.unimelb.edu.au



Various 'fair' contributions for a global 'least-cost' 2°C path (total incl. LULUCF):

2025 rel. 2010:	2030 rel. 2010:
LEADER	#N/A
CDC	#N/A
ECPC50	#N/A
ECPC90	#N/A
GDR	#N/A
INDC HIGH	#N/A
INDC LOW	#N/A

More info on www.mitigation-contributions.org

No results shown, as 2010 total incl. LULUCF emissions below zero
"Fair" contributions for a global 'least-cost' 2°C track:
LEADER Leader
CDC Common-but-diff. per-cap. convergence
ECPC50 Eq. cum. Per-capita since 1950
ECPC90 Eq. cum. Per-capita since 1990
GDR Greenhouse Development Rights
#N/A No available data