

Central African Republic

Per-Capita Emissions in 2030 rel. 2015 (excl. LULUCF): **-22%**

NDC 2025

NDC 2030

2015 World Rank

2025 World Rank

2030 World Rank

0% rel. BAU of 31.2 Mt

Share of World Emissions excl. LULUCF (Rank):

0.1% #110

0.1% #115

0.1% #116

-5% rel. BAU of 31.2 Mt

Per-Capita Emissions (tCO₂eq/cap)

5.7t #79

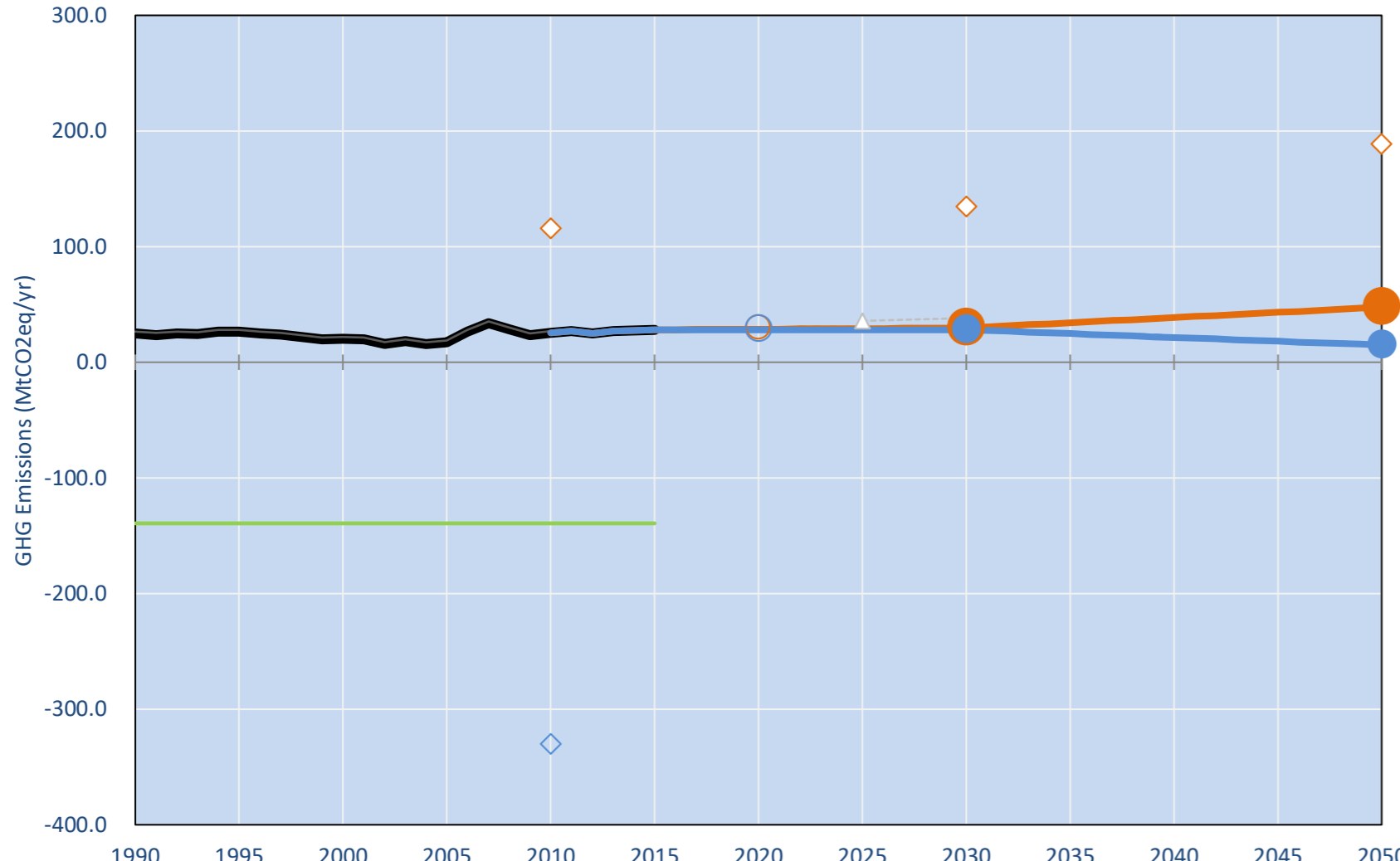
4.8t #101

4.4t #104

NDC: Conditional target of 5% below BAU by 2030. (GWP unclear)

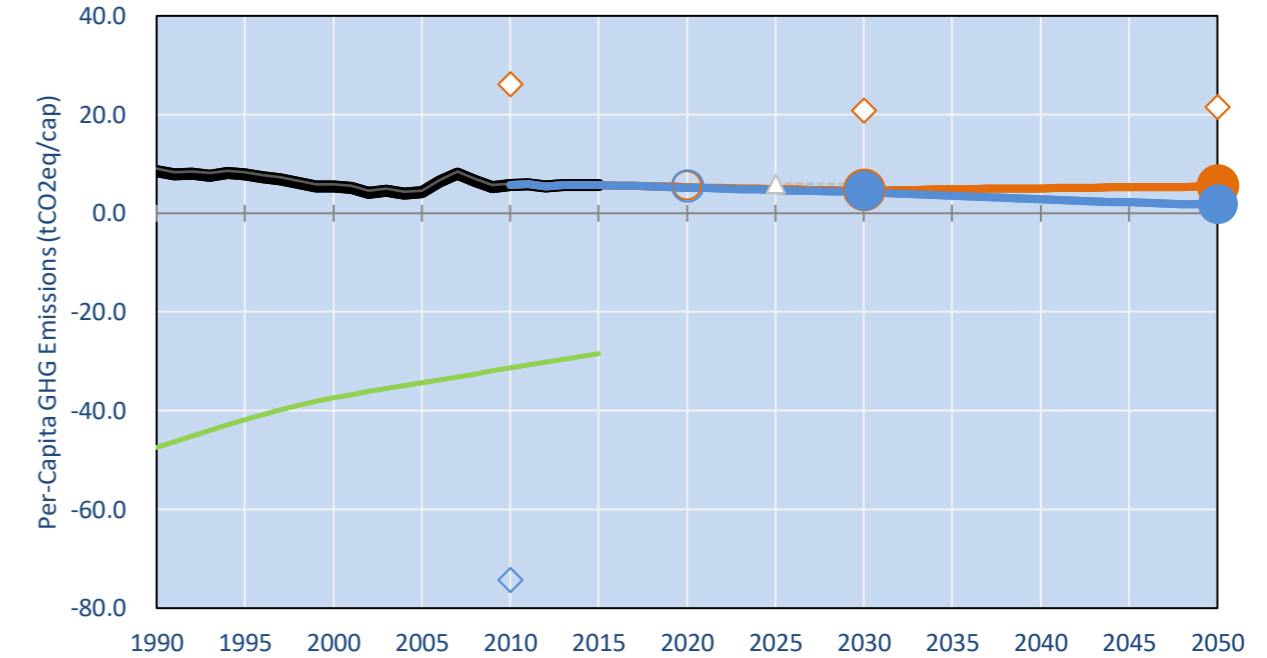
INDC Submitted: 28/09/2015

GHG Emissions

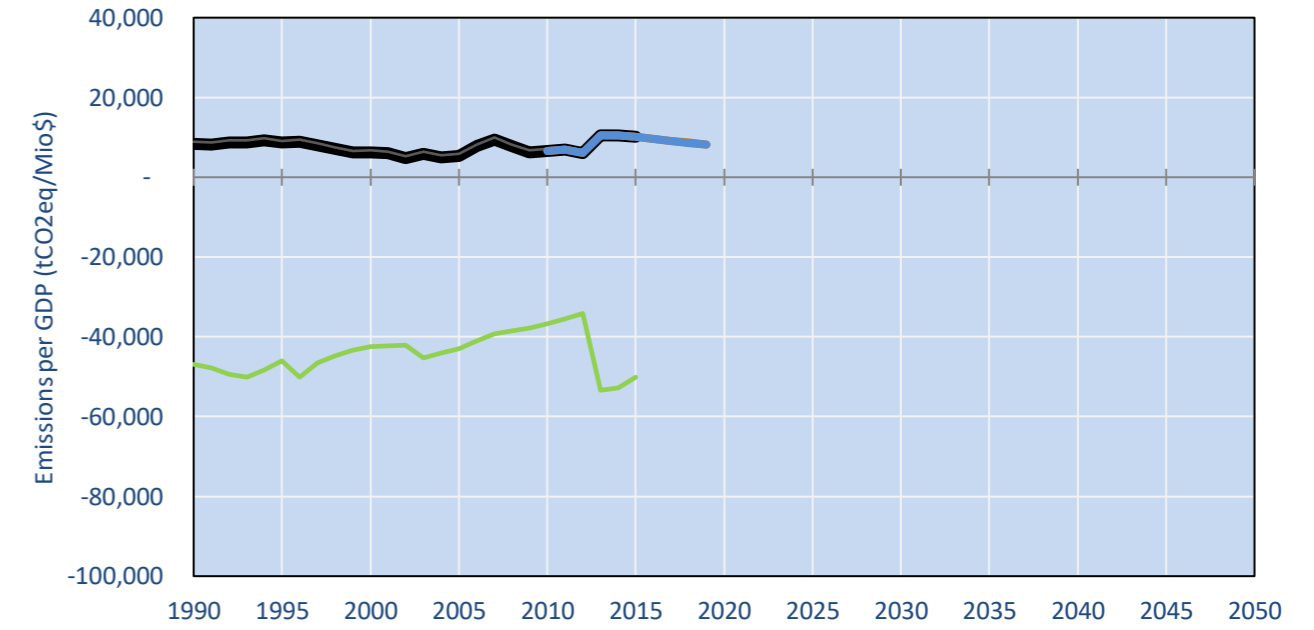


- Reference Total GHG excl. LULUCF
- Historical Covered Emissions, incl. LULUCF, if covered.
- LOW INDC Covered Emissions, incl. LULUCF if covered
- LOW INDC Covered + Non-Covered Emissions, excl. LULUCF
- HIGH INDC Covered Emissions, incl. LULUCF
- HIGH INDC Covered + Non-Covered Emissions, excl. LULUCF
- HIGH Cancun Pledges
- Reference LULUCF Emissions
- LOW INDC Levels
- LOW INDC Covered Emissions, excl. LULUCF
- HIGH INDC Levels
- HIGH INDC Covered Emissions, excl. LULUCF
- LOW Cancun Pledges
- CAF INDC 2010 year
- CAF INDC 2010 sequestration
- Regional/Gas-specific BAU
- Not-covered GHG excl. LULUCF (Region Projection)

Per-Capita Emissions



GHG Emissions per GDP



2015 Total GHG Emissions excl. LULUCF

By Gas:

CO ₂	1.7%
CH ₄	40.3%
N ₂ O	58.0%
F-gases	0.0%

By Sector:

Cat. 1 Energy	4.0%
Cat. 2, 3, 6 & 7	48.5%
Cat 4. Agriculture	47.5%
F-gases	0.0%

GHG Emissions

	1990	2000	2005	2010	2015	2020		2025		2030	
						low	high	low	high	low	high
(MtCO ₂ eq/yr in GWP AR4)											
Assumed LULUCF Accounting Credits (-)/Debits (+)											
NDC covered LULUCF Emissions											
NDC covered Emissions excl. LULUCF	25	20	17	25	28	29	28	29	28	30	28
Total GHG excl. LULUCF	25	20	17	25	28	29	28	29	28	30	28
Total GHG incl. LULUCF	-114	-119	-122	-114	-111	-111	-111	-110	-111	-110	-111

Relative GHG Emissions

	1990	2000	2005	2010	2015	2020		2025		2030	
						low	high	low	high	low	high
Total excl. LULUCF											
Relative 1990	100%	81%	69%	101%	112%	114%	112%	116%	112%	118%	112%
Relative 2000	123%	100%	84%	124%	138%	140%	138%	143%	138%	145%	138%
Relative 2005	146%	119%	100%	147%	163%	166%	163%	169%	163%	172%	163%
Relative 2010	99%	81%	68%	100%	111%	113%	111%	115%	111%	117%	111%
Relative 2015	89%	73%	61%	90%	100%	102%	100%	104%	100%	105%	100%

Per-Capita Emissions

	1990	2000	2005	2010	2015	2020		2025		2030	
						low	high	low	high	low	high
Total excl. LULUCF											
Population (Mio)	3	4	4	4	5	5	5	6	6	6	6
Per-Capita Emissions (tCO ₂ eq/cap)	8.5	5.5	4.2	5.7	5.7	5.3	5.2	4.9	4.7	4.6	4.3
Relative 1990	100%	64%	50%	67%	67%	62%	61%	57%	55%	54%	51%
Relative 2000	156%	100%	77%	104%	105%	97%	95%	89%	86%	83%	79%
Relative 2005	201%	129%	100%	134%	135%	125%	122%	115%	111%	108%	102%
Relative 2010	150%	96%	75%	100%	101%	93%	91%	86%	83%	80%	76%
Relative 2015	149%	96%	74%	99%	100%	92%	91%	85%	82%	80%	75%

Data Sources:

Cat1_CO2	PRIMAPHIST17	Cat5A1_CO2	UNFCCC CRF + Nat. Comms.
Cat2367_CO2	PRIMAPHIST17	Cat5A2_CO2	UNFCCC CRF + Nat. Comms.
Cat4_CO2	PRIMAPHIST17	Cat5LtoNonFL_CO2	UNFCCC CRF + Nat. Comms.
Cat5_CO2	PRIMAPHIST17	Cat5GCMCMWM_C	UNFCCC CRF
Cat1_CH4	PRIMAPHIST17	Cat5A1ForestFires	UNFCCC Cat5 + EDGAR(IPCC Database)
Cat2367_CH4	PRIMAPHIST17	Cat5A1HWP_CO2	UNFCCC CRF + Nat. Comms.
Cat4_CH4	COUNTRY-SPECIFIC USER DATA	Cat5bisA_CO2	UNFCCC CRF + NATCOMM.
Cat5_CH4	PRIMAPHIST17	Cat5bisB_CO2	UNFCCC CRF + NATCOMM.
Cat1_N2O	PRIMAPHIST17	Cat5bisC_CO2	UNFCCC CRF + NATCOMM.
Cat2367_N2O	PRIMAPHIST17	Cat5bisD_CO2	UNFCCC CRF + NATCOMM.
Cat4_N2O	PRIMAPHIST17	Cat5bisE_CO2	UNFCCC CRF + NATCOMM.
Cat5_N2O	PRIMAPHIST17	PRO_WM_Cat5_G	UNFCCC Annex I Reports
Cat0_HFCs	PRIMAPHIST17	Metric	GWP AR4
Cat0_PFCs	PRIMAPHIST17		
Cat0_SF6	PRIMAPHIST17		
Population	UN 2015 Population Projections MEDIUM		
GDP	IMF WEO 2015, PPP adjusted GDP, constant 2009 prices...		
	IPCC WG3 Scenario IMAGE AMPERE2-550-FullTech-HST		
	PRIMAPHIST16 description: www.pik-potsdam.de/primap-live/primap-hist/		
	Gratefully acknowledged in particular: PRIMAP, CAIT, CDIAC, EDGAR, IPCC, IEA, UNEP Gap Team, AMPERE Team and comments on earlier versions, in particular by Giacomo Grassi. Errors and misjudgements are our own. Malte Meinshausen & Ryan Alexander; The "Fiji COP23" Edition was enabled through support via the BMUB project UM14 41 4060		
	This Factsheet is available at www.climatecollege.unimelb.edu.au/indc-factsheets. Check out as well: www.climateactiontracker.org, www.mitigation-contributions.org, cait.wri.org, infographics.pbl.nl/indc, live.primap.org, www.unep.org/climatechange/pledgepipeline, and our twitter feed @ClimateCollege		

Various 'fair' contributions for a global 'least-cost' 2°C path (total incl. LULUCF):

More info on www.mitigation-contributions.org

2025 rel. 2010:		2030 rel. 2010:	
LEADER	#N/A	LEADER	#N/A
CDC	#N/A	CDC	#N/A
ECPC50	#N/A	ECPC50	#N/A
ECPC90	#N/A	ECPC90	#N/A
GDR	#N/A	GDR	#N/A
INDC HIGH	#N/A	INDC HIGH	#N/A
INDC LOW	#N/A	INDC LOW	#N/A

No results shown, as 2010 total incl. LULUCF emissions below zero
"Fair" contributions for a global 'least-cost' 2°C track:

- LEADER Leader
- CDC Common-but-diff. per-cap. convergence
- ECPC50 Eq. cum. Per-capita since 1950
- ECPC90 Eq. cum. Per-capita since 1990
- GDR Greenhouse Development Rights
- #N/A No available data