

# Canada

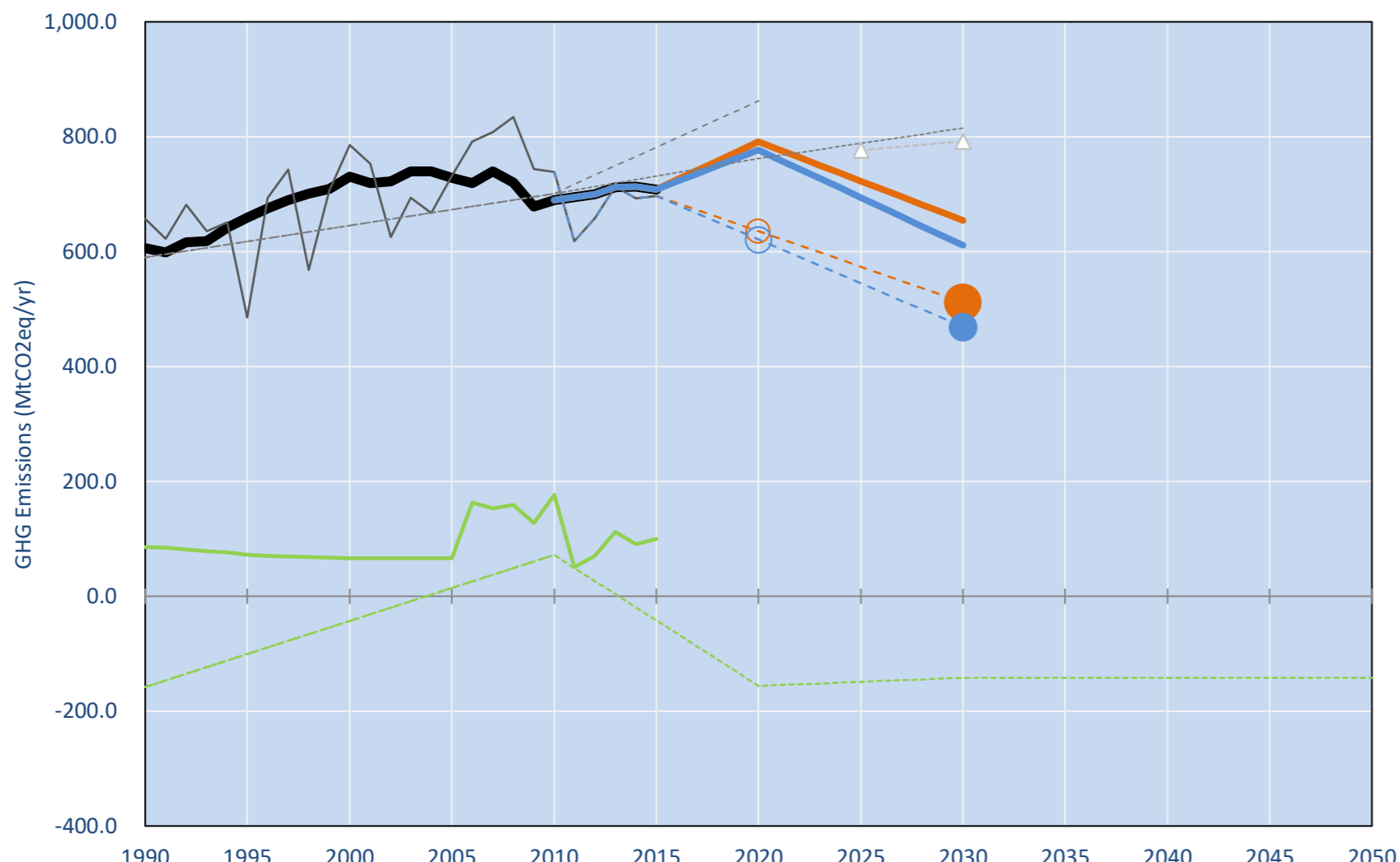
Per-Capita Emissions in 2030 rel. 2015 (excl. LULUCF): **-21%**

NDC 2025	NDC 2030	2015 World Rank	2025 World Rank	2030 World Rank
	-30% -30% rel.2005	1.5% #12	1.4% #14	1.2% #14
Share of World Emissions excl. LULUCF (Rank):		19.7t #9	18.1t #11	15.7t #15
Per-Capita Emissions (tCO2eq/cap)				

NDC: Canada intends to achieve an economy-wide target to reduce its greenhouse gas emissions by 30% below 2005 levels by 2030. (GWP AR4)

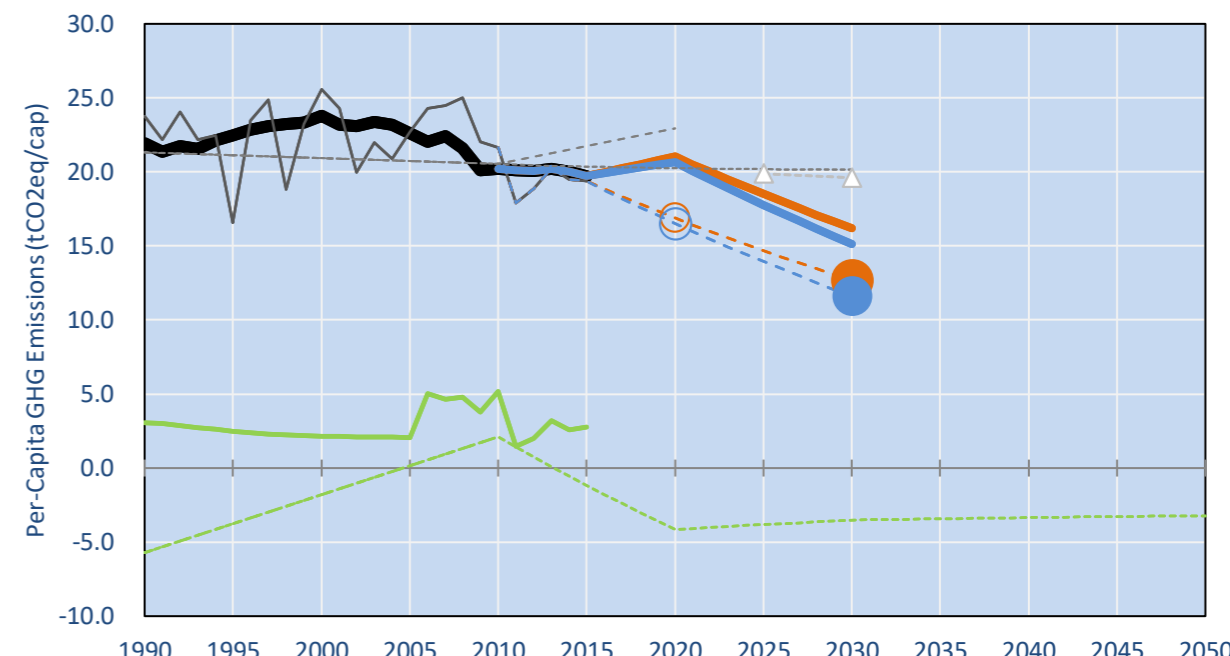
INDC Submitted: 15/05/2015

## GHG Emissions

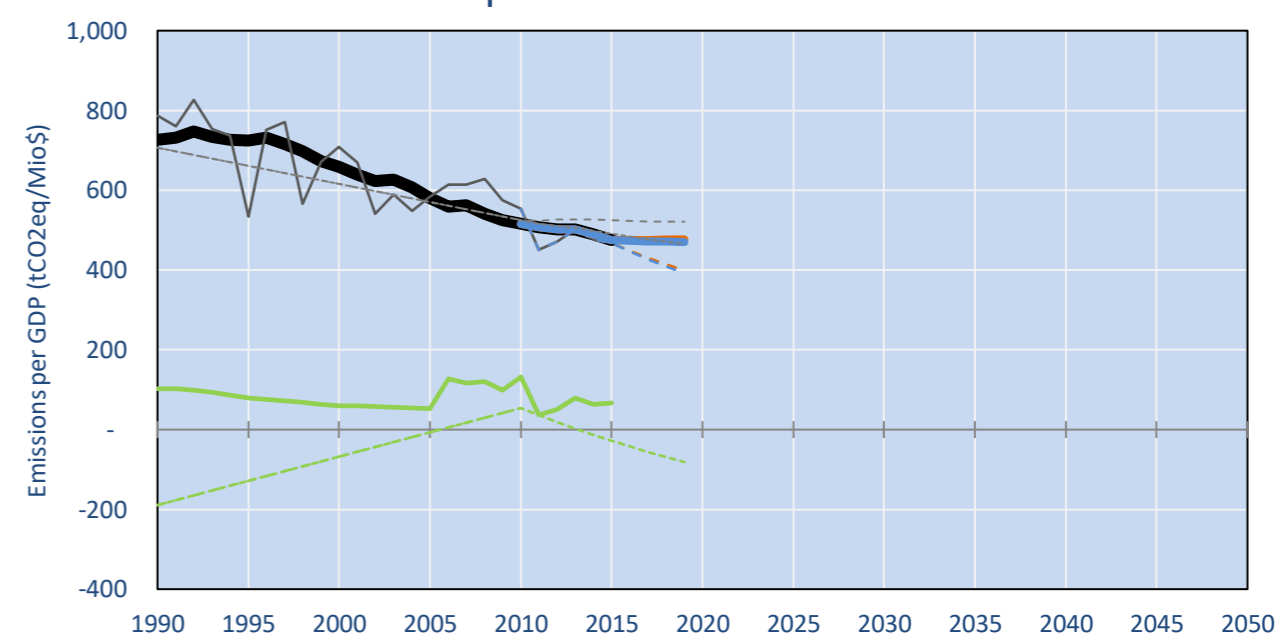


- Reference Total GHG excl. LULUCF
- Historical Covered Emissions, incl. LULUCF, if covered.
- LOW INDC Covered Emissions, incl. LULUCF if covered
- LOW INDC Covered + Non-Covered Emissions, excl. LULUCF
- HIGH INDC Covered Emissions, incl. LULUCF
- HIGH INDC Covered + Non-Covered Emissions, excl. LULUCF
- HIGH Cancun Pledges
- WM Total excl. LULUCF Projections
- NM LULUCF Projections
- Not-covered GHG excl. LULUCF (Region Projection)
- Reference LULUCF Emissions
- LOW INDC Levels
- LOW INDC Covered Emissions, excl. LULUCF
- HIGH INDC Levels
- HIGH INDC Covered Emissions, excl. LULUCF
- LOW Cancun Pledges
- NM Total excl. LULUCF Projections
- WM LULUCF Projections
- Regional/Gas-specific BAU

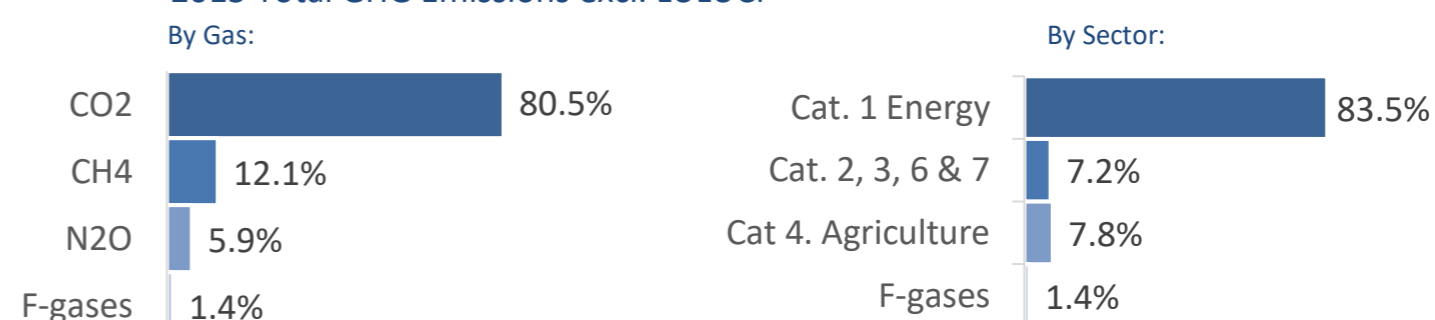
## Per-Capita Emissions



## GHG Emissions per GDP



## 2015 Total GHG Emissions excl. LULUCF



## GHG Emissions

	1990	2000	2005	2010	2015	2020		2025		2030	
						low	high	low	high	low	high
(MtCO2eq/yr in GWP SAR)											
Assumed LULUCF Accounting Credits (-)/Debits (+)						-	-	28			
NDC covered LULUCF Emissions		55	3	50	11	156	156	149	149	142	142
NDC covered Emissions excl. LULUCF	606	730	729	689	708	791	777	723	694	654	611
Total GHG excl. LULUCF	606	730	729	689	708	791	777	723	694	654	611
Total GHG incl. LULUCF	691	797	795	866	808	635	621	574	545	512	469

## Relative GHG Emissions

	1990	2000	2005	2010	2015	2020		2025		2030	
						low	high	low	high	low	high
Total excl. LULUCF											
Relative 1990	100%	120%	120%	114%	117%	131%	128%	119%	114%	108%	101%
Relative 2000	83%	100%	100%	94%	97%	108%	106%	99%	95%	90%	84%
Relative 2005	83%	100%	100%	95%	97%	109%	107%	99%	95%	90%	84%
Relative 2010	88%	106%	106%	100%	103%	115%	113%	105%	101%	95%	89%
Relative 2015	86%	103%	103%	97%	100%	112%	110%	102%	98%	92%	86%

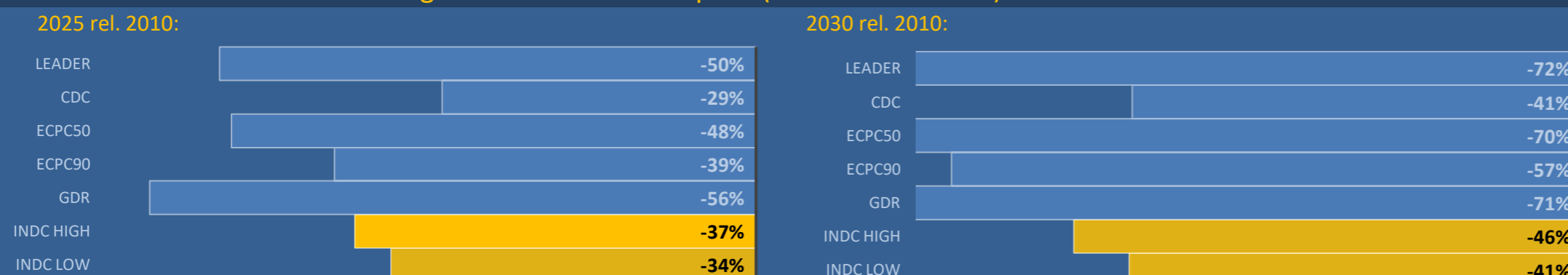
## Per-Capita Emissions

	1990	2000	2005	2010	2015	2020		2025		2030	
						low	high	low	high	low	high
Total excl. LULUCF											
Population (Mio)	28	31	32	34	36	38	38	39	39	40	40
Per-Capita Emissions (tCO2eq/cap)	21.9	23.8	22.6	20.2	19.7	21.0	20.7	18.5	17.8	16.2	15.1
Relative 1990	100%	109%	103%	92%	90%	96%	94%	84%	81%	74%	69%
Relative 2000	92%	100%	95%	85%	83%	88%	87%	78%	75%	68%	64%
Relative 2005	97%	105%	100%	89%	87%	93%	91%	82%	79%	72%	67%
Relative 2010	108%	118%	112%	100%	98%	104%	102%	92%	88%	80%	75%
Relative 2015	111%	121%	115%	102%	100%	107%	105%	94%	90%	82%	77%

## Data Sources:

Cat1\_CO2 PRIMAPHIST17  
 Cat2367\_CO2 PRIMAPHIST17  
 Cat4\_CO2 PRIMAPHIST17  
 Cat5\_CO2 PRIMAPHIST17  
 Cat1\_CH4 PRIMAPHIST17  
 Cat2367\_CH4 PRIMAPHIST17  
 Cat4\_CH4 PRIMAPHIST17  
 Cat5\_CH4 PRIMAPHIST17  
 Cat1\_N2O PRIMAPHIST17  
 Cat2367\_N2O PRIMAPHIST17  
 Cat4\_N2O PRIMAPHIST17  
 Cat5\_N2O PRIMAPHIST17  
 Cat0\_HFCs PRIMAPHIST17  
 Cat0\_PFCs PRIMAPHIST17  
 Cat0\_SF6 PRIMAPHIST17  
 Population UN 2015 Population Projections MEDIUM  
 GDP IMF WEO 2015, PPP adjusted GDP, constant 2009 prices...  
 IPCC WG3 Scenario IMAGE | AMPERE2-550-FullTech-HST  
 PRIMAPHIST16 description: www.pik-potsdam.de/primap-live/primap-hist/  
 Gratefully acknowledged in particular: PRIMAP, CAIT, CDIAC, EDGAR, IPCC, IEA, UNEP Gap Team, AMPERE Team and comments on earlier versions, in particular by Giacomo Grassi. Errors and misjudgements are our own. Malte Meinshausen & Ryan Alexander; The "Fiji COP23" Edition was enabled through support via the BMUB project UM14 41 4060  
 This Factsheet is available at www.climatecollege.unimelb.edu.au/indc-factsheets. Check out as well: www.climateactiontracker.org, www.mitigation-contributions.org, cait.wri.org, infographics.pbl.nl/indc, live.primap.org, www.unep.org/climatechange/pledgepipeline, and our twitter feed @ClimateCollege  
 climatecollege.unimelb.edu.au  
 AUSTRALIAN-GERMAN CLIMATE & ENERGY COLLEGE

## Various 'fair' contributions for a global 'least-cost' 2°C path (total incl. LULUCF):



## More info on www.mitigation-contributions.org

### "Fair" contributions for a global 'least-cost' 2°C track:

- LEADER Leader
- CDC Common-but-diff. per-cap. convergence
- ECPC50 Eq. cum. Per-capita since 1950
- ECPC90 Eq. cum. Per-capita since 1990
- GDR Greenhouse Development Rights
- #N/A No available data