

Canada

Per-Capita Emissions in 2030 rel. 2015 (excl. LULUCF): **-20%**

NDC 2025

NDC 2030

2015 World Rank

2025 World Rank

2030 World Rank

Share of World Emissions excl. LULUCF (Rank):

1.5% #11

1.3% #13

1.2% #14

Per-Capita Emissions (tCO₂eq/cap)

20.1t #9

18.5t #11

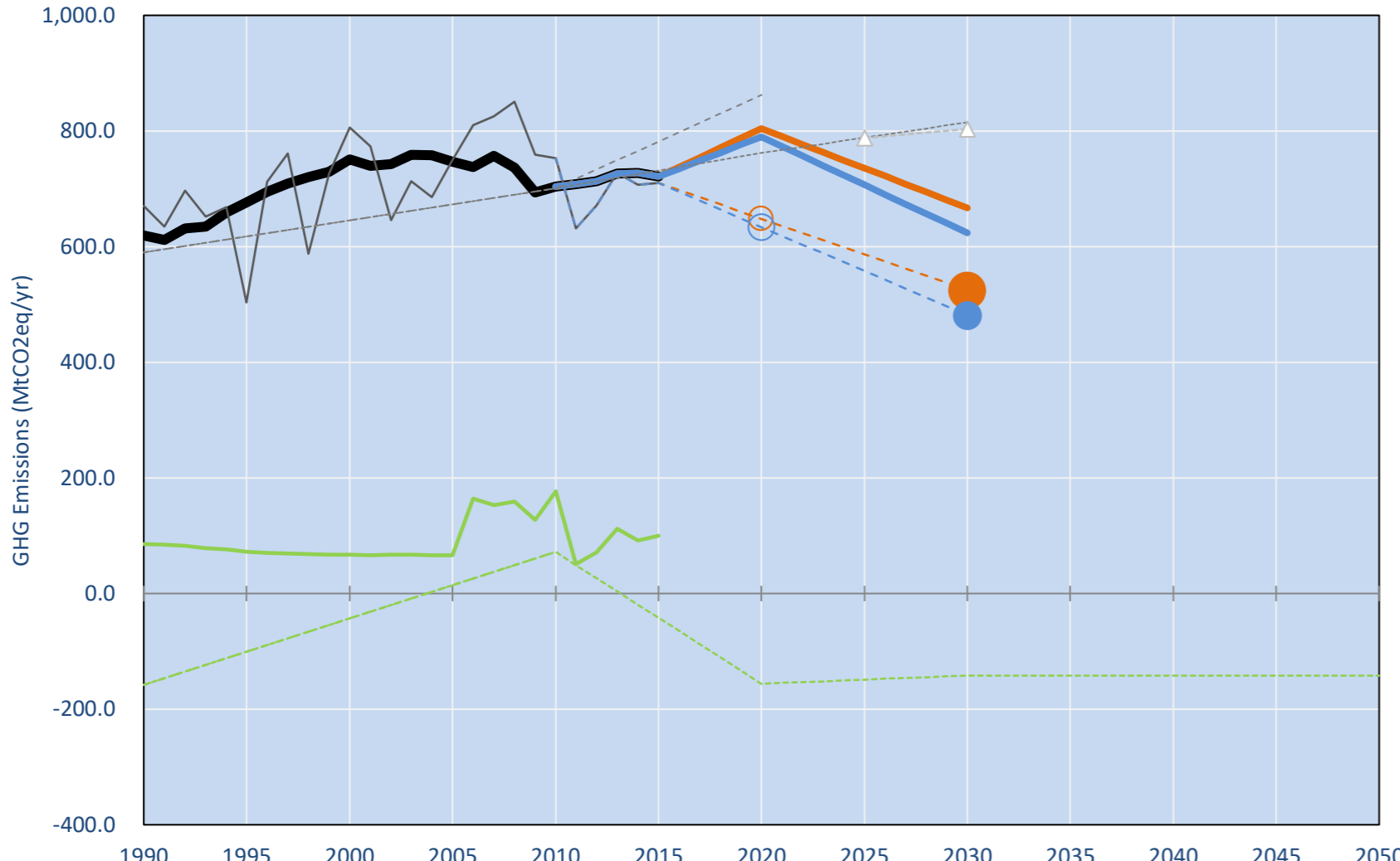
16t #14

Paris Agreement ratified on: 05/10/2016

NDC: Canada intends to achieve an economy-wide target to reduce its greenhouse gas emissions by 30% below 2005 levels by 2030. (GWP AR4)

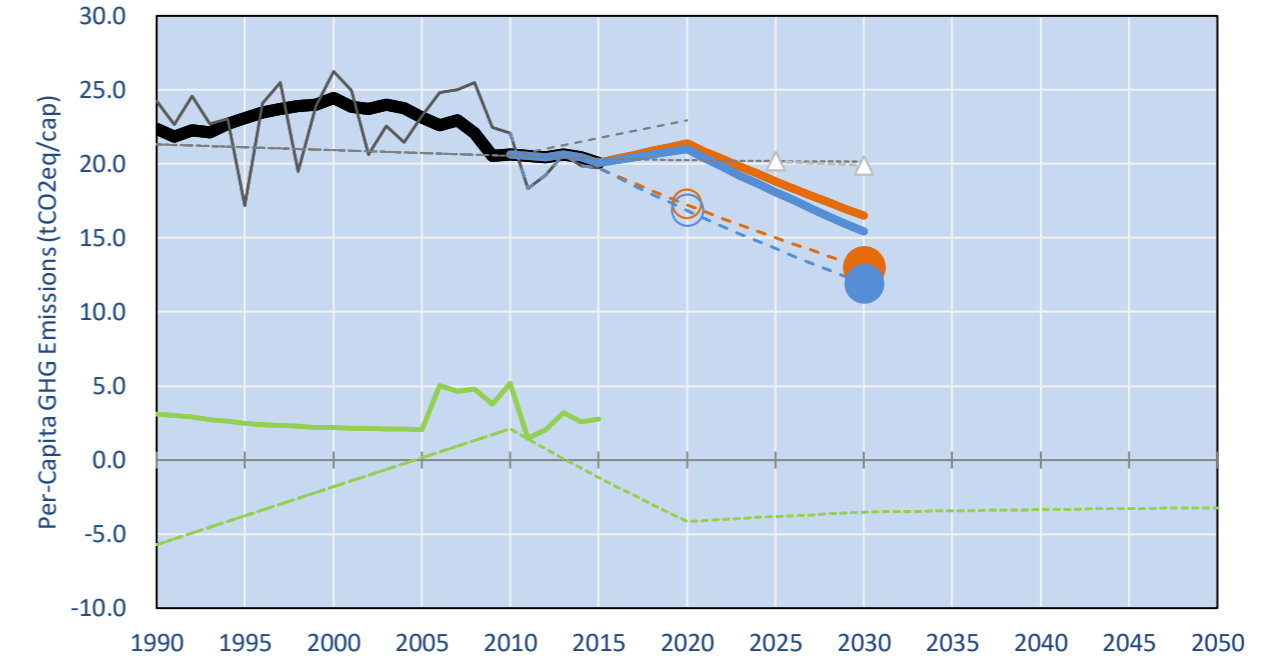
INDC Submitted: 15/05/2015

GHG Emissions

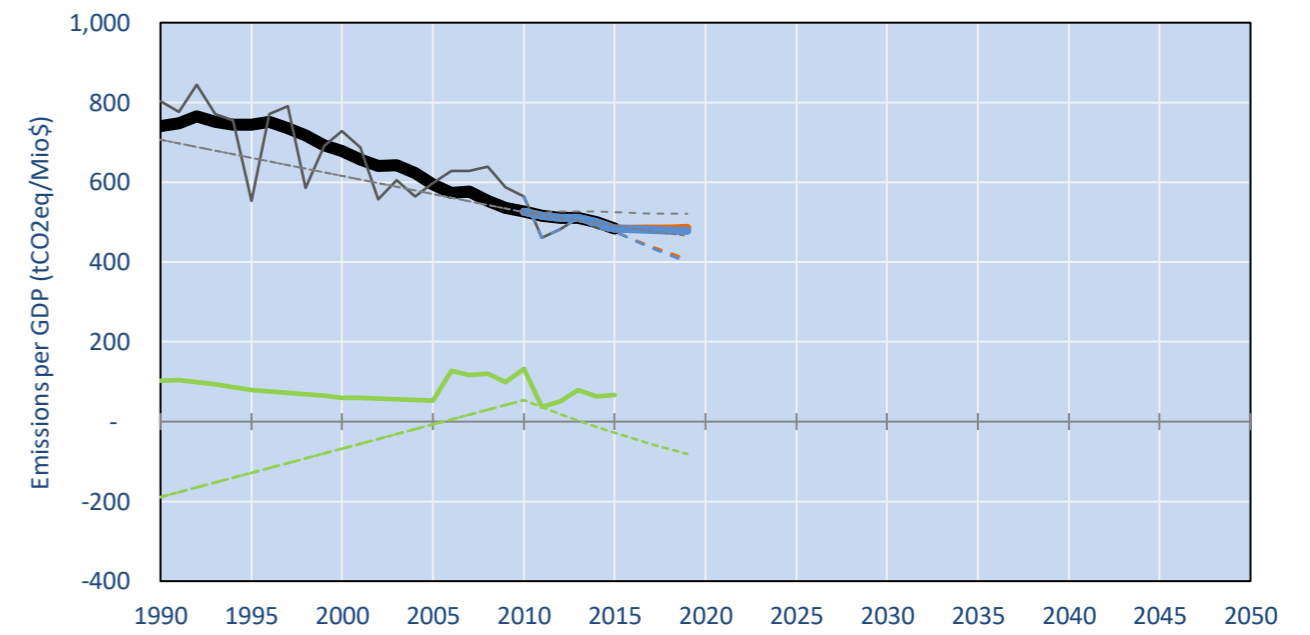


- Reference Total GHG excl. LULUCF
- Historical Covered Emissions, incl. LULUCF, if covered.
- LOW INDC Covered Emissions, incl. LULUCF if covered
- LOW INDC Covered + Non-Covered Emissions, excl. LULUCF
- HIGH INDC Covered Emissions, incl. LULUCF
- HIGH INDC Covered + Non-Covered Emissions, excl. LULUCF
- HIGH Cancun Pledges
- LOW Cancun Pledges
- NM Total excl. LULUCF Projections
- WM Total excl. LULUCF Projections
- NM LULUCF Projections
- WM LULUCF Projections
- Regional/Gas-specific BAU
- Not-covered GHG excl. LULUCF (Region Projection)
- Reference LULUCF Emissions
- LOW INDC Levels
- HIGH INDC Levels

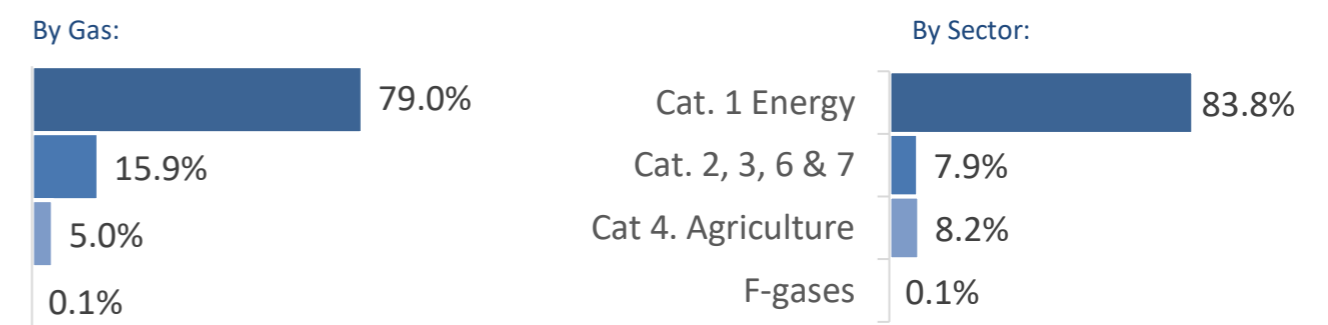
Per-Capita Emissions



GHG Emissions per GDP



2015 Total GHG Emissions excl. LULUCF



GHG Emissions

	1990	2000	2005	2010	2015	2020		2025		2030	
						low	high	low	high	low	high
(MtCO ₂ eq/yr in GWP AR5)											
Assumed LULUCF Accounting Credits (-)/Debits (+)						-	-	28			
NDC covered LULUCF Emissions		51	55	3	50	-	11	-	156	-	156
NDC covered Emissions excl. LULUCF	619	751	747	704	721	804	790	736	707	667	624
Total GHG excl. LULUCF	619	751	747	704	721	804	790	736	707	667	624
Total GHG incl. LULUCF	704	818	813	880	821	648	634	587	558	525	482

Relative GHG Emissions

	1990	2000	2005	2010	2015	2020		2025		2030	
						low	high	low	high	low	high
Total excl. LULUCF											
Relative 1990	100%	121%	121%	114%	117%	130%	128%	119%	114%	108%	101%
Relative 2000	82%	100%	99%	94%	96%	107%	105%	98%	94%	89%	83%
Relative 2005	83%	101%	100%	94%	97%	108%	106%	98%	95%	89%	83%
Relative 2010	88%	107%	106%	100%	103%	114%	112%	105%	100%	95%	89%
Relative 2015	86%	104%	104%	98%	100%	112%	110%	102%	98%	92%	86%

Per-Capita Emissions

	1990	2000	2005	2010	2015	2020		2025		2030	
						low	high	low	high	low	high
Total excl. LULUCF											
Population (Mio)	28	31	32	34	36	38	38	39	39	40	40
Per-Capita Emissions (tCO ₂ eq/cap)	22.4	24.5	23.2	20.6	20.1	21.4	21.0	18.8	18.1	16.5	15.4
Relative 1990	100%	109%	104%	92%	90%	96%	94%	84%	81%	74%	69%
Relative 2000	91%	100%	95%	84%	82%	87%	86%	77%	74%	68%	63%
Relative 2005	97%	106%	100%	89%	87%	92%	91%	81%	78%	71%	67%
Relative 2010	109%	119%	112%	100%	97%	104%	102%	91%	88%	80%	75%
Relative 2015	111%	122%	115%	103%	100%	107%	105%	94%	90%	82%	77%

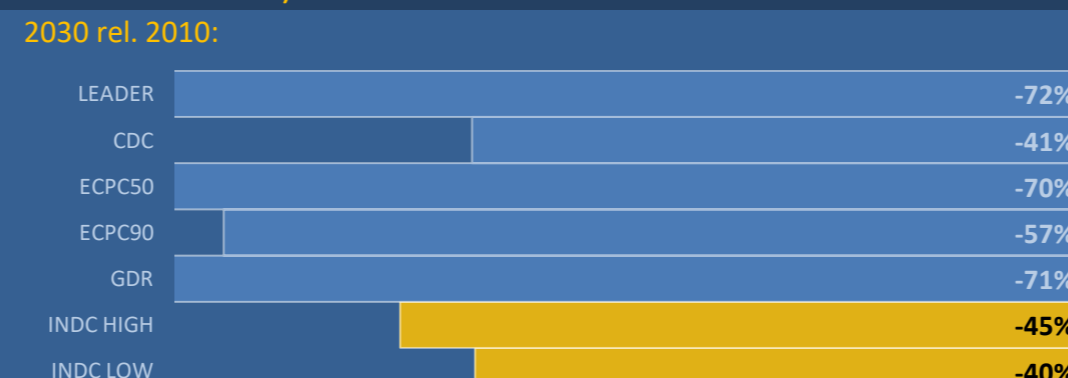
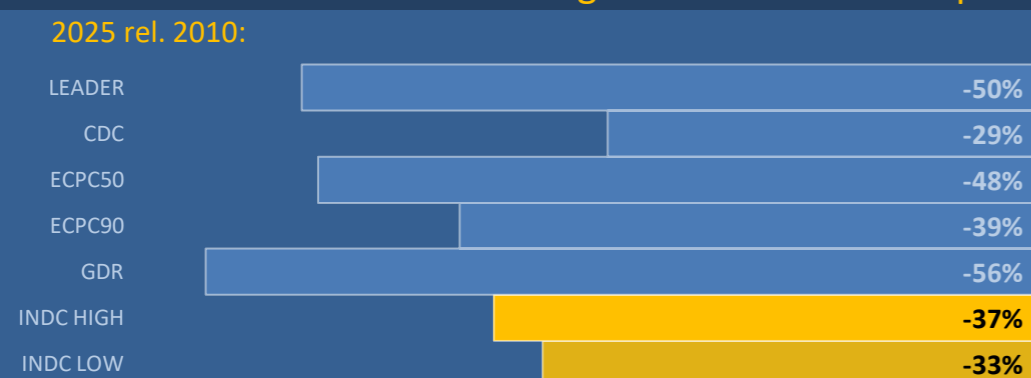
Data Sources:

Cat1_CO2	PRIMAPHIST17	Cat5A1_CO2	UNFCCC CRF + Nat. Comms.
Cat2367_CO2	PRIMAPHIST17	Cat5A2_CO2	UNFCCC CRF + Nat. Comms.
Cat4_CO2	PRIMAPHIST17	Cat5LtoNonFL_CO2	UNFCCC CRF + Nat. Comms.
Cat5_CO2	PRIMAPHIST17	Cat5GMCMWMM_C	UNFCCC CRF + Nat. Comms.
Cat1_CH4	PRIMAPHIST17	Cat5A1ForestFires	UNFCCC Cat5 + EDGAR(IPCC Database)
Cat2367_CH4	PRIMAPHIST17	Cat5A1HWP_CO2	UNFCCC CRF + Nat. Comms.
Cat4_CH4	PRIMAPHIST17	Cat5bisA_CO2	UNFCCC CRF + NATCOMM.
Cat5_CH4	PRIMAPHIST17	Cat5bisB_CO2	UNFCCC CRF + NATCOMM.
Cat1_N2O	PRIMAPHIST17	Cat5bisC_CO2	UNFCCC CRF + NATCOMM.
Cat2367_N2O	PRIMAPHIST17	Cat5bisD_CO2	UNFCCC CRF + NATCOMM.
Cat4_N2O	PRIMAPHIST17	Cat5bisE_CO2	UNFCCC CRF + NATCOMM.
Cat5_N2O	PRIMAPHIST17	PRO_WM_Cat5_G	UNFCCC Annex I Reports
Cat0_HFCs	PRIMAPHIST17	Metric	GWP AR5
Cat0_PFCs	PRIMAPHIST17		
Cat0_SF6	PRIMAPHIST17		
Population	UN 2015 Population Projections MEDIUM		
GDP	IMF WEO 2015, PPP adjusted GDP, constant 2009 prices...		
IPCC WG3 Scenario	IMAGE AMPERE2-550-FullTech-HST		
PRIMAPHIST16 description:	www.pik-potsdam.de/primap-live/primap-hist/		
Gratefully acknowledged in particular:	PRIMAP, CAIT, CDIAC, EDGAR, IPCC, IEA, UNEP Gap Team, AMPERE Team and comments on earlier versions, in particular by Giacomo Grassi. Errors and misjudgements are our own. Malte Meinshausen & Ryan Alexander; The "Fiji COP23" Edition was enabled through support via the BMUB project UM14 41 4060		
This Factsheet is available at	www.climatecollege.unimelb.edu.au/indc-factsheets. Check out as well: www.climateactiontracker.org, www.mitigation-contributions.org, cait.wri.org, infographics.pbl.nl/indc, live.primap.org, www.unep.org/climatechange/pledgepipeline, and our twitter feed @ClimateCollege		

climatecollege.unimelb.edu.au



Various 'fair' contributions for a global 'least-cost' 2°C path (total incl. LULUCF):



More info on www.mitigation-contributions.org

"Fair" contributions for a global 'least-cost' 2°C track:

- LEADER Leader
- CDC Common-but-diff. per-cap. convergence
- ECPC50 Eq. cum. Per-capita since 1950
- ECPC90 Eq. cum. Per-capita since 1990
- GDR Greenhouse Development Rights
- #N/A No available data