

Cambodia

Per-Capita Emissions in 2030 rel. 2015 (excl. LULUCF): **-31%**

NDC 2025

NDC 2030

2015 World Rank

2025 World Rank

2030 World Rank

Share of World Emissions excl. LULUCF (Rank):

0.1% #96

0.1% #113

0.1% #113

Per-Capita Emissions (tCO2eq/cap)

2.2t #141

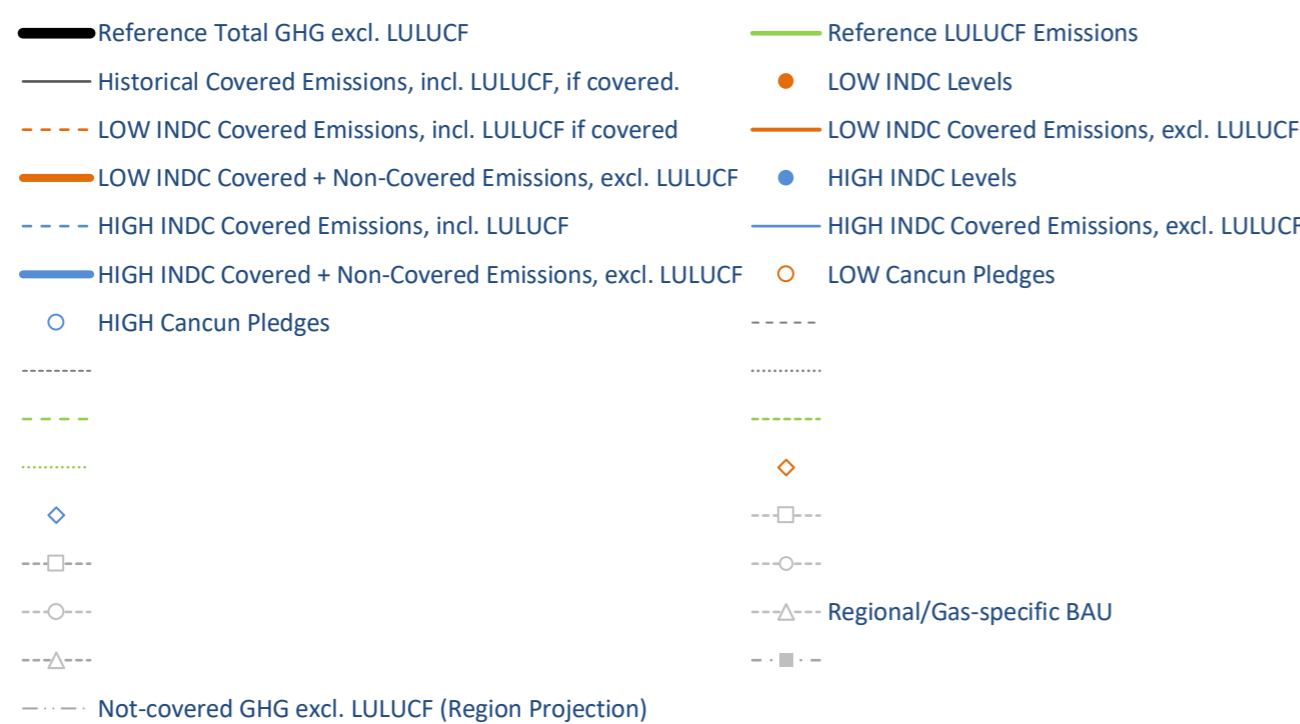
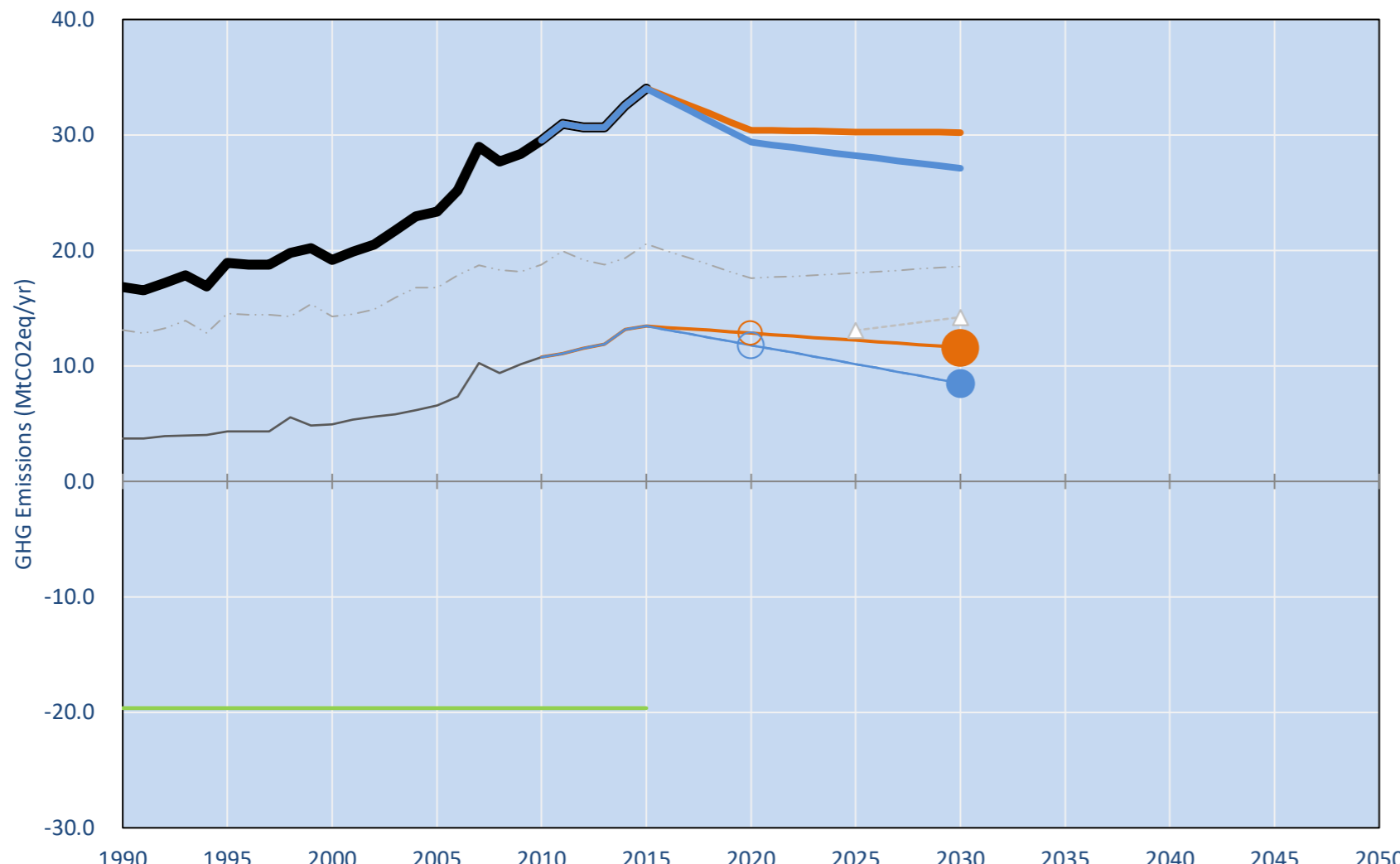
1.6t #164

1.5t #164

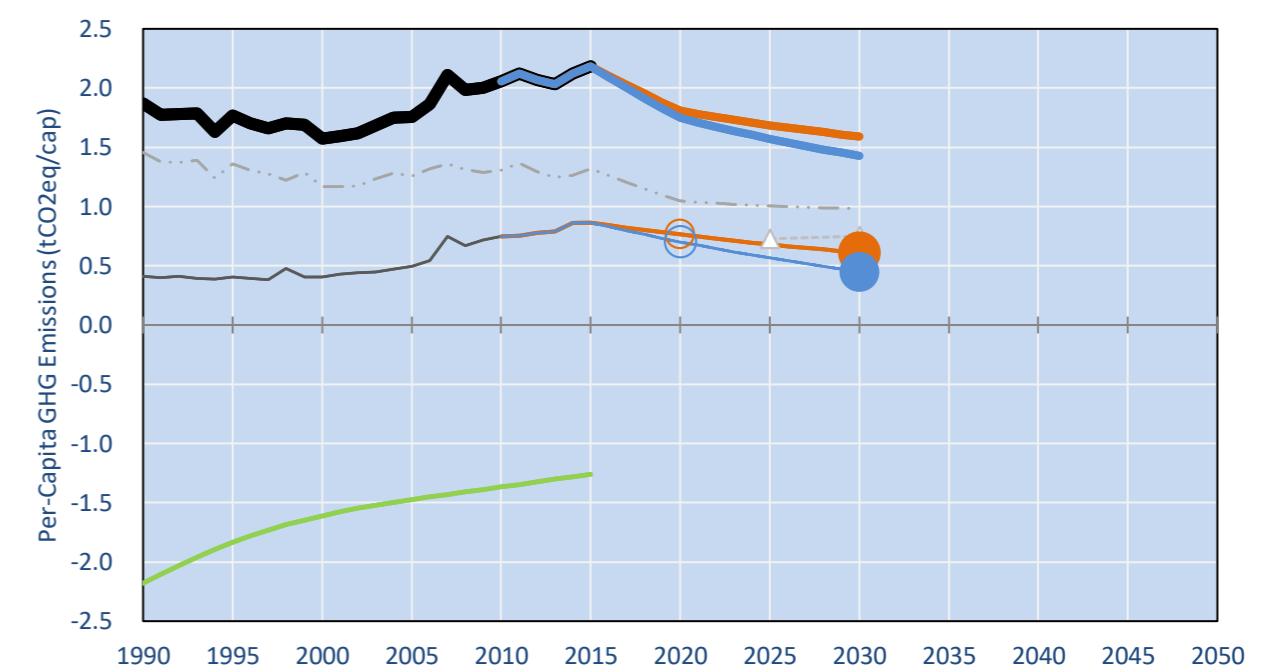
NDC: Implementing mitigation actions in accordance with sustainable development needs across sectors. (GWP SAR)

INDC Submitted: 30/09/2015

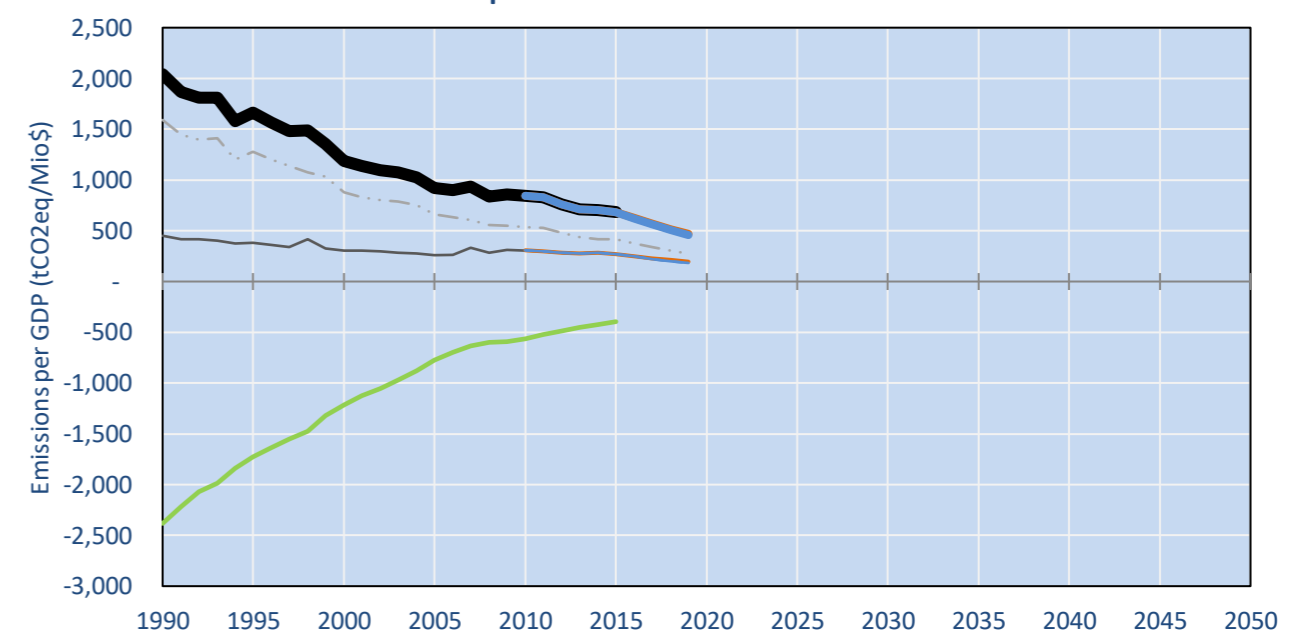
GHG Emissions



Per-Capita Emissions

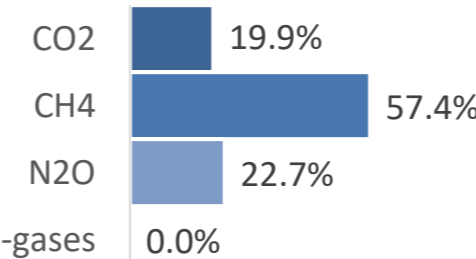


GHG Emissions per GDP

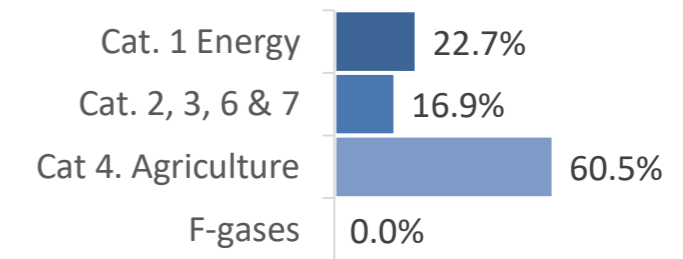


2015 Total GHG Emissions excl. LULUCF

By Gas:



By Sector:



GHG Emissions

	1990	2000	2005	2010	2015	2020		2025		2030	
(MtCO2eq/yr in GWP SAR)						low	high	low	high	low	high
Assumed LULUCF Accounting Credits (-)/Debits (+)	-	-	-	-	-	-	-	-	-	-	-
NDC covered LULUCF Emissions	-	-	-	-	-	-	-	-	-	-	-
NDC covered Emissions excl. LULUCF	4	5	7	11	13	13	12	12	10	12	9
Total GHG excl. LULUCF	17	19	23	30	34	30	29	30	28	30	27
Total GHG incl. LULUCF	-	3	0	4	10	14	11	10	9	11	7

Relative GHG Emissions

	1990	2000	2005	2010	2015	2020		2025		2030	
Total excl. LULUCF						low	high	low	high	low	high
Relative 1990	100%	114%	139%	175%	202%	181%	175%	180%	168%	180%	161%
Relative 2000	88%	100%	122%	154%	177%	159%	153%	158%	147%	157%	141%
Relative 2005	72%	82%	100%	126%	146%	130%	126%	130%	121%	129%	116%
Relative 2010	57%	65%	79%	100%	115%	103%	99%	102%	95%	102%	92%
Relative 2015	49%	56%	69%	87%	100%	89%	86%	89%	83%	89%	80%

Per-Capita Emissions

	1990	2000	2005	2010	2015	2020		2025		2030	
Total excl. LULUCF						low	high	low	high	low	high
Population (Mio)	9	12	13	14	16	17	17	18	18	19	19
Per-Capita Emissions (tCO2eq/cap)	1.9	1.6	1.8	2.1	2.2	1.8	1.7	1.7	1.6	1.6	1.4
Relative 1990	100%	84%	94%	110%	117%	97%	94%	90%	84%	85%	76%
Relative 2000	119%	100%	111%	131%	139%	115%	111%	107%	100%	101%	91%
Relative 2005	107%	90%	100%	117%	125%	103%	100%	96%	90%	91%	81%
Relative 2010	91%	77%	85%	100%	106%	88%	85%	82%	76%	77%	69%
Relative 2015	86%	72%	80%	94%	100%	83%	80%	77%	72%	73%	65%

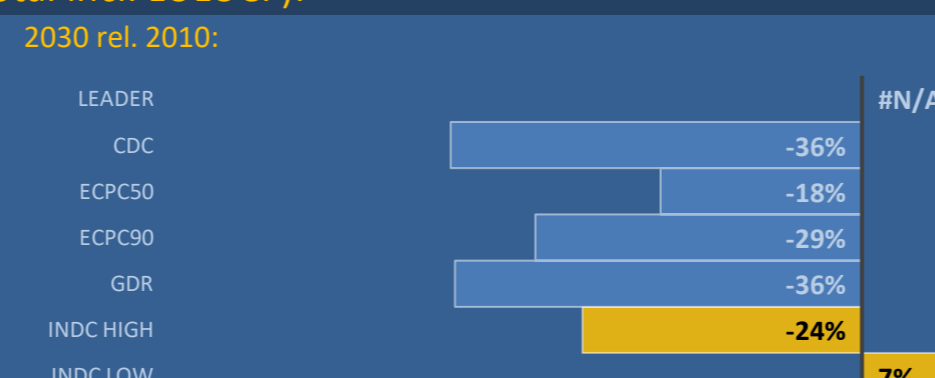
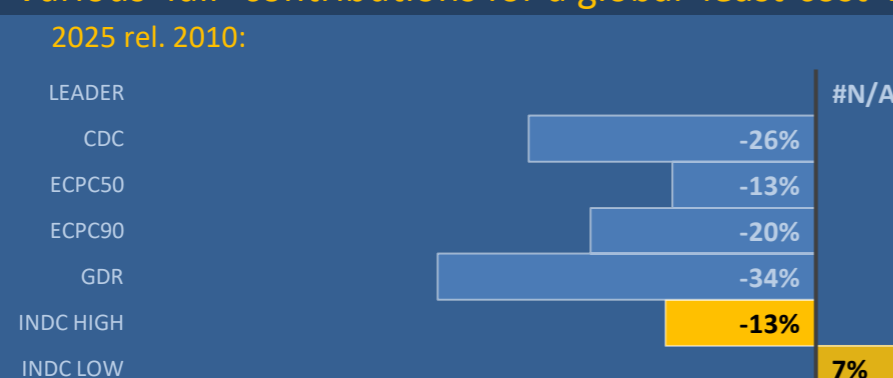
Data Sources:

Cat1_CO2	PRIMAPHIST17	Cat5A1_CO2	UNFCCC CRF + Nat. Comms.
Cat2367_CO2	PRIMAPHIST17	Cat5A2_CO2	UNFCCC CRF + Nat. Comms.
Cat4_CO2	PRIMAPHIST17	Cat5LtoNonFL_CO2	UNFCCC CRF + Nat. Comms.
Cat5_CO2	PRIMAPHIST17	Cat5GCMCMWM_C	UNFCCC CRF
Cat1_CH4	PRIMAPHIST17	Cat5A1ForestFires	UNFCCC Cat5 + EDGAR(IPCC Database)
Cat2367_CH4	PRIMAPHIST17	Cat5A1HWP_CO2	UNFCCC CRF + Nat. Comms.
Cat4_CH4	PRIMAPHIST17	Cat5bisA_CO2	UNFCCC CRF + NATCOMM.
Cat5_CH4	PRIMAPHIST17	Cat5bisB_CO2	UNFCCC CRF + NATCOMM.
Cat1_N2O	PRIMAPHIST17	Cat5bisC_CO2	UNFCCC CRF + NATCOMM.
Cat2367_N2O	PRIMAPHIST17	Cat5bisD_CO2	UNFCCC CRF + NATCOMM.
Cat4_N2O	PRIMAPHIST17	Cat5bisE_CO2	UNFCCC CRF + NATCOMM.
Cat5_N2O	PRIMAPHIST17	PRO_WM_Cat5_G	UNFCCC Annex I Reports
Cat0_HFCs	PRIMAPHIST17	Metric	GWP SAR
Cat0_PFCs	PRIMAPHIST17		
Cat0_SF6	PRIMAPHIST17		
Population	UN 2015 Population Projections MEDIUM		
GDP	IMF WEO 2015, PPP adjusted GDP, constant 2009 prices...		
	IPCC WG3 Scenario IMAGE AMPERE2-550-FullTech-HST		
	PRIMAPHIST16 description: www.pik-potsdam.de/primap-live/primap-hist/		
	Gratefully acknowledged in particular: PRIMAP, CAIT, CDIAC, EDGAR, IPCC, IEA, UNEP Gap Team, AMPERE Team and comments on earlier versions, in particular by Giacomo Grassi. Errors and misjudgements are our own. Malte Meinshausen & Ryan Alexander; The "Fiji COP23" Edition was enabled through support via the BMUB project UM14 41 4060		
	This Factsheet is available at www.climatecollege.unimelb.edu.au/indc-factsheets. Check out as well: www.climateactiontracker.org, www.mitigation-contributions.org, cait.wri.org, infographics.pbl.nl/indc, live.primap.org, www.unep.org/climatechange/pledgepipeline, and our twitter feed @ClimateCollege		

climatecollege.unimelb.edu.au



Various 'fair' contributions for a global 'least-cost' 2°C path (total incl. LULUCF):



More info on www.mitigation-contributions.org

Shown fair contributions only indicative
"Fair" contributions for a global 'least-cost' 2°C track:
LEADER Leader
CDC Common-but-diff. per-cap. convergence
ECPC50 Eq. cum. Per-capita since 1950
ECPC90 Eq. cum. Per-capita since 1990
GDR Greenhouse Development Rights
#N/A No available data