



Paris Agreement ratified on: 21/09/2017

Cabo Verde

Per-Capita Emissions in 2030 rel. 2015 (excl. LULUCF):



+47%

NDC 2025

NDC 2030

2015 World Rank

2025 World Rank

2030 World Rank

Share of World Emissions excl. LULUCF (Rank):

0.0% #173

0.0% #172

0.0% #173

Per-Capita Emissions (tCO₂eq/cap)

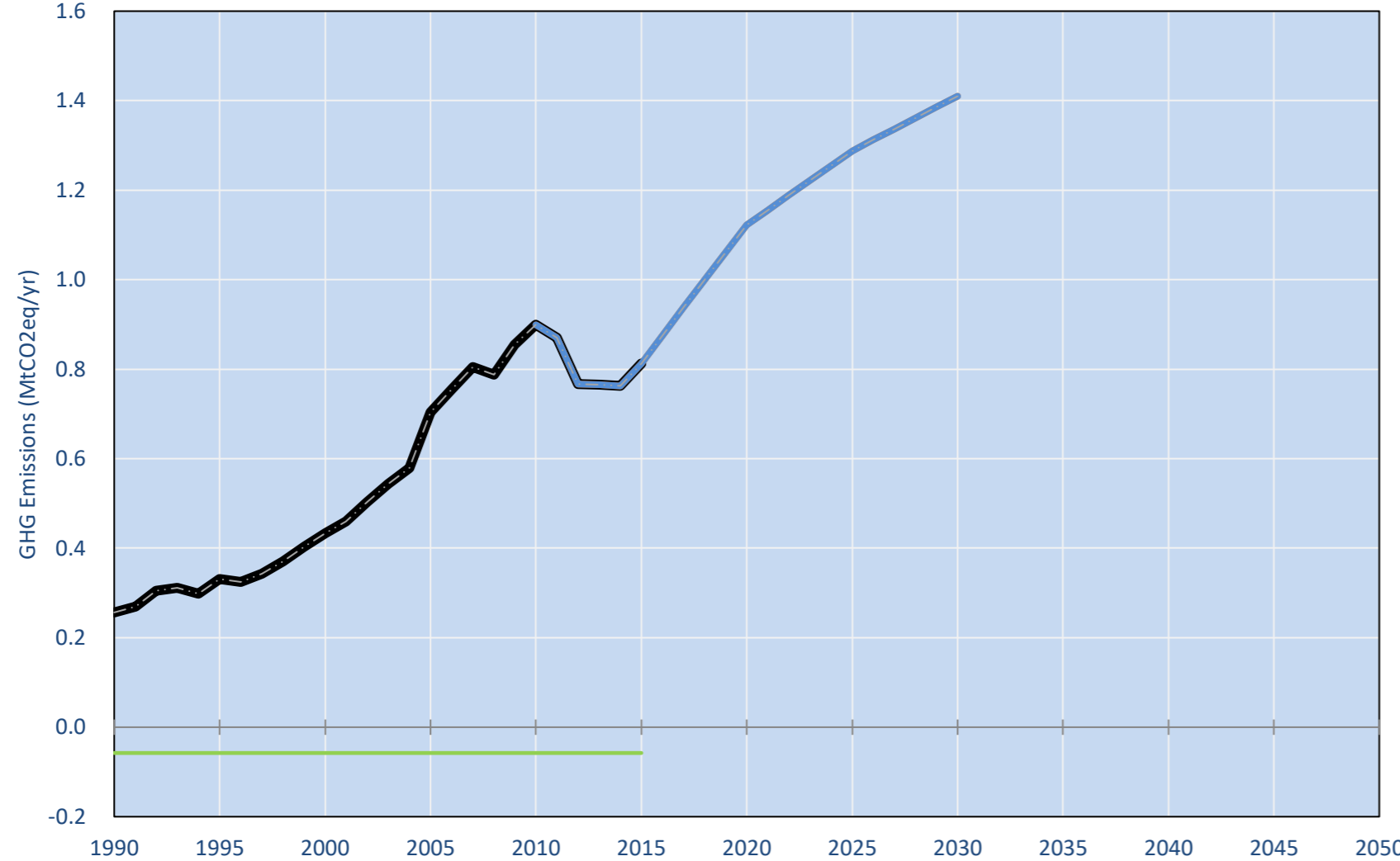
1.6t #166

2.2t #151

2.3t #145

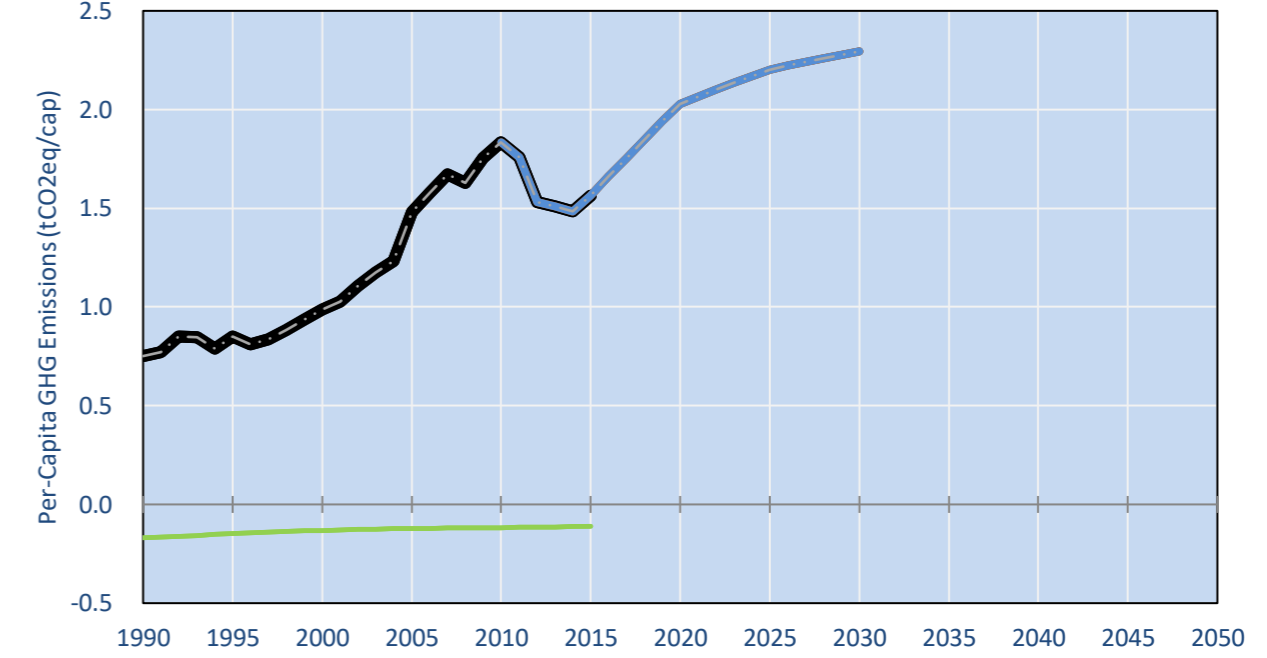
NDC Submitted: 30/09/2015

GHG Emissions

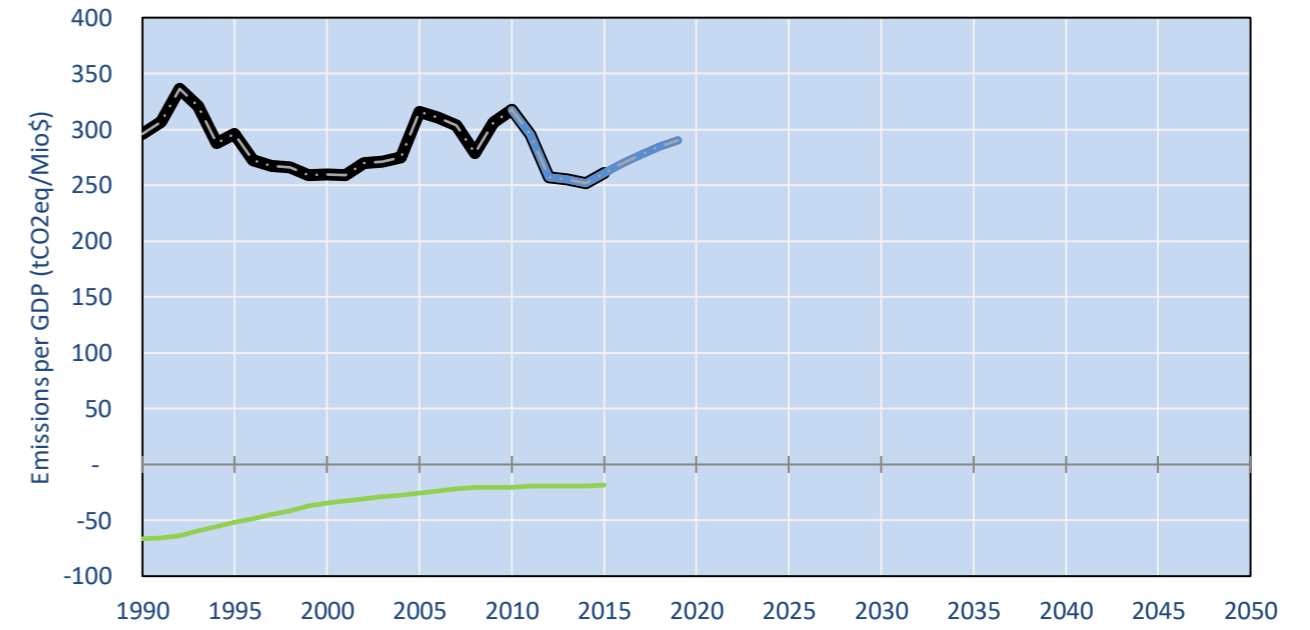


- Reference Total GHG excl. LULUCF
- Historical Covered Emissions, incl. LULUCF, if covered.
- - - LOW INDC Covered Emissions, incl. LULUCF if covered
- LOW INDC Covered + Non-Covered Emissions, excl. LULUCF
- - - HIGH INDC Covered Emissions, incl. LULUCF
- HIGH INDC Covered + Non-Covered Emissions, excl. LULUCF
- HIGH Cancun Pledges
- Not-covered GHG excl. LULUCF (Region Projection)
- Reference LULUCF Emissions
- LOW INDC Levels
- LOW INDC Covered Emissions, excl. LULUCF
- HIGH INDC Levels
- HIGH INDC Covered Emissions, excl. LULUCF
- LOW Cancun Pledges

Per-Capita Emissions



GHG Emissions per GDP



2015 Total GHG Emissions excl. LULUCF

By Gas:

CO ₂	62.9%
CH ₄	27.0%
N ₂ O	10.0%
F-gases	0.0%

By Sector:

Cat. 1 Energy	63.5%
Cat. 2, 3, 6 & 7	17.8%
Cat 4. Agriculture	18.8%
F-gases	0.0%

GHG Emissions

	1990	2000	2005	2010	2015	2020		2025		2030	
(MtCO ₂ eq/yr in GWP AR5)						low	high	low	high	low	high
Assumed LULUCF Accounting Credits (-)/Debits (+)	-	-	-	-	-	-	-	-	-	-	-
NDC covered LULUCF Emissions	-	-	-	-	-	-	-	-	-	-	-
NDC covered Emissions excl. LULUCF	-	-	-	-	-	-	-	-	-	-	-
Total GHG excl. LULUCF	0	0	1	1	1	1	1	1	1	1	1
Total GHG incl. LULUCF	0	0	1	1	1	1	1	1	1	1	1

Relative GHG Emissions

	1990	2000	2005	2010	2015	2020		2025		2030	
Total excl. LULUCF						low	high	low	high	low	high
Relative 1990	100%	169%	274%	351%	317%	438%	438%	502%	502%	550%	550%
Relative 2000	59%	100%	162%	207%	187%	259%	259%	297%	297%	325%	325%
Relative 2005	36%	62%	100%	128%	116%	160%	160%	183%	183%	201%	201%
Relative 2010	29%	48%	78%	100%	90%	125%	125%	143%	143%	157%	157%
Relative 2015	32%	53%	86%	111%	100%	138%	138%	158%	158%	173%	173%

Per-Capita Emissions

	1990	2000	2005	2010	2015	2020		2025		2030	
Total excl. LULUCF						low	high	low	high	low	high
Population (Mio)	0	0	0	0	1	1	1	1	1	1	1
Per-Capita Emissions (tCO ₂ eq/cap)	0.8	1.0	1.5	1.8	1.6	2.0	2.0	2.2	2.2	2.3	2.3
Relative 1990	100%	132%	197%	244%	208%	270%	270%	293%	293%	305%	305%
Relative 2000	76%	100%	150%	186%	158%	205%	205%	223%	223%	232%	232%
Relative 2005	51%	67%	100%	124%	105%	137%	137%	149%	149%	155%	155%
Relative 2010	41%	54%	81%	100%	85%	111%	111%	120%	120%	125%	125%
Relative 2015	48%	63%	95%	117%	100%	130%	130%	141%	141%	147%	147%

Data Sources:

Cat1_CO2	PRIMAPHIST17	Cat5A1_CO2	UNFCCC CRF + Nat. Comms.
Cat2367_CO2	PRIMAPHIST17	Cat5A2_CO2	UNFCCC CRF + Nat. Comms.
Cat4_CO2	PRIMAPHIST17	Cat5LtoNonFL_CO2	UNFCCC CRF + Nat. Comms.
Cat5_CO2	PRIMAPHIST17	Cat5GCMWMM_C	UNFCCC CRF
Cat1_CH4	PRIMAPHIST17	Cat5A1ForestFires	UNFCCC Cat5 + EDGAR(IPCC Database)
Cat2367_CH4	PRIMAPHIST17	Cat5A1HWP_CO2	UNFCCC CRF + Nat. Comms.
Cat4_CH4	PRIMAPHIST17	Cat5bisA_CO2	UNFCCC CRF + NATCOMM.
Cat5_CH4	PRIMAPHIST17	Cat5bisB_CO2	UNFCCC CRF + NATCOMM.
Cat1_N2O	PRIMAPHIST17	Cat5bisC_CO2	UNFCCC CRF + NATCOMM.
Cat2367_N2O	PRIMAPHIST17	Cat5bisD_CO2	UNFCCC CRF + NATCOMM.
Cat4_N2O	PRIMAPHIST17	Cat5bisE_CO2	UNFCCC CRF + NATCOMM.
Cat5_N2O	PRIMAPHIST17	PRO_WM_Cat5_G	UNFCCC Annex I Reports
Cat0_HFCs	PRIMAPHIST17	Metric	GWP AR5
Cat0_PFCs	PRIMAPHIST17		
Cat0_SF6	PRIMAPHIST17		
Population	UN 2015 Population Projections MEDIUM		
GDP	IMF WEO 2015, PPP adjusted GDP, constant 2009 prices...		
	IPCC WG3 Scenario IMAGE AMPERE2-550-FullTech-HST		

PRIMAPHIST16 description: www.pik-potsdam.de/primap-live/primap-hist/
Gratefully acknowledged in particular: PRIMAP, CAIT, CDIAC, EDGAR, IPCC, IEA, UNEP GAP Team, AMPERE Team and comments on earlier versions, in particular by Giacomo Grassi. Errors and misjudgements are our own. Malte Meinshausen & Ryan Alexander; The "Fiji COP23" Edition was enabled through support via the BMUB project UM14 41 4060
This Factsheet is available at www.climatecollege.unimelb.edu.au/indc-factsheets. Check out as well: www.climateactiontracker.org, www.mitigation-contributions.org, cait.wri.org, infographics.pbl.nl/indc/, live.primap.org, www.unep.org/climatechange/pledgepipeline, and our twitter feed @ClimateCollege

climatecollege.unimelb.edu.au



Various 'fair' contributions for a global 'least-cost' 2°C path (total incl. LULUCF):

More info on www.mitigation-contributions.org

2025 rel. 2010:		2030 rel. 2010:		"Fair" contributions for a global 'least-cost' 2°C track:	
LEADER	#N/A	LEADER	#N/A	LEADER	Leader
CDC	#N/A	CDC	#N/A	CDC	Common-but-diff. per-cap. convergence
ECPC50	#N/A	ECPC50	#N/A	ECPC50	Eq. cum. Per-capita since 1950
ECPC90	#N/A	ECPC90	#N/A	ECPC90	Eq. cum. Per-capita since 1990
GDR	#N/A	GDR	#N/A	GDR	Greenhouse Development Rights
INDC HIGH	46%	INDC HIGH	61%	#N/A	No available data
INDC LOW	46%	INDC LOW	61%		