



Paris Agreement ratified on: 21/09/2017

Cabo Verde

Per-Capita Emissions in 2030 rel. 2015 (excl. LULUCF):



+48%

NDC 2025

NDC 2030

2015 World Rank

2025 World Rank

2030 World Rank

Share of World Emissions excl. LULUCF (Rank):

0.0% #173

0.0% #172

0.0% #173

Per-Capita Emissions (tCO₂eq/cap)

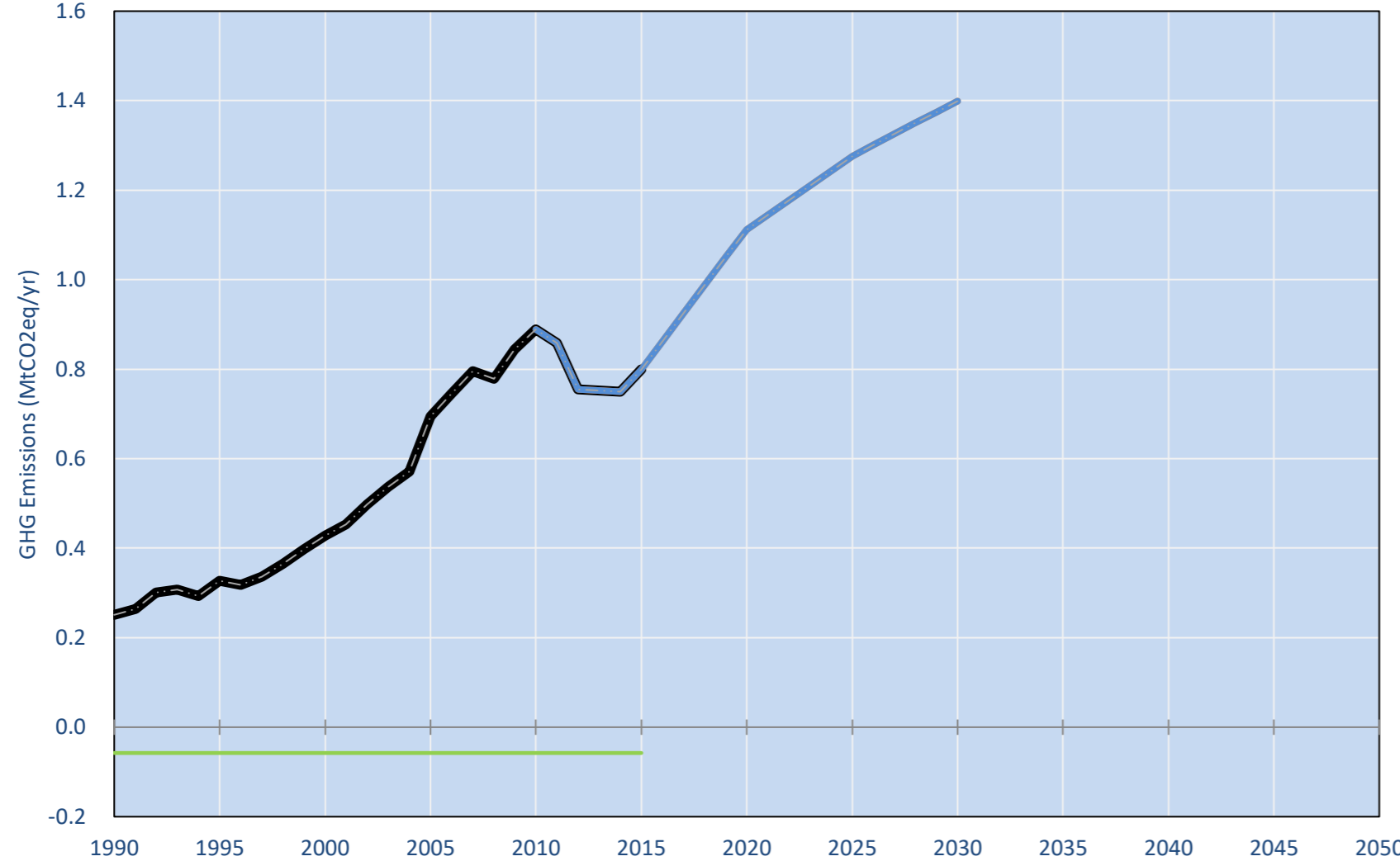
1.5t #164

2.2t #149

2.3t #143

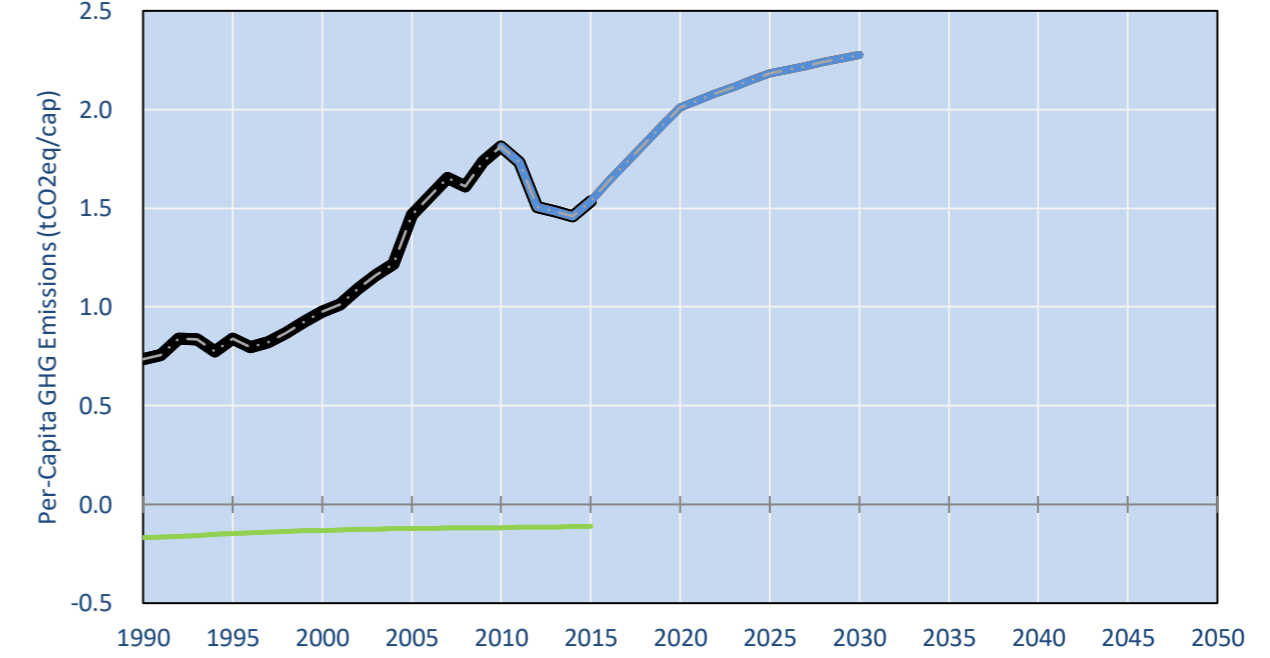
NDC Submitted: 30/09/2015

GHG Emissions

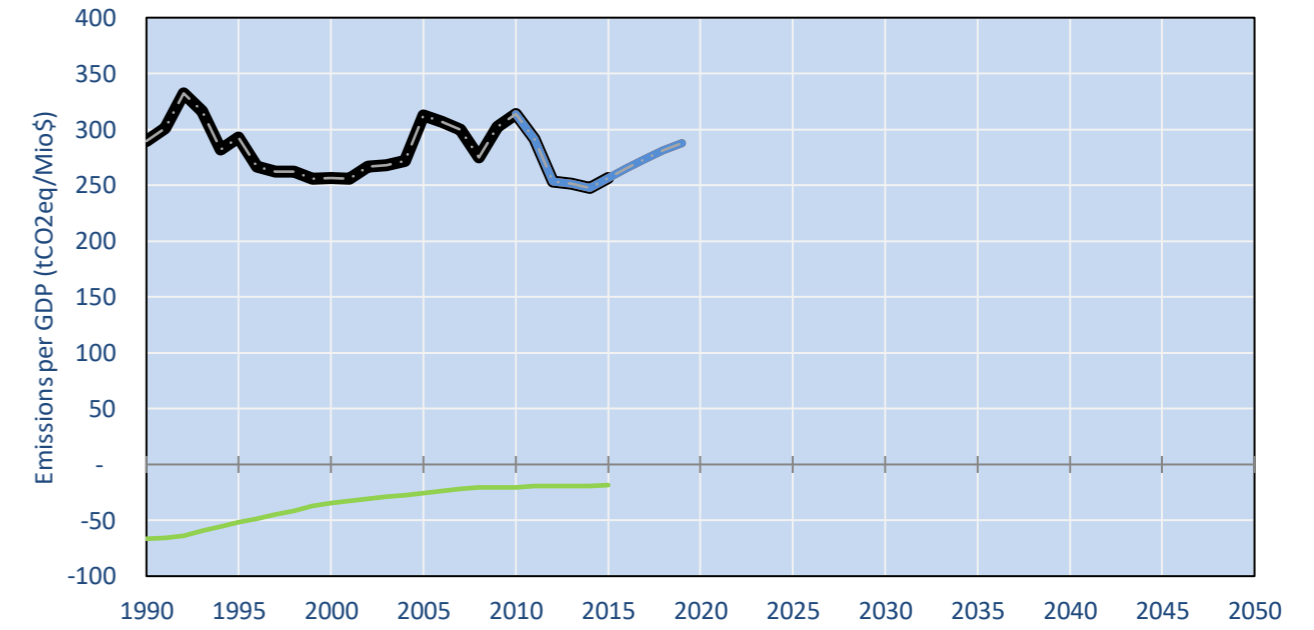


- Reference Total GHG excl. LULUCF
- Historical Covered Emissions, incl. LULUCF, if covered.
- LOW INDC Covered Emissions, incl. LULUCF if covered
- LOW INDC Covered + Non-Covered Emissions, excl. LULUCF
- HIGH INDC Covered Emissions, incl. LULUCF
- HIGH INDC Covered + Non-Covered Emissions, excl. LULUCF
- HIGH Cancun Pledges
- Reference LULUCF Emissions
- LOW INDC Levels
- LOW INDC Covered Emissions, excl. LULUCF
- HIGH INDC Levels
- HIGH INDC Covered Emissions, excl. LULUCF
- LOW Cancun Pledges
- Not-covered GHG excl. LULUCF (Region Projection)

Per-Capita Emissions

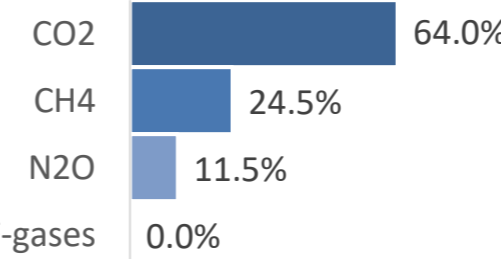


GHG Emissions per GDP

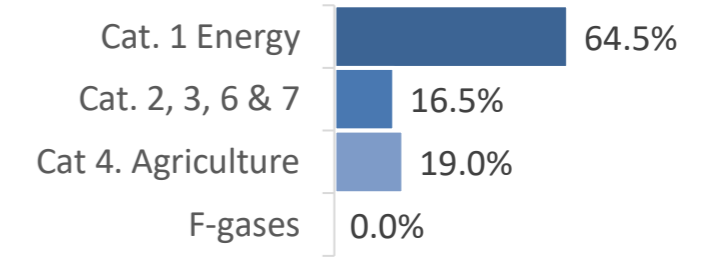


2015 Total GHG Emissions excl. LULUCF

By Gas:



By Sector:



GHG Emissions

	1990	2000	2005	2010	2015	2020		2025		2030	
(MtCO ₂ eq/yr in GWP AR4)						low	high	low	high	low	high
Assumed LULUCF Accounting Credits (-)/Debits (+)	-	-	-	-	-	-	-	-	-	-	-
NDC covered LULUCF Emissions	-	-	-	-	-	-	-	-	-	-	-
NDC covered Emissions excl. LULUCF	-	-	-	-	-	-	-	-	-	-	-
Total GHG excl. LULUCF	0	0	1	1	1	1	1	1	1	1	1
Total GHG incl. LULUCF	0	0	1	1	1	1	1	1	1	1	1

Relative GHG Emissions

	1990	2000	2005	2010	2015	2020		2025		2030	
Total excl. LULUCF						low	high	low	high	low	high
Relative 1990	100%	170%	277%	354%	319%	443%	443%	508%	508%	557%	557%
Relative 2000	59%	100%	162%	208%	187%	260%	260%	298%	298%	327%	327%
Relative 2005	36%	62%	100%	128%	115%	160%	160%	184%	184%	201%	201%
Relative 2010	28%	48%	78%	100%	90%	125%	125%	144%	144%	157%	157%
Relative 2015	31%	54%	87%	111%	100%	139%	139%	160%	160%	175%	175%

Per-Capita Emissions

	1990	2000	2005	2010	2015	2020		2025		2030	
Total excl. LULUCF						low	high	low	high	low	high
Population (Mio)	0	0	0	0	1	1	1	1	1	1	1
Per-Capita Emissions (tCO ₂ eq/cap)	0.7	1.0	1.5	1.8	1.5	2.0	2.0	2.2	2.2	2.3	2.3
Relative 1990	100%	133%	199%	246%	209%	273%	273%	297%	297%	309%	309%
Relative 2000	75%	100%	150%	186%	158%	206%	206%	224%	224%	233%	233%
Relative 2005	50%	67%	100%	124%	105%	137%	137%	149%	149%	155%	155%
Relative 2010	41%	54%	81%	100%	85%	111%	111%	120%	120%	126%	126%
Relative 2015	48%	63%	95%	118%	100%	131%	131%	142%	142%	148%	148%

Data Sources:

- Cat1_CO2 PRIMAPHIST17
- Cat2367_CO2 PRIMAPHIST17
- Cat4_CO2 PRIMAPHIST17
- Cat5_CO2 PRIMAPHIST17
- Cat1_CH4 PRIMAPHIST17
- Cat2367_CH4 PRIMAPHIST17
- Cat4_CH4 PRIMAPHIST17
- Cat5_CH4 PRIMAPHIST17
- Cat1_N2O PRIMAPHIST17
- Cat2367_N2O PRIMAPHIST17
- Cat4_N2O PRIMAPHIST17
- Cat5_N2O PRIMAPHIST17
- Cat0_HFCs PRIMAPHIST17
- Cat0_PFCs PRIMAPHIST17
- Cat0_SF6 PRIMAPHIST17
- Population UN 2015 Population Projections MEDIUM
- GDP IMF WEO 2015, PPP adjusted GDP, constant 2009 prices...
- IPCC WG3 Scenario IMAGE | AMPERE2-550-FullTech-HST
- PRIMAPHIST16 description: www.pik-potsdam.de/primap-live/primap-hist/
- Gratefully acknowledged in particular: PRIMAP, CAIT, CDIAC, EDGAR, IPCC, IEA, UNEP GAP Team, AMPERE Team and comments on earlier versions, in particular by Giacomo Grassi. Errors and misjudgements are our own. Malte Meinshausen & Ryan Alexander; The "Fiji COP23" Edition was enabled through support via the BMUB project UM14 41 4060
- This Factsheet is available at www.climatecollege.unimelb.edu.au/indc-factsheets. Check out as well: www.climateactiontracker.org, www.mitigation-contributions.org, cait.wri.org, infographics.pbl.nl/indc, live.primap.org, www.unep.org/climatechange/pledgepipeline, and our twitter feed @ClimateCollege
- Cat5A1_CO2 UNFCCC CRF + Nat. Comms.
- Cat5A2_CO2 UNFCCC CRF + Nat. Comms.
- Cat5LtoNonFL_CO2 UNFCCC CRF + Nat. Comms.
- Cat5GCMCMWM_C UNFCCC CRF
- Cat5A1ForestFires UNFCCC Cat5 + EDGAR(IPCC Database)
- Cat5A1HWP_CO2 UNFCCC CRF + Nat. Comms.
- Cat5bisA_CO2 UNFCCC CRF + NATCOMM.
- Cat5bisB_CO2 UNFCCC CRF + NATCOMM.
- Cat5bisC_CO2 UNFCCC CRF + NATCOMM.
- Cat5bisD_CO2 UNFCCC CRF + NATCOMM.
- Cat5bisE_CO2 UNFCCC CRF + NATCOMM.
- PRO_WM_Cat5_G UNFCCC Annex I Reports
- Metric GWP AR4

climatecollege.unimelb.edu.au



Various 'fair' contributions for a global 'least-cost' 2°C path (total incl. LULUCF):

More info on www.mitigation-contributions.org

2025 rel. 2010:		2030 rel. 2010:		"Fair" contributions for a global 'least-cost' 2°C track:	
LEADER	#N/A	LEADER	#N/A	LEADER	Leader
CDC	#N/A	CDC	#N/A	CDC	Common-but-diff. per-cap. convergence
ECPC50	#N/A	ECPC50	#N/A	ECPC50	Eq. cum. Per-capita since 1950
ECPC90	#N/A	ECPC90	#N/A	ECPC90	Eq. cum. Per-capita since 1990
GDR	#N/A	GDR	#N/A	GDR	Greenhouse Development Rights
INDC HIGH	47%	INDC HIGH	61%	#N/A	No available data
INDC LOW	47%	INDC LOW	61%		