

# Burkina Faso

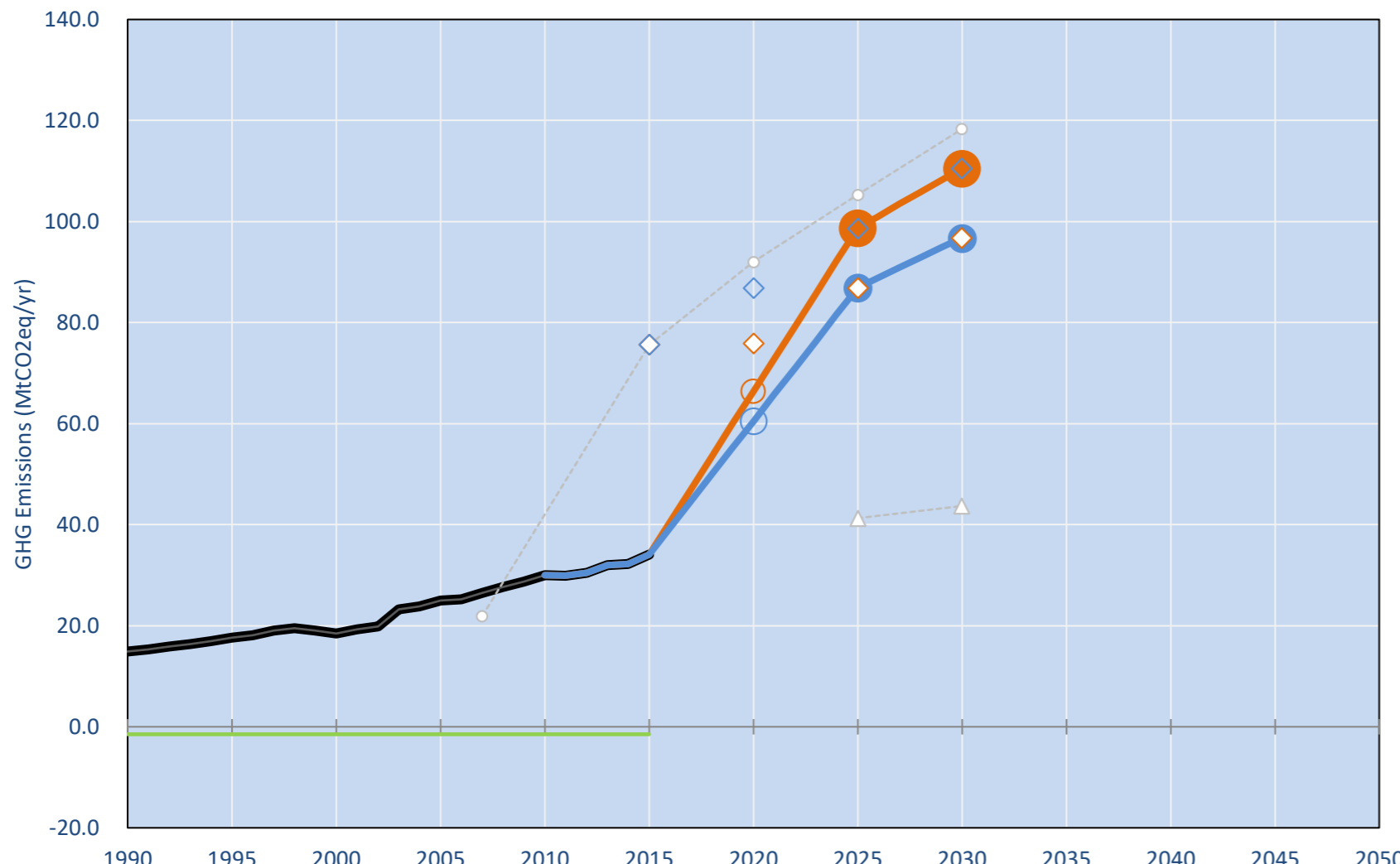
Per-Capita Emissions in 2030 rel. 2015 (excl. LULUCF): **+102%**

NDC 2025	NDC 2030	2015 World Rank	2025 World Rank	2030 World Rank
-6% rel. BAU of 105.3 Mt	-7% rel. BAU of 118.3 Mt	0.1% #101	0.2% #62	0.2% #58
-17% rel. BAU of 105.3 Mt	-18% rel. BAU of 118.3 Mt	1.9t #158	3.9t #109	3.8t #110

NDC: 6.6% emission reduction compared to BAU by 2030 Conditional target: 18.2% subject to international support. (GWP unclear)

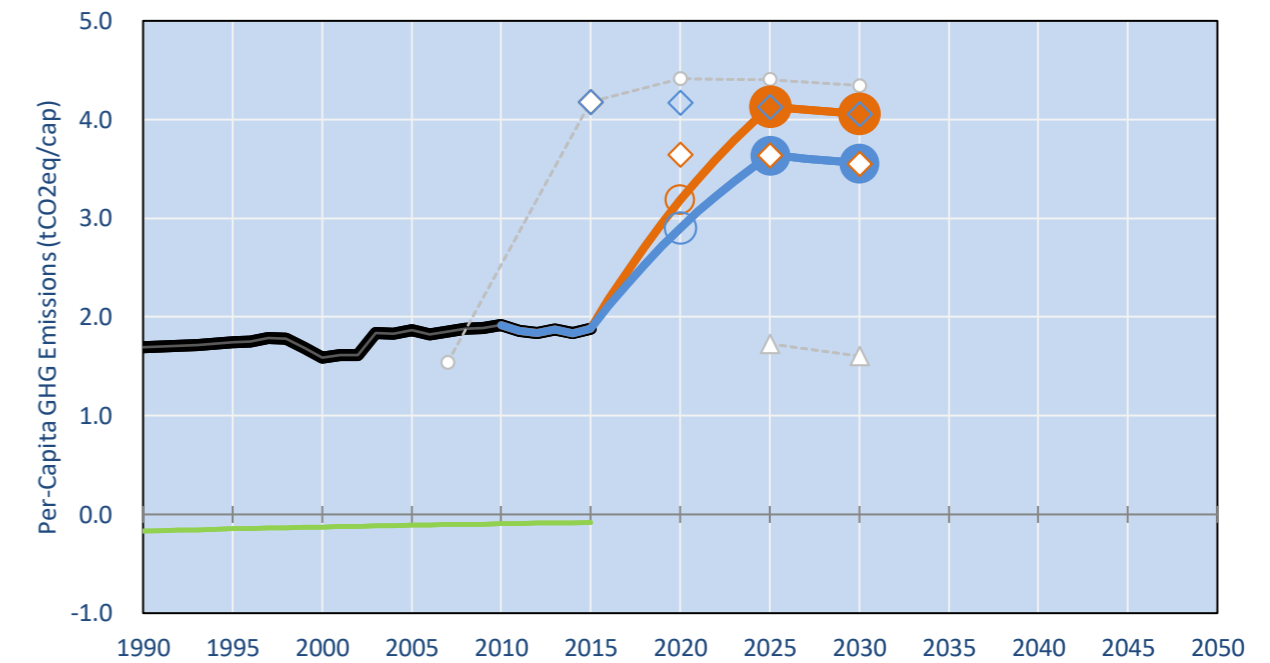
INDC Submitted: 28/09/2015

## GHG Emissions

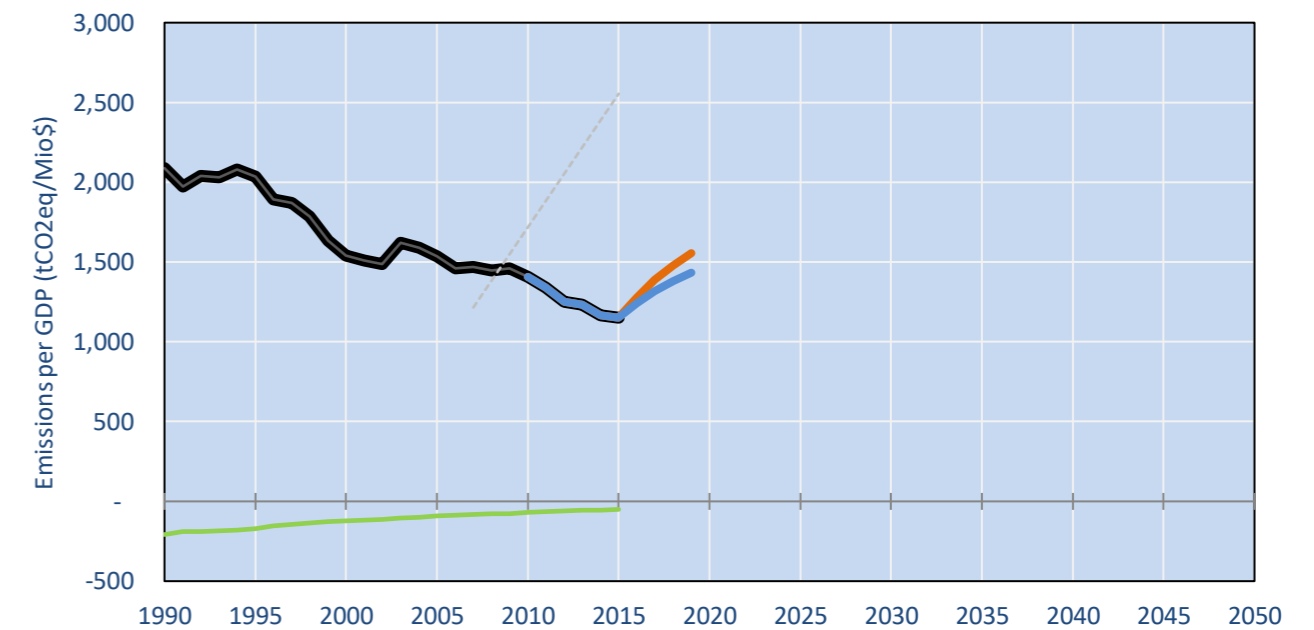


- Reference Total GHG excl. LULUCF
- Historical Covered Emissions, incl. LULUCF, if covered.
- LOW INDC Covered Emissions, incl. LULUCF if covered
- LOW INDC Covered + Non-Covered Emissions, excl. LULUCF
- HIGH INDC Covered Emissions, incl. LULUCF
- HIGH INDC Covered + Non-Covered Emissions, excl. LULUCF
- HIGH Cancun Pledges
- Reference LULUCF Emissions
- LOW INDC Levels
- LOW INDC Covered Emissions, excl. LULUCF
- HIGH INDC Levels
- HIGH INDC Covered Emissions, excl. LULUCF
- LOW Cancun Pledges
- Burkina Faso conditional INDC
- Burkina Faso unconditional INDC
- Burkina Faso BAU
- Regional/Gas-specific BAU
- Not-covered GHG excl. LULUCF (Region Projection)

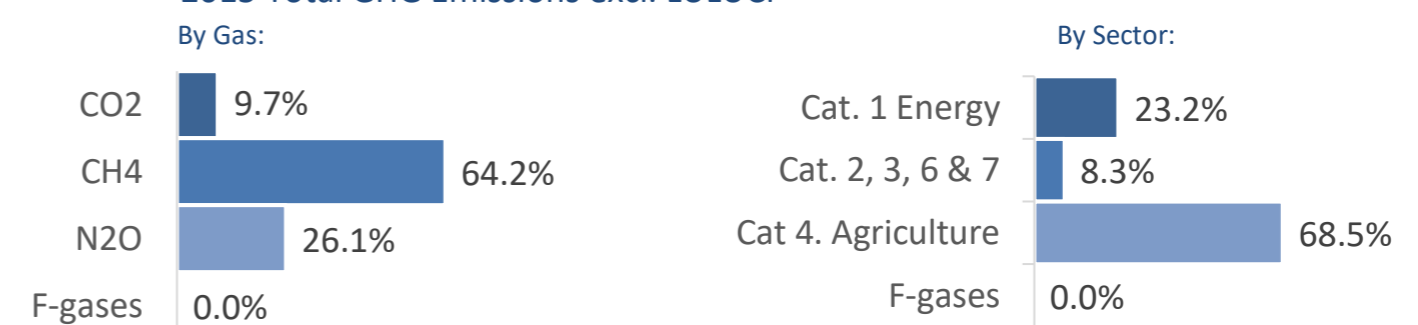
## Per-Capita Emissions



## GHG Emissions per GDP



## 2015 Total GHG Emissions excl. LULUCF



## GHG Emissions

	1990	2000	2005	2010	2015	2020		2025		2030	
(MtCO2eq/yr in GWP AR5)						low	high	low	high	low	high
Assumed LULUCF Accounting Credits (-)/Debits (+)	-	-	-	-	-	-	-	-	-	-	-
NDC covered LULUCF Emissions	-	-	-	-	-	-	-	-	-	-	-
NDC covered Emissions excl. LULUCF	15	18	25	30	34	66	60	99	87	111	97
Total GHG excl. LULUCF	15	18	25	30	34	66	60	99	87	111	97
Total GHG incl. LULUCF	13	17	24	29	33	65	59	97	85	109	95

## Relative GHG Emissions

	1990	2000	2005	2010	2015	2020		2025		2030	
Total excl. LULUCF						low	high	low	high	low	high
Relative 1990	100%	124%	168%	201%	229%	445%	406%	662%	583%	741%	649%
Relative 2000	81%	100%	136%	163%	185%	360%	328%	535%	471%	599%	525%
Relative 2005	60%	74%	100%	120%	136%	265%	242%	395%	348%	442%	387%
Relative 2010	50%	61%	83%	100%	114%	202%	202%	329%	290%	368%	323%
Relative 2015	44%	54%	73%	88%	100%	195%	178%	290%	255%	324%	284%

## Per-Capita Emissions

	1990	2000	2005	2010	2015	2020		2025		2030	
Total excl. LULUCF						low	high	low	high	low	high
Population (Mio)	9	12	13	16	18	21	21	24	24	27	27
Per-Capita Emissions (tCO2eq/cap)	1.7	1.6	1.9	1.9	1.9	3.2	2.9	4.1	3.6	4.1	3.6
Relative 1990	100%	94%	110%	113%	111%	188%	171%	244%	215%	240%	210%
Relative 2000	107%	100%	117%	121%	119%	200%	183%	260%	229%	255%	224%
Relative 2005	91%	85%	100%	103%	101%	171%	156%	222%	195%	218%	191%
Relative 2010	88%	83%	97%	100%	98%	166%	151%	215%	190%	211%	185%
Relative 2015	90%	84%	99%	102%	100%	169%	154%	219%	193%	215%	189%

## Data Sources:

Cat1_CO2	PRIMAPHIST17	Cat5A1_CO2	UNFCCC CRF + Nat. Comms.
Cat2367_CO2	PRIMAPHIST17	Cat5A2_CO2	UNFCCC CRF + Nat. Comms.
Cat4_CO2	PRIMAPHIST17	Cat5LtoNonFL_CO2	UNFCCC CRF + Nat. Comms.
Cat5_CO2	PRIMAPHIST17	Cat5GMCMWMM_C	UNFCCC CRF
Cat1_CH4	PRIMAPHIST17	Cat5A1ForestFires	UNFCCC Cat5 + EDGAR(IPCC Database)
Cat2367_CH4	PRIMAPHIST17	Cat5A1HWP_CO2	UNFCCC CRF + Nat. Comms.
Cat4_CH4	PRIMAPHIST17	Cat5bisA_CO2	UNFCCC CRF + NATCOMM.
Cat5_CH4	PRIMAPHIST17	Cat5bisB_CO2	UNFCCC CRF + NATCOMM.
Cat1_N2O	PRIMAPHIST17	Cat5bisC_CO2	UNFCCC CRF + NATCOMM.
Cat2367_N2O	PRIMAPHIST17	Cat5bisD_CO2	UNFCCC CRF + NATCOMM.
Cat4_N2O	PRIMAPHIST17	Cat5bisE_CO2	UNFCCC CRF + NATCOMM.
Cat5_N2O	PRIMAPHIST17	PRO_WM_Cat5_G	UNFCCC Annex I Reports
Cat0_HFCs	PRIMAPHIST17	Metric	GWP AR5
Cat0_PFCs	PRIMAPHIST17		
Cat0_SF6	PRIMAPHIST17		
Population	UN 2015 Population Projections MEDIUM		
GDP	IMF WEO 2015, PPP adjusted GDP, constant 2009 prices...		
	IPCC WG3 Scenario IMAGE   AMPERE2-550-FullTech-HST		
	PRIMAPHIST16 description: www.pik-potsdam.de/primap-live/primap-hist/		
	Gratefully acknowledged in particular: PRIMAP, CAIT, CDIAC, EDGAR, IPCC, IEA, UNEP GAP Team, AMPERE Team and comments on earlier versions, in particular by Giacomo Grassi. Errors and misjudgements are our own. Malte Meinshausen & Ryan Alexander; The "Fiji COP23" Edition was enabled through support via the BMUB project UM14 41 4060		
	This Factsheet is available at www.climatecollege.unimelb.edu.au/indc-factsheets. Check out as well: www.climateactiontracker.org, www.mitigation-contributions.org, cait.wri.org, infographics.pbl.nl/indc, live.primap.org, www.unep.org/climatechange/pledgepipeline, and our twitter feed @ClimateCollege		

## Various 'fair' contributions for a global 'least-cost' 2°C path (total incl. LULUCF):

## More info on www.mitigation-contributions.org

2025 rel. 2010:	2030 rel. 2010:
LEADER #N/A	LEADER #N/A
CDC #N/A	CDC #N/A
ECPC50 #N/A	ECPC50 #N/A
ECPC90 #N/A	ECPC90 #N/A
GDR #N/A	GDR #N/A
INDC HIGH <b>200%</b>	INDC HIGH <b>234%</b>
INDC LOW <b>241%</b>	INDC LOW <b>282%</b>

## "Fair" contributions for a global 'least-cost' 2°C track:

LEADER	Leader
CDC	Common-but-diff. per-cap. convergence
ECPC50	Eq. cum. Per-capita since 1950
ECPC90	Eq. cum. Per-capita since 1990
GDR	Greenhouse Development Rights
#N/A	No available data