

Paris Agreement ratified on: 11/11/2016

# Botswana

Per-Capita Emissions in 2030 rel. 2015 (excl. LULUCF):

**-22%**

NDC 2025

NDC 2030

2015 World Rank

2025 World Rank

2030 World Rank

Share of World Emissions excl. LULUCF (Rank):

0.0% #122

0.0% #129

0.0% #133

Per-Capita Emissions (tCO2eq/cap)

7.6t #54

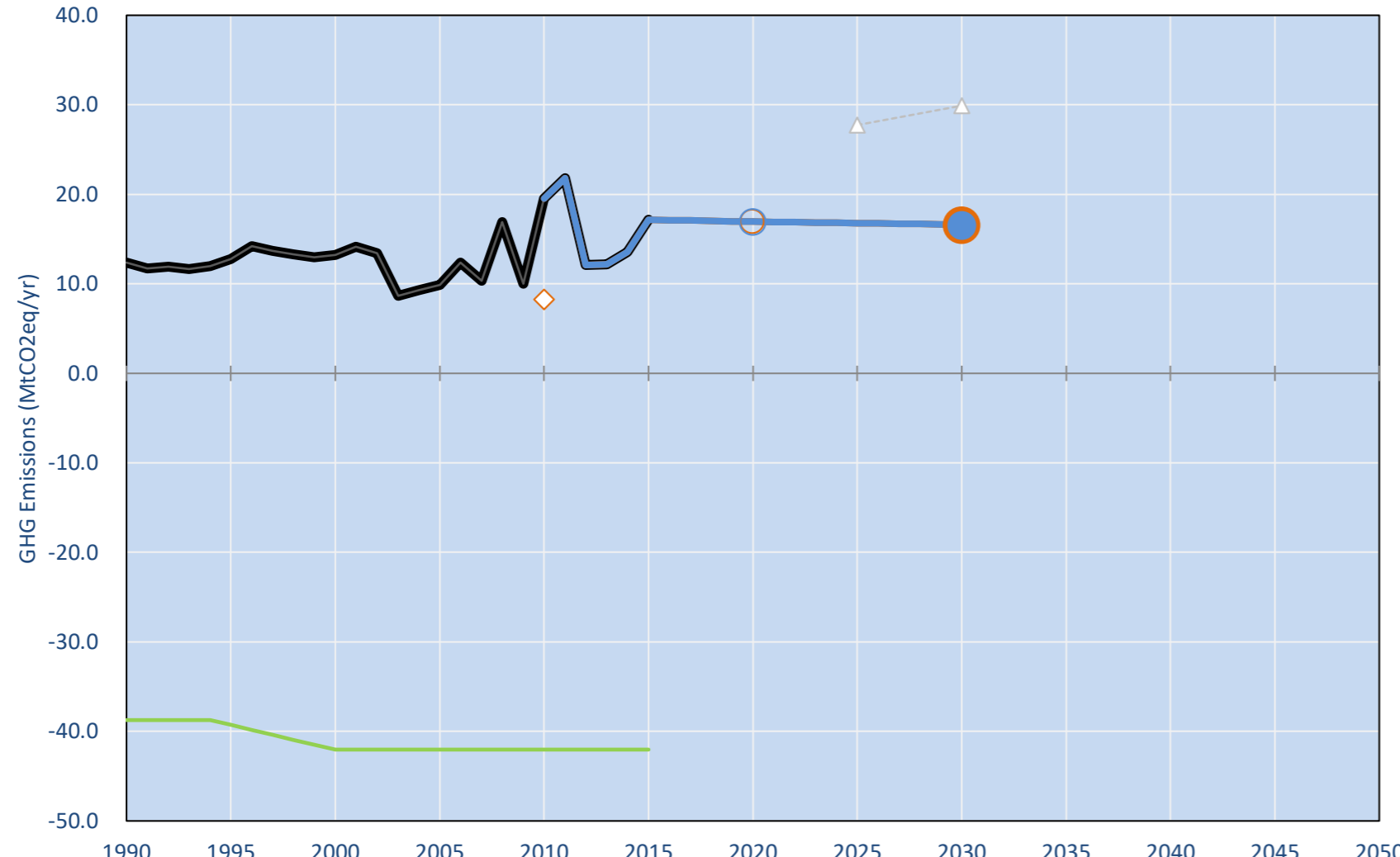
6.3t #72

5.9t #82

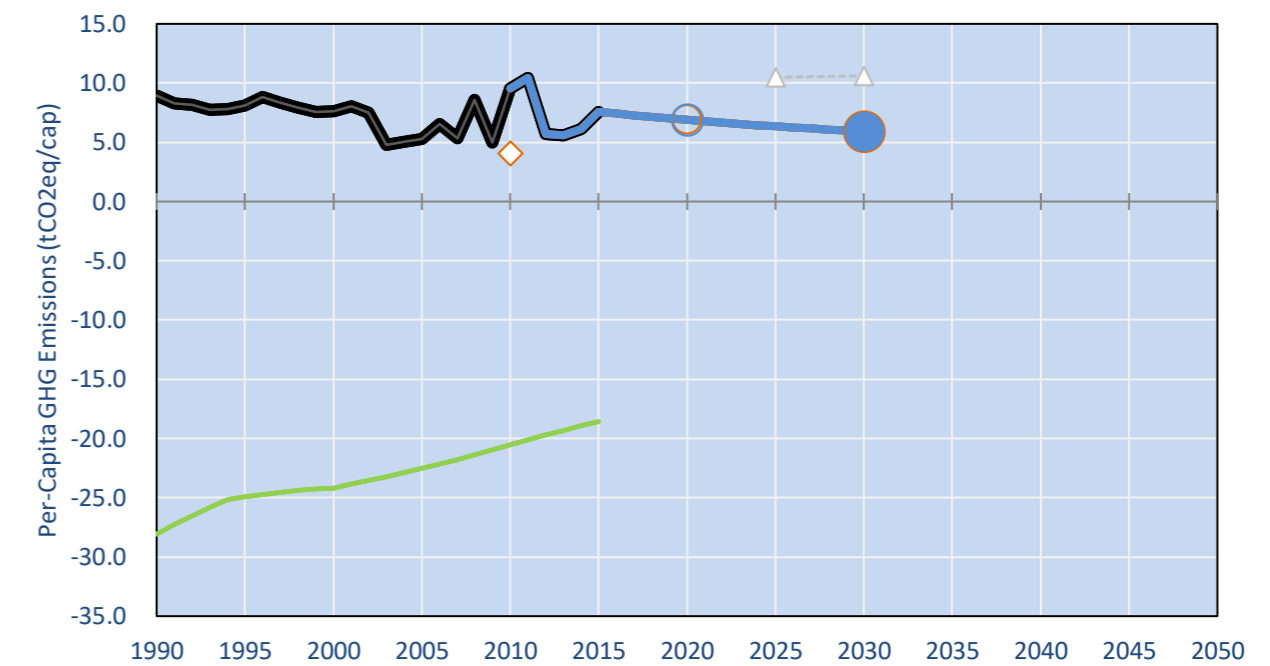
NDC: 10% GHG emission reduction compared to BAU levels by 2030 Conditional target: additional 10% reduction pending on international support. (GWP unclear)

NDC Submitted: 1/10/2015

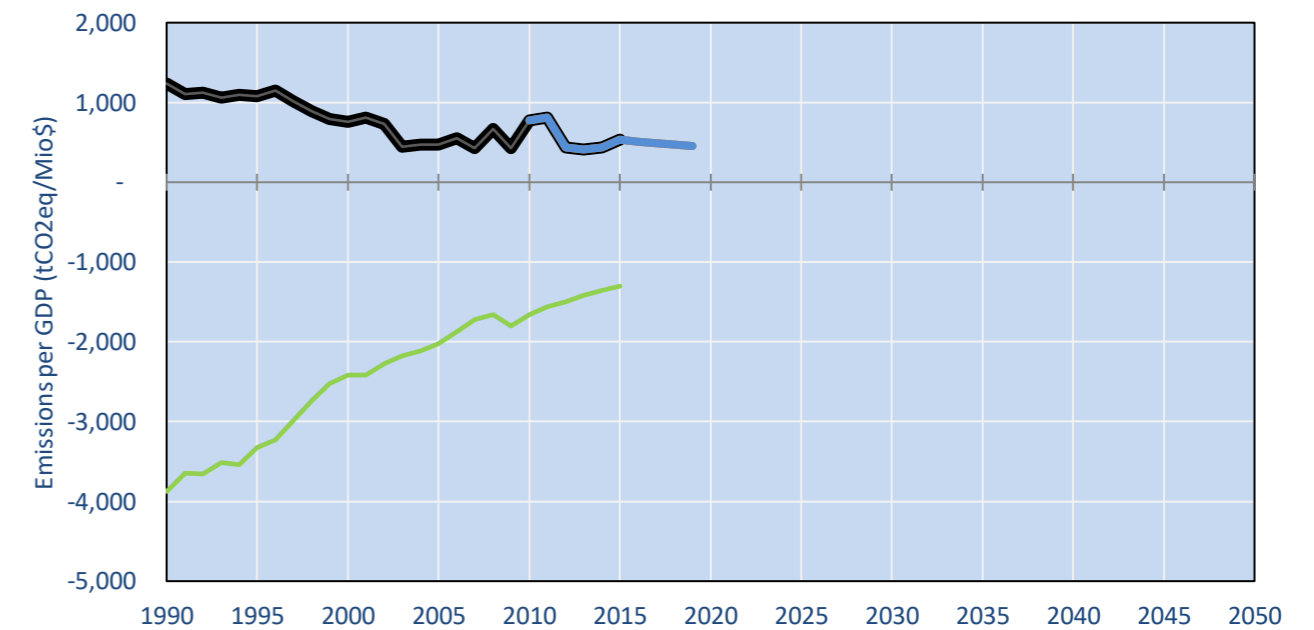
## GHG Emissions



## Per-Capita Emissions

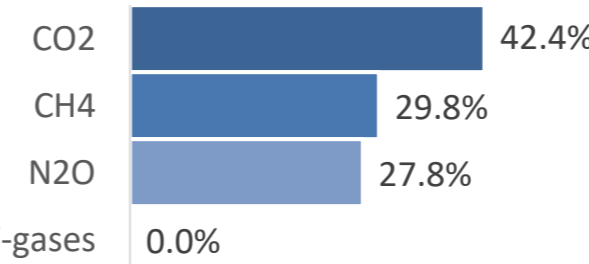


## GHG Emissions per GDP

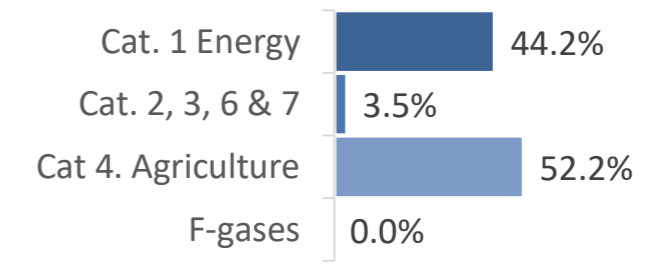


## 2015 Total GHG Emissions excl. LULUCF

By Gas:



By Sector:



## GHG Emissions

	1990	2000	2005	2010	2015	2020	2025	2030
(MtCO2eq/yr in GWP SAR)						low high	low high	low high
Assumed LULUCF Accounting Credits (-)/Debits (+)								
NDC covered LULUCF Emissions								
NDC covered Emissions excl. LULUCF	12	13	10	20	17	17	17	17
Total GHG excl. LULUCF	12	13	10	20	17	17	17	17
Total GHG incl. LULUCF	26	29	32	22	25	25	25	25

## Relative GHG Emissions

	1990	2000	2005	2010	2015	2020	2025	2030
Total excl. LULUCF						low high	low high	low high
Relative 1990	100%	107%	80%	158%	139%	137%	136%	134%
Relative 2000	94%	100%	75%	148%	130%	128%	127%	126%
Relative 2005	125%	134%	100%	198%	174%	172%	170%	168%
Relative 2010	63%	68%	50%	100%	88%	87%	86%	85%
Relative 2015	72%	77%	58%	114%	100%	99%	98%	97%

## Per-Capita Emissions

	1990	2000	2005	2010	2015	2020	2025	2030
Total excl. LULUCF						low high	low high	low high
Population (Mio)	1	2	2	2	2	2	3	3
Per-Capita Emissions (tCO2eq/cap)	9.0	7.6	5.3	9.5	7.6	6.9	6.3	5.9
Relative 1990	100%	85%	59%	106%	85%	77%	71%	66%
Relative 2000	118%	100%	69%	125%	99%	91%	83%	77%
Relative 2005	169%	144%	100%	180%	143%	130%	120%	111%
Relative 2010	94%	80%	55%	100%	79%	72%	66%	62%
Relative 2015	118%	101%	70%	126%	100%	91%	84%	78%

## Data Sources:

Cat1_CO2	PRIMAPHIST17	Cat5A1_CO2	UNFCCC CRF + Nat. Comms.
Cat2367_CO2	PRIMAPHIST17	Cat5A2_CO2	UNFCCC CRF + Nat. Comms.
Cat4_CO2	PRIMAPHIST17	Cat5LtoNonFL_CO2	UNFCCC CRF + Nat. Comms.
Cat5_CO2	PRIMAPHIST17	Cat5GCMCWMW_C	UNFCCC CRF
Cat1_CH4	PRIMAPHIST17	Cat5A1ForestFires	UNFCCC Cat5 + EDGAR(IPCC Database)
Cat2367_CH4	PRIMAPHIST17	Cat5A1HWP_CO2	UNFCCC CRF + Nat. Comms.
Cat4_CH4	PRIMAPHIST17	Cat5bisA_CO2	UNFCCC CRF + NATCOMM.
Cat5_CH4	PRIMAPHIST17	Cat5bisB_CO2	UNFCCC CRF + NATCOMM.
Cat1_N2O	PRIMAPHIST17	Cat5bisC_CO2	UNFCCC CRF + NATCOMM.
Cat2367_N2O	PRIMAPHIST17	Cat5bisD_CO2	UNFCCC CRF + NATCOMM.
Cat4_N2O	PRIMAPHIST17	Cat5bisE_CO2	UNFCCC CRF + NATCOMM.
Cat5_N2O	PRIMAPHIST17	PRO_WM_Cat5_G	UNFCCC Annex I Reports
Cat0_HFCs	PRIMAPHIST17	Metric	GWP SAR
Cat0_PFCs	PRIMAPHIST17		
Cat0_SF6	PRIMAPHIST17		
Population	UN 2015 Population Projections MEDIUM		
GDP	IMF WEO 2015, PPP adjusted GDP, constant 2009 prices...		
	IPCC WG3 Scenario IMAGE   AMPERE2-550-FullTech-HST		
	PRIMAPHIST16 description: www.pik-potsdam.de/primap-live/primap-hist/		
	Gratefully acknowledged in particular: PRIMAP, CAIT, CDIAC, EDGAR, IPCC, IEA, UNEP GAP Team, AMPERE Team and comments on earlier versions, in particular by Giacomo Grassi. Errors and misjudgements are our own. Malte Meinshausen & Ryan Alexander; The "Fiji COP23" Edition was enabled through support via the BMUB project UM14 41 4060		
	This Factsheet is available at www.climatecollege.unimelb.edu.au/indc-factsheets. Check out as well: www.climateactiontracker.org, www.mitigation-contributions.org, cait.wri.org, infographics.pbl.nl/indc, live.primap.org, www.unep.org/climatechange/pledgepipeline, and our twitter feed @ClimateCollege		



## Various 'fair' contributions for a global 'least-cost' 2°C path (total incl. LULUCF):

2025 rel. 2010:	2030 rel. 2010:
LEADER	#N/A
CDC	#N/A
ECPC50	#N/A
ECPC90	#N/A
GDR	#N/A
INDC HIGH	#N/A
INDC LOW	#N/A

## More info on www.mitigation-contributions.org

#N/A	No results shown, as 2010 total incl. LULUCF emissions below zero
#N/A	"Fair" contributions for a global 'least-cost' 2°C track:
LEADER	Leader
CDC	Common-but-diff. per-cap. convergence
ECPC50	Eq. cum. Per-capita since 1950
ECPC90	Eq. cum. Per-capita since 1990
GDR	Greenhouse Development Rights
#N/A	No available data