



Paris Agreement ratified on: 20/04/2016

# Belize

Per-Capita Emissions in 2030 rel. 2015 (excl. LULUCF):



**+20%**

NDC 2025

NDC 2030

2015 World Rank

2025 World Rank

2030 World Rank

Share of World Emissions excl. LULUCF (Rank):

0.0% #172

0.0% #173

0.0% #171

Per-Capita Emissions (tCO2eq/cap)

2.6t #137

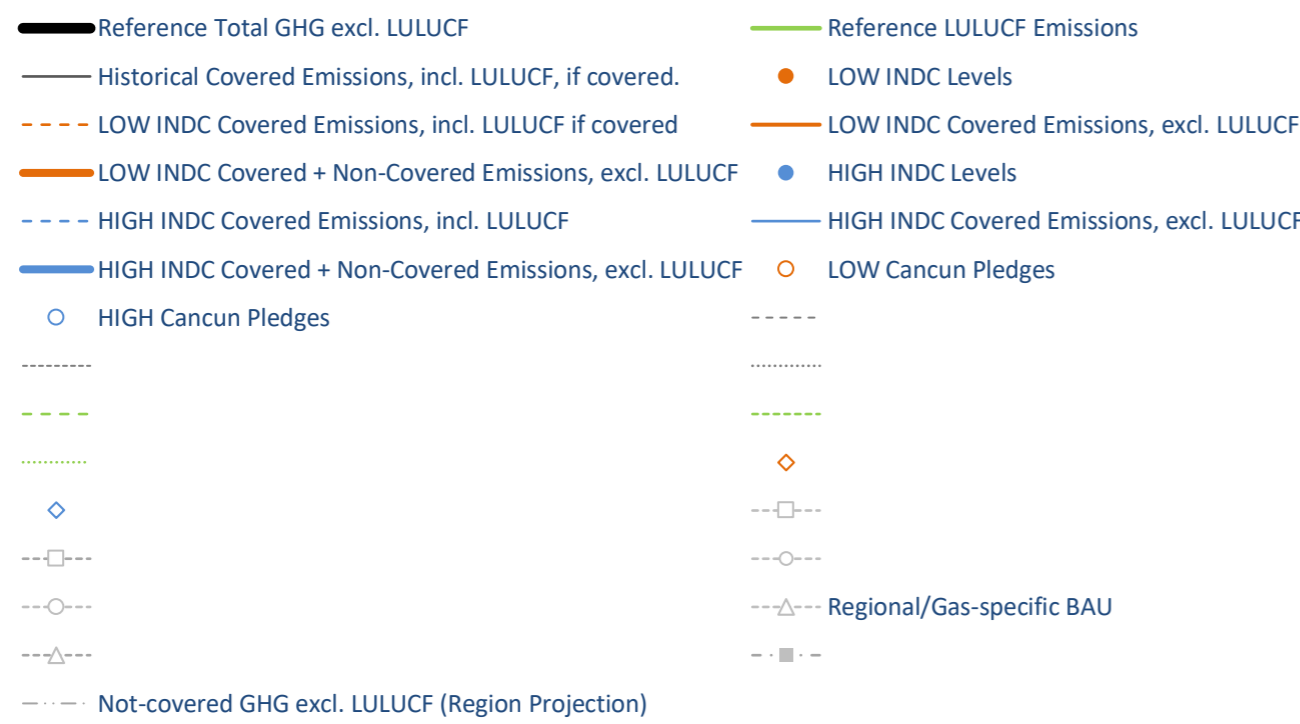
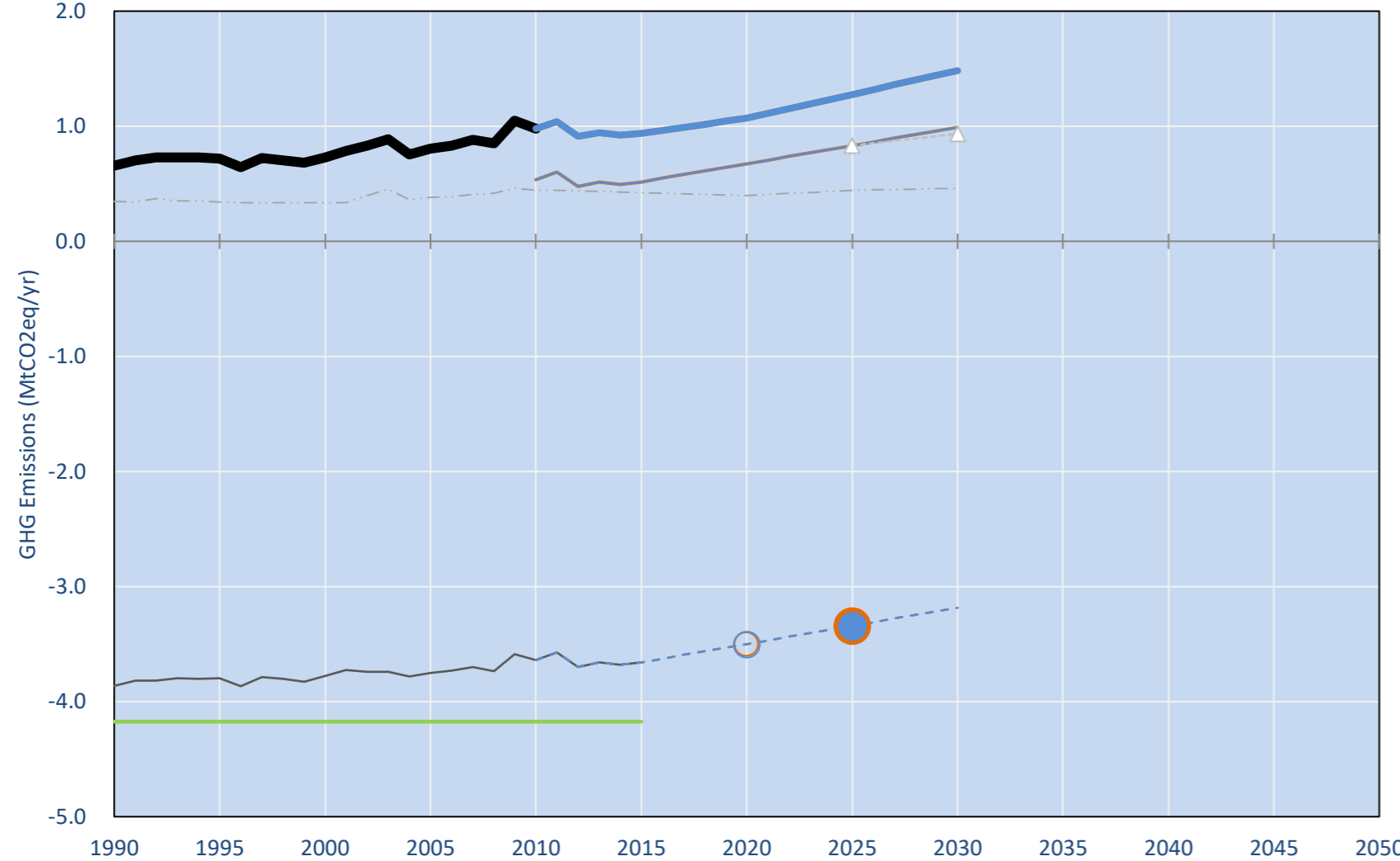
2.9t #128

3.1t #122

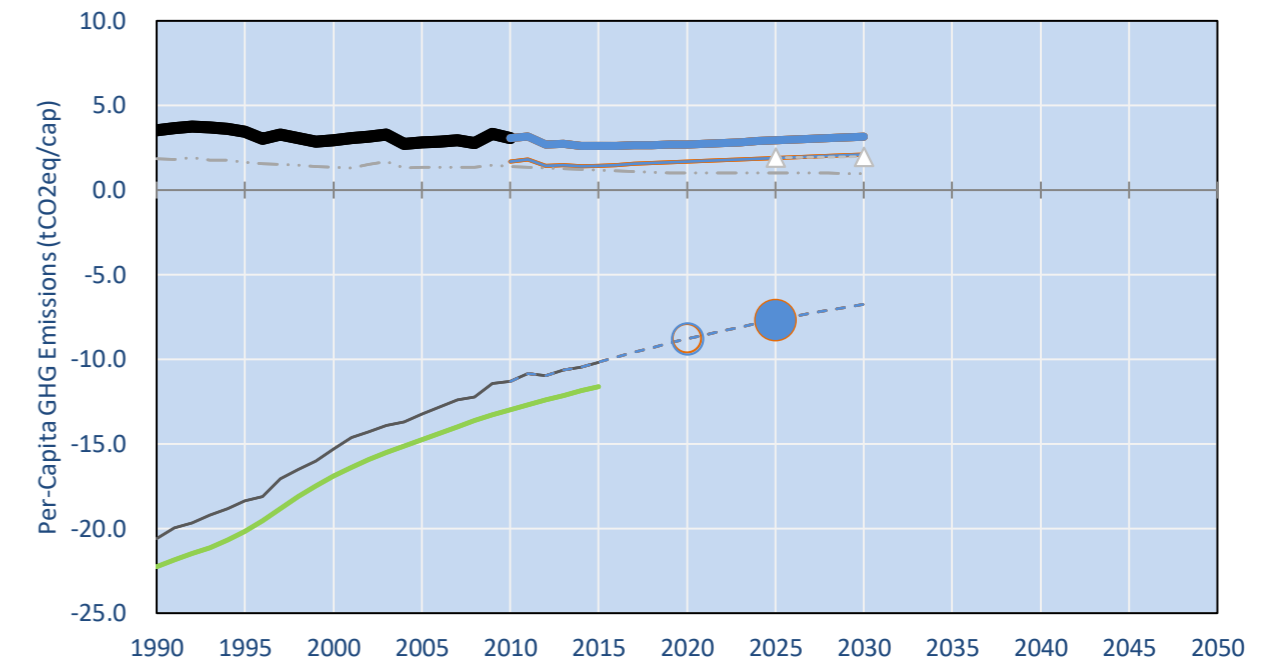
NDC: Action-based approach such national REDD+ strategy, reductions of GHG emissions in transport sector and others pending on support. (n/a (only CO2))

INDC Submitted: 1/10/2015

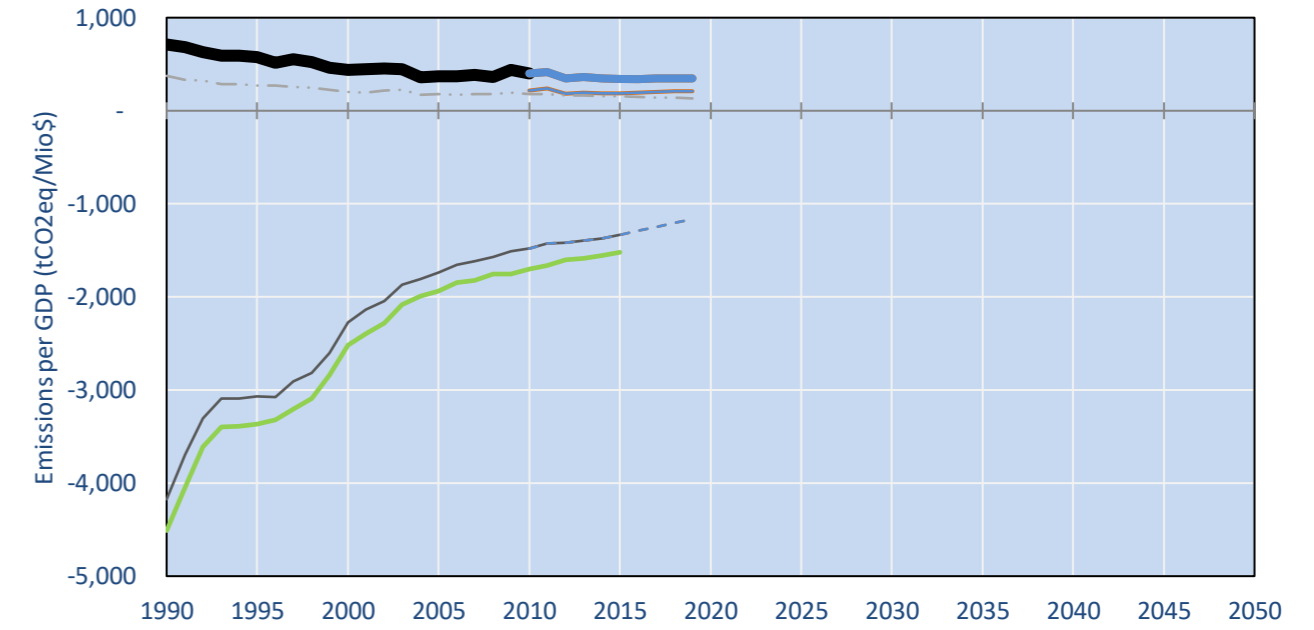
## GHG Emissions



## Per-Capita Emissions

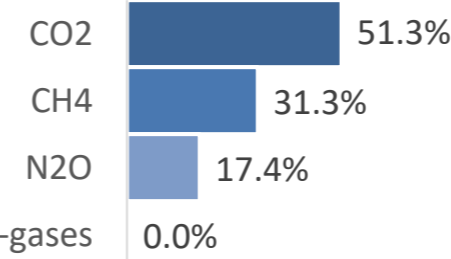


## GHG Emissions per GDP

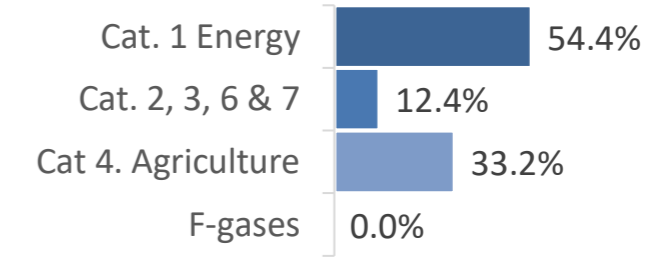


## 2015 Total GHG Emissions excl. LULUCF

By Gas:



By Sector:



## GHG Emissions

	1990	2000	2005	2010	2015	2020	2025	2030
(MtCO2eq/yr in GWP AR5)						low high	low high	low high
Assumed LULUCF Accounting Credits (-)/Debits (+)								
NDC covered LULUCF Emissions	-	4 -	4 -	4 -	4 -	4 -	4 -	4 -
NDC covered Emissions excl. LULUCF	0	0	0	1	1	1	1	1
Total GHG excl. LULUCF	1	1	1	1	1	1	1	1
Total GHG incl. LULUCF	-	4 -	3 -	3 -	3 -	3 -	3 -	3 -

## Relative GHG Emissions

	1990	2000	2005	2010	2015	2020	2025	2030
Total excl. LULUCF						low high	low high	low high
Relative 1990	100%	111%	122%	149%	142%	162%	162%	194%
Relative 2000	90%	100%	110%	134%	128%	146%	146%	175%
Relative 2005	82%	91%	100%	122%	117%	133%	133%	159%
Relative 2010	67%	75%	82%	100%	96%	109%	109%	130%
Relative 2015	70%	78%	86%	105%	100%	114%	114%	136%

## Per-Capita Emissions

	1990	2000	2005	2010	2015	2020	2025	2030
Total excl. LULUCF						low high	low high	low high
Population (Mio)	0	0	0	0	0	0	0	0
Per-Capita Emissions (tCO2eq/cap)	3.5	3.0	2.8	3.1	2.6	2.7	2.7	2.9
Relative 1990	100%	84%	81%	87%	74%	77%	83%	83%
Relative 2000	119%	100%	96%	103%	88%	91%	99%	99%
Relative 2005	124%	104%	100%	107%	92%	95%	103%	103%
Relative 2010	115%	97%	93%	100%	86%	88%	96%	96%
Relative 2015	135%	113%	109%	117%	100%	103%	112%	112%

## Data Sources:

Cat1_CO2	PRIMAPHIST17	Cat5A1_CO2	UNFCCC CRF + Nat. Comms.
Cat2367_CO2	PRIMAPHIST17	Cat5A2_CO2	UNFCCC CRF + Nat. Comms.
Cat4_CO2	PRIMAPHIST17	Cat5LtoNonFL_CO2	UNFCCC CRF + Nat. Comms.
Cat5_CO2	PRIMAPHIST17	Cat5GMCMWMM_C	UNFCCC CRF
Cat1_CH4	PRIMAPHIST17	Cat5A1ForestFires	UNFCCC Cat5 + EDGAR(IPCC Database)
Cat2367_CH4	PRIMAPHIST16	Cat5A1HWP_CO2	UNFCCC CRF + Nat. Comms.
Cat4_CH4	PRIMAPHIST17	Cat5bisA_CO2	UNFCCC CRF + NATCOMM.
Cat5_CH4	PRIMAPHIST16	Cat5bisB_CO2	UNFCCC CRF + NATCOMM.
Cat1_N2O	PRIMAPHIST17	Cat5bisC_CO2	UNFCCC CRF + NATCOMM.
Cat2367_N2O	PRIMAPHIST17	Cat5bisD_CO2	UNFCCC CRF + NATCOMM.
Cat4_N2O	COUNTRY-SPECIFIC USER DATA	Cat5bisE_CO2	UNFCCC CRF + NATCOMM.
Cat5_N2O	PRIMAPHIST17	PRO_WM_Cat5_G	UNFCCC Annex I Reports
Cat0_HFCs	PRIMAPHIST17	Metric	GWP AR5
Cat0_PFCs	PRIMAPHIST17		
Cat0_SF6	PRIMAPHIST17		
Population	UN 2015 Population Projections MEDIUM		
GDP	IMF WEO 2015, PPP adjusted GDP, constant 2009 prices...		
IPCC WG3 Scenario	IMAGE   AMPERE2-550-FullTech-HST		
PRIMAPHIST16 description:	www.pik-potsdam.de/primap-live/primap-hist/		
Gratefully acknowledged in particular:	PRIMAP, CAIT, CDIAC, EDGAR, IPCC, IEA, UNEP Gap Team, AMPERE Team and comments on earlier versions, in particular by Giacomo Grassi. Errors and misjudgements are our own. Malte Meinshausen & Ryan Alexander; The "Fiji COP23" Edition was enabled through support via the BMUB project UM14 41 4060		
This Factsheet is available at	www.climatecollege.unimelb.edu.au/indc-factsheets. Check out as well: www.climateactiontracker.org, www.mitigation-contributions.org, cait.wri.org, infographics.pbl.nl/indc, live.primap.org, www.unep.org/climatechange/pledgepipeline, and our twitter feed @ClimateCollege		

climatecollege.unimelb.edu.au



## Various 'fair' contributions for a global 'least-cost' 2°C path (total incl. LULUCF):

2025 rel. 2010:	2030 rel. 2010:
LEADER	#N/A
CDC	#N/A
ECPC50	#N/A
ECPC90	#N/A
GDR	#N/A
INDC HIGH	#N/A
INDC LOW	#N/A

## More info on www.mitigation-contributions.org

#N/A	No results shown, as 2010 total incl. LULUCF emissions below zero
#N/A	"Fair" contributions for a global 'least-cost' 2°C track:
LEADER	Leader
CDC	Common-but-diff. per-cap. convergence
ECPC50	Eq. cum. Per-capita since 1950
ECPC90	Eq. cum. Per-capita since 1990
GDR	Greenhouse Development Rights
#N/A	No available data