

# Belize

Per-Capita Emissions in 2030 rel. 2015 (excl. LULUCF): **+21%**

NDC 2025

NDC 2030

2015 World Rank

2025 World Rank

2030 World Rank

Share of World Emissions excl. LULUCF (Rank):

0.0% #172

0.0% #173

0.0% #171

Per-Capita Emissions (tCO2eq/cap)

2.6t #136

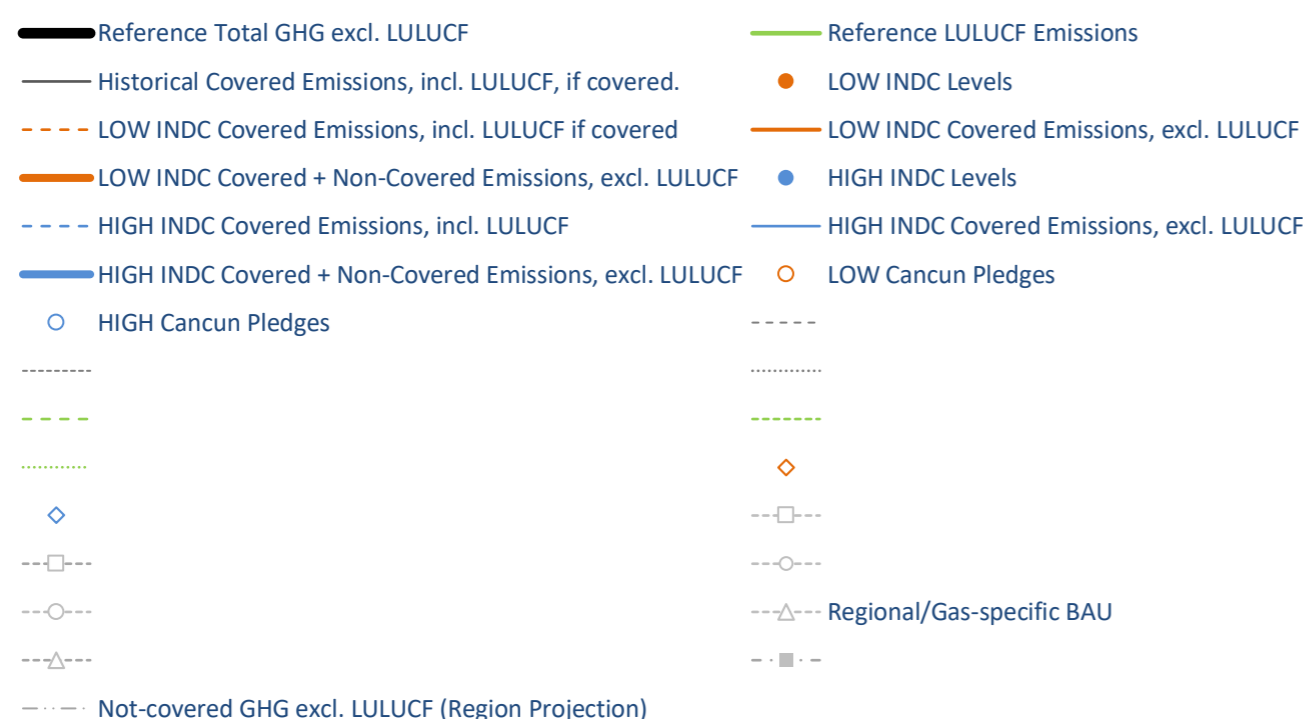
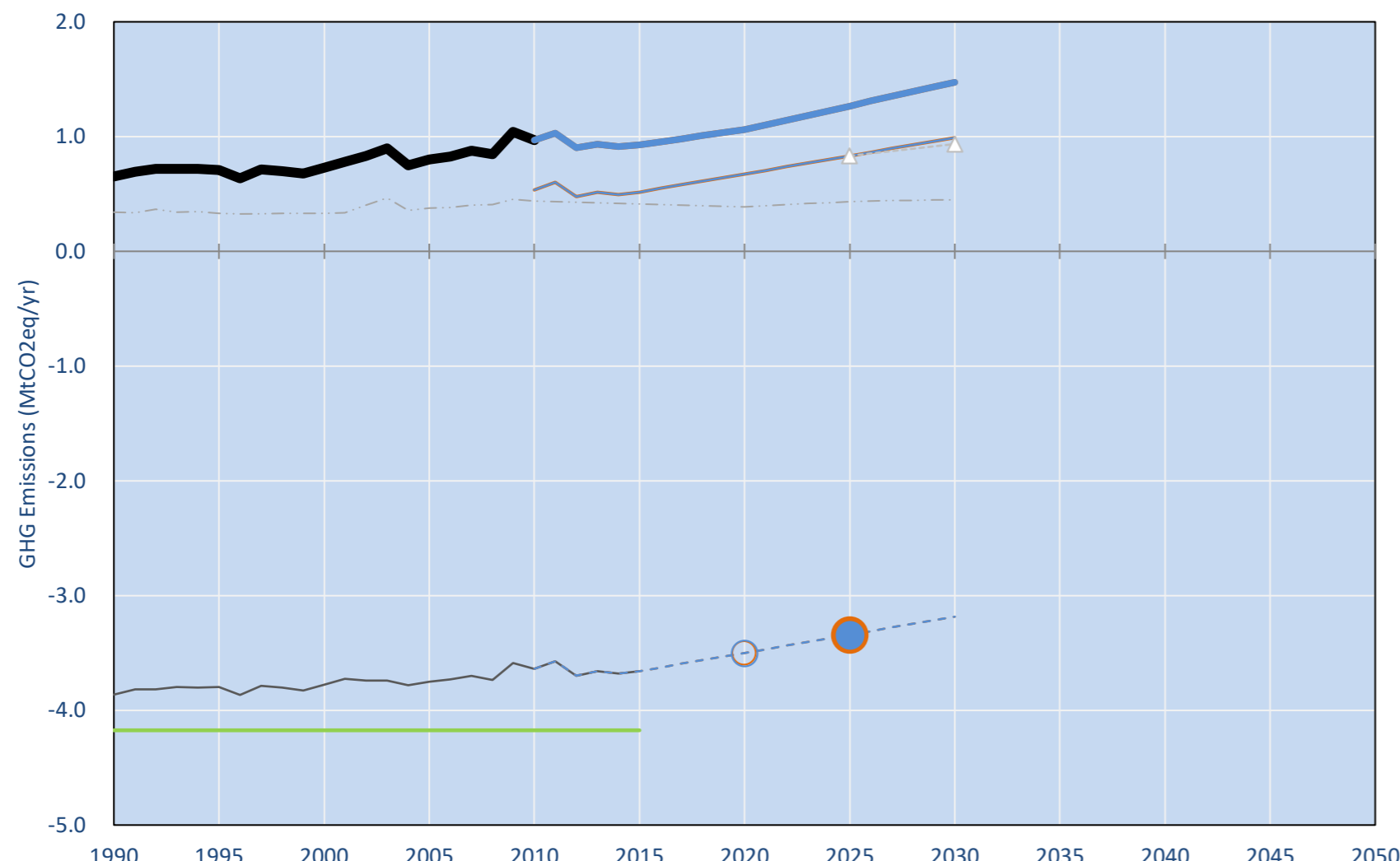
2.9t #128

3.1t #122

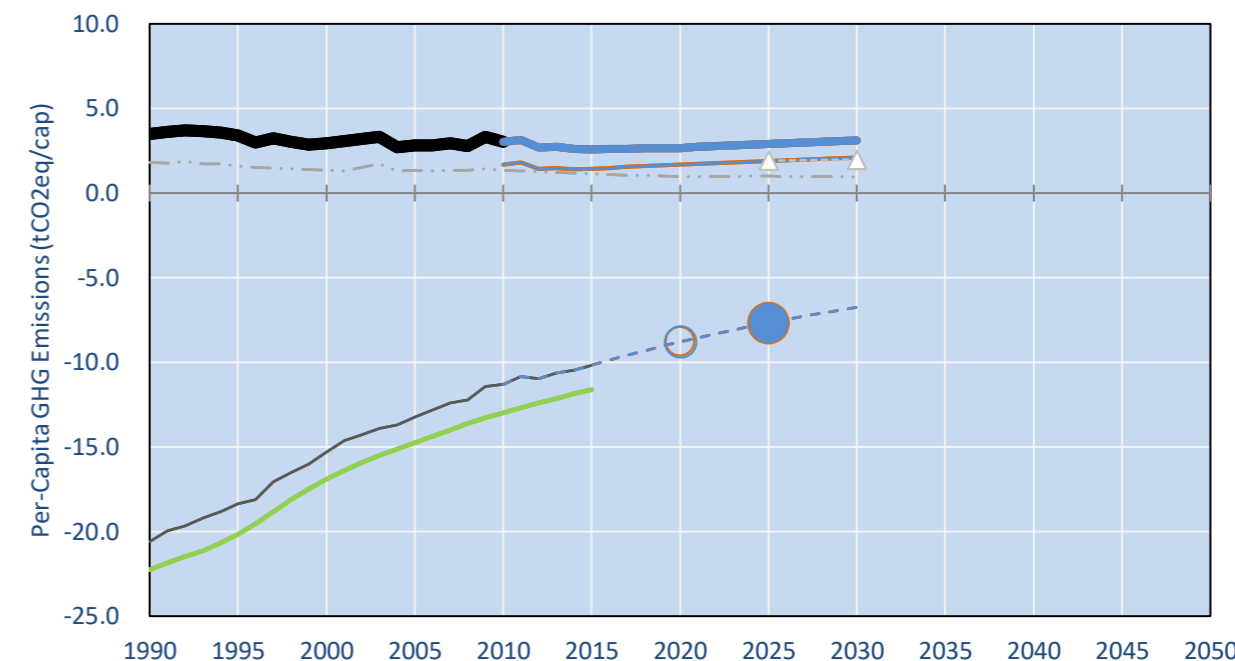
NDC: Action-based approach such national REDD+ strategy, reductions of GHG emissions in transport sector and others pending on support. (n/a (only CO2))

INDC Submitted: 1/10/2015

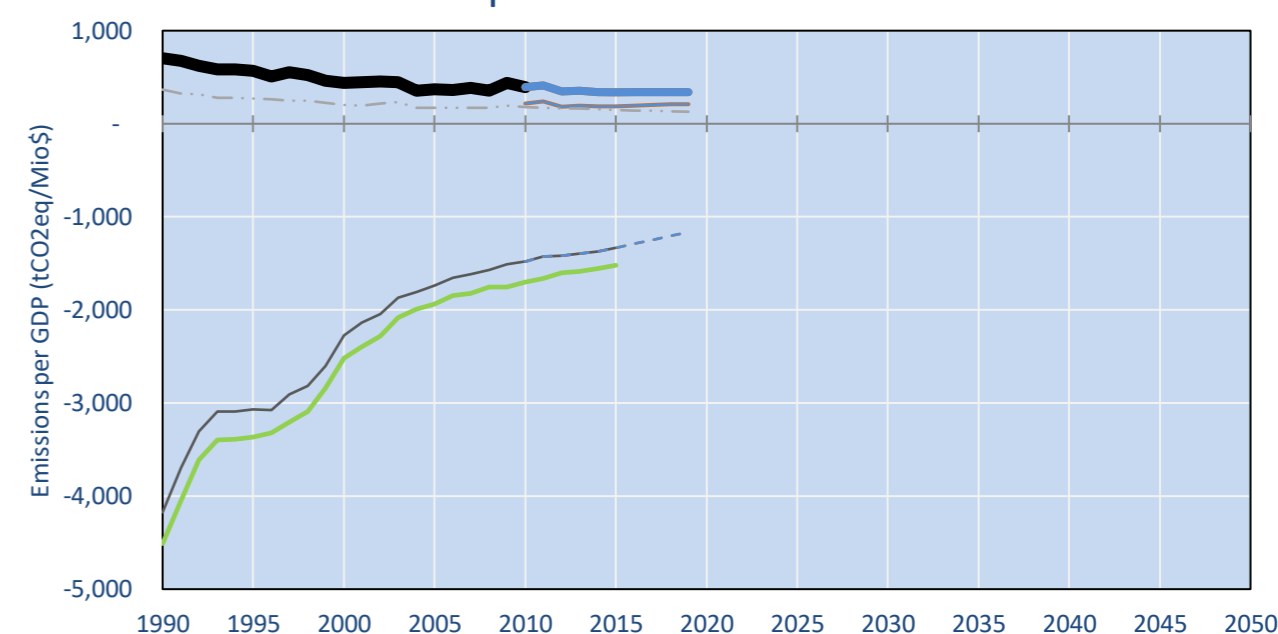
## GHG Emissions



## Per-Capita Emissions

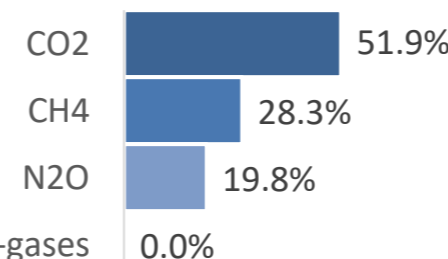


## GHG Emissions per GDP

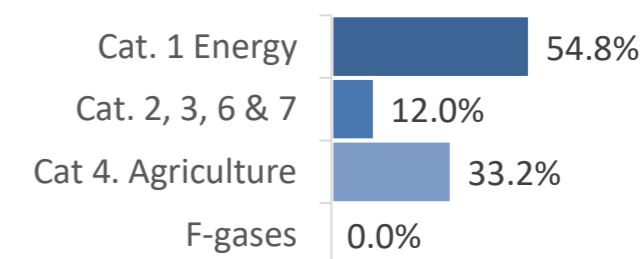


## 2015 Total GHG Emissions excl. LULUCF

By Gas:



By Sector:



## GHG Emissions

	1990	2000	2005	2010	2015	2020		2025		2030	
						low	high	low	high	low	high
Assumed LULUCF Accounting Credits (-)/Debits (+)											
NDC covered LULUCF Emissions	4	4	4	4	4	4	4	4	4	4	4
NDC covered Emissions excl. LULUCF	0	0	0	1	1	1	1	1	1	1	1
Total GHG excl. LULUCF	1	1	1	1	1	1	1	1	1	1	1
Total GHG incl. LULUCF	4	3	3	3	3	3	3	3	3	3	3

## Relative GHG Emissions

	1990	2000	2005	2010	2015	2020		2025		2030	
						low	high	low	high	low	high
Total excl. LULUCF											
Relative 1990	100%	112%	123%	149%	142%	163%	163%	195%	195%	226%	226%
Relative 2000	89%	100%	110%	133%	127%	146%	146%	174%	174%	202%	202%
Relative 2005	81%	91%	100%	121%	116%	133%	133%	158%	158%	184%	184%
Relative 2010	67%	75%	82%	100%	96%	109%	109%	130%	130%	152%	152%
Relative 2015	70%	79%	86%	105%	100%	114%	114%	137%	137%	159%	159%

## Per-Capita Emissions

	1990	2000	2005	2010	2015	2020		2025		2030	
						low	high	low	high	low	high
Total excl. LULUCF											
Population (Mio)	0	0	0	0	0	0	0	0	0	0	0
Per-Capita Emissions (tCO2eq/cap)	3.5	2.9	2.8	3.0	2.6	2.7	2.7	2.9	2.9	3.1	3.1
Relative 1990	100%	85%	81%	87%	74%	77%	77%	84%	84%	90%	90%
Relative 2000	118%	100%	96%	102%	88%	90%	90%	99%	99%	106%	106%
Relative 2005	123%	104%	100%	107%	91%	94%	94%	103%	103%	111%	111%
Relative 2010	115%	98%	93%	100%	86%	88%	88%	96%	96%	103%	103%
Relative 2015	134%	114%	109%	117%	100%	103%	103%	113%	113%	121%	121%

## Data Sources:

Cat1_CO2	PRIMAPHIST17	Cat5A1_CO2	UNFCCC CRF + Nat. Comms.
Cat2367_CO2	PRIMAPHIST17	Cat5A2_CO2	UNFCCC CRF + Nat. Comms.
Cat4_CO2	PRIMAPHIST17	Cat5LtoNonFL_CO2	UNFCCC CRF + Nat. Comms.
Cat5_CO2	PRIMAPHIST17	Cat5GMCMWMM_C	UNFCCC CRF
Cat1_CH4	PRIMAPHIST17	Cat5A1ForestFires	UNFCCC Cat5 + EDGAR(IPCC Database)
Cat2367_CH4	PRIMAPHIST16	Cat5A1HWP_CO2	UNFCCC CRF + Nat. Comms.
Cat4_CH4	PRIMAPHIST17	Cat5bisA_CO2	UNFCCC CRF + NATCOMM.
Cat5_CH4	PRIMAPHIST16	Cat5bisB_CO2	UNFCCC CRF + NATCOMM.
Cat1_N2O	PRIMAPHIST17	Cat5bisC_CO2	UNFCCC CRF + NATCOMM.
Cat2367_N2O	PRIMAPHIST17	Cat5bisD_CO2	UNFCCC CRF + NATCOMM.
Cat4_N2O	COUNTRY-SPECIFIC USER DATA	Cat5bisE_CO2	UNFCCC CRF + NATCOMM.
Cat5_N2O	PRIMAPHIST17	PRO_WM_Cat5_G	UNFCCC Annex I Reports
Cat0_HFCs	PRIMAPHIST17	Metric	GWP AR4
Cat0_PFCs	PRIMAPHIST17		
Cat0_SF6	PRIMAPHIST17		
Population	UN 2015 Population Projections MEDIUM		
GDP	IMF WEO 2015, PPP adjusted GDP, constant 2009 prices...		
	IPCC WG3 Scenario IMAGE   AMPERE2-550-FullTech-HST		
	PRIMAPHIST16 description: www.pik-potsdam.de/primap-live/primap-hist/		
	Gratefully acknowledged in particular: PRIMAP, CAIT, CDIAC, EDGAR, IPCC, IEA, UNEP Gap Team, AMPERE Team and comments on earlier versions, in particular by Giacomo Grassi. Errors and misjudgements are our own. Malte Meinshausen & Ryan Alexander; The "Fiji COP23" Edition was enabled through support via the BMUB project UM14 41 4060		
	This Factsheet is available at www.climatecollege.unimelb.edu.au/indc-factsheets. Check out as well: www.climateactiontracker.org, www.mitigation-contributions.org, cait.wri.org, infographics.pbl.nl/indc, live.primap.org, www.unep.org/climatechange/pledgepipeline, and our twitter feed @ClimateCollege		

climatecollege.unimelb.edu.au



## Various 'fair' contributions for a global 'least-cost' 2°C path (total incl. LULUCF):

2025 rel. 2010:		2030 rel. 2010:	
LEADER	#N/A	LEADER	#N/A
CDC	#N/A	CDC	#N/A
ECPC50	#N/A	ECPC50	#N/A
ECPC90	#N/A	ECPC90	#N/A
GDR	#N/A	GDR	#N/A
INDC HIGH	#N/A	INDC HIGH	#N/A
INDC LOW	#N/A	INDC LOW	#N/A

## More info on www.mitigation-contributions.org

#N/A	No results shown, as 2010 total incl. LULUCF emissions below zero
#N/A	"Fair" contributions for a global 'least-cost' 2°C track:
LEADER	Leader
CDC	Common-but-diff. per-cap. convergence
ECPC50	Eq. cum. Per-capita since 1950
ECPC90	Eq. cum. Per-capita since 1990
GDR	Greenhouse Development Rights
#N/A	No available data